

# FLORIDA'S TWO PRIMARY CRASH DATA SYSTEMS ARE NOW MERGED INTO ONE!

The best of both platforms have been maximized – the power of FDOT's **Crash Analysis Reporting (CAR)** System's database & analytics and **Signal Four (S4) Analytics'** visualization capabilities and easy to use customer interface.



**SIGNAL FOUR  
ANALYTICS**

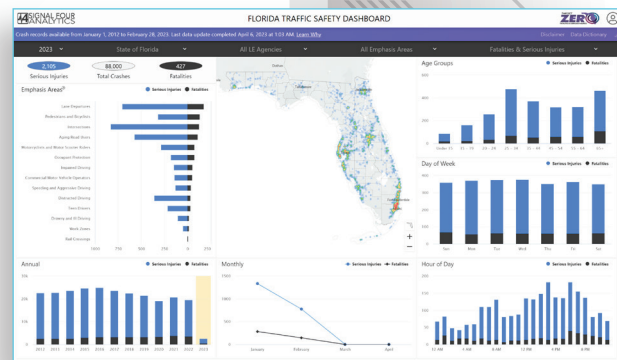
FDOT NOW HAS **ONE SOURCE** OF CRASH DATA.  
**S4 ANALYTICS** IS NOW FDOT'S OFFICIAL CRASH DATA REPOSITORY.

## KEY FEATURES:

- Easy to use **visual interface** to dynamically filter and query
- FDOT **single sign-on!**
- Includes both **state and local** roadway network
- FDOT **Roadway ID/milepost** integration
- FDOT-verified **crash locations**
- Detailed **pedestrian & bicycle** crash-typing
- Summary **charts**
- All the **Districtwide summaries** you've grown to love from CAR Online

## TRAINING AND RESOURCES:

- [Click here to view available S4 training](#)
- To support location/project level crash data use, [FDOT's Crash Data Guidance](#) was updated to give practitioners guidance on getting the latest available crash data from S4 for all FDOT safety analyses and projects
- Webinars are being developed for FDOT District staff and MPO staff — stay tuned!



## But wait, there's more!

The team continues to work on additional system capabilities, including:

- Improved integration with FDOT roadway inventory information
- Improved crash-typing for pedestrian and bicycle crashes
- Highway Safety Manual (HSM) network screening support
- Law enforcement citation mapping



[Click Here to Request Access to S4](#)