



INTERSECTION CRASH FACTS



SIGNAL FOUR (S4) ANALYTICS | 2018-2022 FATAL AND SERIOUS INJURY CRASHES | ALL PUBLIC ROADWAYS

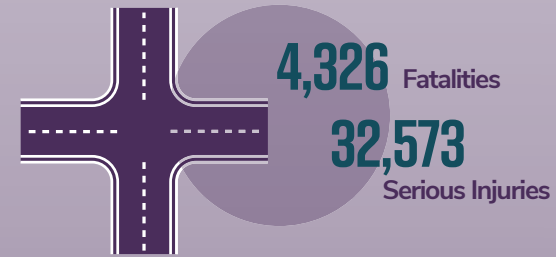
DRAFT NOVEMBER 2023

Intersection crashes are a top emphasis area of Florida's Strategic Highway Safety Plan. The Root Cause Analysis is a methodology to identify top contributing factors present in lane departure crashes to help inform strategic investments and decisions to improve our effectiveness toward Florida's target of ZERO roadway fatalities and serious injuries.

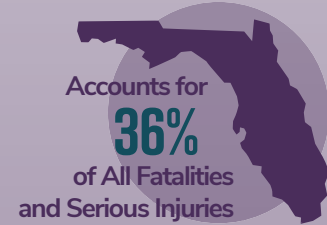
OVERVIEW

2018-2022 Crash Data

Number of People



Statewide

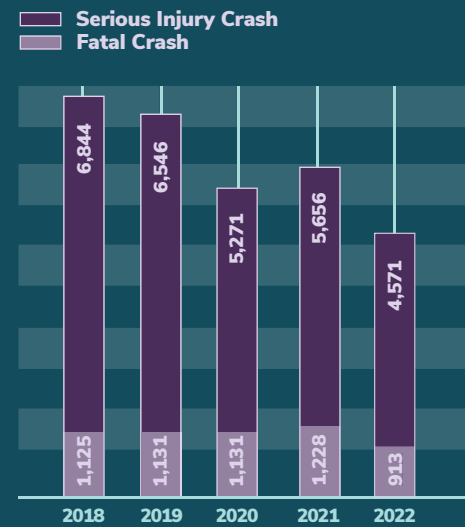


Daily Average



When Did Crashes Occur?

Fatal and Serious Injury Crashes by Year



Crashes Commonly Occur on

THU - SAT



Crashes Commonly Occur from

2 PM - 8 PM

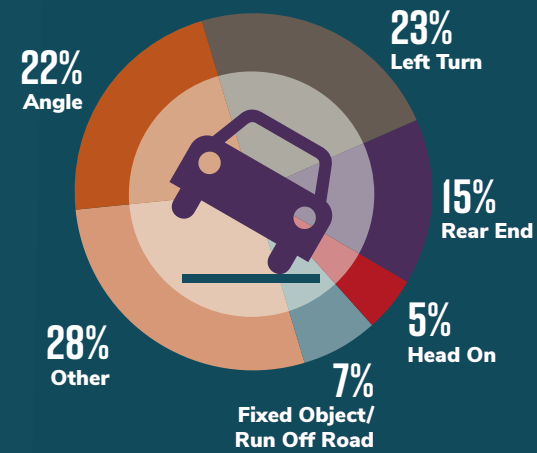


61% Day

39% Night

Vehicle Maneuver

Intersection crashes are made up of following crash types



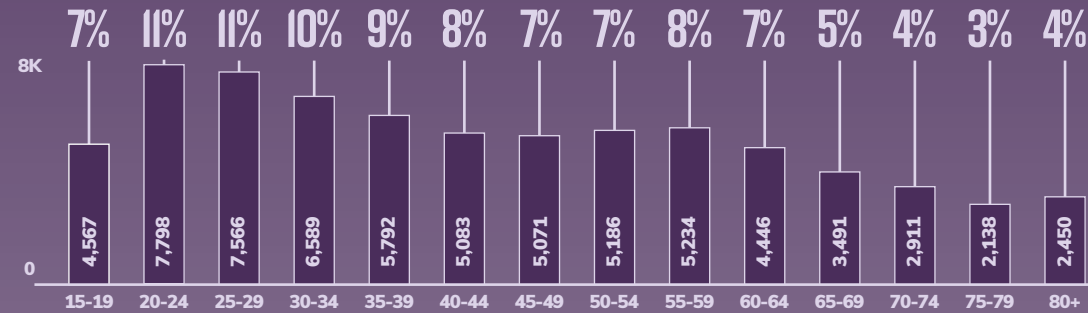
Driver

61% Male

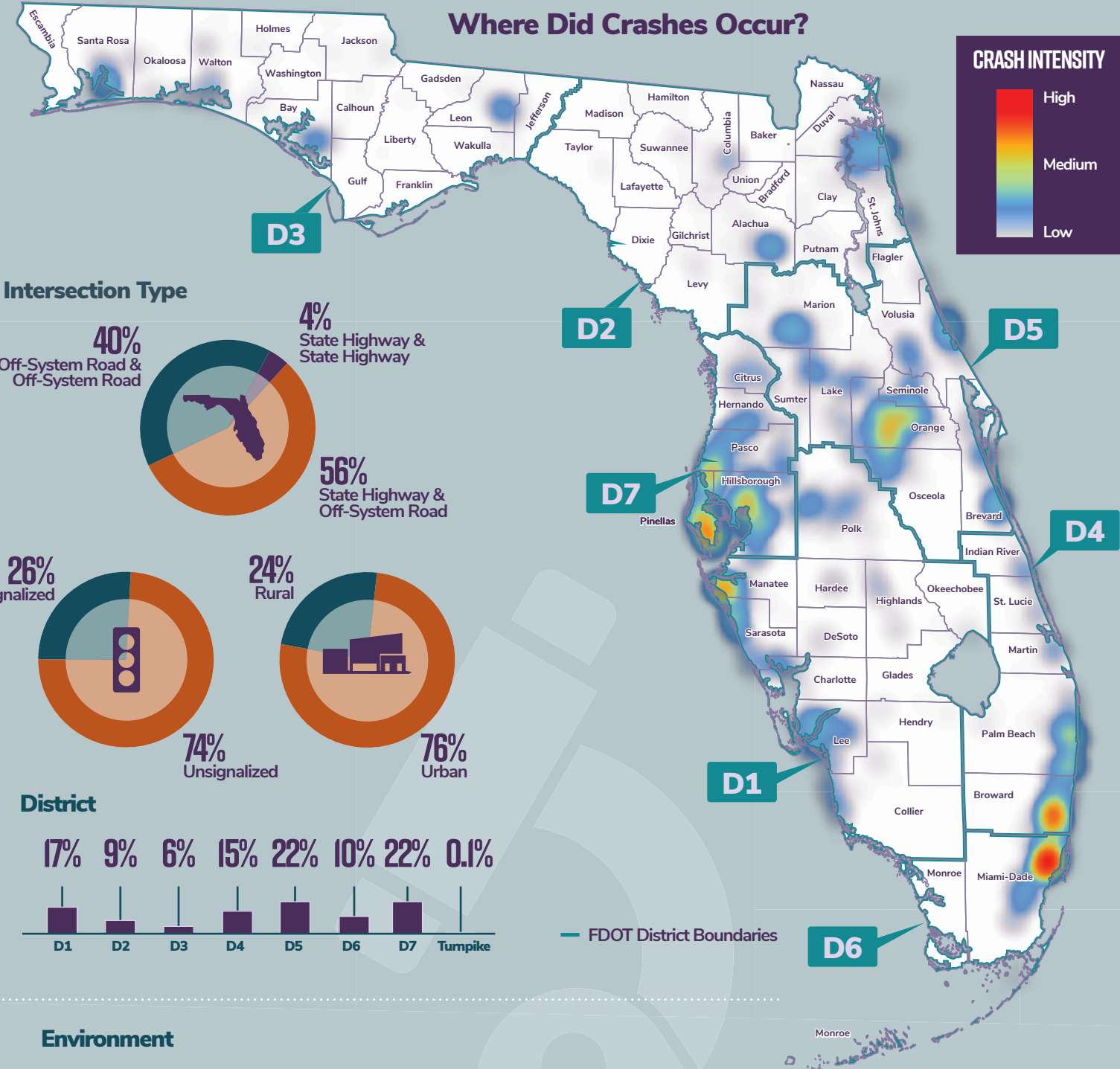
94% FL Residents



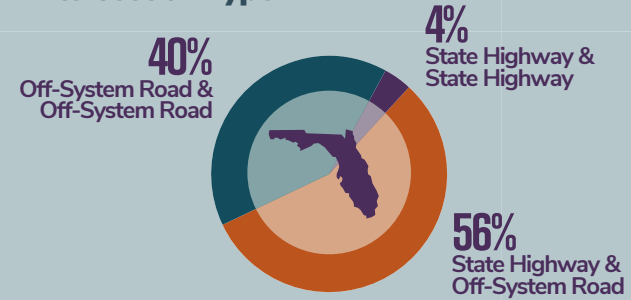
Driver Age



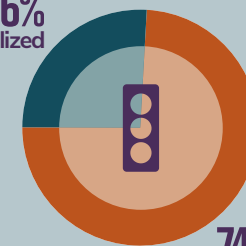
Where Did Crashes Occur?



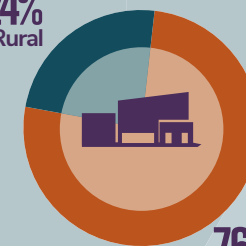
Intersection Type



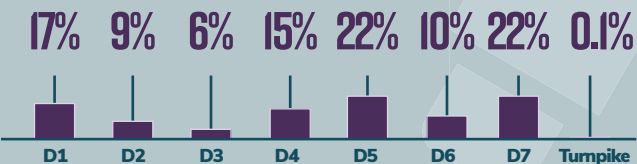
26% Signalized



24% Rural

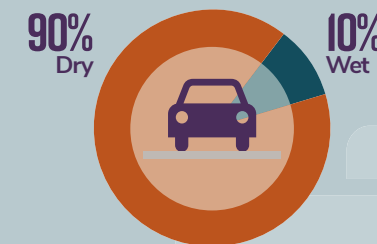


District



Environment

Road Surface Conditions



Lighting Conditions

