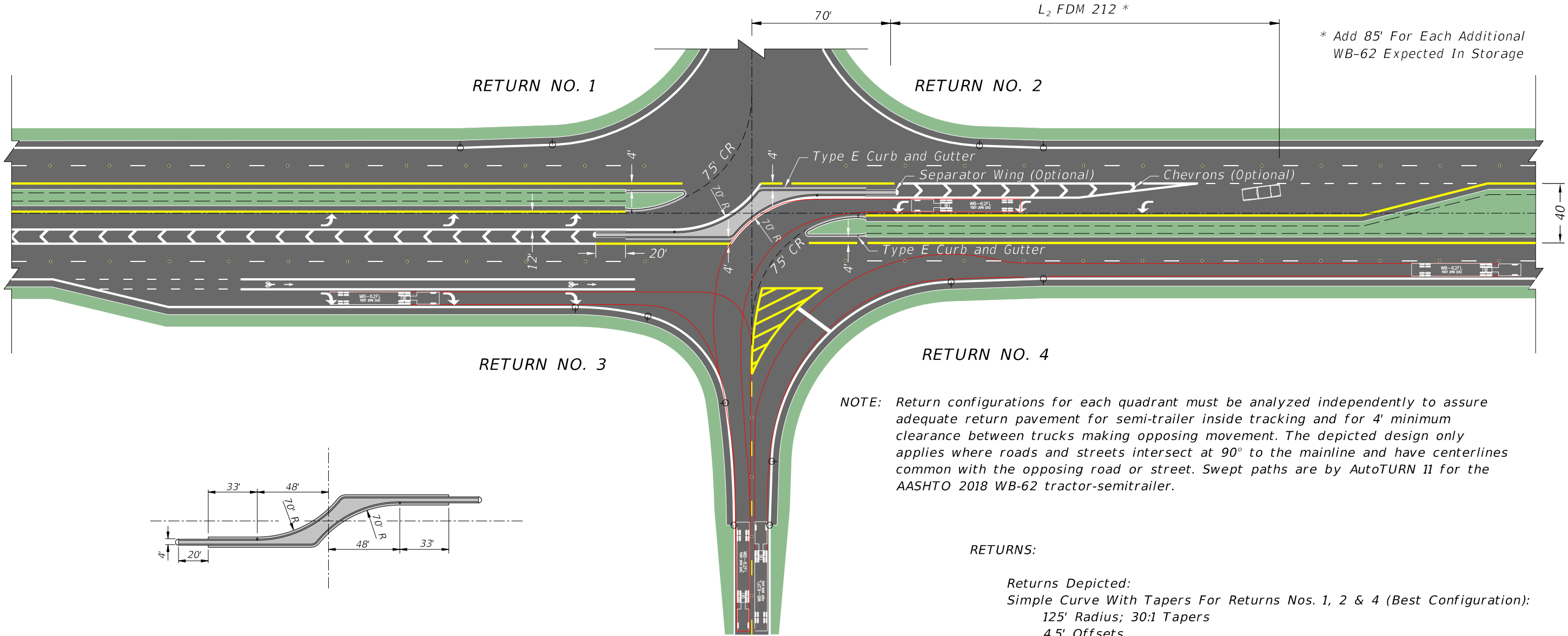


DIRECTIONAL MEDIAN OPENING: WB-62  
PARALLEL TURN BAY

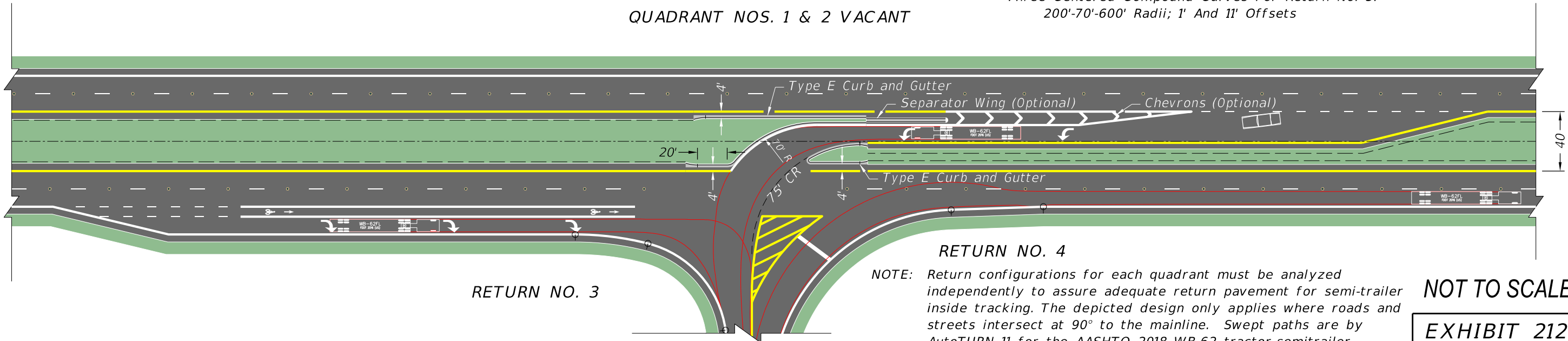


NOTE: Return configurations for each quadrant must be analyzed independently to assure adequate return pavement for semi-trailer inside tracking and for 4' minimum clearance between trucks making opposing movement. The depicted design only applies where roads and streets intersect at 90° to the mainline and have centerlines common with the opposing road or street. Swept paths are by AutoTURN 11 for the AASHTO 2018 WB-62 tractor-semitrailer.

RETURNS:

- Returns Depicted:  
Simple Curve With Tapers For Returns Nos. 1, 2 & 4 (Best Configuration):  
125' Radius; 30:1 Tapers  
4.5' Offsets  
Three Centered Compound Curves For Return No. 3:  
200'-70'-600' Radii; 1' And 11' Offsets

QUADRANT NOS. 1 & 2 VACANT



NOTE: Return configurations for each quadrant must be analyzed independently to assure adequate return pavement for semi-trailer inside tracking. The depicted design only applies where roads and streets intersect at 90° to the mainline. Swept paths are by AutoTURN 11 for the AASHTO 2018 WB-62 tractor-semitrailer.

NOT TO SCALE

EXHIBIT 212-9  
01/01/2026