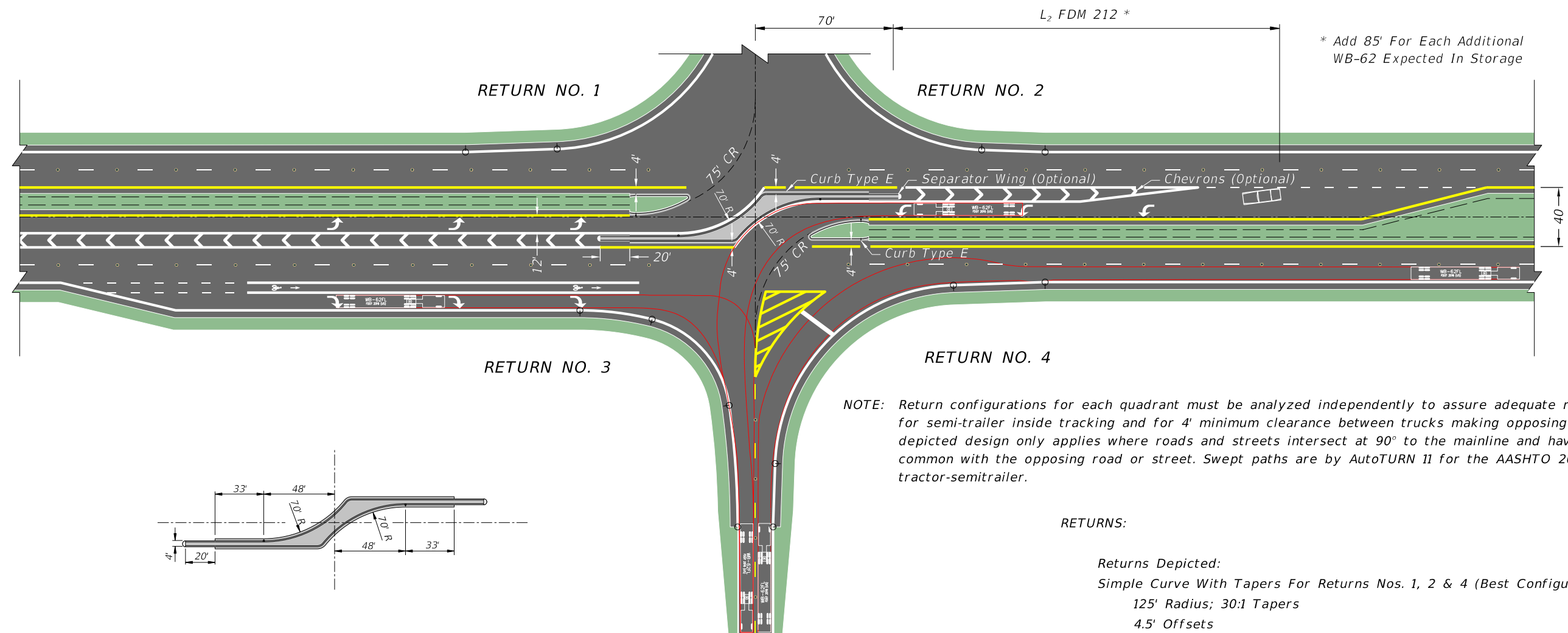


DIRECTIONAL MEDIAN OPENING: WB-62 PARALLEL TURN BAY



* Add 85' For Each Additional WB-62 Expected In Storage

NOTE: Return configurations for each quadrant must be analyzed independently to assure adequate return pavement for semi-trailer inside tracking and for 4' minimum clearance between trucks making opposing movement. The depicted design only applies where roads and streets intersect at 90° to the mainline and have centerlines common with the opposing road or street. Swept paths are by AutoTURN 11 for the AASHTO 2018 WB-62 tractor-semitrailer.

RETURNS:

Returns Depicted:

Simple Curve With Tapers For Returns Nos. 1, 2 & 4 (Best Configuration):

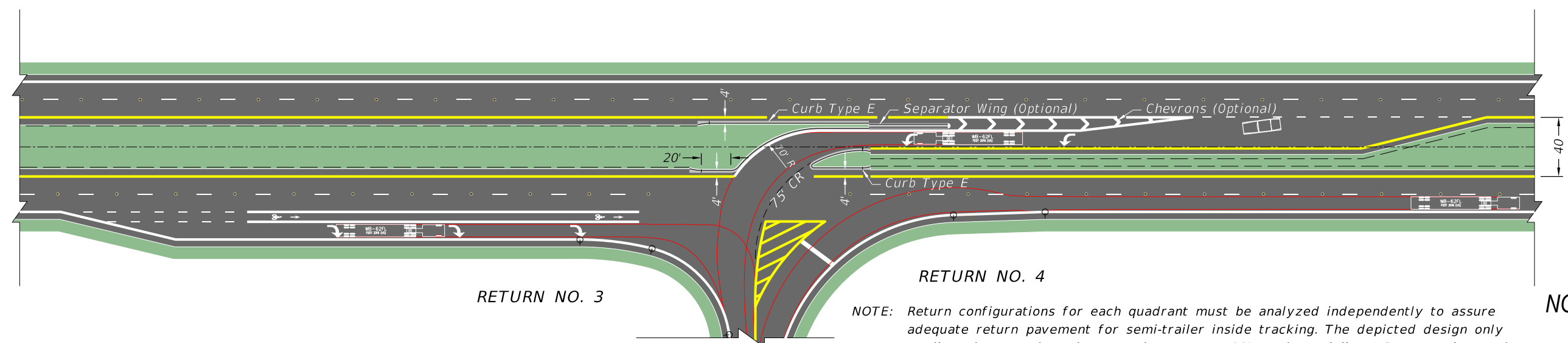
125' Radius; 30:1 Tapers

4.5' Offsets

Three Centered Compound Curves For Return No. 3:

200'-70'-600' Radii; 1' And 11' Offsets

QUADRANT NOS. 1 & 2 VACANT



NOT TO SCALE

EXHIBIT 212-9
01/01/2025