

924 Selective Clearing and Grubbing Plans

924.1 General

This chapter provides the requirements for the development of Selective Clearing and Grubbing (C&G) Plan sheets. See **FDM 274** for purpose, criteria, and requirements of Selective C&G designs.

Selective C&G Plan sheets provide the data and information for existing vegetation, trees, and palms. Select C&G Plan sheets are placed in the Roadway Plans only when:

- (1) Contract Plans do not include a Landscape Plans component, and
- (2) The district landscape architect or manager has determined that one or more of the Select C&G activities is to be included in the Roadway Plans Set.

Selective C&G activities are as follows:

- (1) Removal of undesirable trees and vegetation
- (2) Preservation and protection of desirable trees and vegetation
- (3) Branch and root pruning
- (4) Tree relocation

When tree relocations are the only Selective C&G activity, show relocation requirements on the Select C&G Plan sheets, or include Tree Relocation Plan sheets in the Roadway Plan Set (see **FDM 944**).

See **Exhibit 924-1** for an example of a Selective C&G Plan sheet. Refer to the [CADD Manual](#) for CADD standards associated with Selective C&G.

924.2 Selective C&G Plan Sheet

The Selective C&G Plan sheet provides a plan view of project indicating the location of selective clearing and grubbing activities are to be performed, and areas to be protected or preserved.

This sheet may be produced on a standard-format sheet (11"x17") or a large-format sheet (24"x36", 36"x48", or 36"x72"). Use landscape orientation regardless of sheet size selected. The standard horizontal scale is 1" = 100', however an alternate scale may be approved by the Project Manager.

Display aerial photography or available topography, including R/W, roadways and driveways, buildings, underground and overhead utilities, walls, sidewalks and curbs, pavements, fencing, railroads, bridges, drainage structures and similar items that are relevant to the proposed Selective C&G activities. Display proposed roadway improvements when landscape project follows or is part of a roadway project.

Display a north arrow and scale within each plan view, typically in the upper right portion. Display existing or proposed roadway and centerline of construction or baseline of construction such that the stationing is increasing from left to right.

Display and label the following:

- (1) Existing tree canopy for individual tree or tree group
- (2) Trees to be relocated or removed
- (3) Tree protection fencing
- (4) Preservation areas
- (5) Removal of undesirable vegetation
- (6) Branch and root pruning

Include a legend on each sheet depicting the type of selecting clearing and grubbing activities to be performed. Provide a designation (ID) number for each tree and palm, and for each area where removal of undesirable vegetation will occur. Each tree does not need a designation number when a group of trees are to be branch pruned, but the quantity of trees to be pruned must be provided.

When a tree protection area is adjacent to a barrier (e.g., fencing, wall, guardrail, sediment barrier) the tree protection fencing that is parallel to the barrier may be omitted.

924.3 Selective C&G Detail Sheet

The notes required for selective C&G vary depending on the project. It may be desirable to provide a separate Selective C&G Detail sheet to display the notes, symbols, and details that are applicable to the project. Place Vegetation Removal Table, Root and Branch Pruning Table, and Tree Disposition Table on Selective C&G Detail sheets.

See **Exhibit 924-2** for an example of a Selective C&G Detail Sheet.

924.3.1 Vegetation Removal Table

Provide a Vegetation Removal Table when the project includes removal of undesirable vegetation. The table includes:

- (1) Area ID number for removal area. Numbers can be based on roadway stationing numbers, quadrants, or sheet numbers.
- (2) Clear and precise description of the work to be performed.
- (3) Estimated percent of target species to be removed or eradicated from the area.
- (4) List of primary species targeted for removal or eradication. Use species symbol.
- (5) List of primary species to remain or preserve. Use species symbol.
- (6) Additional information or notes concerning removal area, such as:
 - (a) Florida Exotic Pest Plant Council Category I species to be removed
 - (b) Estimated percent of Category I vegetative cover for each area
 - (c) Additional species to target for removal or preservation

Include a species legend indicating plant species Botanical Name (common name) and symbol. Plant species symbols are typically abbreviated by the first letter of the genus and the first letter of the botanical name; e.g., Live Oak, *Quercus virginiana* is QV. Include project specific notes on the Selective C&G Detail sheet.

924.3.2 Root and Branch Pruning Table

Provide a Root and Branch Pruning Table when the project includes root or branch pruning of existing trees. The table should include the following:

- (1) Tree ID number and location (e.g., station/offset, coordinates). Payment for pruning activity is per tree which requires that each tree be listed in the table.
- (2) Botanical and common name of tree
- (3) Clear and precise description of the work to be performed, including:
 - (a) Root Pruning objects (e.g., preparation for relocation, required for construction of project)
 - (b) Branch Pruning objectives (e.g., structural, aesthetics, safety, clearance)

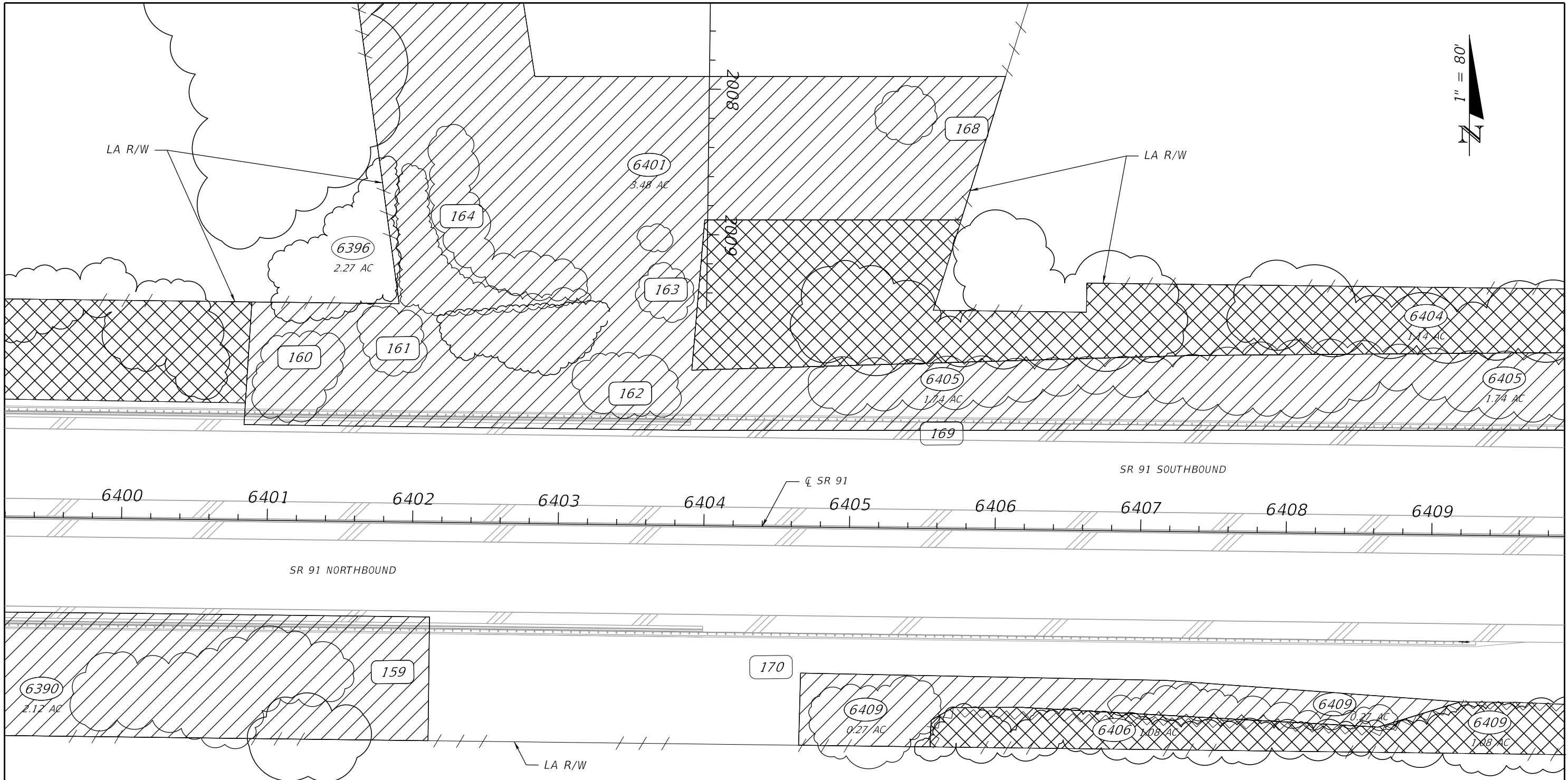
924.3.3 Tree Disposition Table

Provide a Tree Disposition Table when existing trees and palms to be protected, relocated, or removed. Include the following in the table:

- (1) Tree ID number
- (2) Existing and proposed location of tree (e.g., station/offset, coordinates, site numbers).
- (3) Botanical and common name of tree
- (4) Diameter of tree trunk at breast height (DBH), and estimated tree height and canopy spread.
- (5) Disposition of tree (e.g., "To Remain", "To Be Protected", "To Be Removed", "To Be Relocated.")
- (6) Condition of the tree utilizing the International Society of Arboriculture (ISA) tree rating system (Excellent, Good, Fair, Poor, Dead). Also note issues with structure or damage.

Site-specific requirements may be included under the "Notes" column. Site-specific requirements may include:

- (1) Watering schedule
- (2) Fertilizer mix
- (3) Fertilizer schedule
- (4) Backfill or soil amendments.
- (5) Root or Branch pruning and intent (structural, aesthetic, safety, etc.)



LEGEND:

	TREE PROTECTION BARRIER		EXISTING TREE TO REMAIN		PLANT PRESERVATION AREAS
	ROOT PRUNING LINE		EXISTING TREE TO BE REMOVED		
	CANOPY OF EXISTING TREE (LINE DENOTES DRIPLINE OF TREE)		SELECTIVE CLEARING AND GRUBBING		

Exhibit 924-1
 Selective C&G Plan
 Date: 1/1/2023

REVISIONS				ARCHITECT OF RECORD		STATE OF FLORIDA DEPARTMENT OF TRANSPORTATION			SELECTIVE CLEARING & GRUBBING PLAN (1)	SHEET NO. 1371
DATE	DESCRIPTION	DATE	DESCRIPTION	ARTURITO T. GOMEZ, L.A. LICENSE NUMBER: 99999 LAND DESIGN, LLC. 345 IVY LANE ORLANDO, FL 32801		ROAD NO.	COUNTY	FINANCIAL PROJECT ID		
						SR 91	ORANGE	123456-1-52-01		

10/26/2022 5:15:24 PM PS972BW
 C:\worksets\FDOT\12345615201\Landscapes\SCGPLD01.dgn

THE OFFICIAL RECORD OF THIS SHEET IS THE ELECTRONIC FILE DIGITALLY SIGNED AND SEALED UNDER RULE 61G15-23.004, F.A.C.

VEGETATION REMOVAL TABLE

AREA ID	WORK DESCRIPTION	EST. % OF PRIMARY SPECIES TO TARGET	PRIMARY SPECIES TO TARGET	SPECIES TO PRESERVE	NOTES
424	DESIGNATES AREAS WHERE CATEGORY #1 INVASIVE, EXOTIC VEGETATION AND NATIVE UNDERSTORY WILL BE SELECTIVELY REMOVED. LARGE DESIREABLE TREES TO REMAIN. ALL TREES UNDER 4" DBH TO BE REMOVED.	75%	AA, ST	PE, SP	REMOVE LARGE TREE DEBRIS OR GRIND ON SITE AND SPREAD AS DIRECTED BY DISTRICT LANDSCAPE ARCHITECT
426	DESIGNATES AREAS WHERE ALL NATIVE VEGETATION WILL BE MOWED FLUSH WITH THE GROUND AND ALL CATEGORY #1 INVASIVE, EXOTIC VEGETATION WILL BE TREATED WITH HERBICIDES.	100%	AA, ST, TS	NONE	INCLUDES REMOVAL OF WILLOWS AND WAX MYRTLE.

WORK TABLE NOTES

- "PRIMARY" SPECIES TO TARGET (REMOVE) OR PRESERVE ARE THOSE THAT WERE DETERMINED TO BE MOST PREVALENT IN THAT AREA, AND ARE NOT INTENDED TO BE THE ONLY SPECIES THAT OCCUR. THE FOLLOWING ADDITIONAL UNDESIREABLE NATIVE SPECIES WILL BE TARGETED FOR REMOVAL IN ALL AREAS LISTED IN THE WORK TABLE:
BOTANICAL NAME (COMMON NAME)
 MYRICA CERIFERA (SOUTHERN WAX MYRTLE)
 TYPHA SPP. (CATTAILS)
- THE FOLLOWING CATEGORY #1 INVASIVE SPECIES WILL NOT BE TARGETED FOR REMOVAL:
BOTANICAL NAME (COMMON NAME)
 SOLANUM TAMPICENSE (WETLAND NIGHTSHADE)
 PANICUM REPENS (TORPEDO GRASS)

SPECIES LEGEND

(SYM)	BOTANICAL NAME (COMMON NAME)
(AA)	ACACIA AURICULIFORMIS (EARLEAF ACACIA)
(ST)	SCHINUS TEREBINTHIFOLIUS (BRAZILIAN PEPPER)
(TS)	TYPHA SPP. (CATTAILS)
(PE)	PINUS ELLIOTTII (SLASH PINE)
(SP)	SABAL PALMETTO (SABAL PALM)

ROOT AND BRANCH PRUNING TABLE

TREE ID	LOCATION (Station/Offset or Coordinates)	BOTANICAL NAME	COMMON NAME	WORK DESCRIPTION	NOTES
1125	428+40 150' LT	QUERCUS VIRGINIANA	LIVE OAK	TRIM CO-DOMINANT LEADER	INCLUDES REMOVAL OF DEBRIS
1126	430+50 120' LT	QUERCUS VIRGINIANA	LIVE OAK	PRUNE TO IMPROVE STRUCTURAL INTEGRITY OF TREE	INCLUDES REMOVAL OF DEBRIS

TREE DISPOSITION TABLE

SHEET NUMBER	TREE NO.	SYMBOL	BOTANICAL NAME	COMMON NAME	DBH (IN.) FOR TREES/ CTH (FT.) FOR PALMS	HEIGHT (FT.) (APPROX.)	CANOPY SPREAD (FT.) (APPROX.)	LOCATION		CONDITION	DISPOSITION	NOTES
								STATION	OFFSET/SIDE			
TD-1	1121	QV	QUERCUS VIRGINIANA	LIVE OAK	4	16	7	424+20	130' LT	AVERAGE	RELOCATE TO STA. 429+30, 145' LT	NURSEY MATERIAL PLANTED IN 2017 AS PART OF A LANDSCAPE PROJECT
TD-1	1122	RR	ROYSTONIA REGIA	ROYAL PALM	19	19 GW		423+60	210' RT	AVERAGE	RELOCATE TO STA. 430+90, 130' LT	
TD-1	1123	PC	PINUS CLAUSA	SAND PINE				430+70 - 434+95	RT	AVERAGE	REMAIN	GROUP OF PINES
TD-1	1124	QV	QUERCUS VIRGINIANA	LIVE OAK	6	20	25	437+95	300' RT	POOR	REMOVE	SEE SELECTIVE CLEARING AND GRUBBING SHEET

Exhibit 924-2
Selective C&G Detail
Date: 1/1/2023

9/29/2022 11:05:54 AM P5972BW C:\work\sets\FDOT\12345615201\landscape\SCGTL001.dgn

THE OFFICIAL RECORD OF THIS SHEET IS THE ELECTRONIC FILE DIGITALLY SIGNED AND SEALED UNDER RULE 61G10-11.011, F.A.C.

REVISIONS				LANDSCAPE ARCHITECT	STATE OF FLORIDA DEPARTMENT OF TRANSPORTATION			SHEET NO.
DATE	DESCRIPTION	DATE	DESCRIPTION		ROAD NO.	COUNTY	FINANCIAL PROJECT ID	
				ARTURITO T. GOMEZ, L.A. LICENSE NUMBER: 99999 LAND DESIGN, LLC. 345 IVY LANE ORLANDO, FL 32801	SR 22	BAY	123456-1-52-01	SELECTIVE CLEARING AND GRUBBING DETAIL SHEET