

309 Project Layout

309.1 General

The project layout sheet is an optional sheet that the district may choose to include in the plans set. This sheet shows the horizontal alignment and plan or plan-profile sheet sequence and numbering for the project. The project layout sheet provides clarity and detailed information on complex projects involving interchanges with many connecting routes. If included in the plans set, this sheet should also show all survey reference points.

Modification for Non-Conventional Projects:

Delete the above paragraph and replace with the following:

The project layout sheet shows the horizontal alignment and plan or plan-profile sheet sequence and numbering for the project.

See **Exhibit 309-1** for an illustration of the Project Layout sheet.

Use the standard plan format sheet provided in the FDOT CADD Software to prepare the project layout sheet. Use a scale that provides clarity and legibility. Place a north arrow and scale in a conspicuous location, typically in the upper right portion of the sheet. For large or complicated projects, more than one sheet may be required to clearly depict all required information. Use match lines when multiple project layout sheets are needed.

309.2 Alignment Sheet Sequence

Show complete project alignment with baseline of survey and/or centerline of construction. Show edge of pavements if scale permits. Superimpose on the alignment the outlines of the plan, or plan-profile sheets to depict the sheet sequence with relation to the alignment stationing. Include the appropriate plan sheet number on each sheet outline. Plan or plan-profile sheet numbering must be in the following order:

- (1) Mainline (for widely separated roadways, the right roadway in the direction of stationing takes precedence)
- (2) Crossroads
- (3) Ramps
- (4) Frontage roads

(5) Access roads

Flag and label beginning and ending stations for project, construction and ramps, including equations and/or exceptions.

Modification for Non-Conventional Projects:

Delete **FDM 309.2** above and replace with:

309.2 Alignment Sheet Sequence

Show complete project alignment with baseline of survey and/or centerline of construction. Flag and label beginning and ending stations for project, construction and ramps, including equations.



CURVE DATA CLCONST2
 PI STA. = 128+57.10
 DELTA = 5° 55' 58" (LT.)
 D = 0° 45' 00"
 T = 395.87
 L = 791.02
 R = 7,639.44
 PRC STA. = 124+61.24
 PT STA. = 132+52.26

STA. 131+77.73 Q CONST. =
 STA. 50+30.36 Q N LAUREN PL.

EQUATION
 PT STA. 132+52.26 Q CONST. BK.=
 STA. 32+50.03 B SURVEY AHD.=
 STA. 132+50.03 Q CONST. AHD.

STA. 133+60.02 Q CONST.
 GULF RAILWAY
 CROSSING NO. 620179

STA. 33+60.30 B SURVEY
 GULF RAILWAY
 CROSSING NO. 620179

STA. 135+11.97 Q CONST.=
 STA. 30+30.00
 Q S GABRIEL CT.

STA. 137+59.82 Q CONST.=
 STA. 30+03.39 Q JULIA AVE.
 RELOCATION

END PROJECT 123456-1-52-01
 STA. 154+85.00
 BEGIN PROJECT 123457-1-52-01

STA. 153+89.25 Q CONST. =
 STA. 30+30.00 Q N LILA AVE.

STA. 144+93.41 Q CONST. =
 STA. 30+30.00 Q N RAEA AVE.

BEGIN PROJECT 123456-1-52-01
 STA. 120+26.44
 END PROJECT 123455-1-52-01

STA. 131+77.36 Q CONST.
 STA. 50+30.36 Q S LAUREN PL.

STA. 125+63.48 Q CONST.=
 STA. 30+61.04 Q DIANE ST.

STA. 119+99.23 Q CONST. =
 STA. 451+67.01 Q SR 22

N 89° 38' 15" E
 PC
 Q CONST.
 B SURVEY

STA. 25+62.77 B SURVEY. =
 STA. 30+00.00 Q DIANE ST.

STA. 20+00.05 B SURVEY =
 STA. 450+75.98 Q SR 22

CURVE DATA CLCONST
 PI STA. = 122+51.62
 DELTA = 6° 17' 42" (RT.)
 D = 1° 30' 00"
 T = 210.04
 L = 419.65
 R = 3,819.50
 PC STA. = 120+41.58
 PT STA. = 124+61.23

STA. 31+75.39 B SURVEY
 STA. 50+00.00
 Q S LAUREN PL.

STA. 31+75.74
 B SURVEY=
 STA. 50+00.00
 Q N LAUREN PL.

STA. 35+12.30 B SURVEY=
 STA. 30+00.00
 Q S GABRIEL CT.

STA. 36+29.44 B SURVEY =
 STA. 20+00.00 B SURVEY
 LATERAL DITCH

STA. 144+47.77 Q CONST. =
 STA. 30+30.01 Q S RAEA AVE.

STA. 37+66.86 Q CONST. =
 STA. 29+72.69 Q JULIA AVE.

STA. 44+93.82 B SURVEY =
 STA. 30+00.00 Q N RAEA AVE.

STA. 44+46.95 B SURVEY =
 STA. 30+00.00 Q S RAEA AVE.

STA. 53+89.36 B SURVEY =
 STA. 30+00.00 Q N LILA AVE.

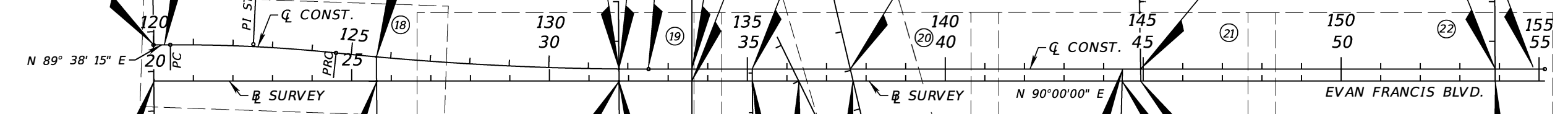


Exhibit 309-1
 Date: 1/1/17

REVISIONS				LUKE S. WALKER, P.E. P.E. NO.: 99991 ROADWAY ENGINEERS, INC. 123 MAIN STREET TALLAHASSEE, FL 32301	STATE OF FLORIDA DEPARTMENT OF TRANSPORTATION			PROJECT LAYOUT	SHEET NO.
DATE	DESCRIPTION	DATE	DESCRIPTION		ROAD NO.	COUNTY	FINANCIAL PROJECT ID		
					SR 22	BAY	123456-1-52-01		

THE OFFICIAL RECORD OF THIS SHEET IS THE ELECTRONIC FILE DIGITALLY SIGNED AND SEALED UNDER RULE 61G15-23.004, F.A.C.