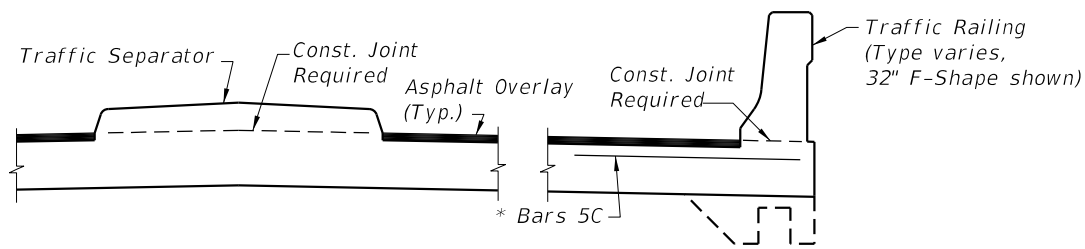
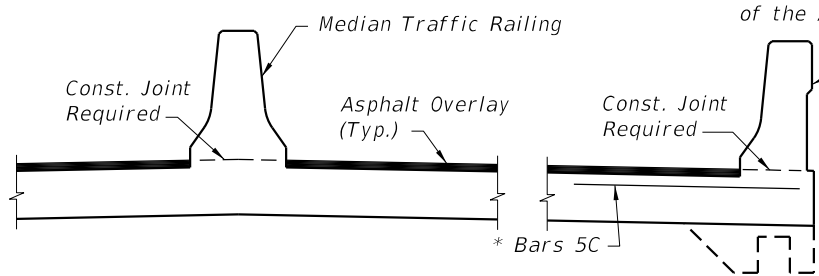


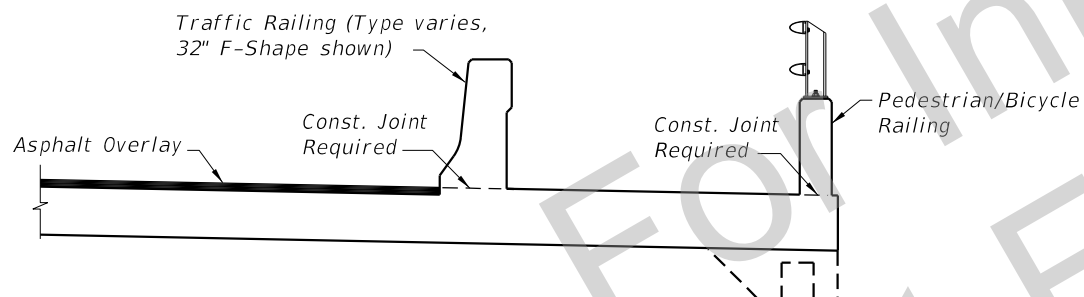
**SECTION B-B
STANDARD APPROACH SLAB**



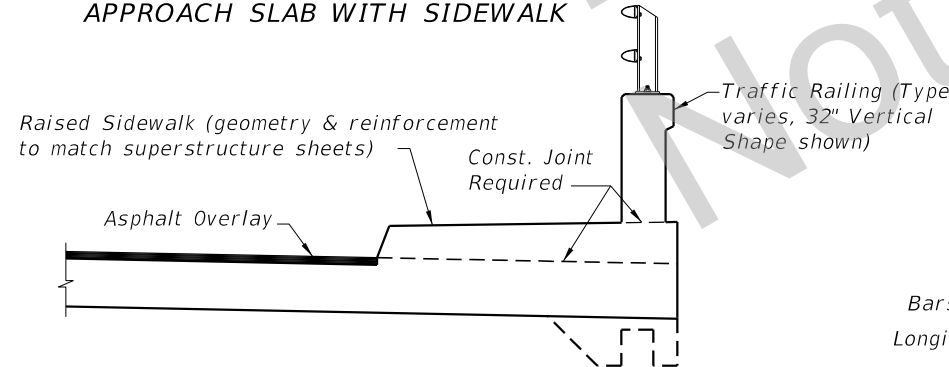
**SECTION B-B
APPROACH SLAB WITH TRAFFIC SEPARATOR**



**SECTION B-B
APPROACH SLAB WITH MEDIAN TRAFFIC RAILING**



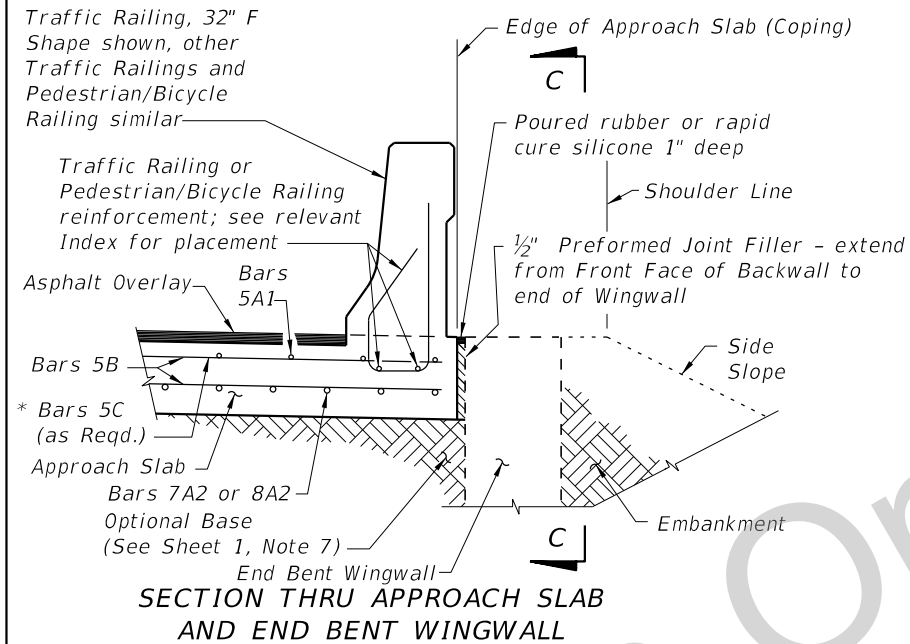
**SECTION B-B
APPROACH SLAB WITH SIDEWALK**



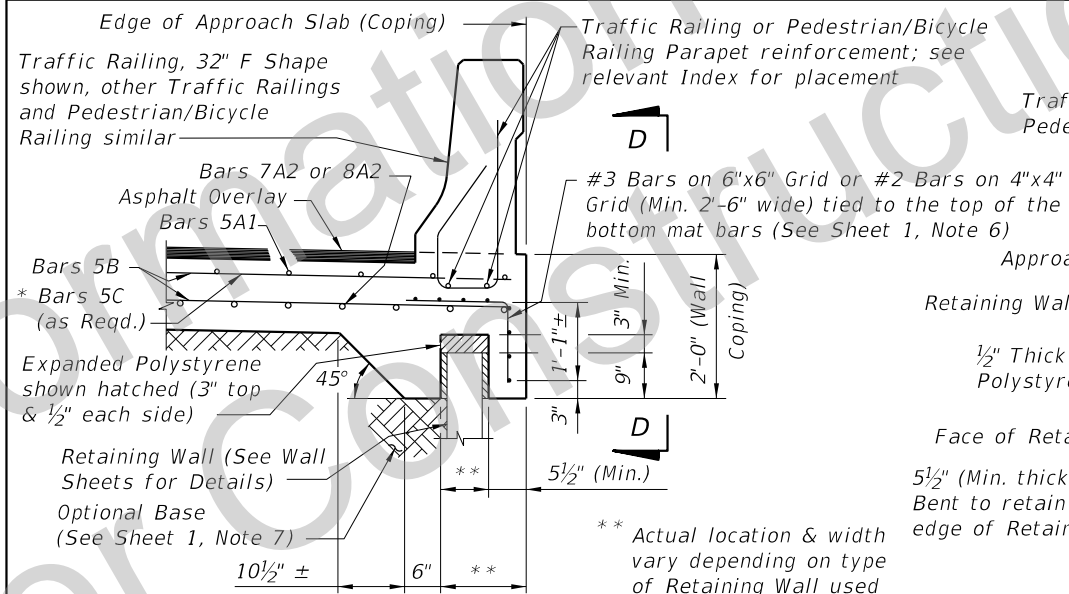
**SECTION B-B
APPROACH SLAB WITH RAISED SIDEWALK**

NOTE:
Geometry of Traffic Railings,
Pedestrian/Bicycle Railings, Traffic
Separators and Sidewalks to match
those on adjoining bridge.

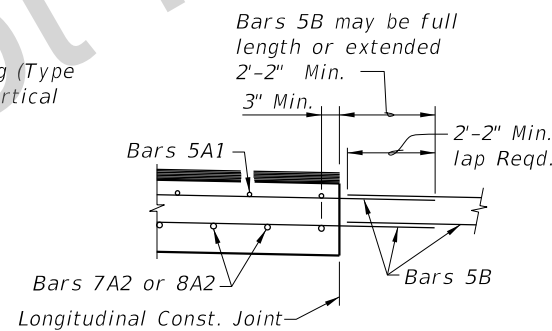
*** NOTE:** Bars 5C are required as
shown when either the 32" or
42" F-Shape Traffic Railing or the
Traffic Railing/Noise
Wall are used at the edge of
the Approach Slab.



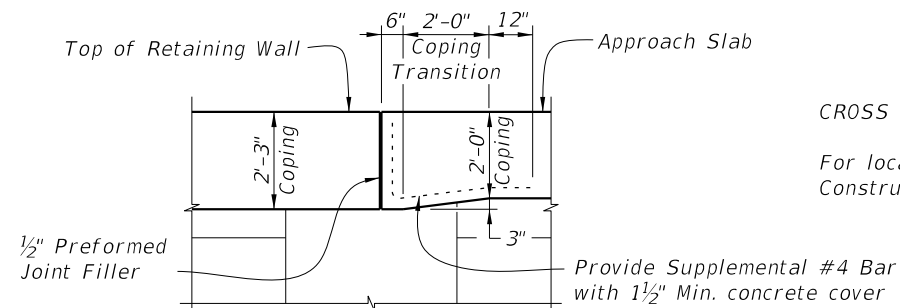
**SECTION THRU APPROACH SLAB
AND END BENT WINGWALL**



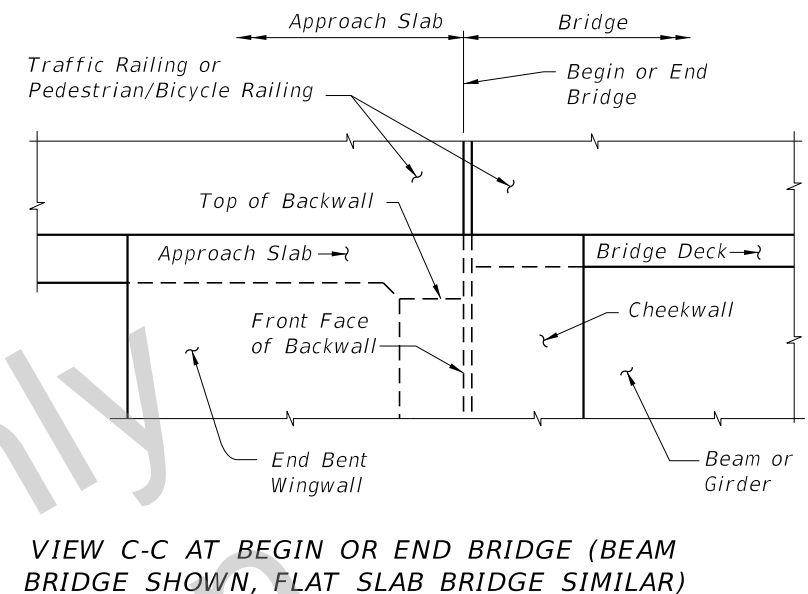
**SECTION THRU APPROACH SLAB
AND RETAINING WALL**



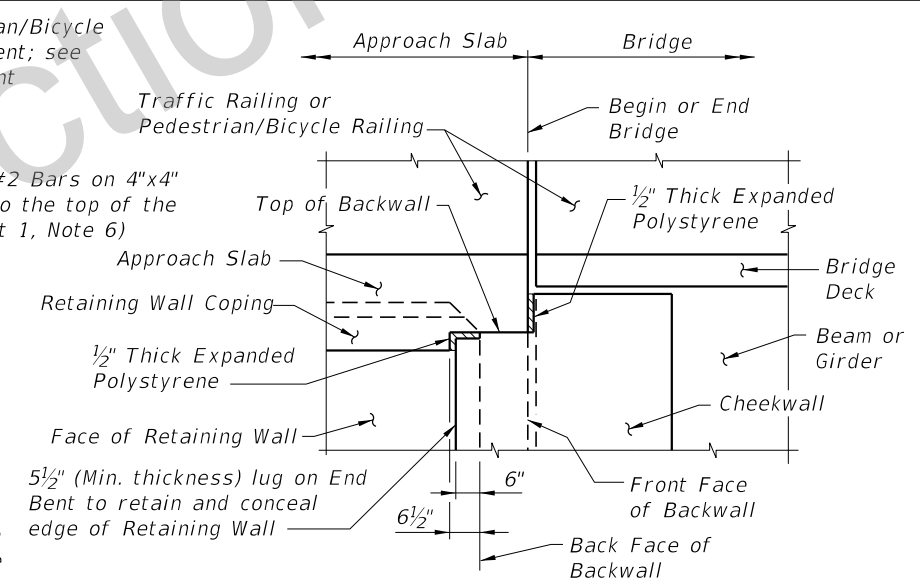
**LONGITUDINAL CONSTRUCTION
JOINT DETAIL**



**COPING TRANSITION DETAIL FOR
RETAINING WALLS WITH 2'-3" COPING HEIGHT
(Railing Not Shown For Clarity)**



**VIEW C-C AT BEGIN OR END BRIDGE (BEAM
BRIDGE SHOWN, FLAT SLAB BRIDGE SIMILAR)**



**VIEW D-D AT BEGIN OR END BRIDGE (BEAM
BRIDGE SHOWN, FLAT SLAB BRIDGE SIMILAR)**

CROSS REFERENCES:
For location of Section B-B and Longitudinal
Construction Joint see Sheet 1.

SDATES

LAST REVISION 06/01/16	DESCRIPTION:
---------------------------	--------------



**APPROACH SLABS - GFRP REINFORCED
(FLEXIBLE PAVEMENT APPROACHES)**

INDEX NO. D22900	SHEET NO. 2 of 2
---------------------	---------------------