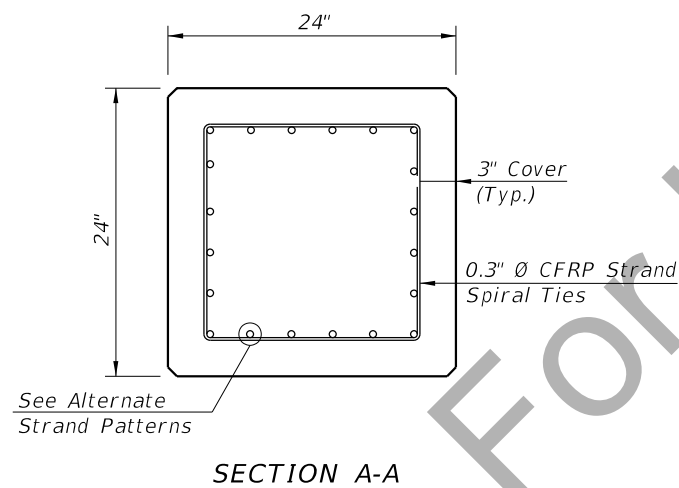


SPIRAL TIE ELEVATION

ALTERNATE STRAND PATTERNS

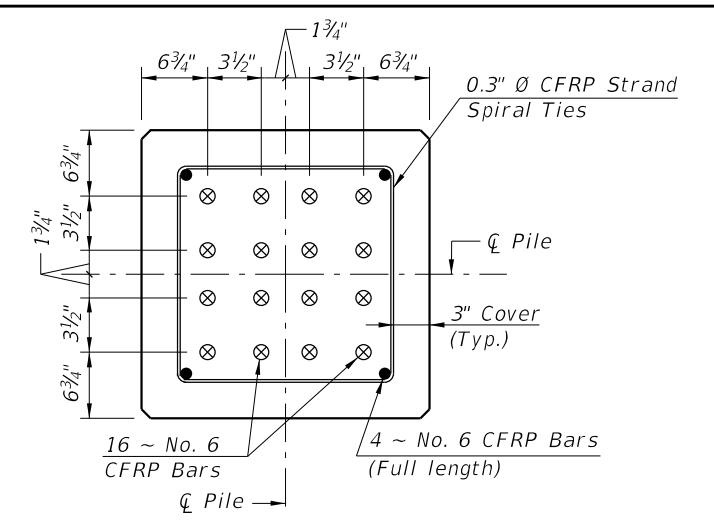
- 20 ~ 0.6" Ø, CFRP Strand, at 40 kips
- 20 ~ 1/2" Ø, CFRP Strand, at 39 kips



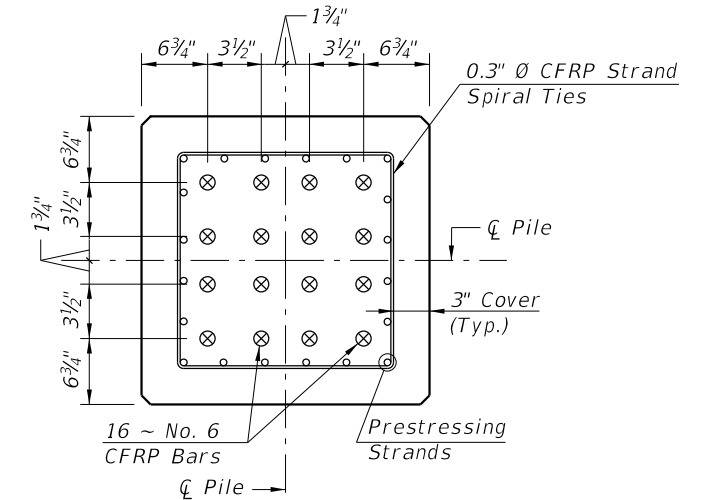
SECTION A-A

NOTES:

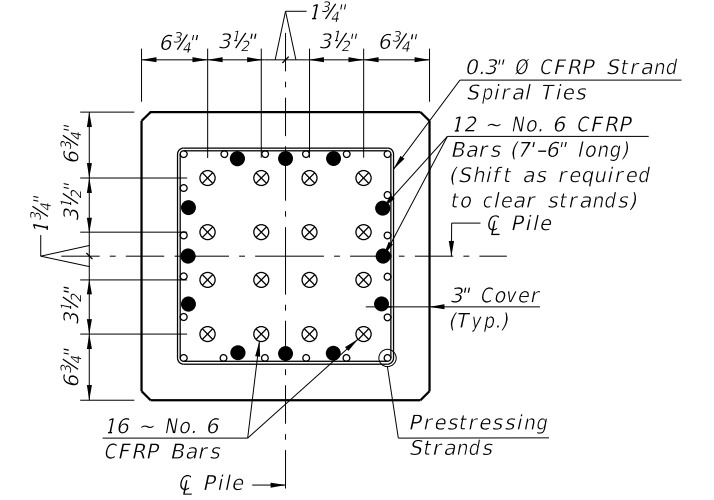
1. Work this Index with Index D22600 - Notes and Details for Square CFRP Prestressed Concrete Piles and Index D22601 - Square CFRP Prestressed Concrete Pile Splices.
2. Any of the given Alternate Strand Patterns may be utilized. The strands shall be located as follows:
Place one strand at each corner and place the remaining strands equally spaced between the corner strands.
The total strand pattern shall be concentric with the nominal concrete section of the pile.



SECTION D-D
(See Nondrivable Unforeseen Reinforced Precast Pile Splice Detail)



SECTION E-E
(See Drivable Prestressed Precast Pile Splice Detail)



SECTION F-F
(See Drivable Preplanned Pile Splice Detail)

11/7/2014 2:50:10 PM

LAST REVISION 11/01/14	DESCRIPTION:	FDOT DEVELOPMENTAL DESIGN STANDARDS	24" SQUARE CFRP PRESTRESSED CONCRETE PILE	INDEX NO. D22624	SHEET NO. 1 of 1
---------------------------	--------------	-------------------------------------	---	---------------------	---------------------