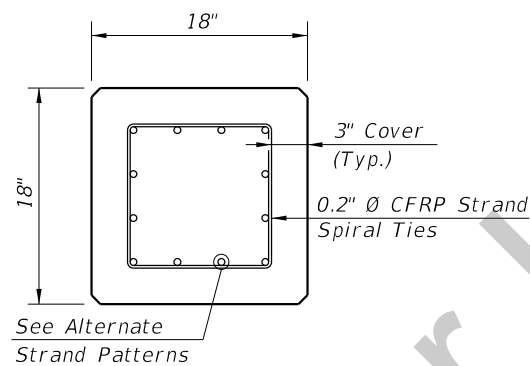


ELEVATION

\*\* See Note No. 4 on Index No. D22601

ALTERNATE STRAND PATTERNS

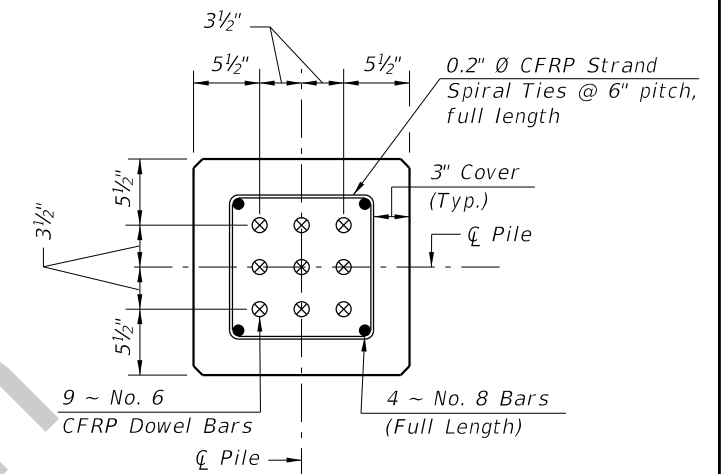
- 12 ~ 0.6" Ø, CFRP Strand, at 34 kips
- 12 ~ 1/2" Ø, CFRP Strand, at 33 kips



SECTION A-A

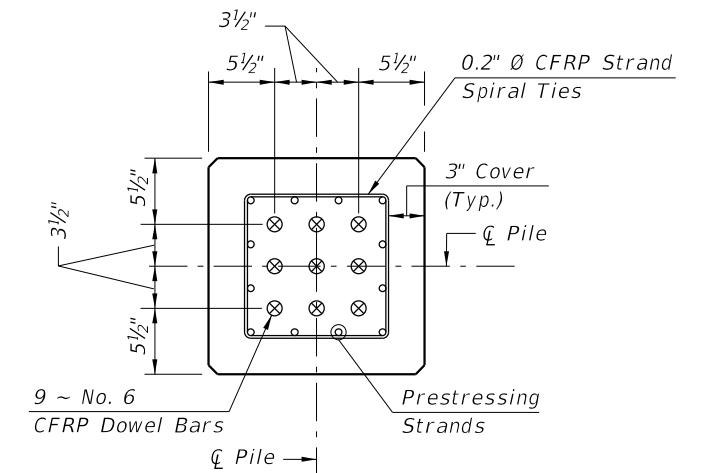
NOTES:

1. Work this Index with Index D22600 - Notes and Details for Square CFRP Prestressed Concrete Piles and Index D22601 - Square CFRP Prestressed Concrete Pile Splices.
2. Any of the given Alternate Strand Patterns may be utilized. The strands shall be located as follows:  
Place one strand at each corner and place the remaining strands equally spaced between the corner strands.  
The total strand pattern shall be concentric with the nominal concrete section of the pile.



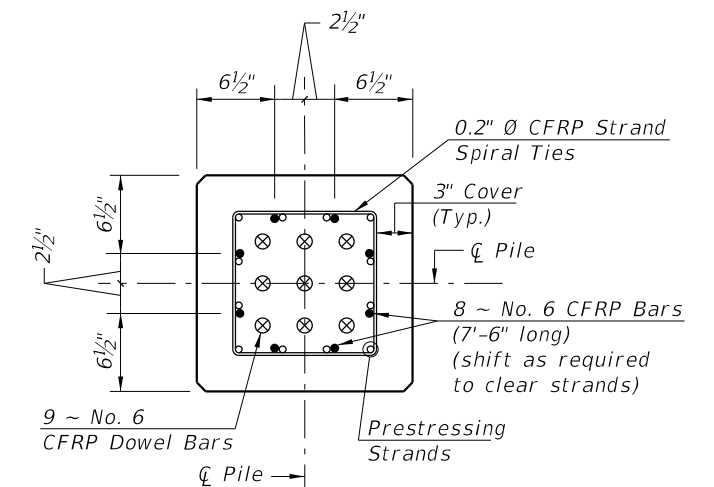
SECTION D-D

(See Nondrivable Unforeseen Reinforced Precast Splice Detail)



SECTION E-E

(See Drivable Prestressed Precast Splice Detail)



SECTION F-F

(See Drivable Preplanned Splice Detail)

PILE SPLICE REINFORCEMENT DETAILS

3/3/2016 5:10:55 PM

LAST REVISION 03/04/16	DESCRIPTION:
---------------------------	--------------



DEVELOPMENTAL  
DESIGN STANDARDS

18" SQUARE CFRP PRESTRESSED  
CONCRETE PILE

INDEX NO.  
D22618

SHEET NO.  
1 of 1