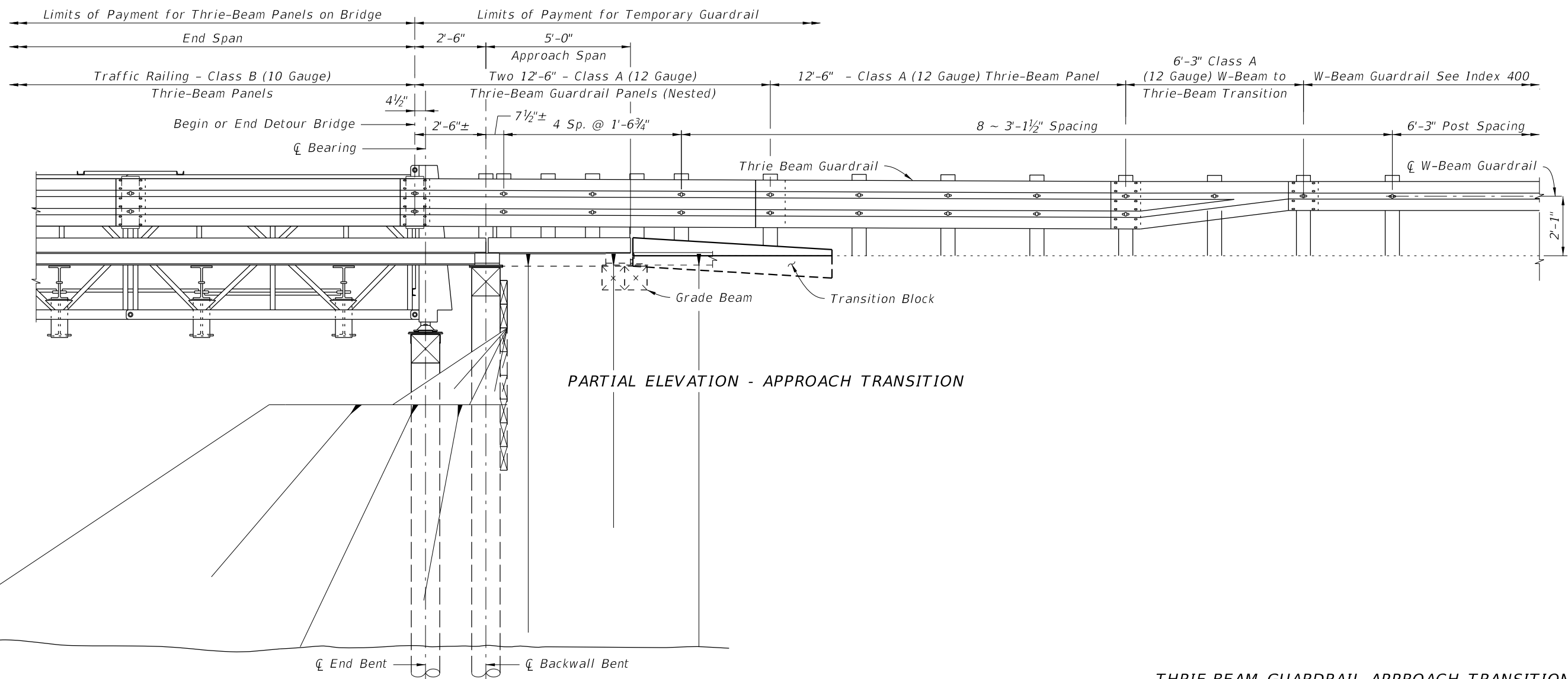


PARTIAL PLAN - APPROACH TRANSITION



PARTIAL ELEVATION - APPROACH TRANSITION

10/26/2016 9:15:30 AM

THRIE-BEAM GUARDRAIL APPROACH TRANSITION

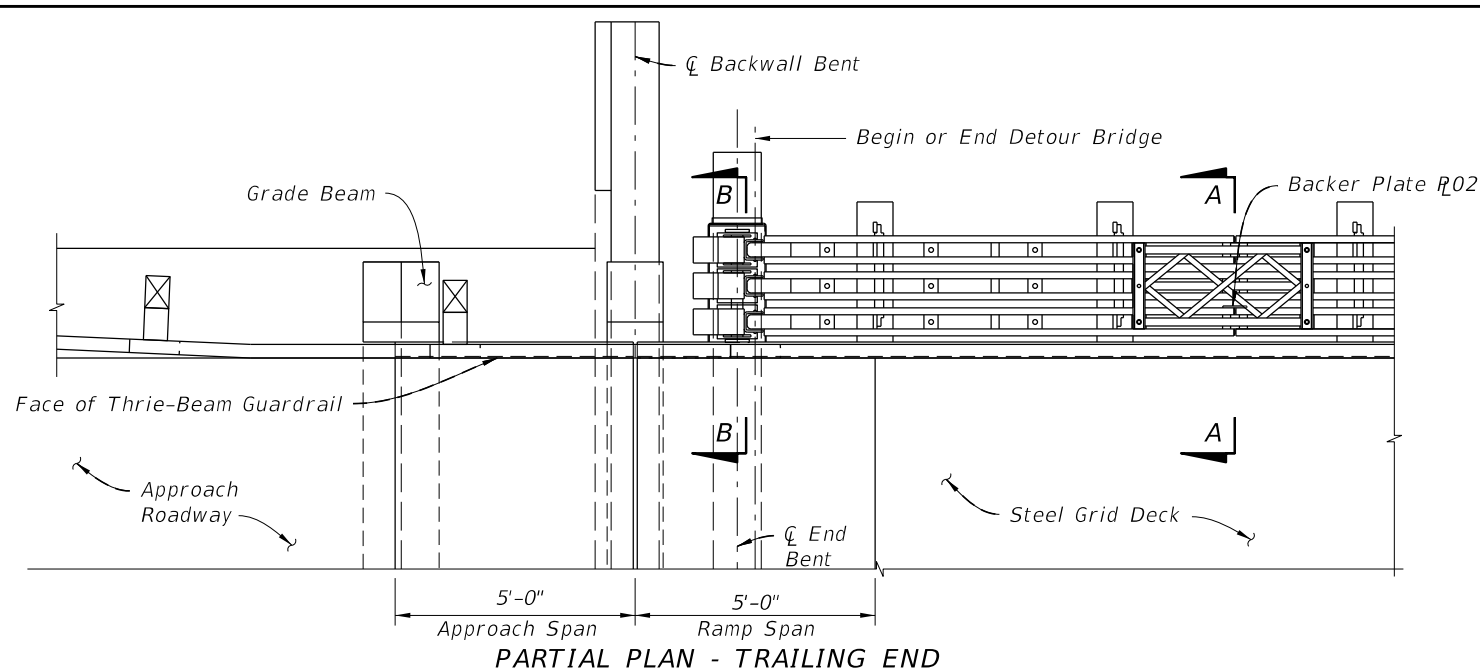
LAST REVISION 07/01/15	DESCRIPTION:
---------------------------	--------------



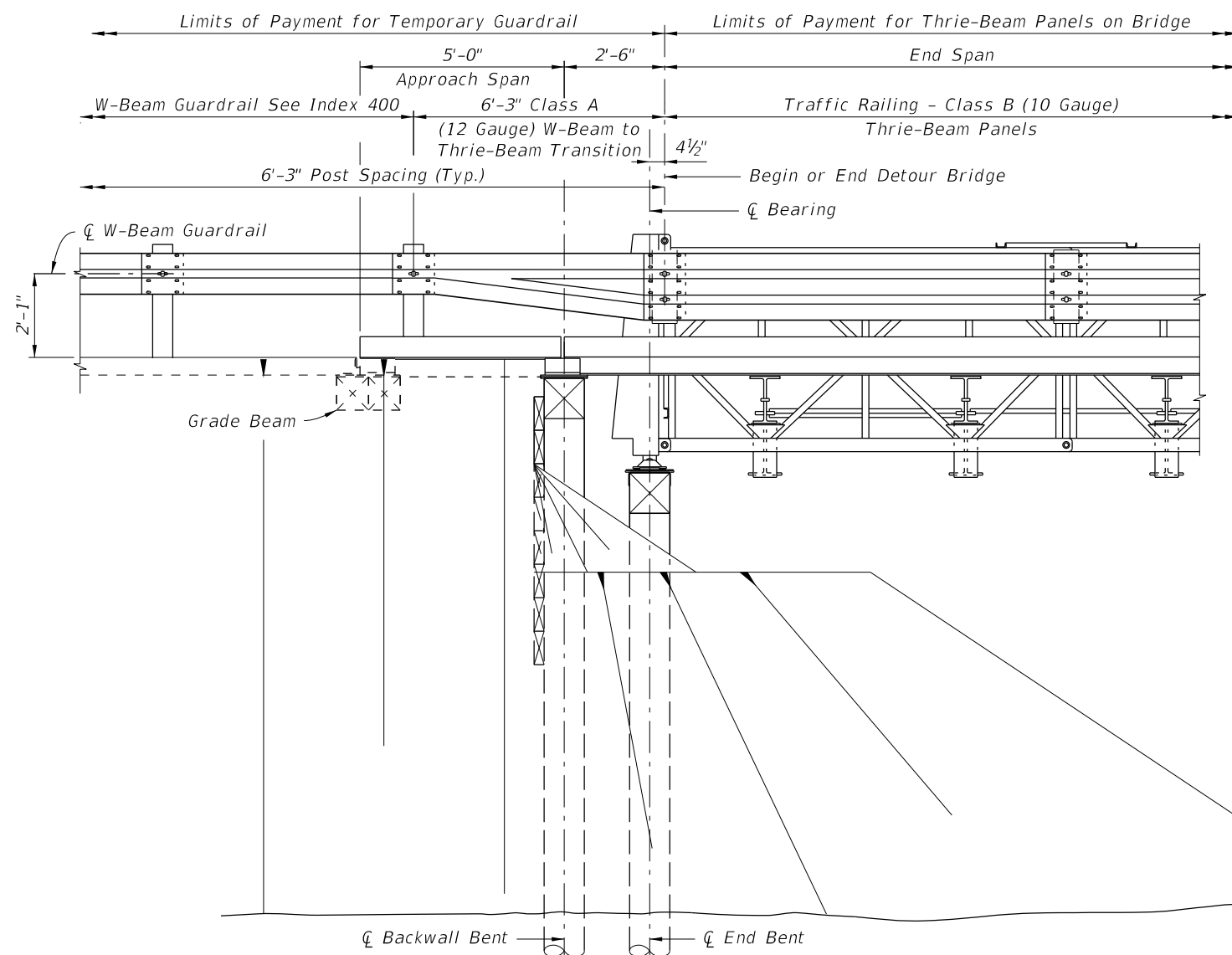
TEMPORARY DETOUR BRIDGE  
THRIE-BEAM GUARDRAIL

INDEX NO.  
21640

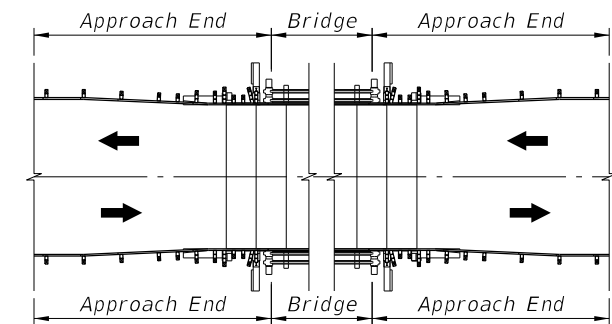
SHEET NO.  
1 of 6



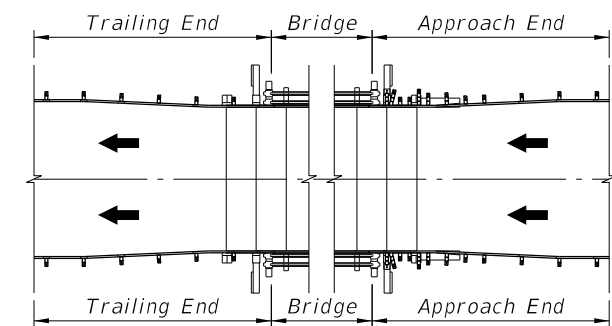
PARTIAL PLAN - TRAILING END



PARTIAL ELEVATION - TRAILING END



TWO-WAY TRAFFIC



ONE-WAY TRAFFIC

END TRANSITION APPLICATION DETAILS

10/26/2016 9:15:33 AM

LAST REVISION  
07/01/15

REVISION

DESCRIPTION:



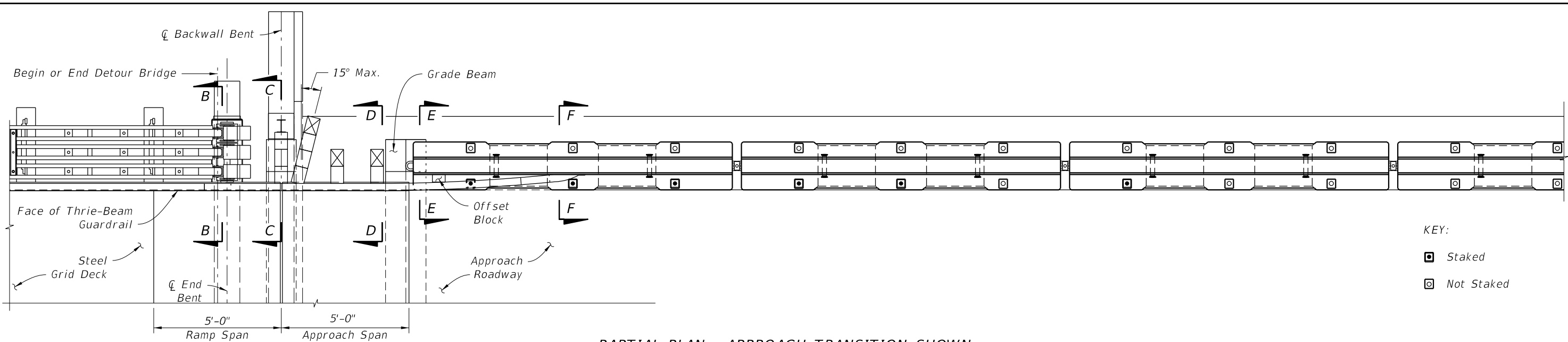
FY 2017-18  
DESIGN STANDARDS

TEMPORARY DETOUR BRIDGE  
THRIE-BEAM GUARDRAIL

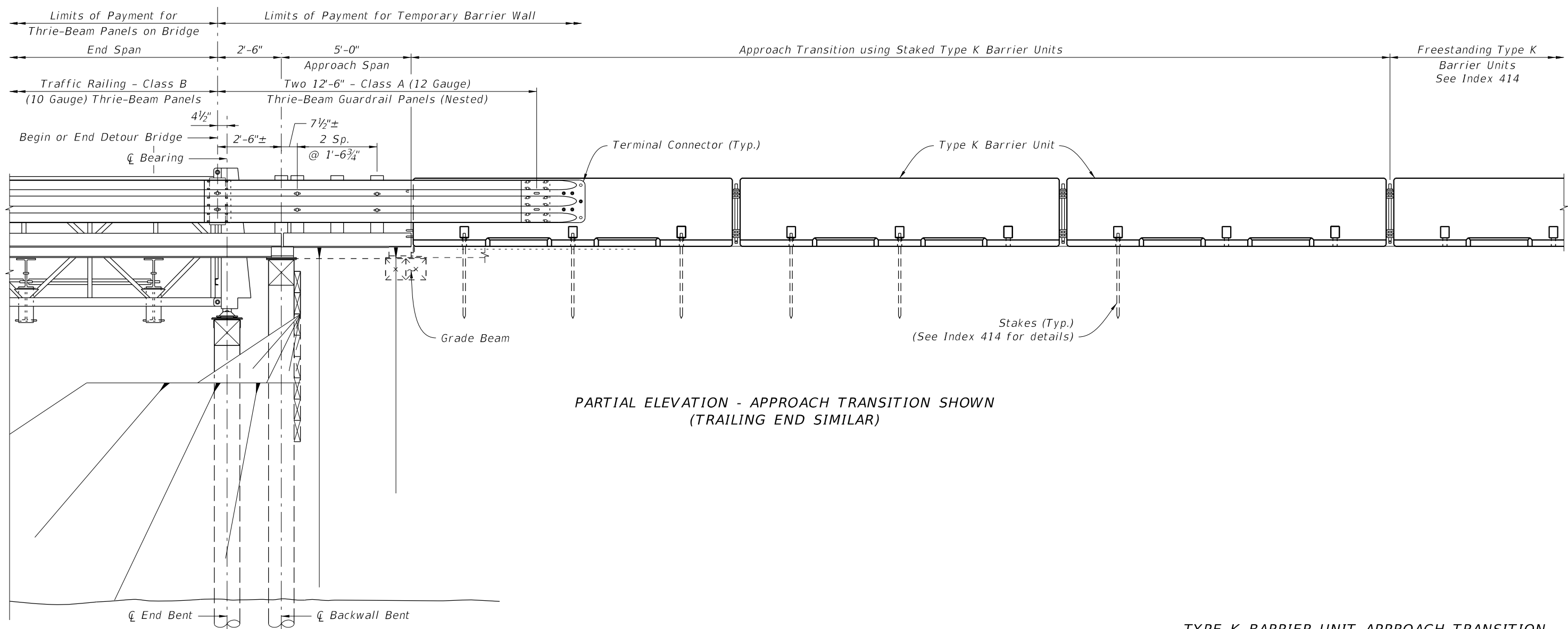
INDEX NO.  
21640

SHEET NO.  
2 of 6

THRIE-BEAM GUARDRAIL TRAILING END TRANSITION



PARTIAL PLAN - APPROACH TRANSITION SHOWN  
(TRAILING END SIMILAR)



PARTIAL ELEVATION - APPROACH TRANSITION SHOWN  
(TRAILING END SIMILAR)

TYPE K BARRIER UNIT APPROACH TRANSITION

10/26/2016 9:15:35 AM

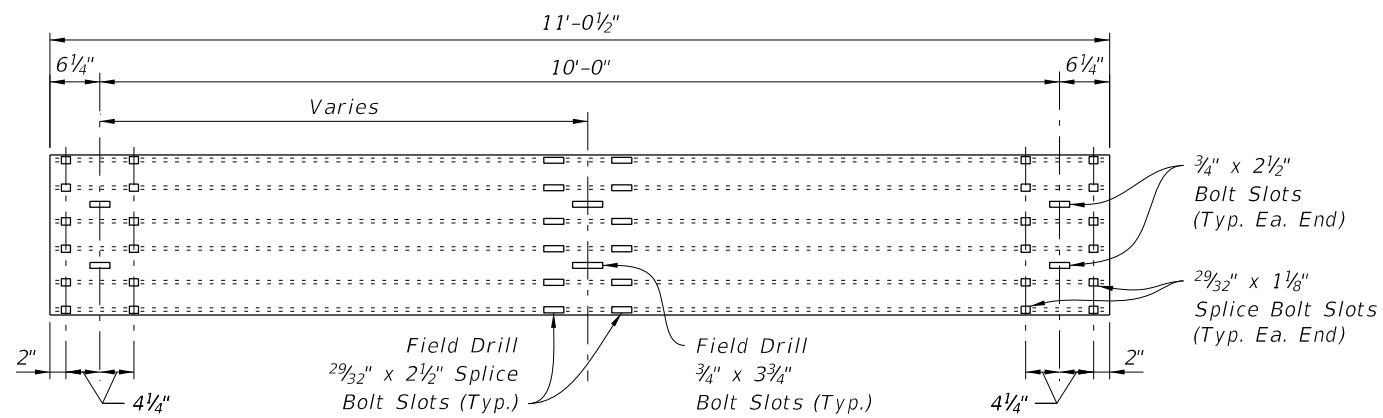
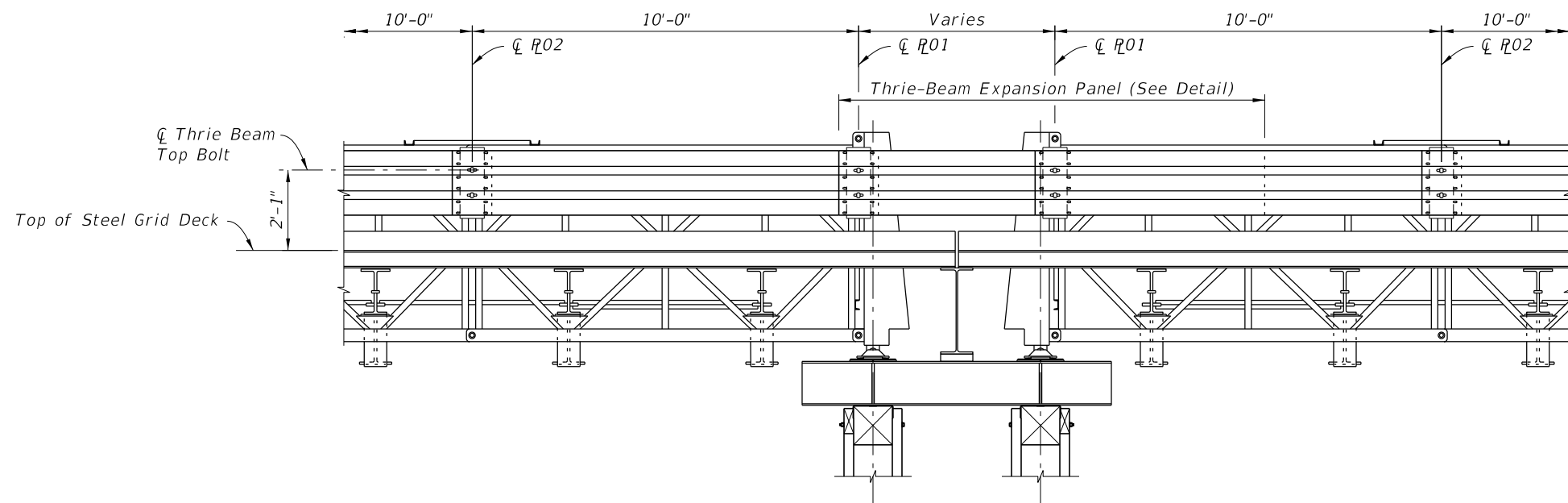
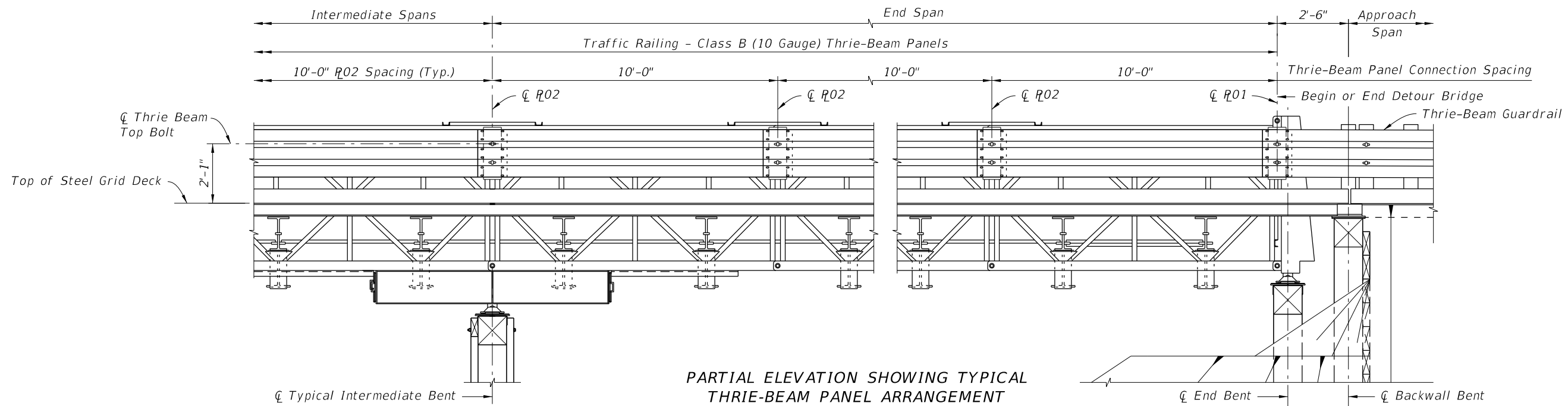
LAST REVISION 07/01/15	REVISION	DESCRIPTION:
---------------------------	----------	--------------




TEMPORARY DETOUR BRIDGE  
THRIE-BEAM GUARDRAIL

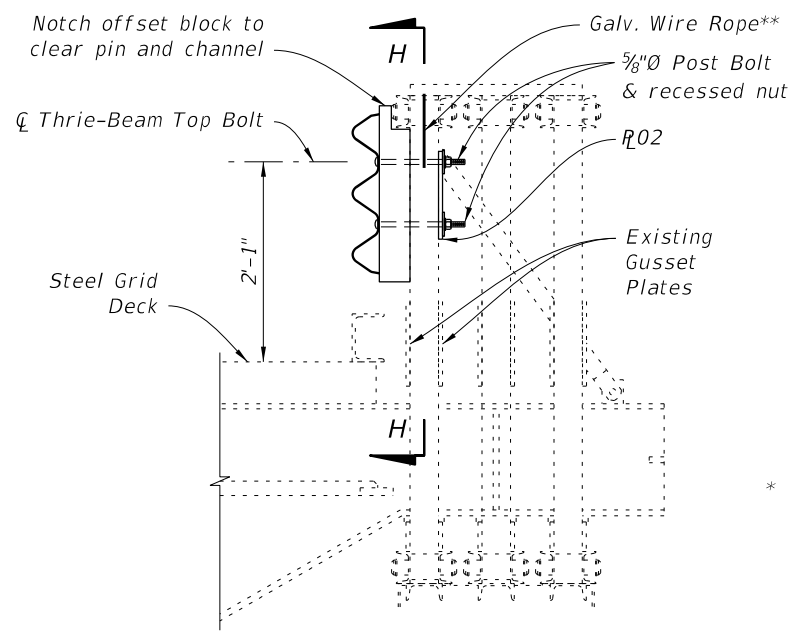
INDEX NO.  
21640

SHEET NO.  
3 of 6

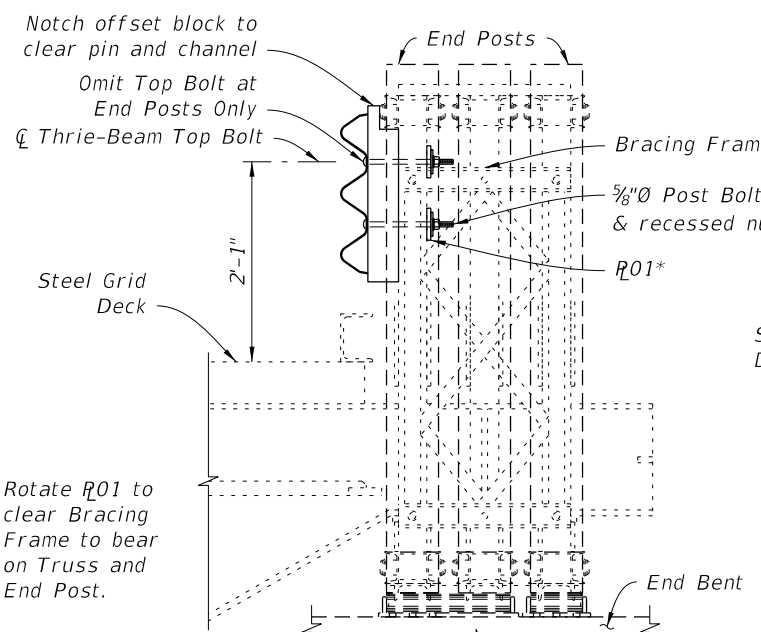


10/26/2016 9:15:40 AM

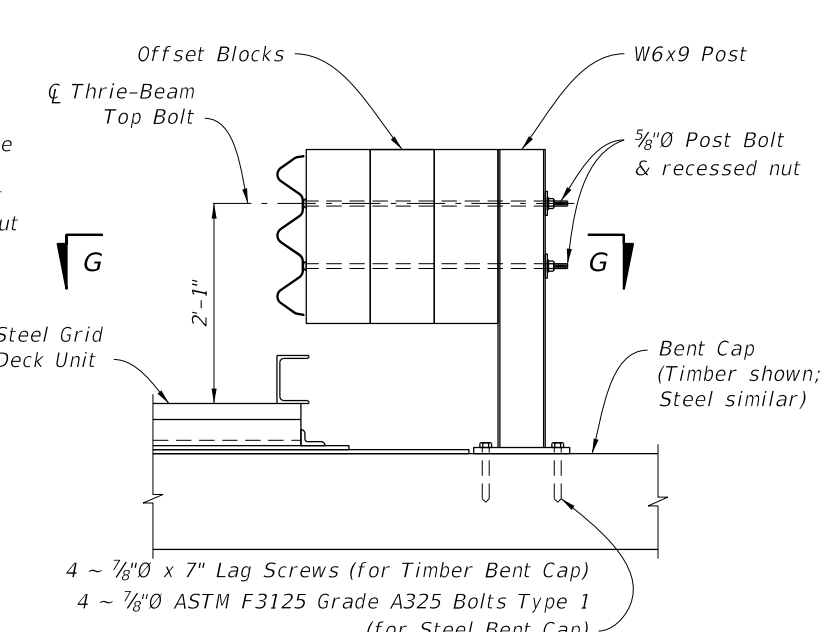
LAST REVISION 07/01/15	REVISION	DESCRIPTION:	 <b>FY 2017-18 DESIGN STANDARDS</b>	<b>TEMPORARY DETOUR BRIDGE THRIE-BEAM GUARDRAIL</b>	INDEX NO. <b>21640</b>	SHEET NO. <b>4 of 6</b>
---------------------------	----------	--------------	--	---	---------------------------	----------------------------



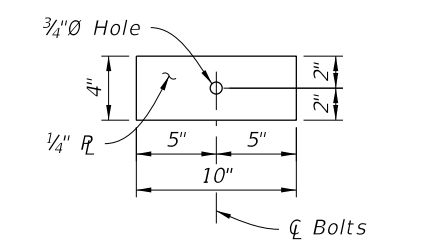
SECTION A-A



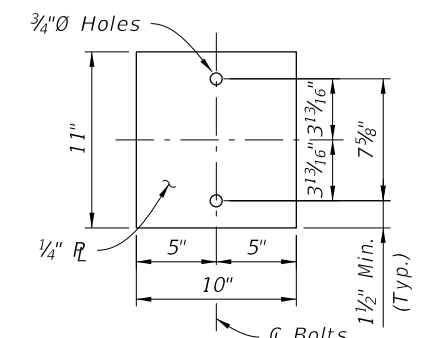
SECTION B-B



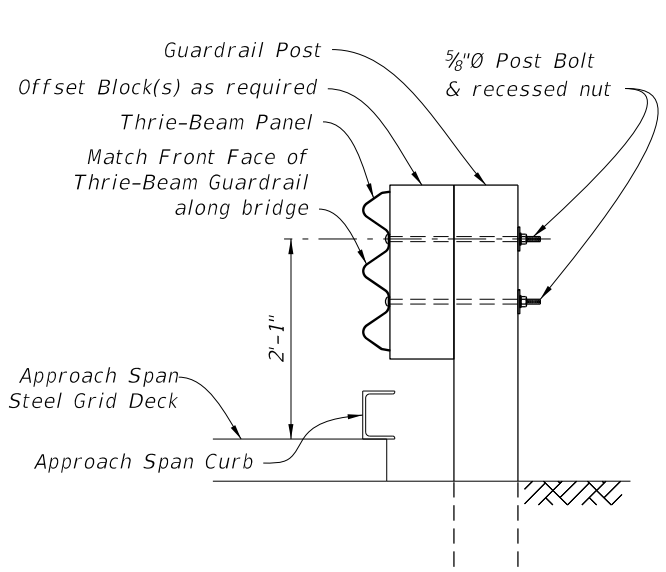
SECTION C-C



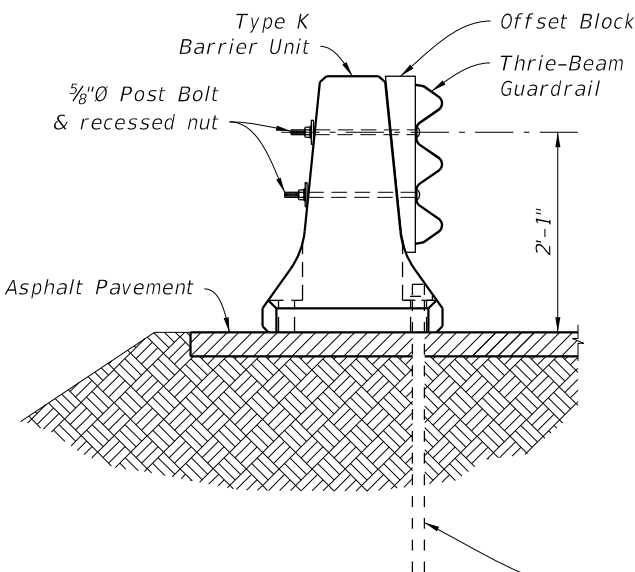
BACKER PLATE R01 DETAIL



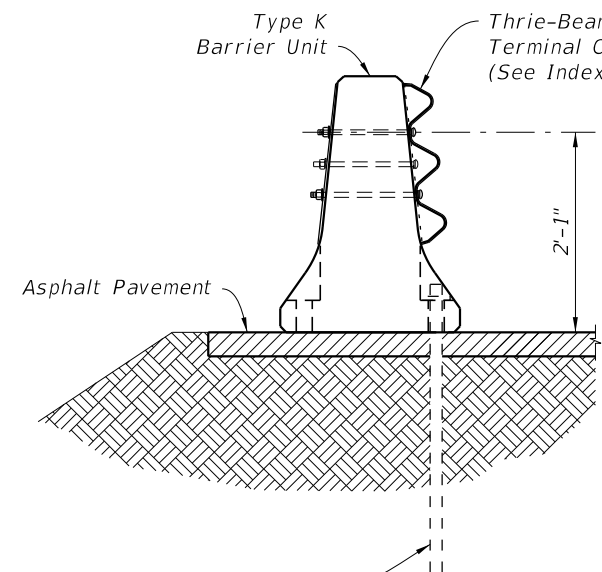
BACKER PLATE R02 DETAIL



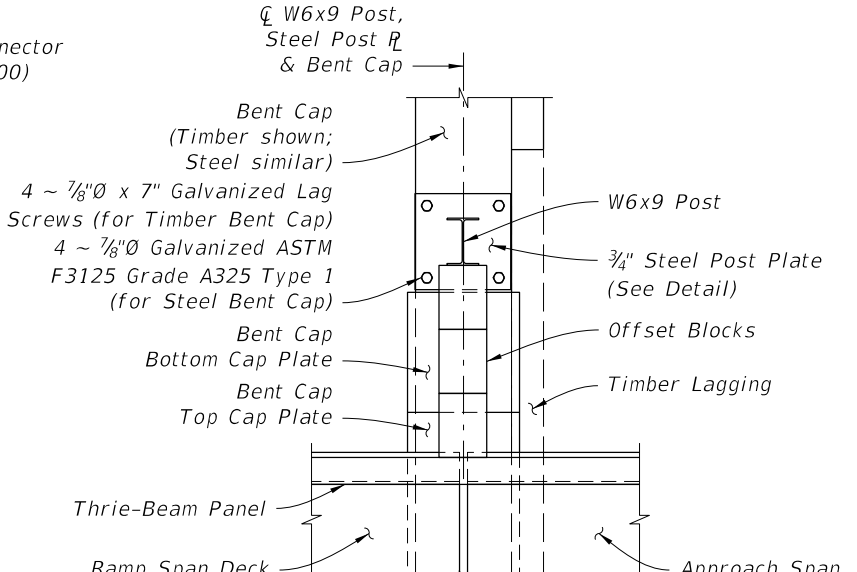
SECTION D-D



SECTION E-E

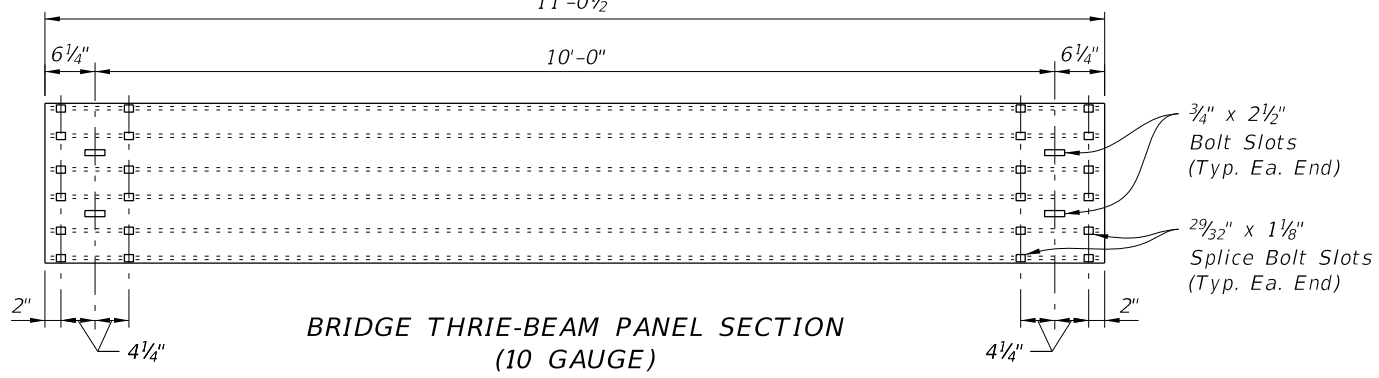


SECTION F-F

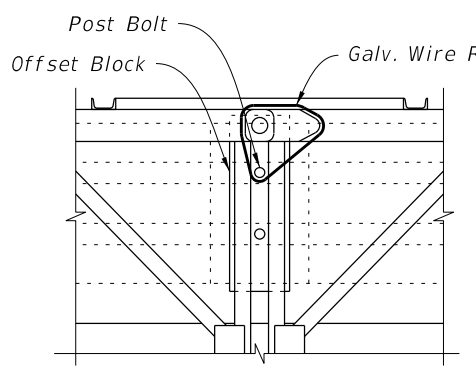


VIEW G-G

(Adjacent Post and Offset Blocks not shown for clarity)

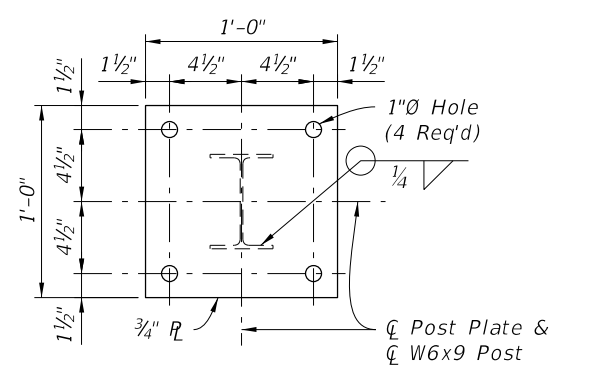


BRIDGE THRIE-BEAM PANEL SECTION (10 GAUGE)



SECTION H-H

\*\* As directed by the Engineer in order to limit vibration induced vertical displacement of the Thrie-Beam Panels, provide Contractor supplied, one time use, commercially available 3/16 inch diameter (Min.) Galvanized Wire Rope w/ Ferrules (or other approved wire type) positioned and tensioned as required to secure the Panels.

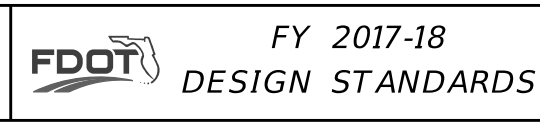


STEEL POST PLATE DETAIL

SECTIONS AND DETAILS

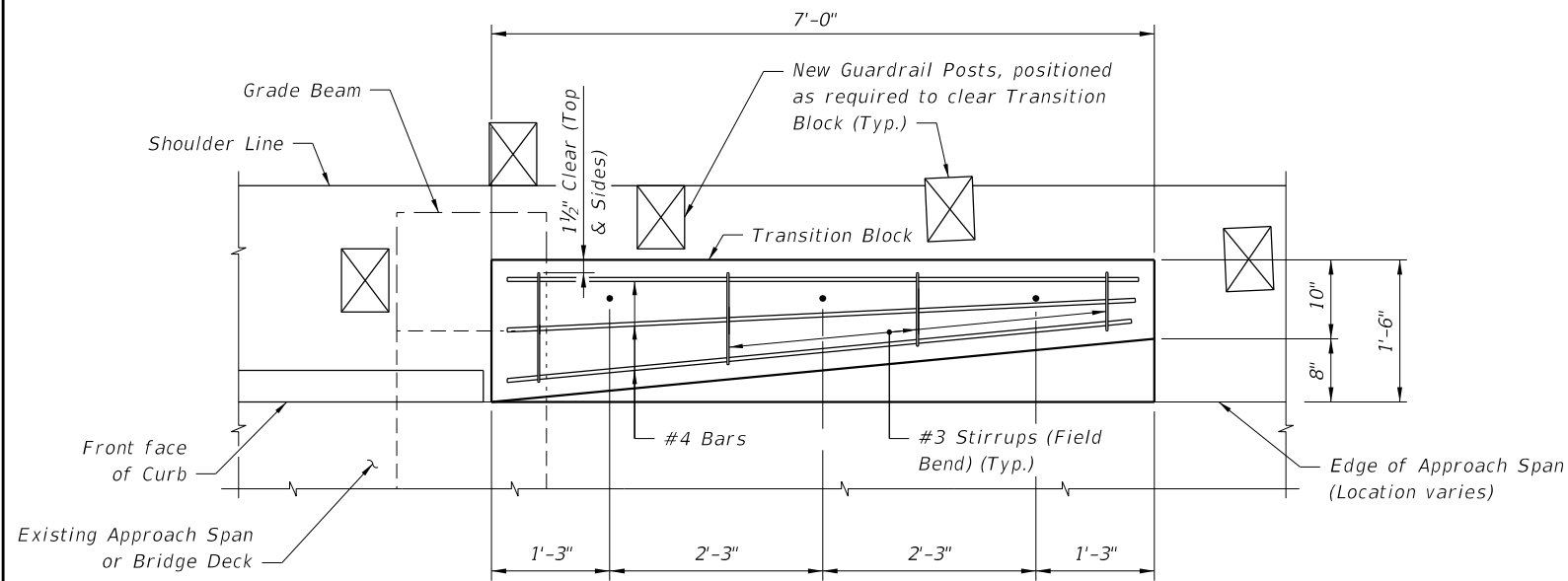
10/26/2016 9:15:43 AM

LAST REVISION	DESCRIPTION:
11/01/16	

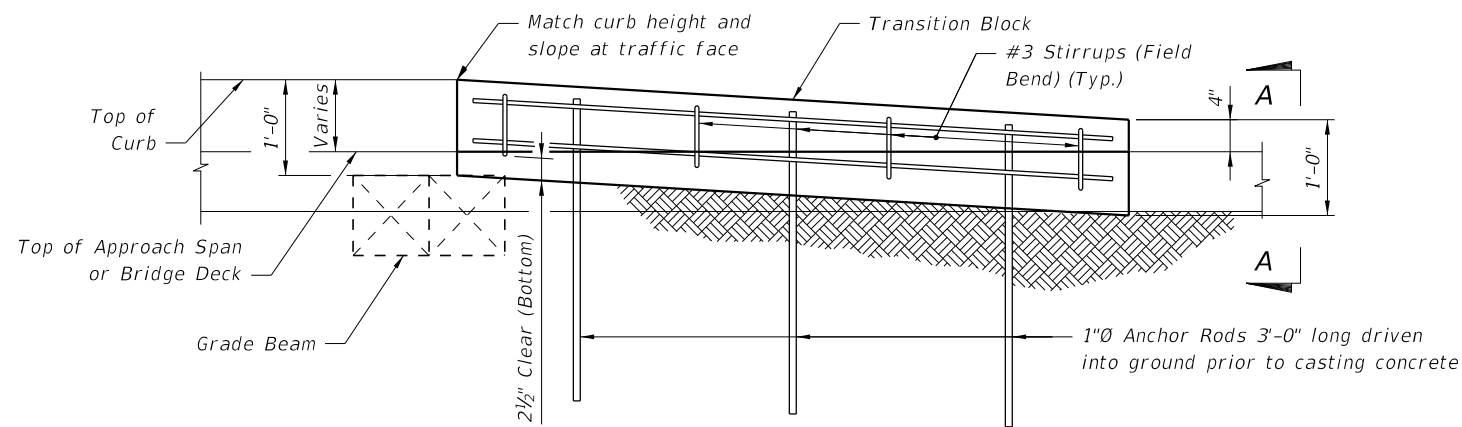


TEMPORARY DETOUR BRIDGE THRIE-BEAM GUARDRAIL

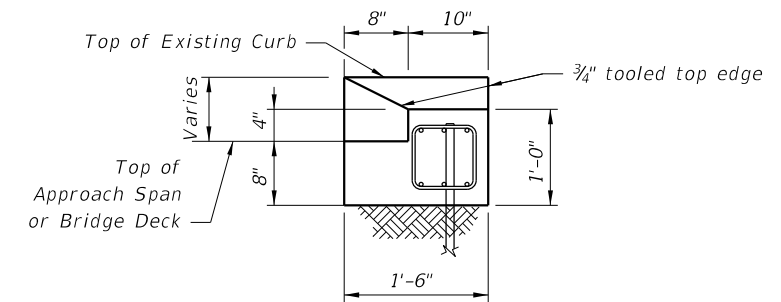
INDEX NO.	SHEET NO.
21640	5 of 6



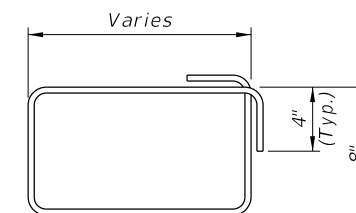
PLAN VIEW OF TRANSITION BLOCK  
(GUARDRAIL NOT SHOWN FOR CLARITY)



ELEVATION OF TRANSITION BLOCK  
(GUARDRAIL AND POSTS NOT SHOWN FOR CLARITY)



END VIEW A-A



#3 STIRRUP (FIELD BEND)

NOTES:

REINFORCING STEEL: Reinforcing steel shall be ASTM A615, Grade 60.

ANCHOR RODS: Steel Anchor Rods shall be ASTM A36, ASTM A709 Grade 36 or ASTM A615 Grade 60 hot-dip galvanized in accordance with Specification Section 962.

ESTIMATED QUANTITIES

ITEM	UNIT	QUANTITY
Concrete Class NS	CY	0.4
Reinforcing Steel	LB	61
Guardrail (Reset)	LF	12.5

10/26/2016 9:15:48 AM

LAST REVISION 07/01/13	DESCRIPTION:
---------------------------	--------------