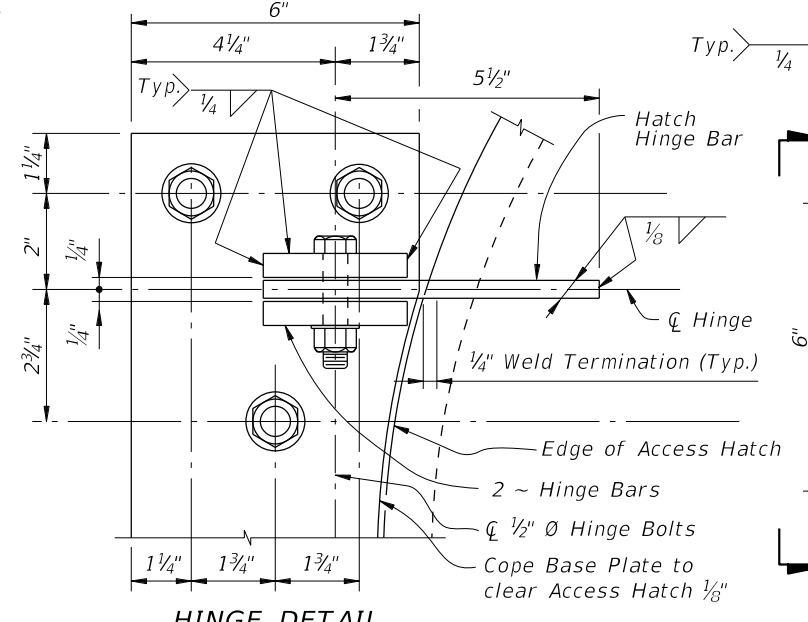
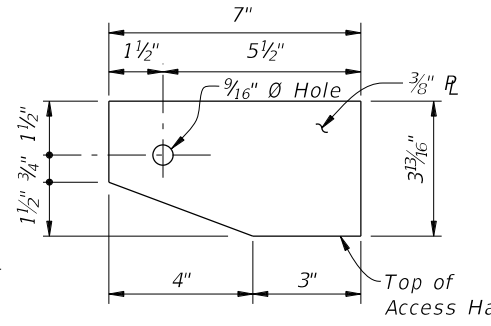


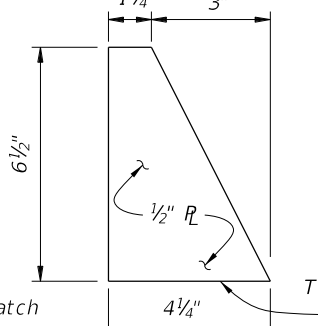
PLAN VIEW OF ACCESS HATCH ASSEMBLY



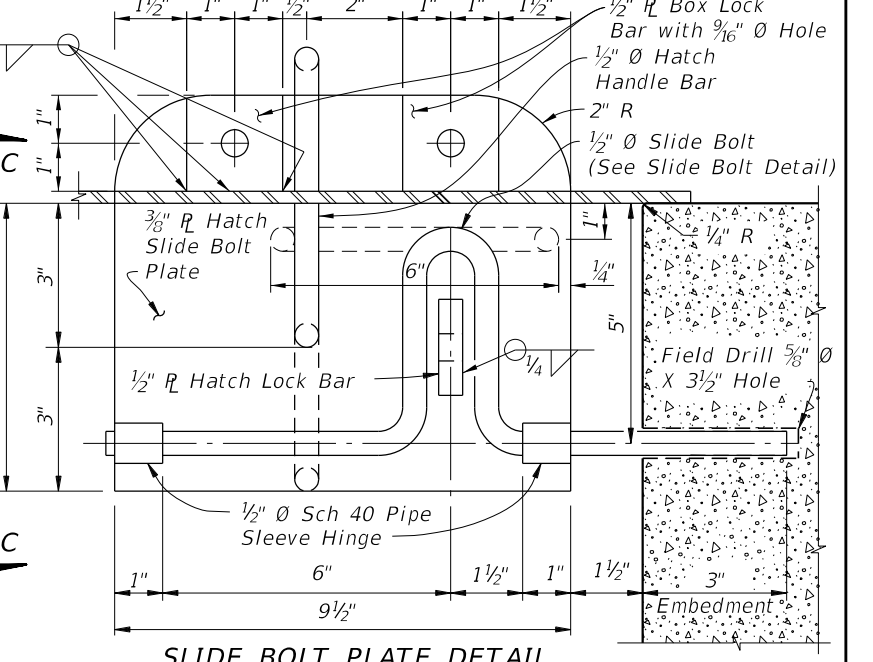
HINGE DETAIL



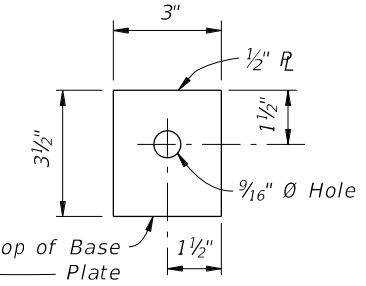
HATCH HINGE BAR DETAIL



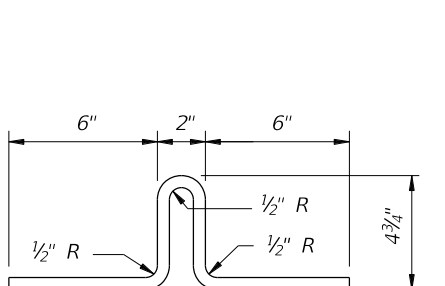
STOP BAR DETAIL



SLIDE BOLT PLATE DETAIL

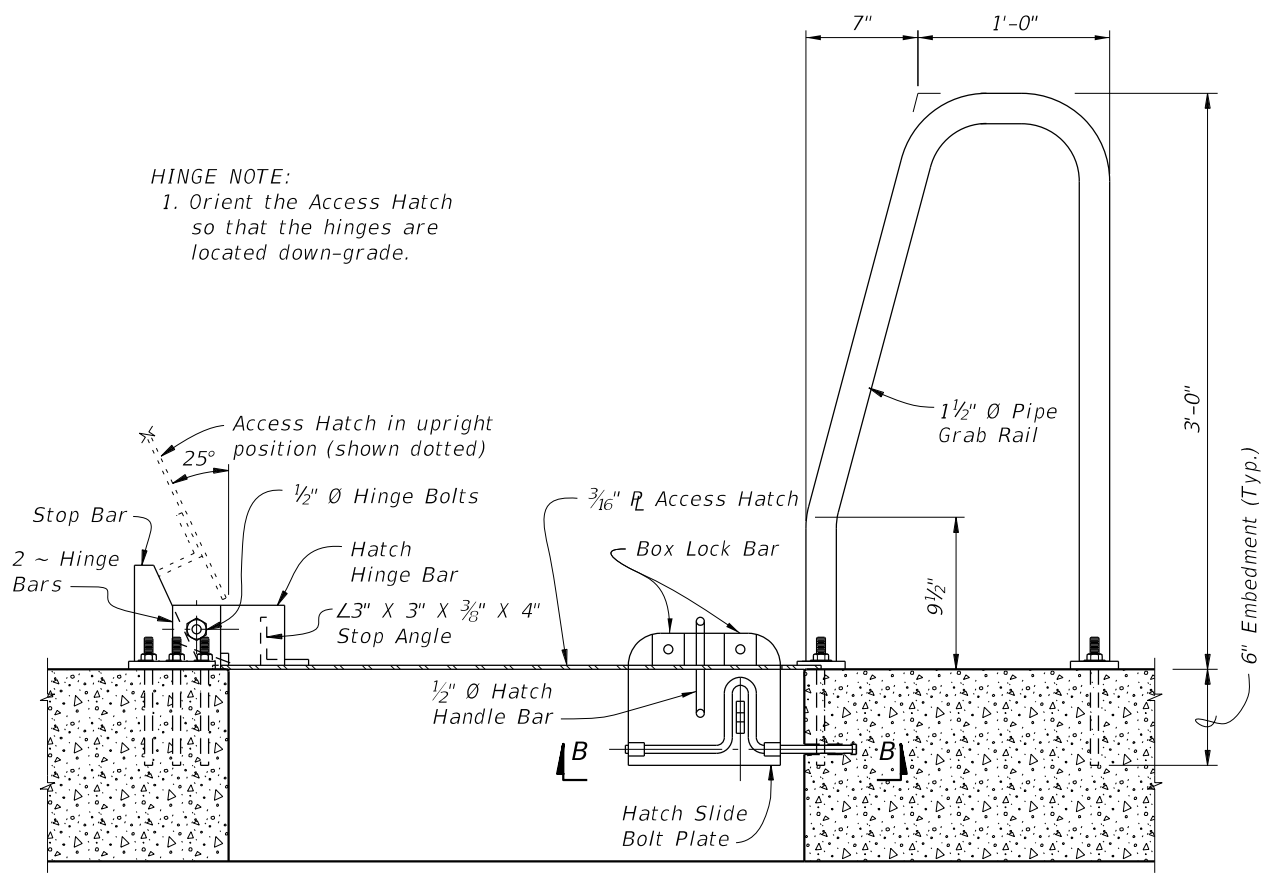


HINGE BAR DETAIL

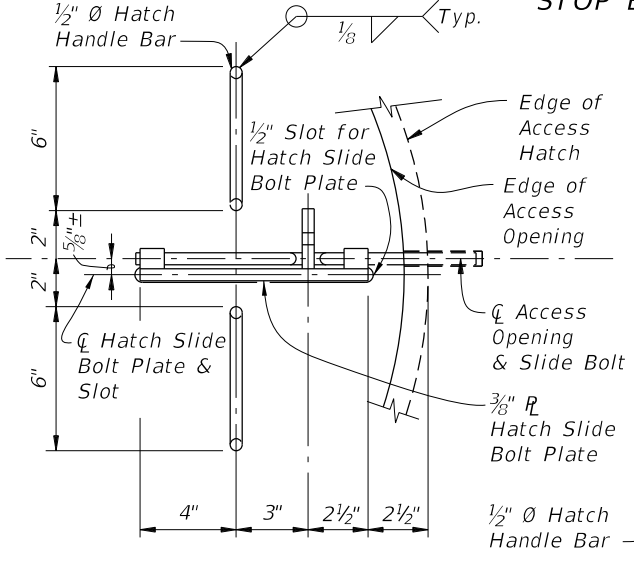


SLIDE BOLT DETAIL

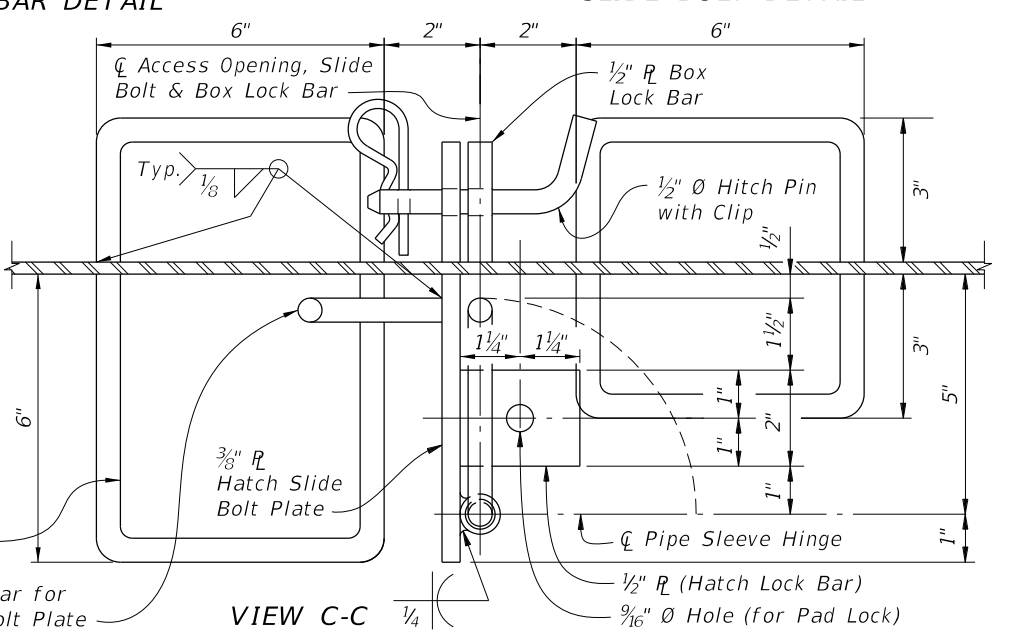
HINGE NOTE:
1. Orient the Access Hatch so that the hinges are located down-grade.



SECTION THRU ACCESS OPENING



VIEW B-B



VIEW C-C

NOTES:

- All Structural Steel material in Access Hatch Assemblies shall conform to ASTM A709 Grade 36.
- 1 1/2" Ø Pipe Grab Rail shall be in accordance with ASTM A53 Grade B for standard weight pipe (Schedule 40).
- 1/2" Ø Hatch Handle Bar and Hitch Pin shall be in accordance with ASTM A36.
- All bolts shall conform to ASTM A307 or A449. All nuts shall conform to ASTM A563 and all washers shall conform to ASTM F-436.
- All exposed edges of plates and openings shall be ground smooth.
- See Framing Plan sheets for locations of Access Hatch Openings.
- Coat structural steel in accordance with Specification Section 560.
- Include the cost of the Access Hatch Assembly and incidental items in the cost of the Concrete Box Section.

10/26/2016 9:07:59 AM

LAST REVISION 07/01/15	REVISION	DESCRIPTION:	 FY 2017-18 DESIGN STANDARDS	ACCESS HATCH ASSEMBLY FOR CONCRETE BOX SECTIONS	INDEX NO. 21251	SHEET NO. 1 of 1
---------------------------	----------	--------------	------------------------------------	--	--------------------	---------------------