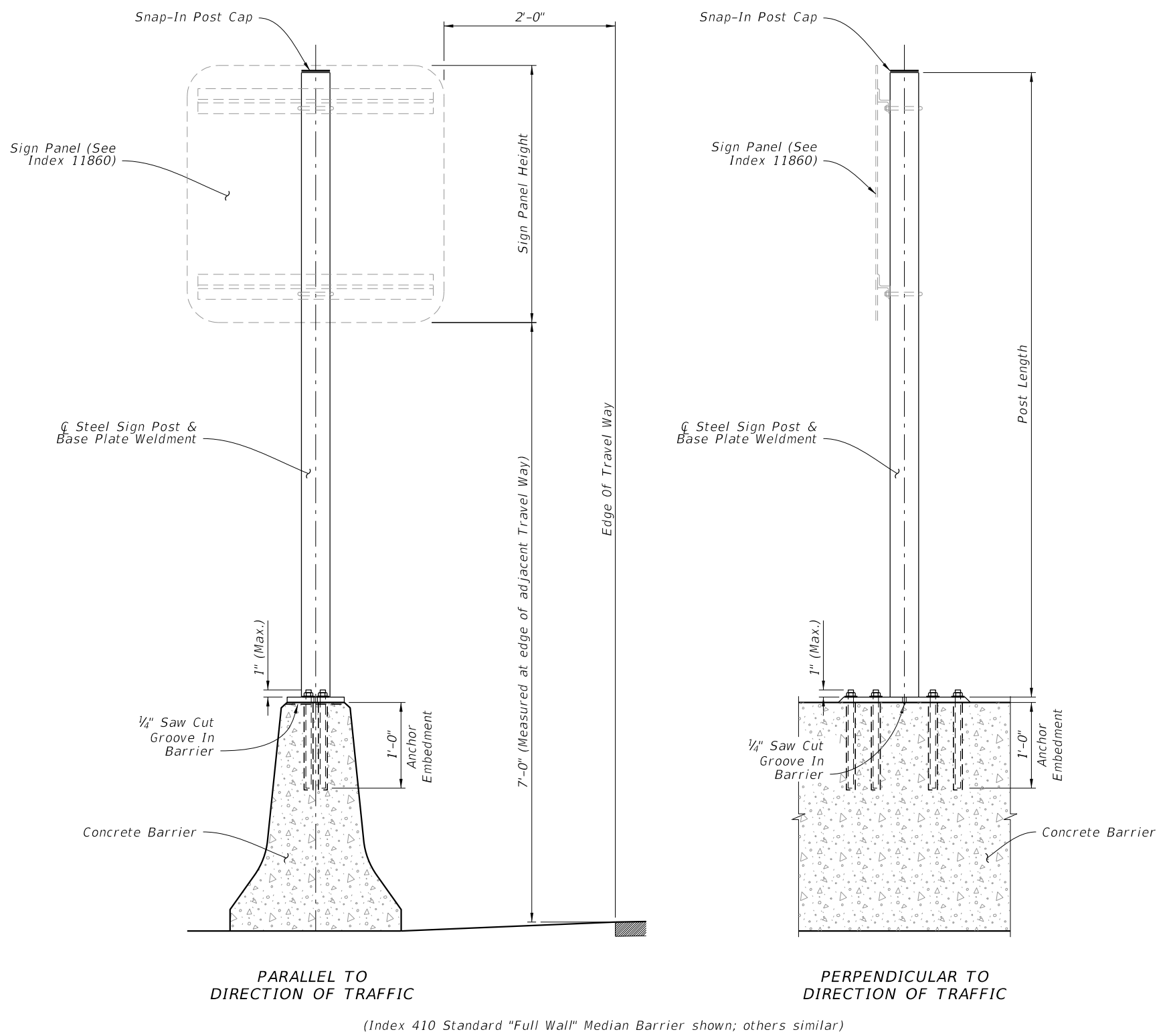


NOTES:

1. Work with Index 11860.
2. Shop Drawings: Not required.
3. Materials:
 - A. Steel Plate: ASTM A36 or ASTM A709 Grade 36
 - B. Steel Pipe (Support Post): ASTM A501 Schedule 40
 - C. Galvanized U-Bolts, Nuts and Plate Washer
 - a. U-Bolts: ASTM A449
 - b. Hex Nuts: ASTM A 536 Lock Nuts
 - c. Plate Washer: ASTM A 36 or ASTM A709 Grade 36 or 50
 - D. Galvanized Anchor Bolts, Nuts and Washers:
 - a. Anchor Rod: ASTM F1554 Grade 55 fully threaded (for Adhesive Anchors)
 - b. Anchor Bolts: ASTM F1554 Grade 55 Grade A Hex
 - c. Nuts: ASTM A563 Heavy Hex Locking
 - d. Washers: ASTM F436
 - E. Adhesive Anchor Bonding Material: Specification Section 931 Type HV Adhesive
 - F. Weld Material: E70XX
 - G. Snap-In Post Cap: UV and weather-resistant glass-filled polyester cap
4. Coating:
 - A. U-Bolts, Threaded Rods, Nuts and Washers: ASTM F2329
 - B. Other Steel: ASTM A123
5. Fabrication:
 - A. Weld: Specification Section 460-6.4
 - B. Hot dip galvanize after fabrication
6. Construction:
 - A. Locate Sign Support a minimum of 5 feet from an open joint or transition (sign stationing may be adjusted to accommodate this requirement)
 - B. Base plate must be flush with top of Railing
 - C. Anchors in Traffic Railings:
 - a. Install Adhesive Anchors in accordance with Specification section 416 except perform field test on one anchor per sign support location
 - b. Use template and tie anchors as necessary to maintain correct placement of C-I-P Embedded Anchors
 - c. Do not drill into existing reinforcing
 - D. Temporary Signs on Permanent Traffic Railings, Same as Permanent except field testing of anchors is not required
 - E. Temporary Signs on Temporary Railings/Barriers:
 - a. Install Sign Supports at the midpoint along the length of a single segment
 - b. Avoid drilling through existing reinforcing; use of metal detector not required.
 - c. Field testing of anchors is not required
7. Removal of Temporary Signs on Permanent Traffic Railings:
 - A. Cut anchor rods flush with the top of the railing
 - B. Coat anchors with Type F-1 epoxy to prevent corrosion
 - a. Extend coating 2 inches beyond edge of cut anchor rods
 - b. Epoxy coating 1/16" thick minimum
8. Payment:

Include the cost of all materials and labor in the cost of the single post sign assembly.

	Max. Sign Area (SF)	Post Ø (NPS)
Temporary Signs	≤ 24	3.0"
Permanent Signs	< 13.5	3.0"
	13.5 < Sign < 20	3.5"

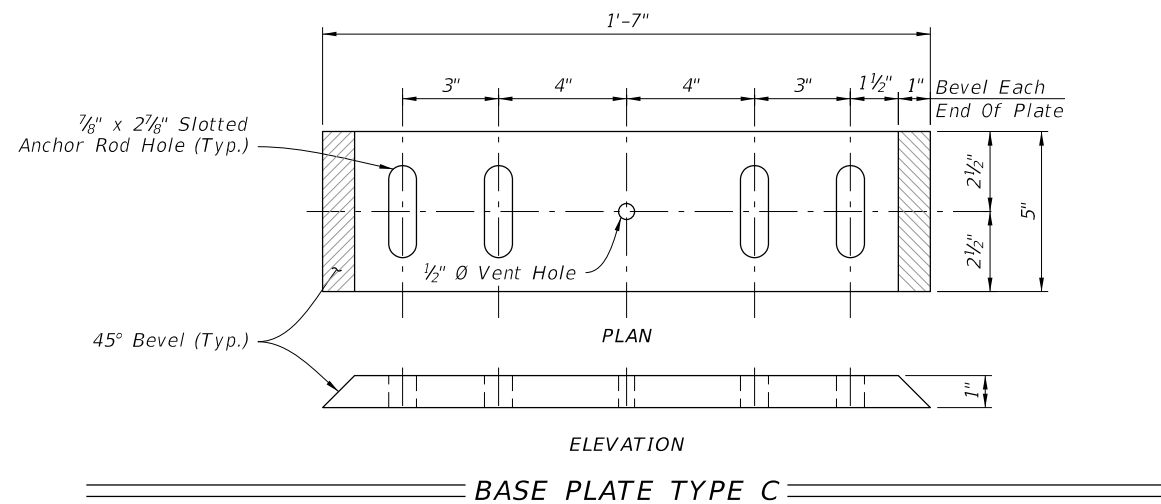
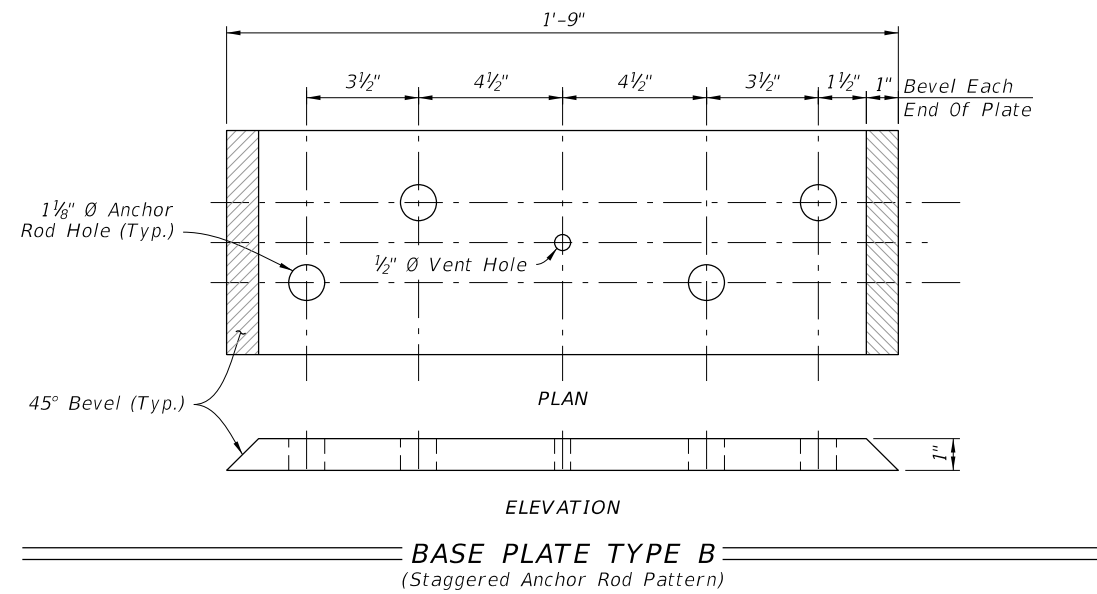
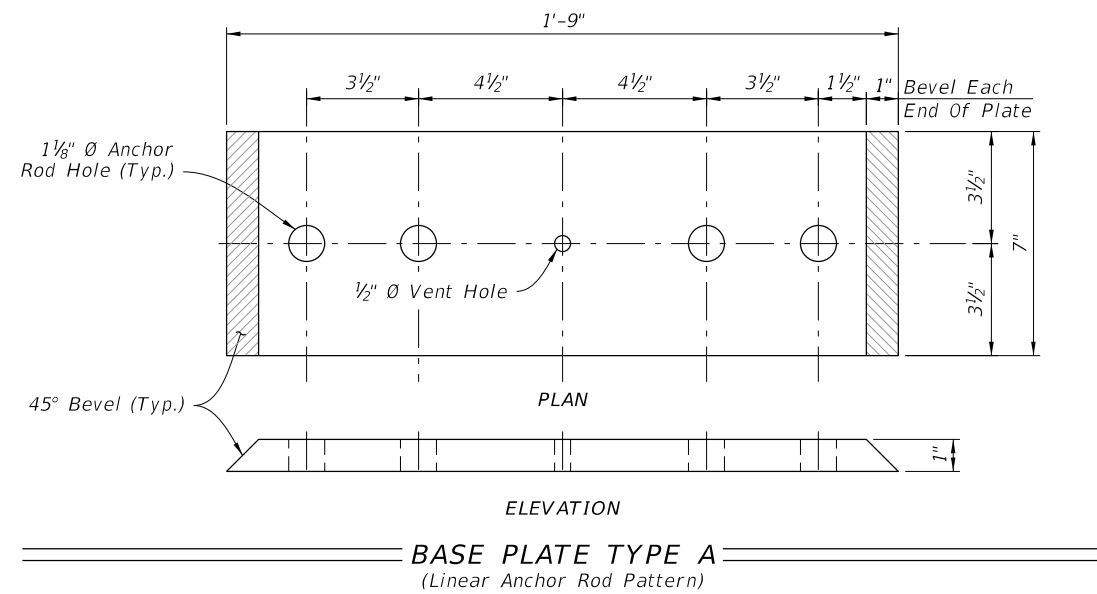


(Index 410 Standard "Full Wall" Median Barrier shown; others similar)

ELEVATION

10/14/2016 8:06:28 AM

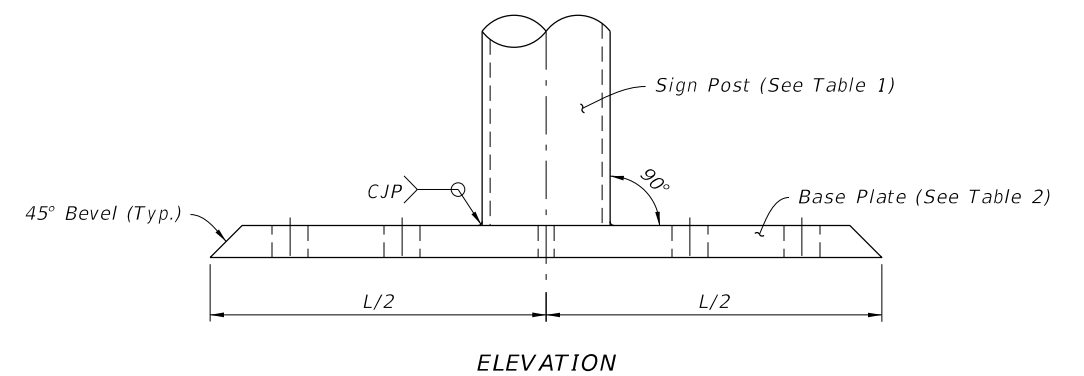
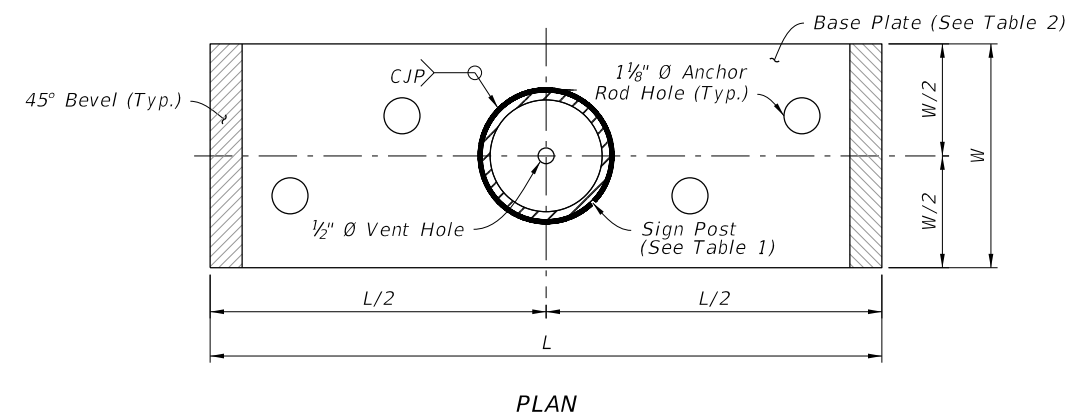
LAST REVISION 11/01/16	REVISION	DESCRIPTION:	 FY 2017-18 DESIGN STANDARDS	SINGLE POST MEDIAN BARRIER MOUNTED SIGN SUPPORT	INDEX NO. 11871	SHEET NO. 1 of 2
---------------------------	----------	--------------	------------------------------------	--	--------------------	---------------------



NOTES:

1. Place anchor rods in a staggered or linear pattern as necessary to avoid reinforcing.
2. Use a staggered pattern for all temporary barriers.

Index No.	Type/Application	Base Plate Type	Anchor Rod \emptyset
410	Full Wall	B	1"
410	Cantilever or L-Wall	A	
420 & 425	When Clear Space between Dual Bridge Traffic Railing is \leq 4'-0"	A	
421	All Applications	A	
All listed above Plus 414 & 415	Temporary Signs	C	3/4"



10/20/2016 8:16:26 AM

LAST REVISION 11/01/16	DESCRIPTION:
---------------------------	--------------