

Speed	Spacing (ft.)	
	A	B
40 mph or less	200	200
45 mph	350	350

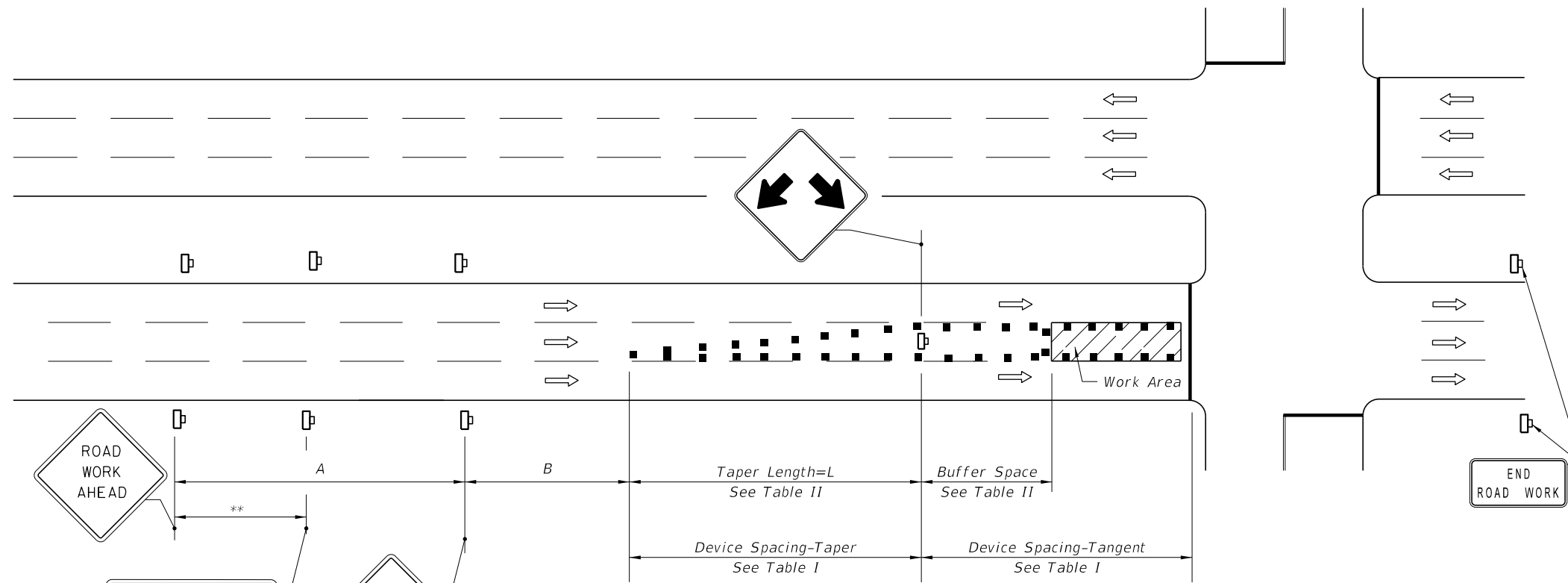
Speed (mph)	Max. Distance Between Devices (ft.)			
	Cones or Tubular Markers		Barricades or Vertical Type I or Type II Panels or Drums	
	Taper	Tangent	Taper	Tangent
25	25	50	25	50
30 to 45	25	50	30	50

Speed (mph)	Buffer Space Dist. (ft.)	Taper Length (12' Lateral Transition)	
		L (ft.)	Notes (Merge)
25	155	125	$L = \frac{WS^2}{60}$
30	200	180	
35	250	245	
40	305	320	$L = WS$
45	360	540	

When Buffer Space cannot be attained due to geometric constraints, the greatest attainable length shall be used, but not less than 200 ft.

For lateral transitions other than 12', use formula for L shown in the notes column. Where:  
 L = Length of taper in feet  
 W = Width of lateral transition in feet  
 S = Posted speed limit (mph)

**CONDITIONS**  
 WHERE ANY VEHICLE, EQUIPMENT, WORKERS OR THEIR ACTIVITIES ENCR OACH ON THE PAVEMENT REQUIRING THE CLOSURE OF THE CENTER LANE NEAR AN INTERSECTION.



\*\* 500' beyond the ROAD WORK AHEAD sign or midway between signs whichever is less.

**GENERAL NOTES**

1. Work operations shall be confined to one center travel lane, leaving the adjacent travel lanes open to traffic.
2. The merging taper shall direct vehicular traffic into either the right or left lane, but not both.
3. When vehicles in a parking zone block the line of sight to TCZ signs, the signs shall be post mounted and located in accordance with Index No. 17302.
4. If the work space extends across a crosswalk, the crosswalk should be closed using the information in Index No. 660.
5. For general TCZ requirements and additional information, refer to Index No. 600.

**DURATION NOTES**

1. Signs and buffer space may be omitted if all of the following conditions are met:
  - a. Work operations are 60 minutes or less.
  - b. Speed limit is 45 mph or less.
  - c. No sight obstructions to vehicles approaching the work area for a distance equal to the buffer space and the taper length combined.
  - d. Vehicles in the work area have high-intensity, rotating, flashing, oscillating, or strobe lights operating.
  - e. Volume and complexity of the roadway has been considered.

**SYMBOLS**

- Work Area
- Channelizing Device (See Index No. 600)
- Work Zone Sign
- Advance Warning Arrow Board
- Lane Identification + Direction of Traffic

10/12/2016 1:13:23 PM