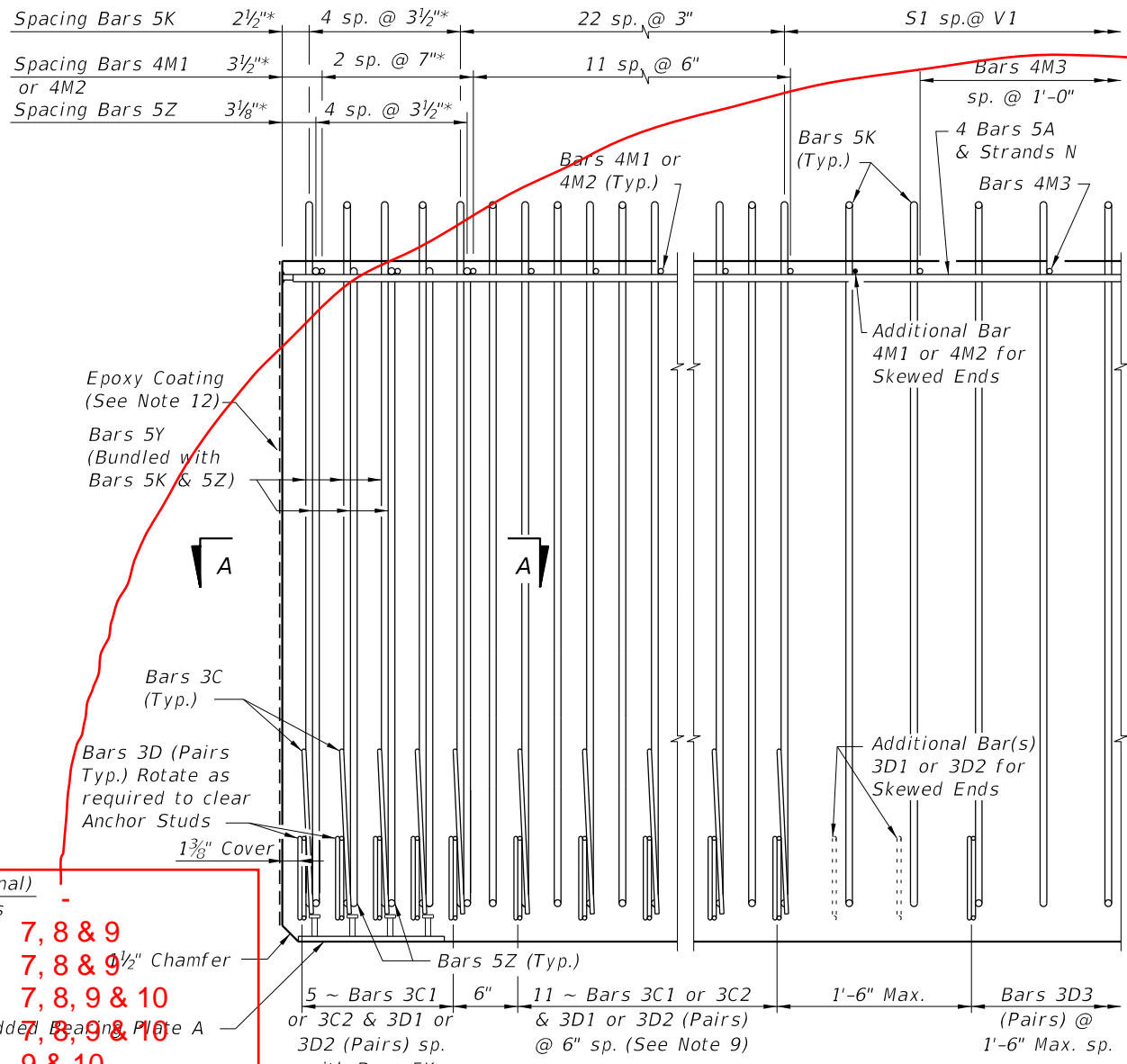
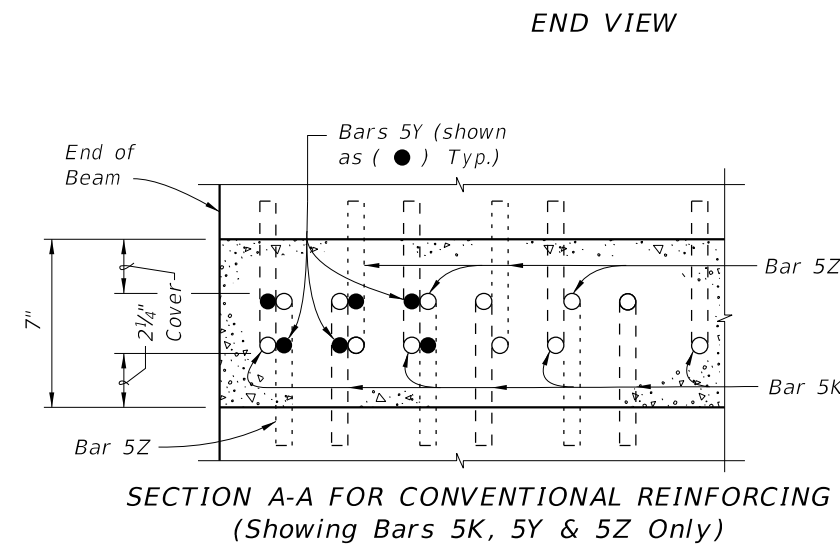
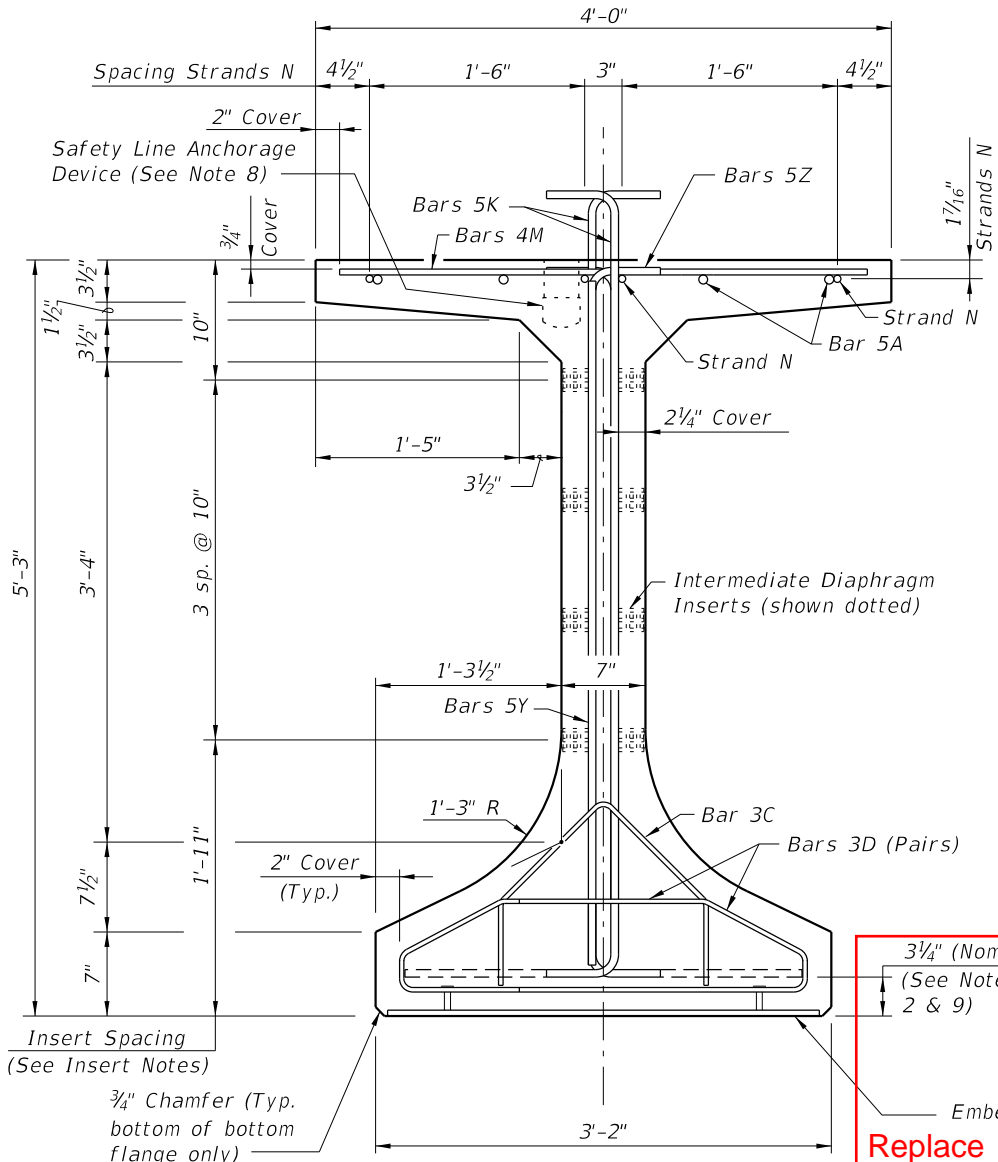


\* These dimensions are measured perpendicular to the end of beam

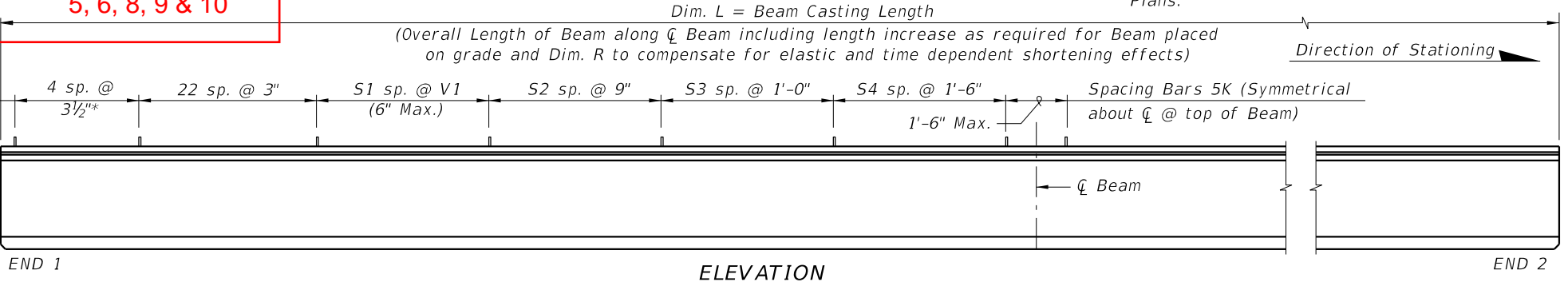
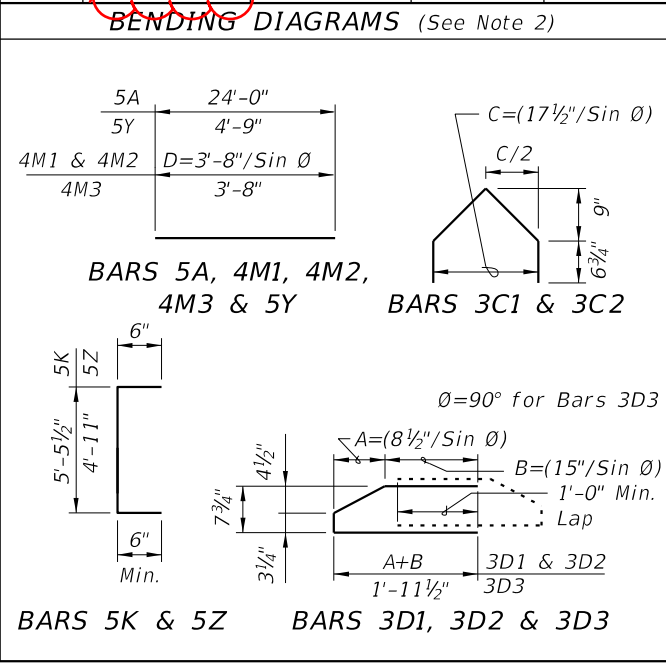


3/4" (Nominal)  
(See Notes 2 & 9)  
7, 8 & 9  
7, 8 & 9 1/2" Chamfer  
7, 8, 9 & 10  
7, 8, 9 & 10  
Replace "Note Numbers" column with:  
9  
5, 6, 8, 9 & 10  
7 & 9  
7 & 9  
9  
4 & 12  
8 & 9  
5, 6, 8, 9 & 10

**CONVENTIONAL REINFORCING BAR BENDING DETAILS**

**BILL OF REINFORCING STEEL**

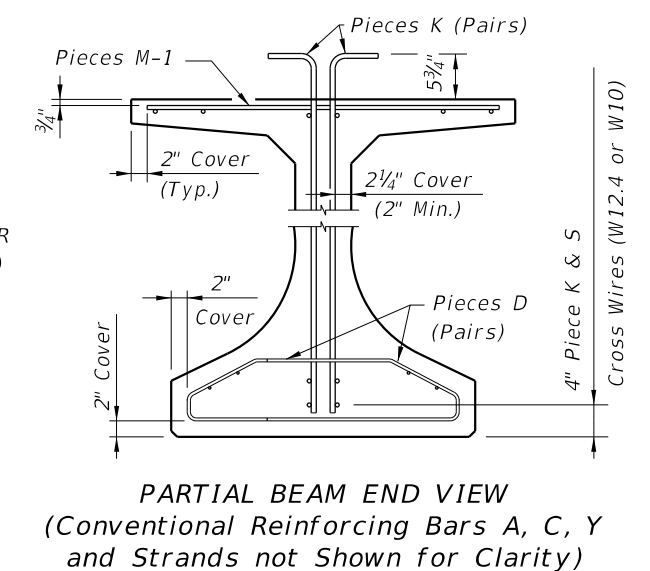
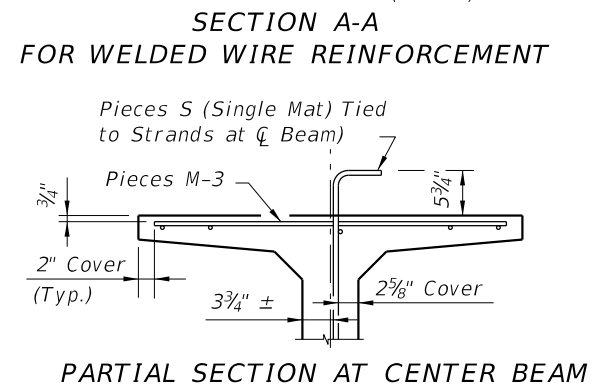
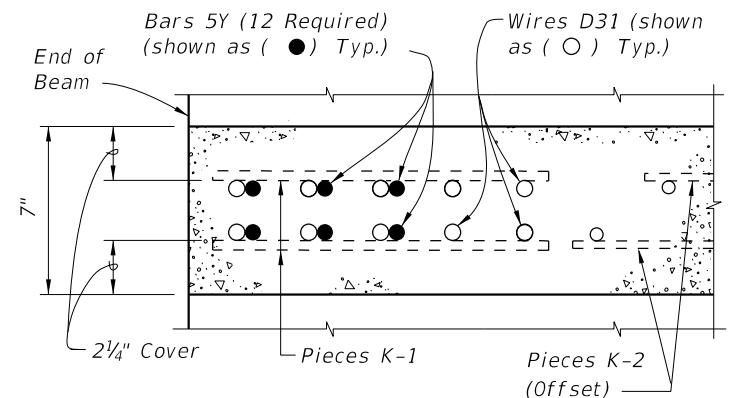
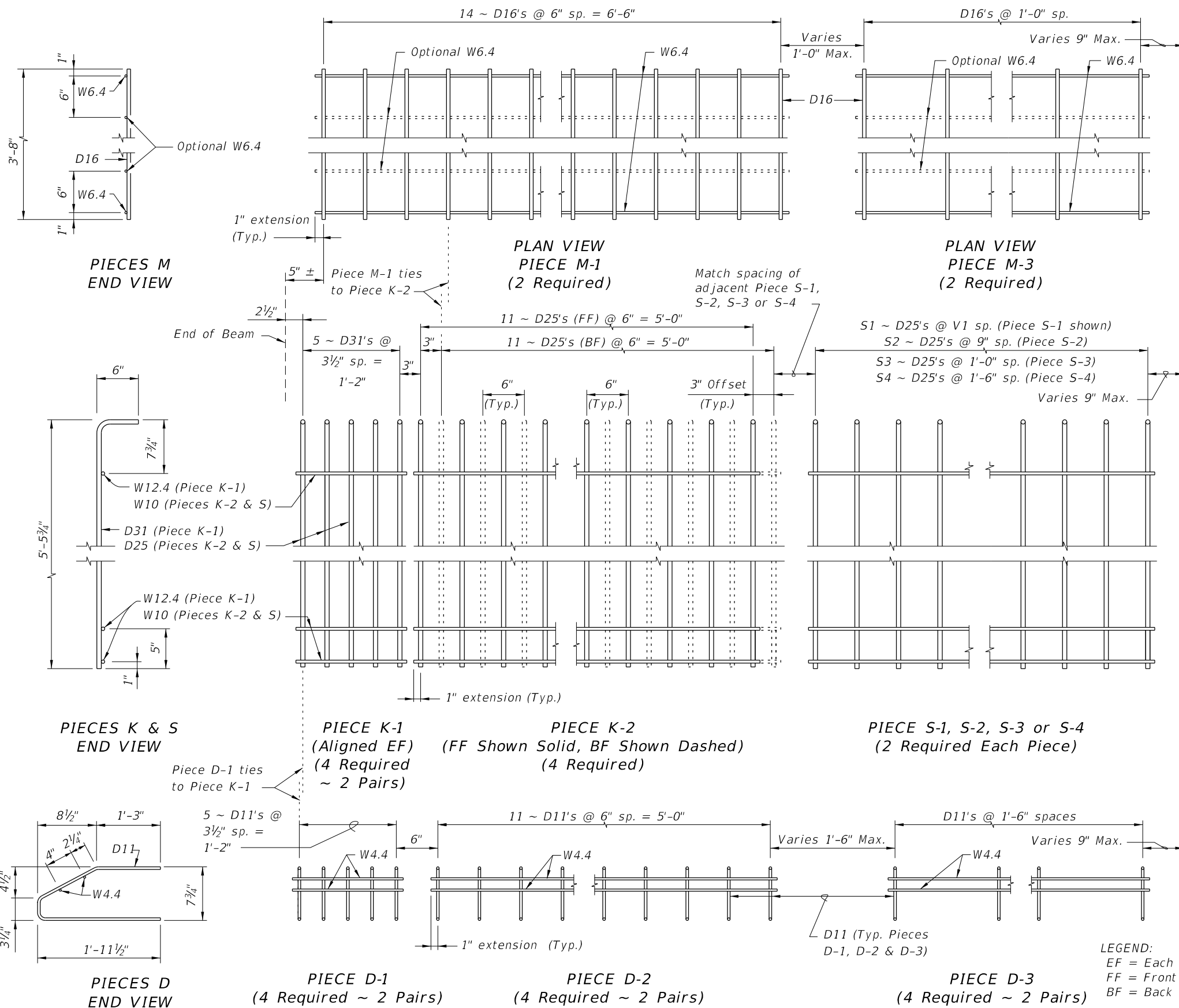
MARK	NOTE NUMBERS	SIZE	NUMBER REQUIRED	LENGTH (NOTE 2)
A	—	5	8	24'-0"
C1	9, 10 & 11	3	16 (End 1)	Varies
C2	9, 10 & 11	3	16 (End 2)	Varies
D1	9, 10, 11 & 14	3	32 (End 1)	Varies
D2	9, 10, 11 & 14	3	32 (End 2)	Varies
D3	9 & 14	3	See Table	4'-3"
K	2, 9, 11 & 13	5	See Table	6'-5"
M1	9 & 10	4	14 (End 1)	Varies
M2	9 & 10	4	14 (End 2)	Varies
M3	9	4	See Table	3'-8"
N	3 & 4	3/8" Ø Strand	4	Dim. L
Y	9 & 11	5	12	4'-9"
Z	2, 9, 11 & 13	5	10	5'-11"



10/26/2016 8:46:38 AM

LAST REVISION	DESCRIPTION:
11/01/16	

ALTERNATE REINFORCING STEEL (WWR) DETAILS



**NOTES:**  
 a. See Sheet 1 for placement details & Table of Beam Variables in Structures Plans for variables S1, S2, S3, S4 & V1.  
 b. Place Conventional Reinforcement Bars 5A & 3C as shown on Sheet 1. Place additional Bars 5Y as shown in Section A-A for WWR. Bars 5Z will not be used with the WWR Option.  
 c. Pieces may be fabricated in multiple length sections.  
 d. For beams with skewed end conditions, Pieces D-1, D-2 & M-1 shall not be used; Conventional Reinforcement Bars D1, D2, C1, C2, M1 & M2 shall be used. See Index 20010 Skewed Beam End Details and Note 9 for placement details. Shift Pieces K & Bars 5Y to accommodate skewed end conditions and align with Bars C and D.

**LEGEND:**  
 EF = Each Face  
 FF = Front Face  
 BF = Back Face

10/26/2016 8:46:40 AM

LAST REVISION 11/01/16	DESCRIPTION:	 FY 2017-18 DESIGN STANDARDS	FLORIDA-I 63 BEAM - STANDARD DETAILS	INDEX NO. 20063	SHEET NO. 2 of 2
---------------------------	--------------	------------------------------------	--------------------------------------	--------------------	---------------------