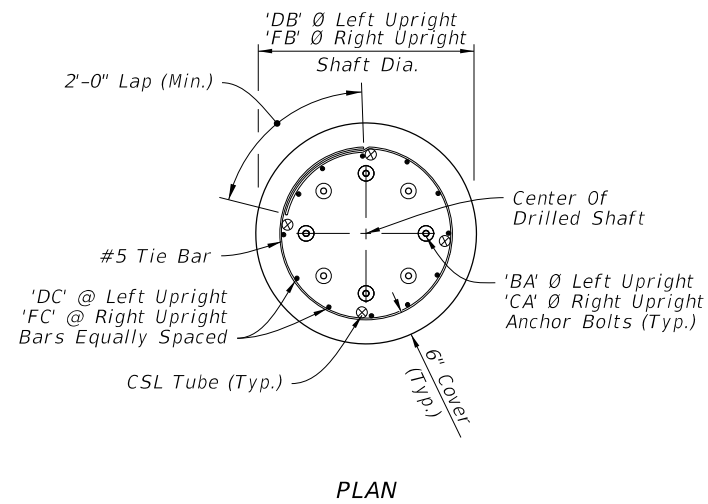
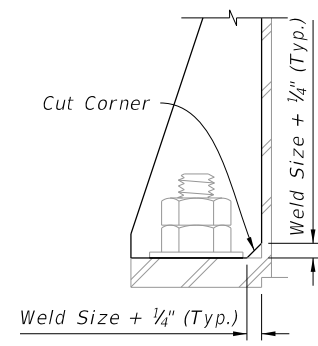


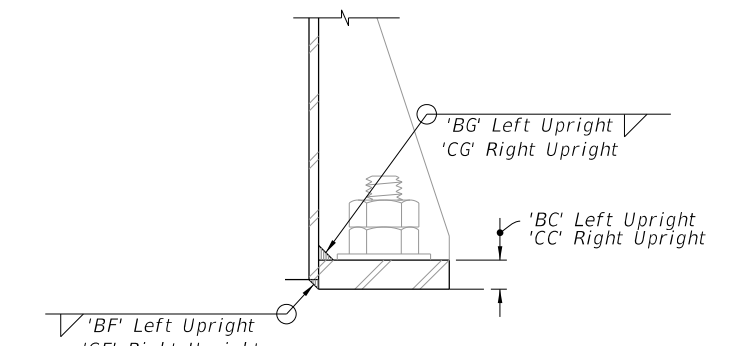
SPAN SIGN ASSEMBLY



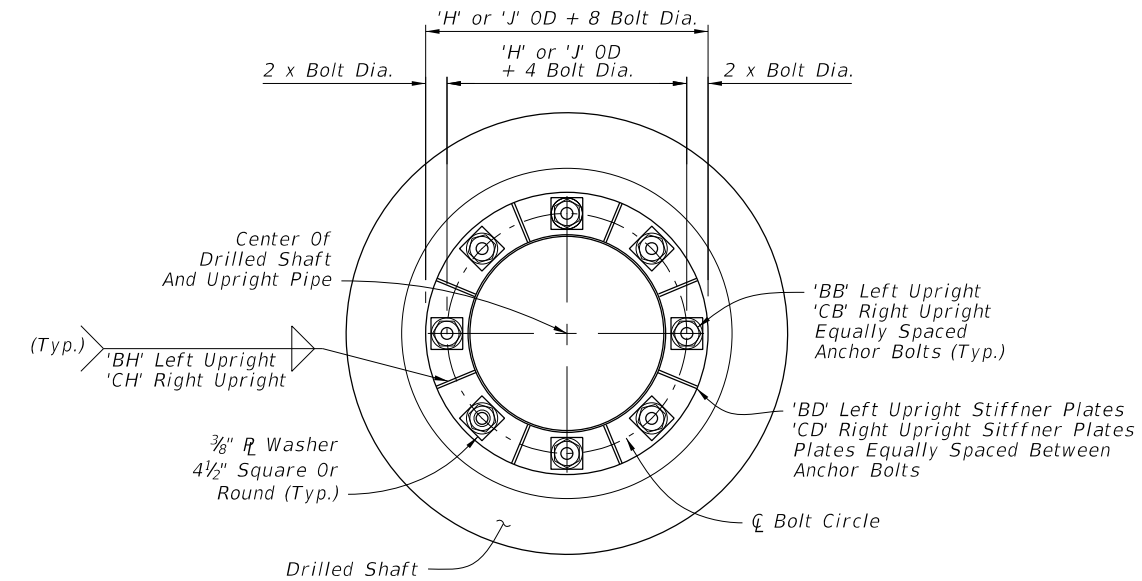
PLAN



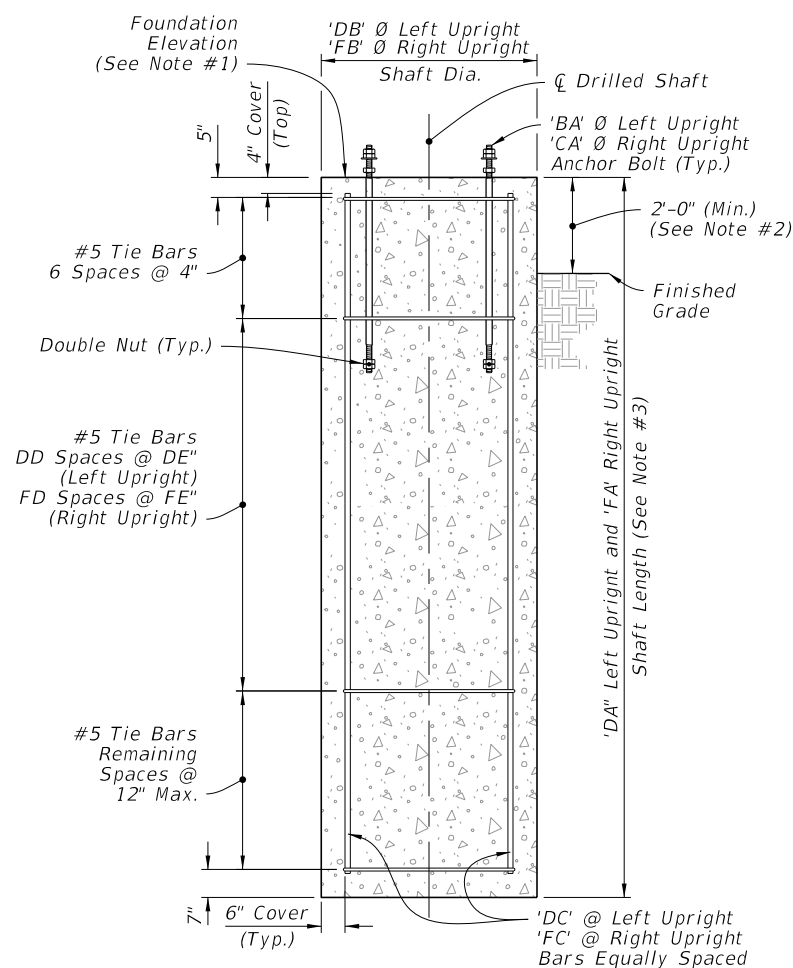
DETAIL "A"



DETAIL "B"



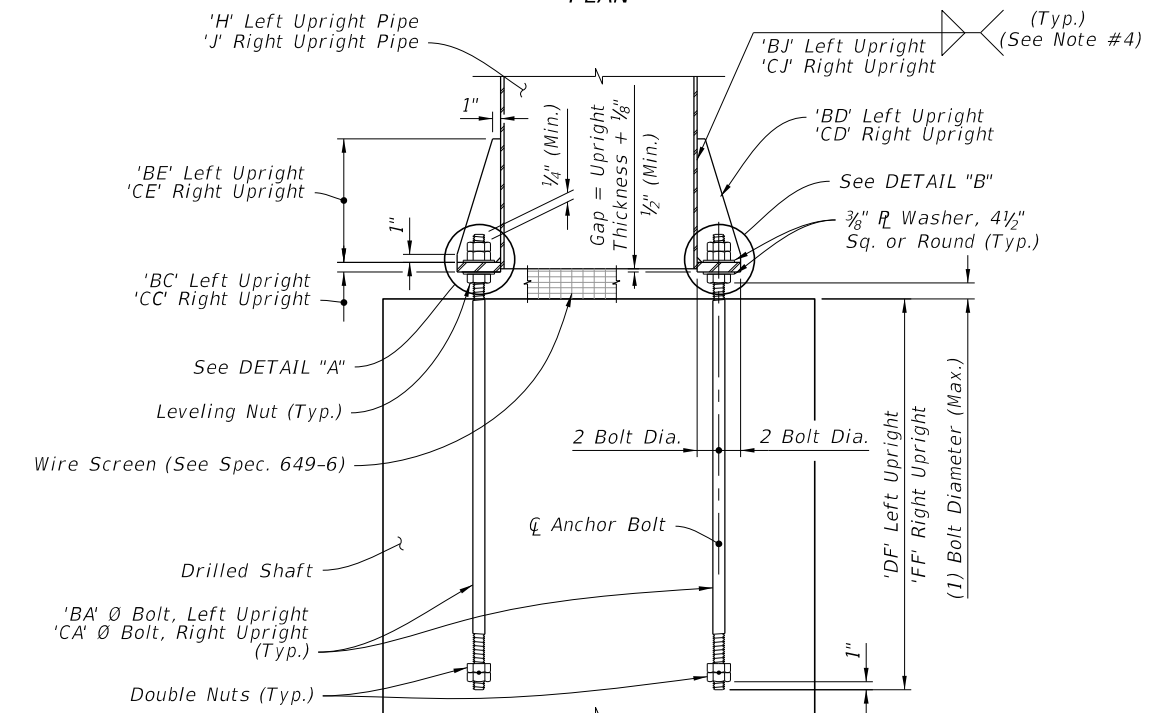
PLAN



ELEVATION

DRILLED SHAFT

FOUNDATION



ELEVATION

BASE PLATE CONNECTION

NOTES:

1. See Traffic Plans for elevation at top of Foundation.
2. Install Drilled Shaft with a 2'-0" minimum from top elevation of the drill shaft to the finished grade, unless specified otherwise in the plans.
3. The shaft length is based on 2'-0" height above finished grade.
4. Wrap fillet weld around the stiffner termination on the tube wall (Typ).

Changed To:
SPAN

~~CANTILEVER SIGN STRUCTURE~~

10/14/2016 7:56:51 AM

LAST REVISION 11/01/16	DESCRIPTION:		FY 2017-18 DESIGN STANDARDS	CANTILEVER SIGN STRUCTURE	INDEX NO. 11320	SHEET NO. 2 of 5