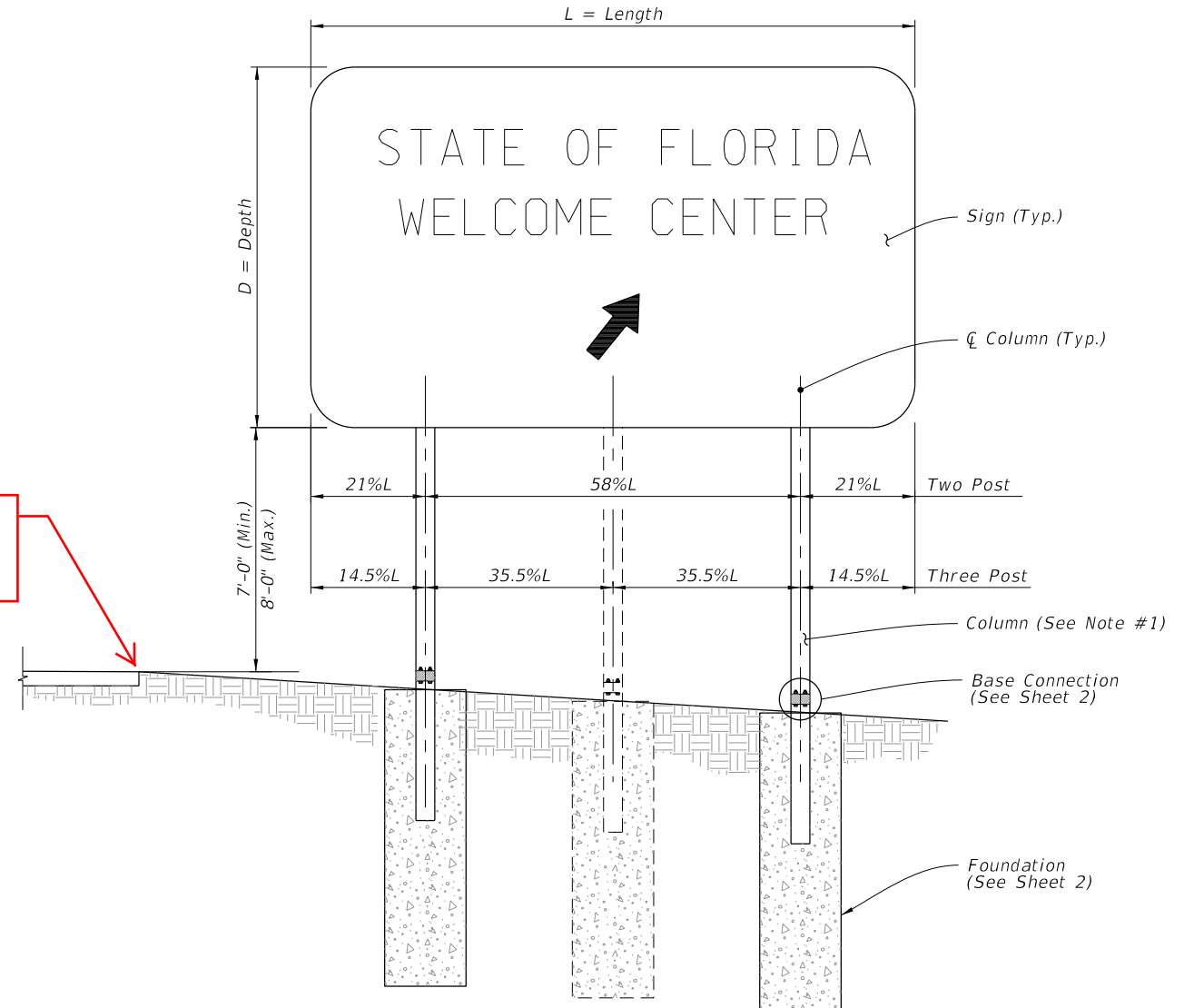


GENERAL NOTES:

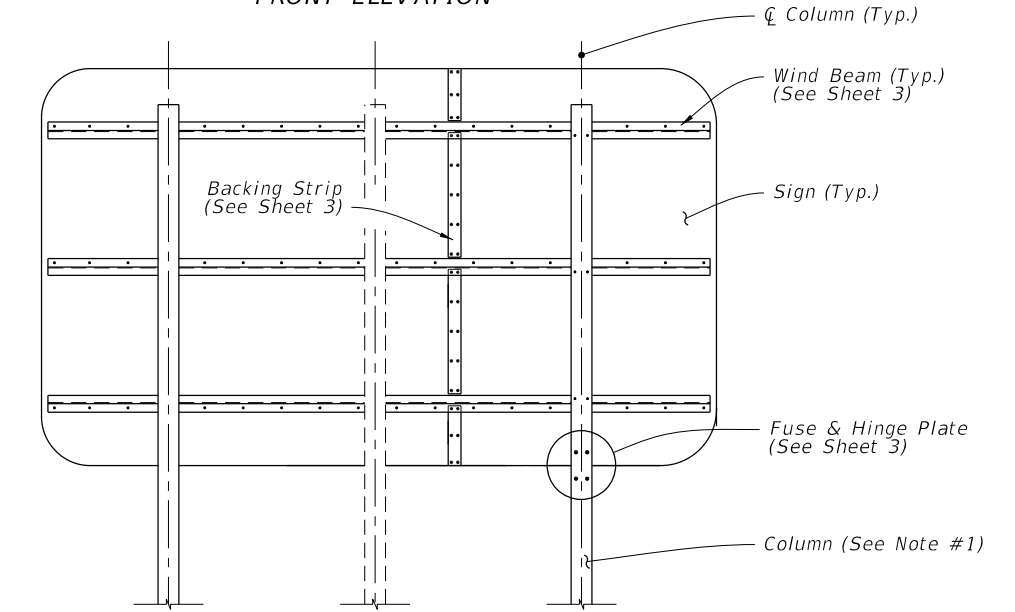
1. Verify Column lengths in the field prior to fabrication.
2. Shop drawings:
 - A. Column/Sign Posts: Sign Support Shop drawings are not required when fabricated in accordance with this Index and support posts do not exceed the length shown in the plans by more than 2'-0".
 - B. Sign Panels: Horizontal panel splices are allowed at interior wind beams for sign panels with a depth ("D") greater than 10 feet. Shop drawings required for panel splice details.
 - C. When shop drawings are required; obtain approval prior to fabrication.
3. Materials:
 - A. Sign Panel Mounting Materials:
 - a. Aluminum Bars, and Extruded Shapes: ASTM B221, Alloy 6061-T6 or Alloy 6351-T5
 - b. Aluminum Structural Shapes: ASTM B308, Alloy 6061-T6
 - B. Sign Support Structure Materials:
 - a. Steel Plates and Structural Shapes: ASTM A36 or ASTM A709, Grade 36
 - b. Steel Weld Metal: E70XX
 - c. Brass Shims: ASTM B36
 - C. Aluminum Bolts, Nuts and Washers:
 - a. Flat Head Machine Screws and Button Head Bolts: ASTM F 468, Alloy 2024-T4
 - b. Hex Nuts: ASTM F467, 2024-T4
 - c. Washers: ASTM B221, Alloy 7075-T6
 - D. Stainless Steel Bolts, Nuts and Washers Alloy Group 2, Condition A, may be substituted for the Aluminum bolts and screws as follows:
 - a. Bolts: ASTM F593, CW1 or SH1
 - b. Nuts: ASTM F594,
 - E. High Strength (H.S.) Steel Bolts, Nuts and Washers:
 - a. Galvanized Hex Head Bolts: ASTM F3125, Grade A325, Type 1
 - b. Galvanized Nuts: ASTM A563 Hex, Grade DH
 - c. Galvanized Washers: ASTM F436
 - F. Concrete: Class I.
 - G. Reinforcing Bars or Welded Wire Reinforcement (WWR): Specification Section 415
4. Coatings:
 - A. Aluminum Fasteners: Anodic coating (0.0002 inches min.) and chromate sealed
 - B. Galvanize High Strength Steel Bolts Nuts and Washers: ASTM F2329
 - C. Galvanize all other steel items (excluding stainless steel): Hot-dip ASTM A123
 - D. Treat damaged galvanizing in accordance with Specification Section 562
5. Fabrication:
 - A. All Base Connections and Stub Column materials are steel unless otherwise specified.
 - B. Drill or sub-punch and ream holes in Fuse Plates and Hinge Plates
 - C. Weld Base Plate to Post & Stub or if using the Alternate Connection Detail weld Base Plate and Stiffeners to Post and Stub (Sheet 2)
 - D. Hot dip galvanize after fabrication; Remove all drips, runs or beads on base plate within washer contact areas (Including saw cuts)
6. Construction:
 - A. Install the Sign Structure foundation in accordance with Specification Section 455. Orient Stub Post according to direction of traffic (Sheet 2)
 - B. Tighten all high strength bolts except Base Bolts in accordance with Specification Section 700.
 - C. Assemble Post to Stub with Base Bolts and three flat washers per bolt (See Base Connection Details, Sheet 2). Tighten Base Bolts in accordance with Instructions Notes on Sheet 2.

ADDED: Edge Of Travelway Elevation

Deleted



FRONT ELEVATION

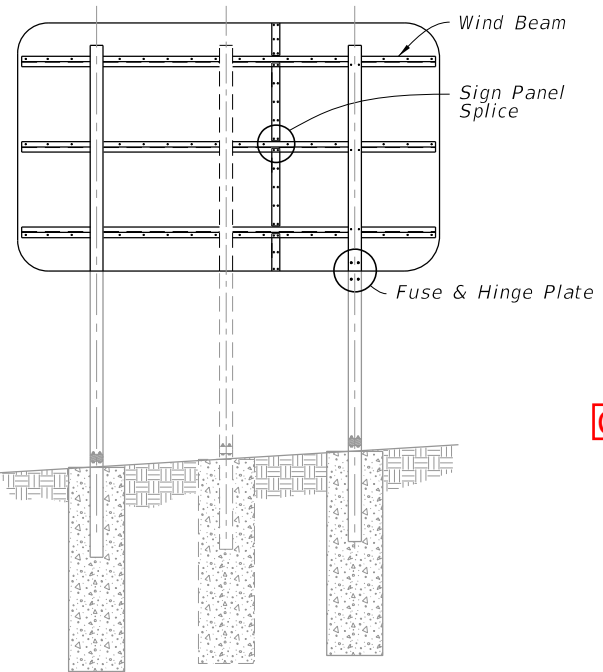


BACK ELEVATION

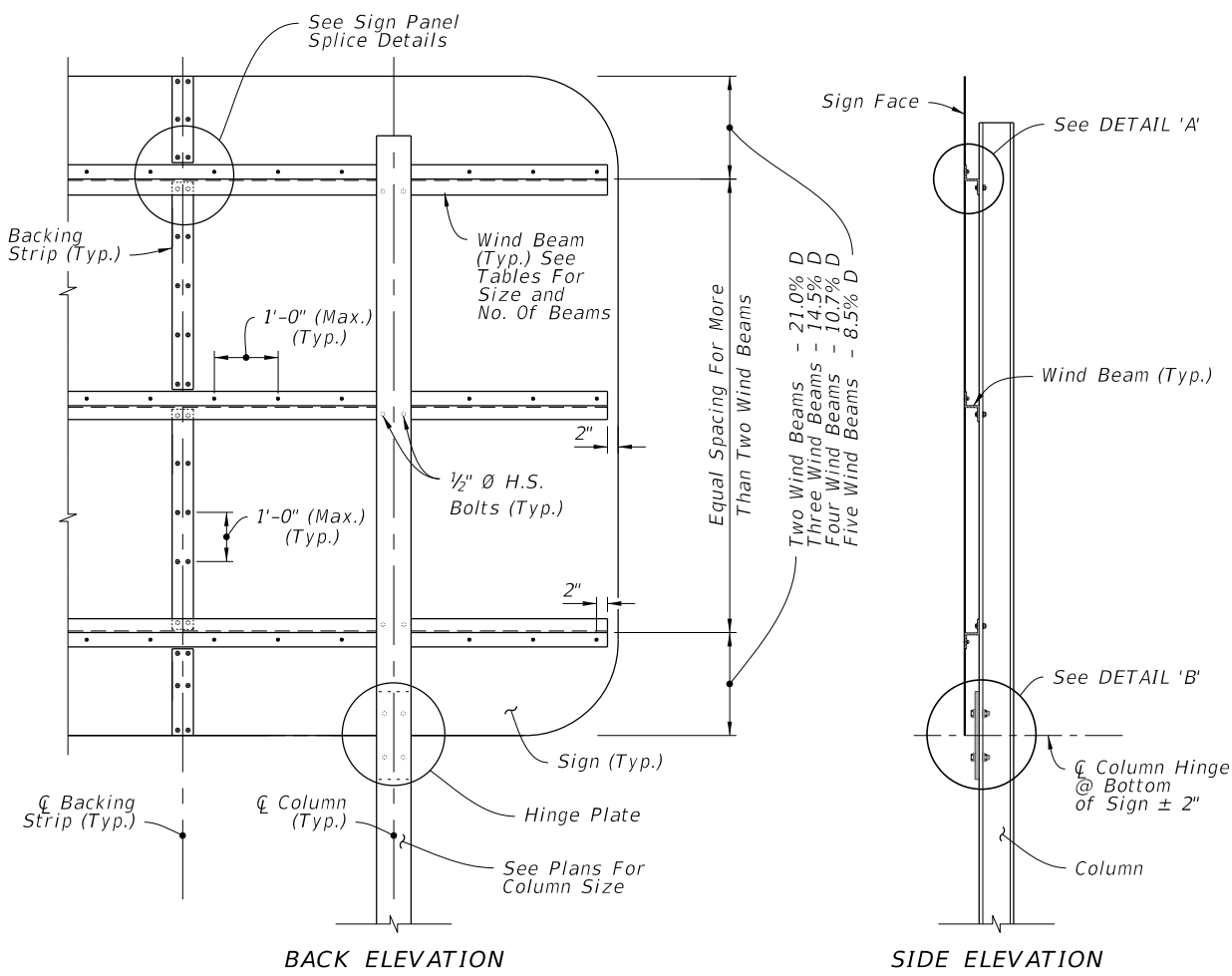
MULTI-COLUMN SIGN ASSEMBLY

10/14/2016 7:54:59 AM

LAST REVISION 11/01/16	REVISION	DESCRIPTION:	 FY 2017-18 DESIGN STANDARDS	MULTI-COLUMN GROUND SIGN	INDEX NO. 11200	SHEET NO. 1 of 3
---------------------------	----------	--------------	--	--------------------------	--------------------	---------------------



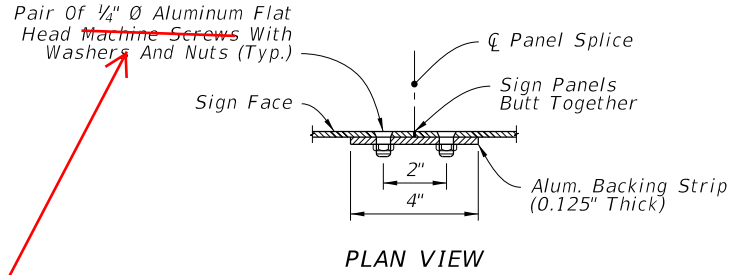
BACK ELEVATION
MULTI-COLUMN SIGN ASSEMBLY



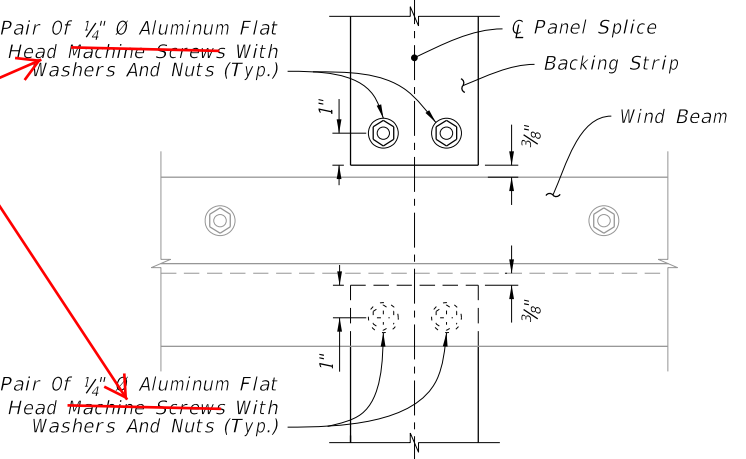
BACK ELEVATION
MULTI-COLUMN SIGN BACK PANEL

SIDE ELEVATION

CHANGED TO: Bolt



PLAN VIEW



ELEVATION

SIGN PANEL SPLICE

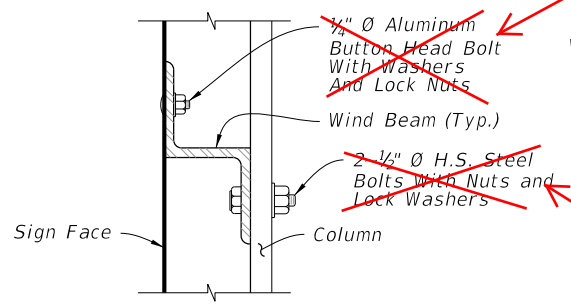
NUMBER OF WIND BEAMS FOR GIVEN DEPTH

No. Beams	Max. Depth
2	7'-0"
3	12'-0"
4	16'-4"
5	20'-8"

SIZE OF WIND BEAMS

Size of Zee**	Length Of Sign (Feet)	
	2 Posts	3 Posts
Zee 1 3/4" x 1 3/4" x 1.09	0 to 11'-0"	0 to 17'-4"
Zee 3 x 2 1/16" x 2.33	11'-1" to 19'-0"	17'-5" to 29'-6"
Zee 3 x 2 1/16" x 3.38	19'-1" to 31'-0"	29'-7" to 40'-0"

** Zee Beams are aluminum. No steel equivalent available. Designation gives (Member Depth) x (Flange Width) x (lb/ft)

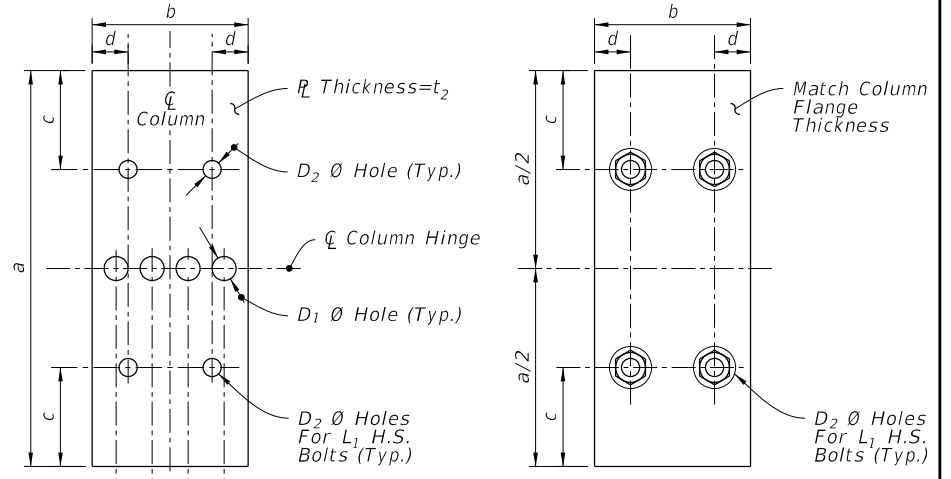


DETAIL 'A'

FUSE (HINGE) PLATE DATA

Section*	a	b	c	d	e	t ₂	D ₁	D ₂	L ₁
S 3x5.7	7-1/4"	2-3/8"	1-1/4"	1/2"	9/16"	3/8"	7/16"	9/16"	1/2"
W 6x12	7-1/4"	4"	1-1/4"	7/8"	15/16"	3/8"	13/16"	11/16"	5/8"
W 8x18	8-1/4"	5-1/4"	1-3/8"	1-1/8"	1-1/4"	3/8"	1"	13/16"	3/4"
W 8x24	8-1/4"	6-1/2"	1-3/8"	1-1/2"	1-1/2"	1/2"	1"	13/16"	3/4"
W 10x33	9-1/4"	8"	2"	1-3/4"	1-3/4"	5/8"	1-1/8"	1-1/16"	1"
W 12x45	11"	8"	2"	1-3/4"	1-3/4"	3/4"	1-5/16"	1-1/16"	1"

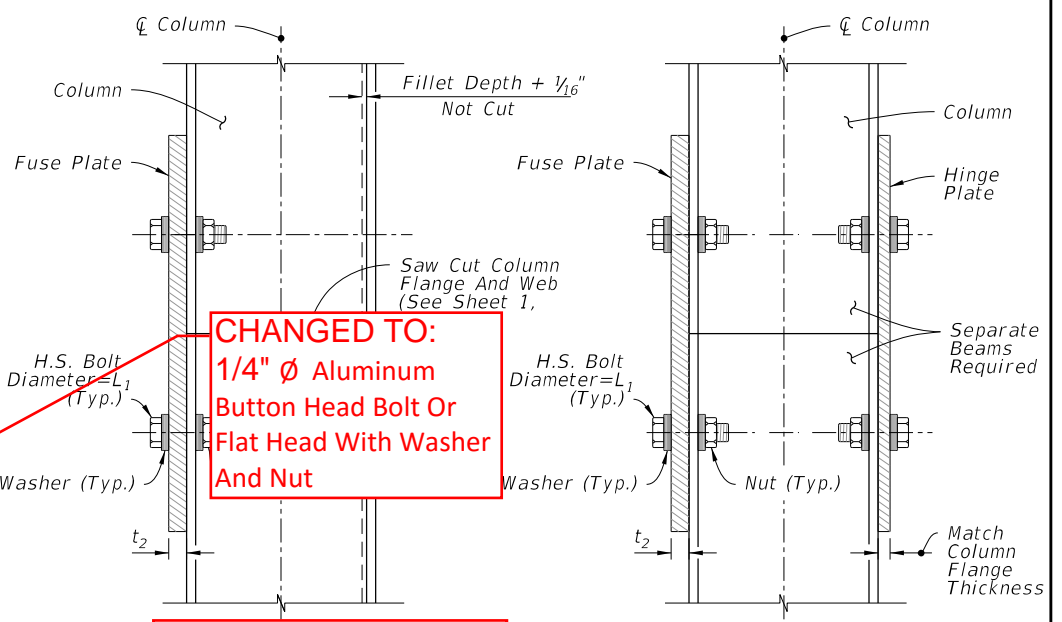
* Designations: Normal Depth in inches.



FUSE PLATE

HINGE PLATE

FUSE & HINGE PLATE



SIDE ELEVATION
OPTIONAL HINGE

CHANGED TO:
1/4" Ø Aluminum Button Head Bolt Or Flat Head With Washer And Nut

CHANGED TO: 2-1/2" Ø H.S. Steel Bolt With Washer And Nut

Notes on Sheet 1)

WIND BEAM, BACKING STRIP & FUSE/HINGE PLATE DETAILS

10/14/2016 7:55:05 AM

LAST REVISION	DESCRIPTION:
11/01/16	