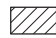




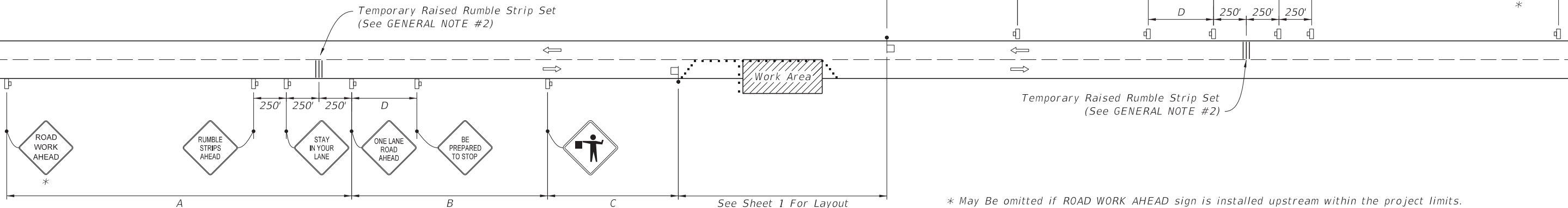


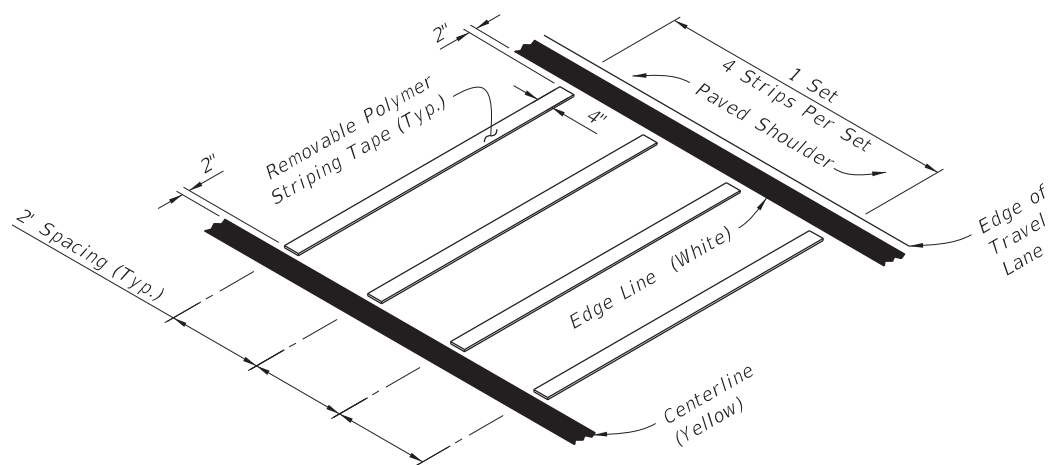
SYMBOLS:

-  Work Area
-  Channelizing Device (See Index No. 600)
-  Work Zone Sign
-  Flagger
-  Lane Identification + Direction of Traffic



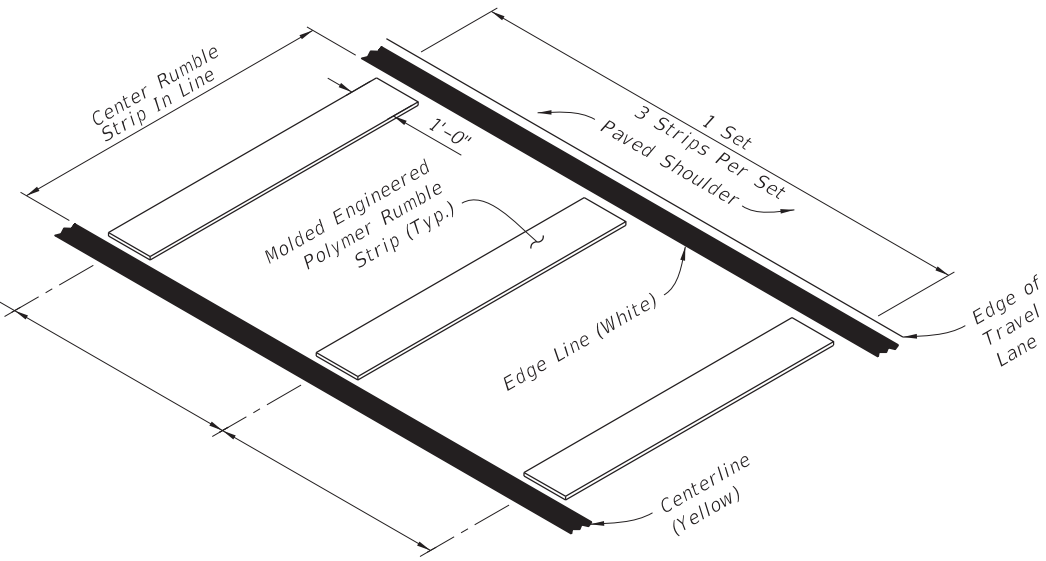
WITH TEMPORARY RAISED RUMBLE STRIPS
(When Required See GENERAL NOTE #2)

CHANGED TO: 20'



REMOVABLE POLYMER STRIPING TAPE

RUMBLE STRIP SET
OPTION - 1



MOLDED ENGINEERED POLYMER SET

RUMBLE STRIP SET
OPTION - 2

TEMPORARY RAISED RUMBLE STRIPS

LAST REVISION 02/04/16	REVISION	DESCRIPTION:	 FY 2017-18 DESIGN STANDARDS	TWO-LANE, TWO-WAY, WORK WITHIN THE TRAVEL WAY	INDEX NO. 603	SHEET NO. 2 of 3
---------------------------	----------	--------------	--	--	------------------	---------------------

10/12/2016 1:07:19 PM