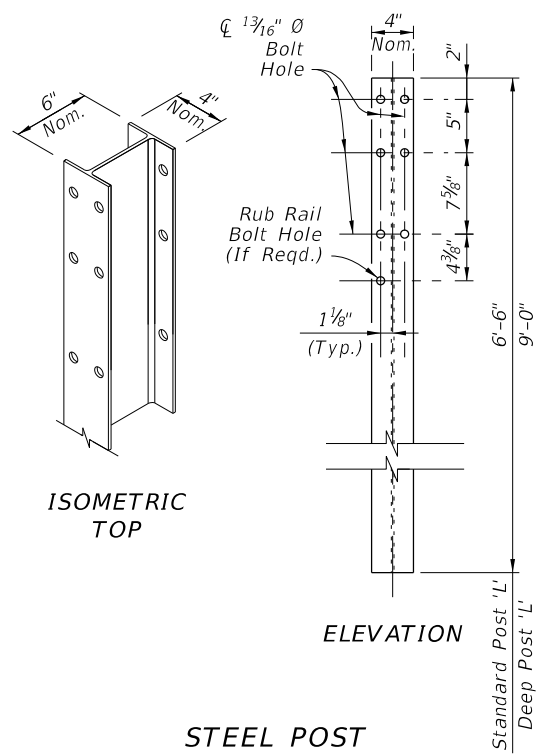
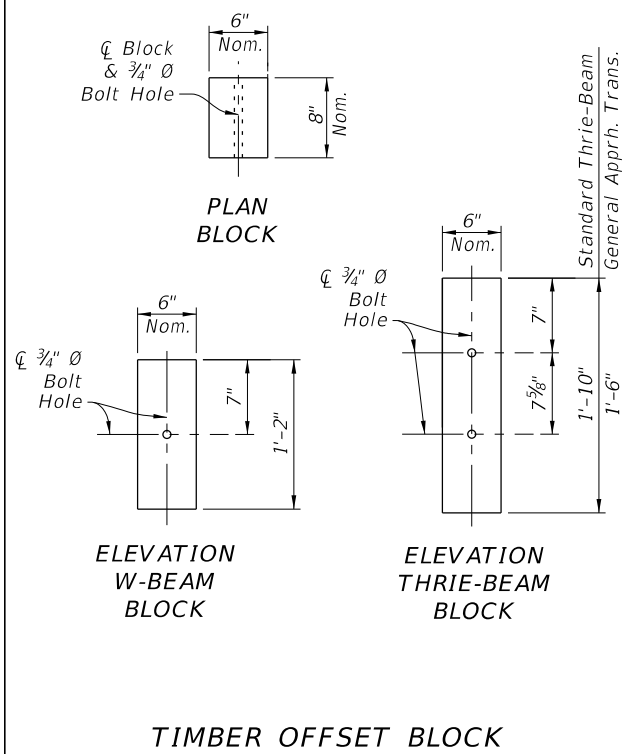


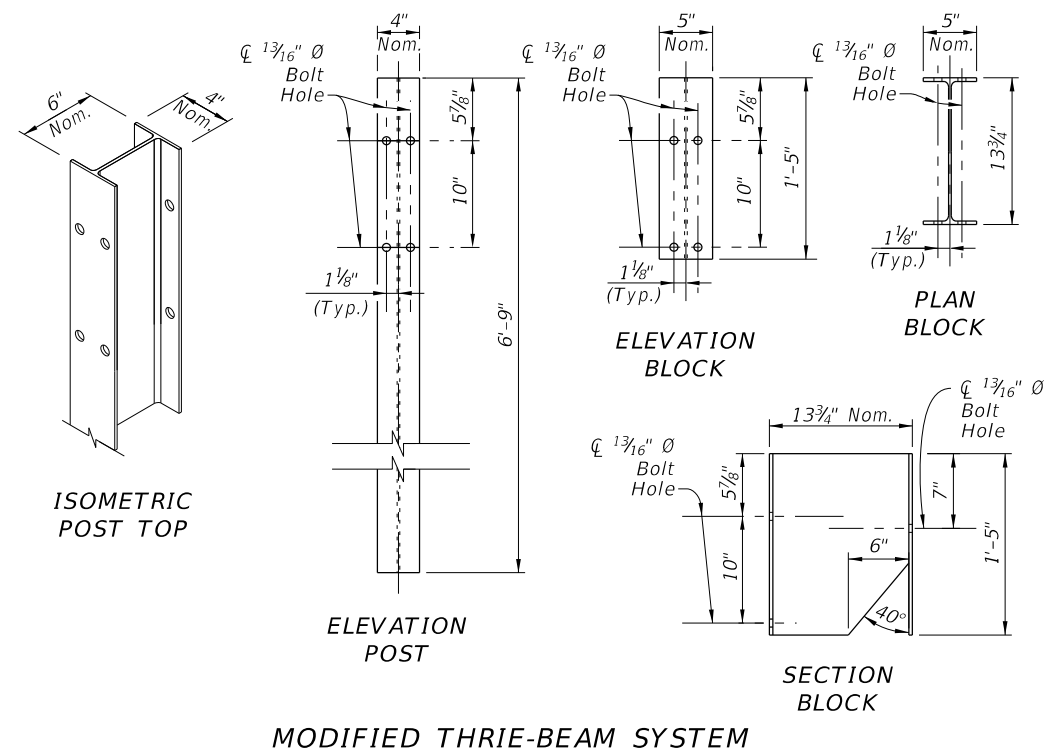
TIMBER POST
(6"X8" Nominal)



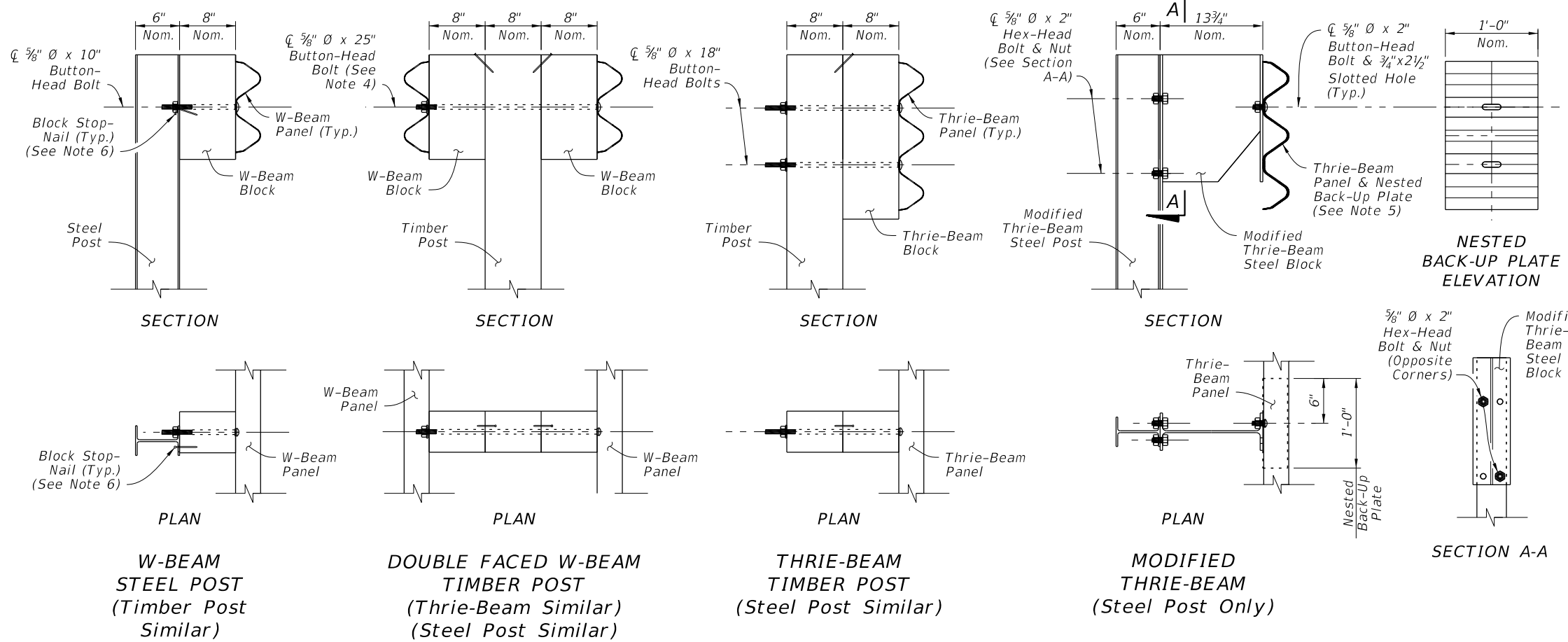
STEEL POST
(W6X8.5 or W6X9)



TIMBER OFFSET BLOCK
(6"X8" Nominal)



MODIFIED THRIE-BEAM SYSTEM
(W6X8.5 or W6X9 Steel Post & W14X22 Steel Block)



NOTES:

1. GENERAL: Install Posts and Offset Blocks where indicated throughout this Index.
2. OFFSET BLOCKS: For each Panel type, install the corresponding Offset Block type. For General, TL-3 (Single Faced) Approach Transitions only, use the 1'-6" Thrie-Beam Block (See Sheet 13).
3. STANDARD POSTS: Where Standard Posts are called for in this Index, use either a Timber Post or Steel Post at the Length, 'L', shown for Standard Posts. Use a single post material type consistently per each run of guardrail. Only where specified in the Plans, use the Deep Post 'L' for Slope Break Conditions as shown on Sheet 6.
4. DOUBLE FACED GUARDRAIL: Orient Post Bolts with the Button-Head located on the side nearest the traffic lane. The bolt's threaded portion is not permitted to extend beyond 3/4" from the face of the tightened nut; trim the threaded portion as needed and galvanize in accordance with Specification Section 562.
5. MODIFIED THRIE-BEAM NESTED BACK-UP PLATE: At each post connection, install a Nested Back-up Plate between the Thrie-Beam Panel and the post. The Nested Back-up Plate has a cross-section and material matching the Thrie-Beam Panel Section.
6. BLOCK STOP-NAIL: Drive one nail per Standard Offset Block as shown to prevent Block rotation. Use steel 3 1/2" Type 16d nails with ASTM A153 hot-dip galvanization. For steel posts, drive the nail through the unused flange bolt hole and bend the nail so its head contacts the flange.
7. MATERIALS: Use timber and steel posts and offset blocks in accordance with Specification Section 967. Composite offset blocks may be substituted as approved on the APL. Use a single offset block type consistently per each run of guardrail. Steel offset blocks are only permitted for Modified Thrie Beam.

POST AND OFFSET BLOCK DETAILS

6/2/2017 9:08:28 AM

LAST REVISION 02/01/16	REVISION	DESCRIPTION:	<p>FY 2017-18 DESIGN STANDARDS</p>	<p>GUARDRAIL</p>	<p>INDEX NO. 400</p>	<p>SHEET NO. 5 of 22</p>
---------------------------	----------	--------------	--	------------------	--------------------------	------------------------------