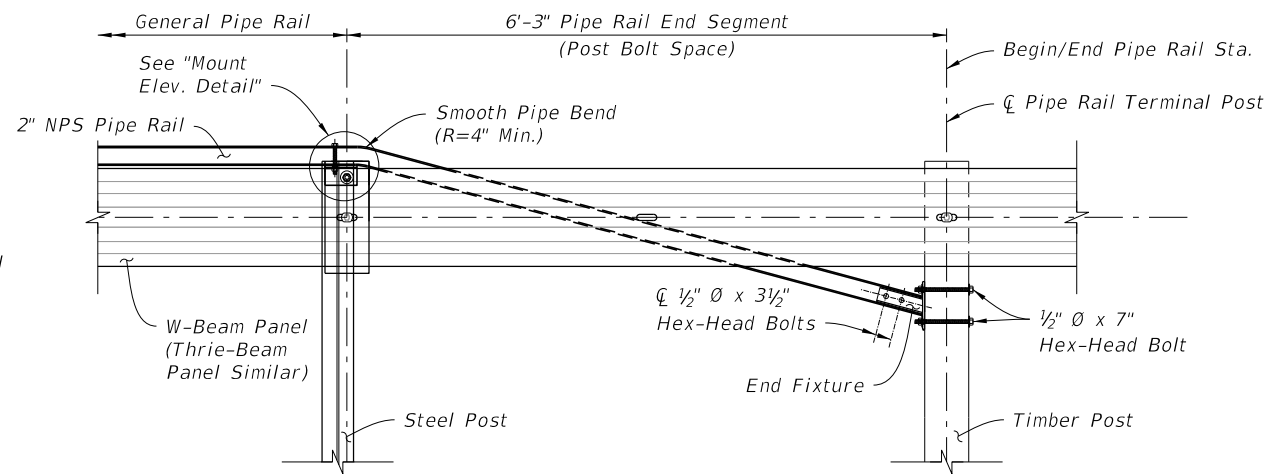
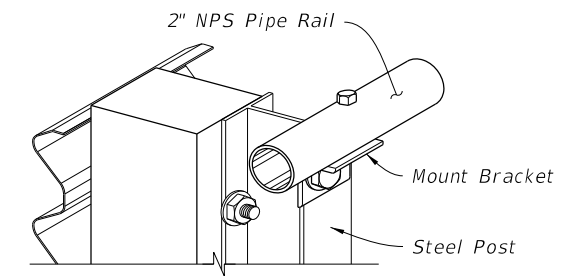


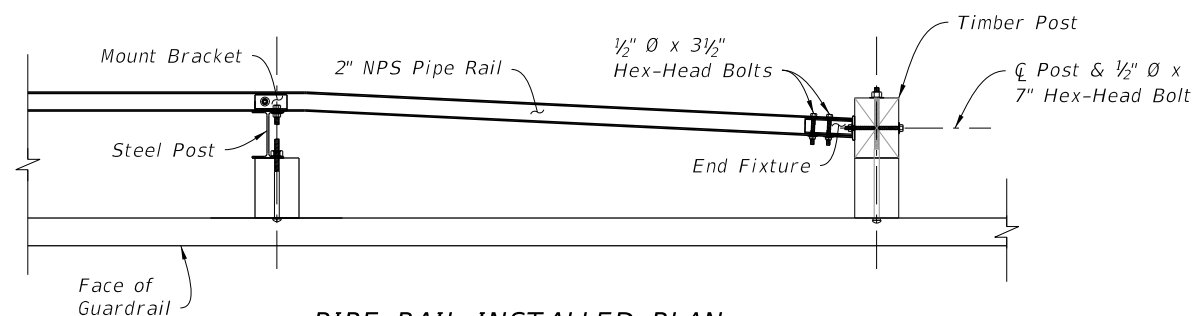
GENERAL PIPE RAIL SECTION



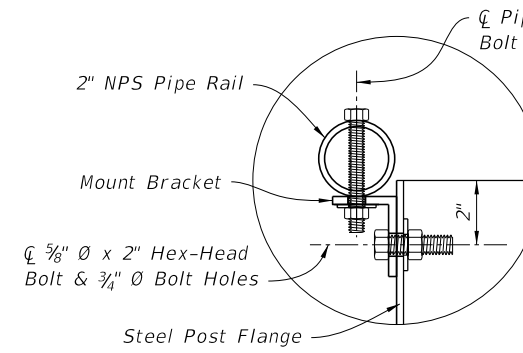
PIPE RAIL INSTALLED ELEVATION (End Segment Shown)



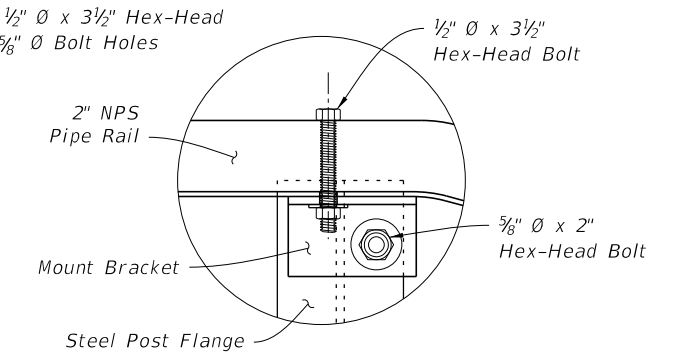
MOUNT ISOMETRIC CUT-AWAY



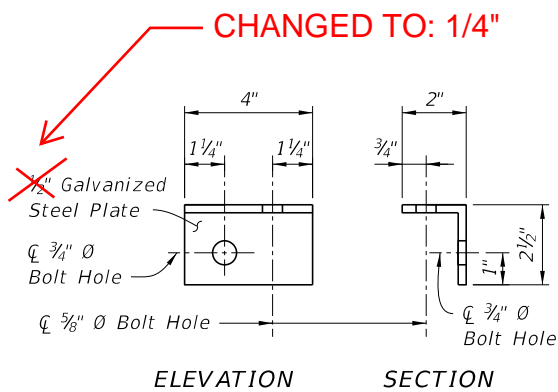
PIPE RAIL INSTALLED PLAN (End Segment Shown)



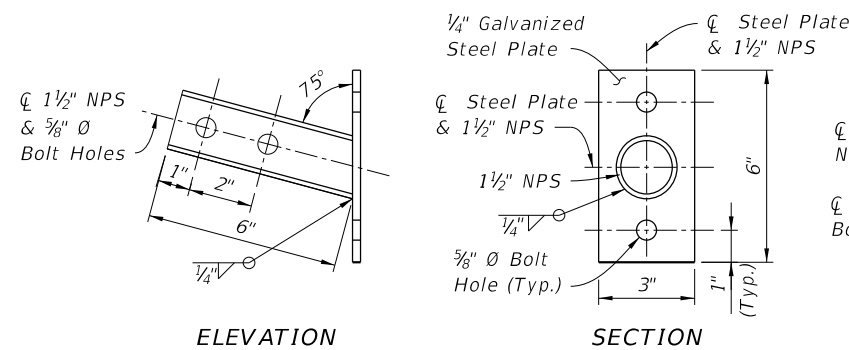
MOUNT SECTION DETAIL



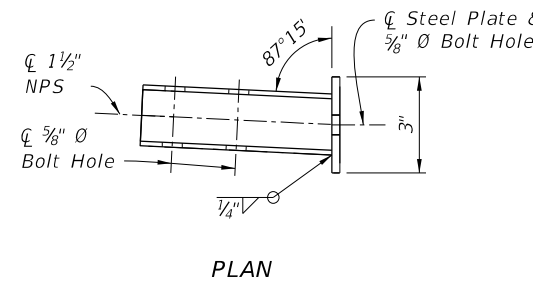
MOUNT ELEVATION DETAIL (Back View - Mirrored)



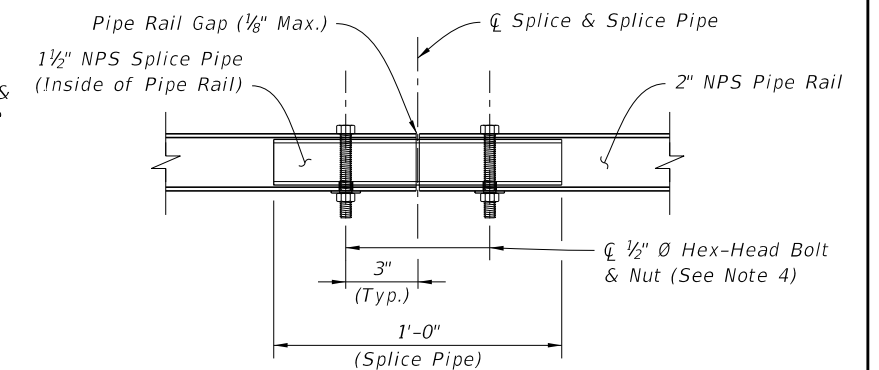
MOUNT BRACKET DETAIL



END FIXTURE DETAIL



PLAN




RAIL SPLICE DETAIL

NOTES:

1. GENERAL: Install General Pipe Rail where indicated in the plans or when existing sidewalks or shared use paths are located less than 4'-0" from the back of Steel Posts as shown on Sheet 6.
2. PIPE RAIL END SEGMENTS: Place End Segments on both ends of General Pipe Rail runs, with End Fixtures mounted to Timber Posts located outside of Approach Terminal Assembly ('LE'), Trailing Anchorage Assembly ('LT'), and Approach Transition ('LA') segments.
3. MATERIALS: Use steel brackets, fixtures, and pipes in accordance with Specification Section 967.
4. RAIL SPLICES: Install Rail Splices to join pieces of 2" NPS Pipe Rail into a continuous system. Place splices as needed, at a spacing of 18'-0" or greater. Orient the head of bolt on the top of the pipe.

PEDESTRIAN SAFETY TREATMENT - PIPE RAIL

10/26/2016 6:35:19 AM

LAST REVISION 11/01/16	DESCRIPTION:	 <b>FY 2017-18 DESIGN STANDARDS</b>	<b>GUARDRAIL</b>	INDEX NO. <b>400</b>	SHEET NO. <b>20 of 22</b>
---------------------------	--------------	---	------------------	-------------------------	------------------------------