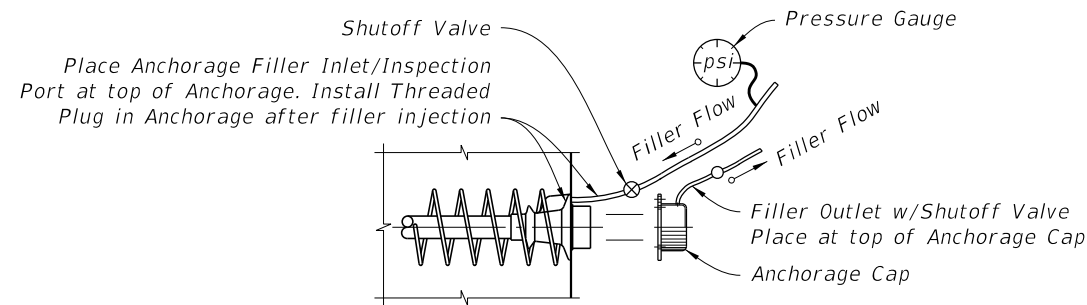
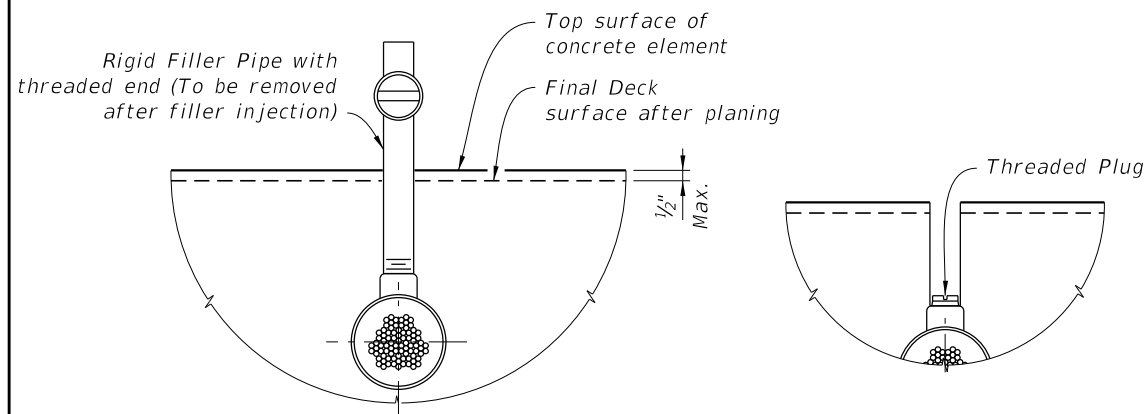


FACE INSPECTED ANCHORAGE WITH FILLER OUTLET

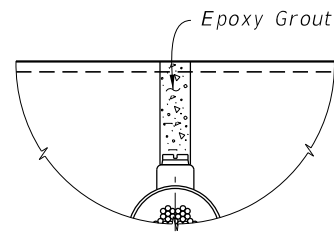


FACE INSPECTED ANCHORAGE WITH FILLER INLET



1 FILLER OUTLET CONNECTION TO DUCT

2 POCKET PREPARATION

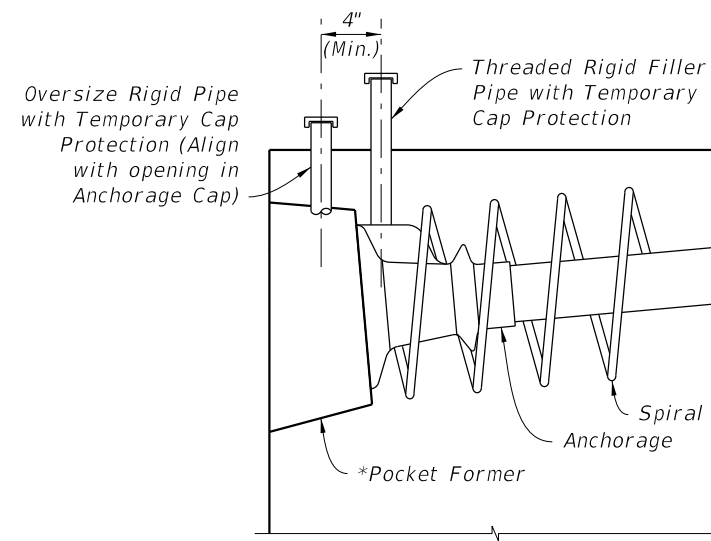


3 FILLING POCKET

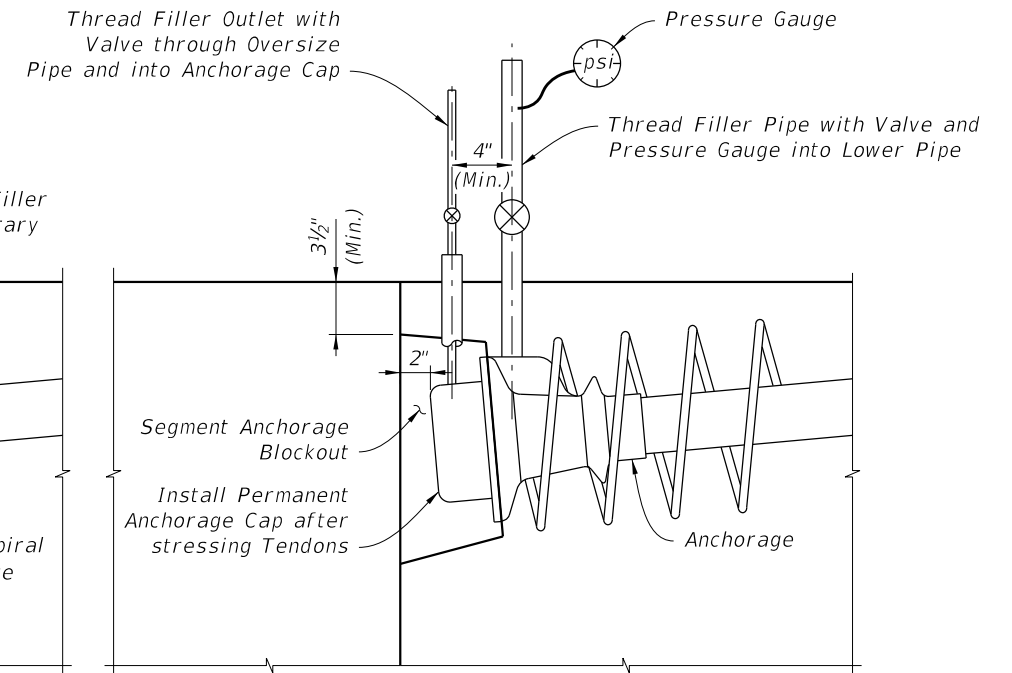
PROCEDURE:

1. Remove Rigid Filler Pipe.
2. Inspect Tendon for voids as necessary.
3. Vacuum inject as required. If grout is used, allow grout to cure. If flexible filler is used, replace filler displaced by inspection. Remove pipe used for vacuum injecting.
4. Clean threads and rethread as required.
5. Install Threaded Plug into Outlet to form a tight fit.
6. Over-ream hole ($\frac{1}{4}$ " \varnothing over-ream). Clean and roughen sides.
7. Fill Pocket with Epoxy Grout.

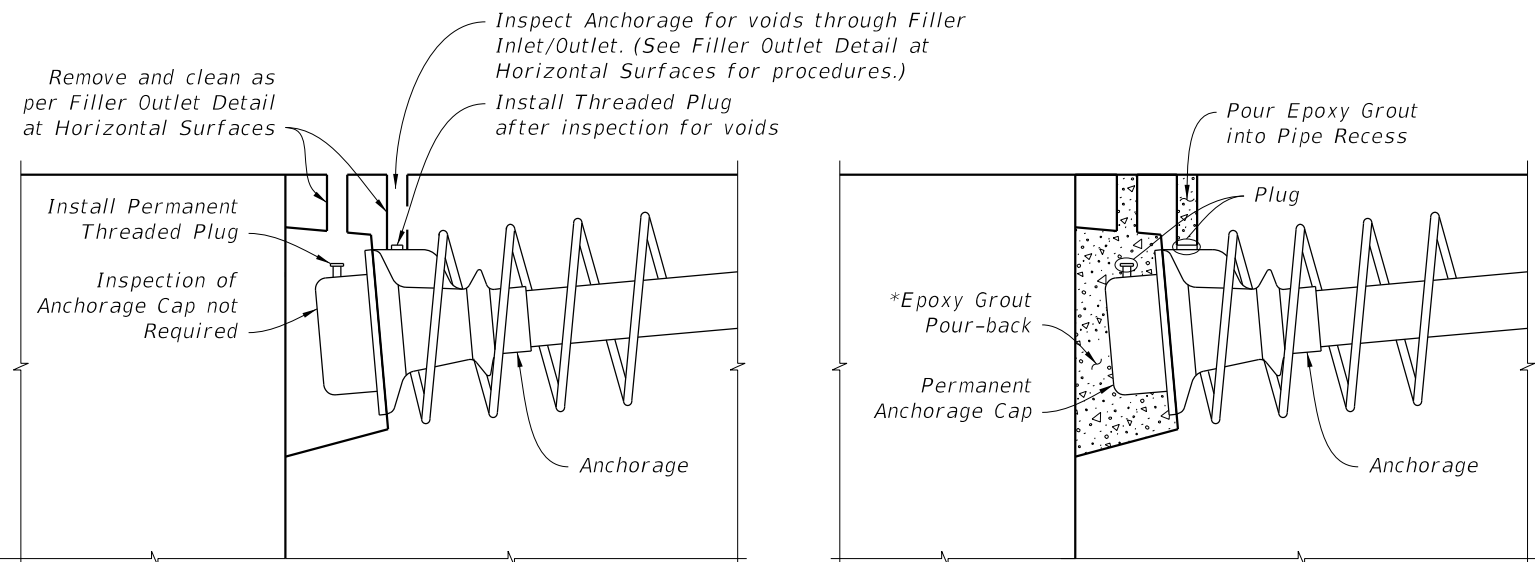
== FILLER OUTLET DETAIL AT HORIZONTAL SURFACES ==



1 INSTALLATION & SHIPPING



2 FILLER INJECTION



3 INSPECTION

4 PROTECTION

TOP INSPECTED ANCHORAGE WITH FILLER INLET INSTALLATION, FILLER INJECTION, INSPECTION & PROTECTION

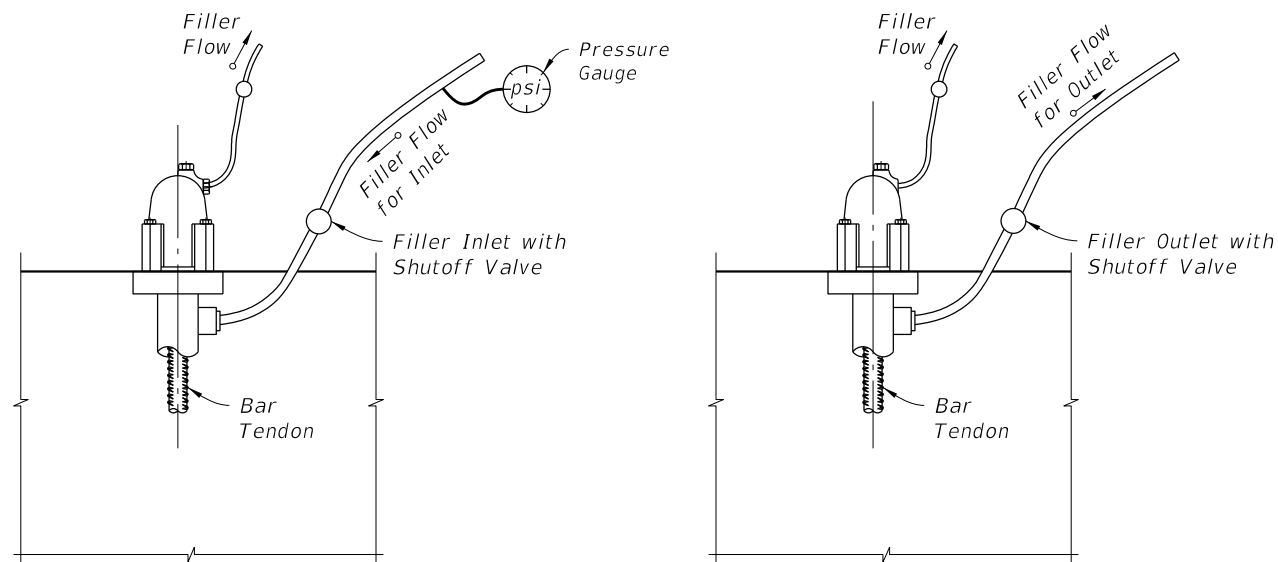
NOTES:

1. Holes used for the Inspection and Filler Inlets/Outlets may be formed using tapered pipes or mandrels.

- * Round Pocket Former - Gravity fed placement of epoxy grout acceptable
- Modified Square Pocket Former - Gravity fed placement of epoxy grout acceptable
- Square Pocket Former - Vacuum epoxy grouting required

7/22/2016 10:19:56 AM

| | |
|--------------------------|--|
| LAST REVISION 7/22/16 | DESCRIPTION: Minor editorial revisions. |
|--------------------------|--|

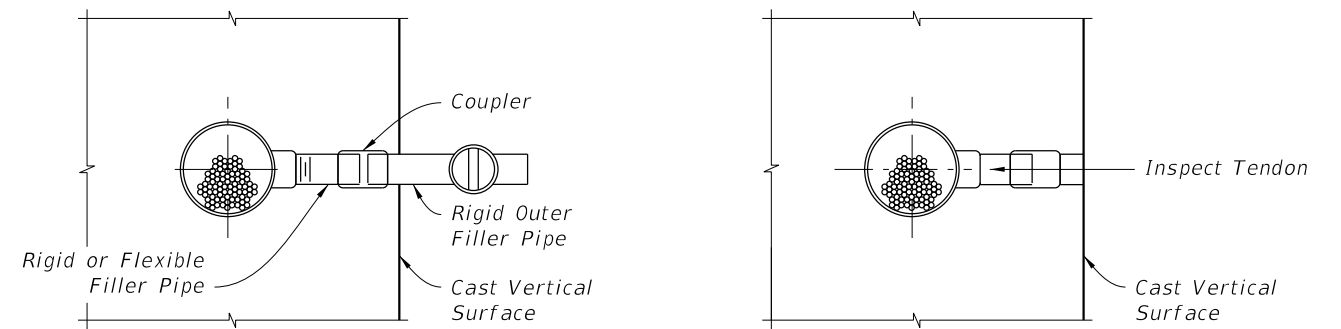


INLET END

OUTLET END

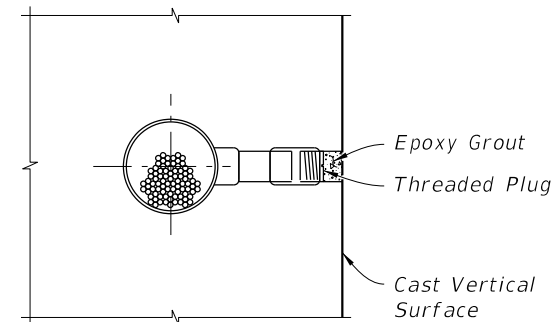
FILLER INLET AND OUTLET DETAILS FOR BAR TENDONS

NOTE:
Anchor or Nut to allow for flow of Filler into Cap.



1 FILLER OUTLET CONNECTION TO TENDON

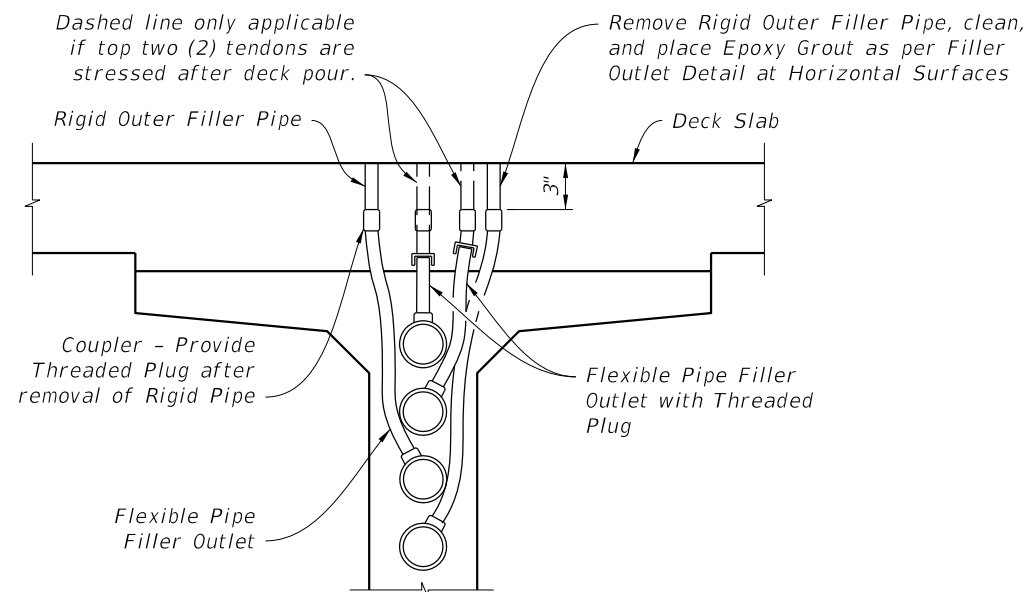
2 POCKET PREPARATION



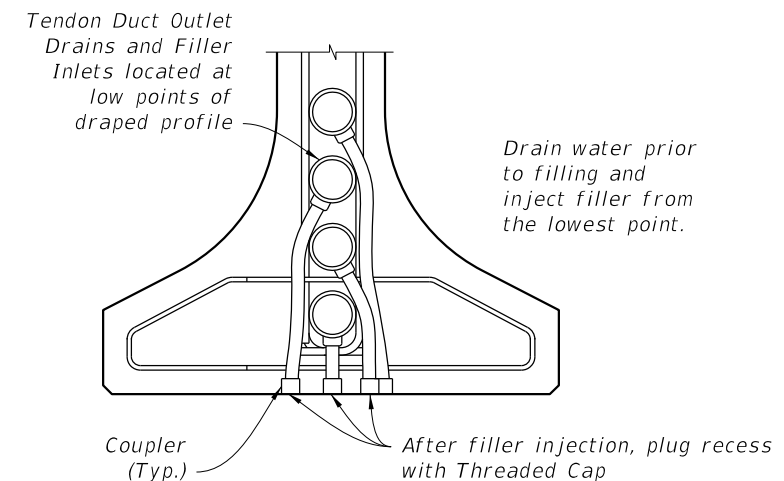
3 FILLING POCKET

- PROCEDURE:
1. Remove Rigid Filler Pipe or drill Grout in flexible pipe.
 2. Inspect tendon for voids.
 3. Vacuum inject as required. If grout is used, allow grout to cure. If flexible filler is used, replace filler displaced by inspection. Remove pipe used for vacuum injecting.
 4. Install Threaded Plug into Outlet to form a tight fit.
 5. Over-ream hole ($\frac{1}{4}$ " \varnothing over-ream). Clean and roughen sides.
 6. Fill pocket with epoxy grout.

FILLER OUTLET DETAIL AT VERTICAL SURFACES



TENDONS AT HIGH POINTS AND 3' FROM HIGH POINTS (FILLER OUTLET)



TENDONS AT LOW POINTS (FILLER INLET / DRAIN)

FILLER INLET AND OUTLET DETAILS FOR I-GIRDERS
Details for C.I.P. Boxes with Internal Tendons similar. Web reinforcing not shown for clarity.

7/22/2016 10:19:57 AM

| | |
|--------------------------|---|
| LAST REVISION 7/22/16 | DESCRIPTION: Deleted high point inspection detail with rigid filler pipes. |
|--------------------------|---|