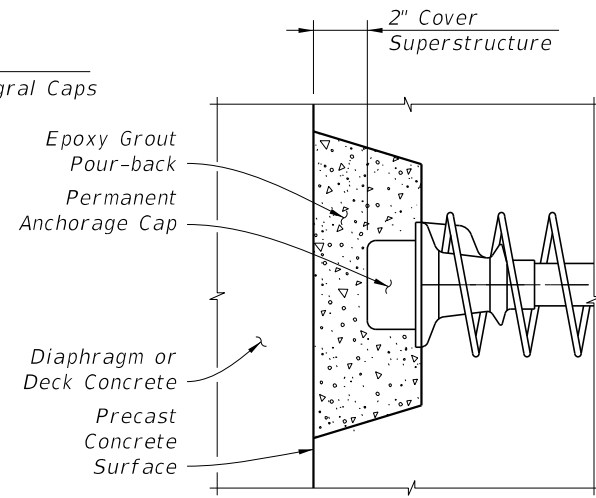
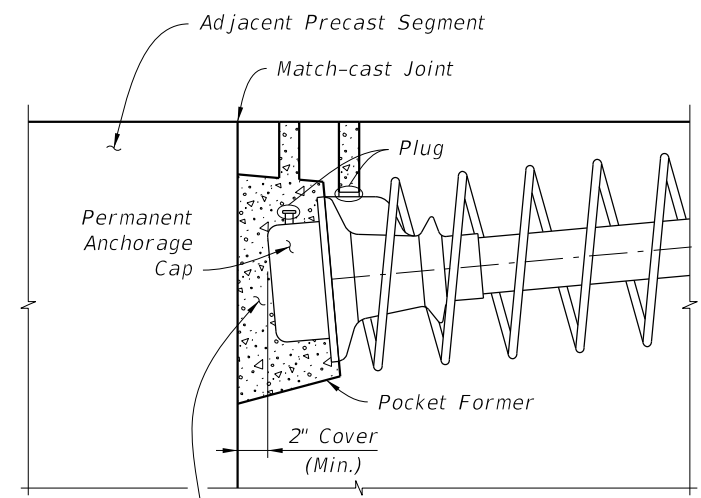


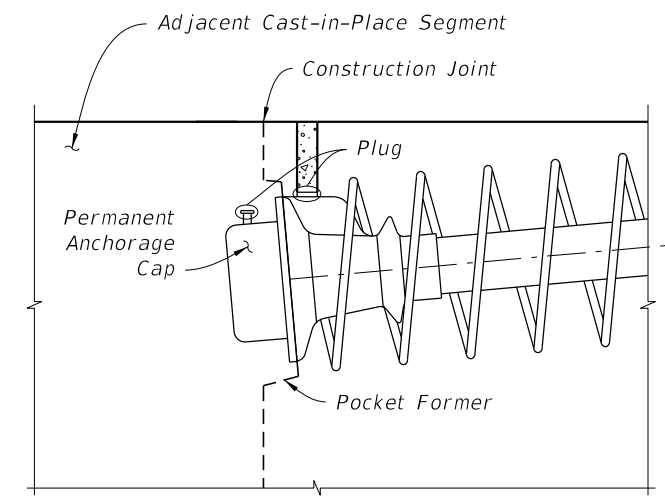
**TYPE 1**



**TYPE 2**

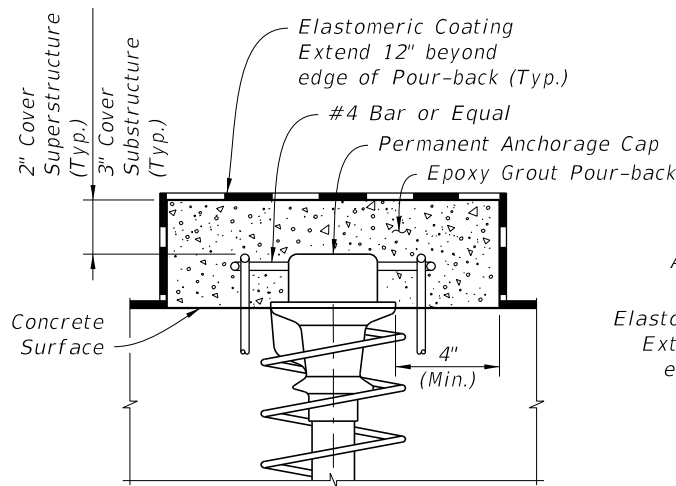


**TYPE 3A**

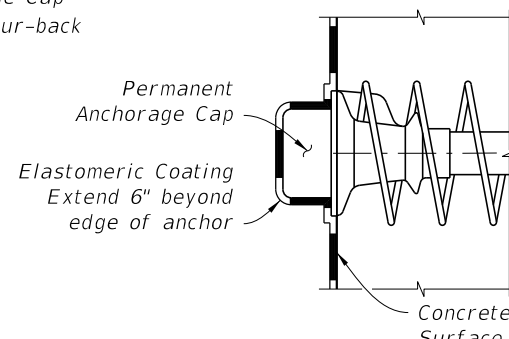


**TYPE 3B**

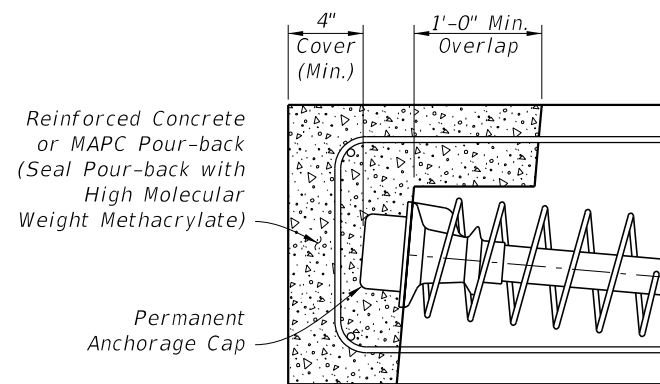
Epoxy Grout Pour-back placed after permanent tendons anchored in adjacent segment have been stressed



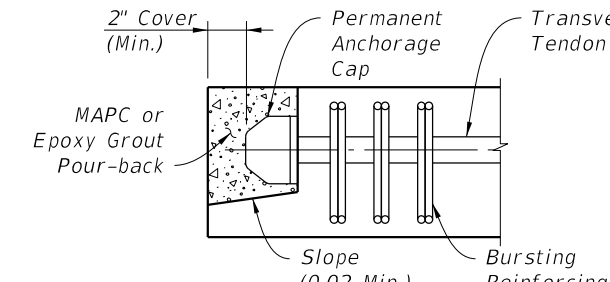
**TYPE 4**



**TYPE 5**



**TYPE 6**

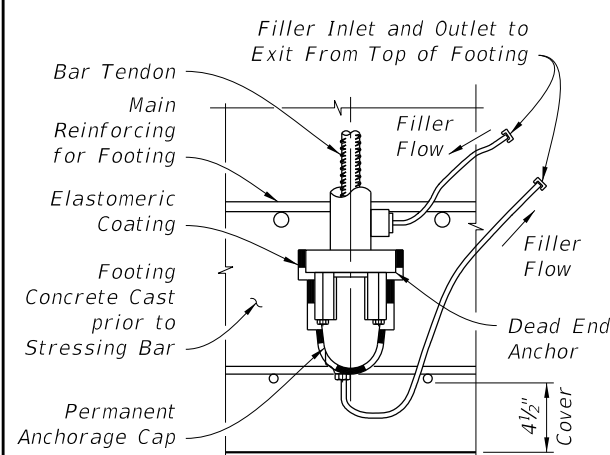


**TYPE 7**

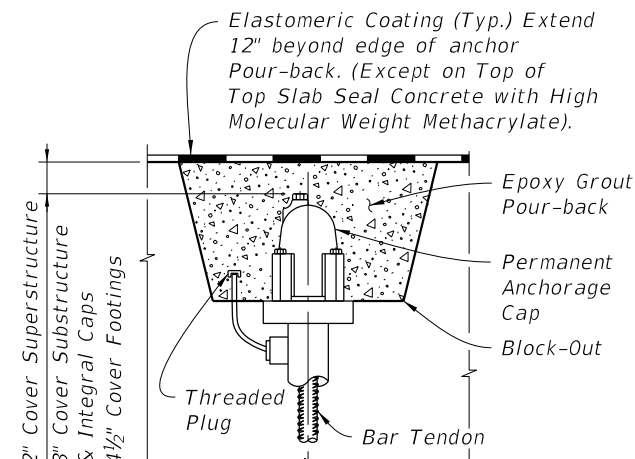
Type 7 Notes:

1. Traffic or Pedestrian/Bicycle Railing not shown for clarity.
2. Where Pour-back is not protected by Traffic or Pedestrian/Bicycle Railing, Coat Pour-back with High Molecular Weight Methacrylate.

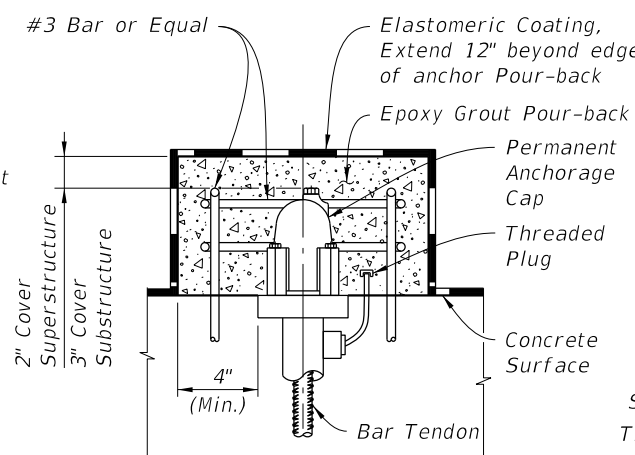
**ANCHORAGE PROTECTION FOR STRAND TENDONS**



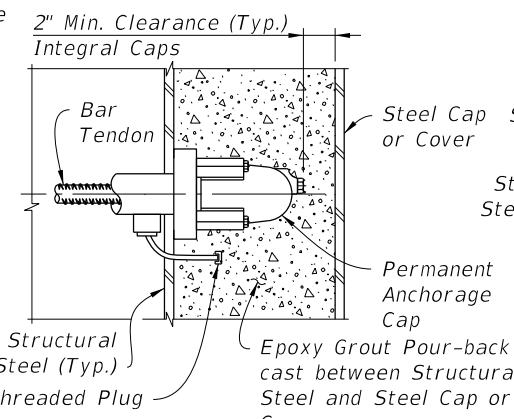
**TYPE 8**



**TYPE 9**

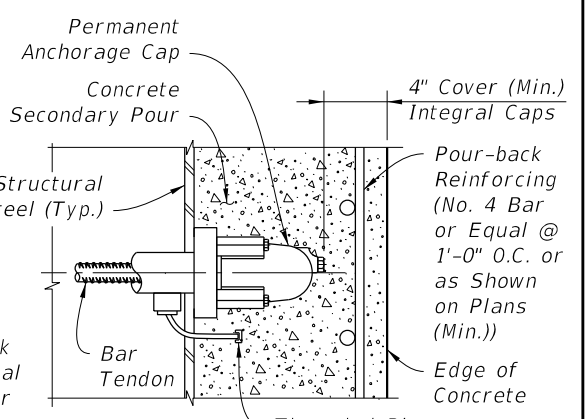


**TYPE 10**



**TYPE 11**

(Shear Studs not Shown for Clarity)



**TYPE 12**

(Shear Studs not Shown for Clarity)

**ANCHORAGE PROTECTION FOR BAR TENDONS**

7/22/2016 10:18:39 AM

LAST REVISION 7/22/16

REVISION DESCRIPTION:  
Renamed Type 3 to Type 3A. Added Type 3B. Changed "cover" to "clearance" in Type 11.

**FDOT** FY 2016-17 DESIGN STANDARDS

POST-TENSIONING ANCHORAGE PROTECTION

INDEX NO. 21802

SHEET NO. 1 of 1