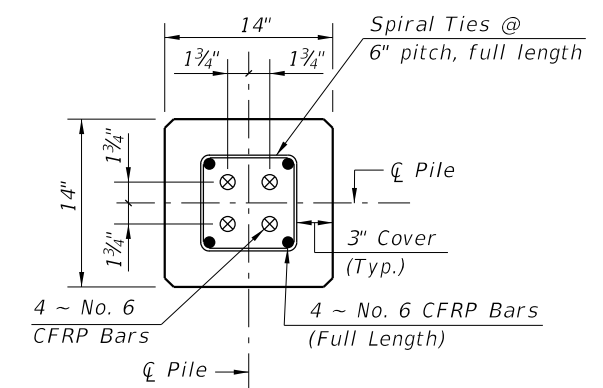
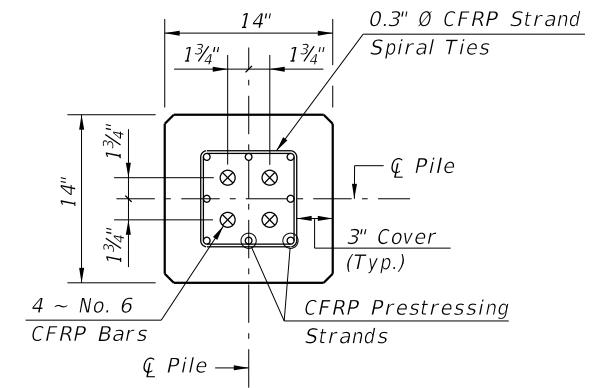


ELEVATION



SECTION D-D

(See Nondrivable Unforescen Reinforced Precast Pile Build-Up Detail)

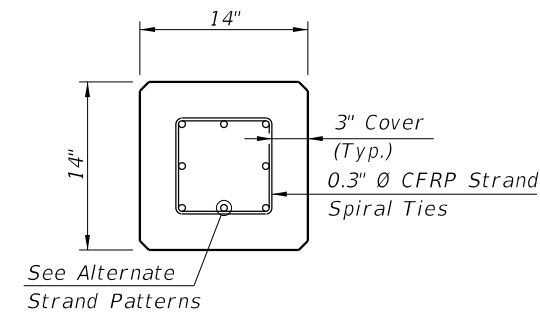


SECTION E-E

(See Drivable Unforescen Prestressed Precast Pile Splice Detail)

ALTERNATE STRAND PATTERNS

- 8 ~ 0.6" Ø, CFRP 7-Strand, at 31.5 kips
- 8 ~ 1/2" Ø, CFRP Single-Strand, at 30.5 kips



SECTION A-A

CFRP PILE SPLICE REINFORCEMENT DETAILS

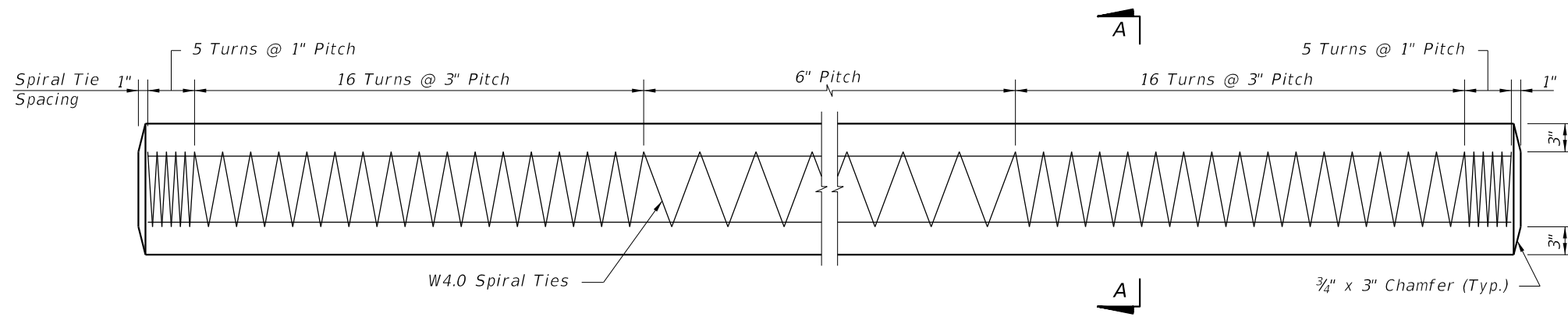
NOTES:

1. Work this Index with Index D22600 - Notes and Details for Square CFRP & SS Prestressed Concrete Piles and Index D22601 - Square CFRP & SS Prestressed Concrete Pile Splices.
2. Any of the given Alternate Strand Patterns may be utilized. The strands shall be located as follows:
Place one strand at each corner and equally space the remaining strands between the corner strands.
The total strand pattern shall be concentric with the nominal concrete section of the pile.

CFRP PRESTRESSED PILE DETAILS

12/17/2015 2:16:08 PM

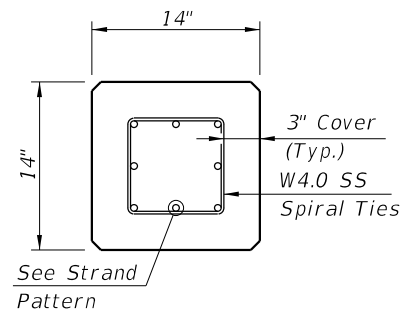
| | | | | | | |
|---------------------------|----------|--------------|------------------------------------|---|--------------------|---------------------|
| LAST REVISION 01/01/16 | REVISION | DESCRIPTION: | FY 2016-17 DESIGN STANDARDS | 14" SQUARE CFRP & SS PRESTRESSED CONCRETE PILE | INDEX NO. 22614 | SHEET NO. 1 of 2 |
|---------------------------|----------|--------------|------------------------------------|---|--------------------|---------------------|



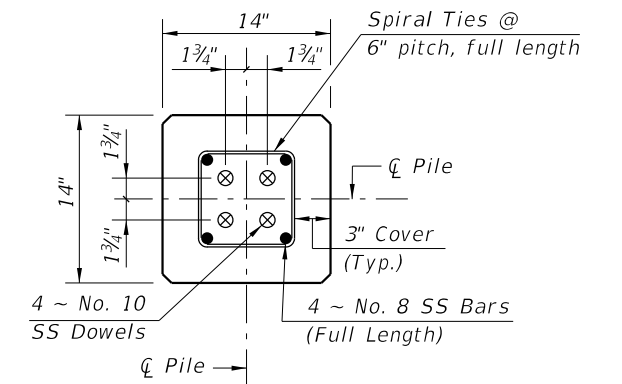
ELEVATION

STRAND PATTERN

12 ~ 1/2" Ø, HSSS at 23 kips

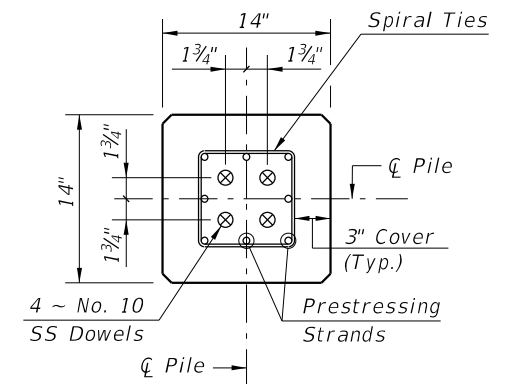


SECTION A-A



SECTION D-D

(See Nondrivable Unforeseen Reinforced Precast Pile Build-Up Detail)



SECTION E-E

(See Drivable Unforeseen Prestressed Precast Splice Detail)


SS PILE SPLICE REINFORCEMENT DETAILS

NOTES:

1. Work this Index with Index No. 22600 - Notes and Details for Square CFRP & SS Prestressed Concrete Piles and Index No. 22601 - Square CFRP & SS Prestressed Concrete Pile Splices.
2. Any of the given Alternate Strand Patterns may be utilized. The strands shall be located as follows:
Place one strand at each corner and place the remaining strands equally spaced between the corner strands. The total strand pattern shall be concentric with the nominal concrete section of the pile.

SS PRESTRESSED PILE DETAILS

12/17/2015 2:16:09 PM

| | | | | | | |
|---------------------------|----------|--------------|--|---|--------------------|---------------------|
| LAST REVISION 01/01/16 | REVISION | DESCRIPTION: |  FY 2016-17 DESIGN STANDARDS | 14" SQUARE CFRP & SS PRESTRESSED CONCRETE PILE | INDEX NO. 22614 | SHEET NO. 2 of 2 |
|---------------------------|----------|--------------|--|---|--------------------|---------------------|