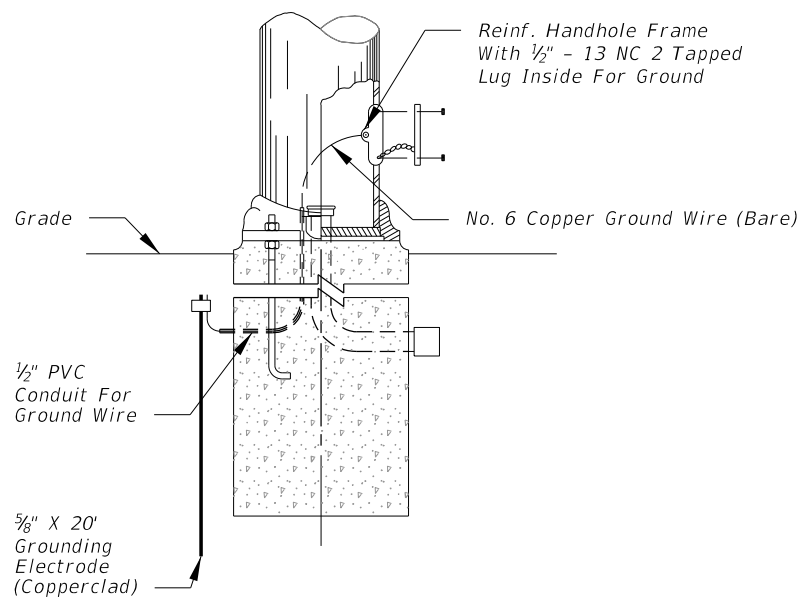
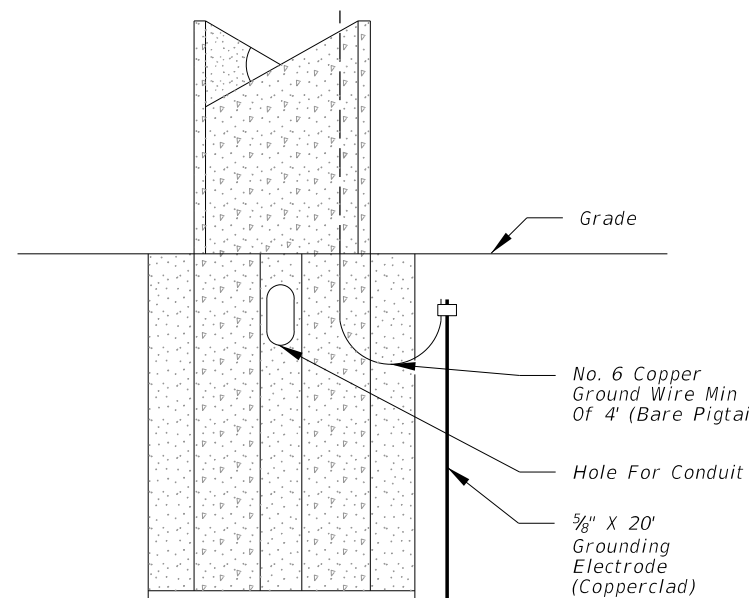


**NOTES:**

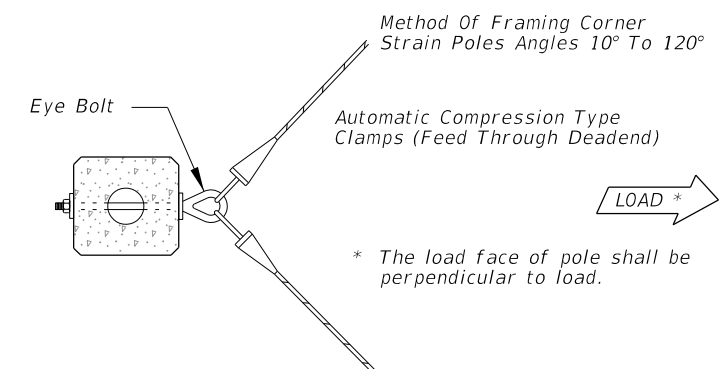
1. With the approval of the resident engineer, the service head hole for joint use poles may be drilled by the utility company at an angle of 90° but not less than 45° to the face of the pole.
2. Lashing wire should normally be used for distances of 12' or greater.
3. All hardware for signal attachment shall be stainless steel.
4. Hole for eye bolt will require field reaming for 1" & 1 1/4" eye bolts.
5. Meet all grounding requirements of Section 620 of the Standard Specifications.



**ELEVATION  
STEEL POLE**



**ELEVATION  
PRESTRESSED CONCRETE POLE**



**PLAN  
PRESTRESSED CONCRETE POLE**

11/30/2015 1:01:23 PM

LAST REVISION 07/01/15	REVISION	DESCRIPTION:
---------------------------	----------	--------------

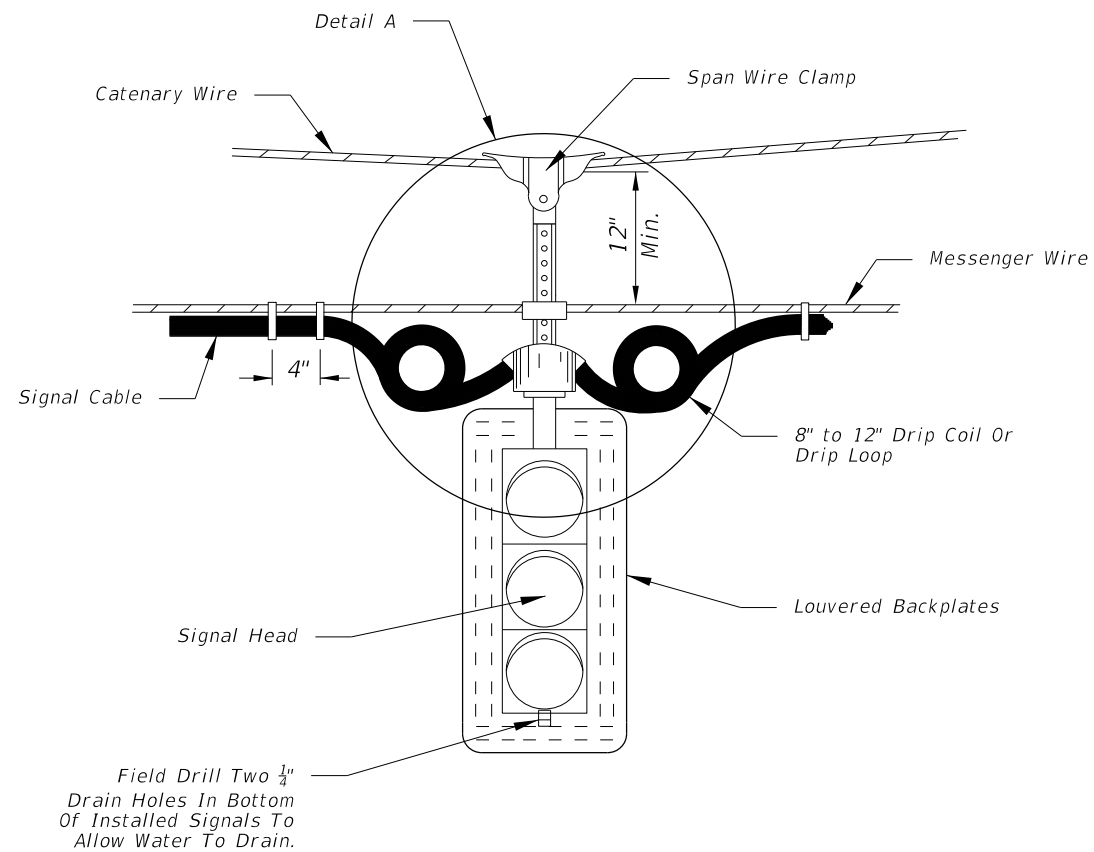


FY 2016-17  
DESIGN STANDARDS

**SIGNAL CABLE & SPAN WIRE  
INSTALLATION DETAILS**

INDEX NO.  
**17727**

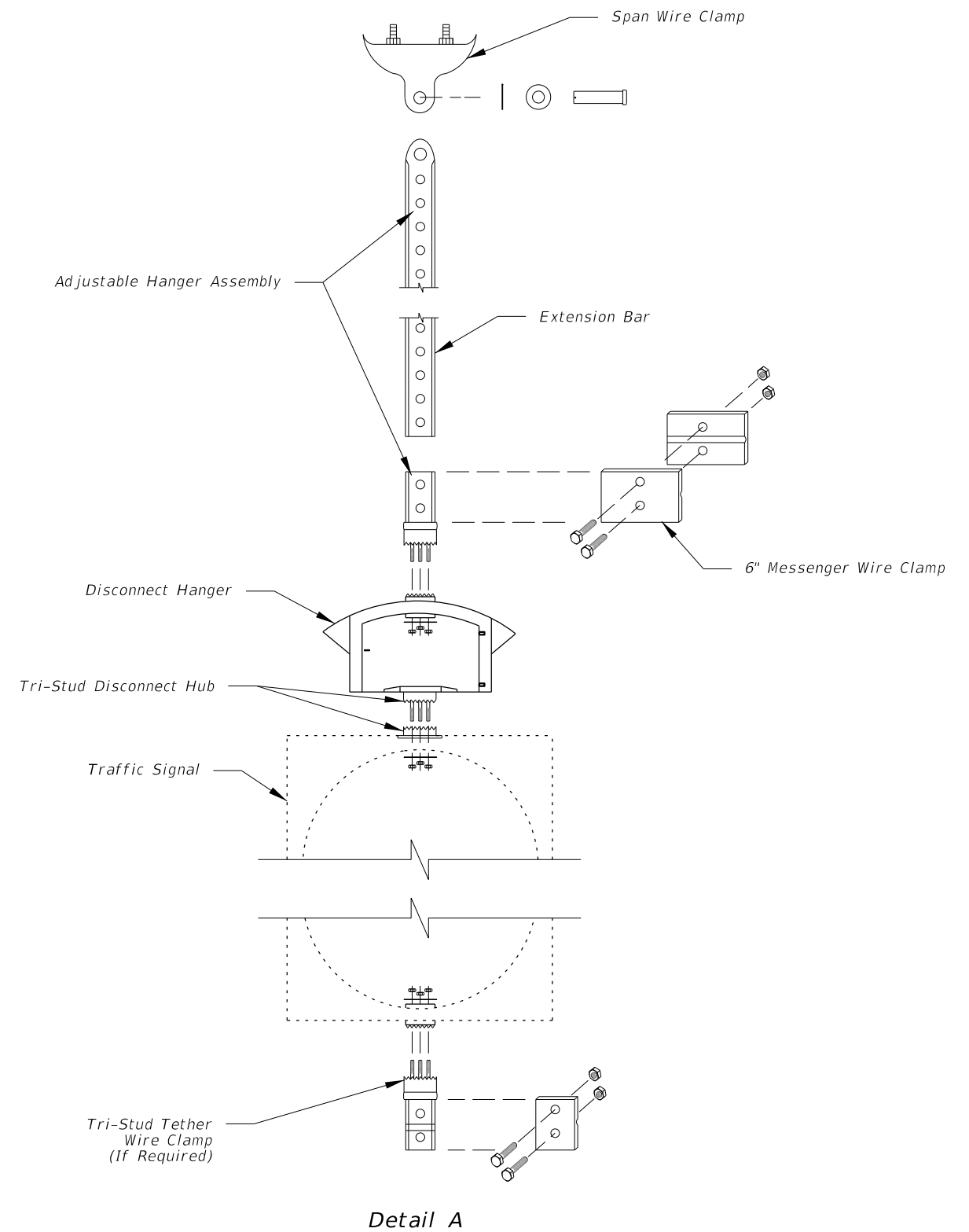
SHEET NO.  
**1 of 2**



**SIGNAL ATTACHMENT**

**Notes:**

1. With the approval of the resident engineer, the service head hole for joint use poles may be drilled by the utility company at an angle of 90° but not less than 45° to the face of the pole.
2. Use only span wire mounting assemblies listed on the APL.



**Detail A**

**TWO POINT ATTACHMENT**

12/21/2015 6:30:00 AM

LAST REVISION 12/17/15	REVISION	DESCRIPTION:
---------------------------	----------	--------------