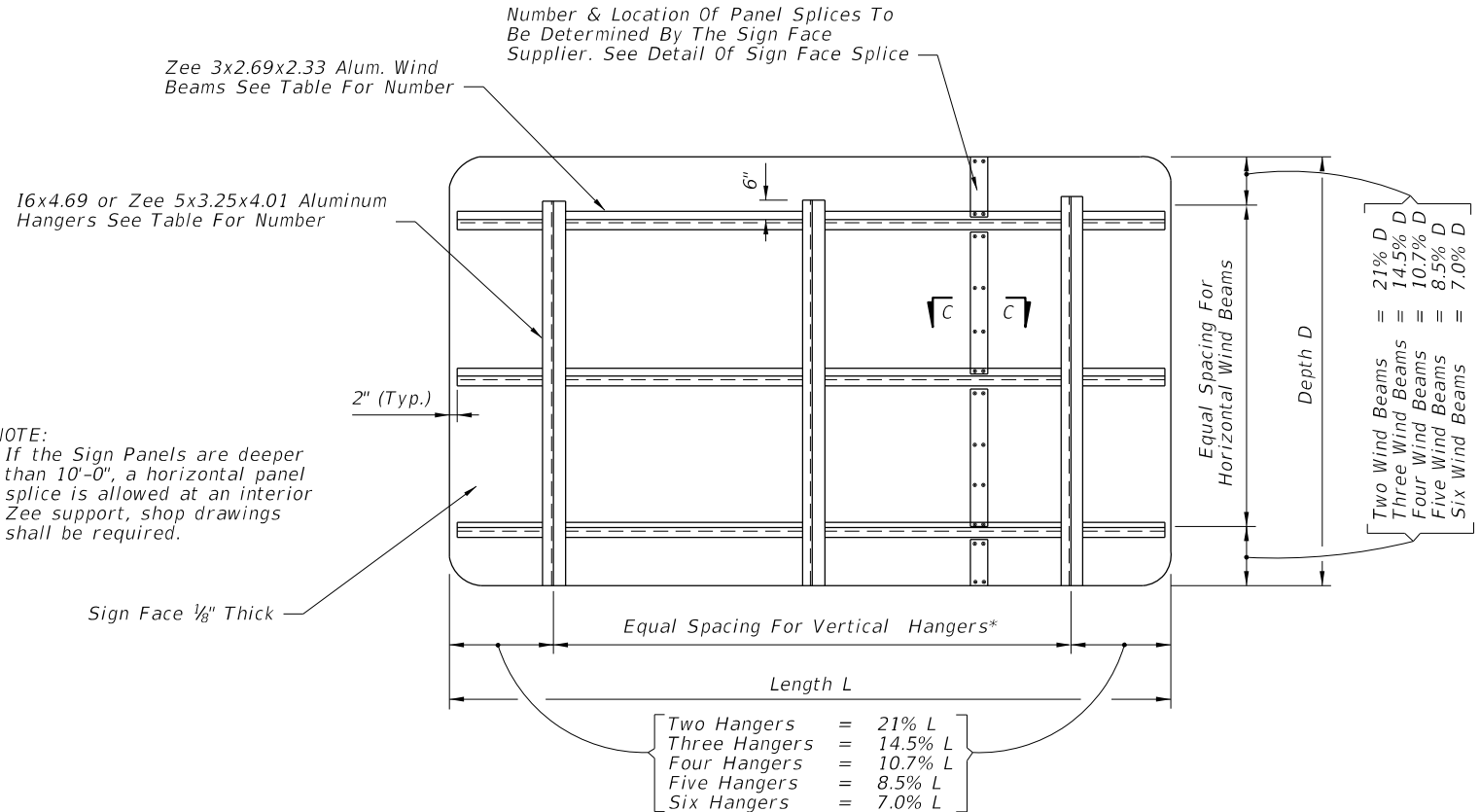
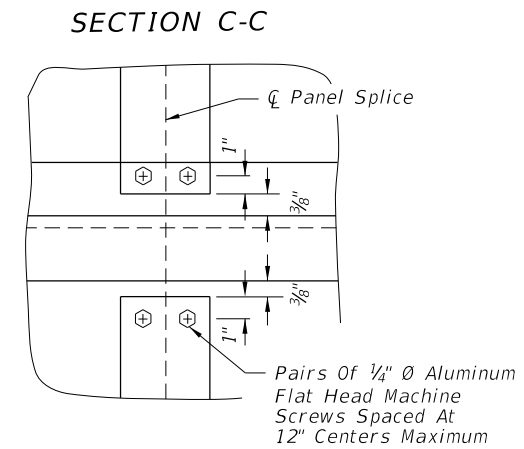
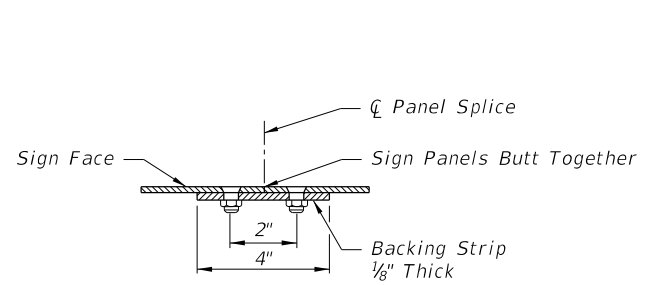


12/9/2015 11:34:43 AM

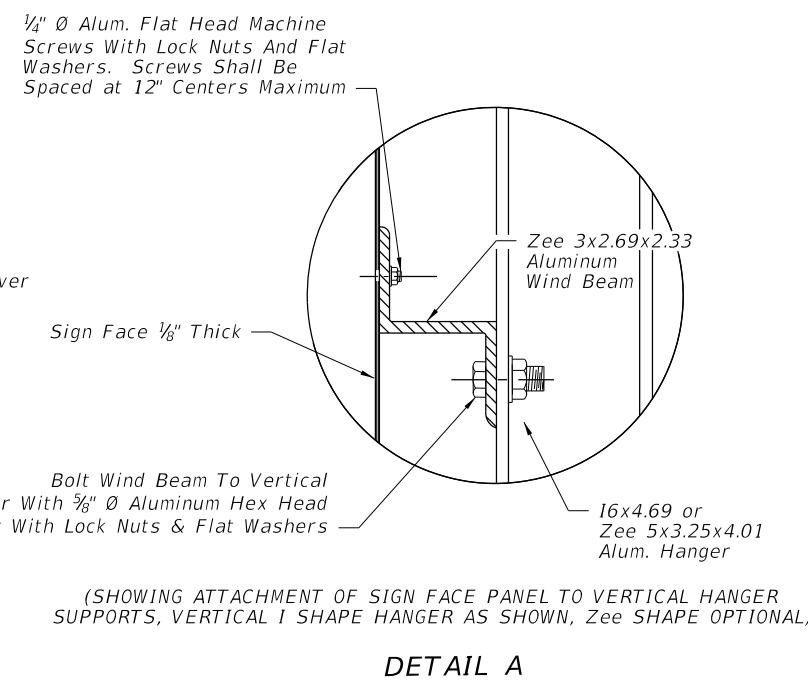


Number Of Zee 3x2.69x2.33 Horiz. Wind Beams For Sign Depth And Wind			Number Of 16x4.69 or Zee 5x3.25x4.01 Vertical Hanger Beams For Sign Length				
Wind M.P.H.	No. Beams	Max. Depth	2 Hangers	3 Hangers	4 Hangers	5 Hangers	6 Hangers
			Max Length	Max Length	Max Length	Max Length	Max Length
150	2	5'	15'	30'	45'	X	X
150	3	9'	15'	30'	45'	X	X
150	4	12'	15'	22'	30'	38'	45'
150	5	15'	15'	22'	30'	38'	45'
150	6	18'	15'	22'	30'	38'	45'
130	2	5'	15'	30'	45'	X	X
130	3	9'	15'	30'	45'	X	X
130	4	12'	15'	22'	30'	38'	45'
130	5	15'	15'	22'	30'	38'	45'
130	6	18'	15'	22'	30'	38'	45'
110	2	5'	15'	30'	45'	X	X
110	3	9'	15'	30'	45'	X	X
110	4	12'	15'	30'	38'	45'	X
110	5	15'	15'	30'	38'	45'	X
110	6	18'	15'	30'	38'	45'	X

TYPICAL SIGN FACE ELEVATION FOR OVERHEAD TRUSS



TYPICAL DETAIL OF SIGN & TRUSS CONNECTION



DETAILS OF SIGN FACE & TRUSS CONNECTION

GENERAL NOTES

- Work this Index with Index 11200.
- Shop Drawings:
 - Required for Sign Panels deeper than 10'-0" with a horizontal panel splice.
 - Splice must be located at an interior Zee Support and only allowed on signs greater than 10'-0".
- Materials:
 - Aluminum:
 - Bars, and Extruded Shapes: ASTM B 221, Alloy 6061-T6 or Alloy 6351-T5
 - Structural Shapes: ASTM B308, Alloy 6061-T6
 - Flat Head and Hex Head Machine Bolts: ASTM F468, Alloy 2024-T4
 - Hex Nuts: ASTM F467, Alloy 6061-T6 or Alloy 6262-T9
 - Washers: ASTM B221, Alloy 7075-T6
 - Steel Materials:
 - U-Bolts: ASTM A449 or ASTM A193 B7
 - Nuts: ASTM F563, 2 per leg
 - Washers: ASTM F436
- Coatings:
 - Aluminum Bolts, Nuts and Washers: Anodic (0.0002 inches min) and chromate sealed.
 - Galvanized Steel Bolts, Nuts and Washers: ASTM F2329

LAST REVISION	DESCRIPTION:
01/01/16	