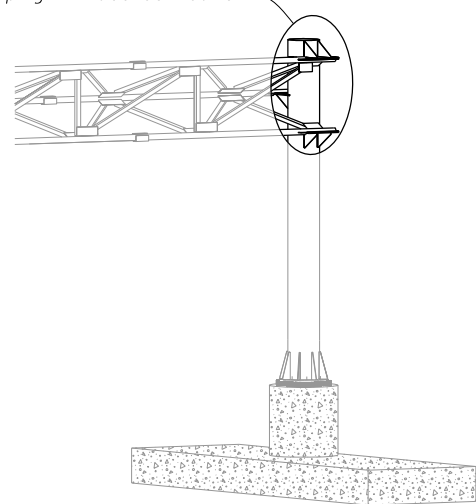
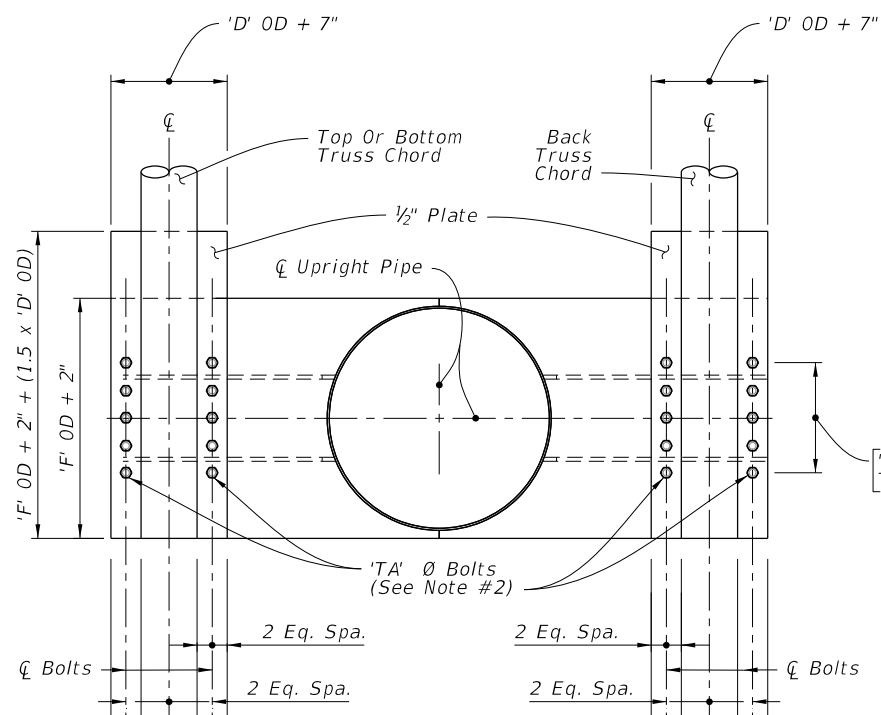


Upright-Truss Connection

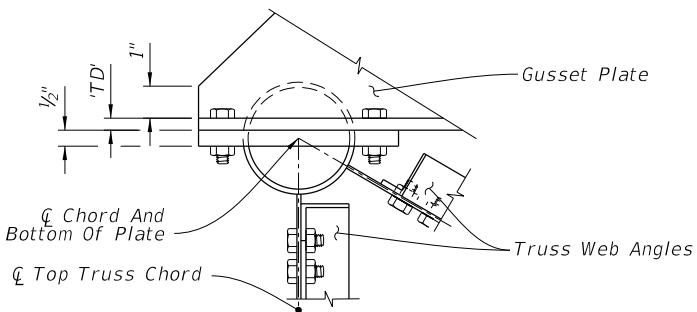


CANTILEVER ASSEMBLY

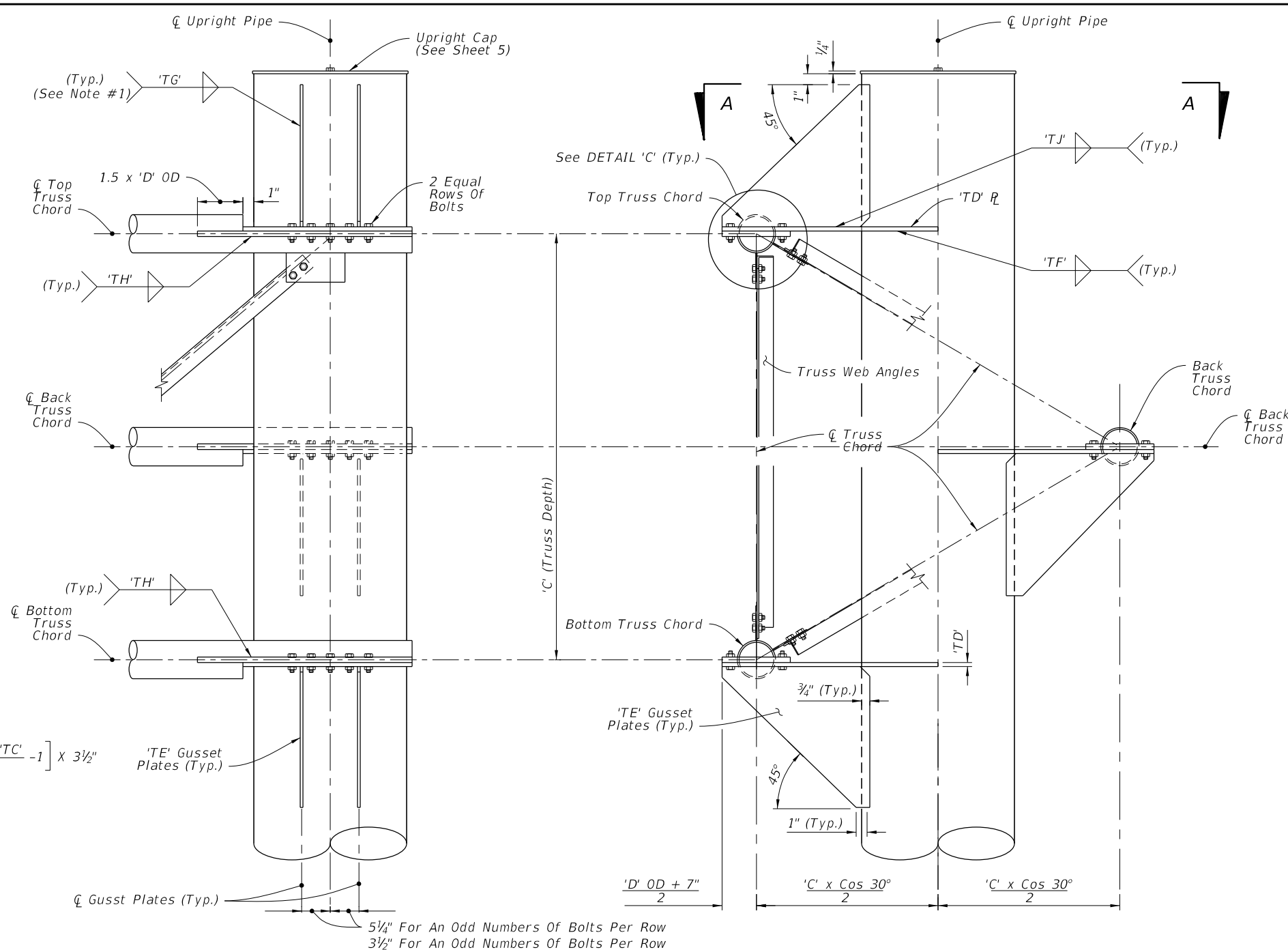


SECTION A-A

(With Gusset Plates And Web Angles Omitted For Clarity)



DETAIL 'C'



FRONT ELEVATION

SIDE ELEVATION

UPRIGHT-TRUSS CONNECTION DETAIL

(Web Members From Back Truss Chord Omitted For Clarity)

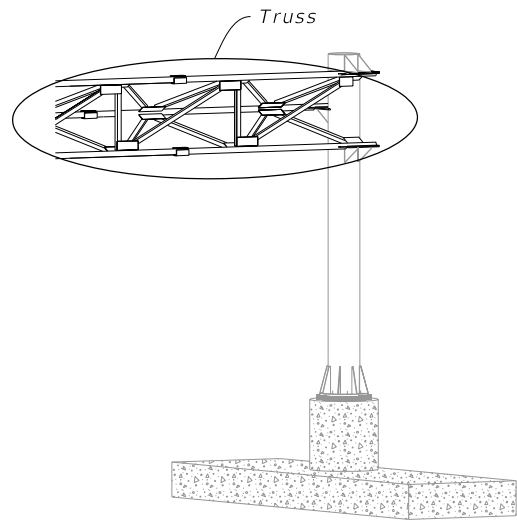
NOTES:

1. Wrap fillet weld around the stiffener termination on the tube wall.
2. Truss Chord Bolts:
  - A. Top and Bottom: Install 'TC' hex head bolts with self locking nuts.
  - B. Back: Install 'TB' hex head bolts with self-locking nuts.

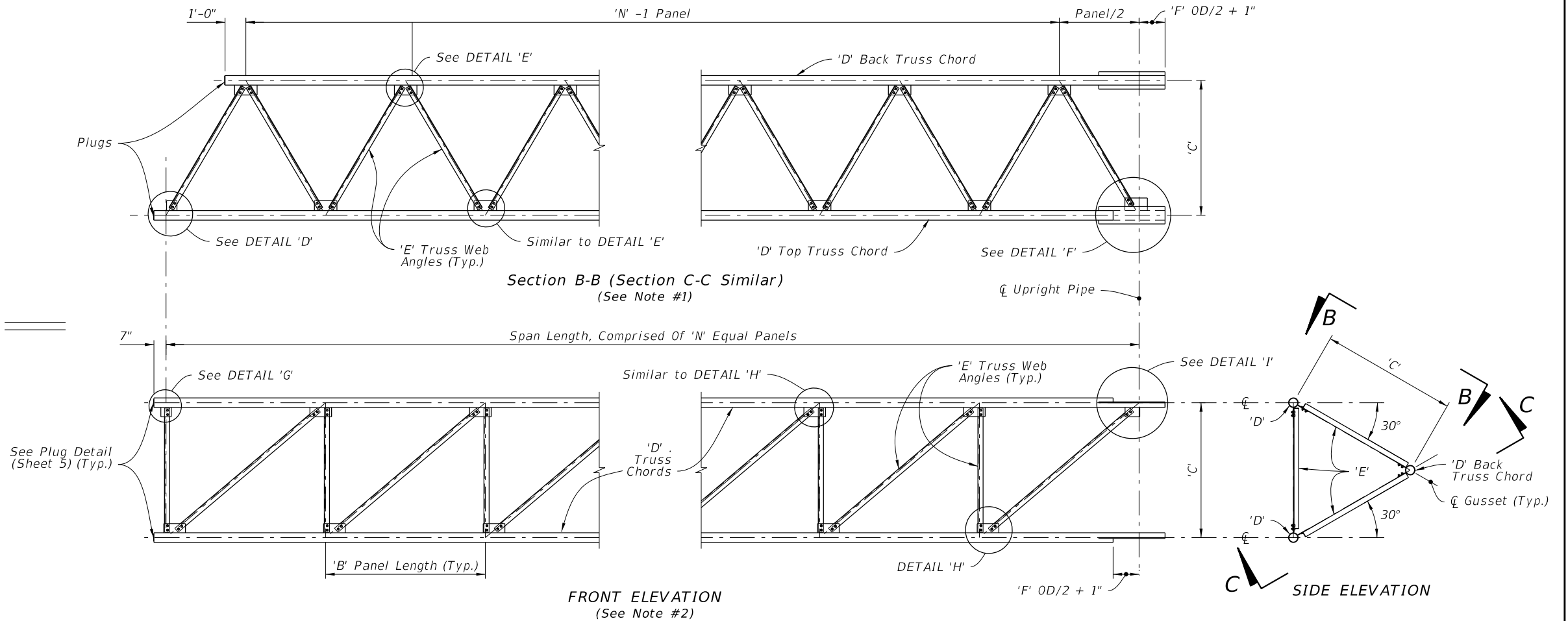
DELETE: Self Locking Nuts

1/13/2016 10:12:23 AM

LAST REVISION	DESCRIPTION:
01/01/16	

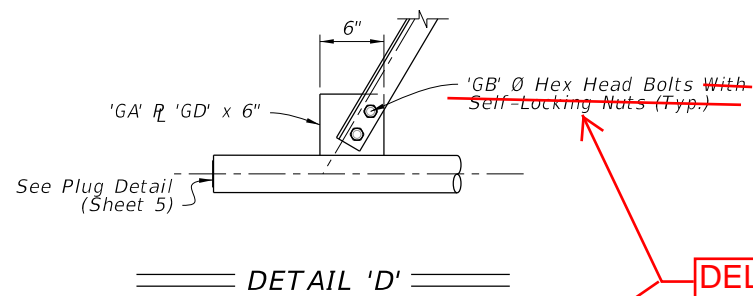


**CANTILEVER ASSEMBLY**

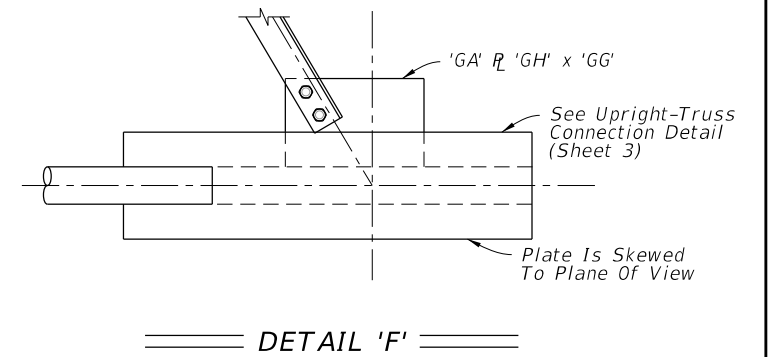
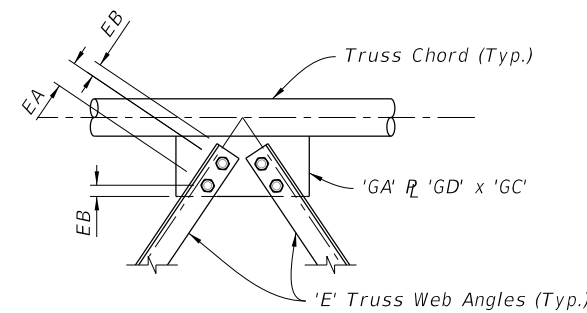


**TRUSS NOTES:**

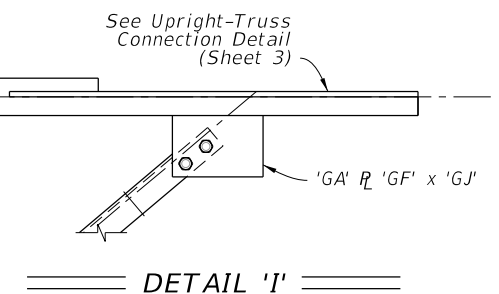
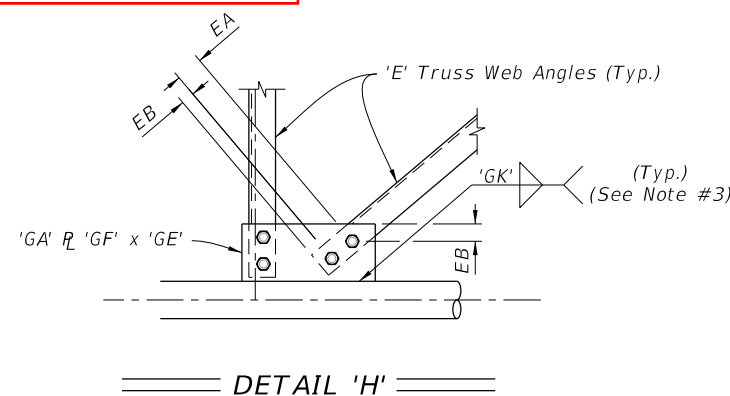
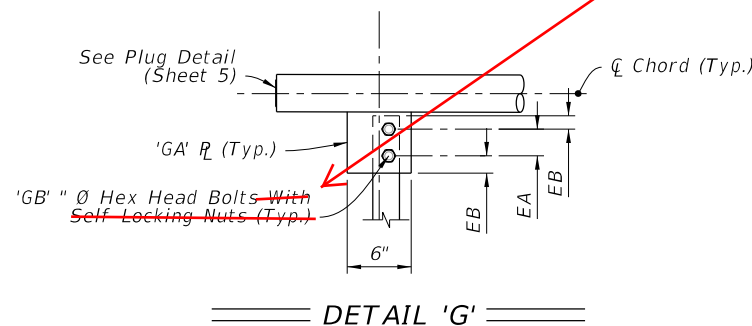
1. Out-of-plane members are not shown for clarity.
2. Back truss chord and attached angles are not shown for clarity.
3. Wrap fillet weld around plate termination on the tube wall.
4. Chord Splices not shown.



**DELETE: Self Locking Nuts**



Bolt Size	Distance	
	EA	EB
1" Ø	3 1/2"	1 3/4"
7/8" Ø	3"	1 1/2"
3/4" Ø	2 1/2"	1 1/4"
5/8" Ø	2 1/4"	1 1/8"



11/30/2015 2:18:55 PM