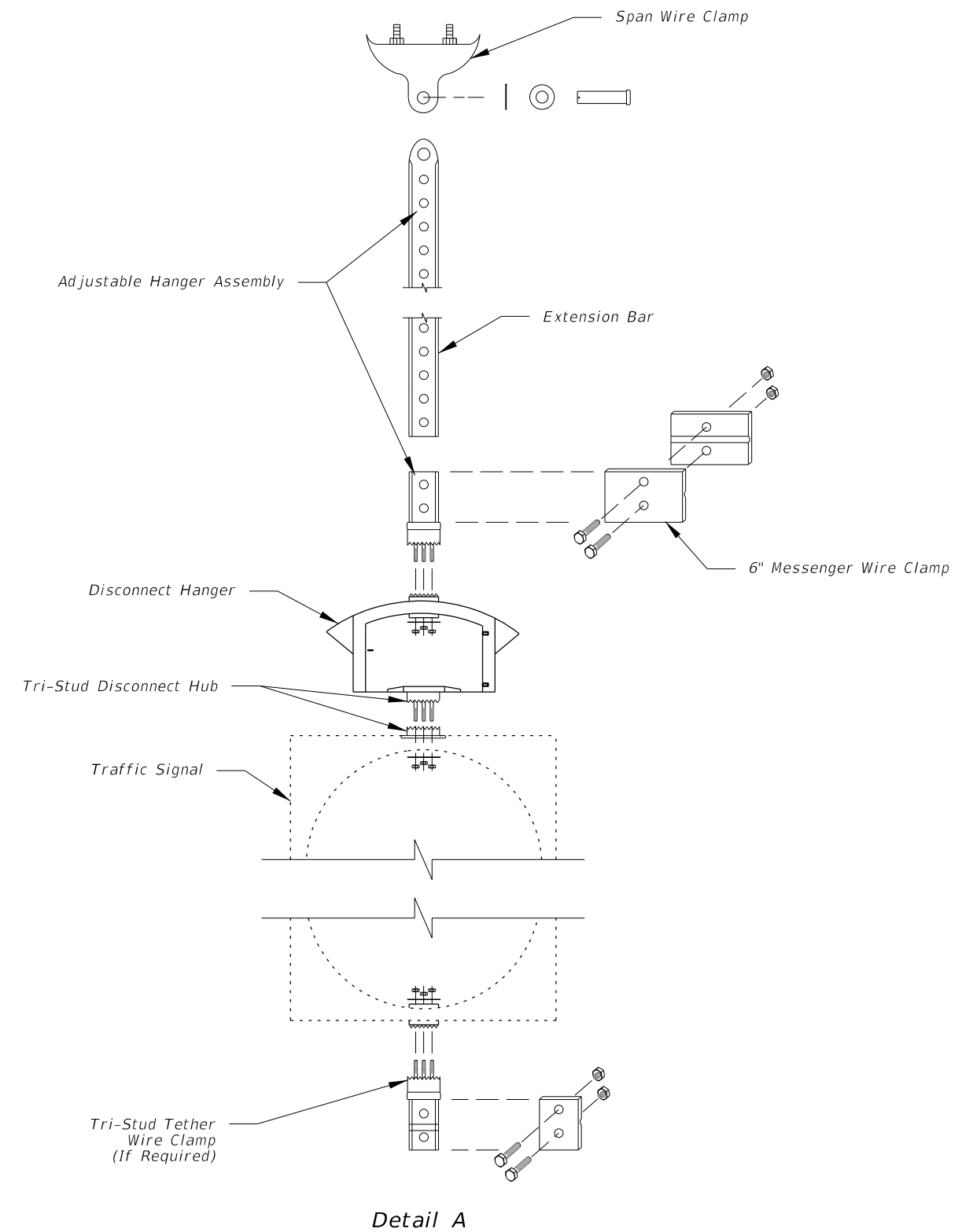


**SIGNAL ATTACHMENT**

**Notes:**

1. With the approval of the resident engineer, the service head hole for joint use poles may be drilled by the utility company at an angle of 90° but not less than 45° to the face of the pole.
2. Use only span wire mounting assemblies listed on the APL.

Field Drill Two 1/4" Drain Holes In Bottom Of Installed Signals To Allow Water To Drain.



**Detail A**

**TWO POINT ATTACHMENT**

12/17/2015 3:03:48 PM

LAST REVISION 12/17/15	REVISION	DESCRIPTION: Deleted the Pivotal Hanger Assembly; Changed the Upper and Lower Reinforcement Plates to Tri-Stud Wire Clamps; Changed the Message Cable Clamp; Deleted Notes #1, 3-5 and added new note; Deleted the Vertical Clearance Information; Changed Bottom Tether Clamp to a Tri-Stud Clamp.
---------------------------	----------	---