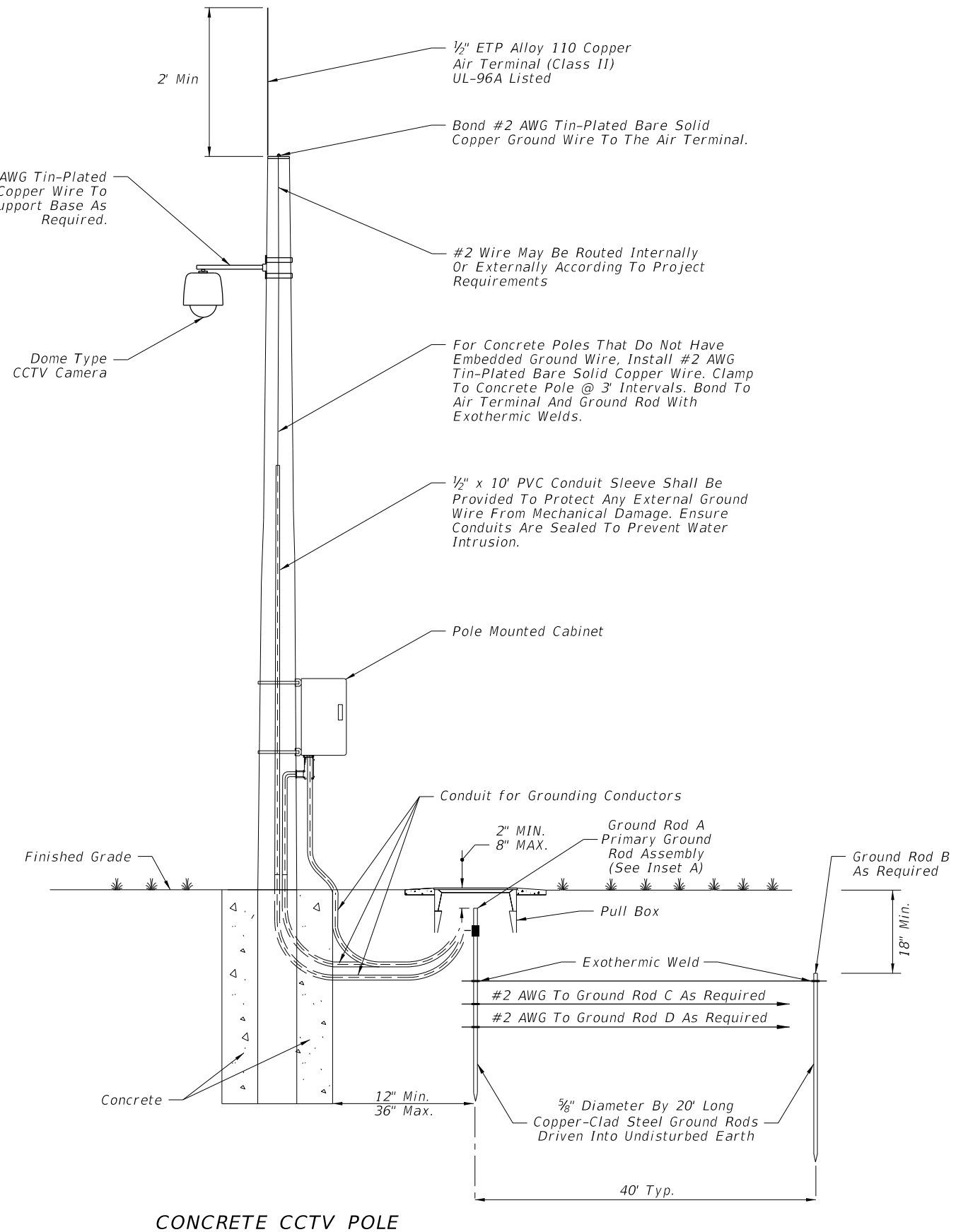
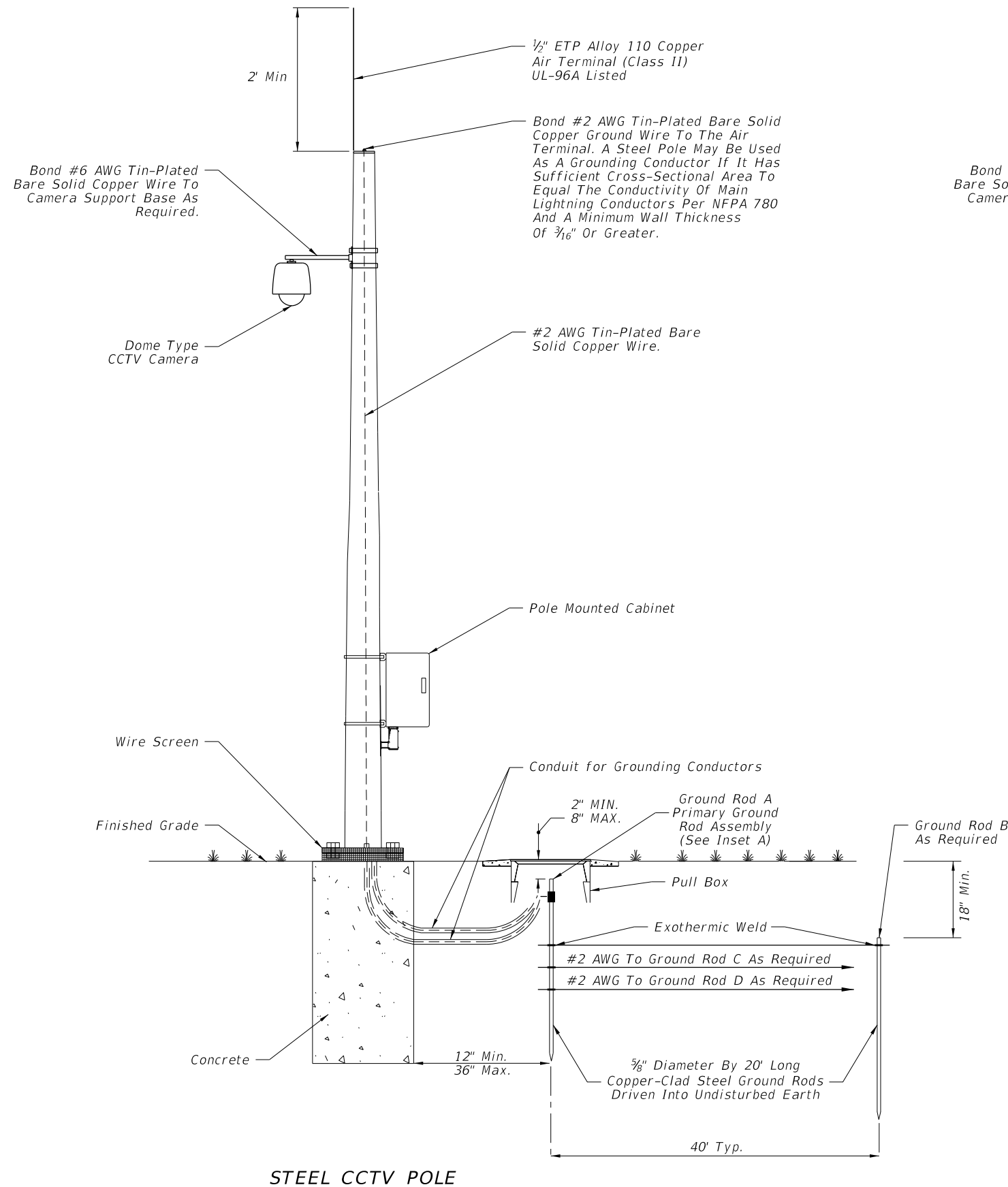


6/10/2015 10:39:01 AM



LAST REVISION 07/01/14

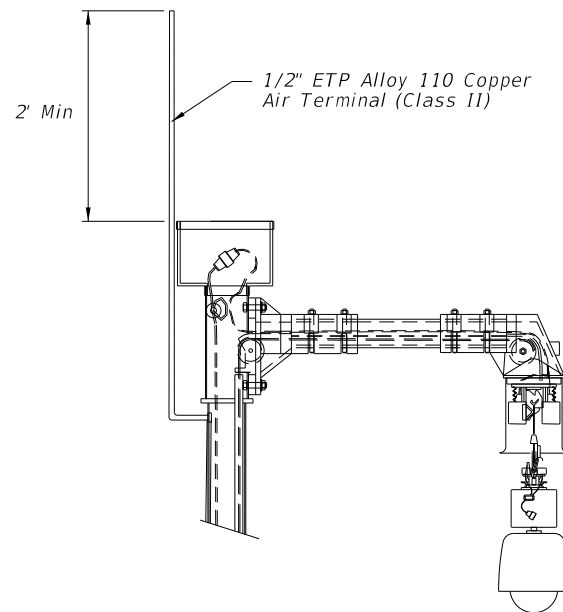
REVISION DESCRIPTION:

2016 FDOT DESIGN STANDARDS

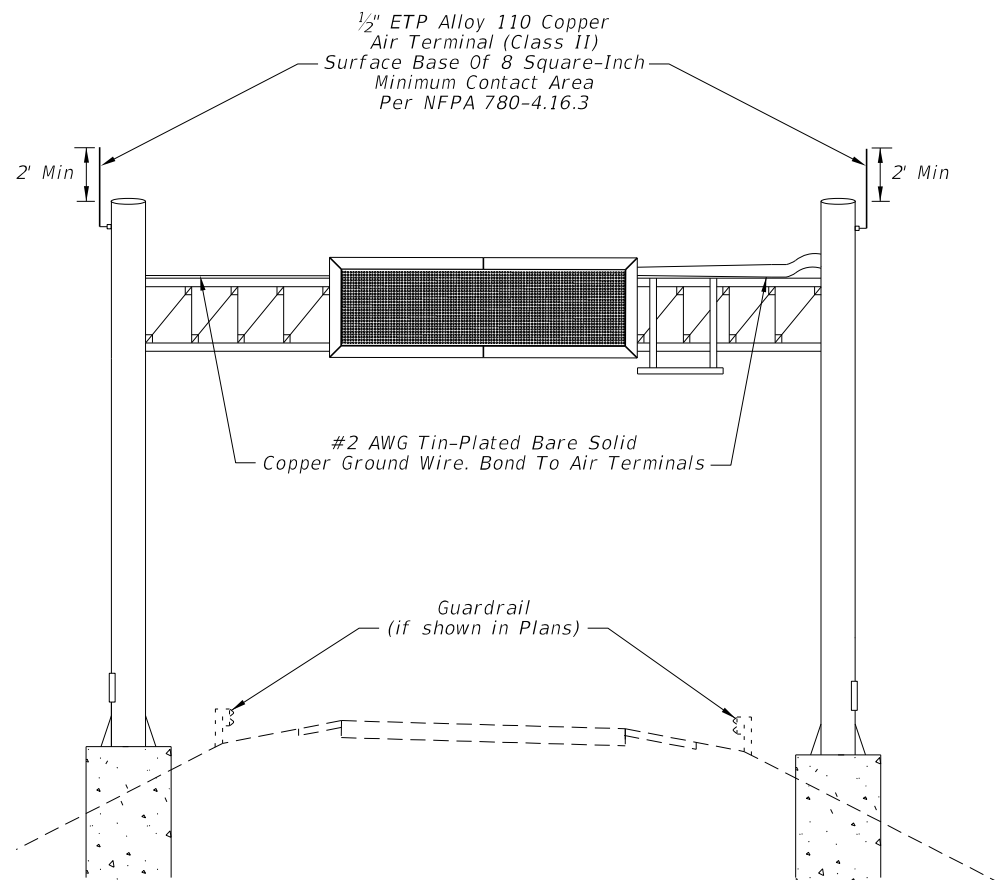
GROUNDING AND LIGHTNING PROTECTION

INDEX NO. 18102

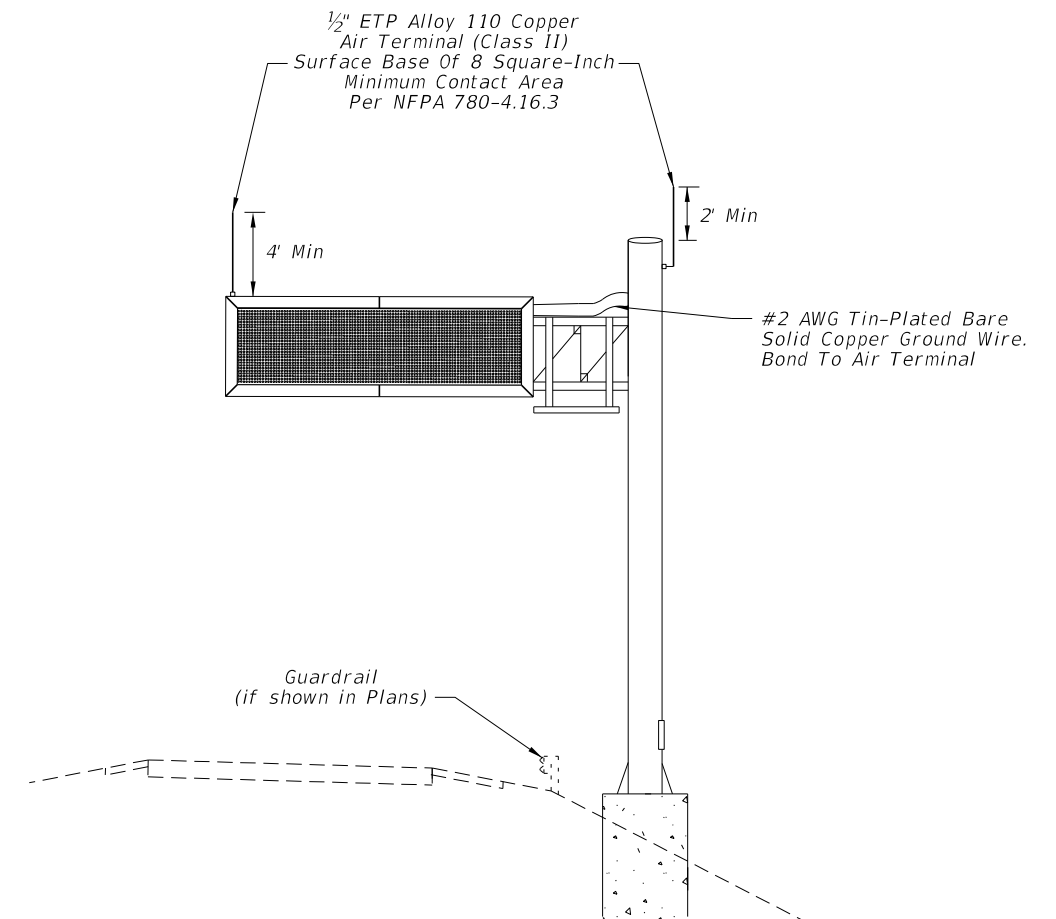
SHEET NO. 1 of 4



AIR TERMINAL PLACEMENT
(Lowering Device Pole)




AIR TERMINAL PLACEMENT
(Span DMS)

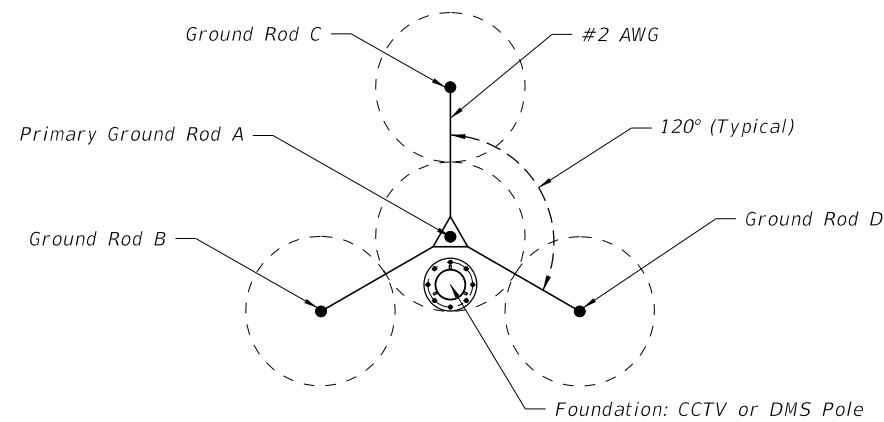


AIR TERMINAL PLACEMENT
(Cantilever DMS)

6/10/2015 10:39:02 AM

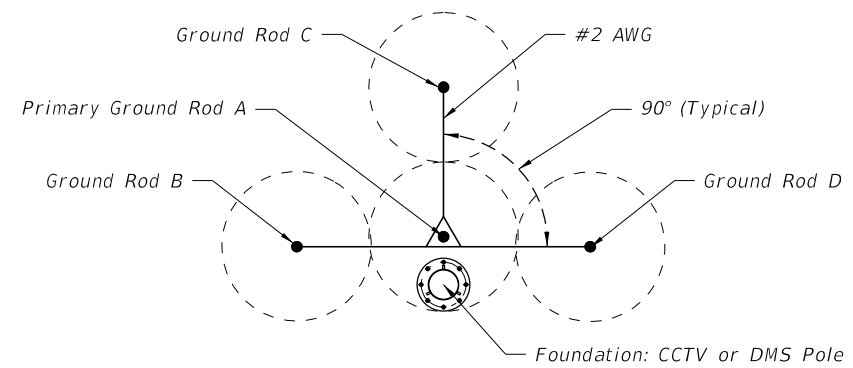
LAST REVISION 07/01/15	REVISION	DESCRIPTION:	 2016 DESIGN STANDARDS	GROUNDING AND LIGHTNING PROTECTION	INDEX NO. 18102	SHEET NO. 2 of 4
---------------------------	----------	--------------	--	---	---------------------------	----------------------------

"Sphere Of Influence: 120 Degree"

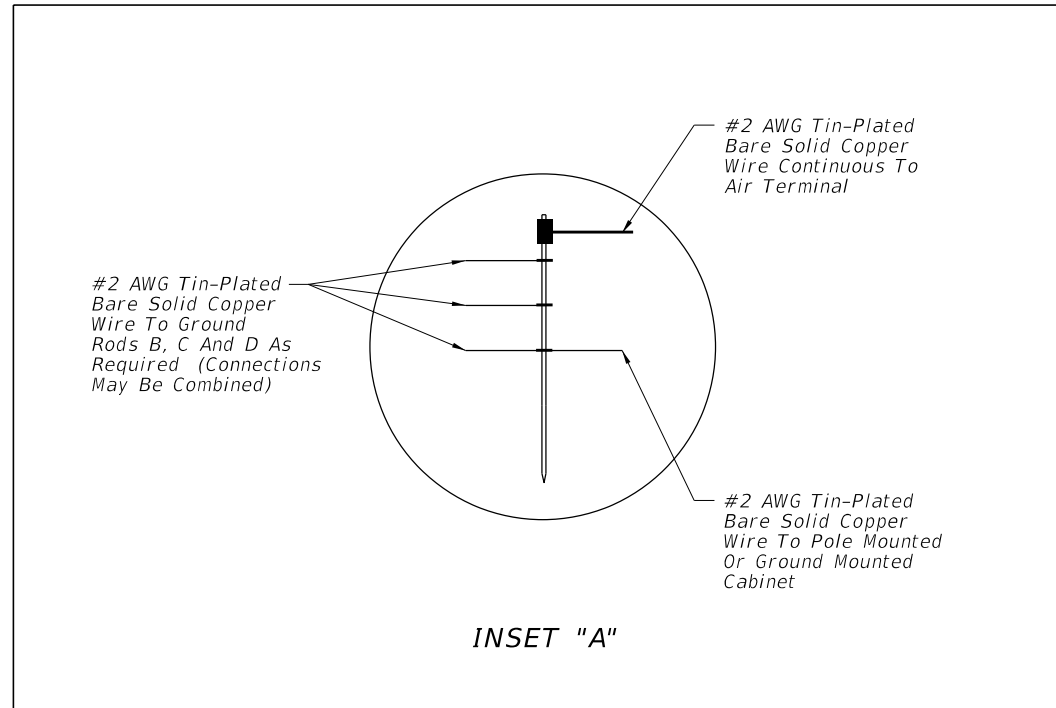


GROUND ROD ARRAY PLACEMENT
(Typical)
20' RODS, 40' SPACING

"Modified Sphere Of Influence: 90 Degree"



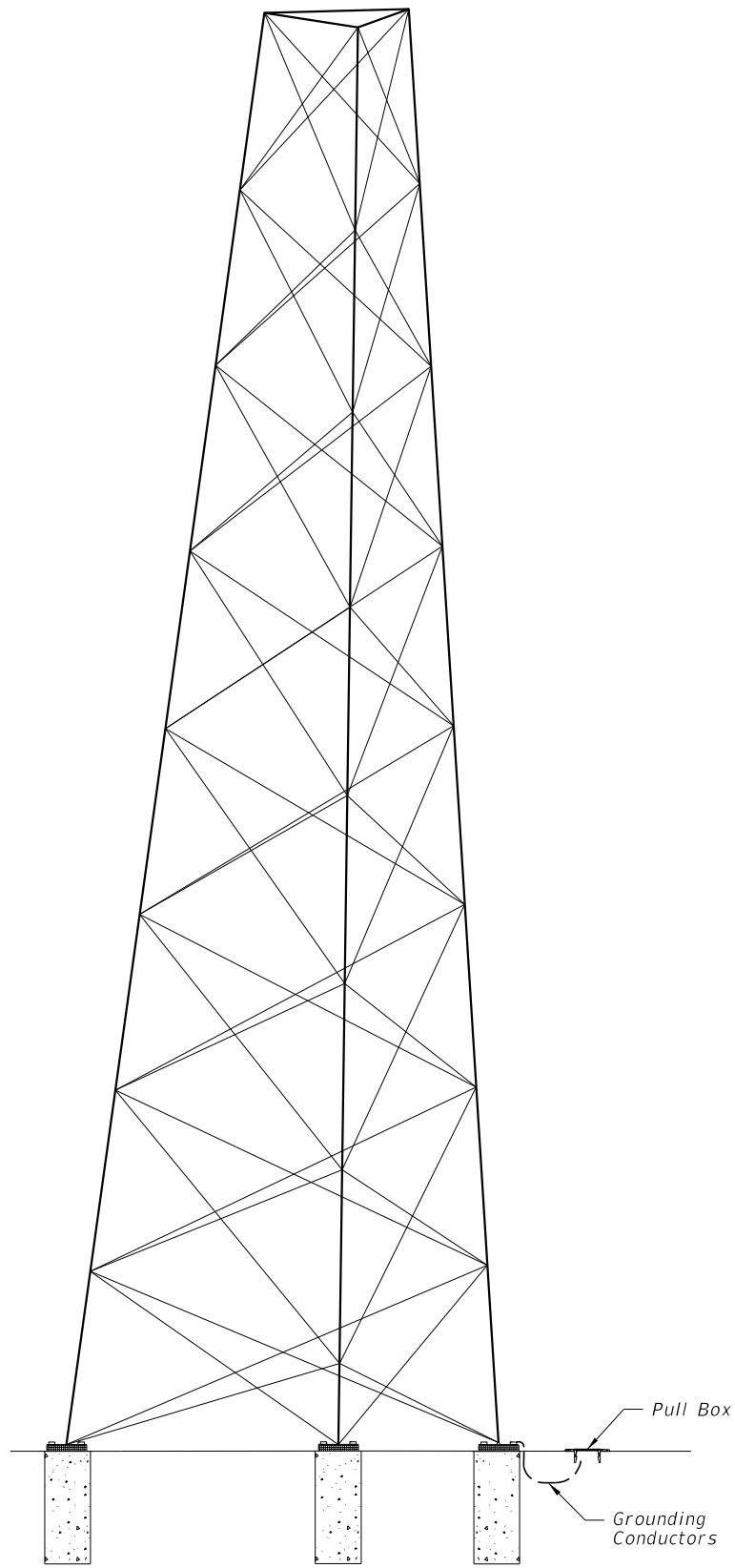
GROUND ROD ARRAY PLACEMENT
(Typical Modified)
20' RODS, 40' SPACING



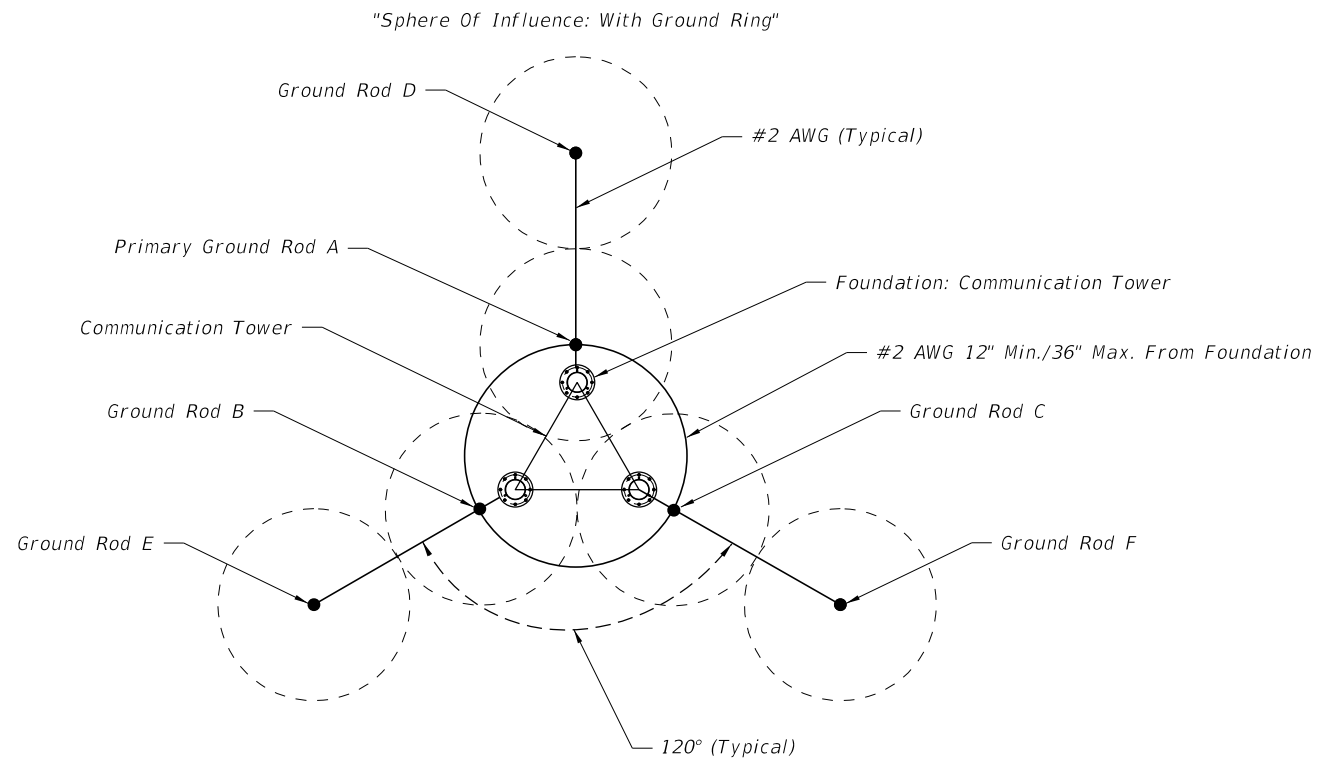
INSET "A"

6/10/2015 10:39:02 AM

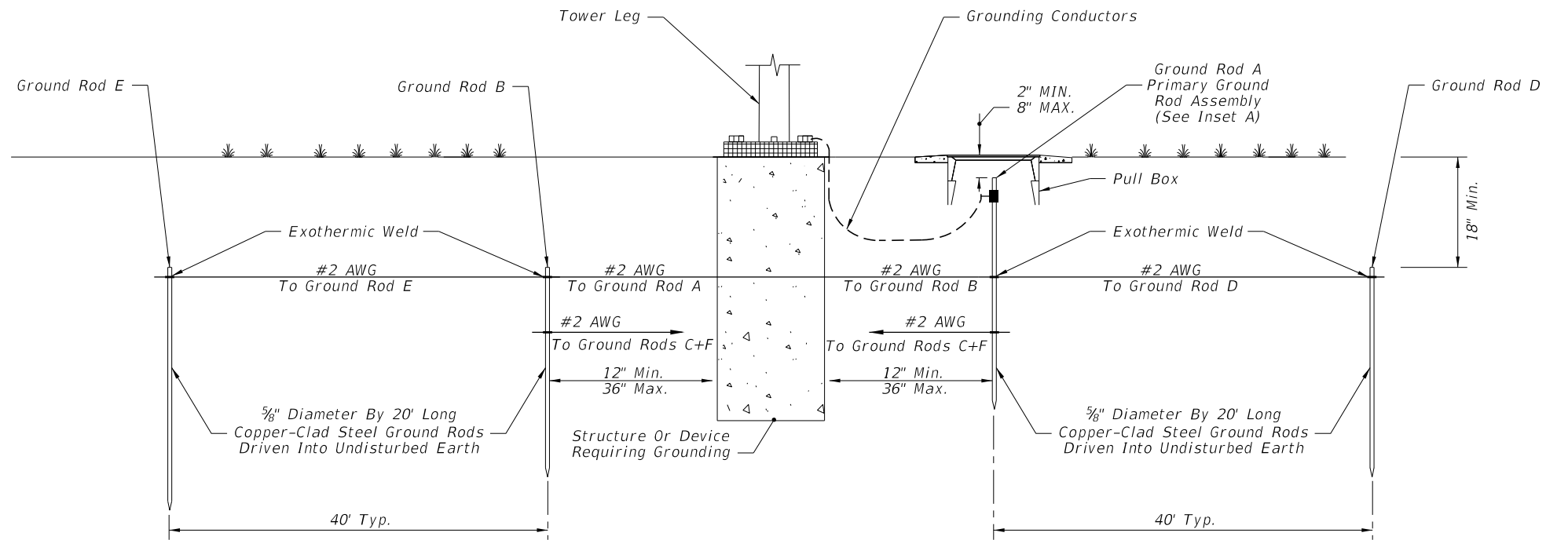
LAST REVISION 07/01/14	REVISION	DESCRIPTION:
---------------------------	----------	--------------



COMMUNICATION TOWER



GROUND ROD ARRAY PLACEMENT
(Communication Tower)
20' RODS, 40' SPACING



GROUND ROD ARRAY PROFILE
(Communication Tower)

6/10/2015 10:39:02 AM

LAST REVISION 07/01/14	REVISION	DESCRIPTION:
---------------------------	----------	--------------