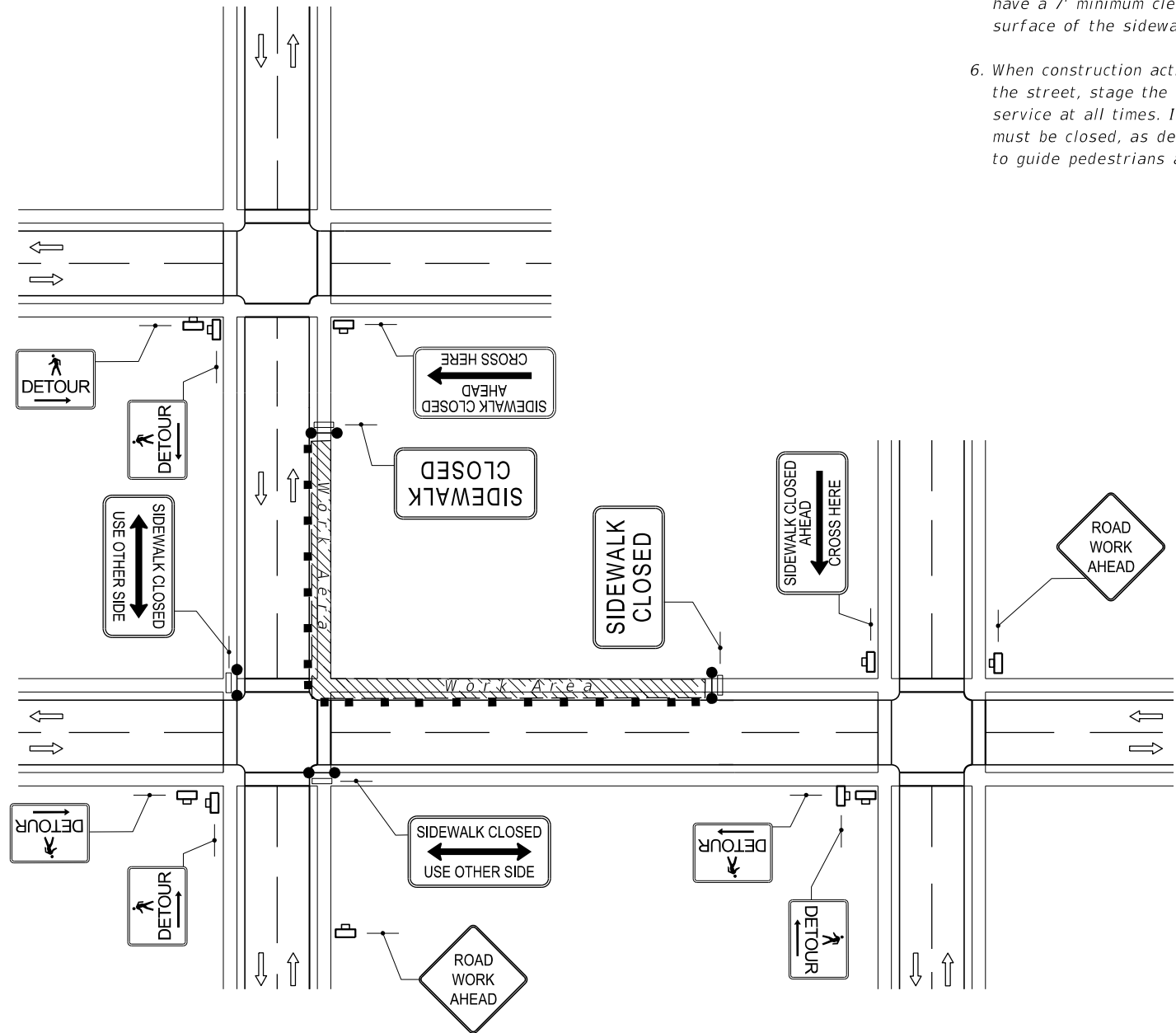


SYMBOLS

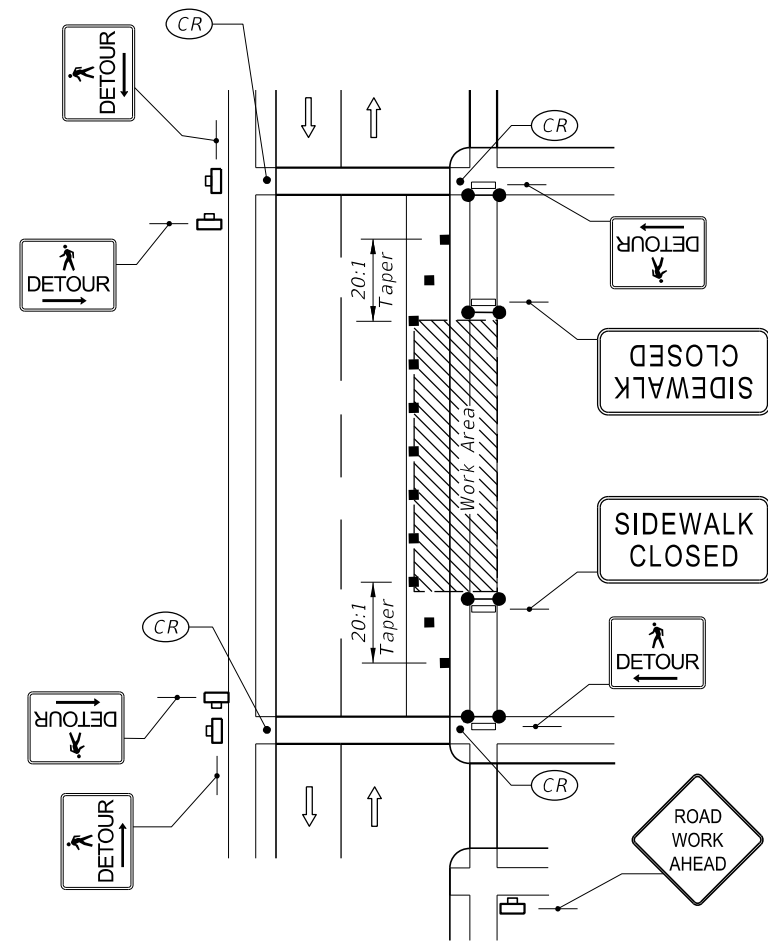
-  Work Area
-  Channelizing Device (See Index 600)
-  Work Zone Sign
-  Required Locations For Either Temporary Or Permanent Curb Ramps.
-  Lane Identification + Direction of Traffic
-  Pedestrian Longitudinal Channelizing Device (LCD) with Mounted Work Zone Sign
-  Pedestrian Longitudinal Channelizing Device (LCD)

GENERAL NOTES

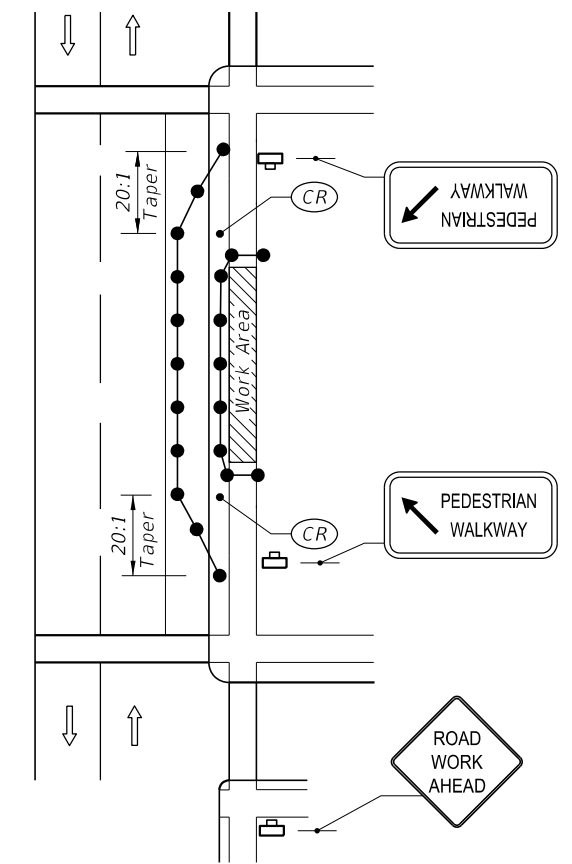
1. Route pedestrian traffic around work areas when construction activities encroach on the sidewalk for more than 60 minutes using the devices and remedies shown on this Index. Use project specific designs for scenarios not included on this Index.
2. For spacing of traffic control devices and general TCZ requirements refer to Index 600. The maximum spacing between barricades, vertical panels, drums or tubular markers is 25'.
3. Use delineators on longitudinal channelizing devices separating the work area from vehicular traffic.
4. Cover or deactivate pedestrian traffic signal display(s) controlling closed crosswalks.
5. Post mounted signs located near or adjacent to a sidewalk must have a 7' minimum clearance from the bottom of sign to the surface of the sidewalk.
6. When construction activities involve sidewalks on both sides of the street, stage the construction so that one sidewalk is in service at all times. If this is not feasible and both sidewalks must be closed, as determined by the Engineer, provide a detour to guide pedestrians around the construction zone.
7. Provide a 5' wide temporary walkway, except where space restrictions warrant a minimum width of 4'. Provide a 5' x 5' passing space for temporary walkways less than 5' in width at intervals not to exceed 200'.
8. Provide a cross-slope with a maximum value of 0.02 for all temporary walkways.
9. Temporary walkway surfaces and ramps must be stable, firm, slip resistant, and kept free of any obstructions and hazards such as holes, debris, mud, construction equipment and stored materials.
10. Remove temporary walkways immediately after reopening of the sidewalk, unless otherwise noted in the plans.
11. Meet the requirements of Index 304 for temporary curb ramps.
12. Place pedestrian longitudinal channelizing device(s) across the full width of the closed sidewalk. For temporary walkways, similar to the Sidewalk Diversion, place LCD's to delineate both sides of the temporary walkway.



CROSSWALK CLOSURE AND PESESTRIAN DETOUR




SIDEWALK DETOUR



SIDEWALK DIVERSION

6/16/2015 11:03:28 AM

LAST REVISION 07/01/15	REVISION	DESCRIPTION:	 2016 DESIGN STANDARDS	PEDESTRIAN CONTROL FOR CLOSURE OF SIDEWALKS	INDEX NO. 660	SHEET NO. 1 of 1
---------------------------	----------	--------------	--	--	-------------------------	----------------------------