

DISTANCE BETWEEN SIGNS				
Speed (mph)	Spacing (ft)			
	A	B	C	D
40 or less	200	200	200	100
45	350	350	350	175
50	500	500	500	250
55 or greater	2640	1640	1000	500

TABLE I DEVICE SPACING				
Speed (mph)	Max. Distance Between Devices (ft)			
	Cones or Tubular Markers		Type I or Type II Barricades or Vertical Panels or Drums	
	Taper	Tangent	Taper	Tangent
25 to 45	20	50	20	50
50 to 70	20	50	20	100

BUFFER SPACE	
Speed (mph)	Dist. (ft)
25	155
30	200
35	250
40	305
45	360
50	425
55	495
60	570
65	645
70	730

- * The ROAD WORK 1 MILE sign may be used as an alternate to the ROAD WORK AHEAD sign.
- ** 500' beyond the ROAD WORK AHEAD sign or midway between signs whichever is less.
- *** BE PREPARED TO STOP sign may be omitted for speeds of 45 MPH or less.

SYMBOLS

- Work Area
- Sign With 18" x 18" (Min.) Orange Flag And Type B Light
- Type I, Type II Or Type III Barricade Or Vertical Panel Or Drum
- Channelizing Device (See Index No. 600)
- Work Zone Sign
- Flagger
- Automated Flagger Assistance Devices (AFAD), With Gate
- Lane Identification + Direction of Traffic

GENERAL NOTES

1. Work operations shall be confined to one traffic lane, leaving the opposite lane open to traffic.
2. All vehicles, equipment, workers (except flaggers), and their activities are restricted to one side of the roadway.
3. Additional one-way control may be effected by the following means:
(1) Flag-carrying vehicle; (2) Official vehicle; (3) Pilot vehicles; (4) Traffic signals.

When flaggers are the sole means of one-way control the flaggers shall be in sight of each other or in direct communication at all times.
4. The ONE-LANE ROAD signs are to be fully covered and the FLAGGER signs either removed or fully covered when no work is being performed and the highway is open to two-way traffic.
5. When a side road intersects the highway within the TTC zone, additional TTC devices shall be placed in accordance with other applicable TCZ Indexes.

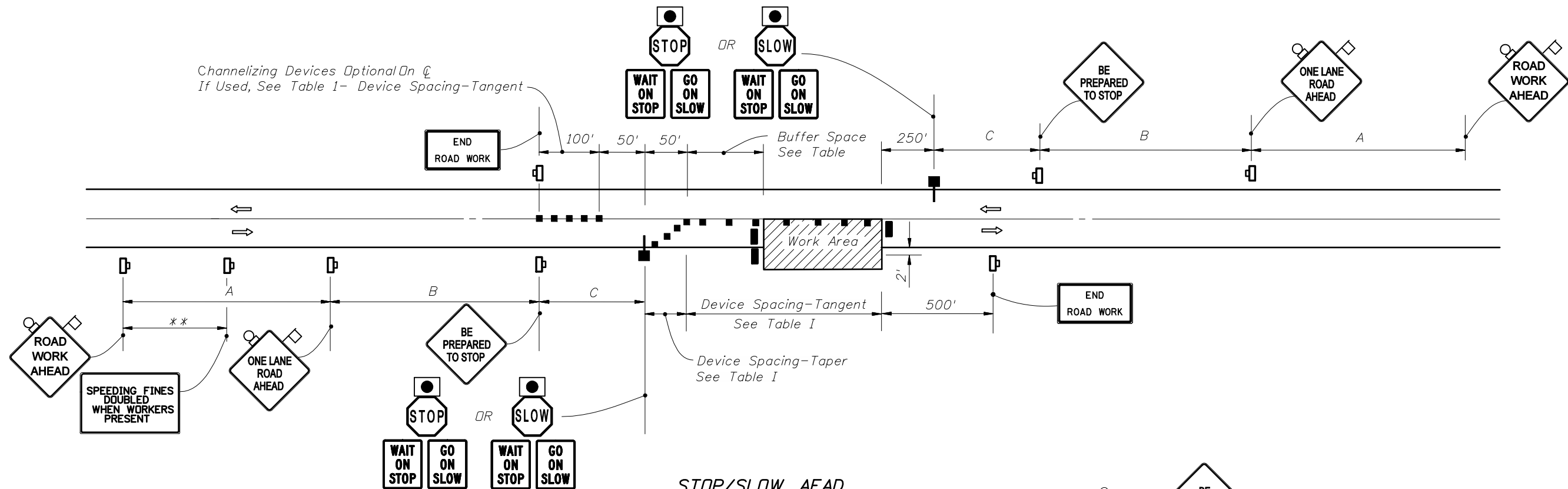
6. The two channelizing devices directly in front of the work area and the one channelizing device directly at the end of the work area may be omitted provided vehicles in the work area have high-intensity rotating, flashing, oscillating, or strobe lights operating.
7. For general TCZ requirements and additional information, refer to Index No. 600.

DURATION NOTES

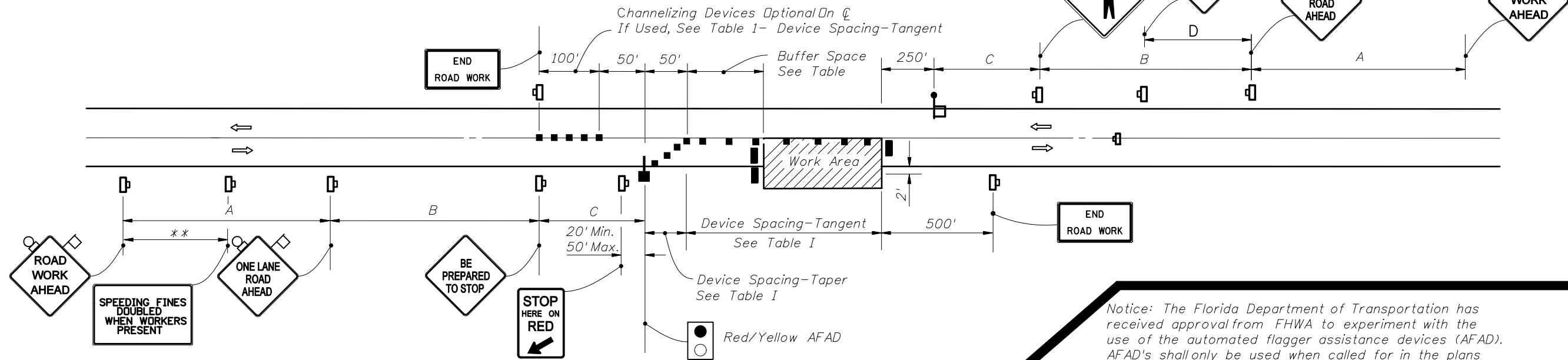
1. ROAD WORK AHEAD and the BE PREPARED TO STOP signs may be omitted if all of the following conditions are met:
 - a) Work operations are 60 minutes or less.
 - b) Speed limit is 45 mph or less.
 - c) No sight obstructions to vehicles approaching the work area for a distance equal to the buffer space.
 - d) Vehicles in the work area have high-intensity, rotating, flashing, oscillating, or strobe lights operating.
 - e) Volume and complexity of the roadway has been considered.

CONDITIONS

WHERE ANY VEHICLE, EQUIPMENT, WORKERS OR THEIR ACTIVITIES ENCRDACH THE AREA BETWEEN THE CENTERLINE AND A LINE 2' OUTSIDE THE EDGE OF TRAVEL WAY.



**STOP/SLOW AFAD
METHOD 1- 2 AFAD's**



**RED/YELLOW AFAD
METHOD 2- 1 AFAD AND A FLAGGER**

Notice: The Florida Department of Transportation has received approval from FHWA to experiment with the use of the automated flagger assistance devices (AFAD). AFAD's shall only be used when called for in the plans that include the appropriate pay item and developmental specification or approved by the State Roadway Design Office.

DISTANCE BETWEEN SIGNS				
Speed (mph)	Spacing (ft)			
	A	B	C	D
40 or less	200	200	200	100
45	350	350	350	175
50	500	500	500	250
55 or greater	2640	1640	1000	500

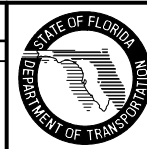
* (See Sheet 1 Notes)
** (See Sheet 1 Notes)

AUTOMATED FLAGGER ASSISTANCE DEVICES (AFAD)

1. When used at nighttime, the AFAD flagging station shall be illuminated.
2. When the AFAD is not in use, it shall be moved outside the clear zone or be shielded by a barrier or crash cushion and the signs associated with the AFAD shall be removed or covered.
3. Duration Notes show on sheet 1 of 2 do not apply when AFAD are used.

REVISIONS

DATE	BY	DESCRIPTION	DATE	BY	DESCRIPTION
06/27/06	CA	New sheet 2 with details for Automated Flagger Assistance Device (AFAD).			



2006 Interim Design Standard

TWO-LANE TWO-WAY, WORK WITHIN THE TRAVEL WAY

Interim Date: 07/01/06
Sheet No.: 2 of 2
Index No.: 603