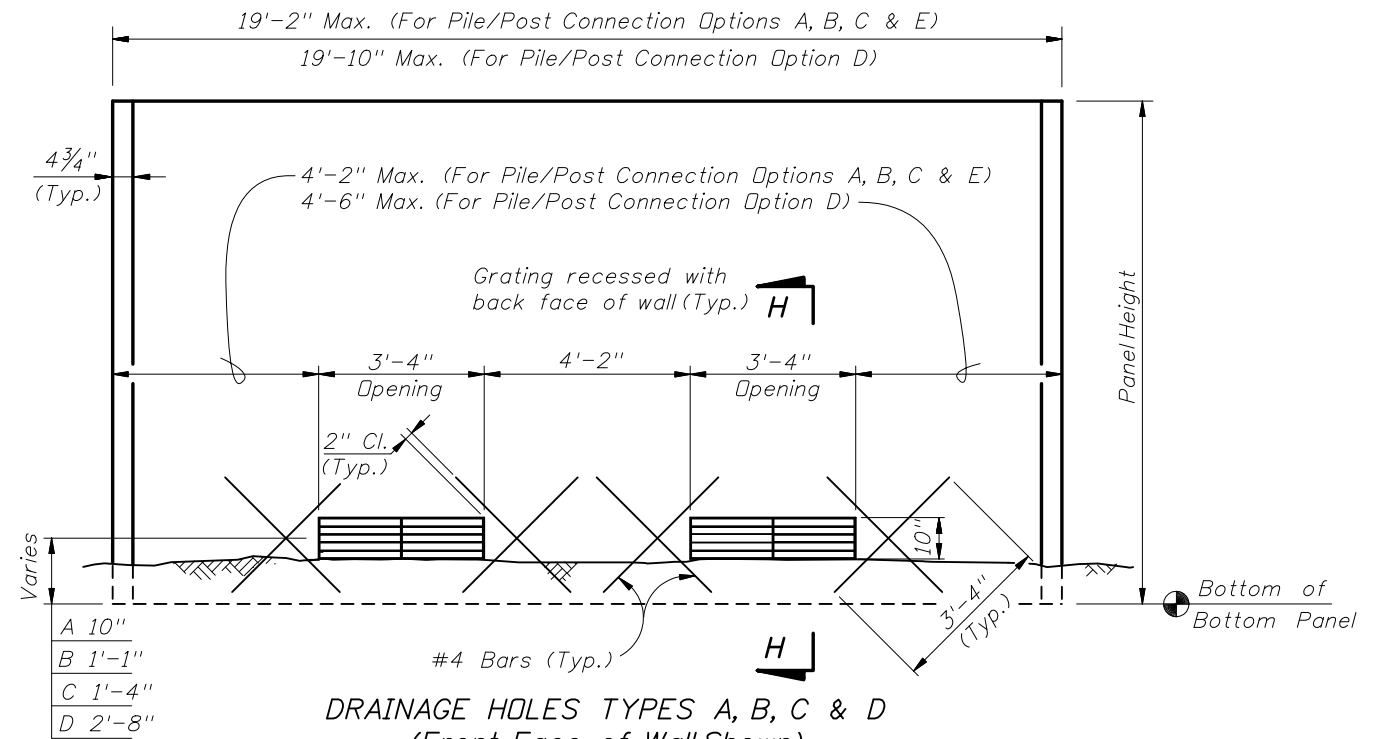


FIRE HOSE ACCESS HOLE TYPICAL DETAIL
(Front Face of Wall Shown)
(Flush Panel Option Shown)
Recessed Panel Option Similar)

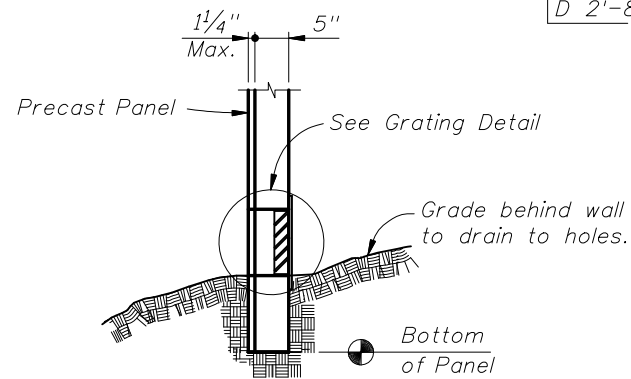
NOTE: Fire Hose Access Point to be located at or near fire hydrants



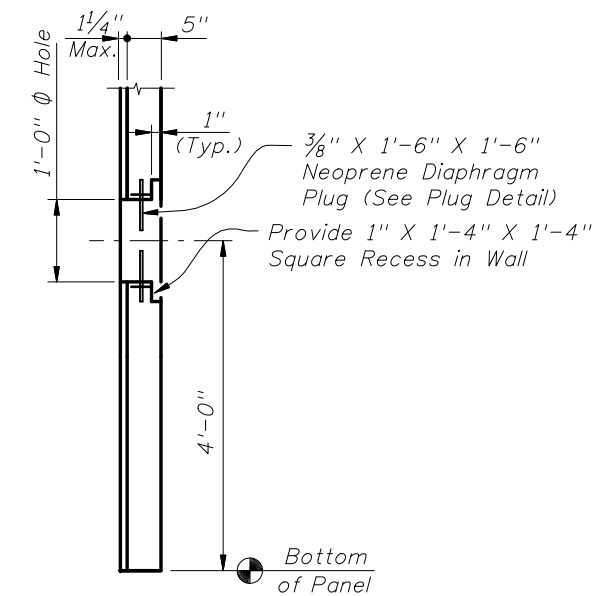
DRAINAGE HOLES TYPES A, B, C & D
(Front Face of Wall Shown)
(Flush Panel Option Shown)
Recessed Panel Option Similar)

NOTE: Place double mat of welded wire reinforcement in bottom 5'-0" of panels with drainage holes. Hole Types A, B, C and D refer to distance from bottom of panel to center of opening. See Wall Control Drawings.

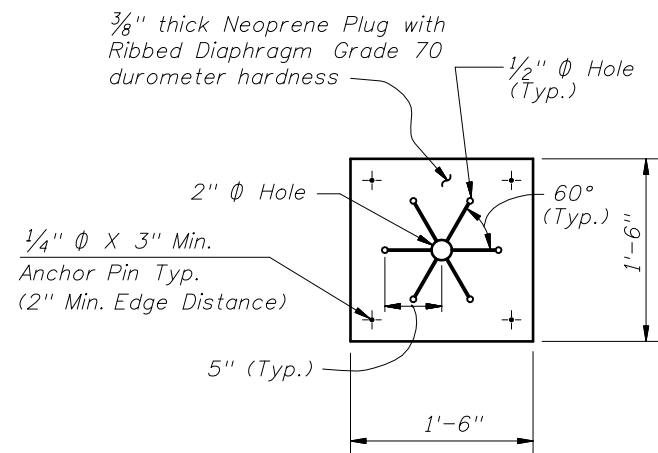
A	10"
B	1'-1"
C	1'-4"
D	2'-8"



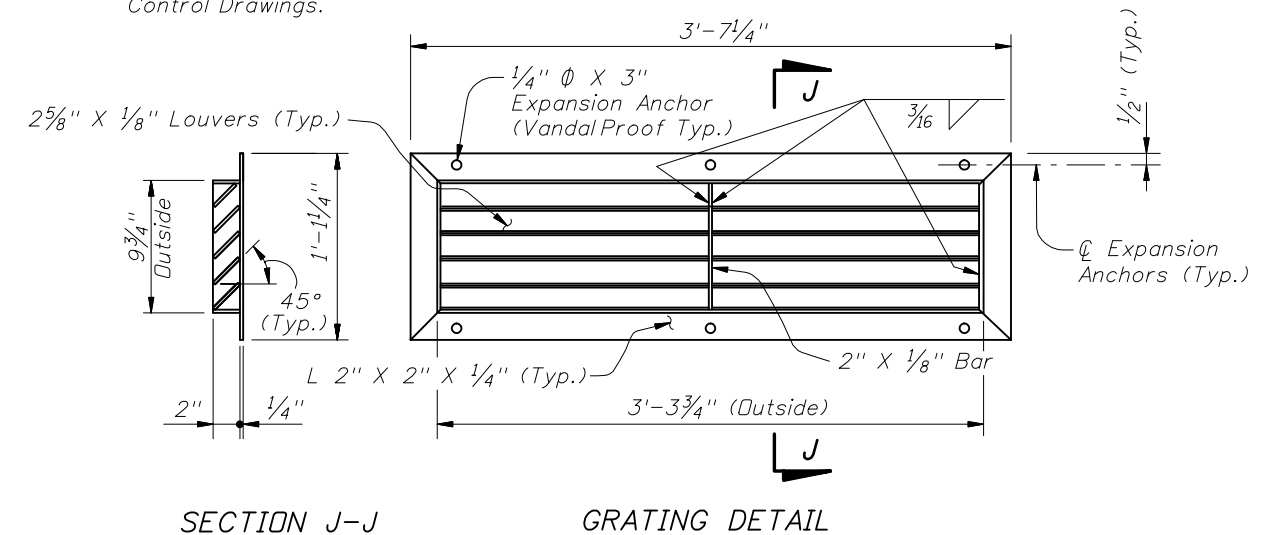
SECTION H-H
(Flush Panel Option Shown)
Recessed Panel Option Similar)



SECTION G-G
(Flush Panel Option Shown)
Recessed Panel Option Similar)



PLUG DETAIL

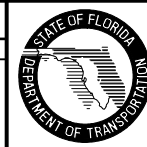


SECTION J-J GRATING DETAIL

NOTES:
Grating shall be ASTM A 36 steel and shall be hot dip galvanized after assembly in accordance with ASTM Specification A 123.
Expansion anchors shall be in accordance with ASTM A 307 (Galvanized).
Welding shall be in accordance with the current edition of the ANSI/AWS D1.1 Welding Code.

REVISIONS

DATE	BY	DESCRIPTION	DATE	BY	DESCRIPTION
01/01/07	SJN	Corrected outside dimensions of grating in GRATING DETAIL. Added 1/2" edge distance to Expansion Anchors in GRATING DETAIL and "Opening" to 3'-4" dimension in DRAINAGE HOLE TYPES detail. Changed "welded steel wire fabric" to			"welded wire reinforcement".



2006 Interim Design Standard

PRECAST SOUND BARRIERS - FIRE HOSE ACCESS HOLE & DRAINAGE DETAILS

Interim Date	Sheet No.
01/01/07	1 of 1
Index No.	
5204	