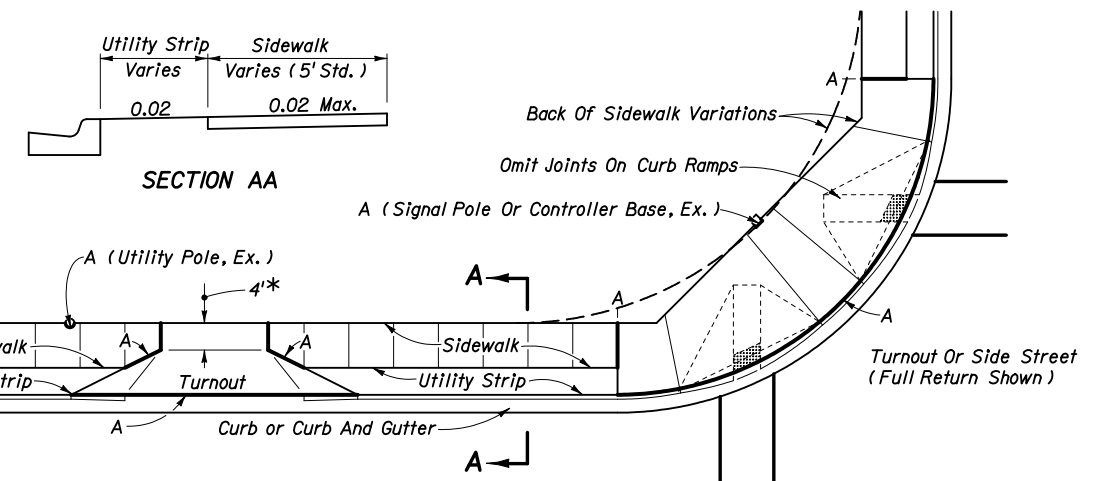
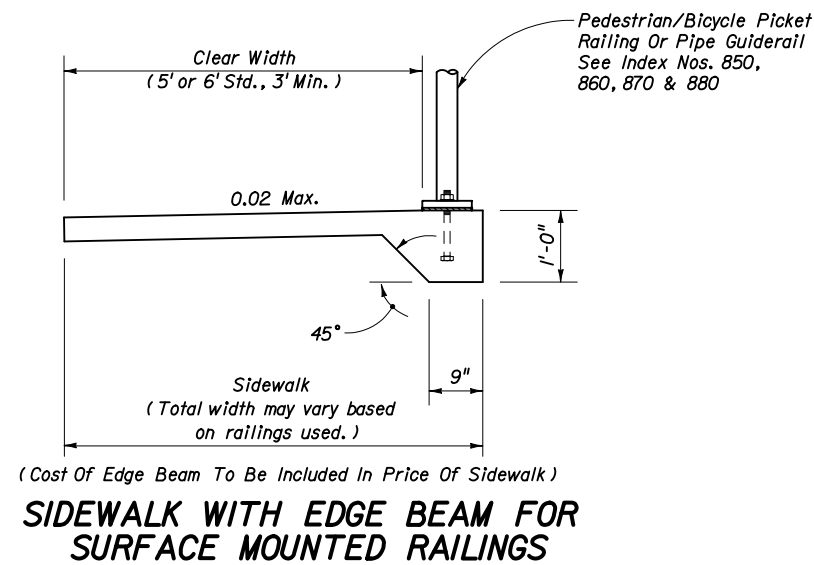


#### JOINT LEGEND

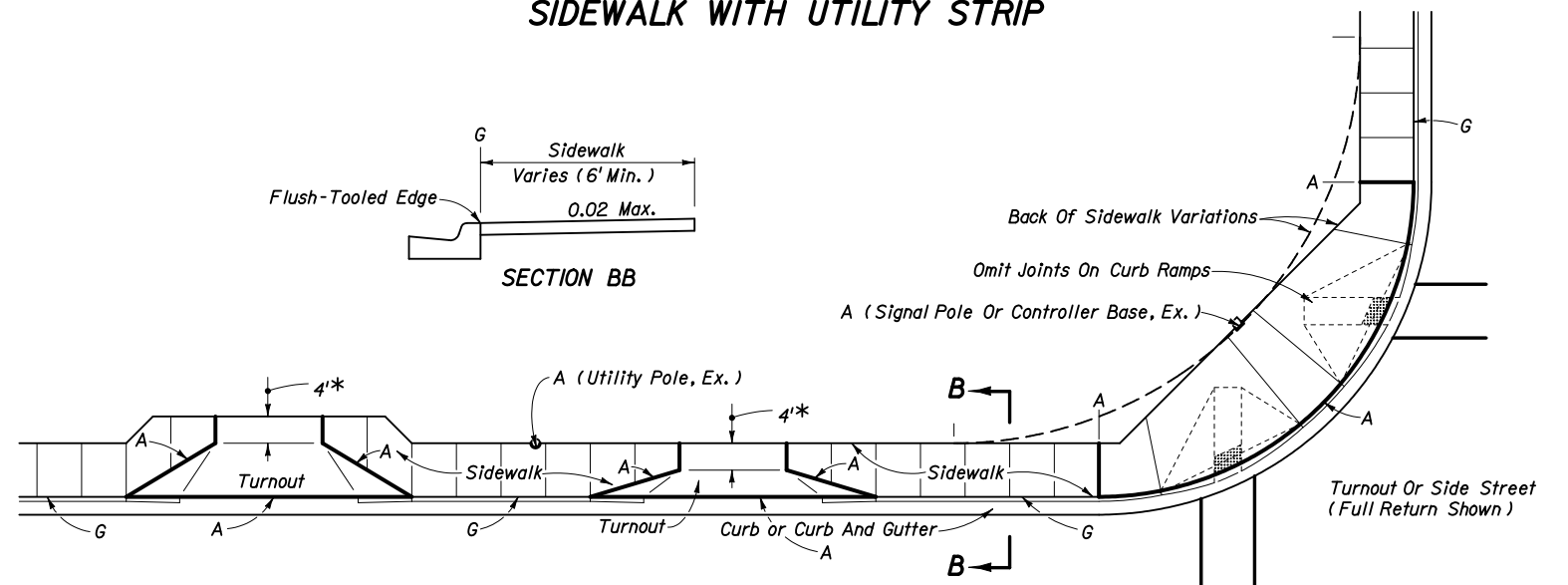
- A-  $\frac{1}{2}$ " Expansion Joints (Preformed Joint Filler)
- B-  $\frac{1}{8}$ " Dummy Joints, Tooled
- C-  $\frac{1}{8}$ " Formed Open Joints
- D-  $\frac{3}{16}$ " Saw Cut Joints,  $1\frac{1}{2}$ " Deep (96 Hour) Max. 5' Centers
- E-  $\frac{3}{16}$ " Saw Cut Joints,  $1\frac{1}{2}$ " Deep (12 Hour) Max. 30' Centers
- F-  $\frac{1}{2}$ " Expansion Joint When Run Of Sidewalk Exceeds 120'. Intermediate locations when called for in the plans or at locations as directed by the Engineer.
- G- Cold Joint With Bond Breaker, Tooled

#### NOTES FOR CONCRETE SIDEWALK ON CURBED ROADWAYS

1. Sidewalks shall be constructed in accordance with Section 522 of the FDOT Standard Specifications except for public sidewalk curb ramp runs which shall be finished in accordance with Index No. 304.
2. Bond breaker material can be any impermeable coated or sheet membrane or preformed material having a thickness of not less than 6 mils nor more than  $\frac{1}{2}$ ".
3. For public sidewalk curb ramps see Index No. 304.
4. For turnouts see Index No. 515.
5. Construct sidewalks with 1' thick Edge Beam through the limits of any surface mounted Pedestrian/Bicycle Picket Railing or Pipe Guiderail shown in the plans.
6. Sidewalk shall be paid for under the contract unit price for Sidewalk Concrete (\_\_\_ Thick), S.Y.



#### SIDEWALK WITH UTILITY STRIP



#### SIDEWALK WITHOUT UTILITY STRIP

\* 4', May Be Reduced To 3' In Restricted Conditions When Approved By The Engineer

## CONCRETE SIDEWALK FOR CURBED ROADWAYS



2006 Interim Design Standard

CONCRETE SIDEWALK

Interim  
Date

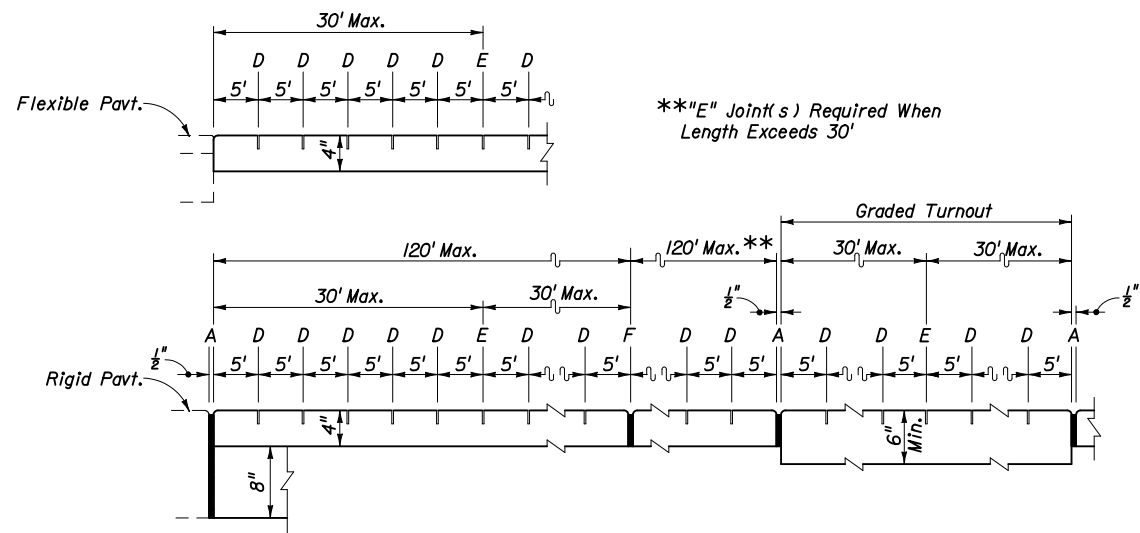
01/01/07

Sheet No.

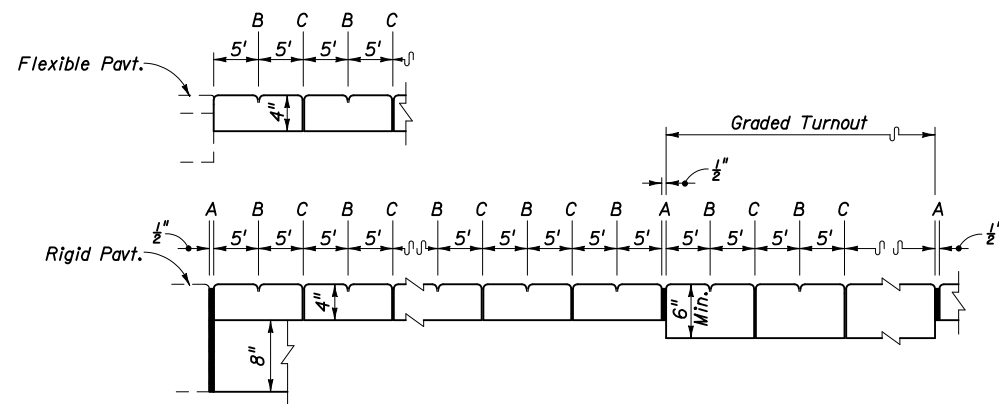
1 of 2

Index No.

310



SAWED JOINTS



OPEN JOINTS

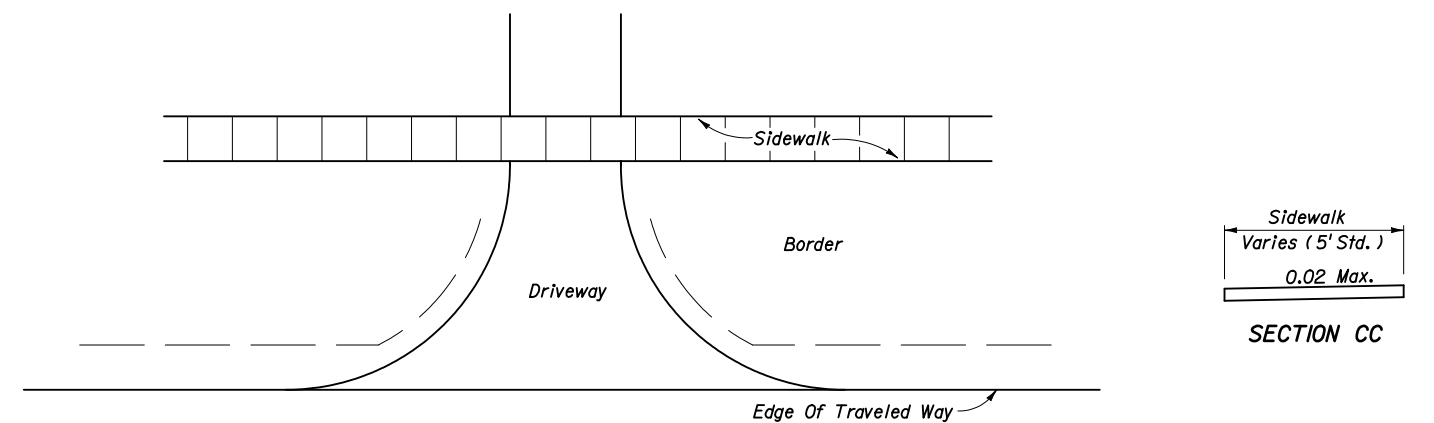
EXAGGERATED SCALE  
LONGITUDINAL SECTIONS  
SIDEWALK JOINTS

JOINT LEGEND

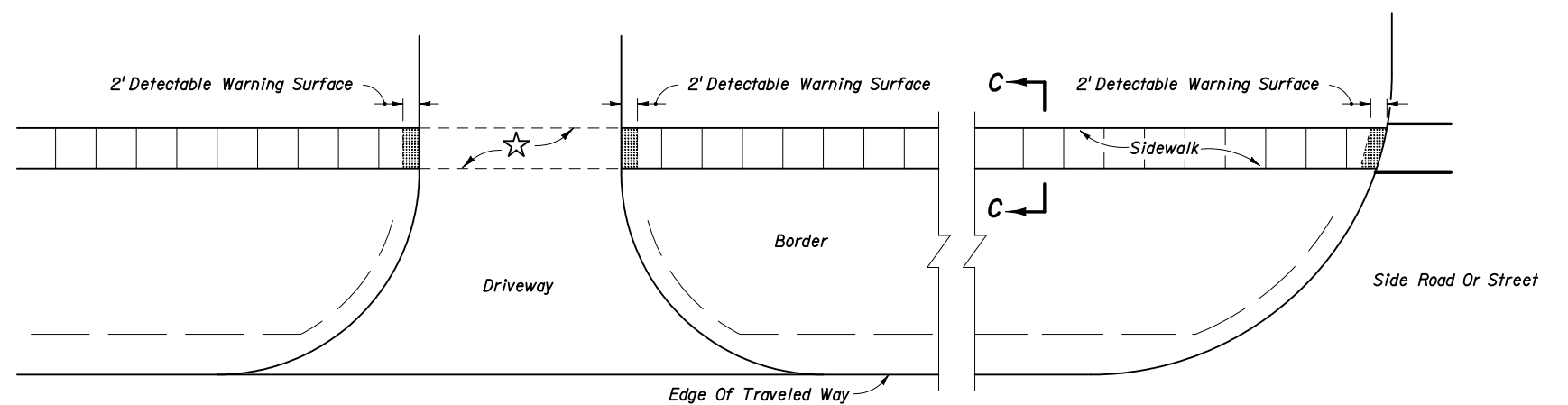
- A -  $\frac{1}{2}$ " Expansion Joints (Preformed Joint Filler)
- B -  $\frac{1}{8}$ " Dummy Joints, Tooled
- C -  $\frac{1}{8}$ " Formed Open Joints
- D -  $\frac{3}{16}$ " Saw Cut Joints,  $1\frac{1}{2}$ " Deep (96 Hour) Max. 5' Centers
- E -  $\frac{3}{16}$ " Saw Cut Joints,  $1\frac{1}{2}$ " Deep (12 Hour) Max. 30' Centers
- F -  $\frac{1}{2}$ " Expansion Joint When Run Of Sidewalk Exceeds 120'. Intermediate locations when called for in the plans or at locations as directed by the Engineer.

# NOTES FOR CONCRETE SIDEWALKS ON UNCURBED ROADWAYS

- Sidewalks shall be constructed in accordance with Section 522 of the FDOT Standard Specifications.
- Sidewalks adjoining driveways 24' and wider, right in-right out composite driveways and side roads and streets shall have a detectable warning surface that extends the full width of the sidewalk and 24" (610 mm) from the edge of driveways and edge of side roads and streets. Detectable warning surfaces shall conform to the requirements described in the General Notes on Index No. 304.  
  
For sidewalks continuous through driveways, detectable warning surfaces are not required.
- For turnouts see Index No. 515.
- Construct sidewalks with 1' thick Edge Beam through the limits of any surface mounted Pedestrian/Bicycle Picket Railing or Pipe Guiderail shown in the plans. See Sheet 1 for details.
- Sidewalk shall be paid for under the contract unit price for Sidewalk Concrete ( \_\_\_ Thick ), SY.



CONTINUOUS SIDEWALK



☆ When driveway is new construction, reconstruction, or altered, cross slope within this area shall not exceed 0.02. Existing driveways that are not being altered may be left as they are.

DISCONTINUOUS SIDEWALK

PLAN

## CONCRETE SIDEWALK FOR UNCURBED ROADWAYS



2006 Interim Design Standard

CONCRETE SIDEWALK

Interim Date 01/01/07  
Sheet No. 2 of 2  
Index No. 310