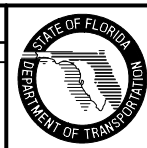


**DETAIL "B" (SHOWING THREADED BAR LOCATION/RELATIONSHIP TO PILE PRESTRESSING STRANDS)**

**SECTION D-D  
TYPICAL AT INTERMEDIATE PILES**

**SECTION C-C  
TYPICAL STRAIGHT SECTION**

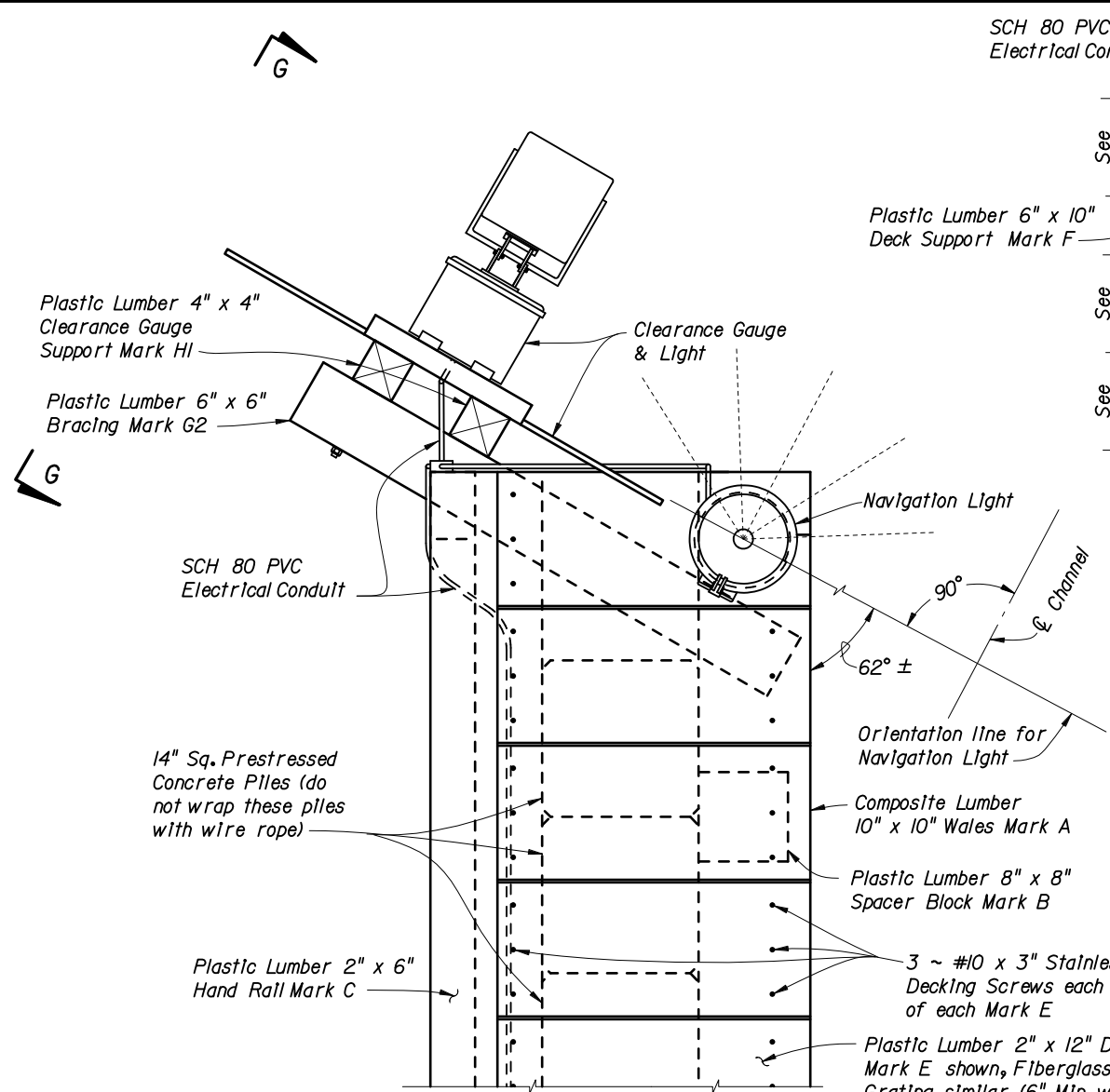
| REVISIONS |     |                            |  |
|-----------|-----|----------------------------|--|
| DATE      | BY  | DESCRIPTION                |  |
| 01/01/06  | SDO | New Design Standard Issued |  |



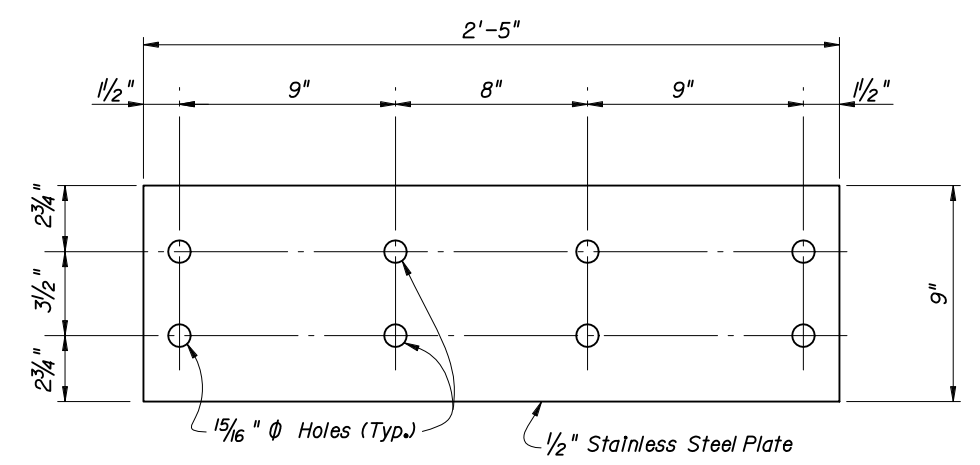
2006 Interim Design Standard

**FENDER SYSTEM - LIGHT DUTY**

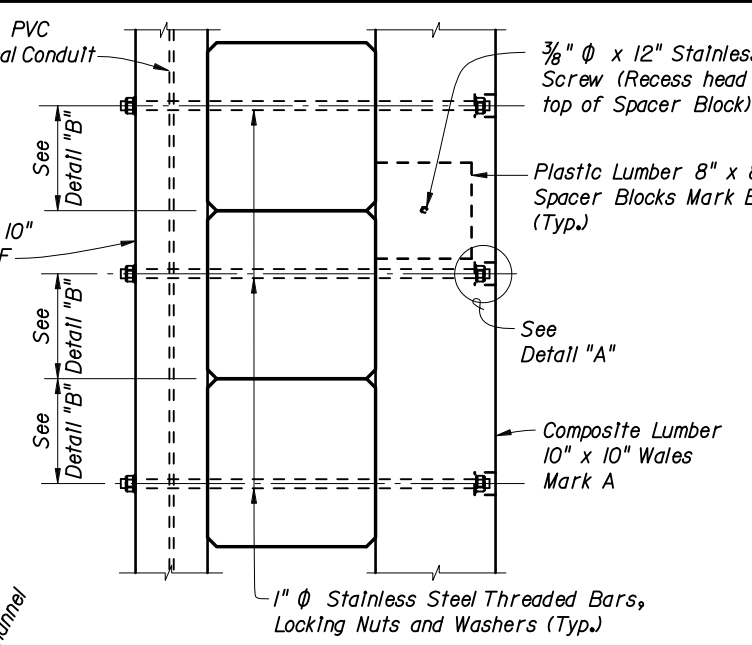
Interim Date: 01/01/06  
 Sheet No.: 2 of 5  
 Index No.: 21930



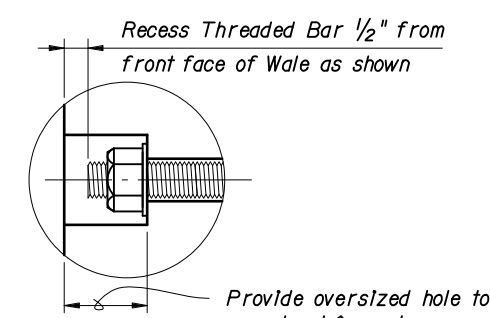
**VIEW F-F  
(SHOWING FENDER END WITH CLEARANCE GAUGE)**



**SPLICE PLATE DETAIL**

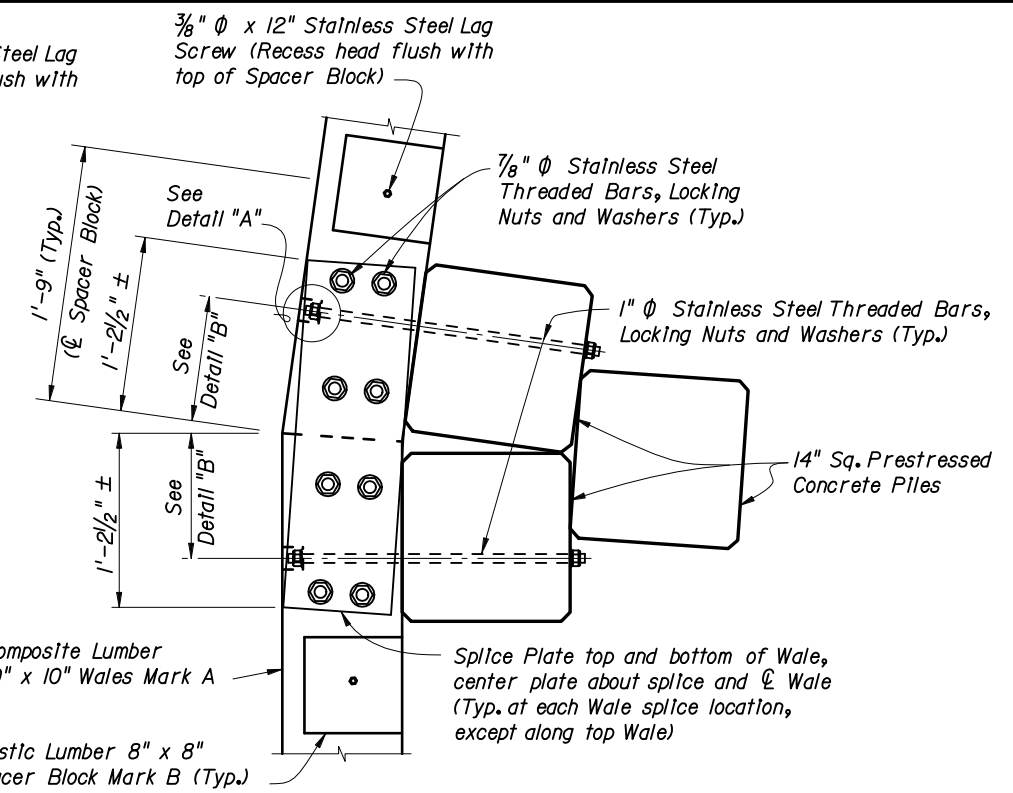


**PARTIAL VIEW F-F  
(SHOWING FENDER END; DECKING  
AND HANDRAIL NOT SHOWN  
FOR CLARITY)**

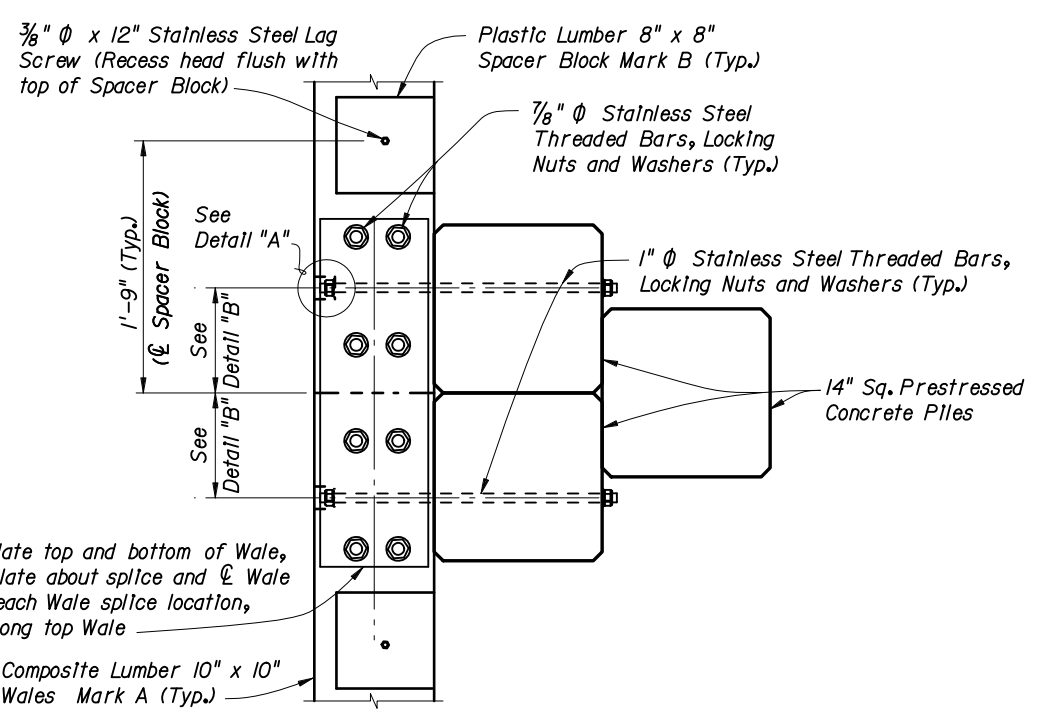


**DETAIL "A"**

**CROSS REFERENCES:**  
 For Navigation Lights and SCH 80 PVC Electrical Conduit Details see Design Standard Index 21220.  
 For View G-G and Clearance Gauge Details see Sheet 4.  
 For Detail "B" and location of Section E-E see Sheet 2.  
 For location of View F-F see Sheet 1.

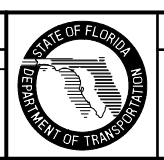


**SECTION E-E  
TYPICAL FLARED SECTION  
(8° TURN SHOWN, 4° TURN SIMILAR)**



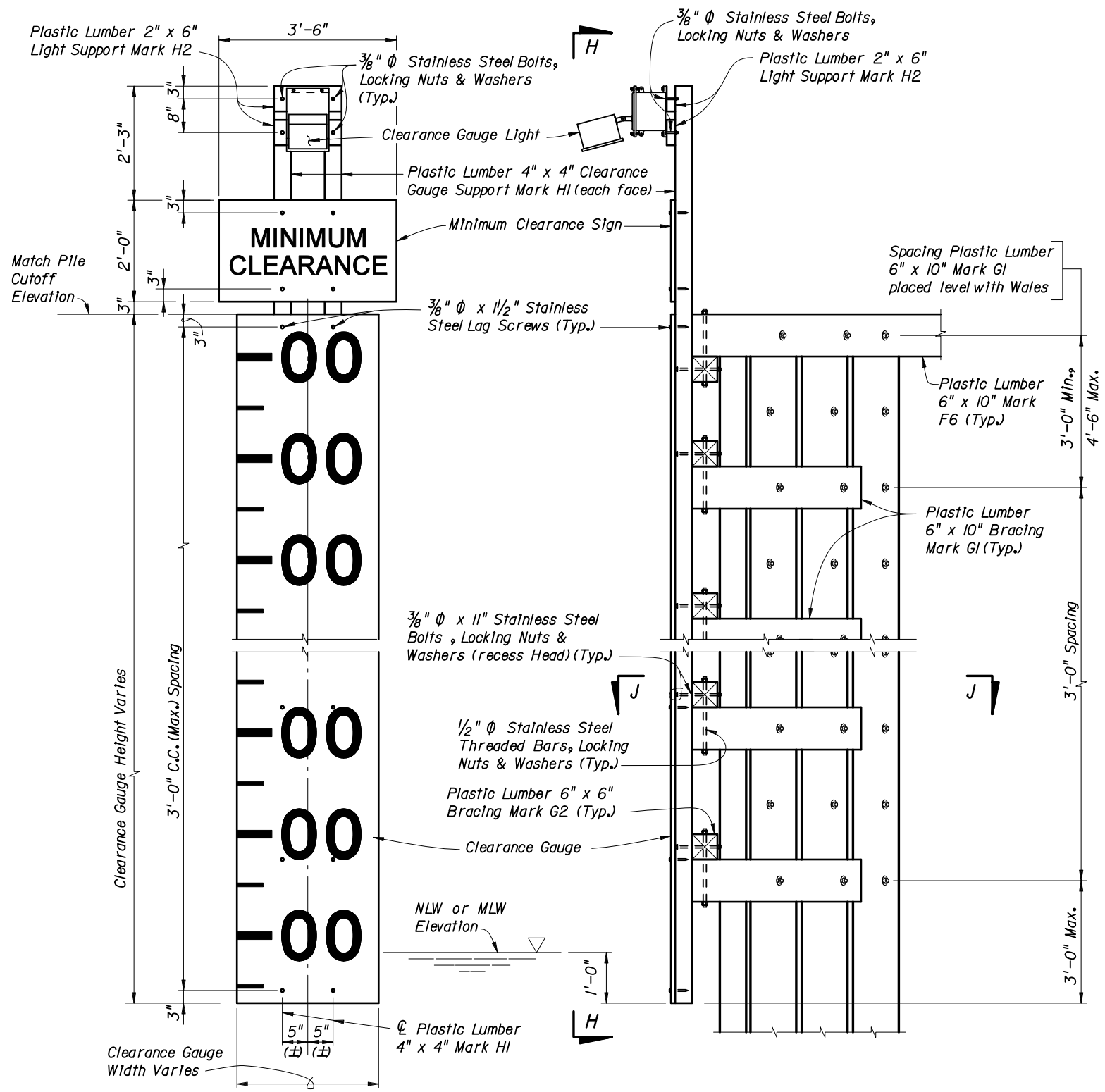
**SECTION E-E  
TYPICAL STRAIGHT SECTION**

| REVISIONS |     |                            |  |
|-----------|-----|----------------------------|--|
| DATE      | BY  | DESCRIPTION                |  |
| 01/01/06  | SDO | New Design Standard Issued |  |



2006 Interim Design Standard  
**FENDER SYSTEM - LIGHT DUTY**

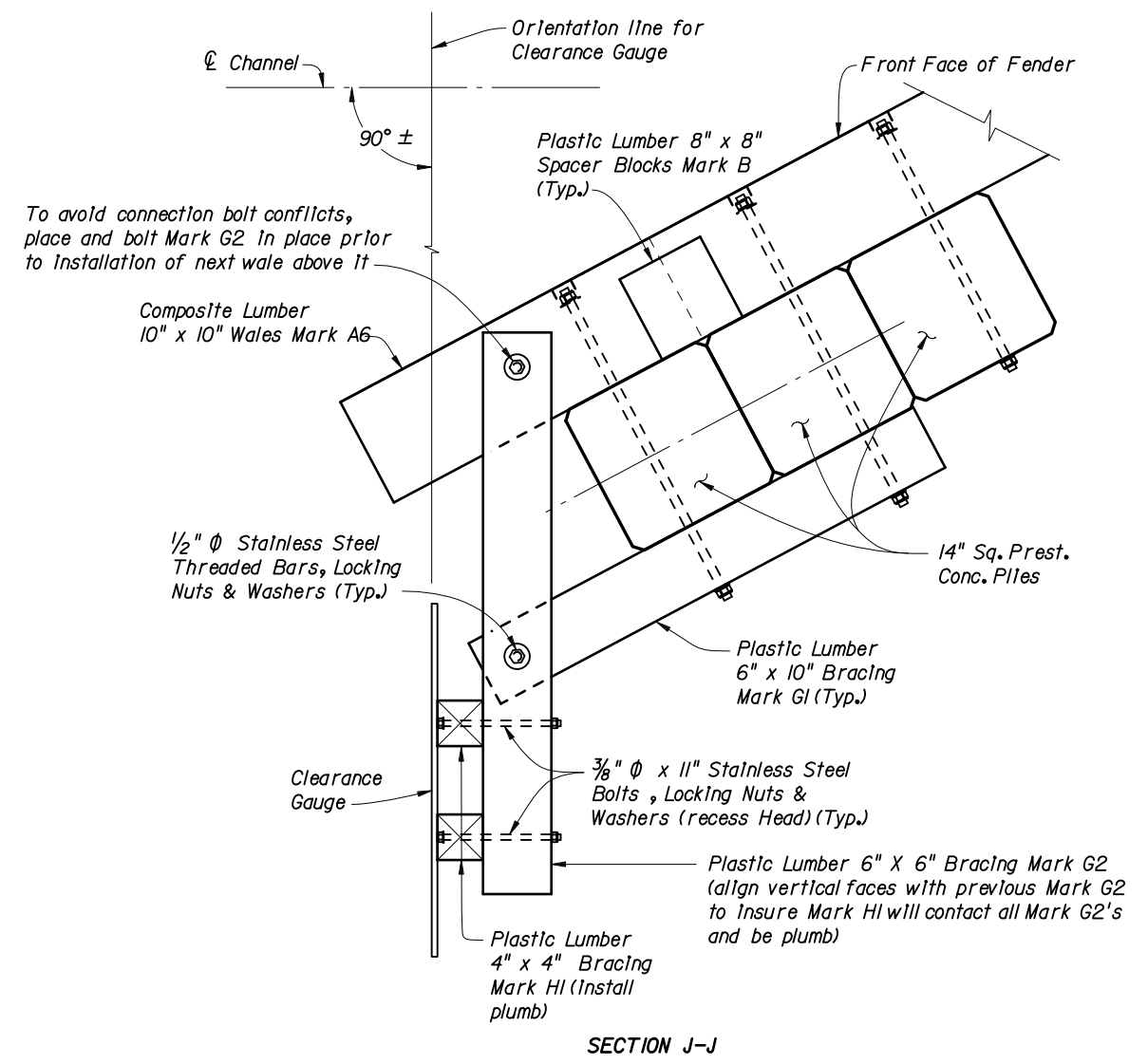
Interim Date: 01/01/06  
 Sheet No.: 3 of 5  
 Index No.: 21930



VIEW H-H  
(WALES, PILES AND BRACING  
NOT SHOWN FOR CLARITY)

VIEW G-G  
(WALES, DECKING AND HANDRAIL  
NOT SHOWN FOR CLARITY)

**CLEARANCE GAUGE DETAILS**



SECTION J-J

CROSS REFERENCES:  
For Estimated Structural Composite and Plastic Lumber Bill of Materials Quantities and Fender System Table of Variables see Structures Plans.  
For location of View G-G see Sheet 3.

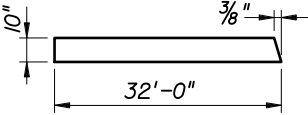
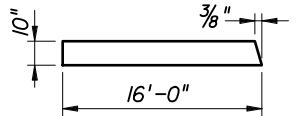
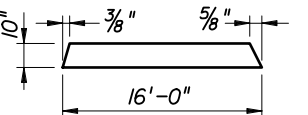
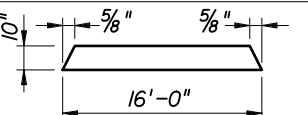
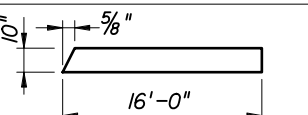
| REVISIONS |     |                            |      |    |             |
|-----------|-----|----------------------------|------|----|-------------|
| DATE      | BY  | DESCRIPTION                | DATE | BY | DESCRIPTION |
| 01/01/06  | SDO | New Design Standard Issued |      |    |             |

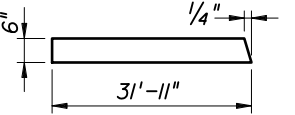
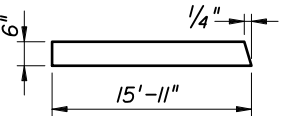
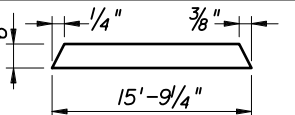
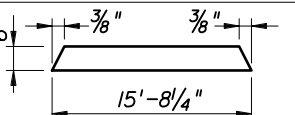
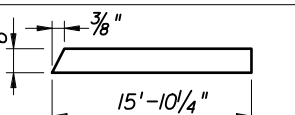


2006 Interim Design Standard

**FENDER SYSTEM - LIGHT DUTY**

|                           |                     |
|---------------------------|---------------------|
| Interim Date<br>01/01/06  | Sheet No.<br>4 of 5 |
| Index No.<br><b>21930</b> |                     |

| * STRUCTURAL COMPOSITE LUMBER BILL OF MATERIALS |                            |   |                    |   |          |
|---|----------------------------|---|--------------------|---|----------|
| MARK  | SIZE (NOMINAL)             | DIMENSIONS  | BOARD FT. PER EACH | NO. REQ'D.  | QUANTITY |
| A1  | 10" X 10" COMPOSITE LUMBER | 32'-0" (STRAIGHT)   | 266.6              | See Estimated Structural Composite and Plastic Lumber Bill of Materials Table In Structures Plans |          |
| A2  | 10" X 10" COMPOSITE LUMBER |  | 266.6              |   |          |
| A3  | 10" X 10" COMPOSITE LUMBER |  | 133.3              |   |          |
| A4  | 10" X 10" COMPOSITE LUMBER |  | 133.3              |   |          |
| A5  | 10" X 10" COMPOSITE LUMBER |  | 133.3              |   |          |
| A6  | 10" X 10" COMPOSITE LUMBER |  | 133.3              |   |          |

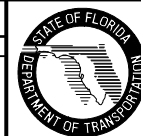
| * PLASTIC LUMBER BILL OF MATERIALS |                         |   |                    |   |          |
|------------------------------------|-------------------------|---|--------------------|---|----------|
| MARK                               | SIZE (NOMINAL)          | DIMENSIONS  | BOARD FT. PER EACH | NO. REQ'D.  | QUANTITY |
| B                                  | 8" X 8" PLASTIC LUMBER  | 8" (STRAIGHT)   | 3.6                | See Estimated Structural Composite and Plastic Lumber Bill of Materials Table In Structures Plans |          |
| C                                  | 2" X 6" PLASTIC LUMBER  | 16'-0" (STRAIGHT)<br>(Trim & Miter Ends as required)                                  | 16.0               |   |          |
| D                                  | 4" X 6" PLASTIC LUMBER  | 4'-4" (STRAIGHT)  | 8.7                |   |          |
| ** E                               | 2" X 12" PLASTIC LUMBER | 2'-6" (STRAIGHT)<br>(Miter as required, 6" min. width)                                | 5.0                |   |          |
| F1                                 | 6" X 10" PLASTIC LUMBER | 32'-0" (STRAIGHT)   | 160.0              |   |          |
| F2                                 | 6" X 10" PLASTIC LUMBER |    | 159.6              |   |          |
| F3                                 | 6" X 10" PLASTIC LUMBER |    | 79.6               |   |          |
| F4                                 | 6" X 10" PLASTIC LUMBER |    | 78.8               |   |          |
| F5                                 | 6" X 10" PLASTIC LUMBER |   | 78.4               |   |          |
| F6                                 | 6" X 10" PLASTIC LUMBER |  | 79.3               |   |          |
| G1                                 | 6" X 10" PLASTIC LUMBER | 3'-8" (STRAIGHT)  | 18.3               |   |          |
| G2                                 | 6" X 6" PLASTIC LUMBER  | 4'-1" (STRAIGHT)  | 12.3               |   |          |
| H1                                 | 4" X 4" PLASTIC LUMBER  | PILE CUTOFF ELEV. MINUS NLW OR MLW ELEV. PLUS 5'-6" (STRAIGHT)                        | 1.3 PER L.F. EACH  |   |          |
| H2                                 | 2" X 6" PLASTIC LUMBER  | 1'-2" (STRAIGHT)  | 1.2                |   |          |

\* All Plastic Lumber and Composite Lumber Dimensions and Quantities shown are based on Nominal Lumber Dimensions and may vary depending on Actual Lumber Dimension.

\*\* Provide Fiberglass Open Grating In lieu of 2" X 12" Plastic Lumber when called for In the Plans. Mounting hardware shall be Stainless Steel, Install per Manufacturer's recommendations. See Index No. 21900 and Structures Plans for Notes and Details.

REVISIONS

| DATE     | BY  | DESCRIPTION                | DATE | BY | DESCRIPTION |
|----------|-----|----------------------------|------|----|-------------|
| 01/01/06 | SDO | New Design Standard Issued |      |    |             |



2006 Interim Design Standard

FENDER SYSTEM - LIGHT DUTY

|              |           |
|--------------|-----------|
| Interim Date | Sheet No. |
| 01/01/06     | 5 of 5    |
| Index No.    |           |
| 21930        |           |