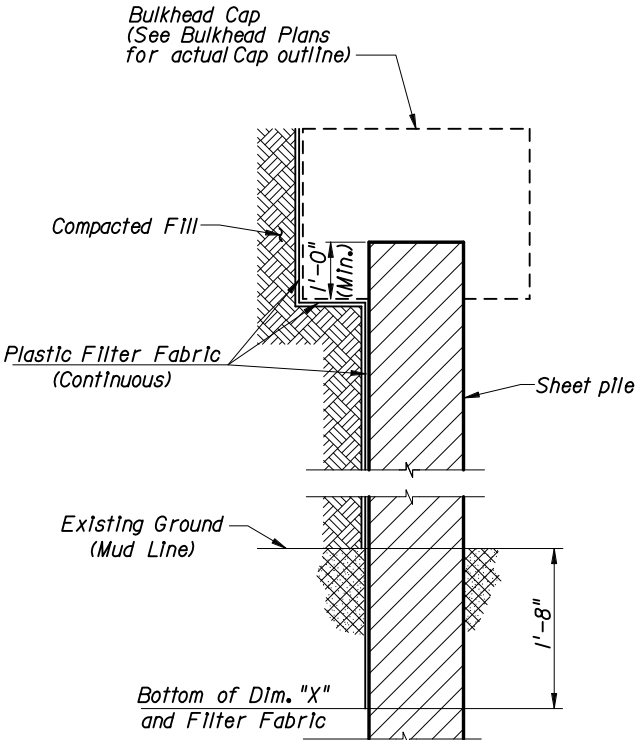


SHEET PILE DESIGN CRITERIA AND NOTES

**INSTRUCTION TO DESIGNER:**  
 The bottom of the "X" dimension shall be 1'-8" below the mud line.  
 The tip elevation of Concrete Sheet Piles shall be determined by the Geotechnical Engineer.

**CROSS REFERENCES:**  
 For Dimensions L and X see Sheet Pile Data Table in Structures Plans.



**SECTION THRU BULKHEAD**  
 (Showing Plastic Filter Fabric)

**DESCRIPTION:**  
 Standard drawings Indices Series No. 20400 include details for three types of piles with two thicknesses. Types "B" and "C" piles (corner piles) are of reinforced concrete construction, and Type "A" is of prestressed concrete construction. The piles shall be manufactured, cured and installed in accordance with the requirements of the contract documents.

**MATERIALS:** (for materials not listed refer to the Specifications)  
**CONCRETE**  
 Class: V (Special) for slightly and moderately aggressive environments  
 V (Special w/ Silica Fume) for extremely aggressive environment  
 Unit weight: 150 pcf  
 Modulus of Elasticity: Based on the use of Florida Ilmerock concrete

**REINFORCING STEEL**  
 Grade: 60,000 psi ASTM A615

**PRESTRESSING STEEL**  
 Grade: 270,000 psi (Low-Relaxation Strand)

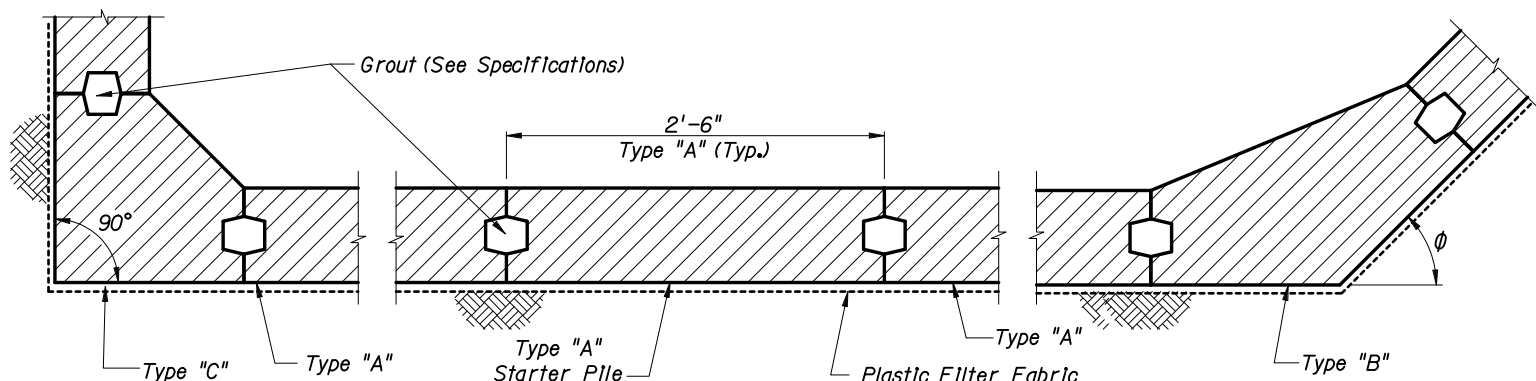
**DESIGN PARAMETERS:**  
 Type "A"  
 Concrete Compressive Strength at release of prestressing: 4000 psi minimum  
 Uniform compression after prestressing losses: 1000 psi minimum  
 Pick-up, Storage and Transportation: 0.0 psi tension with 1.5 times pile self weight  
 Types "B" & "C"  
 Pick-up, Storage and Transportation: Minimum compressive strength  $f'_{ci} \geq 4000$  psi required.

**ENVIRONMENT:**  
 The pile designs are applicable to all Environments.

**PLASTIC FILTER FABRIC:**  
 The plastic filter fabric shall extend to the bottom of the "X" dimension.

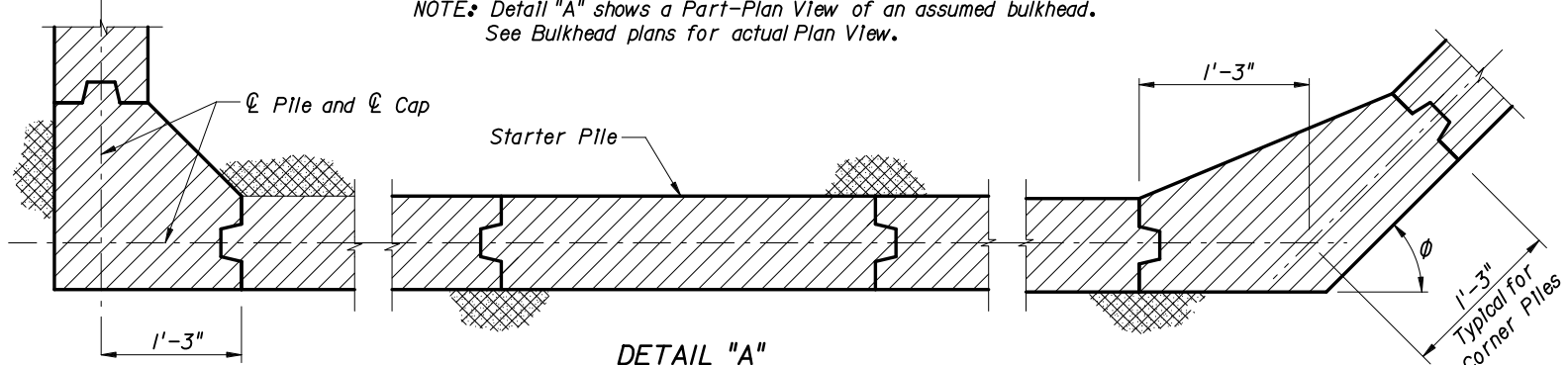
**PILE PICK-UP AND HANDLING:**  
 Type "A"  
 Pick-up of pile may be either a single point pick-up or a two point pick-up as shown below.  
 Types "B" & "C"  
 Two point pick-up for lifting out of forms & two point support for storage & transportation.  
 Single point pick-up for installation only.

**PILE FIT-UP:**  
 The 2'-6" Sheet Pile dimension is nominal. This dimension may be shortened by the Manufacturer up to 1/2" to allow for Sheet Pile fit-up in its final position. Minimum Sheet Pile width is 2'-5 1/2". No changes shall be made to the tongues or grooves.

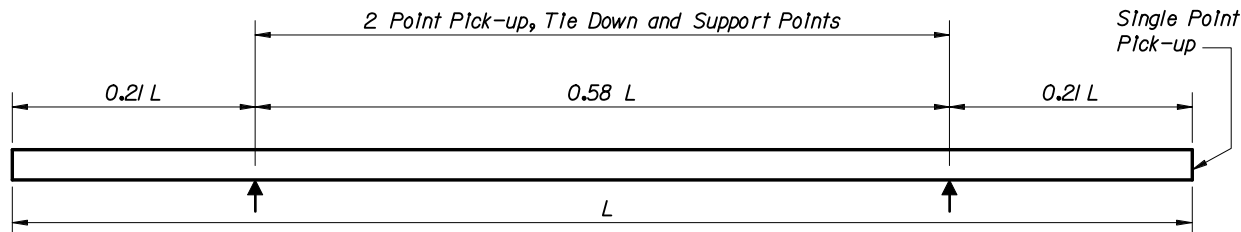


**DETAIL "A"**  
 (Cap and Anchoring System Not Shown)  
 (Section Taken Above Dimension "X")

**NOTE:** Detail "A" shows a Part-Plan View of an assumed bulkhead. See Bulkhead plans for actual Plan View.



**DETAIL "A"**  
 (Section Taken Below Dimension "X")



**PILE STORAGE AND TRANSPORTATION SUPPORT DETAILS**

REVISIONS			
DATE	BY	DESCRIPTION	
01/01/06	CEB	Changed "DESIGN PARAMETERS" and "PILE PICK-UP AND HANDLING" notes for Type "B" & "C" piles. Deleted plastic filter fabric from Detail "A" (Section Taken Below Dimension "X").	



2006 Interim Design Standard  
**NOTES AND DETAILS FOR  
 PRECAST CONCRETE SHEET PILES**

Interim Date: 01/01/06  
 Sheet No.: 1 of 1  
 Index No.: **20400**