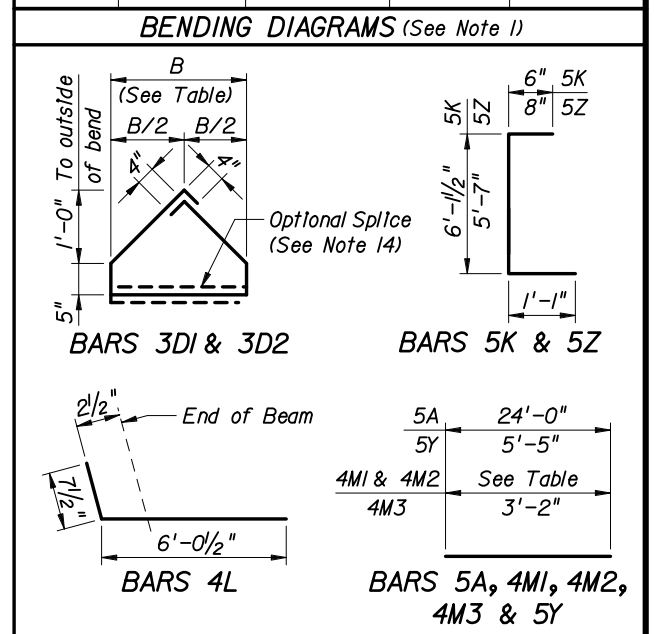
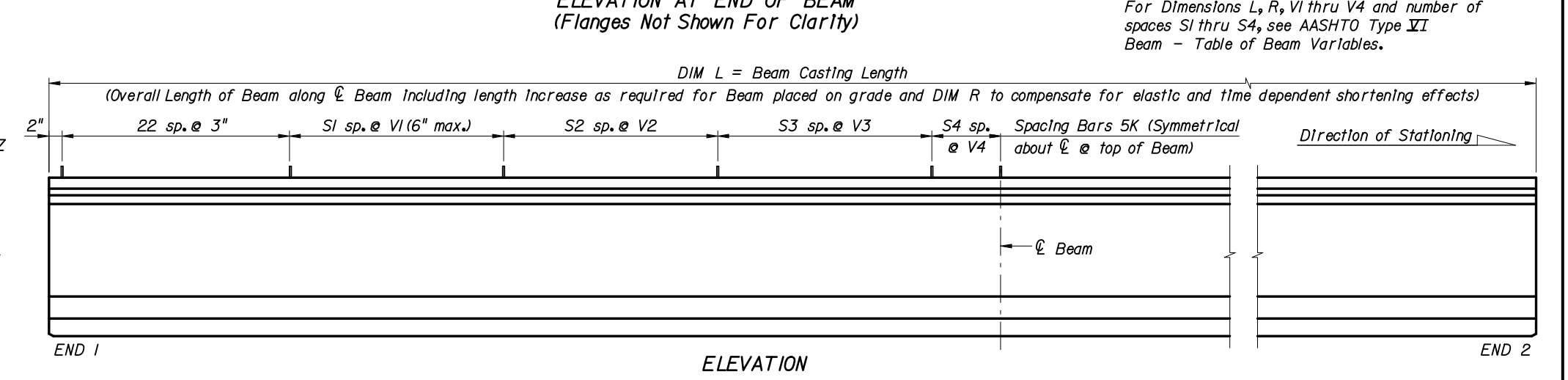
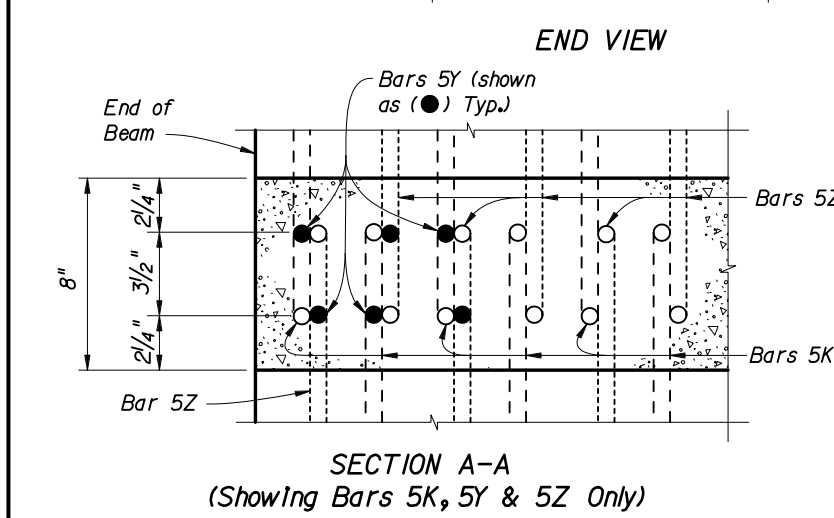


**BILL OF REINFORCING STEEL
FOR ONE BEAM ONLY**

MARK	NOTE NUMBERS	SIZE	NUMBER REQUIRED	LENGTH (NOTE 1)
A	—	5	12	24'-0"
D1	9, 11 & 14	3	21	See Table
D2	9, 11 & 14	3	21	See Table
K	2, 9, 11 & 13	5	See Table	7'-9"
L	3 & 4	4	26	6'-8"
M1	9 & 10	4	15	See Table
M2	9 & 10	4	15	See Table
M3	9	4	See Table	3'-2"
N	5	3/8" Ø Strand	4	DIM L + 5"
Y	9 & 11	5	12	5'-5"
Z	2, 9, 11 & 13	5	12	7'-4"



NOTES:
 Work this Index with Index No. 20110 - Typical AASHTO and Bulb-T Beam Details and Notes and the AASHTO Type VI Beam - Table of Beam Variables In Structures Plans.
 For referenced notes, see Index No. 20110.
 For Dimensions L, R, VI thru V4 and number of spaces SI thru S4, see AASHTO Type VI Beam - Table of Beam Variables.



REVISIONS

DATE	BY	DESCRIPTION	DATE	BY	DESCRIPTION
01/01/06	SJN	Embedded Bearing Plate added.			

2006 Interim Design Standard

AASHTO TYPE VI BEAM - STANDARD DETAILS

Interim Date: 01/01/06 Sheet No. 1 of 1
 Index No. 20160