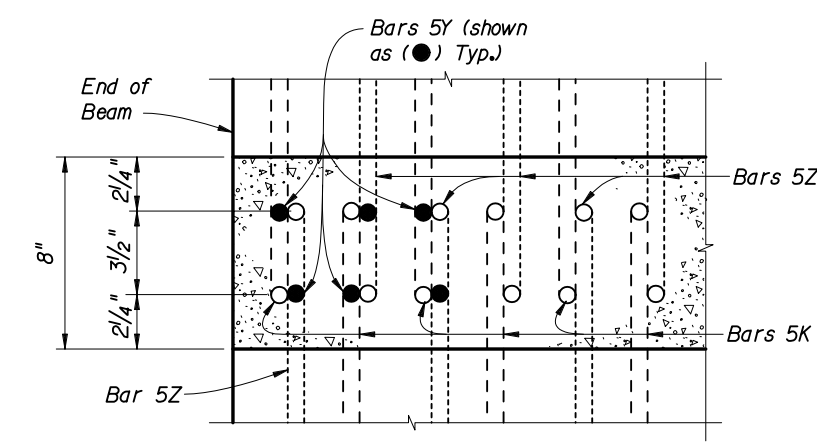
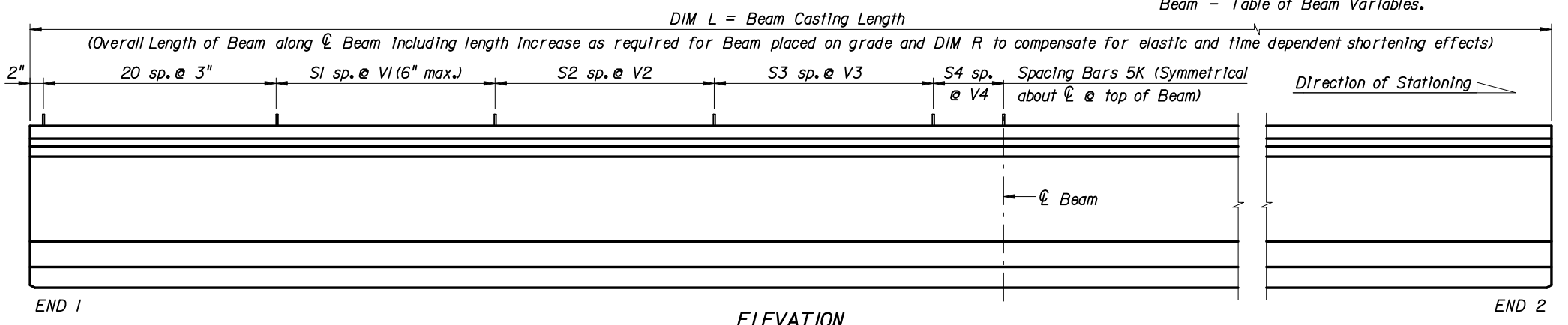


END VIEW

ELEVATION AT END OF BEAM  
(Flanges Not Shown For Clarity)



SECTION A-A  
(Showing Bars 5K, 5Y & 5Z Only)



END 1

ELEVATION

END 2

BILL OF REINFORCING STEEL FOR ONE BEAM ONLY				
MARK	NOTE NUMBERS	SIZE	NUMBER REQUIRED	LENGTH (NOTE 1)
A	—	5	8	2'-0"
D1	9, 11 & 14	3	20	See Table
D2	9, 11 & 14	3	20	See Table
K	2, 9, 11 & 13	5	See Table	7'-0"
L	3 & 4	4	24	6'-3"
M1	9 & 10	4	14	See Table
M2	9 & 10	4	14	See Table
M3	9	4	See Table	3'-2"
N	5	3/8" Ø Strand	4	DIM L + 5"
Y	9 & 11	5	12	4'-8"
Z	2, 9, 11 & 13	5	12	6'-7"

BENDING DIAGRAMS (See Note 1)				
BARS 3D1 & 3D2		BARS 5K & 5Z		
BARS 4L		BARS 5A, 4M1, 4M2, 4M3 & 5Y		

**NOTES:**  
 Work this Index with Index No. 20110 - Typical AASHTO and Bulb-T Beam Details and Notes and the AASHTO Type V Beam - Table of Beam Variables in Structures Plans.  
 For referenced notes, see Index No. 20110.  
 For Dimensions L, R, VI thru V4 and number of spaces S1 thru S4, see AASHTO Type V Beam - Table of Beam Variables.

REVISIONS			
DATE	BY	DESCRIPTION	
01/01/06	SJN	Embedded Bearing Plate added.	

2006 Interim Design Standard

**AASHTO TYPE V BEAM - STANDARD DETAILS**

Interim Date: 01/01/06

Sheet No. 1 of 1

Index No. **20150**