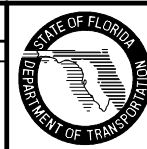


REVISIONS

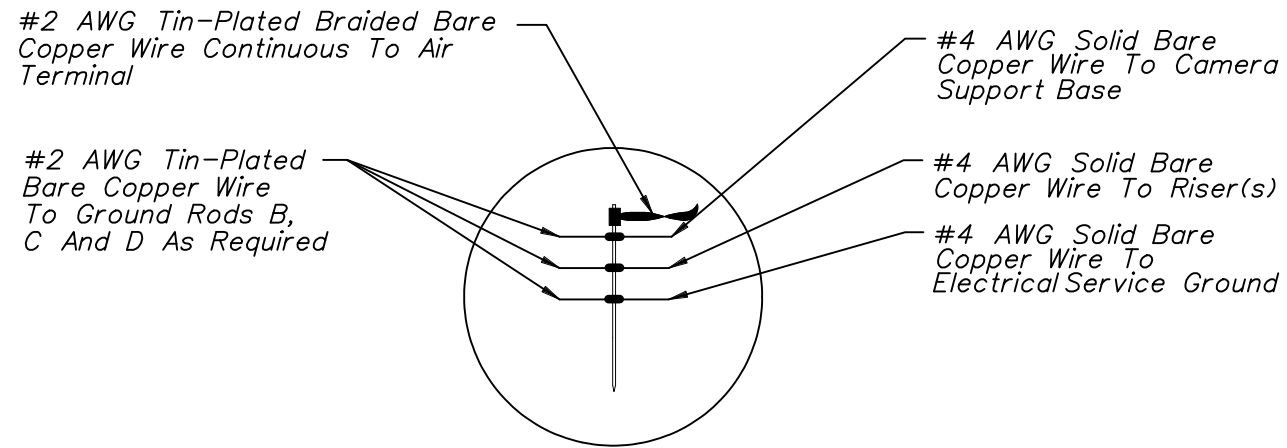
Date	By	Description	Date	By	Description
01/01/06	ITS	New Design Standard Index.			



2006 Interim Design Standard

CCTV POLE GROUNDING

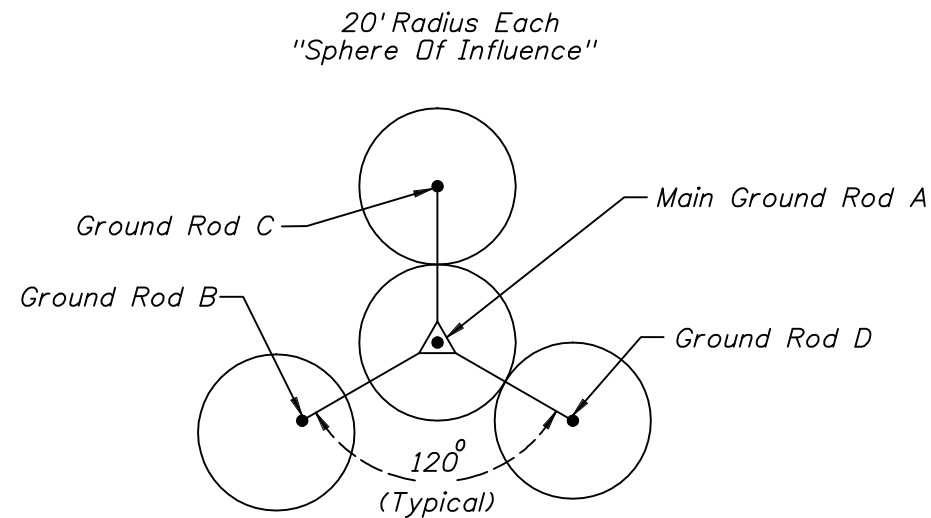
Interim Date	Sheet No.
01/01/06	1 of 2
Index No.	
18102	



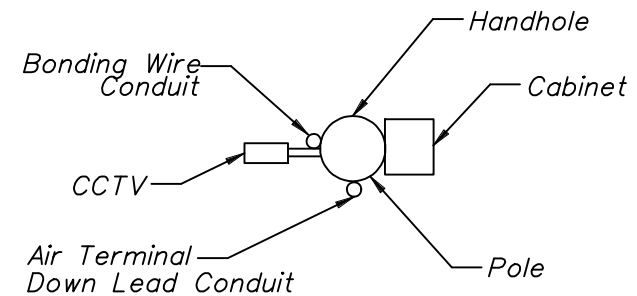
INSET "A"

GENERAL NOTES:

1. Exothermically weld all connections to ground rods.
2. Bond #4 AWG solid bare copper wire to the rigid galvanized steel risers.
3. Install marker tape directly above all grounding electrodes and conductors at a depth of 6".
4. All data, coaxial and power cables to the camera shall be completely concealed.
5. All air terminals must meet UL-96A.
6. Ground rod A is required. Ground rods B, C and D will be required as necessary to meet the ground resistance requirements in the contract documents.
7. Place ground system within right of way.
8. Route all camera cables inside arm of mounting bracket.
9. Main ground rod to be placed immediately adjacent to pole.



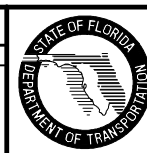
GROUND ROD PLACEMENT DETAIL
(Typical Each Pole)



ORIENTATION OF CONDUITS
AND DEVICES ON POLE

Not To Scale

REVISIONS					
Date	By	Description	Date	By	Description
01/01/06	ITS	New Design Standard Index.			



2006 Interim Design Standard
CCTV POLE GROUNDING

Interim Date	Sheet No.
01/01/06	2 of 2
Index No.	
18102	