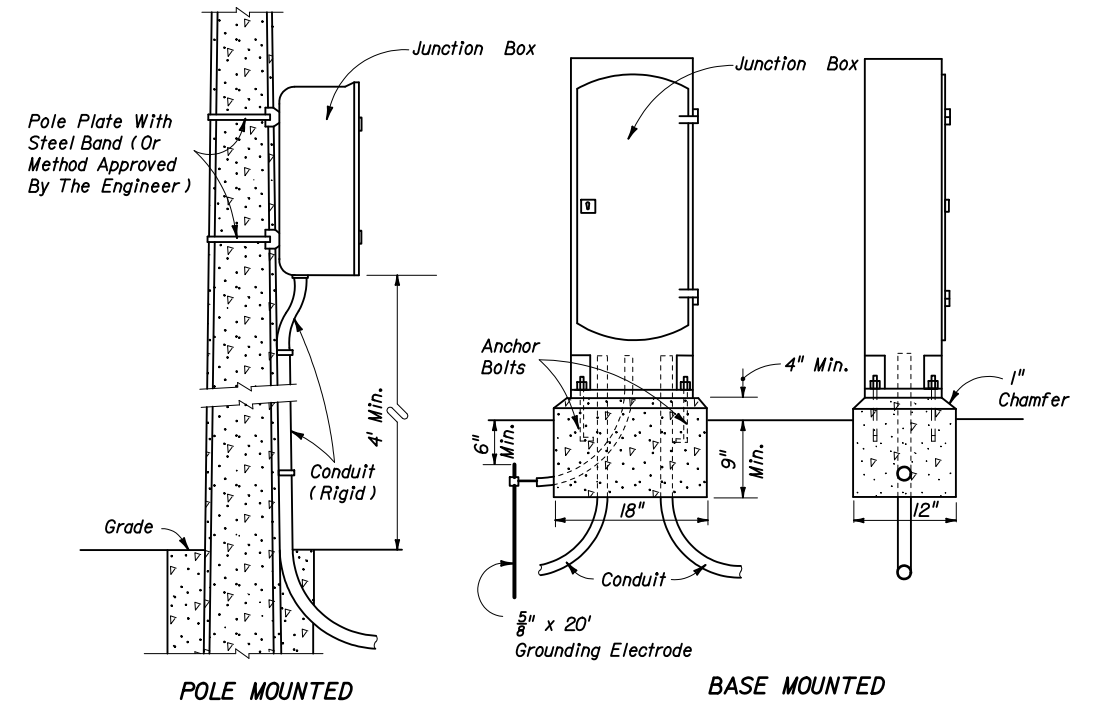


Liquid tight flexible conduit is approved for use from the electrical disconnect to the cabinet when both are installed on the same pole.

POLE MOUNTED CABINET

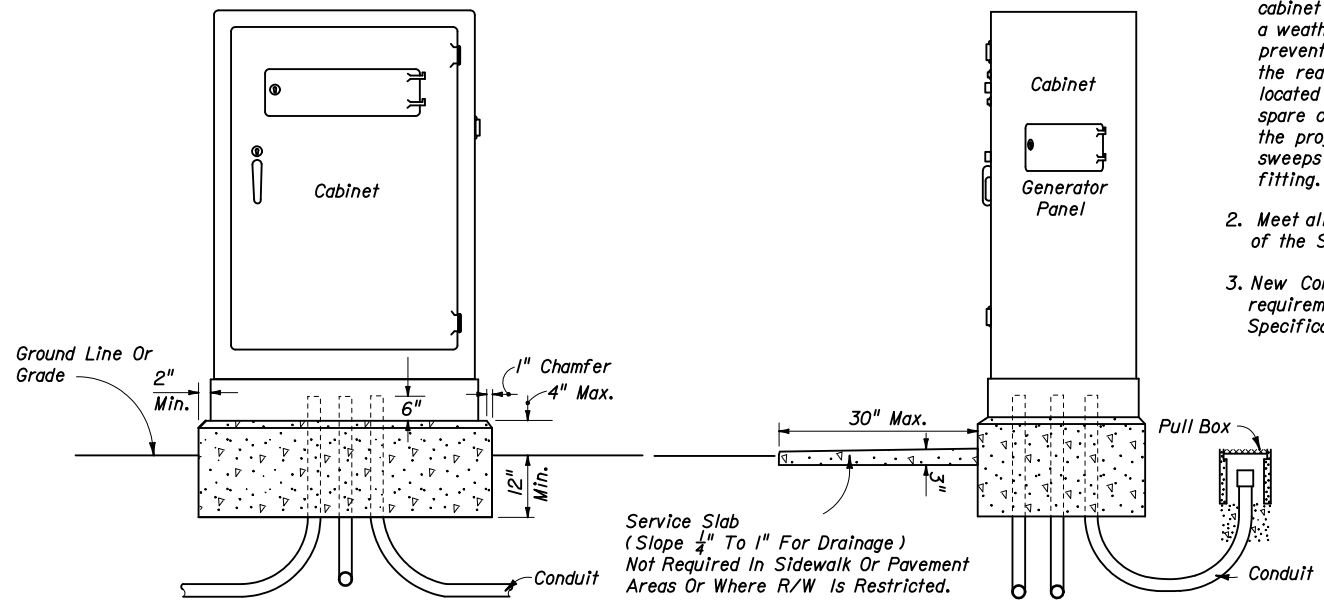
* If holes for cabinet mounting require relocation, original holes shall be filled in with concrete or covered with a non corrosive cover plate.



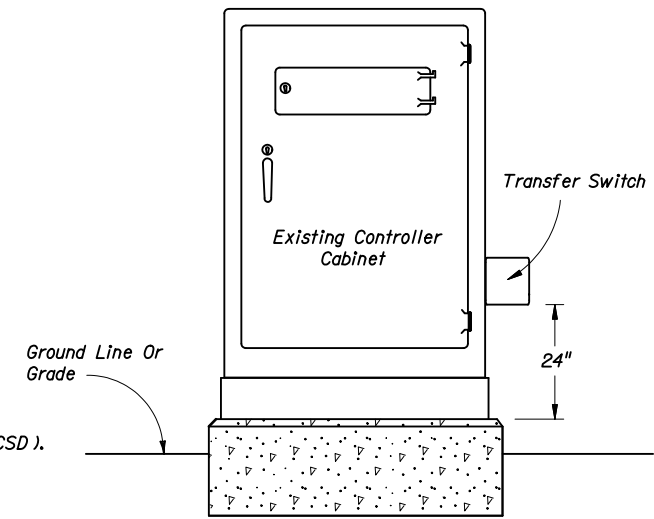
INTERCONNECT JUNCTION BOX

Notes:

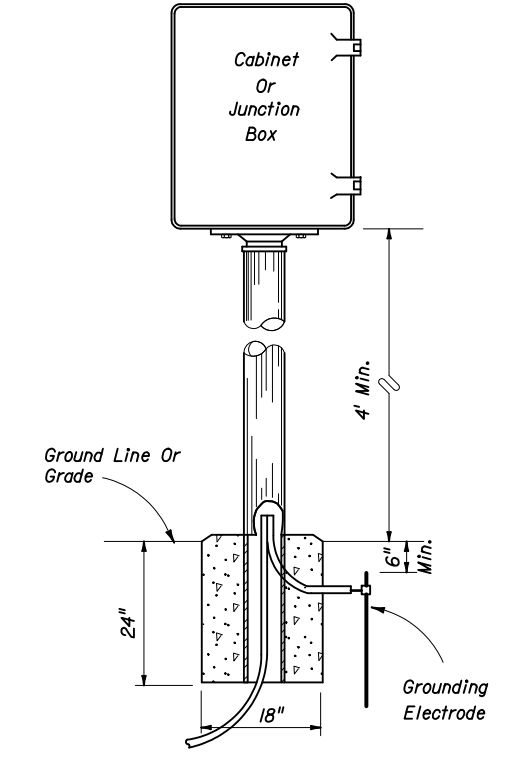
1. The number, size and orientation of conduit sweep will vary according to site condition or locations. Two spare 2" PVC conduits shall be provided in all bases. The spares shall exit in the direction of the center rear of the cabinet base, into a pull box and capped with a weather tight fitting. If obstructions prevent the spare conduit from exiting to the rear, or the rear of the cabinet is located on the R/W line, a side exit of the spare conduits will have to be approved by the project engineer. All spare conduit sweeps shall be capped with a weather proof fitting.
2. Meet all grounding requirements of Section 620 of the Standard Specifications.
3. New Controller Cabinet installation shall meet the requirements of Section A676-1 of the Minimum Specifications for Traffic Control Signal Devices (MSTCSD).



BASE MOUNTED CABINET



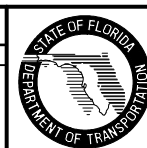
Existing controller cabinets to be retrofitted shall meet the requirements of Section A678-16 of the Minimum Specifications for Traffic Control Signal Devices (MSTCSD). The signalized intersection controller cabinet retrofit installation procedures are located at: http://www.dot.state.fl.us/TrafficOperations/pdf/050903_Generator_Guidelines.pdf



PEDESTAL MOUNTED

REVISIONS

DATE	BY	DESCRIPTION	DATE	BY	DESCRIPTION
05/18/06	L.W.	Added detail and notes for alternate power Transfer Switch.			



2006 Interim Design Standard

CABINET INSTALLATION DETAILS

Interim Date: 07/01/06
 Sheet No.: 1 of 1
 Index No.: 17841