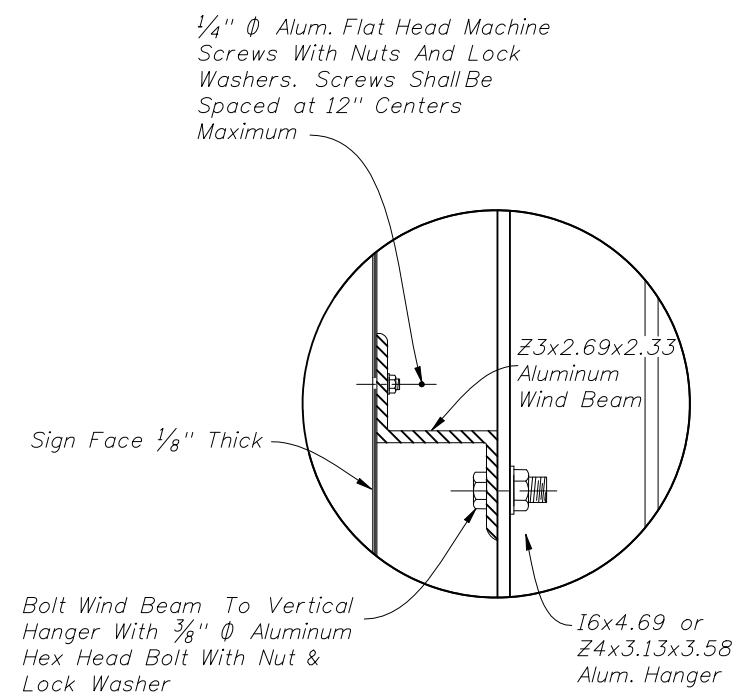
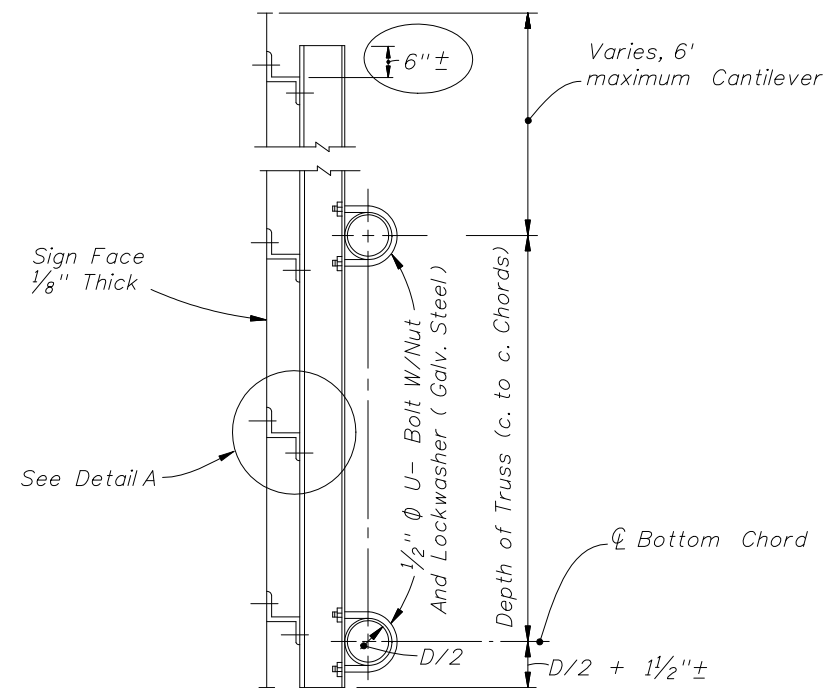
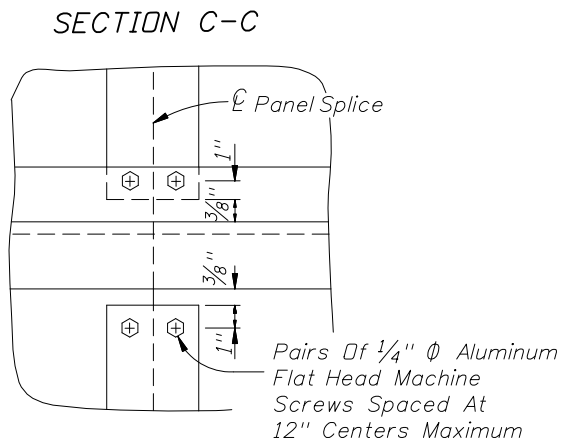
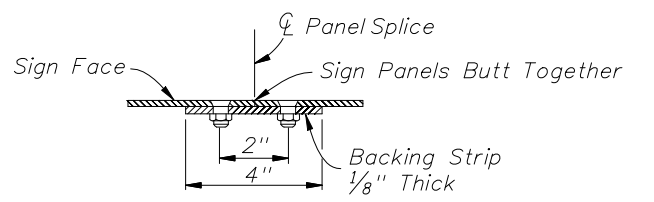


Wind M.P.H.	No. Beams	Max. Depth	Number Of 16x4.69 or Z4x3.13x3.58 Vertical Hanger Beams For Sign Length			
			2 Hangers Sign Length	3 Hangers Sign Length	4 Hangers Sign Length	5 Hangers Sign Length
150	2	5'-0"	0 to 15'-0"	15'-1" to 30'-0"	30'-1" to 45'-0"	
150	3	8'-6"	0 to 15'-0"	15'-1" to 30'-0"	30'-1" to 45'-0"	
150	4	11'-6"	0 to 13'-0"	13'-1" to 18'-3"	18'-4" to 24'-9"	24'-10" to 31'-4"
150	5	14'-0"	0 to 13'-0"	13'-1" to 18'-3"	18'-4" to 24'-9"	24'-10" to 31'-4"
130	2	5'-3"	0 to 15'-0"	15'-1" to 30'-0"	30'-1" to 45'-0"	
130	3	8'-10"	0 to 15'-0"	15'-1" to 22'-3"	22'-4" to 30'-0"	30'-1" to 38'-0"
130	4	12'-0"	0 to 15'-0"	15'-1" to 22'-3"	22'-4" to 30'-0"	30'-1" to 38'-0"
130	5	15'-0"	0 to 11'-7"	11'-8" to 16'-4"	16'-5" to 22'-2"	22'-3" to 28'-0"
110	2	5'-6"	0 to 15'-0"	15'-1" to 30'-0"	30'-1" to 45'-0"	
110	3	9'-6"	0 to 15'-0"	15'-1" to 27'-3"	27'-4" to 37'-0"	37'-1" to 45'-0"
110	4	12'-9"	0 to 15'-0"	15'-1" to 27'-3"	27'-4" to 37'-0"	37'-1" to 45'-0"
110	5	16'-0"	0 to 14'-3"	14'-4" to 20'-0"	20'-1" to 27'-0"	27'-1" to 34'-3"

\*Note: Spacing of vertical hangers may be varied slightly or as necessary to clear the truss struts and diagonals at panel points.

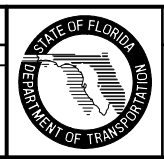
TYPICAL SIGN FACE ELEVATION FOR OVERHEAD TRUSS



DETAILS OF SIGN FACE & TRUSS CONNECTION

GENERAL NOTES  
 (1) For "General Notes" covering Material Specifications see Index 11200.  
 (2) Design based on 32 ft. maximum height to centroid of sign panel.  
 (3) The Design Wind Speed shall conform to Wind Speed by County shown on Index 11200, Sheet 1 of 3.

REVISIONS					
DATE	BY	DESCRIPTION	DATE	BY	DESCRIPTION
12/20/06	LW	AASHTO 2001 LTS-4 Specifications update. Aluminum post option has been eliminated. Wind M.P.H. revised.			



2006 Interim Design Standard

**STEEL OVERHEAD SIGN STRUCTURES**

Interim Date  
01/01/07

Sheet No.  
1 of 1

Index No.  
**11300**