

- NOTES:**
1. A Pull Post Assembly is required at maximum intervals of 500'-0". See Sheet No. 3 of 4.
 2. Dimension is measured along Inside Face of Concrete Parapet.
 3. Dimension shown is for 32" F-Shape Traffic Railing Barriers as shown in Index No. 420. Adjust as required for other Traffic Railing Barriers.
 4. For sidewalk clear widths greater than 5'-0", increase the radius and height of the curved portion of the Hoop Post at the rate of 6" for every one foot increase in sidewalk width.

FENCING NOTES

FENCE INSTALLATION:

Install posts plumb (within a tolerance of $\pm 1/2"$). Use shim plates as required to achieve plumb. The required quantity and thickness of shim plates will be determined in the field. Install chain link fence in accordance with ASTM F 567 as applicable.

TRAFFIC RAILING BARRIER DETAILS:

See Superstructure Sheets for Traffic Railing Barrier details.

CONCRETE PARAPET DETAILS:

See Index No. 820 - Pedestrian/Bicycle Railing for Concrete Parapet details. Provide fencing in lieu of aluminum bullet railing as shown on Index No. 820.

LIMITS OF FENCING:

Limits of fencing are from begin of approach slab at Begin Bridge to end of approach slab at End Bridge, unless otherwise shown in the plans.

PAYMENT:

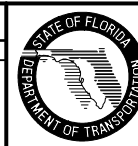
Payment will be made under Fencing, Type R. Payment includes posts, horizontal and expansion rails, brace bands, rail ends, combination rail ends, boulevard clamps, chain link fabric, tension wire, ties, hog rings, tension bars and bands, pipe clamps, base plates, anchor rods, bolts, nuts, washers, shim plates, spacers, neoprene pads, miscellaneous fence fittings and hardware and all incidental materials and labor required to complete installation of the fence.

CROSS REFERENCE:

For Table of Fence Components and Table of Post Attachment Components see Sheet No. 2 of 4.
For Pull Post Assembly Detail, View A-A and Detail "A" see Sheet No. 3 of 4.
For Detail "B" and "E" see Sheet No. 4 of 4.

REVISIONS

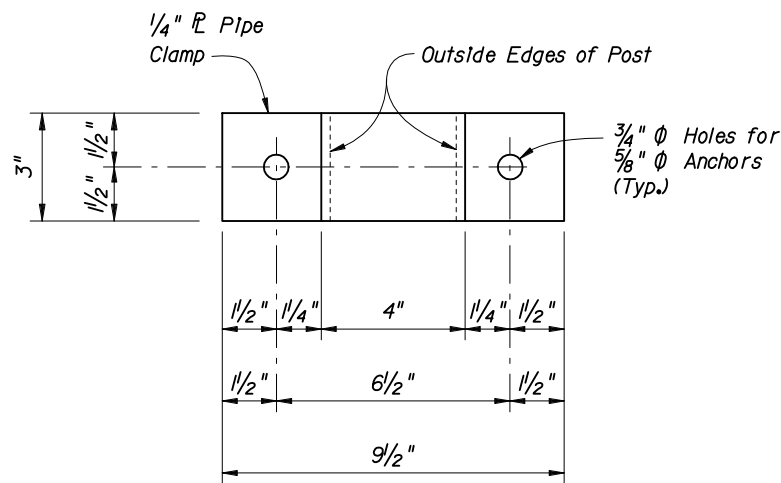
DATE	BY	DESCRIPTION	DATE	BY	DESCRIPTION
01/01/06	SJN	Deleted "(Pedestrian Overpass)" from payment note and added Note 4.			



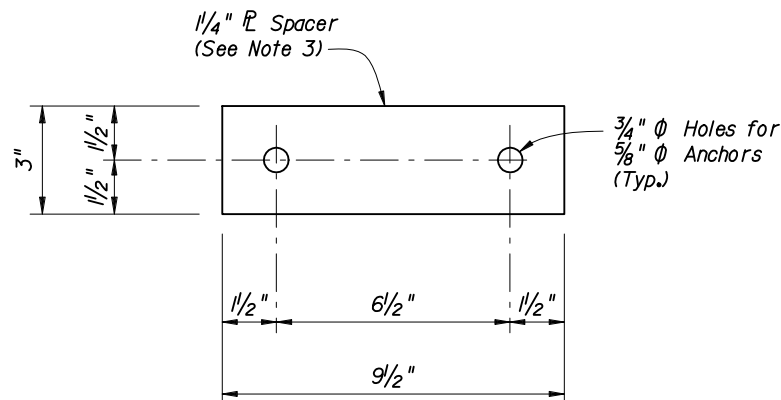
2006 Interim Design Standard

BRIDGE FENCING (ENCLOSED)

Interim Date	Sheet No.
01/01/06	1 of 4
Index No.	
812	

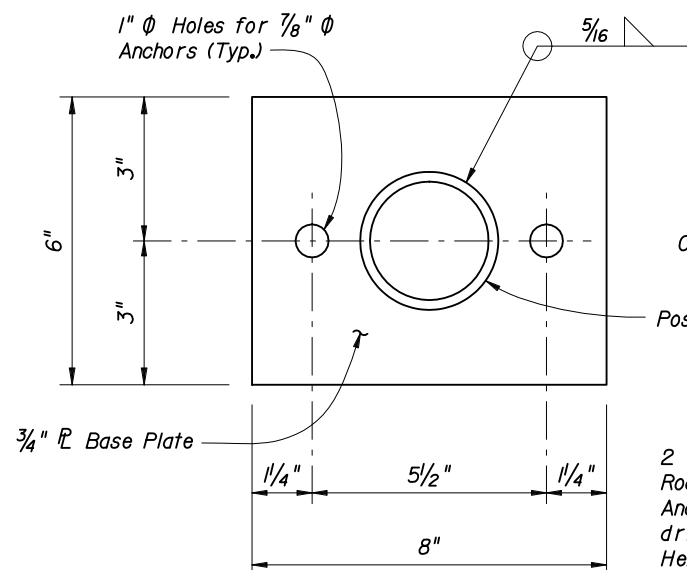


PIPE CLAMP DETAIL

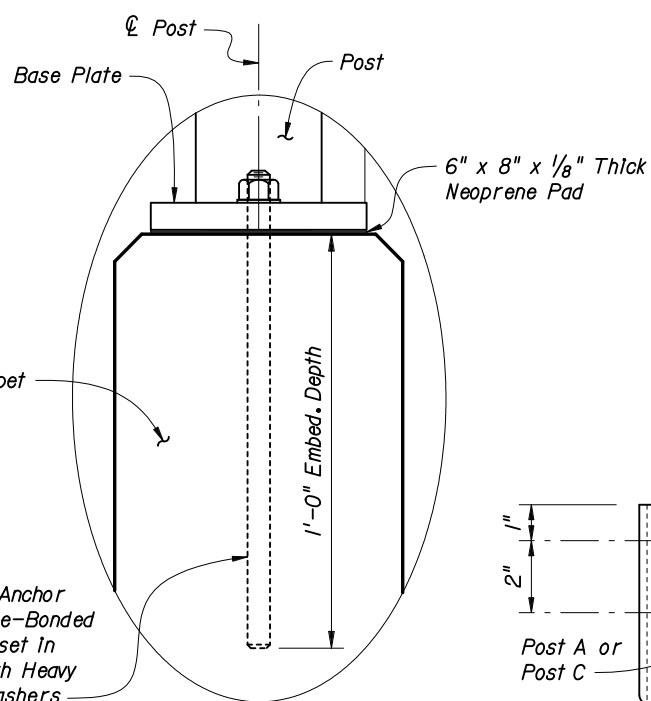


SPACER DETAIL

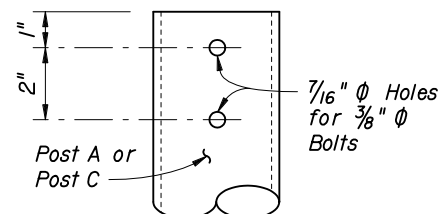
(Must be manufactured from an Incompressible material (i.e., steel or aluminum))



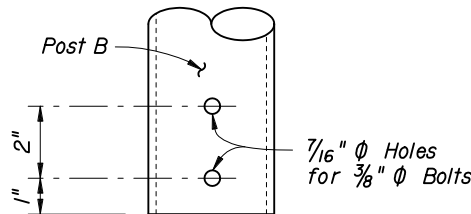
BASE PLATE DETAIL



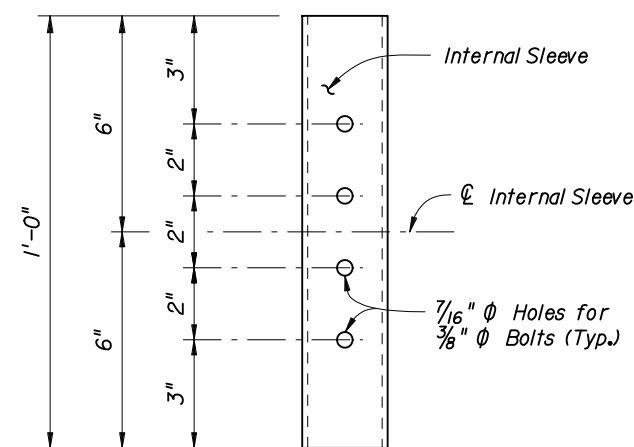
DETAIL "B"



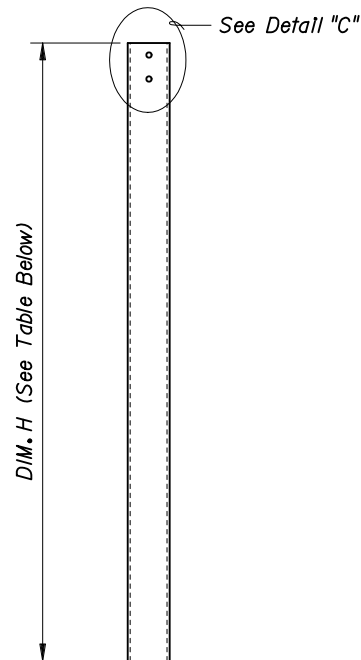
DETAIL "C"



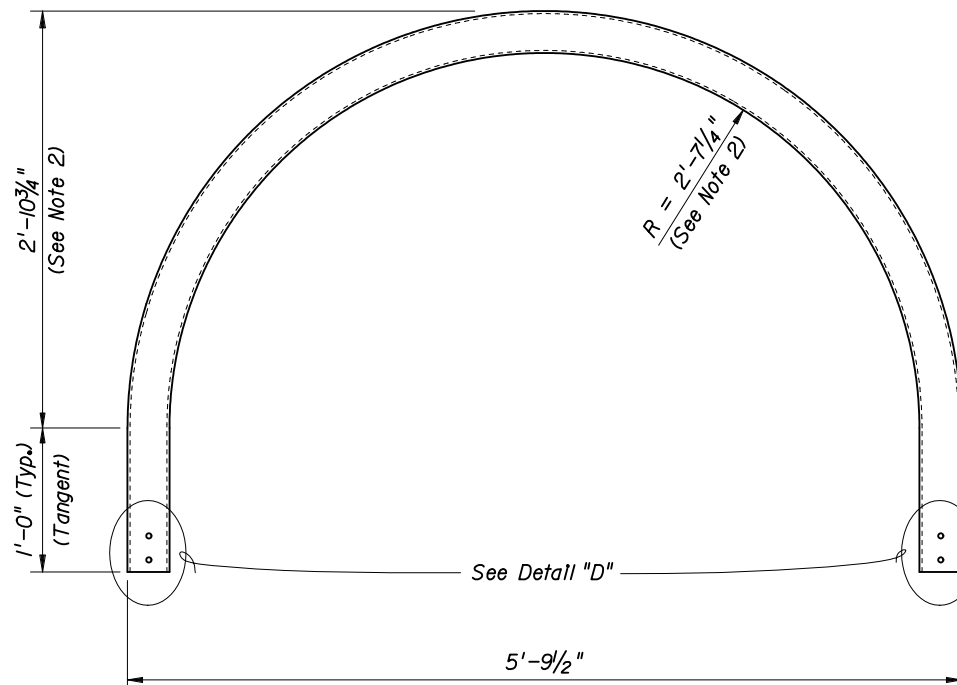
DETAIL "D"



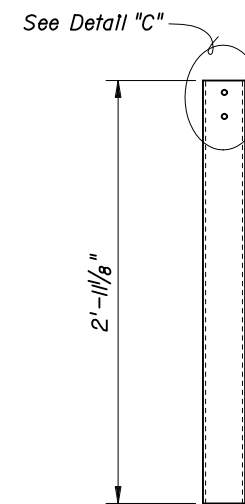
DETAIL "E"
(INTERNAL SLEEVE DETAIL)



POST A DETAIL



POST B DETAIL



POST C DETAIL

SIDEWALK CROSS-SLOPE	DIM. H (See Note 1)
2% Left	5'-6 1/4"
2% Right	5'-3 3/4"

NOTES:

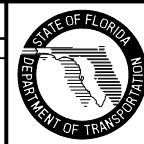
1. Values shown for DIM. H are for a 5'-0" clear sidewalk width. Adjust as required for clear sidewalk widths greater than 5'-0".
2. For clear sidewalk widths greater than 5'-0" increase radius and height by 6" for every one foot increase in sidewalk width.
3. Spacer plate thickness shown is for the 32" F-Shape Traffic Railing shown in Index No. 420. Adjust thickness as required for other Traffic Railings.

CROSS REFERENCE:

For location of Details "B" and "E" see Sheet No. 1 of 4.

REVISIONS

DATE	BY	DESCRIPTION	DATE	BY	DESCRIPTION
01/01/06	SJN	Changed DIM. H dimensions and Note 1; Added Notes 2 & 3.			



2006 Interim Design Standard

BRIDGE FENCING (ENCLOSED)

Interim Date	Sheet No.
01/01/06	4 of 4
Index No.	
812	