

APPENDIX

L. EXFILTRATION DESIGN - SAMPLE PLANS

Drainage Design Guide
Appendix L: Exfiltration Design - Sample Plans

COMPONENTS OF CONTRACT PLANS SET

- ROADWAY PLANS
- SIGNING AND PAVEMENT MARKING PLANS
- LIGHTING PLANS
- STRUCTURE PLANS

A DETAILED INDEX APPEARS ON THE KEY SHEET OF EACH COMPONENT

INDEX OF ROADWAY PLANS

SHEET NO.	SHEET DESCRIPTION
1	KEY SHEET
2 - 3	SUMMARY OF PAY ITEMS
4 - 6	DRAINAGE MAP
7 - 9	TYPICAL SECTIONS
10 - 11	SUMMARY OF QUANTITIES
12	OPTIONAL MATERIALS TABULATION
13	SUMMARY OF DRAINAGE STRUCTURES
14	GENERAL NOTES
15	LANDSCAPE RELOCATION NOTES
16 - 17	PROJECT NETWORK CONTROL PLAN
18 - 24	PROFILE (SR-9A)
25 - 31	SPECIAL PROFILE (RAMP "A")
32 - 36	DRAINAGE STRUCTURES
37	MISCELLANEOUS DRAINAGE DETAILS
38 - 40	MISCELLANEOUS DETAILS
41	ROADWAY SOIL SURVEY
42	CROSS SECTION PATTERN
43 - 56	CROSS SECTIONS
57 - 59	STORMWATER POLLUTION PREVENTION PLAN
60 - 72	TRAFFIC CONTROL PLANS
73 - 79	UTILITY ADJUSTMENTS

GOVERNING STANDARDS AND SPECIFICATIONS:
FLORIDA DEPARTMENT OF TRANSPORTATION,
DESIGN STANDARDS DATED JANUARY 2004,
AND STANDARD SPECIFICATIONS FOR ROAD
AND BRIDGE CONSTRUCTION DATED 2004,
AS AMENDED BY CONTRACT DOCUMENTS.

APPLICABLE DESIGN STANDARDS MODIFICATIONS: 7-1-06


For Design Standards Modifications click on
"Design Standards" at the following web site:
<http://www.dot.state.fl.us/roads/pln/>

REVISIONS

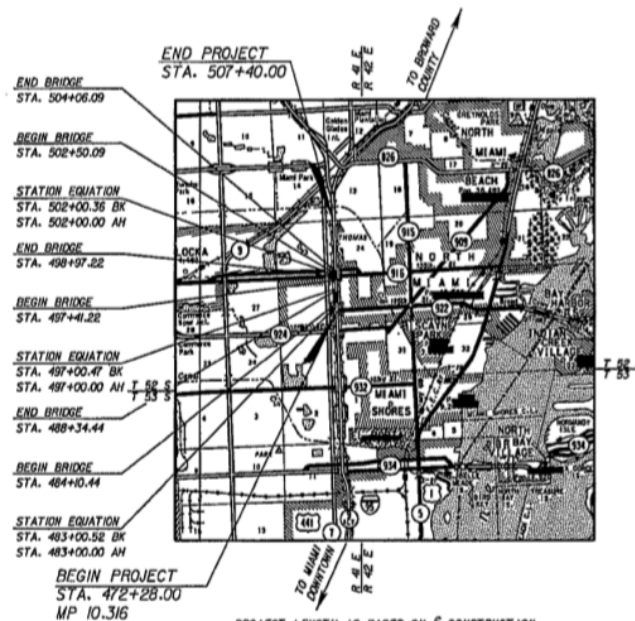
STATE OF FLORIDA
DEPARTMENT OF TRANSPORTATION

CONTRACT PLANS

FINANCIAL PROJECT ID 251669-3-52-01
(FEDERAL FUNDS)
MIAMI-DADE COUNTY (87270000)
STATE ROAD NO. 9A (I-95)



LOCATION OF PROJECT



END PROJECT
STA. 507+40.00

BEGIN BRIDGE
STA. 504+06.09

BEGIN BRIDGE
STA. 502+50.09

STATION EQUATION
STA. 502+00.36 BK
STA. 502+00.00 AH

END BRIDGE
STA. 498+97.22

BEGIN BRIDGE
STA. 497+41.22

STATION EQUATION
STA. 497+00.47 BK
STA. 497+00.00 AH

END BRIDGE
STA. 488+34.44

BEGIN BRIDGE
STA. 484+10.44

STATION EQUATION
STA. 483+00.52 BK
STA. 483+00.00 AH

BEGIN PROJECT
STA. 472+28.00
MP 10.316

PROJECT LENGTH IS BASED ON E CONSTRUCTION

LENGTH OF PROJECT		
	LINEAR FEET	MILES
ROADWAY	2774.65	0.526
BRIDGES	736.00	0.139
NET LENGTH OF PROJECT	3510.65	0.665
EXCEPTIONS		
GROSS LENGTH OF PROJECT	3510.65	0.665

KEY SHEET REVISIONS

DATE	BY	DESCRIPTION


ROADWAY PLANS
ENGINEER OF RECORD: ROBERT T. CARBALLO, P.E.
P.E. NO. 42502

FISCAL YEAR	SHEET NO.
07	1

FDOT PROJECT MANAGER: JASON CHANG, P.E.

ROADWAY SHOP DRAWINGS TO BE SUBMITTED TO:
ROBERT T. CARBALLLO, P.E.
P.E. NO. 42502
CORZO CASTELLA CARBALLLO THOMPSON SALMAN, P.A.
300 PONCE DE LEON BLVD., SUITE 300
CORAL GABLES, FLORIDA 33134

PLANS PREPARED BY:

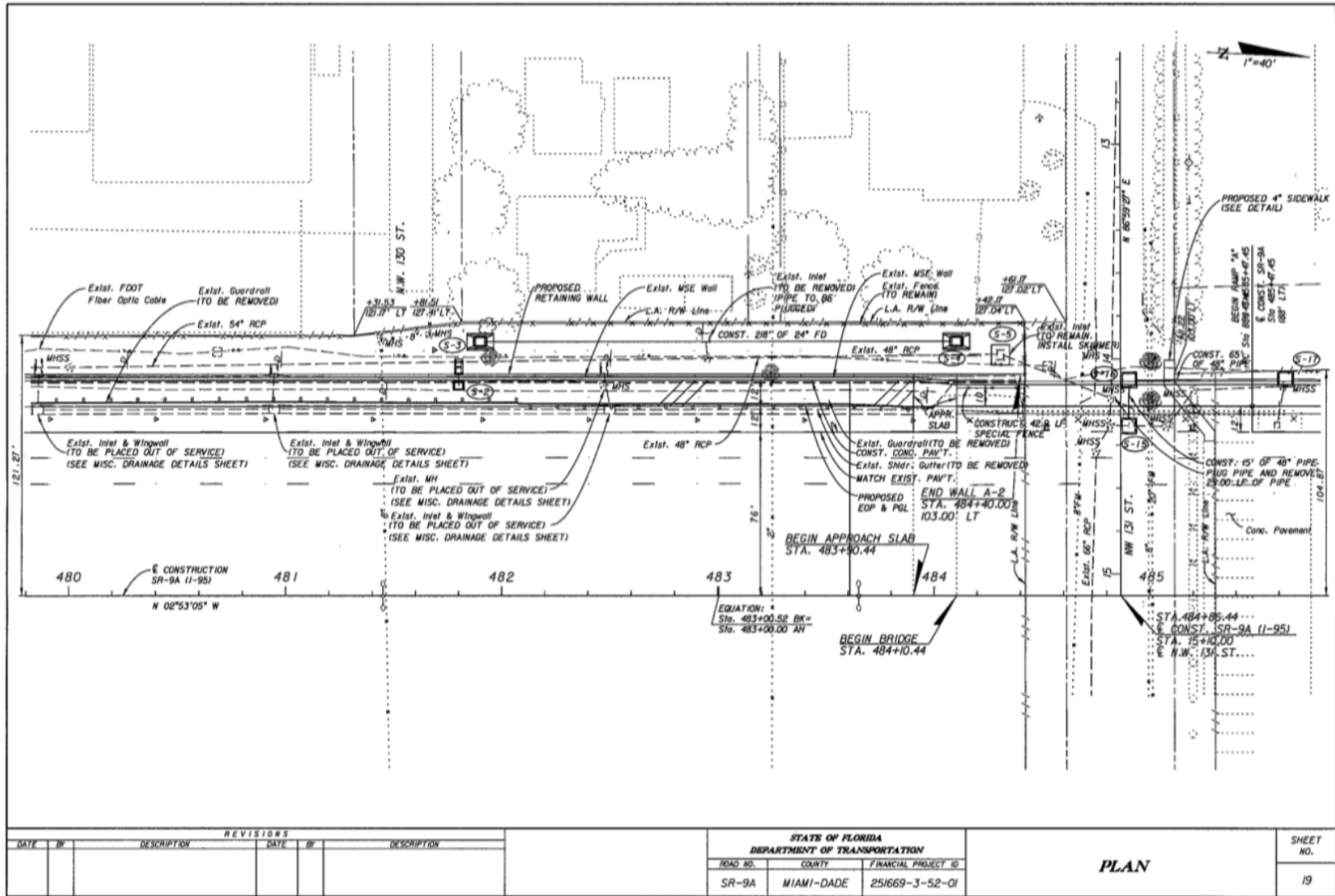


CSTB, PA
801 PONCE DE LEON BLVD., SUITE 900
CORAL GABLES, FLORIDA 33134
MIAMI (305) 448-3900 FLORIDA (800) 448-0227
CERTIFICATION OF AUTHORIZATION NO. 0004022
MEMBER IN CHARGE: ROBERT T. CARBALLLO
CONSULTANT CONTRACT NO. C-8485

NOTE: THE SCALE OF THESE PLANS MAY HAVE CHANGED DUE TO REPRODUCTION.

5/31/2006 8:03:37 AM I:\254693\working\figs1\fig1.dwg

Drainage Design Guide
Appendix L: Exfiltration Design - Sample Plans



Drainage Design Guide
Appendix L: Exfiltration Design - Sample Plans

