
Index 17784

Pedestrian Detector Assembly Installation Details

ORIGINATION

Date: October 3, 2016 Wednesday, August 30, 2017

Name: Dean Perkins

Phone: (850) 414-4359

Email: dean.perkins@dot.state.fl.us

COMMENTARY

Sheet 1: Changed the horizontal reach of pedestrian detector push-button to 10" (Std.) / 15" (Max.); Rearranged sheet; Updated Notes.

Sheet 2: Deleted Sheet.

To match ADA Standards, horizontal reach to pedestrian detector (push-button) must be changed from 15" (24" max.) to 10" max. over an obstruction (i.e., guardrail) or edge of sidewalk.

COMMENTS AND RESPONSES

BLACK = Industry Review Comments RED = Standards Plans Response

Name: Dean Perkins

Date: Wednesday, August 30, 2017

COMMENT:

Would like to see reference to MUTCD layouts for pedestrian push-buttons (Section 4E.08, Figures 4E-3 & 4E-4).

RESPONSE:

Date: 9/19/17

The figures from the MUTCD provide guidance to the designer on the selection of the proper pushbutton locations. This information should be included in the FDM (or other appropriate Department Manual) not the Standard Plans.

Index 17784

Pedestrian Detector Assembly Installation Details

Name: Pete Yauch, P.E.

Date: Friday, September 1, 2017 1:51 PM

COMMENT:

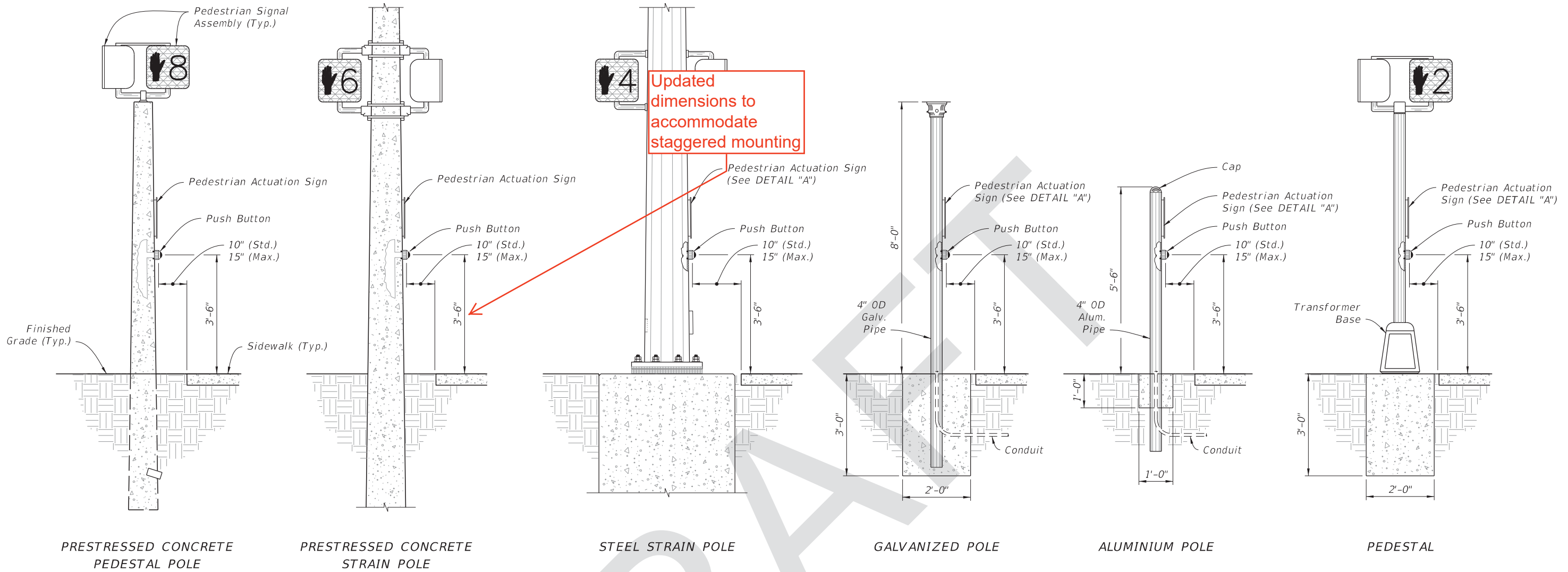
On Sheet 1 of 1:

1. If the center of the button is to be 3'-6" above the adjacent sidewalk, then the staggered mounting on the left example of Detail "A" would be in conflict. The mounting height should either be shown as an acceptable range of values or the staggered mounting should be deleted.
2. In Note 1, "Signs" is misspelled.
3. The street name used on the signs should represent the commonly used name of the street. For example, "Ulmerton Road" would be more descriptive than "SR 688", assuming that is what the street name signs use. I've even seen "hidden" state route designations used on signs – such as SR 55 for US 19.

RESPONSE:

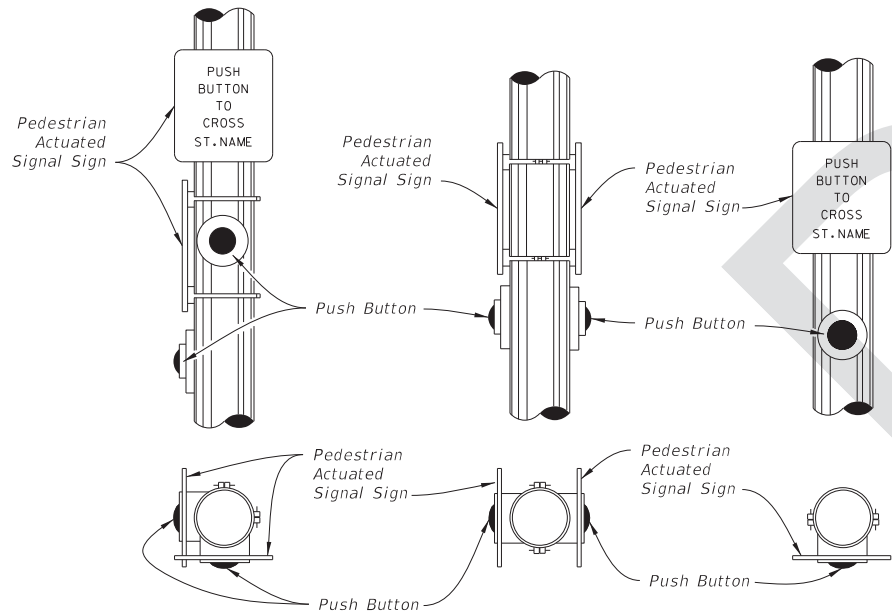
Date: 9/19/17

1. Agreed, the guidelines indicate a maximum height of 48" to the center of the pushbutton. The Index will be updated to indicate a max. height of 4'-0" for a staggered installation.
2. Spelling will be updated.
3. Street Name is not included on the Index. No Change.



Updated dimensions to accommodate staggered mounting

PUSHBUTTON PEDESTRIAN DETECTORS



DETAIL "A"

Corrected Spelling

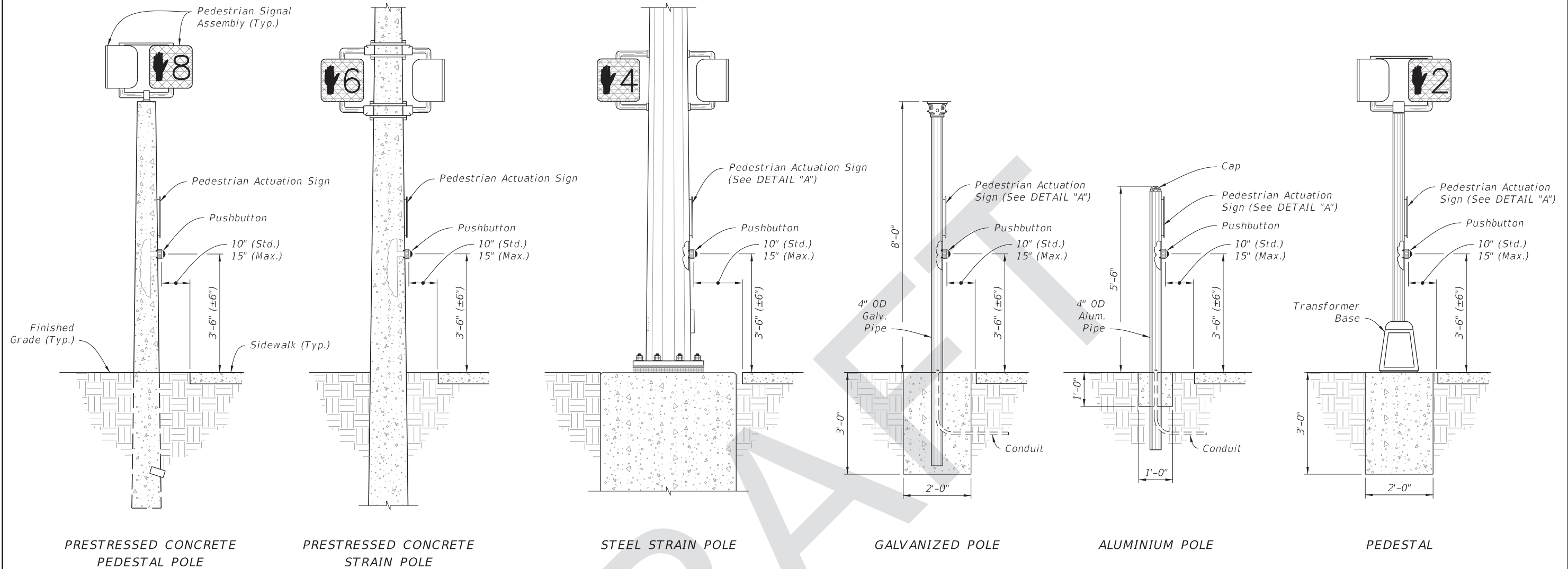
NOTES:

1. Mount Signs above the detectors. See Index 700-102 or MUTCD for sign details.
2. Position the pedestrian pushbutton to clearly indicate which crosswalk signal is actuated by each push button.
3. Mount pushbuttons and Signs in accordance with Specification 665.
4. Install all grounding per Specification 620.

Added Note 5

8/18/2017 8:34:44 AM

LAST REVISION 11/01/17	REVISION	DESCRIPTION:	 FY 2018-19 STANDARD PLANS	PEDESTRIAN DETECTOR ASSEMBLY INSTALLATION DETAILS	INDEX 665-001	SHEET 1 of 1
---------------------------	----------	--------------	---	--	------------------	-----------------



PRESTRESSED CONCRETE
PEDESTAL POLE

PRESTRESSED CONCRETE
STRAIN POLE

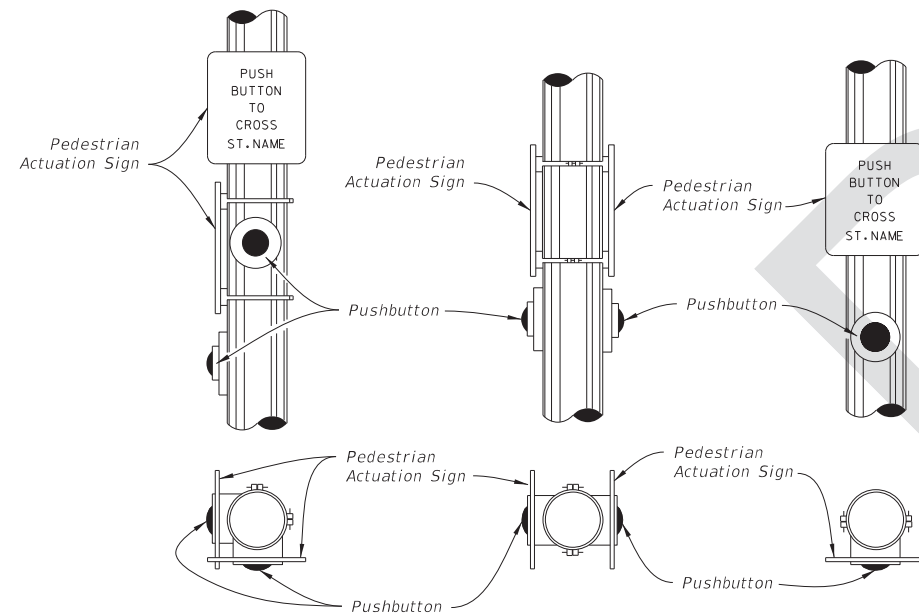
STEEL STRAIN POLE

GALVANIZED POLE

ALUMINIUM POLE

PEDESTAL

PUSHBUTTON PEDESTRIAN DETECTORS




DETAIL "A"

NOTES:

1. Mount Signs above the detectors. See Index 700-102 or MUTCD for sign details.
2. Position the pedestrian pushbutton to clearly indicate which crosswalk signal is actuated by each pushbutton.
3. Mount pushbuttons and Signs in accordance with Specification 665.
4. Install all grounding per Specification 620.
5. Pushbutton mounting height shown above is taken at the center of the actuation switch.

9/19/2017 2:06:20 PM

LAST REVISION 11/01/17	REVISION	DESCRIPTION:	 FY 2018-19 STANDARD PLANS	PEDESTRIAN DETECTOR ASSEMBLY INSTALLATION DETAILS	INDEX 665-001	SHEET 1 of 1
---------------------------	----------	--------------	---	--	------------------	-----------------