

ORIGINATION FORM

Proposed Revisions to a Standard Plans Index
(Please provide all information – Incomplete forms will be returned)

Contact Information:

Date: July 27, 2017
Originator: **Derwood Sheppard**
Phone: (850) 414-4334
Email: derwood.sheppard@dot.state.fl.us

Standard Plans:

Index Number: **515**
Sheet Number (s): 5 of 7
Index Title: Turnouts and Driveways

Summary of the changes:

Sheet 5: Changed the 5' pavement at graded connections callout and note.

Commentary / Background:

Updated to work with changes make to Index 516.

Other Affected Offices / Documents: (Provide name of responsible personnel)

Yes	No	
<input type="checkbox"/>	<input type="checkbox"/>	Other Standard Plans –
<input type="checkbox"/>	<input type="checkbox"/>	FDOT Design Manual –
<input type="checkbox"/>	<input type="checkbox"/>	Basis of Estimates Manual –
<input type="checkbox"/>	<input type="checkbox"/>	Standard Specifications –
<input type="checkbox"/>	<input type="checkbox"/>	Approved Product List –
<input type="checkbox"/>	<input type="checkbox"/>	Construction –
<input type="checkbox"/>	<input type="checkbox"/>	Maintenance –

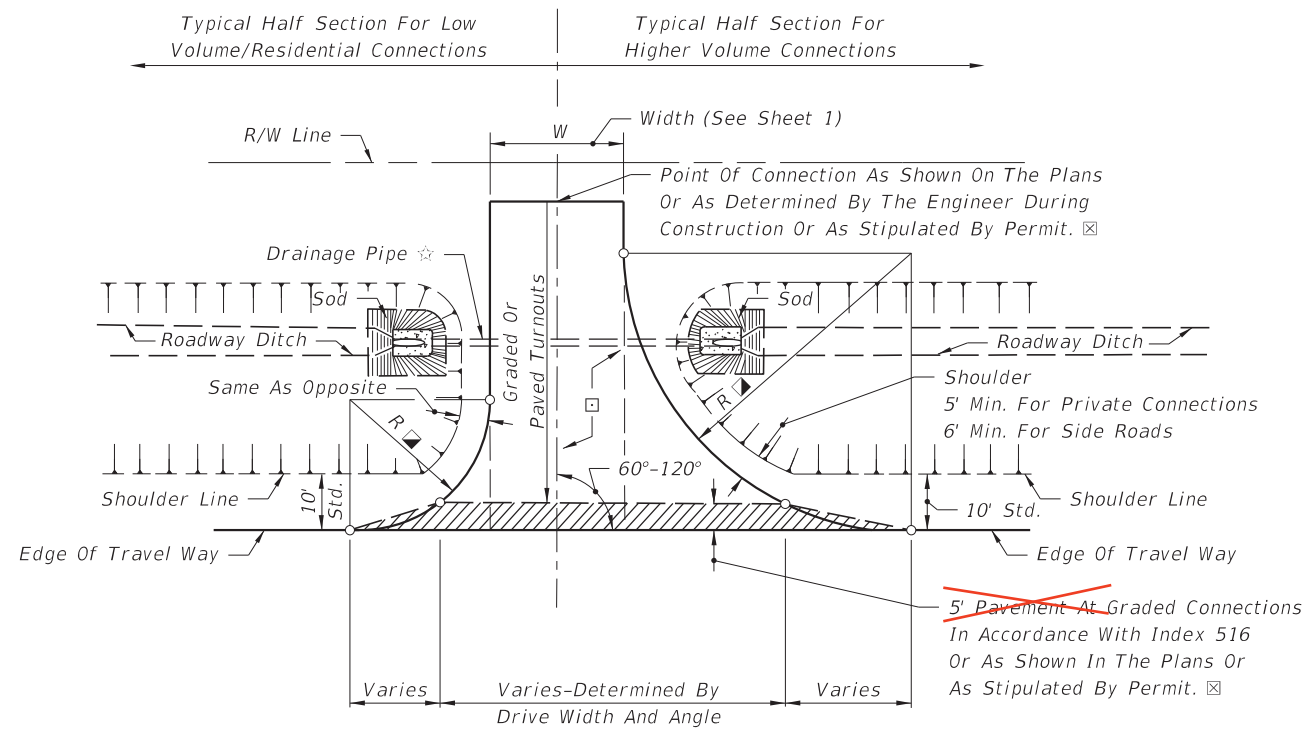
Origination Package Includes: (Email or hand deliver package to Derwood Sheppard)

Yes	N/A	
<input checked="" type="checkbox"/>	<input type="checkbox"/>	Redline Mark-ups
<input type="checkbox"/>	<input type="checkbox"/>	Proposed Standard Plan Instructions (SPI)
<input type="checkbox"/>	<input type="checkbox"/>	Revised SPI
<input type="checkbox"/>	<input type="checkbox"/>	Other Support Documents

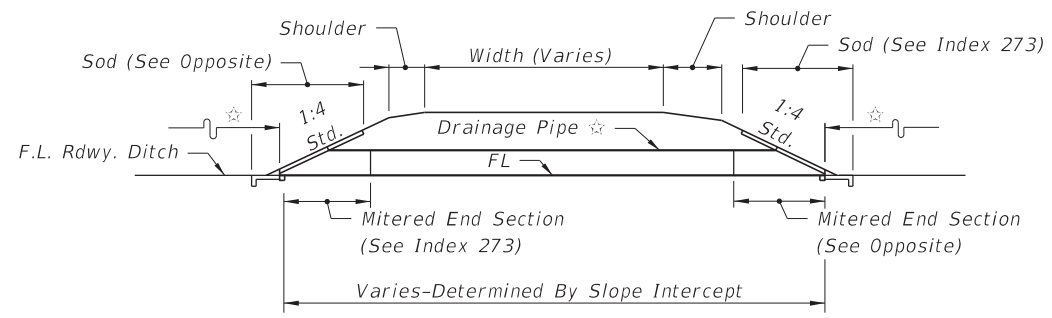
Implementation:

Design Bulletin (Interim) DCE Memo Program Mgmt. Bulletin FY-Standard Plans (Next Release)

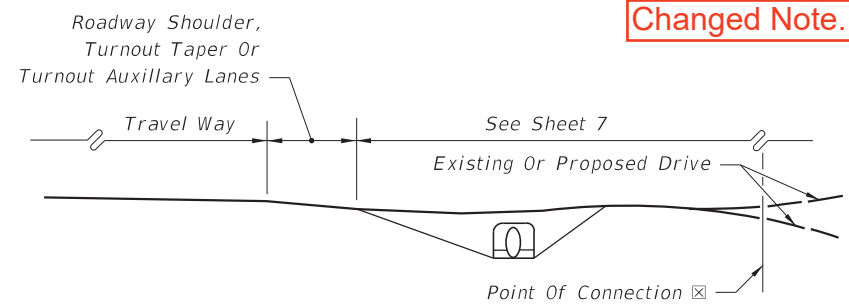
————— **Contact the Roadway Design Office for assistance in completing this form** —————



PLAN



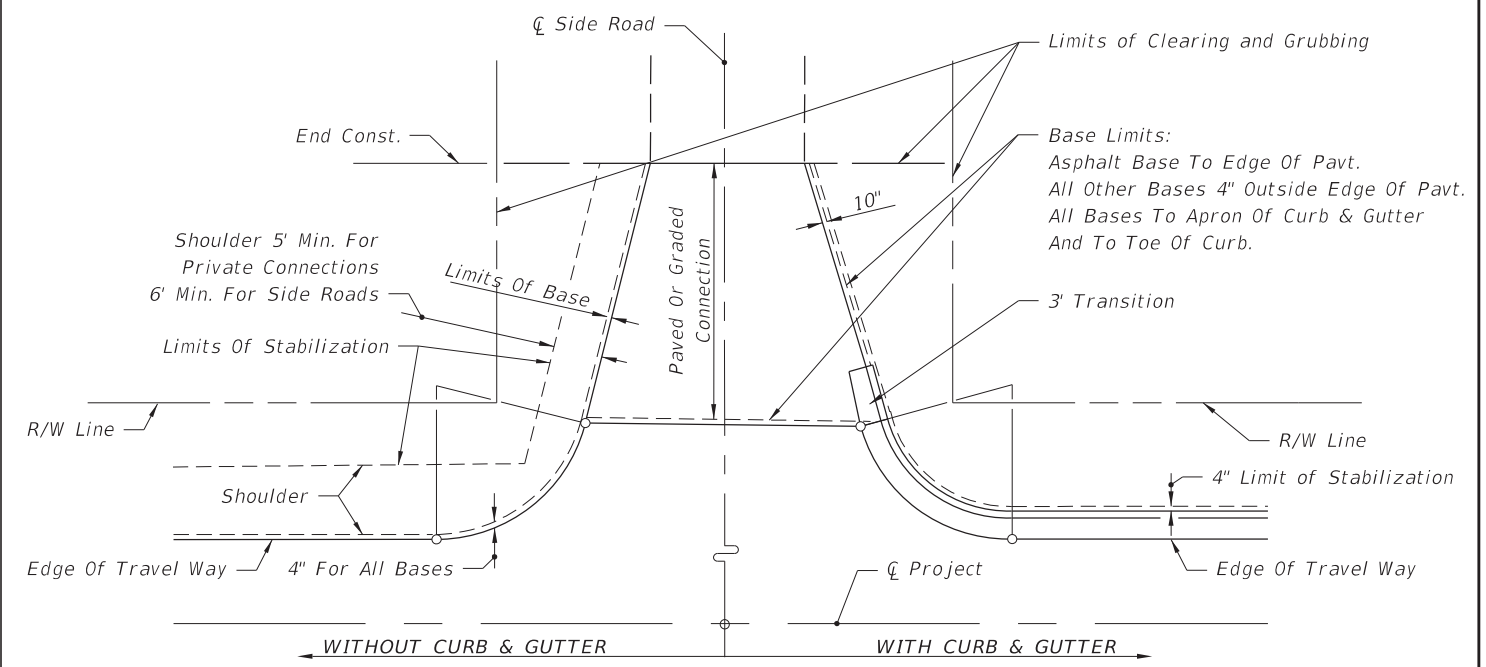
DRAINAGE SECTION



TURNOUT PROFILE AND END VIEW

FLUSH SHOULDER ROADWAY - TURNOUT CONSTRUCTION

11/01/17



LIMITS OF CLEARING & GRUBBING, STABILIZING AND BASE AT INTERSECTIONS

INTERSECTIONS NOTES:

○ Return Radius Point or Transition Point.

DRIVE ENTRANCES NOTES:

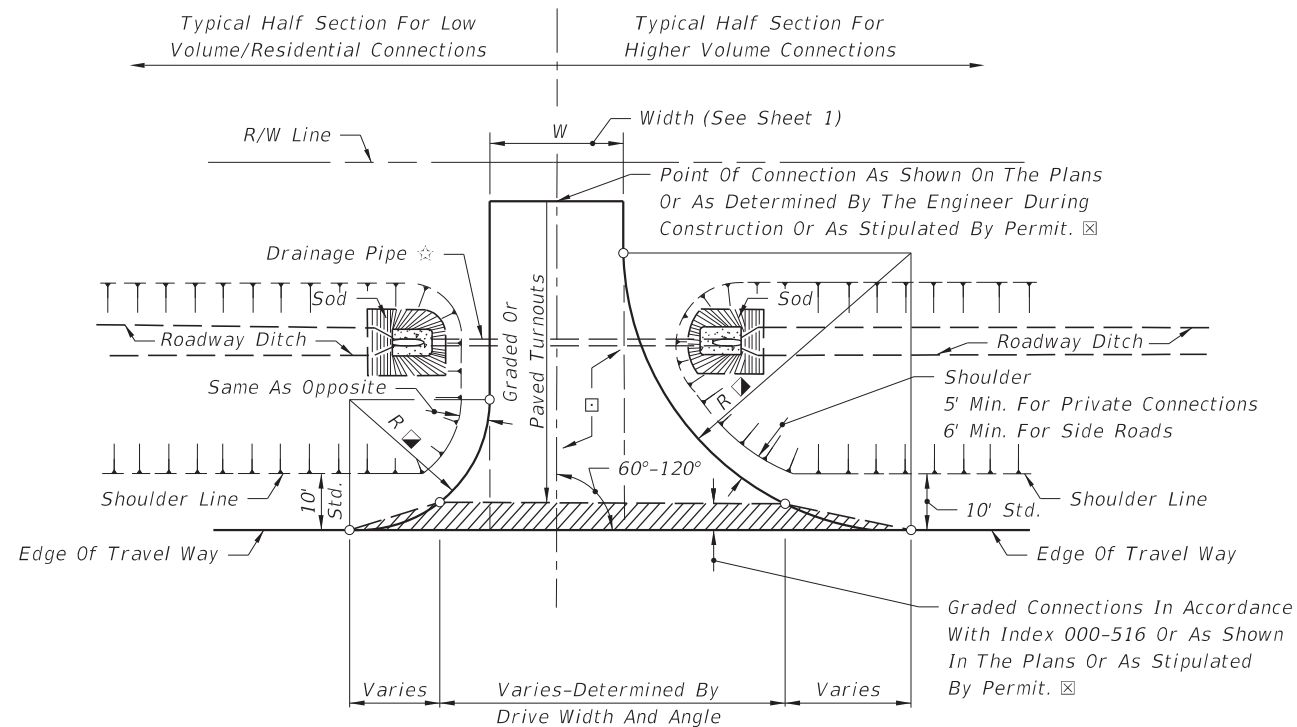
- ☆ Drainage pipe size and length shall be that shown on the plans, or as stipulated by permit, or, as determined by the Engineer during construction. The size shall be at least that established by the FDOT District, but not less than 15" diameter or equivalent. For minimum cover over drainage pipe see Specification Section 125. Pipe arch or elliptical pipe may be required to obtain necessary cover. At minimal cover applications a modified pavement apron is permitted. See 'PERMISSIBLE PAVEMENT MODIFICATION' Index 273. For spacing between adjacent pipe end treatments see Index 273.
- ☐ Stable material may be required for graded turnouts to private property as directed by the Engineer in accordance with Section 102-8 of the Standard Specifications.
- ☒ The 5' pavement at graded connections is not required where there is paved shoulder 4' or more in width. The 5' pavement requirement may be waived for connections serving one or two homes or field entrances with less than 20 trips per day, or 5 trips per hour as approved by permit or by the Engineer, or when not itemized in the plans.
Paved turnouts shall be constructed for all paved connecting facilities. The connecting point will be determined by the Engineer.
- Paved turnouts shall be constructed for all business, commercial, industrial or high volume residential graded connecting facilities. The connecting point shall be 30' from edge of travel way or at R/W line, whichever is less.
- Paved turnouts shall be constructed for all connecting facilities over 4000 vehicles per day. The connecting point shall be at the R/W line.
- See "Summary Of Geometric Requirements For Turnouts" chart for return radii lengths and supplemental information.
- Return Radius Point or Flare Point.

Changed Note.

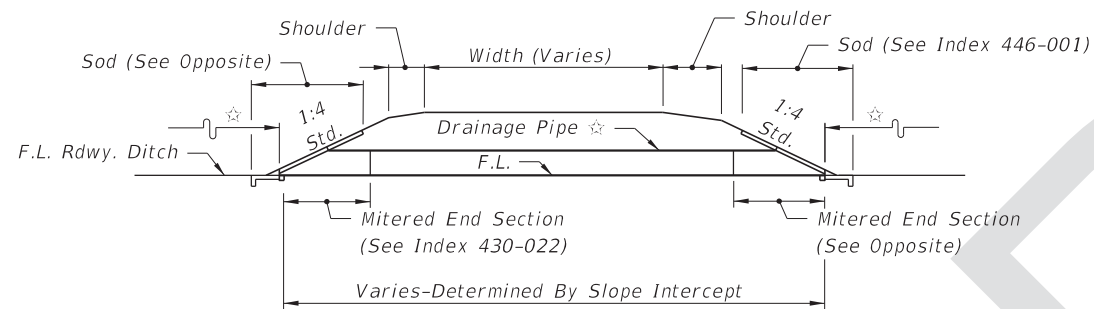
Changed All Sheets 000-515

10/12/2016 10:57:02 AM

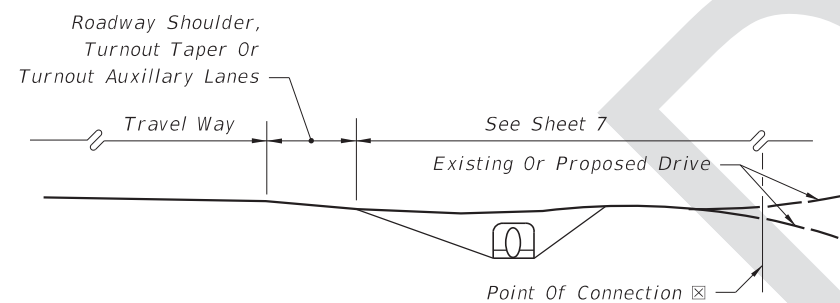
LAST REVISION	11/01/16	DESCRIPTION:		FY 2017-18 DESIGN STANDARDS	TURNOUTS AND DRIVEWAYS	INDEX NO. 515	SHEET NO. 5 of 7
---------------	----------	--------------	--	--------------------------------	------------------------	------------------	---------------------



PLAN

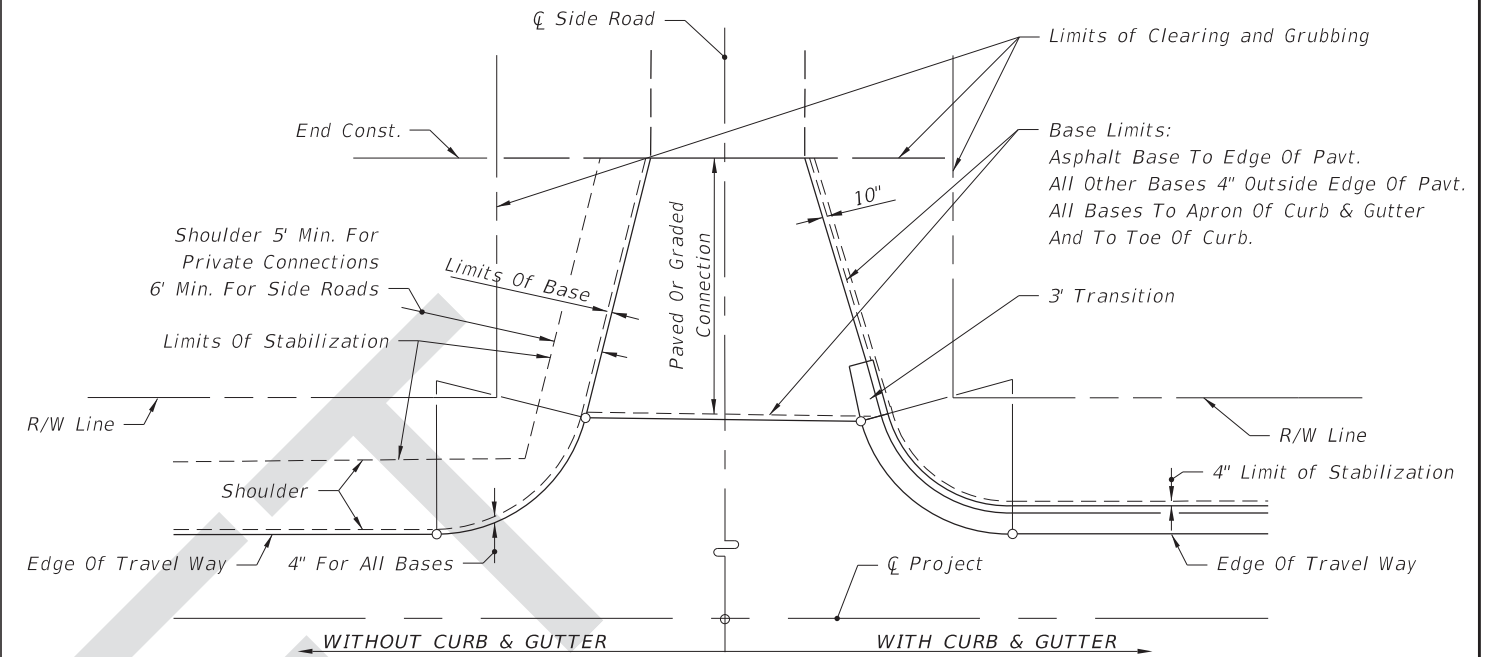


DRAINAGE SECTION



TURNOUT PROFILE AND END VIEW

FLUSH SHOULDER ROADWAY - TURNOUT CONSTRUCTION



PLAN

LIMITS OF CLEARING & GRUBBING, STABILIZING AND BASE AT INTERSECTIONS

INTERSECTIONS NOTES:

○ Return Radius Point or Transition Point.

DRIVE ENTRANCES NOTES:

☆ Drainage pipe size and length shall be that shown on the plans, or as stipulated by permit, or, as determined by the Engineer during construction. The size shall be at least that established by the FDOT District, but not less than 15" diameter or equivalent. For minimum cover over drainage pipe see Specification Section 125. Pipe arch or elliptical pipe may be required to obtain necessary cover. At minimal cover applications a modified pavement apron is permitted. See 'PERMISSIBLE PAVEMENT MODIFICATION' Index 430-022. For spacing between adjacent pipe end treatments see Index 430-022.

☐ Stable material may be required for graded turnouts to private property as directed by the Engineer in accordance with Section 102-8 of the Standard Specifications.

☒ The turnout pavement requirement at graded connections may be waived for connections serving one or two homes or field entrances with less than 20 trips per day, or 5 trips per hour as approved by permit or by the Engineer, or when not itemized in the plans.

Paved turnouts shall be constructed for all paved connecting facilities. The connecting point will be determined by the Engineer.

Paved turnouts shall be constructed for all business, commercial, industrial or high volume residential graded connecting facilities. The connecting point shall be 30' from edge of travel way or at R/W line, whichever is less.

Paved turnouts shall be constructed for all connecting facilities over 4000 vehicles per day. The connecting point shall be at the R/W line.

■ See "Summary Of Geometric Requirements For Turnouts" chart for return radii lengths and supplemental information.

○ Return Radius Point or Flare Point.

8/14/2017 1:09:53 PM

LAST REVISION 11/01/17	REVISION	DESCRIPTION:		FY 2018-19 STANDARD PLANS	TURNOUTS AND DRIVEWAYS	INDEX 000-515	SHEET 5 of 7
---------------------------	----------	--------------	--	--------------------------------------	-------------------------------	-------------------------	------------------------