

ORIGINATION FORM

Proposed Revisions to a Design Standards Index
(Please provide all information – Incomplete forms will be returned)

Contact Information:

Date: March 8, 2017
Originator: **Derwood Sheppard**
Phone: (850) 414-4334
Email: Derwood.Sheppard@dot.state.fl

Design Standards:

Index Number: **310**
Sheet Number (s): 1 of 2
Index Title: Concrete Sidewalks

Summary of the changes:

Sheet 1: Clarified Joints in the Curb Ramps in the call outs in the SIDEWALK Plan views.

Commentary / Background:

Other Affected Offices / Documents: (Provide name of responsible personnel)

- | Yes | No | |
|--------------------------|-------------------------------------|-----------------------------|
| <input type="checkbox"/> | <input checked="" type="checkbox"/> | Other Design Standards – |
| <input type="checkbox"/> | <input checked="" type="checkbox"/> | Plans Preparation Manual – |
| <input type="checkbox"/> | <input checked="" type="checkbox"/> | Basis of Estimates Manual – |
| <input type="checkbox"/> | <input checked="" type="checkbox"/> | Standard Specifications – |
| <input type="checkbox"/> | <input checked="" type="checkbox"/> | Approved Product List – |
| <input type="checkbox"/> | <input checked="" type="checkbox"/> | Construction – |
| <input type="checkbox"/> | <input checked="" type="checkbox"/> | Maintenance – |

Origination Package Includes: (Email or hand deliver package to Derwood Sheppard)

- | Yes | N/A | |
|-------------------------------------|--------------------------|-------------------------|
| <input checked="" type="checkbox"/> | <input type="checkbox"/> | Redline Mark-ups |
| <input type="checkbox"/> | <input type="checkbox"/> | Proposed IDS |
| <input type="checkbox"/> | <input type="checkbox"/> | Revised IDS |
| <input type="checkbox"/> | <input type="checkbox"/> | Other Support Documents |

Implementation:

- Design Bulletin (DSR) DCE Memo Program Mgmt. Bulletin Design Standards e-Booklet (Next Release)

————— Contact the Roadway Design Office for assistance in completing this form —————

GENERAL NOTES:

1. Construct sidewalks in accordance with Specification Section 522.
2. Include detectable warnings on sidewalk curb ramps in accordance with Index 304.
3. For TURNOUTS see Index 514.
4. Bond breaker material can be any impermeable coated or sheet membrane or preformed material having a thickness of not less than 6 mils nor more than 1/2".
5. Construct sidewalks with Edge Beam through the limits of any surface mounted Pedestrian/Bicycle Railing or Pipe Guiderail shown in the plans. (See RAILING DETAIL)
6. When roadways or driveways are newly constructed, construct the cross slopes for crosswalks and discontinuous sidewalks as follows:
 - A. Cross Slope = 0.02 for roadways or driveway controlled by "STOP" Sign or "YIELD" sign.
 - B. Cross Slope = 0.05 for roadways or driveways controlled by traffic sign.

ADDED: Use 6" concrete for Sidewalks and Curb Ramps located within Curb Returns (See Plan View). Install all other concrete with thickness as shown, unless otherwise detailed in the Plans.

CHANGED TO: 286-001

CHANGED TO: 522-002

EDITORIAL: Font Size

CLARIFICATION: Added other curb ramp to show concrete thickness

CHANGED: Turnout to Driveway-(Typ.)

CHANGED: Title

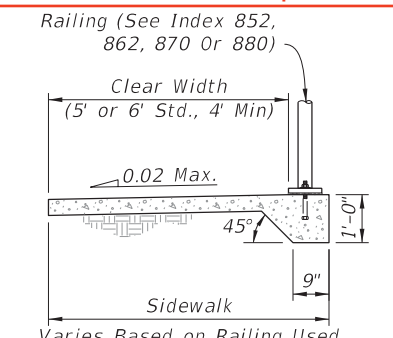
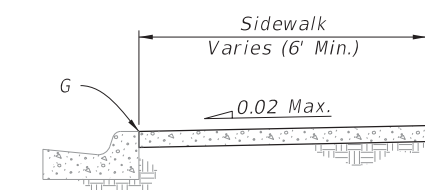
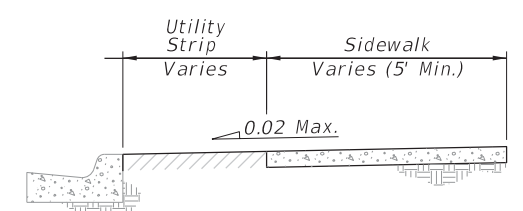
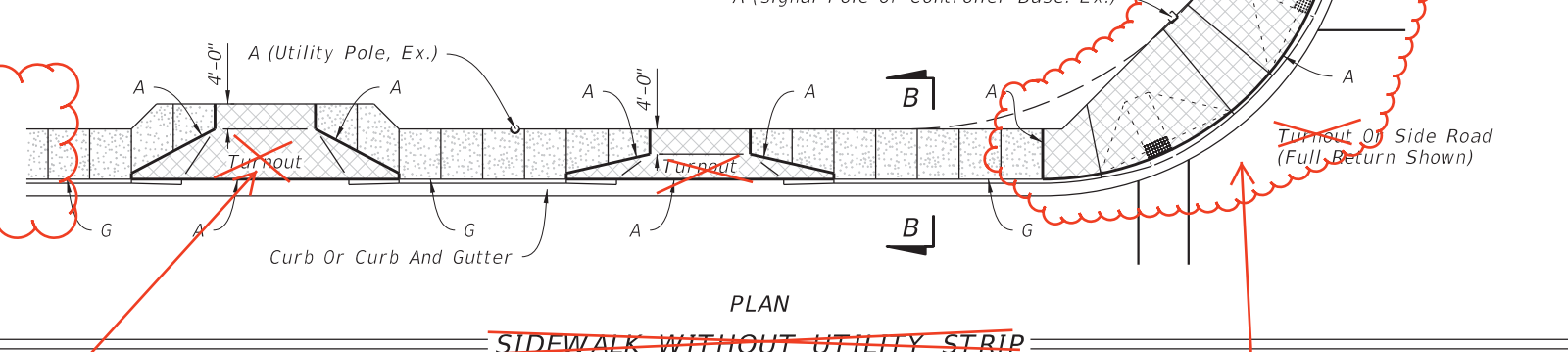
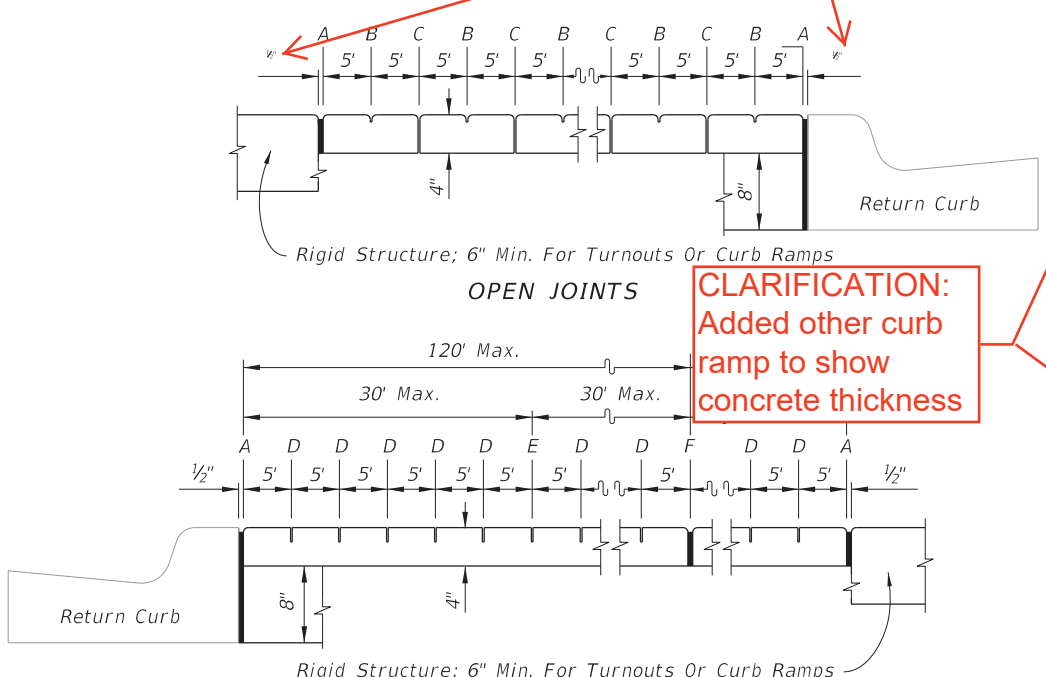
CLARIFICATION: Show other curbed option.

CHANGED TO: Driveway

ADDED: PT

CLARIFIED: See Index 522-002 for Joints

ADDED: (Without Utility Strip Similar)



LEGEND:

- A- 1/2" Expansion Joints (Preformed Joint Filler)
- B- 1/8" Dummy Joints, Tooled
- C- 1/8" Formed Open Joints
- D- 3/16" Saw Cut Joints, 1 1/2" Deep (within 96 hours) Max. 5' Centers
- E- 3/16" Saw Cut Joints, 1 1/2" Deep (within 12 hours) Max. 30' Centers Joint(s) Required When Length Exceeds 30'
- F- 1/2" Expansion Joint When Run Of Sidewalk Exceeds 120'. Intermediate locations when called for in the plans or at locations as directed by the Engineer.
- G- Cold Joint With Bond Breaker, Tooled

SIDEWALK JOINTS

GENERAL NOTES AND CONCRETE SIDEWALK ON CURBED ROADWAYS

Changed All 522-001

DS 3/8/2017

LAST REVISION	DESCRIPTION	DATE
11/01/16		
11/01/17		

FDOT FY 2017-18 DESIGN STANDARDS

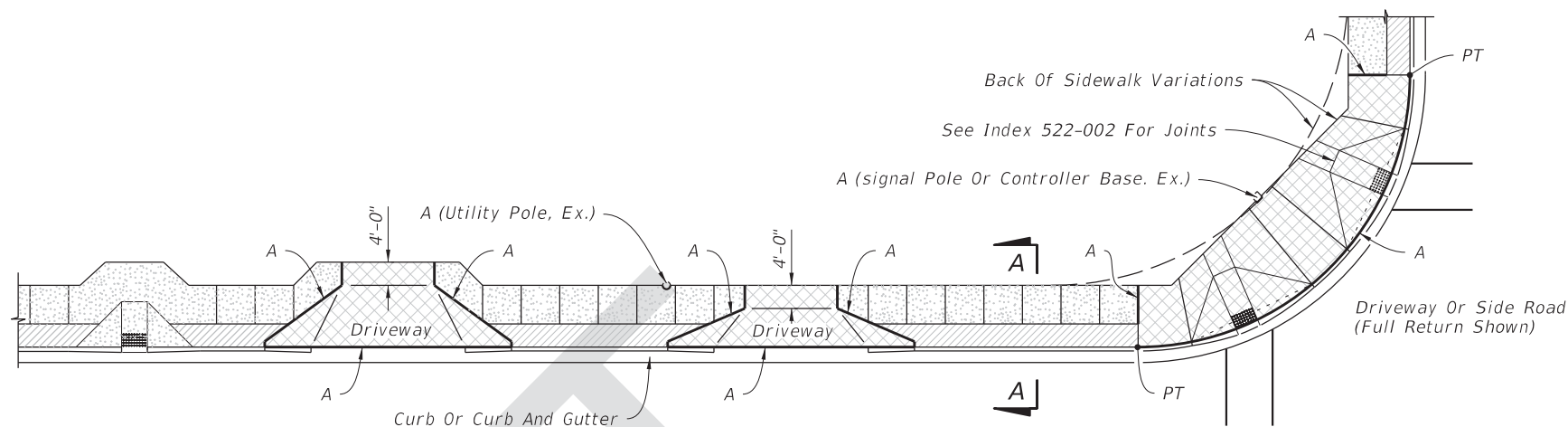
CONCRETE SIDEWALK

INDEX NO.	SHEET NO.
310	1 of 2

10/12/2016 9:35:53 AM

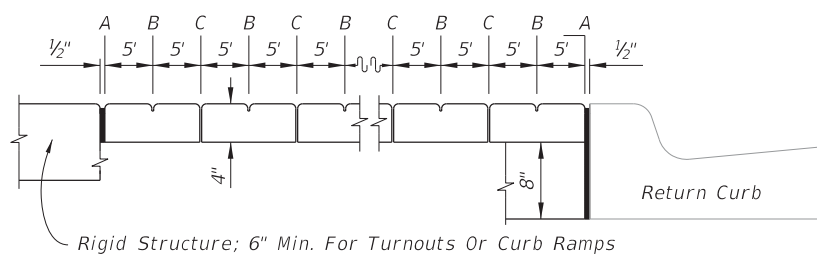
GENERAL NOTES:

1. Construct sidewalks in accordance with Specification 522. Use 6" concrete for Sidewalks and Curb Ramps Located within Curb Returns (See Plan View). Install all other concrete with thickness as shown, unless otherwise detailed in the Plans.
2. Include detectable warnings on sidewalk curb ramps in accordance with Index 522-002.
3. For TURNOUTS see Index 000-515.
4. Bond breaker material can be any impermeable coated or sheet membrane or preformed material having a thickness of not less than 6 mils not more than 1/2".
5. Construct sidewalks with Edge Beam through the limits of any surface mounted Pedestrian/Bicycle Railing or Pipe Guiderail shown in the plans. (See RAILING DETAIL)
6. When roadways or driveways are newly constructed, reconstructed or altered, construct the cross slopes for crosswalks and discontinuous sidewalks as follows:
 - A. Max. 0.02 cross slope for roadways or driveway controlled by "STOP" Sign or "YIELD" sign.
 - B. Max. 0.05 cross slope for roadways or driveways controlled by traffic signal.



PLAN

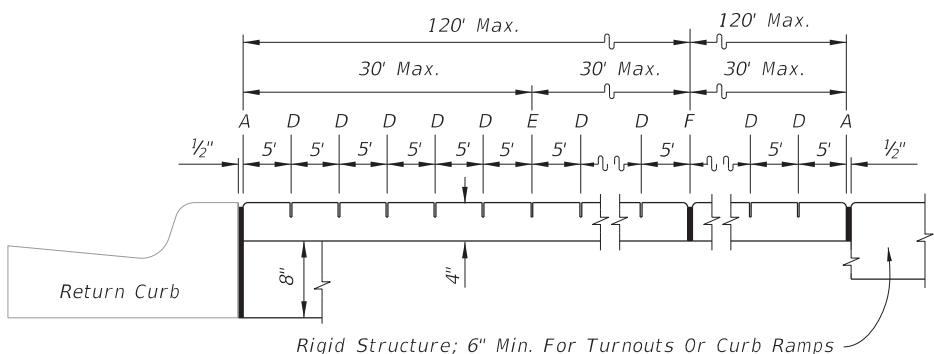
SIDEWALK WITH UTILITY STRIP



OPEN JOINTS

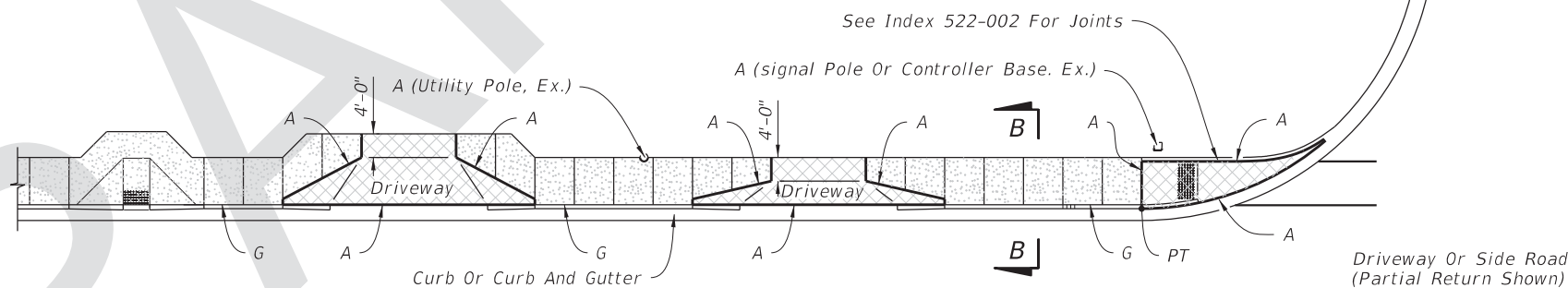
LEGEND:

- 4" Thick Sidewalk
- 6" Thick Sidewalk
- Utility Strip



SAWED JOINTS

LONGITUDINAL SECTION

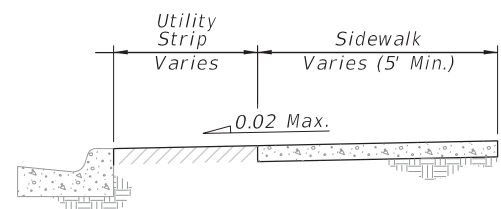


PLAN

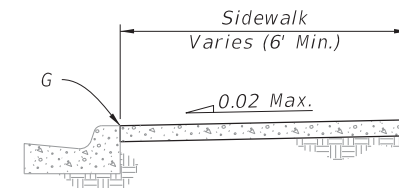
SIDEWALK WITHOUT UTILITY STRIP

LEGEND:

- A- 1/2" Expansion Joints (Preformed Joint Filler)
- B- 1/8" Dummy Joints, Tooled
- C- 1/8" Formed Open Joints
- D- 3/16" Saw Cut Joints, 1 1/2" Deep (within 96 hours) Max. 5' Centers
- E- 3/16" Saw Cut Joints, 1 1/2" Deep (within 12 hours) Max. 30' Centers Joint(s) Required When Length Exceeds 30'
- F- 1/2" Expansion Joint When Run Of Sidewalk Exceeds 120'. Intermediate locations when called for in the plans or at locations as directed by the Engineer.
- G- Cold Joint With Bond Breaker, Tooled

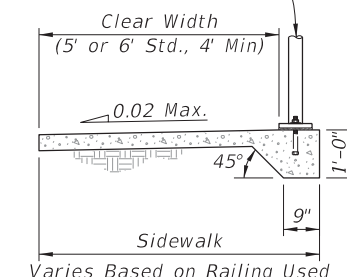


SECTION A-A



SECTION B-B

Railing (See Index 515-052, 515-062, 515-070 Or 515-080)




RAILING DETAIL

SIDEWALK JOINTS

GENERAL NOTES AND CONCRETE SIDEWALK ON CURBED ROADWAYS

8/18/2017 8:39:51 AM

LAST REVISION 11/01/17	REVISION	DESCRIPTION:	 FY 2018-19 STANDARD PLANS	CONCRETE SIDEWALK	INDEX 522-001	SHEET 1 of 2
---------------------------	----------	--------------	---	-------------------	------------------	-----------------