
Index 217 Median Barrier Inlet

ORIGINATION

Date: September 5, 2017

Name: Richard Stepp

Phone: (850) 414-4313

Email: richard.stepp@dot.state.fl.us

COMMENTARY

1. Update concrete sections and reinforcing steel for new Single-Slope Barrier. Clarify drawing labels.
2. Remove "Grate Slope & Drop Height" Table to simplify process, where only throat opening dimension governs.
3. Remove upstream and downstream throat(s). Now, only two inlet "Types" are needed (for defining inlet on one side of barrier or inlets on both sides of barrier).

COMMENTS AND RESPONSES

BLACK = Industry Review Comments **RED** = Standard Plans Response

Name: Stephanie Sharp, P.E. (TPE compiled comments)

Date: Tuesday, September 26, 2017 9:13 AM

COMMENT:

1. *Sheet 1 of 4* - Does this inlet need a general note 1 similar to Index 425-031 stating where/when it is intended to be used (median)?
2. *Sheet 1 of 4* - Regarding the removal of the throat, has this been tested to ensure it is still maintenance friendly?

RESPONSE:

Date: 10-13-2017

1. Agreed. The note layout was carried forward from the previous eBook, but we will now change this for consistency across Index 425-030 thru 425-032 for added clarity of usage with 521-001. Changes made.
2. Yes. The removal of the throat has been approved by Carl Spirio, State Drainage Engineer. Okay as-is.

Index 217 Median Barrier Inlet

Name: Hailing Zhang, P.E.

Date: Tuesday, September 26, 2017 9:13 AM

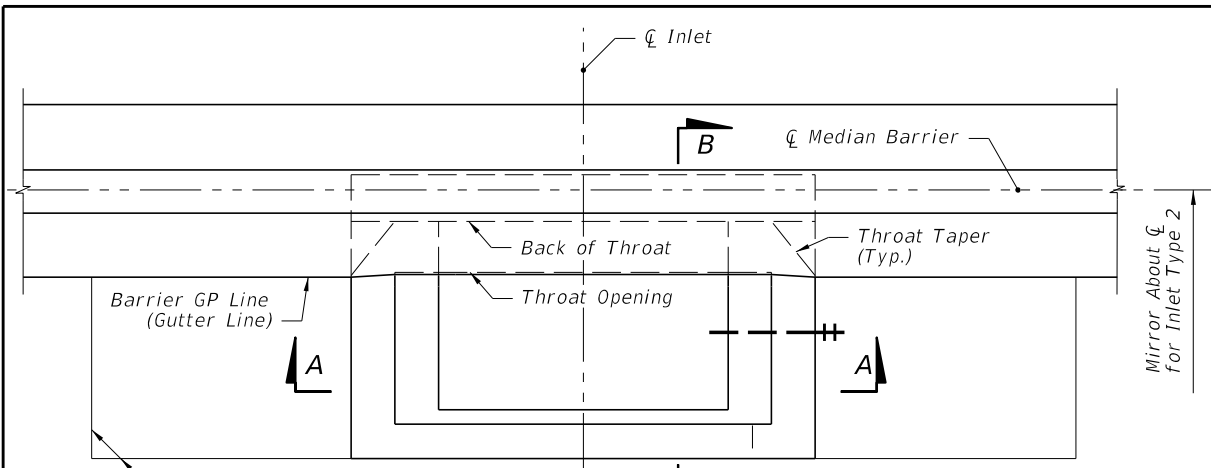
COMMENT:

425-030 Sheet 1" Is additional rebar needed at bottom of grade separated barrier section?

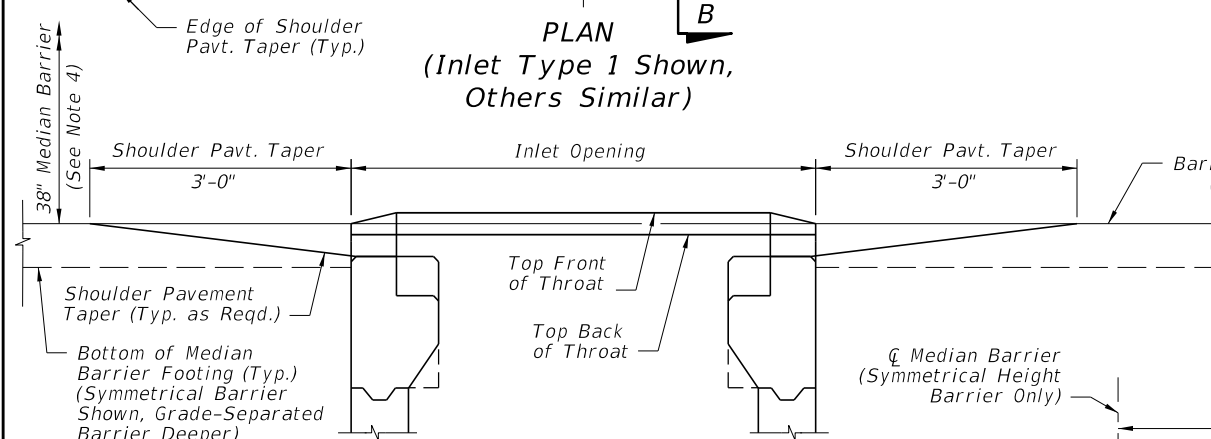
RESPONSE:

Date: 10-13-2017

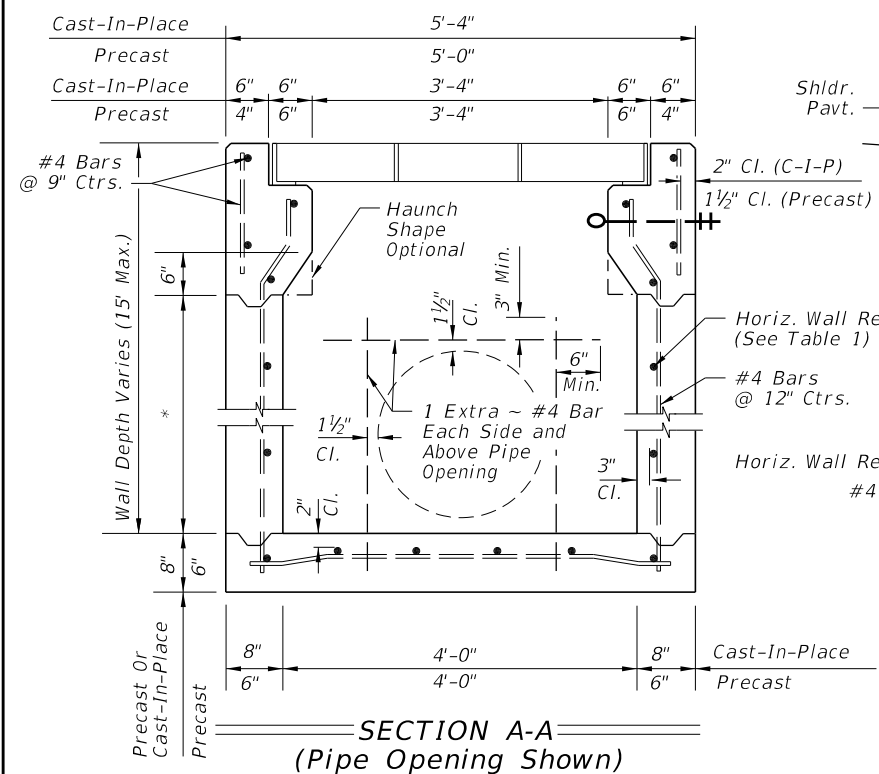
Okay as-is.



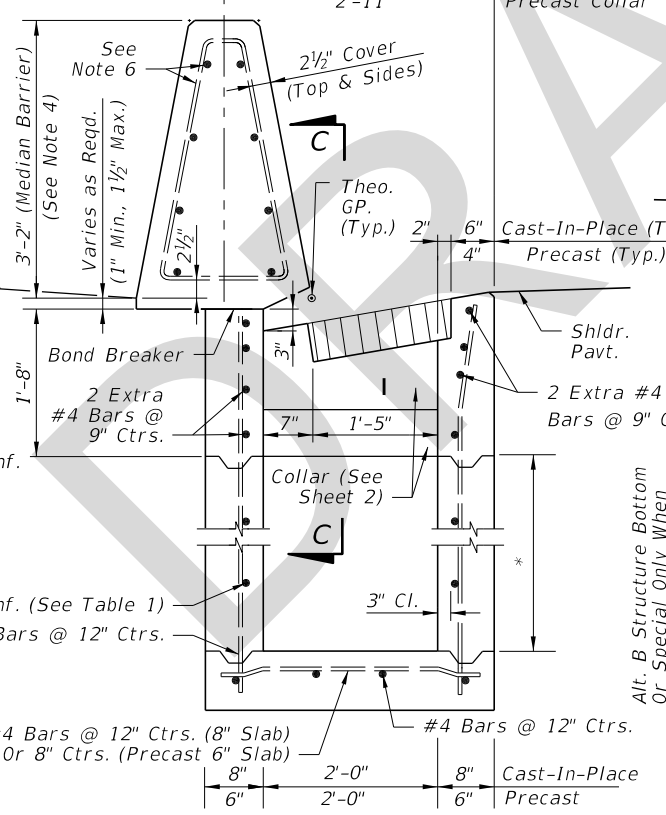
PLAN
(Inlet Type 1 Shown,
Others Similar)



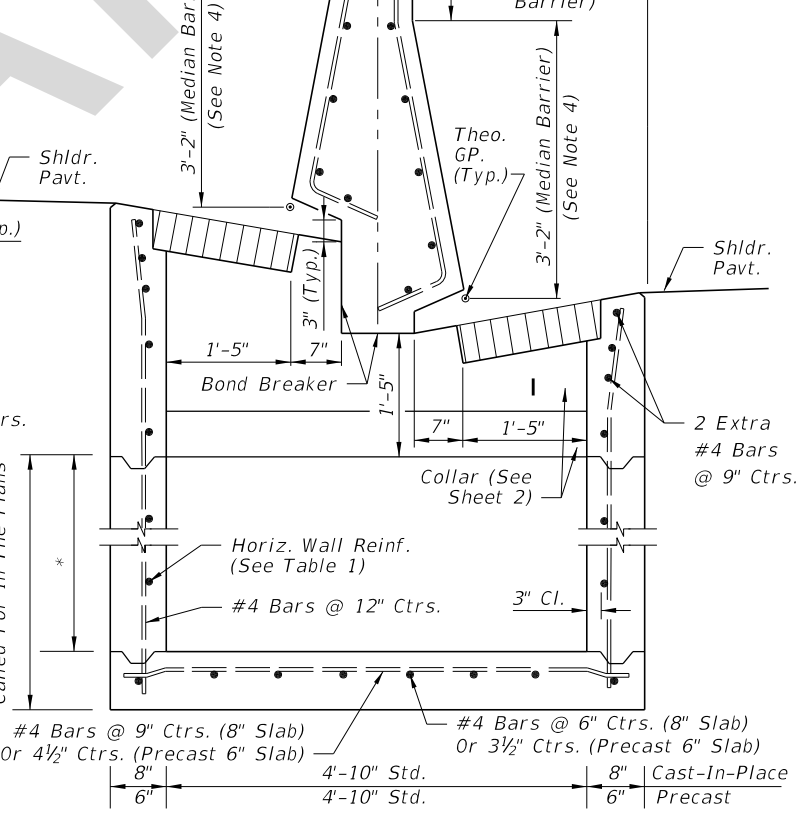
ELEVATION - VIEW C-C
(Grate Not Shown for Clarity)



SECTION A-A
(Pipe Opening Shown)



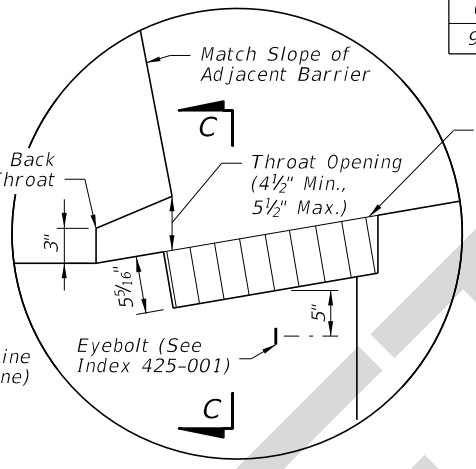
SECTION FOR INLET TYPE 1
(SYMMETRICAL HEIGHT BARRIER ONLY)



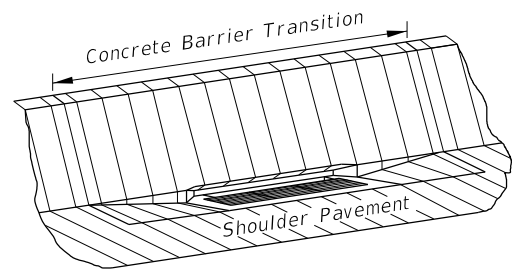
SECTION FOR INLET TYPE 2
(GRADE-SEPARATED BARRIER SHOWN,
SYMMETRICAL HEIGHT BARRIER SIMILAR)

TABLE 1: HORIZONTAL WALL REINFORCING SCHEDULE

WALL DEPTH	SCHEDULE	AREA (in. ² /ft.)	MAX. BARS	SPACING WWF
0'-3'	A12	0.20	12"	8"
3'-6'	A6	0.20	6"	5"
6'-9'	B5.5	0.24	5 1/2"	5"
9'-15'	C6.5	0.37	6 1/2"	6"



INLET DETAIL



ISOMETRIC VIEW

Refer to usage with Median Barrier in Index 521-001

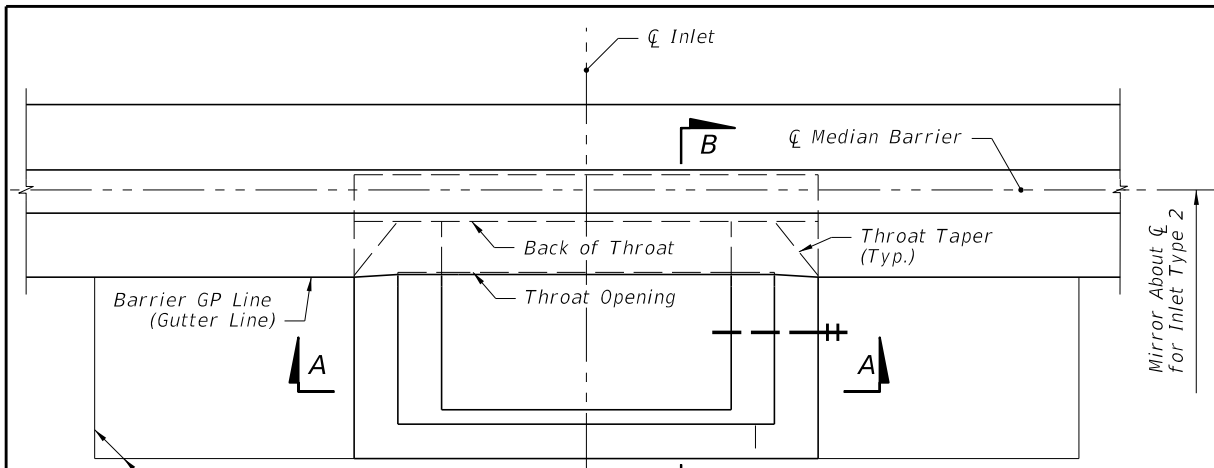
GENERAL NOTES:

- Inlet Descriptions:**
Type 1: Inlet on one side of barrier wall.
Type 2: Inlet on both sides of barrier wall.
- For grate details, see Index 425-020. The parallel bar grate shall be used unless the reticuline grate is called for in the plans. The reticuline grate shall be specified where bicycle traffic is anticipated. Used in areas of occasional pedestrian traffic. Not suitable for use in pedestrian traffic or bicycle way.
- All exposed edges and corners shall be 3/4" chamfer or tooled to 1/4" radius.
- For standard Concrete Barrier dimensions, see Index 521-001.
- Inlet wall reinforcing is Grade 60 #4 bars. The horizontal wall reinforcing must be positioned 3" from the inside face unless otherwise shown. Per Index 425-001, the equivalent area of welded wire fabric is permitted.
- Barrier reinforcing is Grade 60 #4 bars or #5 bars, as required to match the stirrups and longitudinal steel of the adjacent Concrete Barrier per Index 521-001. Barrier reinforcing steel cover may be either 2" or 2 1/2" as needed to match the adjacent barrier reinforcing cover, unless otherwise shown. Match the stirrup spacing of the adjacent barrier. Run Longitudinal steel bars over the full length of the Concrete Barrier Transition and run continuously with the longitudinal steel of the adjacent barriers, using lap splices as required.
- For supplemental details see Index 425-001.
- All dimensions are for both precast and cast-in-place inlets unless otherwise noted.
- Inlets to be paid for under the contract unit price for Inlets (Median Barrier Type), EA. Barrier wall to be paid for under the contract unit price for Concrete Barrier Wall, LF.
- Bond Breaker: One layer of ASTM D6380 Class S, Type III organic felt between inlet and barrier, including footings.

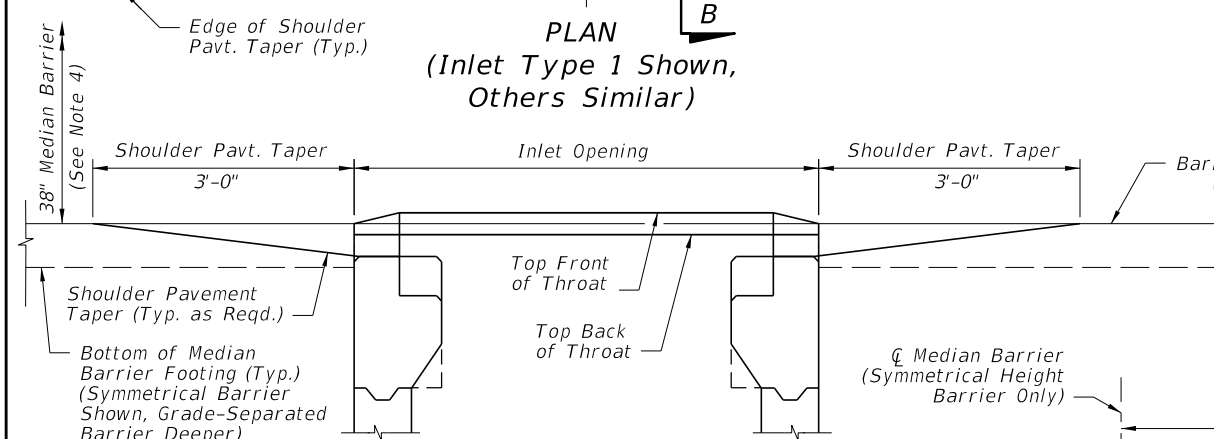
* Const. Joint Permitted Between These Limits See Index 425-001 For Min. Dimensions

SECTION B-B
(Pipe Opening Not Shown)

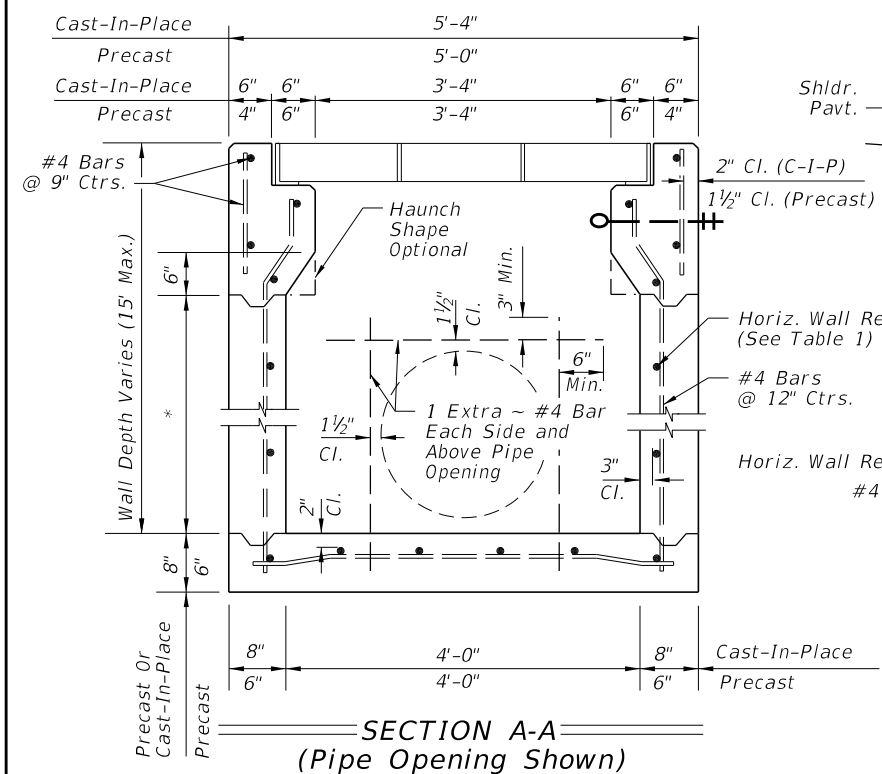
9/1/2017 3:05:43 PM



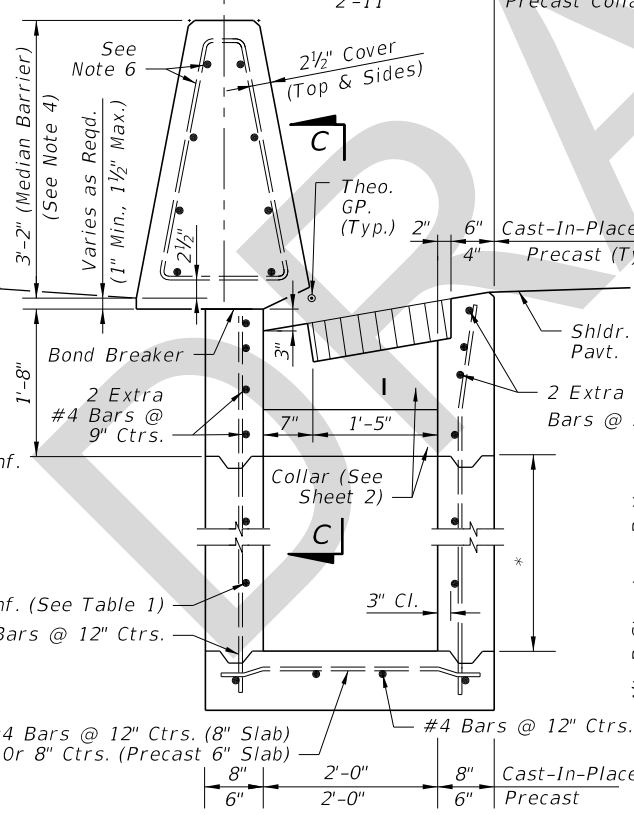
PLAN
(Inlet Type 1 Shown,
Others Similar)



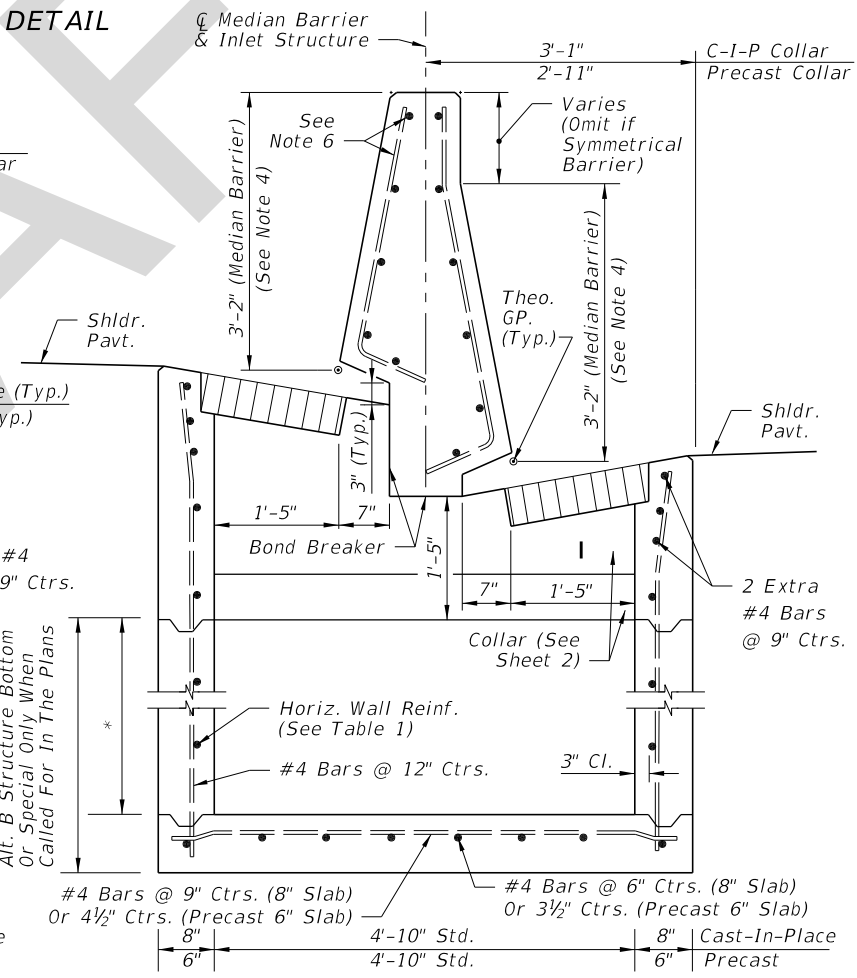
ELEVATION - VIEW C-C
(Grate Not Shown for Clarity)



SECTION A-A
(Pipe Opening Shown)



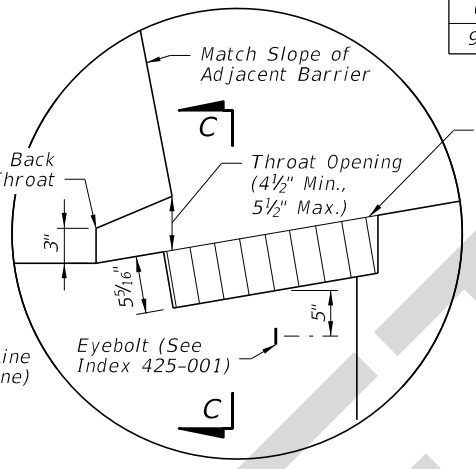
SECTION FOR INLET TYPE 1
(SYMMETRICAL HEIGHT BARRIER ONLY)



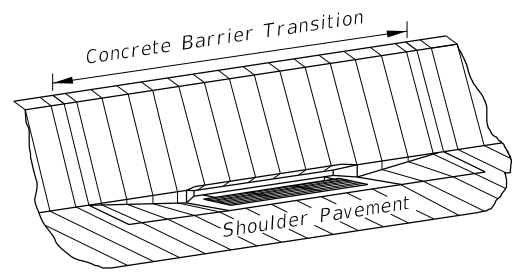
SECTION FOR INLET TYPE 2
(GRADE-SEPARATED BARRIER SHOWN,
SYMMETRICAL HEIGHT BARRIER SIMILAR)

TABLE 1: HORIZONTAL WALL REINFORCING SCHEDULE

WALL DEPTH	SCHEDULE	AREA (in. ² /ft.)	MAX. BARS	SPACING WWF
0'-3'	A12	0.20	12"	8"
3'-6'	A6	0.20	6"	5"
6'-9'	B5.5	0.24	5 1/2"	5"
9'-15'	C6.5	0.37	6 1/2"	6"



INLET DETAIL



ISOMETRIC VIEW

GENERAL NOTES:

- Where called for in the Plans, use this inlet in conjunction with Median Barrier per Index 521-001.
- Inlet Descriptions:
Type 1: Inlet on one side of Median Barrier
Type 2: Inlet on both sides of Median Barrier
- For grate details, see Index 425-020. The parallel bar grate shall be used unless the reticuline grate is called for in the plans. The reticuline grate shall be specified where bicycle traffic is anticipated. Used in areas of occasional pedestrian traffic. Not suitable for use in pedestrian traffic or bicycle way.
- All exposed edges and corners shall be 3/4" chamfer or tooled to 1/4" radius.
- For standard Median Barrier dimensions and requirements, see Index 521-001.
- Inlet wall reinforcing is Grade 60 #4 bars. The horizontal wall reinforcing must be positioned 3" from the inside face unless otherwise shown. Per Index 425-001, the equivalent area of welded wire fabric is permitted.
- Barrier reinforcing is Grade 60 #4 bars or #5 bars, as required to match the stirrups and longitudinal steel of the adjacent Concrete Barrier per Index 521-001. Barrier reinforcing steel cover may be either 2" or 2 1/2" as needed to match the adjacent barrier reinforcing cover, unless otherwise shown. Match the stirrup spacing of the adjacent barrier. Run Longitudinal steel bars over the full length of the Concrete Barrier Transition and run continuously with the longitudinal steel of the adjacent barriers; use lap splices as required.
- For supplemental details see Index 425-001.
- All dimensions are for both precast and cast-in-place inlets unless otherwise noted.
- Inlets to be paid for under the contract unit price for Inlets (Median Barrier Type), EA. Concrete Barrier to be paid for under the contract unit price for Concrete Barrier, LF.
- Bond Breaker: One layer of ASTM D6380 Class S, Type III organic felt between inlet and barrier, including footings.

* Const. Joint Permitted Between These Limits See Index 425-001 For Min. Dimensions

10/13/2017 4:32:23 PM