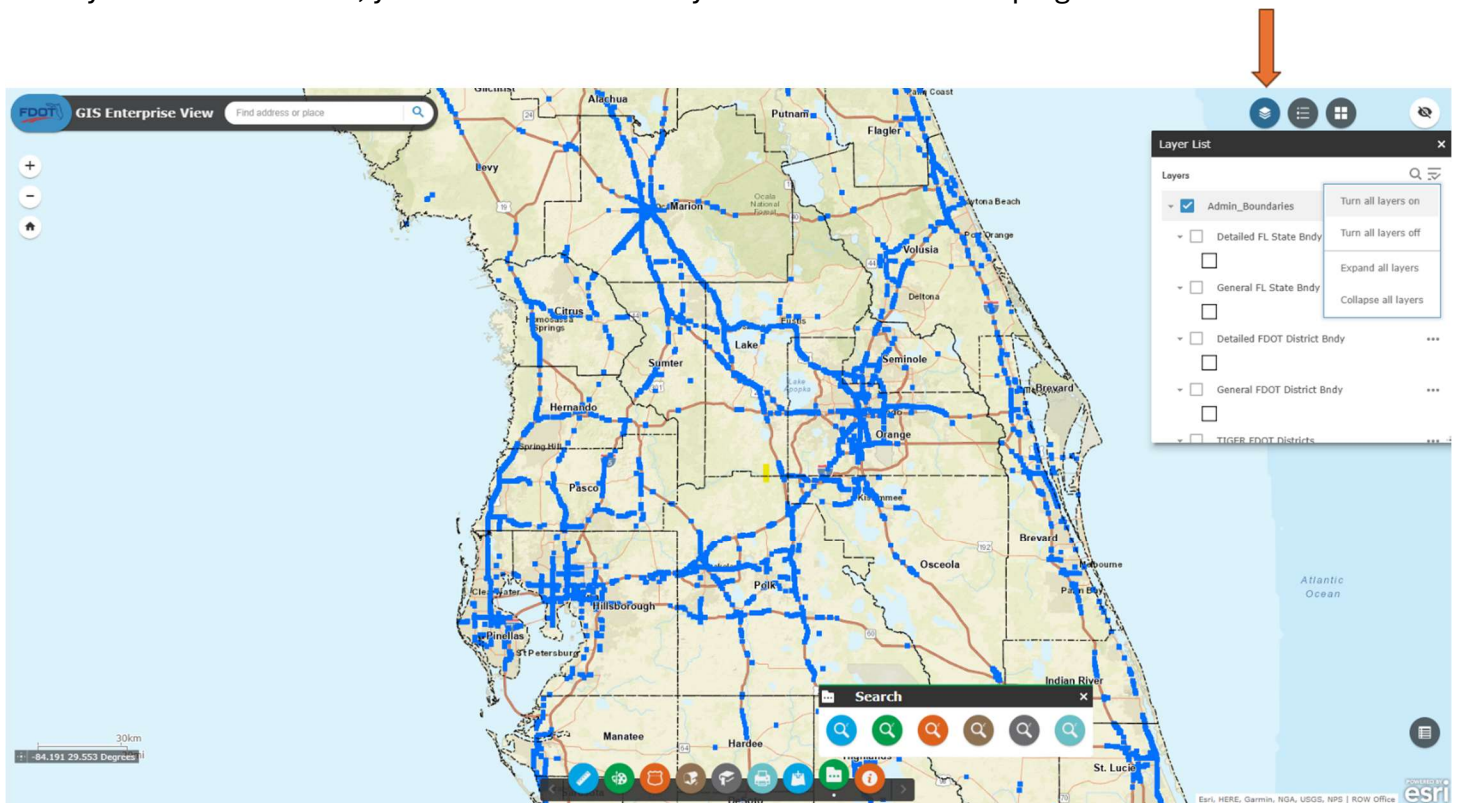
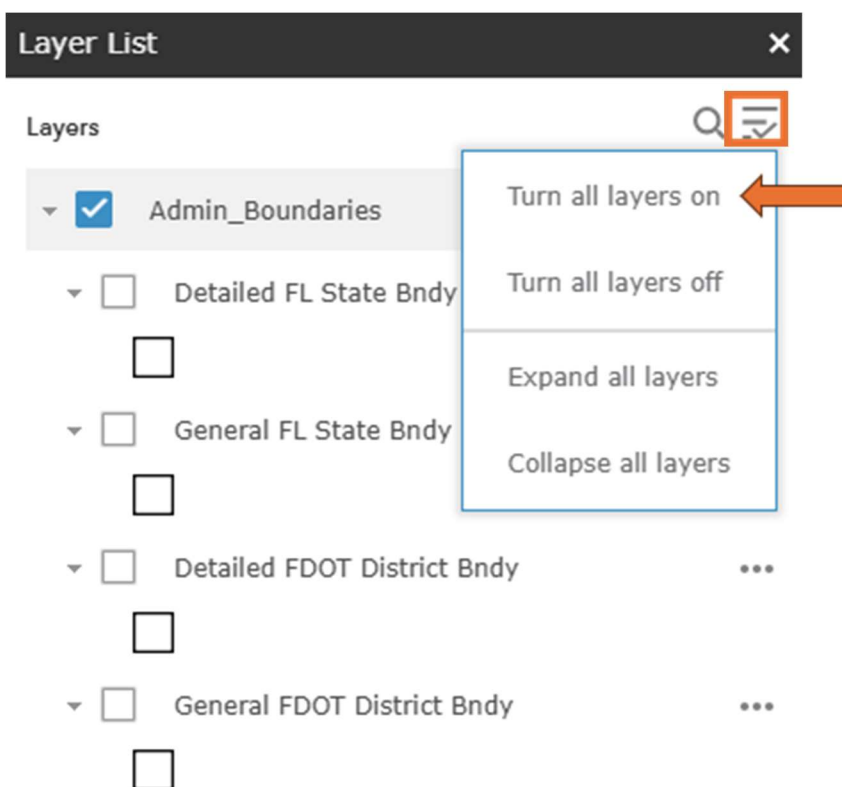


Instructions for GIS Link

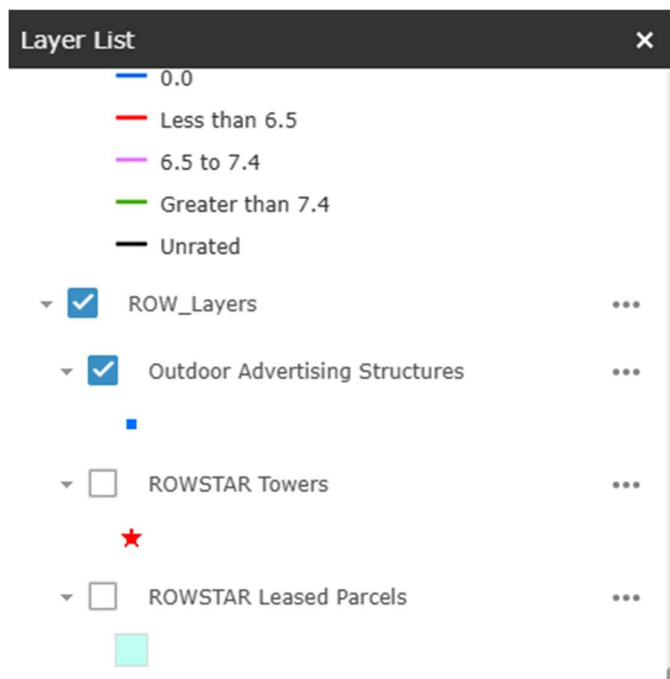
Once you click on the link, you can click on the “layer list” button in the top right corner of the screen.



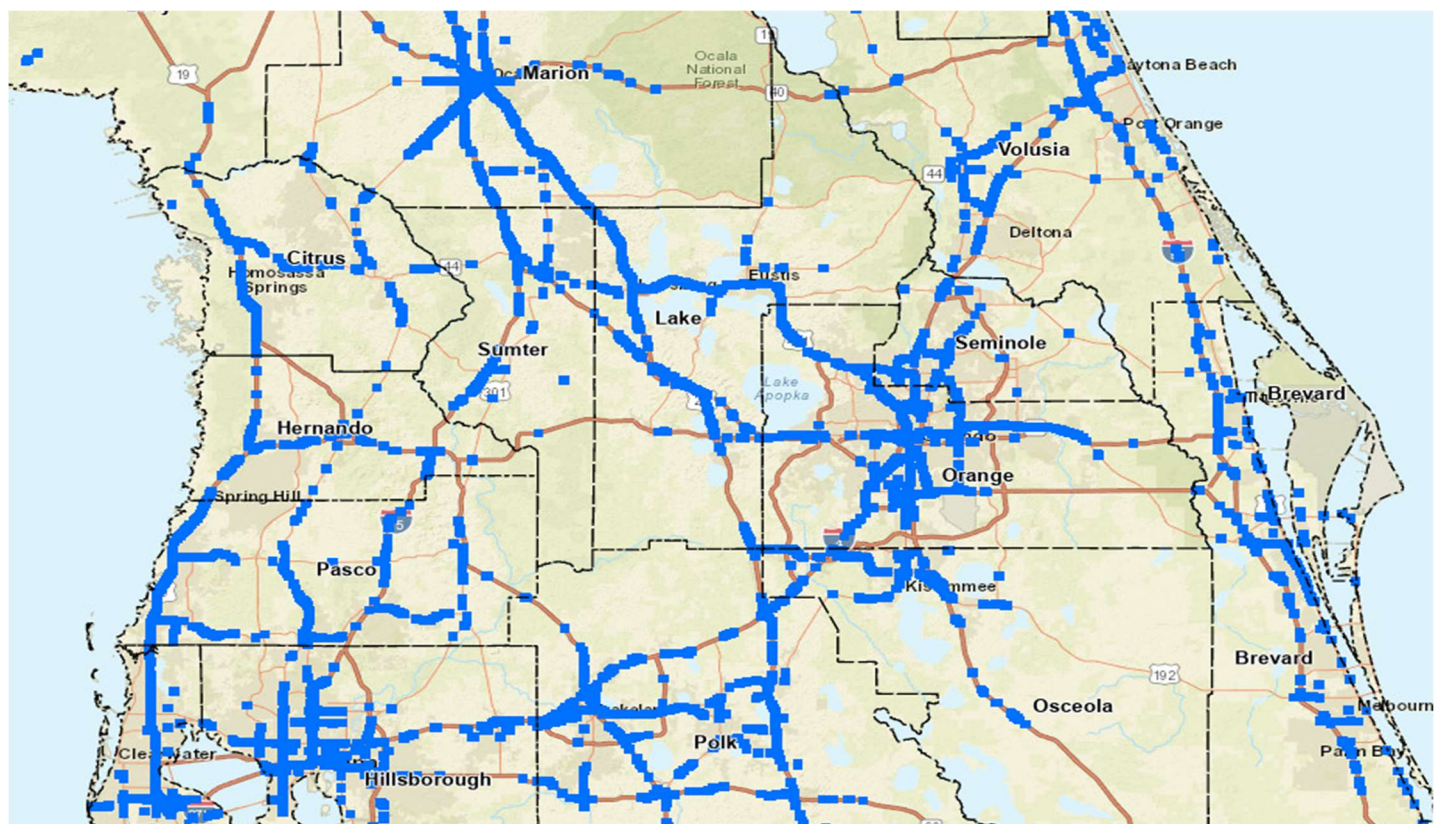
Then you can click on the highlighted icon in the top right corner, which drops down the list below. Select “Turn all layers on.”



Scroll down in the layer list and you can click on the “ROW_Layers” and “Outdoor Advertising Structures”



The blue dots populated are all the outdoor sign structures.



From there, you can zoom in to the roadway you are looking for and click on the dot to expand information about the sign.

