

Florida East Coast Corridor Trespassing Mitigation Project

Crossings

-  Dynamic Envelope
-  R8-8 Signage
-  Crisis Signage
-  Delineators, RPMs, and Edge Stripe




Channelization

-  Fencing







Schools

-  Kindergarden
-  Primary School
-  Secondary School
-  College and Adult Education

Incidents

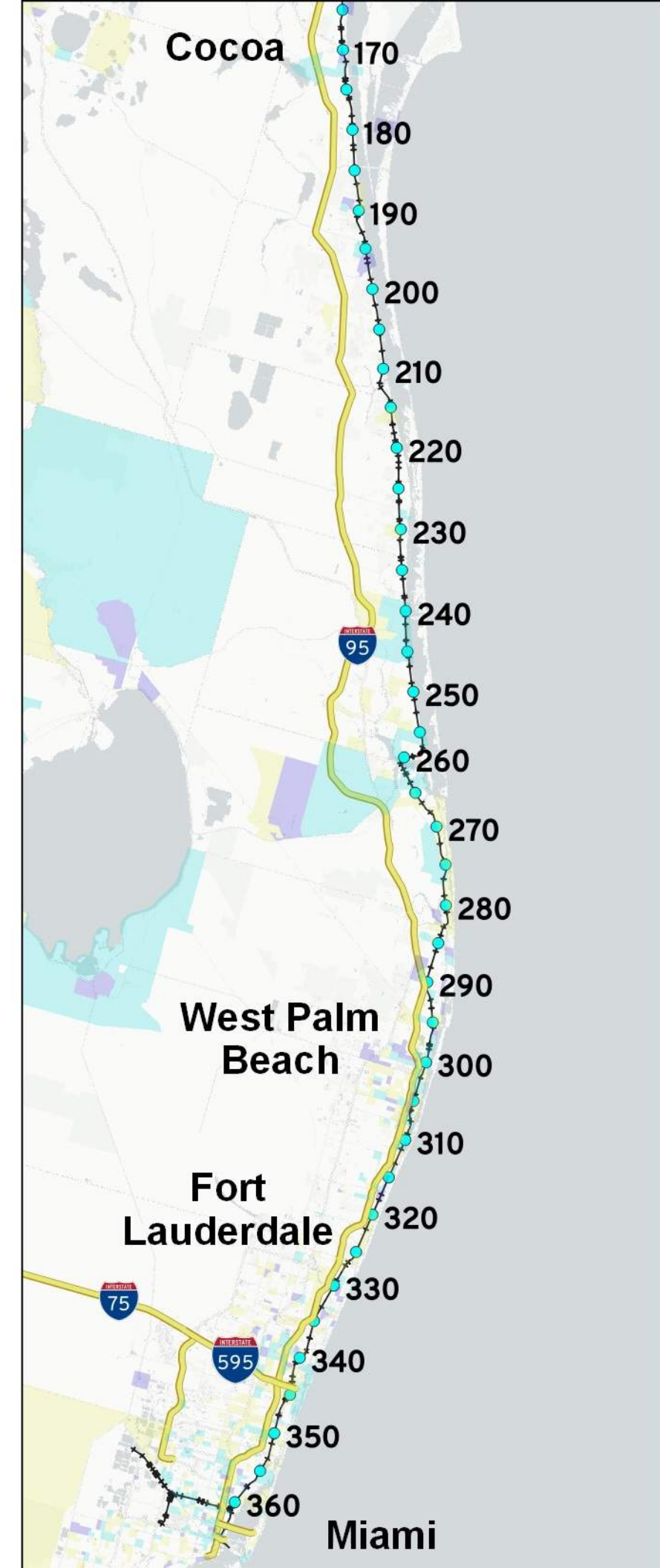
-  Suicide
-  Trespass-Fatality
-  Trespass-Injury

Zones

-  Historically Disadvantaged Community (HDC)
-  Persistent Poverty (PP)
-  HDC & PP
-  Empowerment Zones
-  Parks
-  Urban Areas

Reference Locations

-  At-Grade Crossing
-  FEC Milepost



LEGEND 0 250 500 ft




Crossings

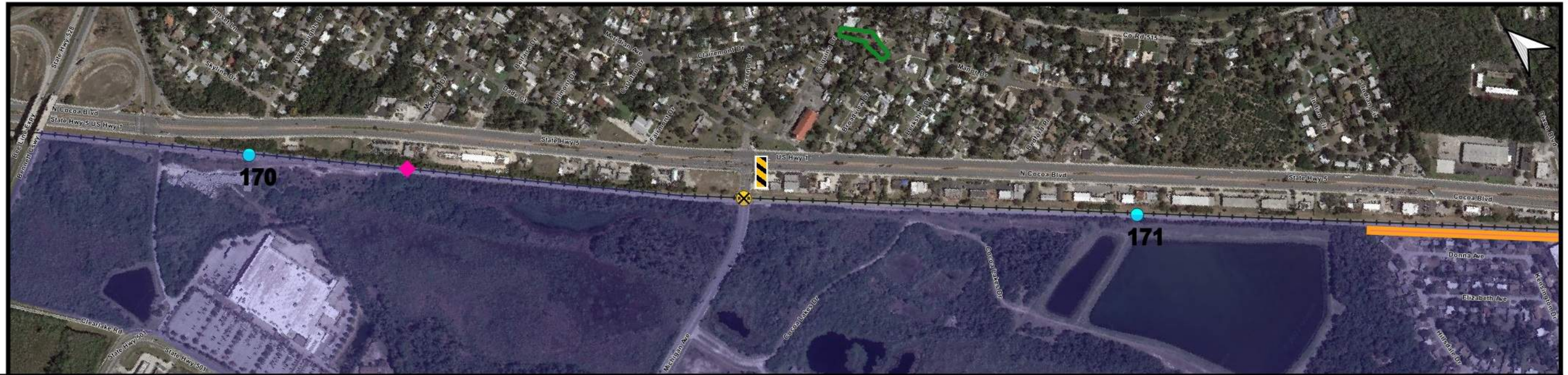
-  Dynamic Envelope
-  R8-8 Signage
-  Crisis Signage
-  Delineators, RPMs, and Edge Stripe

Channelization

-  Fencing

Incidents

-  Suicide
-  Trespass-Fatality
-  Trespass-Injury



LEGEND 0 250 500 ft



Crossings

- Dynamic Envelope
- R8-8 Signage
- Crisis Signage
- Delineators, RPMs, and Edge Stripe

Channelization

- Fencing

Incidents

- Suicide
- Trespass-Fatality
- Trespass-Injury



LEGEND 0 250 500 ft



Crossings

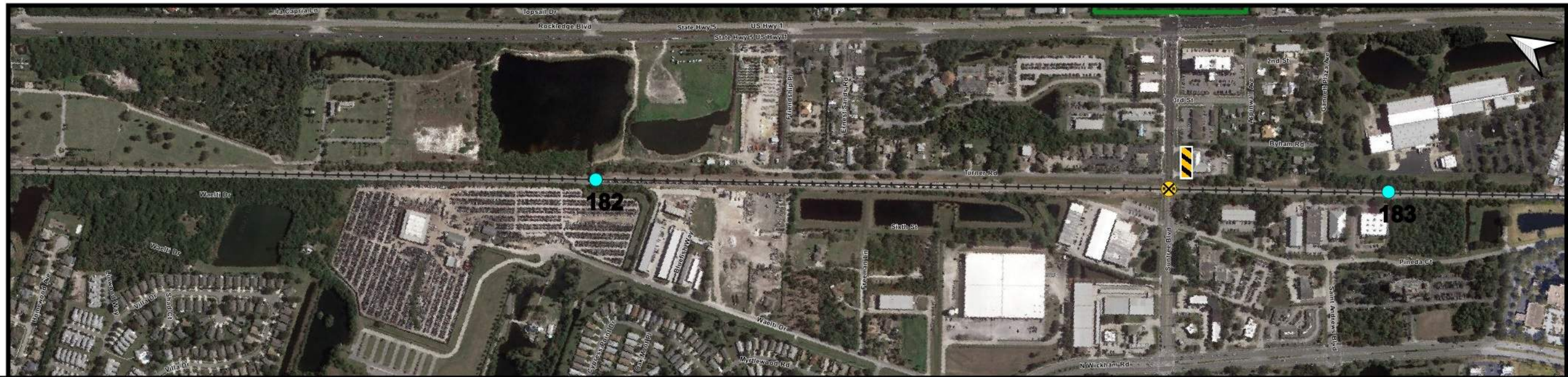
- Dynamic Envelope
- R8-8 Signage
- Crisis Signage
- Delineators, RPMs, and Edge Stripe

Channelization

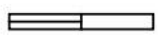
- Fencing

Incidents

- Suicide
- Trespass-Fatality
- Trespass-Injury



LEGEND 0 250 500 ft



Crossings

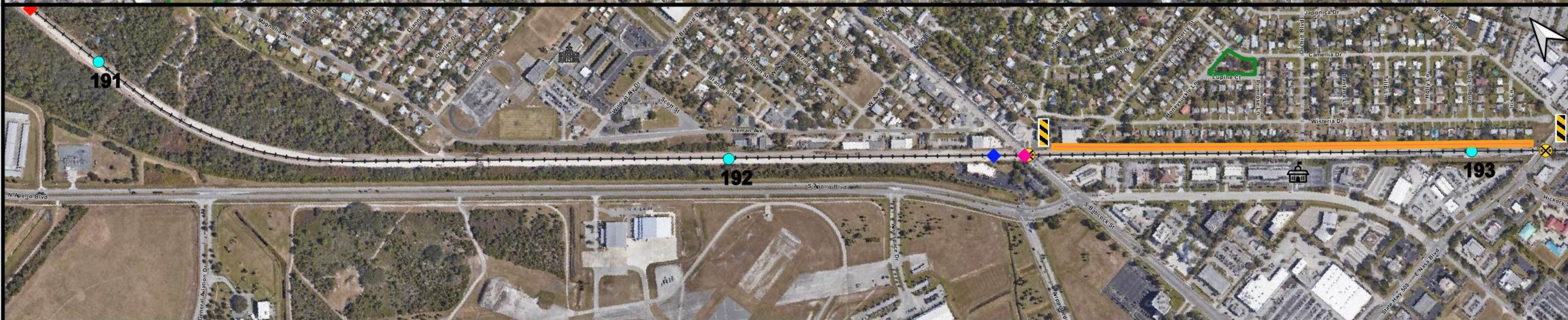
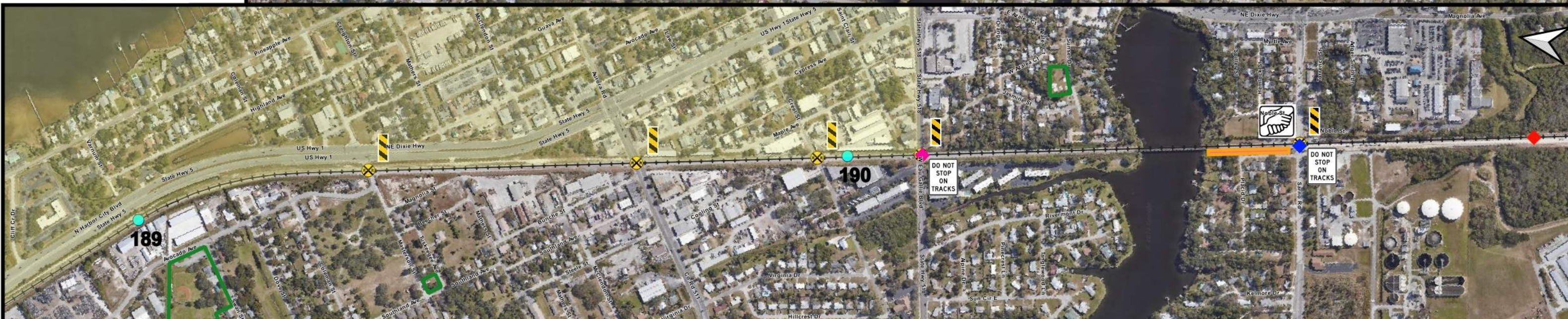
- Dynamic Envelope
- R8-8 Signage
- Crisis Signage
- Delineators, RPMs, and Edge Stripe

Channelization

- Fencing

Incidents

- Suicide
- Trespass-Fatality
- Trespass-Injury



LEGEND 0 250 500 ft




Crossings

-  Dynamic Envelope
-  R8-8 Signage
-  Crisis Signage
-  Delineators, RPMs, and Edge Stripe

Channelization

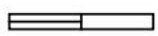
-  Fencing

Incidents

-  Suicide
-  Trespass-Fatality
-  Trespass-Injury



LEGEND 0 250 500 ft



Crossings

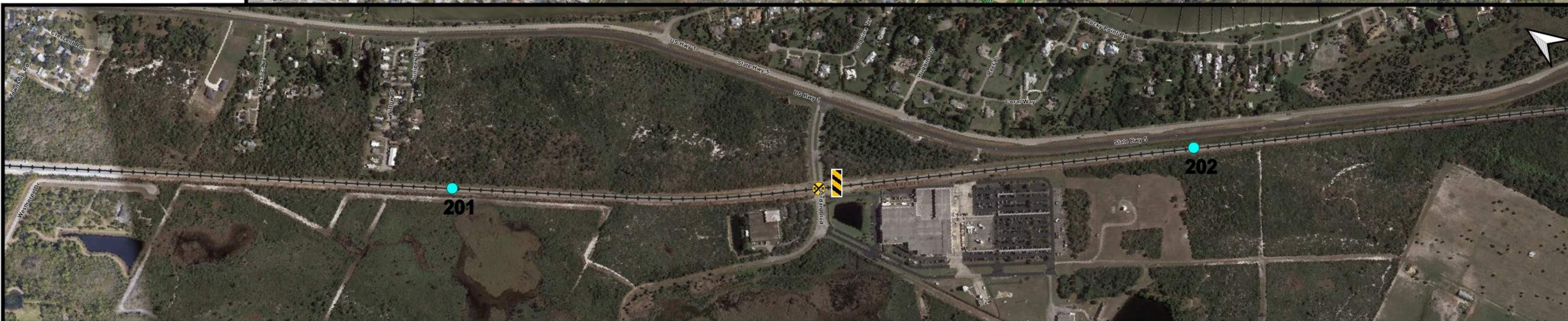
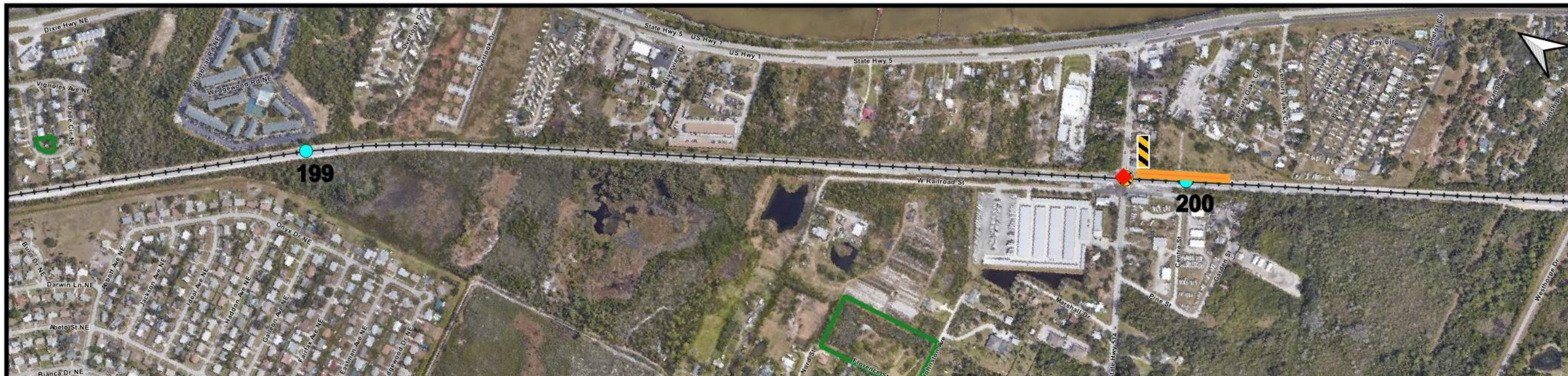
- Dynamic Envelope
- R8-8 Signage
- Crisis Signage
- Delineators, RPMs, and Edge Stripe

Channelization

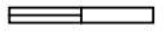
- Fencing

Incidents

- Suicide
- Trespass-Fatality
- Trespass-Injury



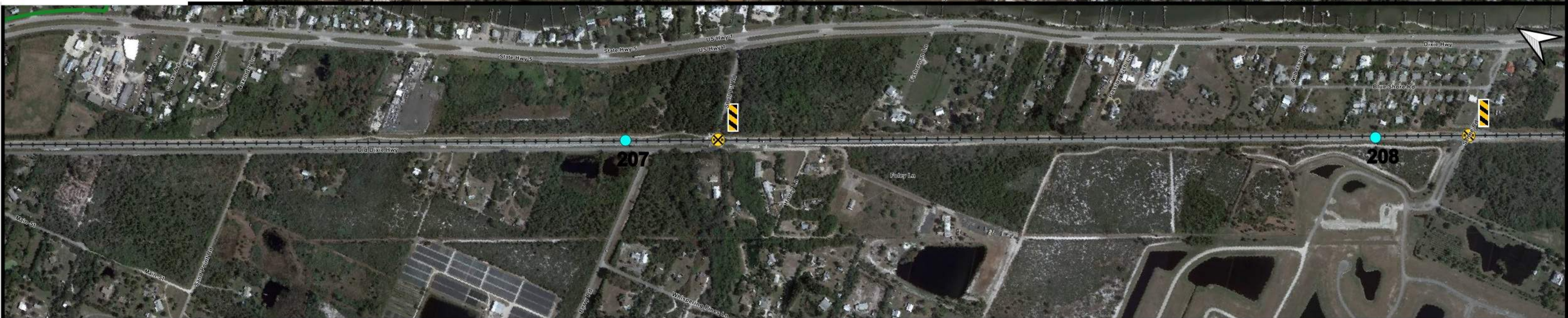
LEGEND 0 250 500 ft



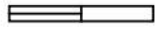
- Crossings**
- Dynamic Envelope
 - R8-8 Signage
 - Crisis Signage
 - Delineators, RPMs, and Edge Stripe

- Channelization**
- Fencing

- Incidents**
- Suicide
 - Trespass-Fatality
 - Trespass-Injury



LEGEND 0 250 500 ft



Crossings

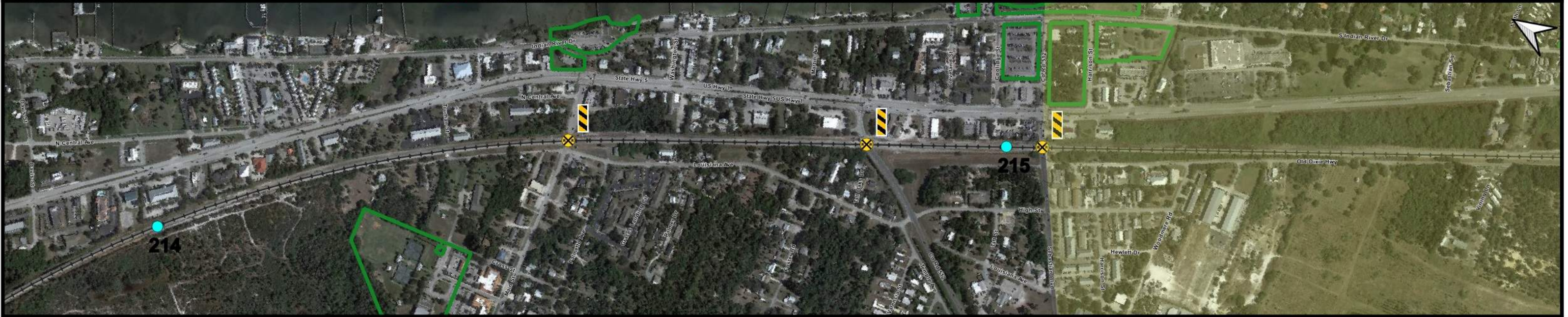
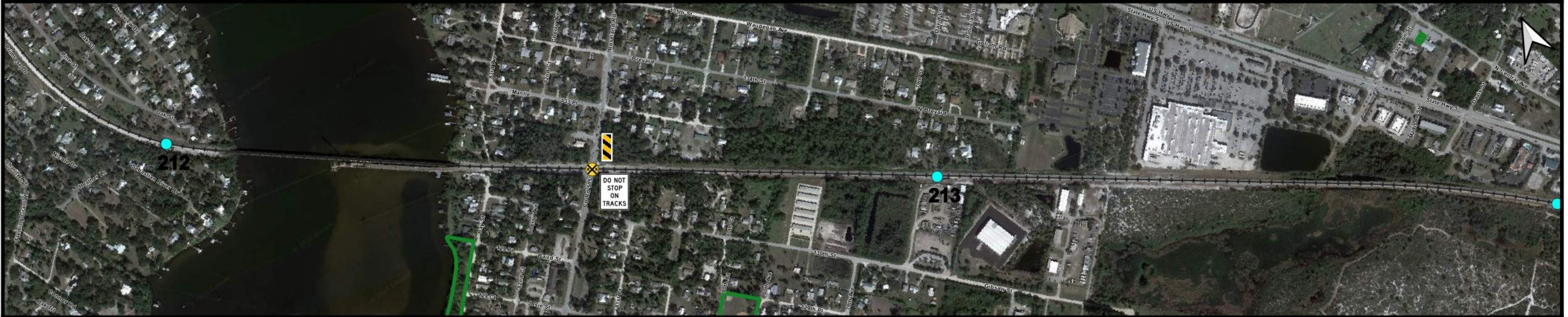
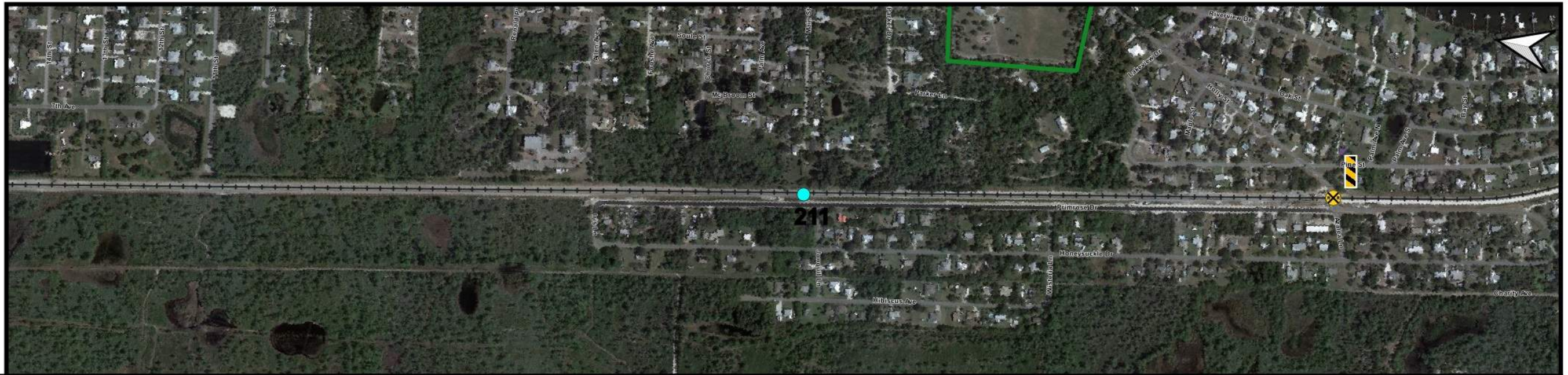
- Dynamic Envelope
- R8-8 Signage
- Crisis Signage
- Delineators, RPMs, and Edge Stripe

Channelization

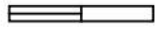
- Fencing

Incidents

- Suicide
- Trespass-Fatality
- Trespass-Injury



LEGEND 0 250 500 ft



Crossings

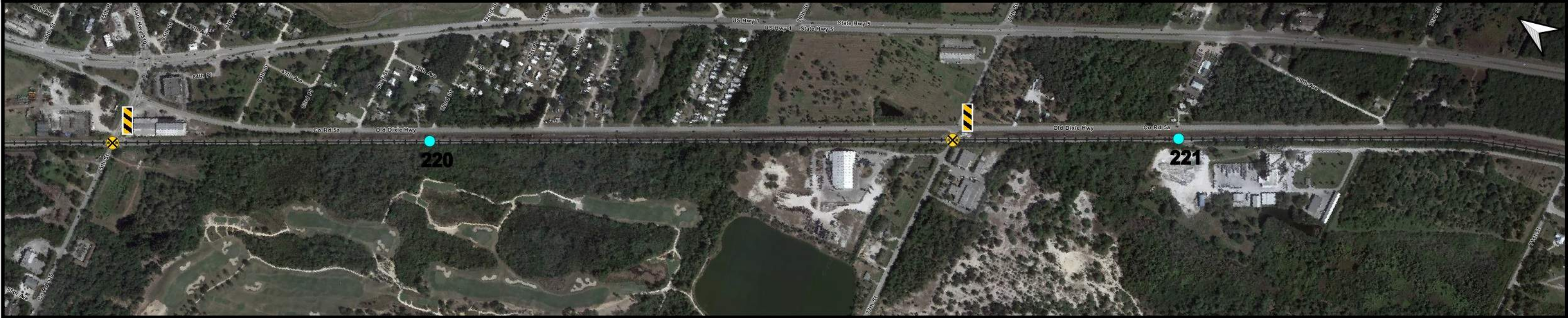
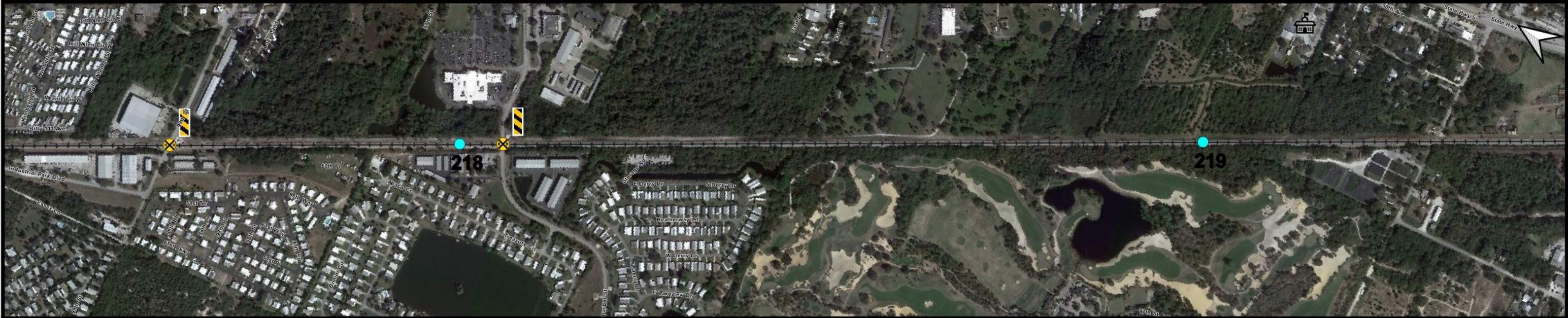
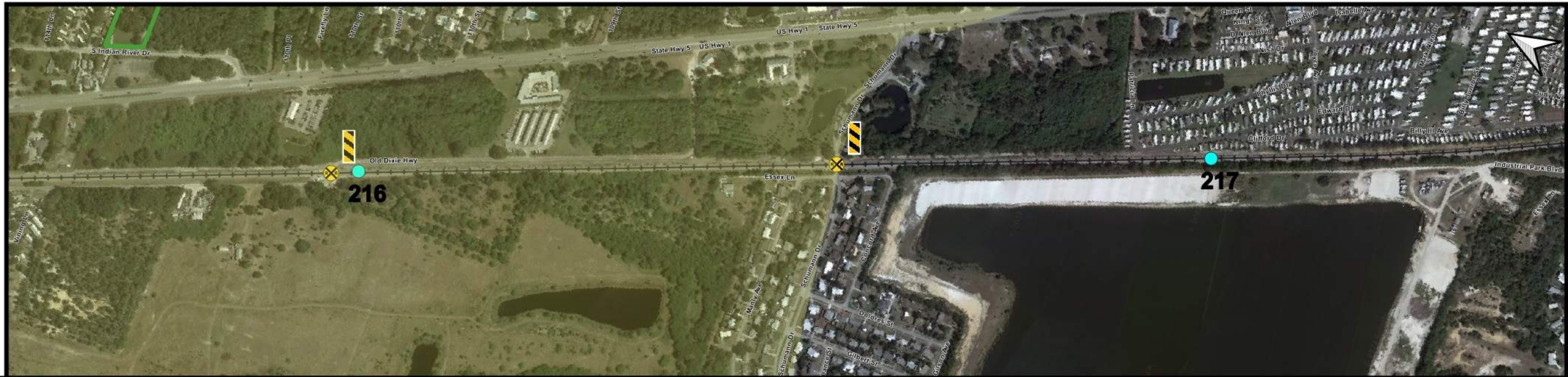
- Dynamic Envelope
- R8-8 Signage
- Crisis Signage
- Delineators, RPMs, and Edge Stripe

Channelization

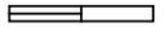
- Fencing

Incidents

- Suicide
- Trespass-Fatality
- Trespass-Injury



LEGEND 0 250 500 ft



Crossings

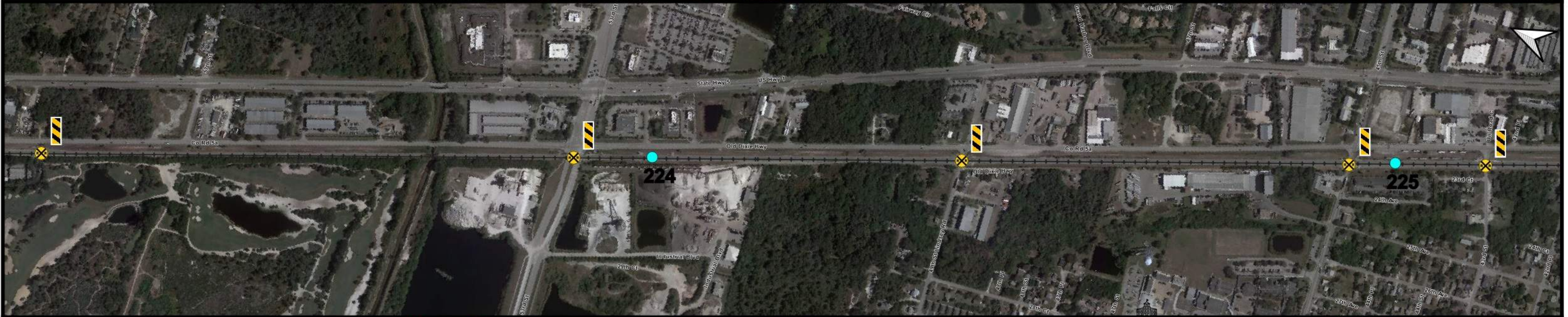
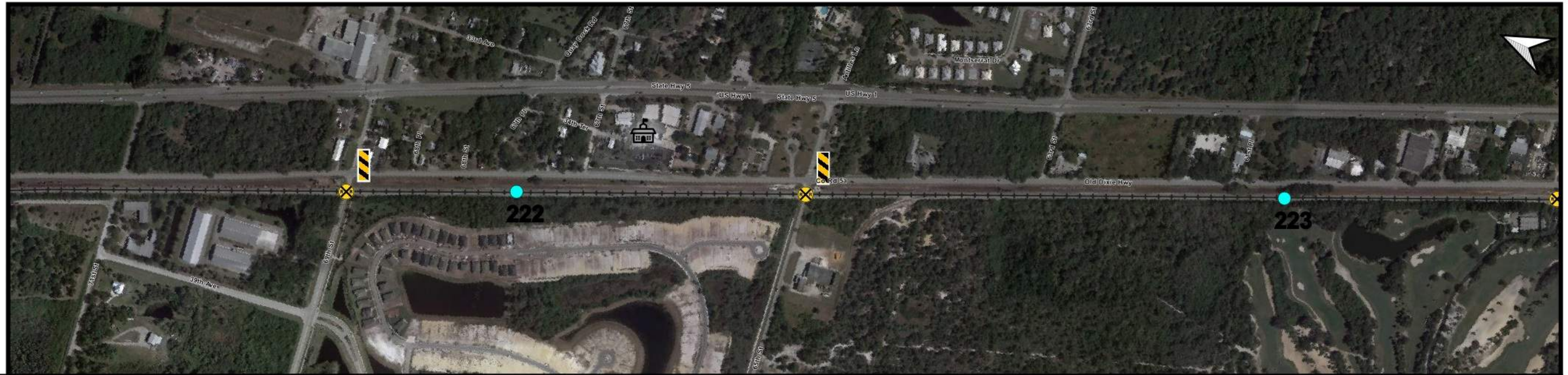
- Dynamic Envelope
- R8-8 Signage
- Crisis Signage
- Delineators, RPMs, and Edge Stripe

Channelization

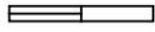
- Fencing

Incidents

- Suicide
- Trespass-Fatality
- Trespass-Injury



LEGEND 0 250 500 ft



Crossings

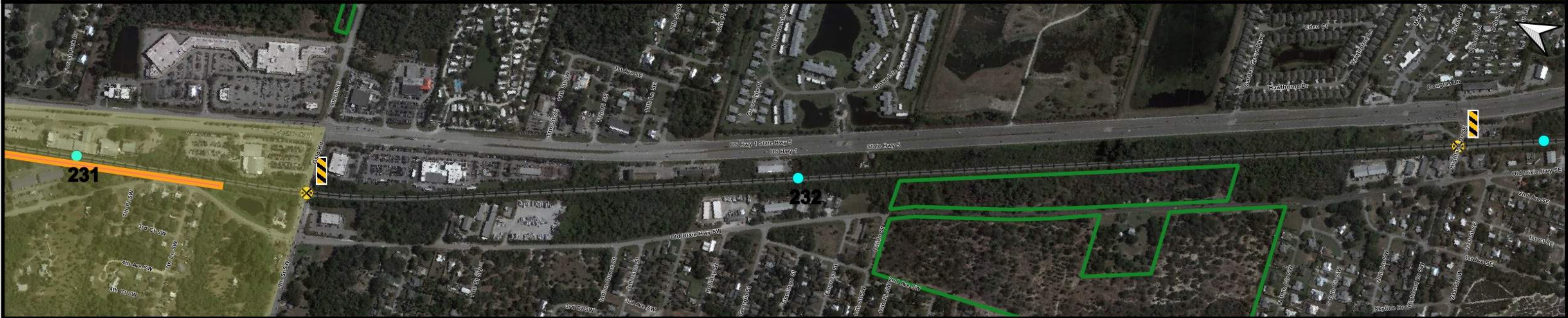
- Dynamic Envelope
- R8-8 Signage
- Crisis Signage
- Delineators, RPMs, and Edge Stripe

Channelization

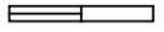
- Fencing

Incidents

- Suicide
- Trespass-Fatality
- Trespass-Injury



LEGEND 0 250 500 ft



Crossings

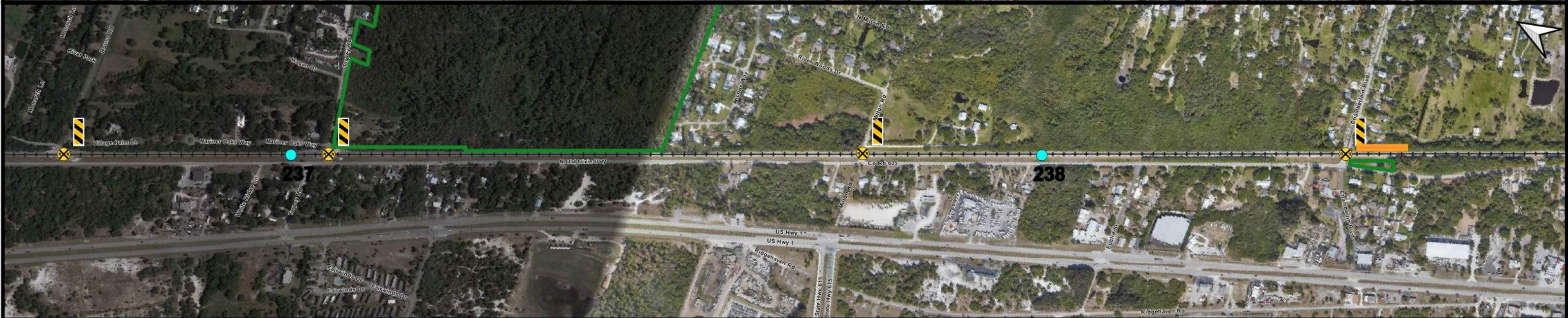
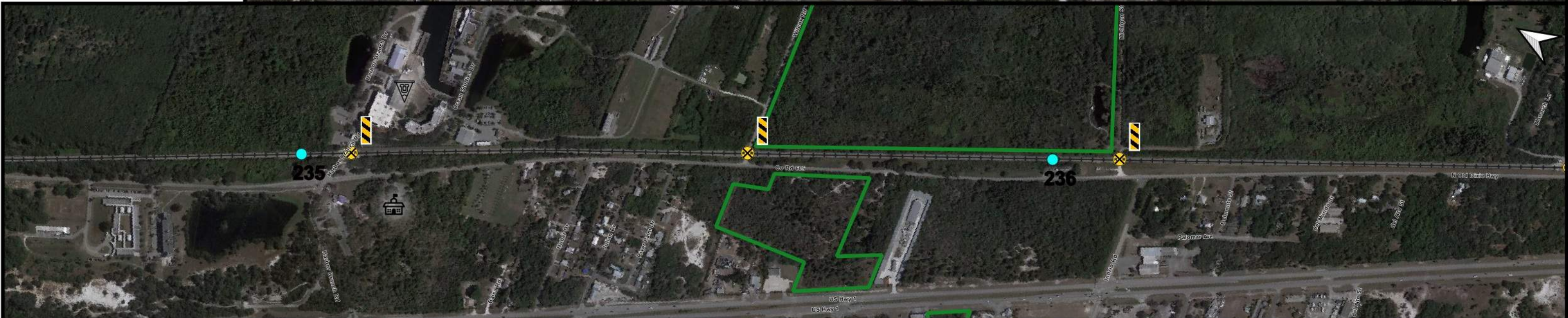
- Dynamic Envelope
- R8-8 Signage
- Crisis Signage
- Delineators, RPMs, and Edge Stripe

Channelization

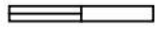
- Fencing

Incidents

- Suicide
- Trespass-Fatality
- Trespass-Injury



LEGEND 0 250 500 ft



Crossings

- Dynamic Envelope
- R8-8 Signage
- Crisis Signage
- Delineators, RPMs, and Edge Stripe

Channelization

- Fencing

Incidents

- Suicide
- Trespass-Fatality
- Trespass-Injury



LEGEND 0 250 500 ft




Crossings

-  Dynamic Envelope
-  R8-8 Signage
-  Crisis Signage
-  Delineators, RPMs, and Edge Stripe

Channelization

-  Fencing

Incidents

-  Suicide
-  Trespass-Fatality
-  Trespass-Injury



LEGEND 0 250 500 ft



Crossings

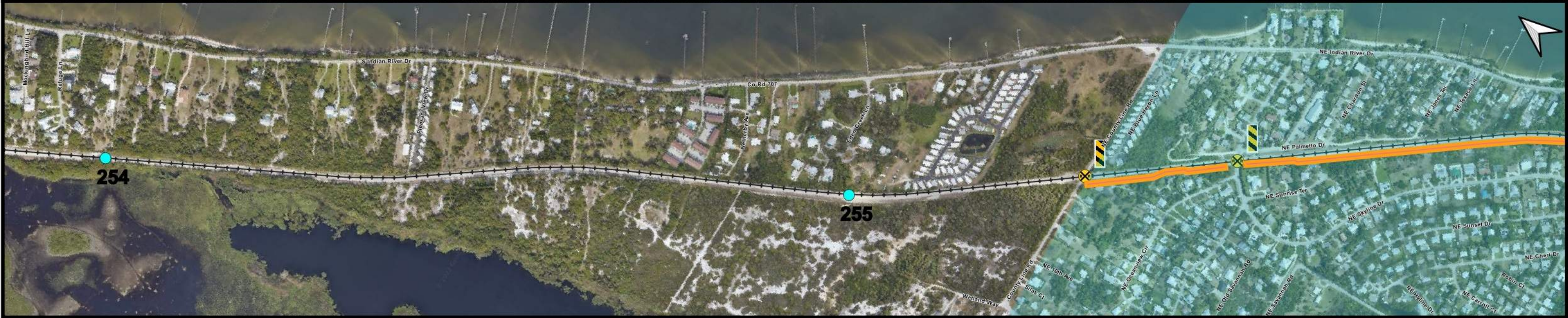
- Dynamic Envelope
- R8-8 Signage
- Crisis Signage
- Delineators, RPMs, and Edge Stripe

Channelization

- Fencing

Incidents

- Suicide
- Trespass-Fatality
- Trespass-Injury



LEGEND 0 250 500 ft



Crossings

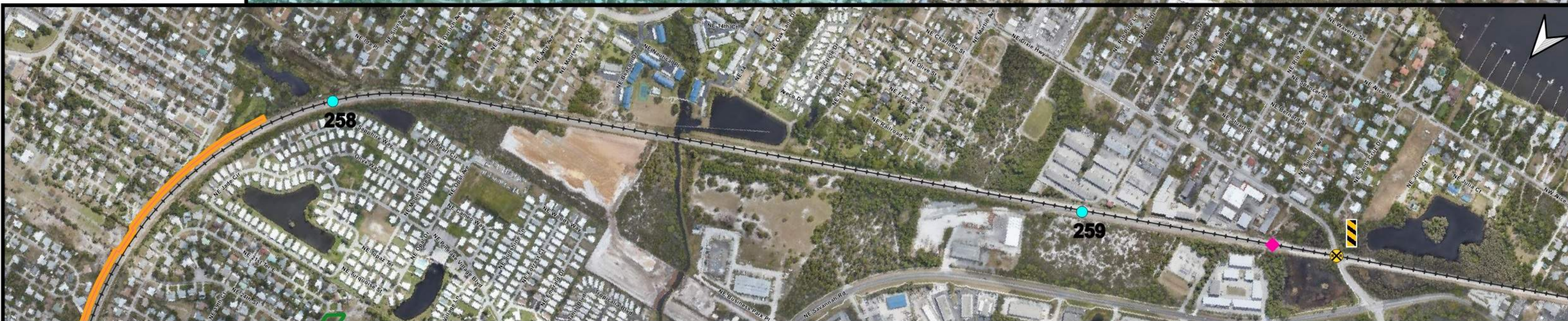
- Dynamic Envelope
- R8-8 Signage
- Crisis Signage
- Delineators, RPMs, and Edge Stripe

Channelization

- Fencing

Incidents

- Suicide
- Trespass-Fatality
- Trespass-Injury



LEGEND 0 250 500 ft




Crossings

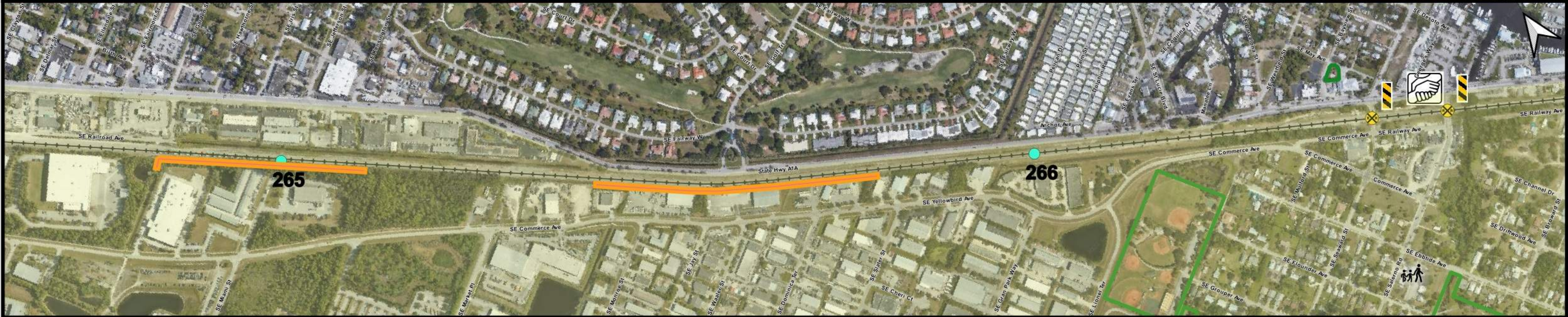
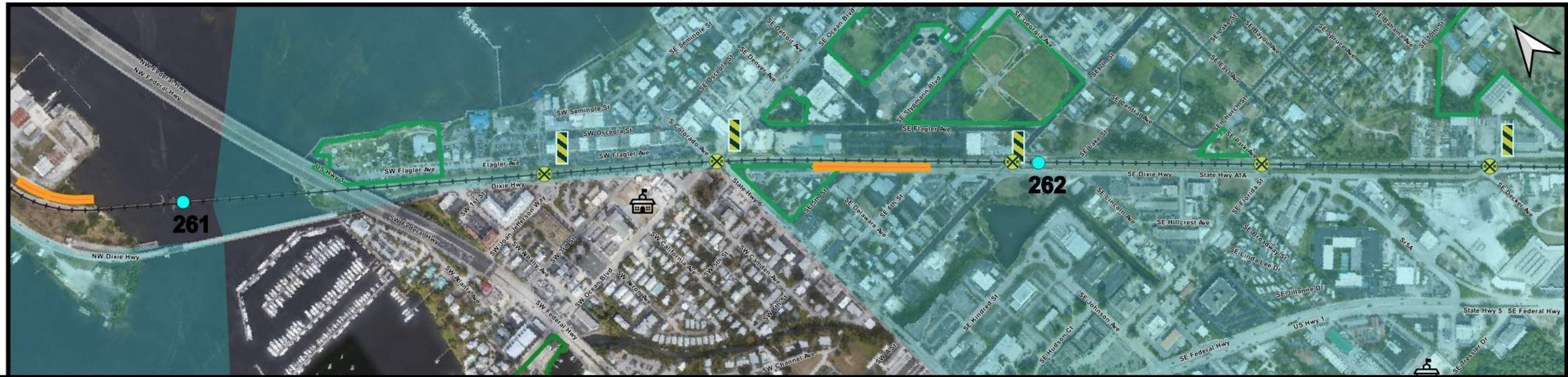
-  Dynamic Envelope
-  R8-8 Signage
-  Crisis Signage
-  Delineators, RPMs, and Edge Stripe

Channelization

-  Fencing

Incidents

-  Suicide
-  Trespass-Fatality
-  Trespass-Injury



LEGEND 0 250 500 ft




Crossings

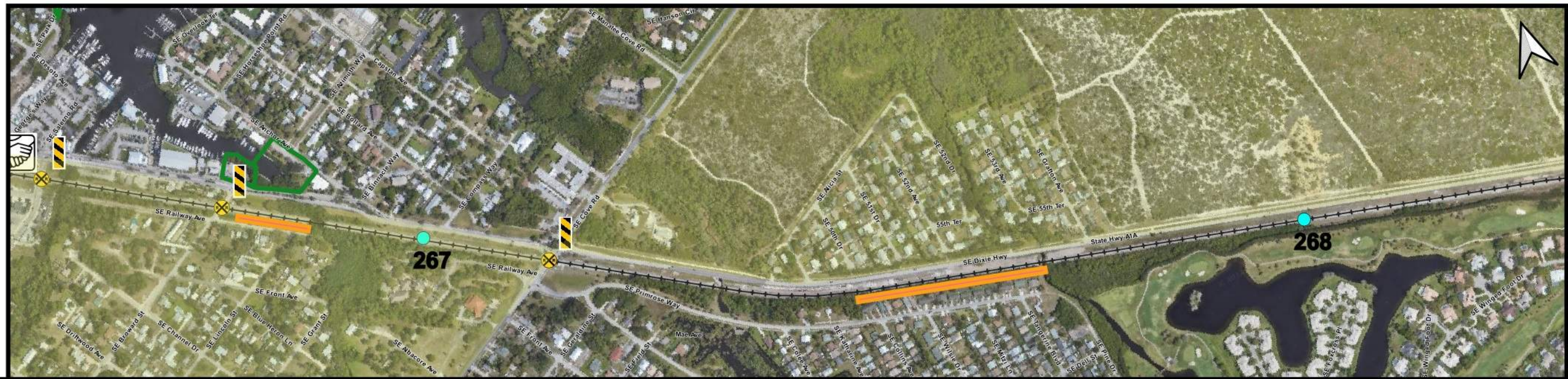
-  Dynamic Envelope
-  R8-8 Signage
-  Crisis Signage
-  Delineators, RPMs, and Edge Stripe

Channelization

-  Fencing

Incidents

-  Suicide
-  Trespass-Fatality
-  Trespass-Injury



LEGEND 0 250 500 ft




Crossings

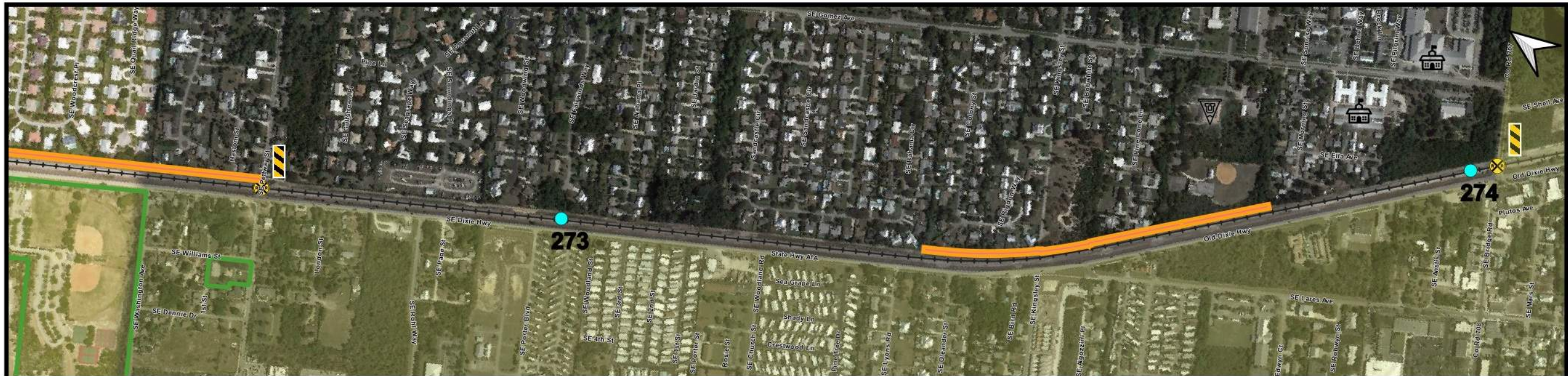
-  Dynamic Envelope
-  R8-8 Signage
-  Crisis Signage
-  Delineators, RPMs, and Edge Stripe

Channelization

-  Fencing

Incidents

-  Suicide
-  Trespass-Fatality
-  Trespass-Injury



LEGEND 0 250 500 ft




Crossings

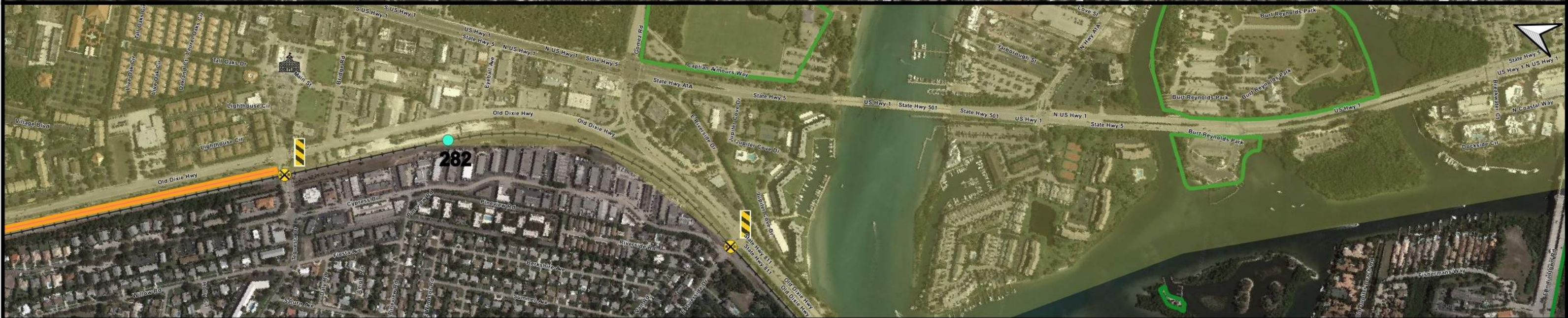
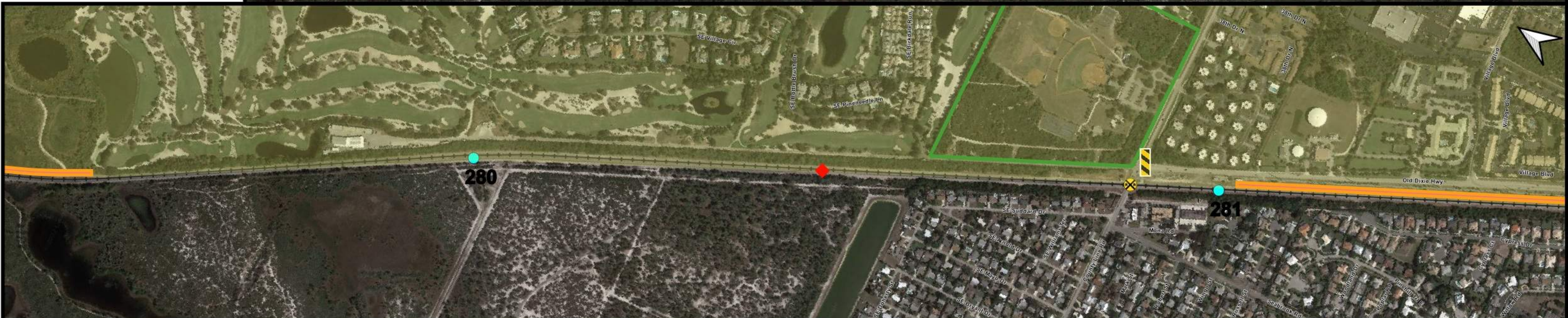
-  Dynamic Envelope
-  R8-8 Signage
-  Crisis Signage
-  Delineators, RPMs, and Edge Stripe

Channelization

-  Fencing

Incidents

-  Suicide
-  Trespass-Fatality
-  Trespass-Injury



LEGEND 0 250 500 ft




Crossings

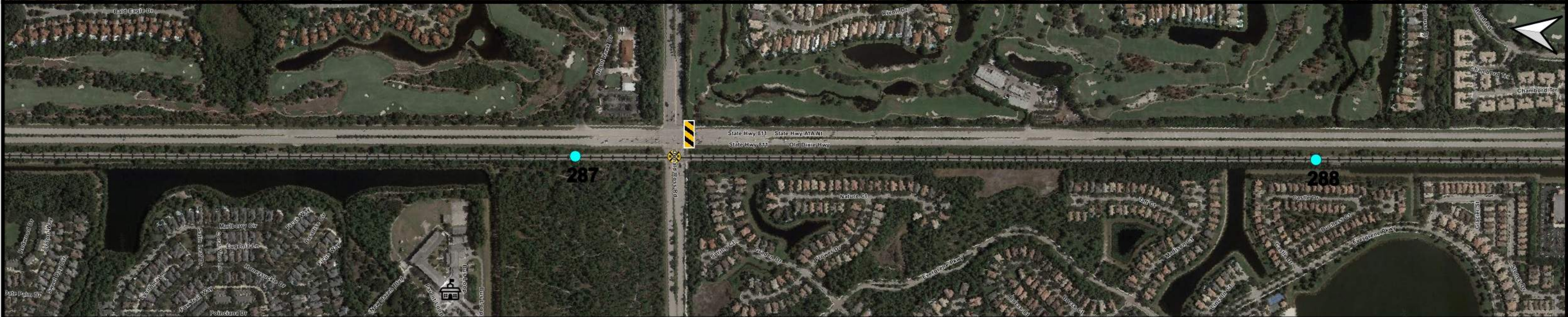
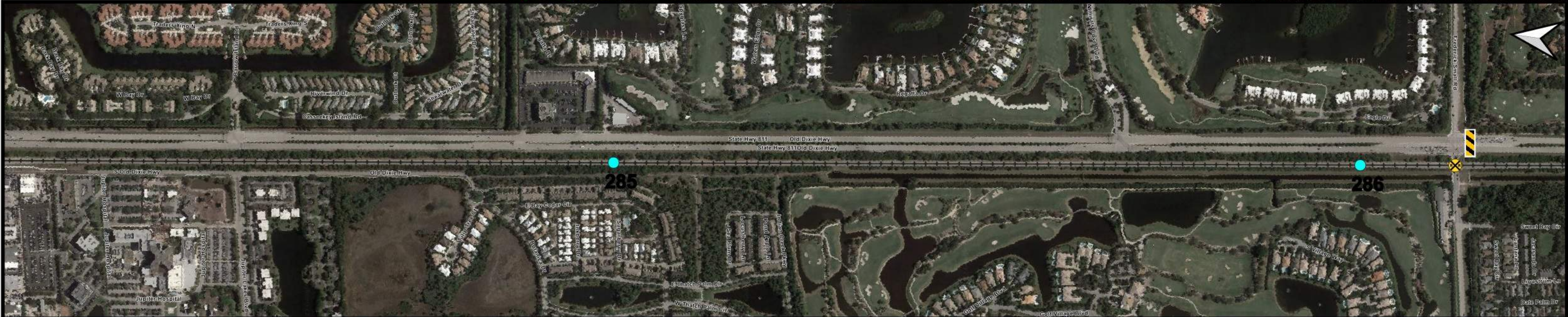
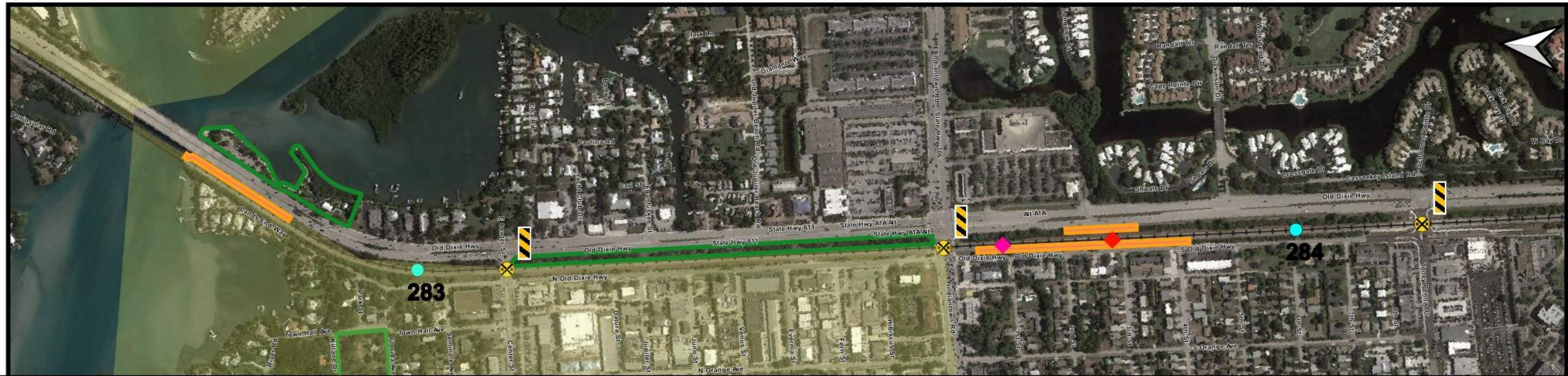
-  Dynamic Envelope
-  R8-8 Signage
-  Crisis Signage
-  Delineators, RPMs, and Edge Stripe

Channelization

-  Fencing

Incidents

-  Suicide
-  Trespass-Fatality
-  Trespass-Injury



LEGEND 0 250 500 ft



Crossings

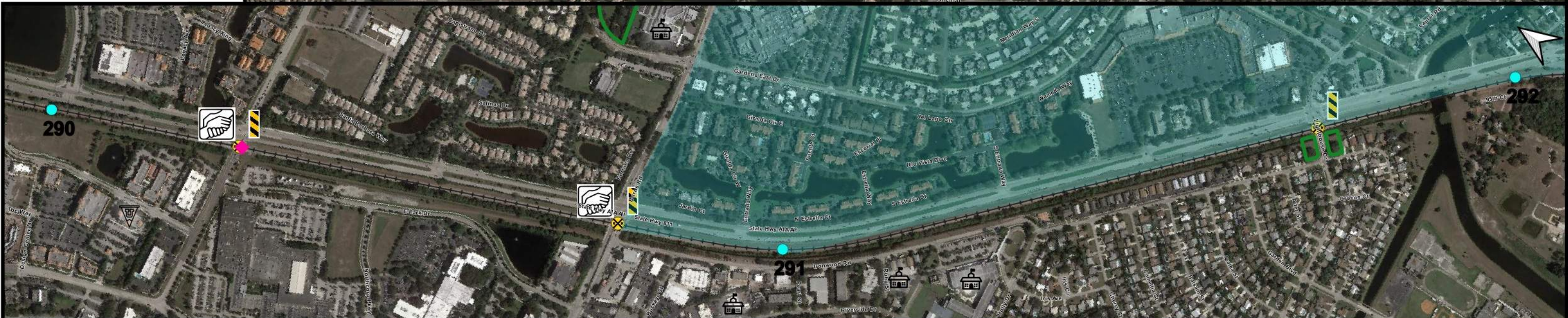
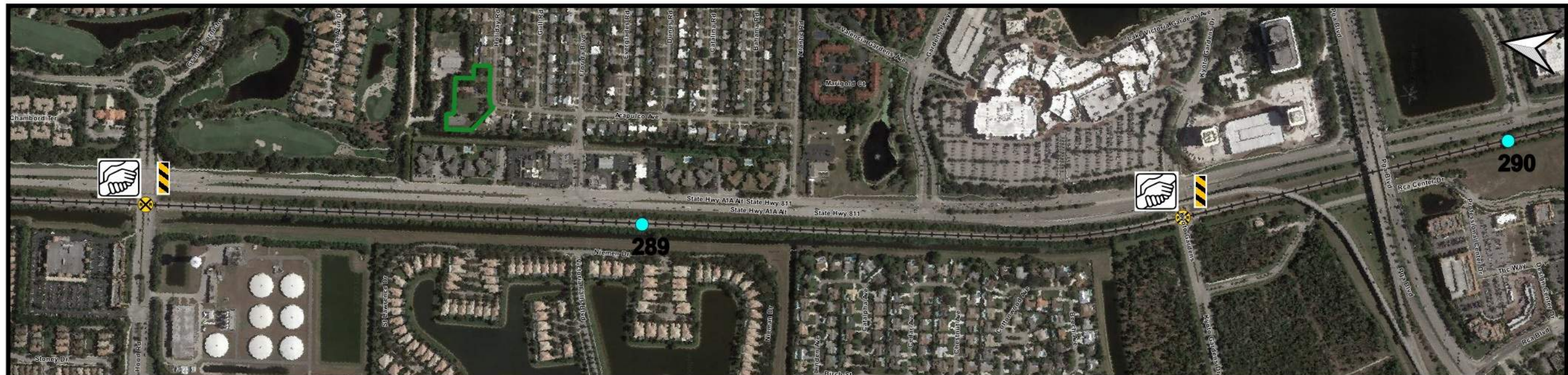
- Dynamic Envelope
- R8-8 Signage
- Crisis Signage
- Delineators, RPMs, and Edge Stripe

Channelization

- Fencing

Incidents

- Suicide
- Trespass-Fatality
- Trespass-Injury



LEGEND 0 250 500 ft




Crossings

-  Dynamic Envelope
-  R8-8 Signage
-  Crisis Signage
-  Delineators, RPMs, and Edge Stripe

Channelization

-  Fencing

Incidents

-  Suicide
-  Trespass-Fatality
-  Trespass-Injury



LEGEND

0 250 500 ft

Crossings

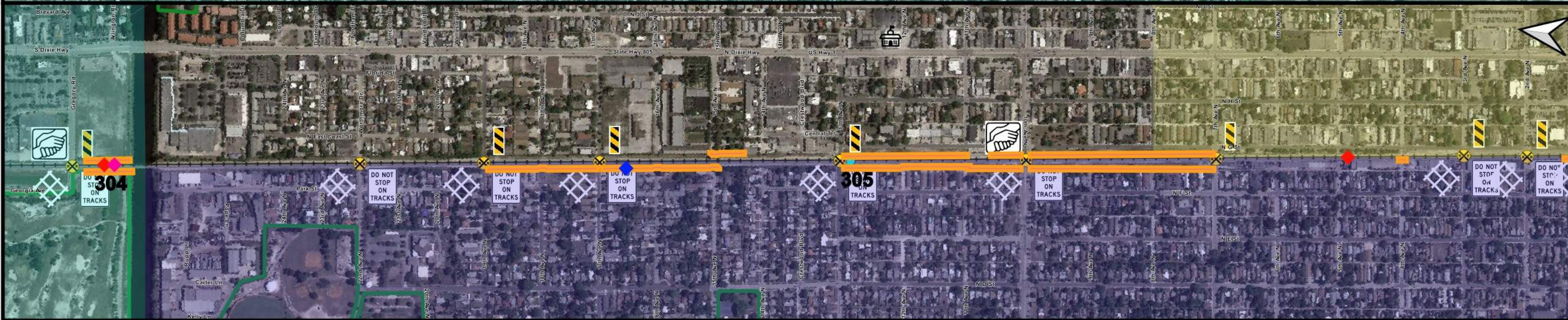
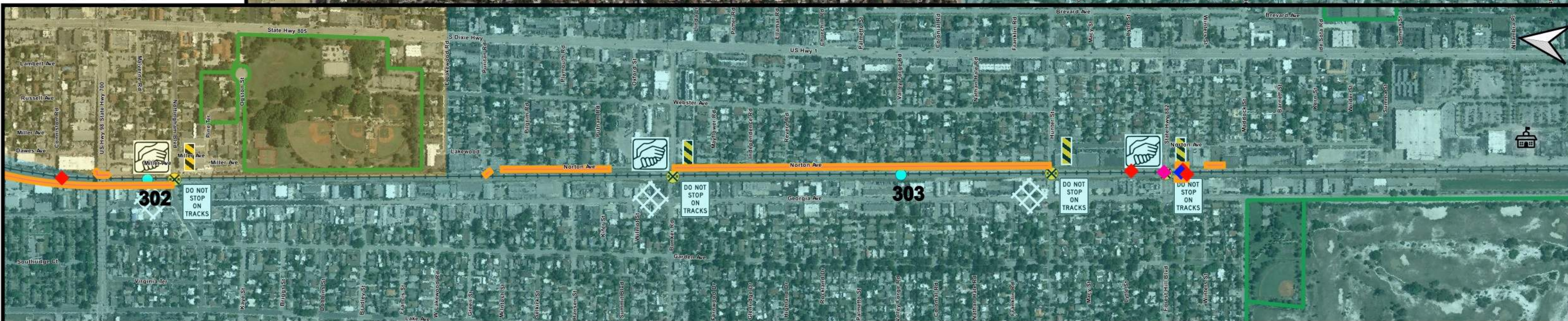
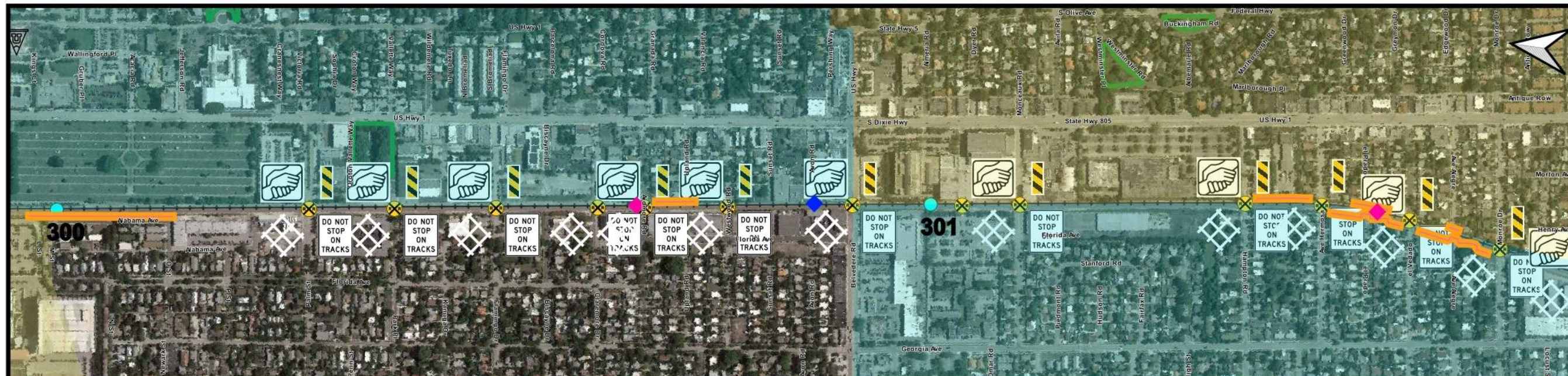
- Dynamic Envelope
- R8-8 Signage
- Crisis Signage
- Delineators, RPMs, and Edge Stripe

Channelization

- Fencing

Incidents

- Suicide
- Trespass-Fatality
- Trespass-Injury



LEGEND 0 250 500 ft

Crossings

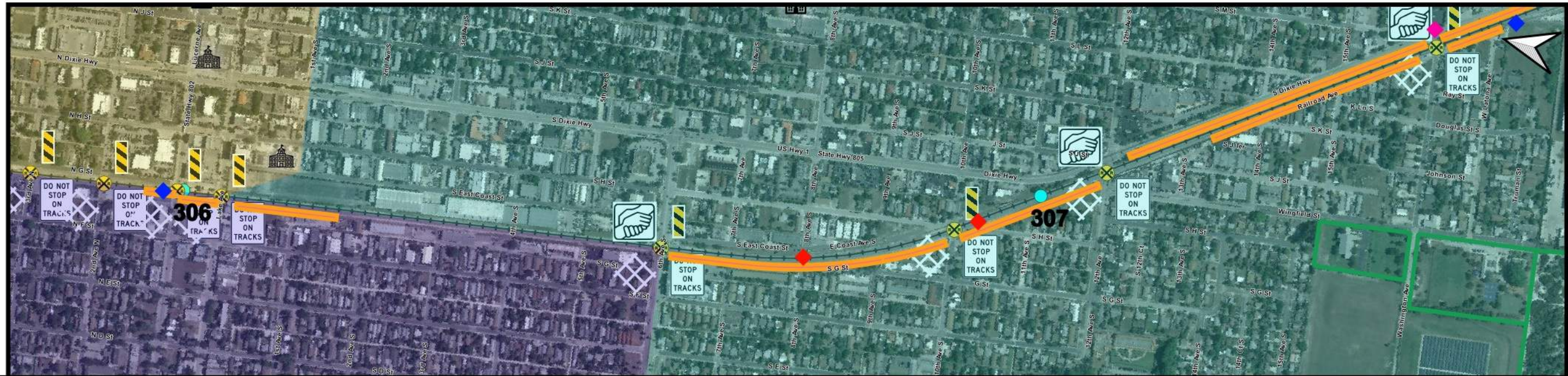
- Dynamic Envelope
- R8-8 Signage
- Crisis Signage
- Delineators, RPMs, and Edge Stripe

Channelization

- Fencing

Incidents

- Suicide
- Trespass-Fatality
- Trespass-Injury



LEGEND 0 250 500 ft

Crossings

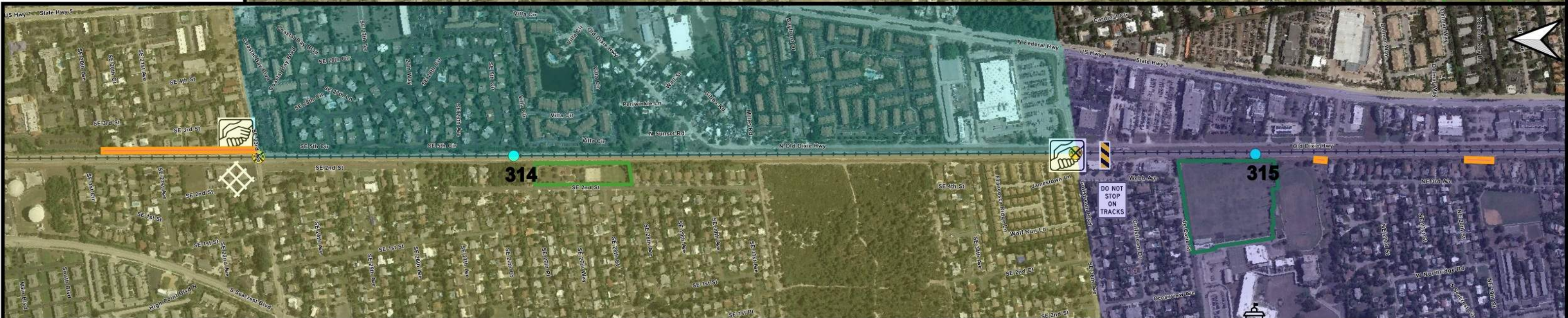
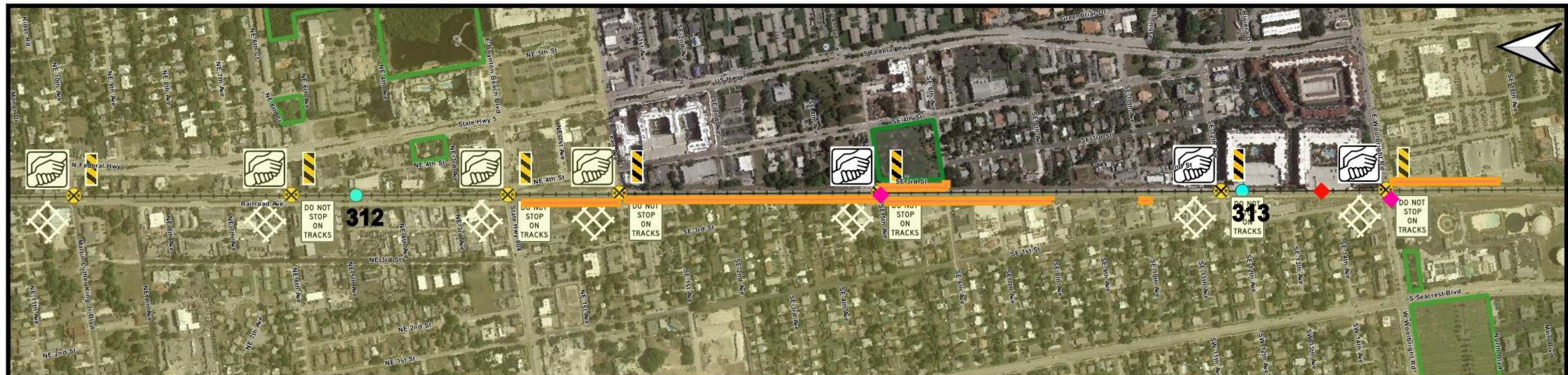
- Dynamic Envelope
- R8-8 Signage
- Crisis Signage
- Delineators, RPMs, and Edge Stripe

Channelization

- Fencing

Incidents

- Suicide
- Trespass-Fatality
- Trespass-Injury



LEGEND 0 250 500 ft

Crossings

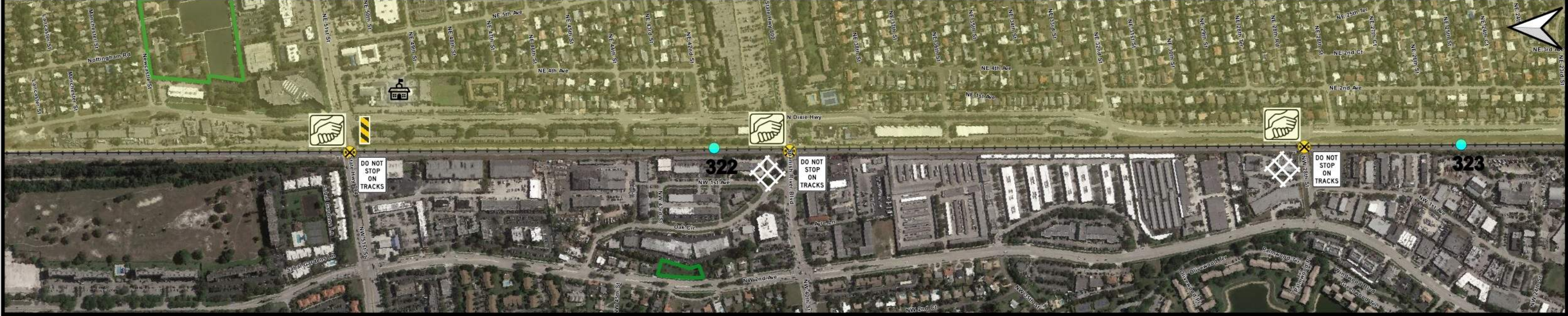
- Dynamic Envelope
- R8-8 Signage
- Crisis Signage
- Delineators, RPMs, and Edge Stripe

Channelization

- Fencing

Incidents

- Suicide
- Trespass-Fatality
- Trespass-Injury



LEGEND 0 250 500 ft

Crossings

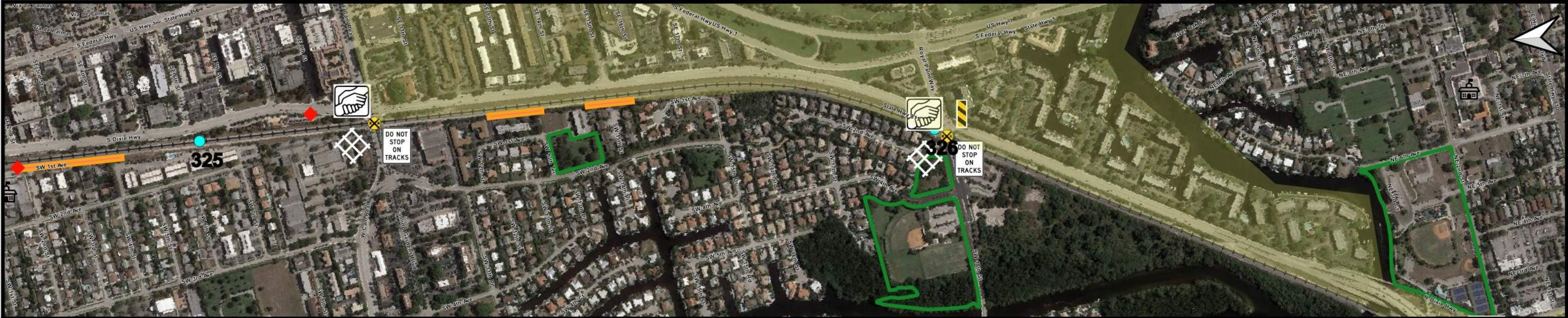
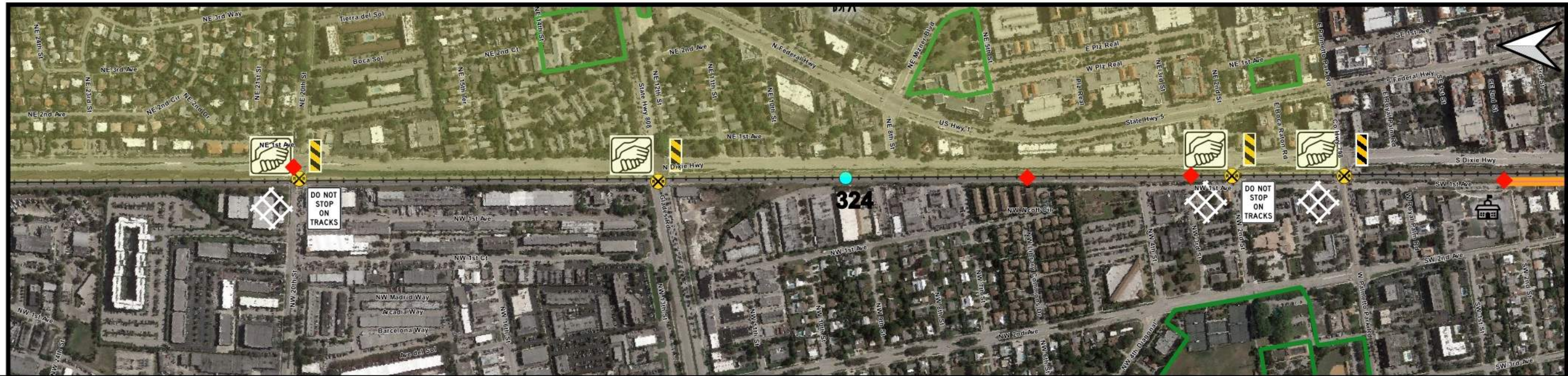
- Dynamic Envelope
- R8-8 Signage
- Crisis Signage
- Delineators, RPMs, and Edge Stripe

Channelization

- Fencing

Incidents

- Suicide
- Trespass-Fatality
- Trespass-Injury



LEGEND 0 250 500 ft

Crossings

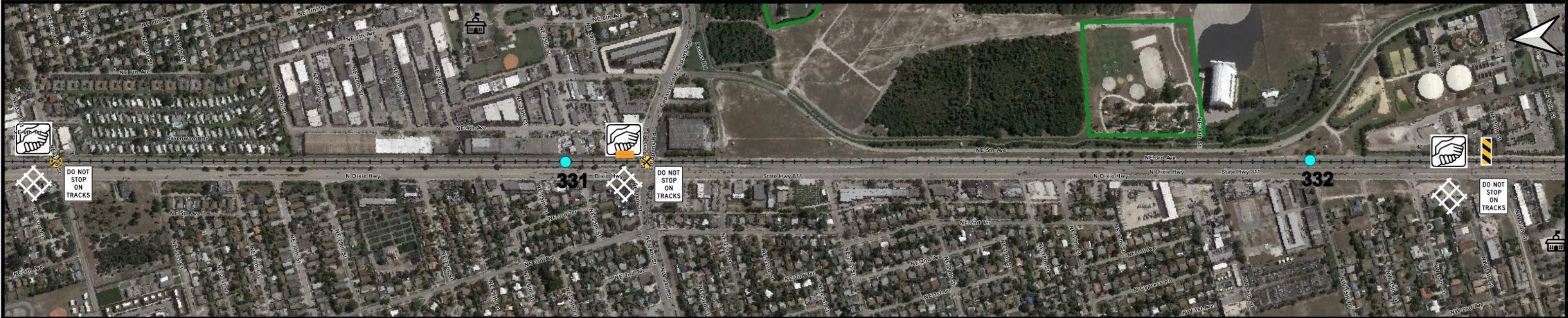
- Dynamic Envelope
- R8-8 Signage
- Crisis Signage
- Delineators, RPMs, and Edge Stripe

Channelization

- Fencing

Incidents

- Suicide
- Trespass-Fatality
- Trespass-Injury



LEGEND 0 250 500 ft




Crossings

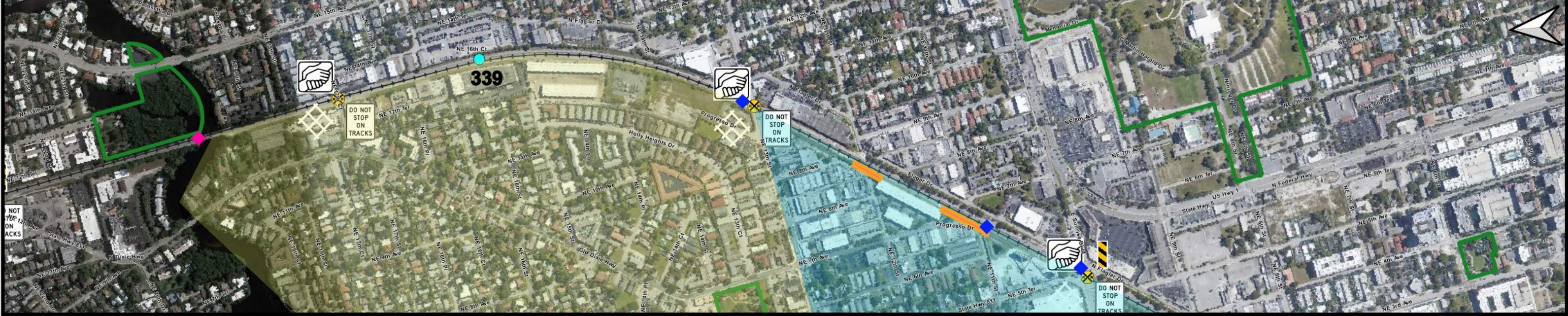
-  Dynamic Envelope
-  R8-8 Signage
-  Crisis Signage
-  Delineators, RPMs, and Edge Stripe

Channelization

-  Fencing

Incidents

-  Suicide
-  Trespass-Fatality
-  Trespass-Injury



LEGEND 0 250 500 ft

Crossings

- Dynamic Envelope
- R8-8 Signage
- Crisis Signage
- Delineators, RPMs, and Edge Stripe

Channelization

- Fencing

Incidents

- Suicide
- Trespass-Fatality
- Trespass-Injury



LEGEND 0 250 500 ft




Crossings

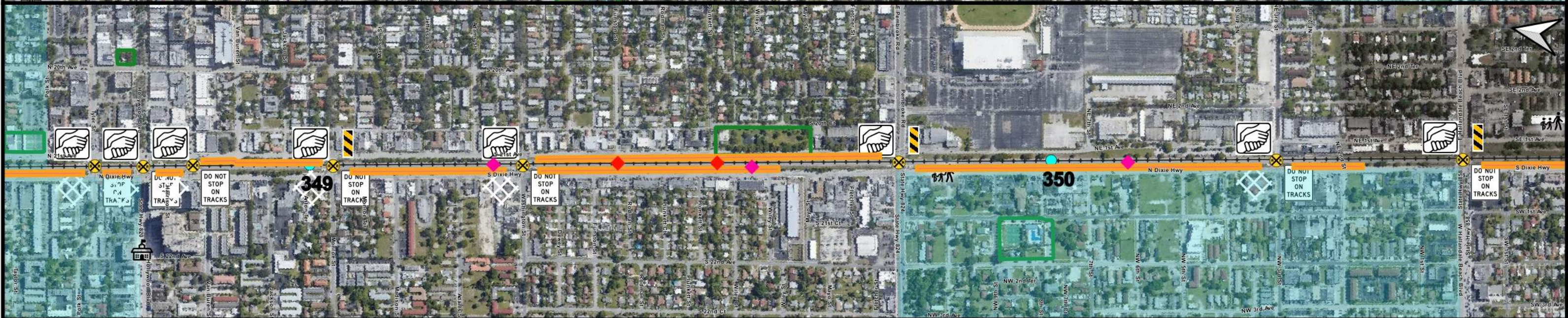
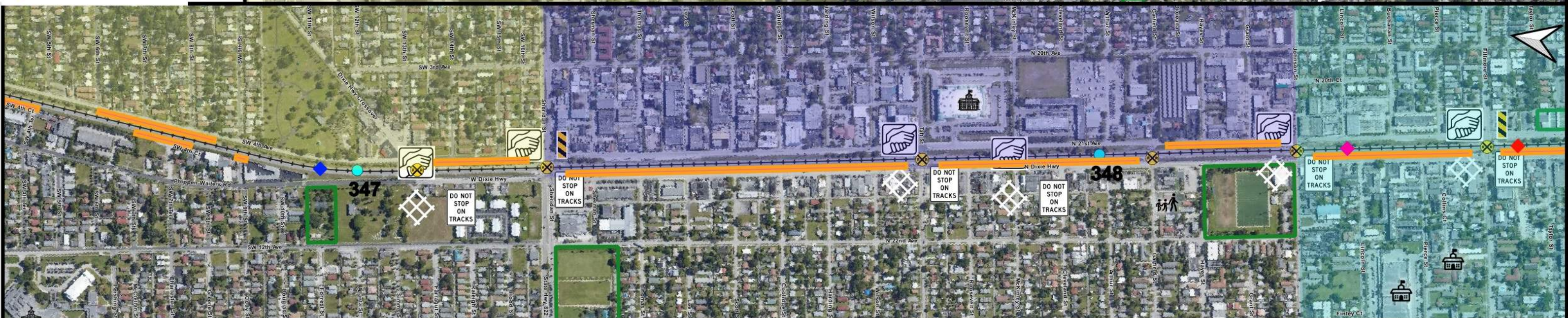
-  Dynamic Envelope
-  R8-8 Signage
-  Crisis Signage
-  Delineators, RPMs, and Edge Stripe

Channelization

-  Fencing

Incidents

-  Suicide
-  Trespass-Fatality
-  Trespass-Injury



LEGEND 0 250 500 ft




Crossings

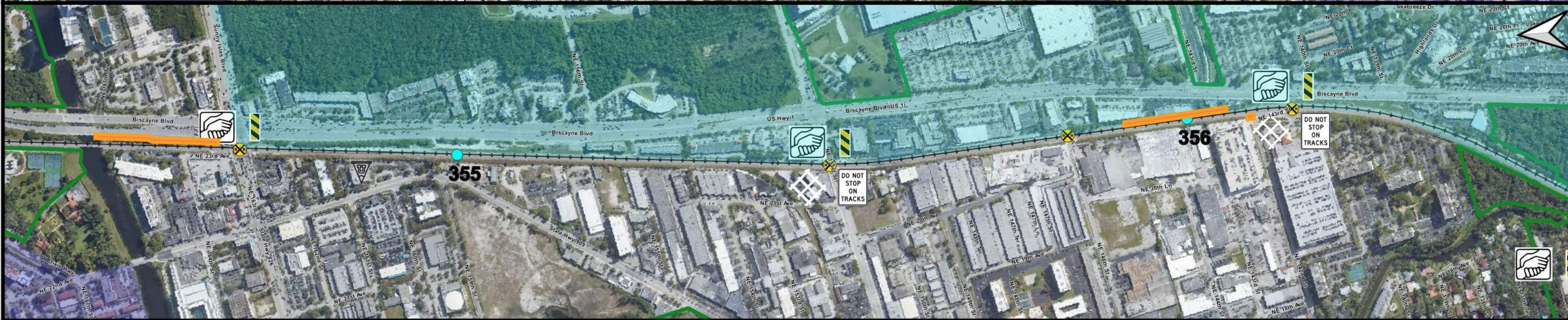
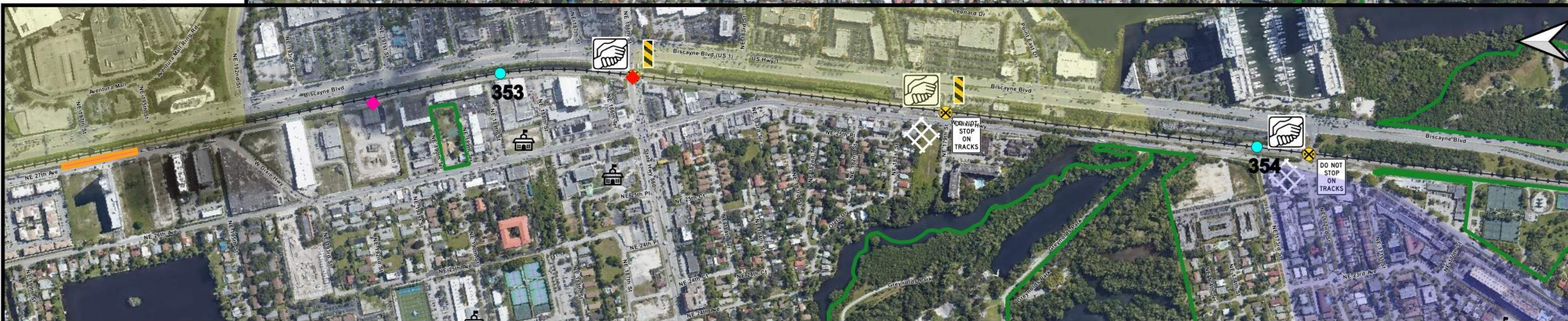
-  Dynamic Envelope
-  R8-8 Signage
-  Crisis Signage
- 

Channelization

- 

Incidents

-  Suicide
-  Trespass-Fatality
- 



LEGEND 0 250 500 ft

Crossings

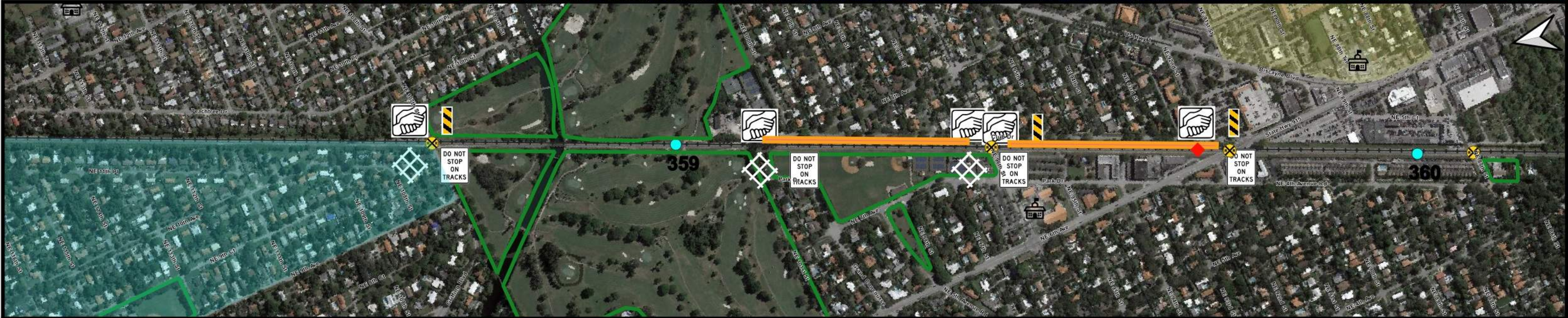
- Dynamic Envelope
- R8-8 Signage
- Crisis Signage
- Delineators, RPMs, and Edge Stripe

Channelization

- Fencing

Incidents

- Suicide
- Trespass-Fatality
- Trespass-Injury



LEGEND 0 250 500 ft




Crossings

-  Dynamic Envelope
-  R8-8 Signage
-  Crisis Signage
-  Delineators, RPMs, and Edge Stripe

Channelization

-  Fencing

Incidents

-  Suicide
-  Trespass-Fatality
-  Trespass-Injury

