

UTILITIES ASSESSMENT REPORT

Project Development & Environmental (PD&E)
Golden Glades Multimodal Transportation Facility
and Truck Travel Center

Financial Project ID: 251684-4
Miami-Dade County

Final
February 2016

Prepared by:

Brindley Pieters & Associates, Inc.
212 East New York Avenue
DeLand, FL 32720
386-822-9473

Prepared for:

Florida Department of Transportation
District 6

TABLE OF CONTENTS

PROJECT DESCRIPTION_____	Page 3
PURPOSE_____	Page 3
UTILITY COORDINATION_____	Page 3
EXISTING UTILITIES_____	Page 3
DESCRIPTION OF EXISTING UTILITIES_____	Page 10-11

FIGURES

CONCEPT PLANS _____	Page 4-7
---------------------	----------

TABLES

TABLE 1 – IDENTIFIED UTILITY AGENCY/OWNERS_____	Page 8
TABLE 2 - EXISTING UTILITIES_____	Page 9

APPENDICES

APPENDIX A – SUNSHINE 811 INTERNET TICKET_____	Page 12
APPENDIX B – SAMPLE CONTACT LETTER_____	Page 16
APPENDIX C – UTILITY RESPONSE INFORMATION_____	Page 18

PROJECT DESCRIPTION

The Golden Glades Multimodal Transportation Facility and Truck Travel Center is located in northern Miami-Dade County. The area is bordered by the South Florida Rail Corridor (SFRC) to the north, SR 9A (I-95) to the east, and the NW 157th St. to the south. The area is divided into 2 sites, a 10-acre site to accommodate the Truck Travel Center, and a 15-acre site for the Multimodal Transportation Facility. FDOT, District 6 is performing a PD&E re-evaluation for these 2 sites. A Utility Assessment Report was not originally done as part of the original PD&E in 2006, and is therefore being included in the re-evaluation. The concept plans used in this Utility Assessment Report are shown in **Figure 1**.

PURPOSE

The purpose of this Utility Assessment report is to:

1. Identify utility agencies/owners within the study area.
2. Identify and describe the approximate location, type/size/material of all utility facilities within the study area.
3. Obtain an order-of-magnitude cost estimate from identified utility agencies/owners within the study area.
4. Provide any potential mitigative recommendations which could be taken by the Department to minimize impacts.

UTILITY COORDINATION

A Sunshine 811 utility design ticket was obtained to identify the initial list of utilities within the study area. The Sunshine 811 design ticket can be found in Appendix A of this Utility Assessment Report. On November 18, 2015, Brindley Pieters & Associates, Inc. distributed to all utility agencies/owners Site Concept Plans file dated November 2015. This assessment is not intended to cover any equipment, facilities for the ITS or traffic operations systems, or services needed at the proposed site.

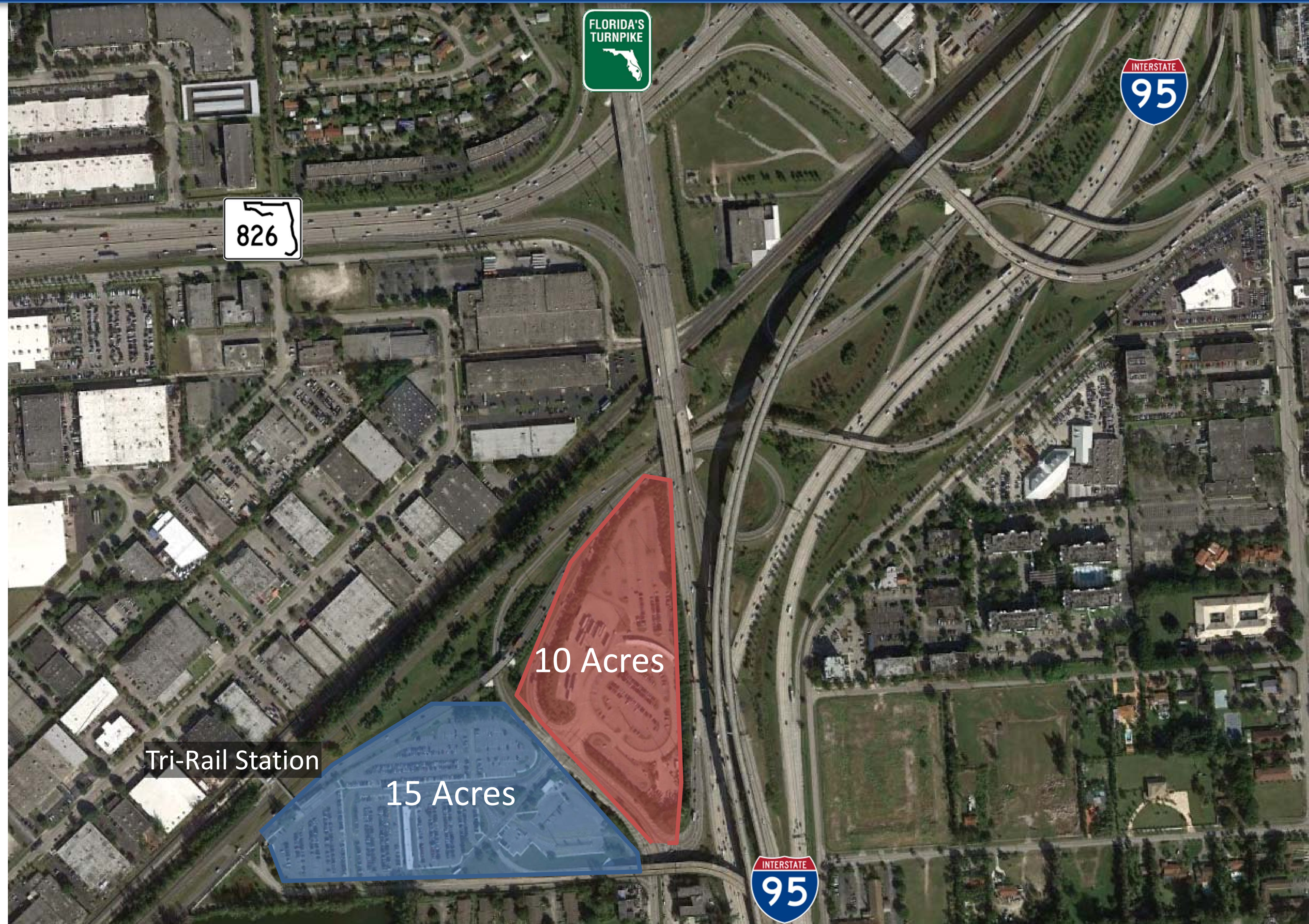
EXISTING UTILITIES

The information provided by the utility agency/owners indicate that facilities are present paralleling the west side of I-95 and Florida's Turnpike, outside the L/A R/W crossing the proposed 10-acre and 15-acre sites, as well as existing services including water, and electric within the area.

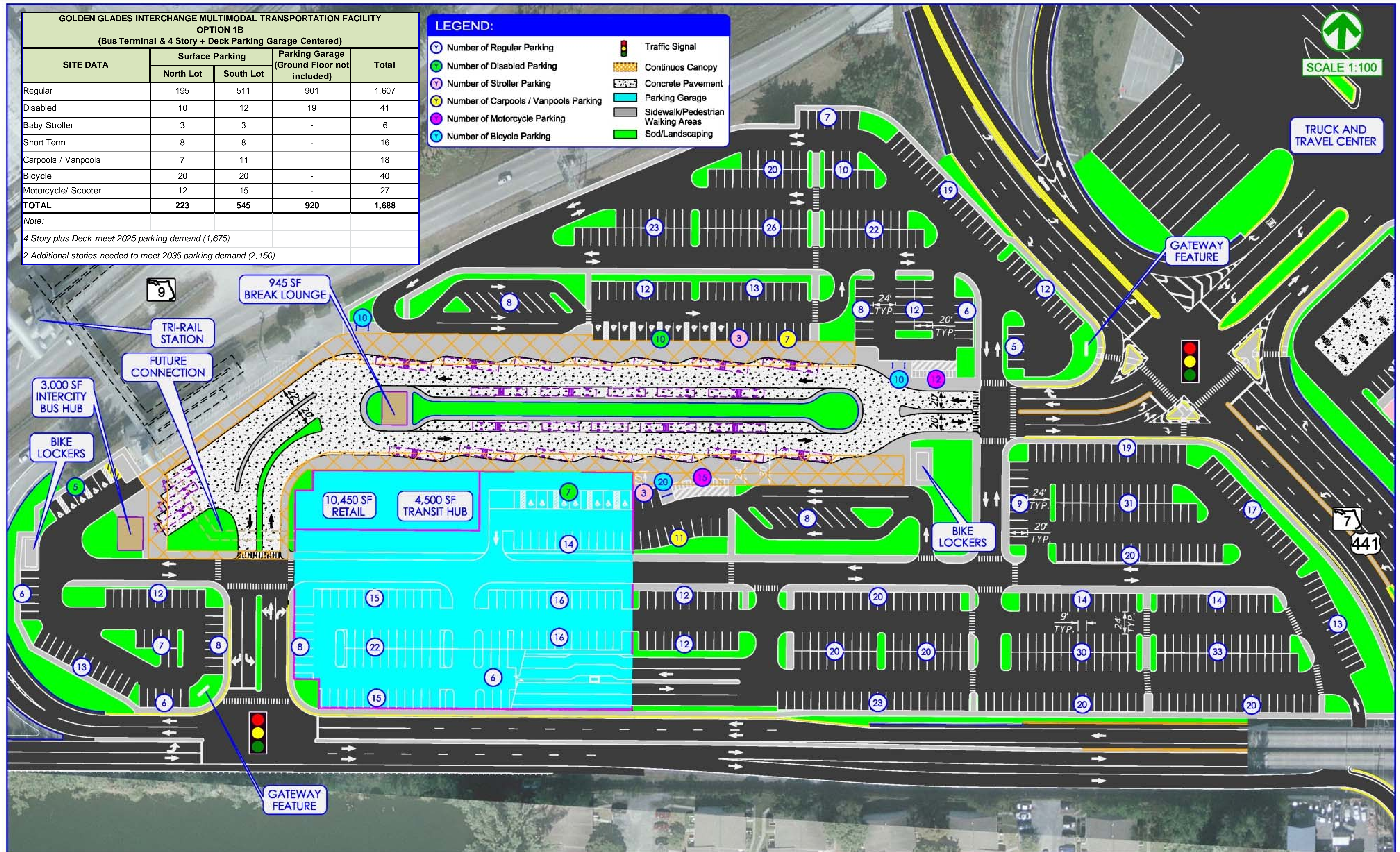
Table 1 lists the identified utility agency/owners and the representative contact information. **Table 2** is a summary of the existing facilities present within the project area along with an estimated order-of-magnitude relocation cost.

FIGURE 1 – CONCEPT PLANS
(See attached)

Golden Glades Interchange - Existing Conditions



Conceptual Layout – Multimodal Facility



Conceptual Layout – Truck Travel Center

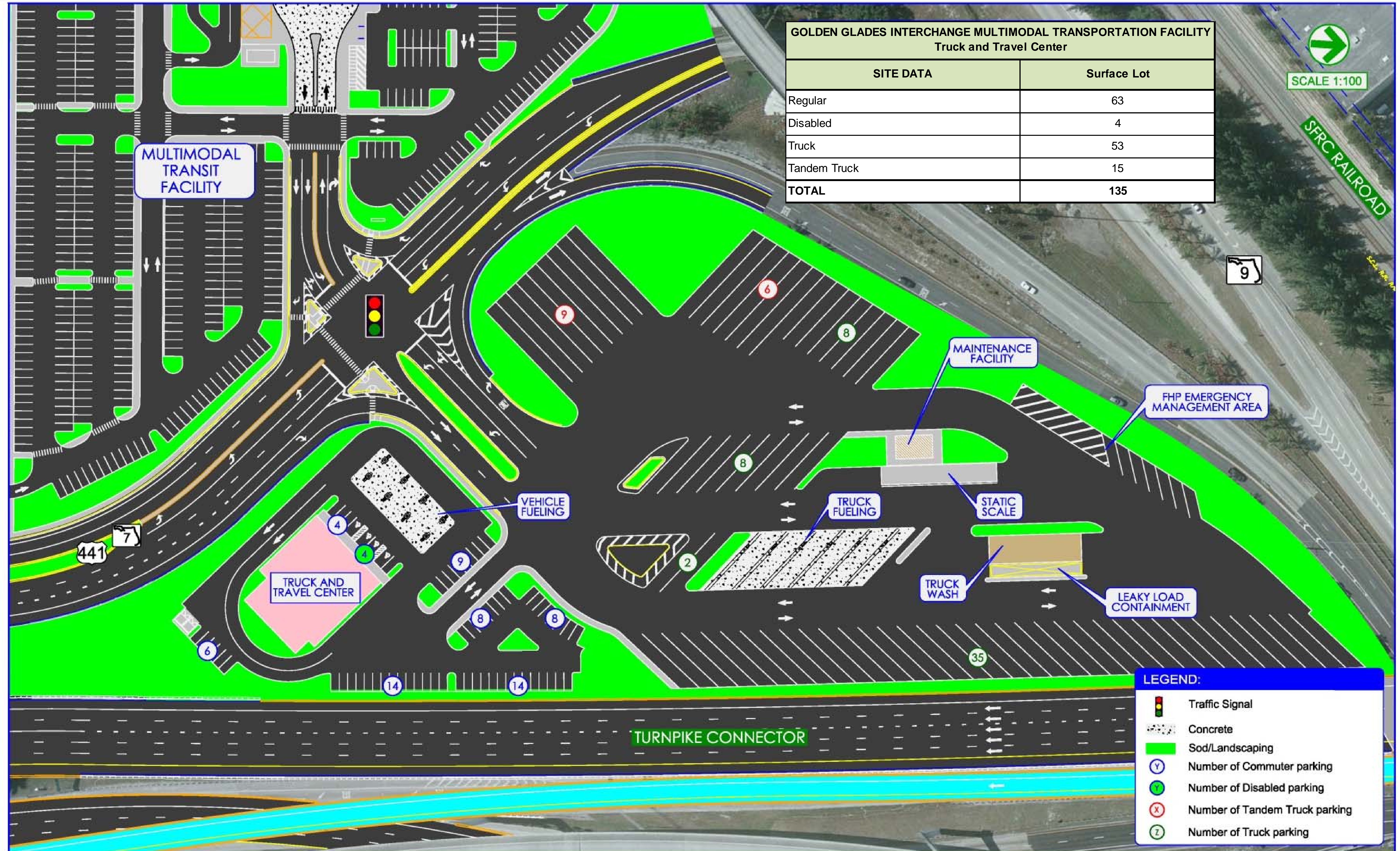


TABLE 1 – IDENTIFIED UTILITY AGENCY/OWNERS

Golden Glades Multimodal Transportation Facility and Truck Travel Center		
UTILITY AGENCY/OWNER		CONTACT INFORMATION
1	AT&T Florida	Steve Low Phone: (305) 222-8745 Email: sl4504@att.com
2	City of North Miami	Wisler Pierre-Louis, P.E. Phone: (305) 895-9834 Email: wpierre-louis@nothmiamifl.gov
3	City of North Miami Beach	Karim Rossy Phone: (305) 948-2980 Email: karim.rossy@citynmb.com
4	Comcast Cable	Leonard Maxwell-Newbold Phone: (954) 447-8405 Email: Leonard_Maxwell-Newbold@cable.comcast.com
5	Dade County Public Works	Octavio Marin Phone: (305) 375-4664 Email: ocm@miamidade.gov
6	Florida Power & Light (Distribution)	Angel Vargas Phone: (305) 442-5129 Email: angel.vargas@fpl.com
7	Florida Power & Light (Transmission)	George Beck Phone: (561) 904-3604 Email: george.beck@fpl.com
8	FPL Fibernet	Danny Haskett Phone: (305) 552-2931 Email: danny.haskett@fpl.com
9	Miami-Dade Water and Sewer	Patrick Chong Phone: (786) 268-5255 Email: pchon@miamidade.gov
10	TECO People Gas	Angel Quant Phone: (945) 453-0805 Email: alquant@tecoenergy.com
11	Verizon	John McNeil Phone: (863)965-6438 Email: john.mcneil@verizon.com

TABLE 2 - EXISTING UTILITIES

Golden Glades Multimodal Transportation Facility and Truck Travel Center			
UTILITY AGENCY/OWNER		FACILITIES WITHIN PROJECT AREA	ESTIMATED RELOCATION COST
1	AT&T Florida	Aerial copper cable parallel on the west side of I-95. The 10-acre site has multiple aerial and buried copper cables. The 15-acre site has multiple aerial and buried copper cables and a fiber optic.	N/A
2	City of North Miami	None	N/A
3	City of North Miami Beach	16" water main that runs parallel to I-95 with an 8" feed to the 10-acre project site and a 12" water main that services the 15-acre site.	\$150/LF - 16" wm \$100/LF - 12" wm
4	Comcast Cable	None	N/A
5	Dade County Public Works	No Response	N/A
6	Florida Power & Light (Distribution)	13.2 kv overhead electric paralleling I-95 outside the limited access R/W on the west side. There is also a 13.2 kv overhead electric on both the north and south side SFRC and a 13.2 kv service into the 15-acre site.	\$250,000
7	Florida Power & Light (Transmission)	138 kv overhead electric transmission lines along the west side of NW 7 th Ave and continue through the 10-acre Truck Center site with approximately 6 poles in existing landscape areas.	\$500,000
8	FPL Fibernet	None	N/A
9	Miami-Dade Water and Sewer	None	N/A
10	TECO People Gas	None	N/A
11	Verizon	None	N/A

A. DESCRIPTION OF EXISTING UTILITIES

1. AT&T Florida

AT&T Florida supplied a GIS map (photo) of their facilities within the project area. These facilities include: an aerial copper cable parallel and on the west side of I-95, multiple aerial and buried copper cables within the 10-acre site and multiple aerial and buried copper cables and a fiber optic within the 15-acre site. No cost was supplied due to the vast amount of facilities and the ability for the ultimate design to avoid many impacts to the existing lines. Color coding of the map was described as follows: Green – buried copper cable, Blue – aerial copper cable, Pink – fiber optic cable, Circles – AT&T poles, and Stars – FPL poles.

2. City of North Miami

The City of North Miami provided a letter dated November 19, 2015 stating they had no facilities within the project area.

3. City of North Miami Beach

The City of North Miami Beach supplied a water atlas of the project area which depicts a 16” water main running parallel on the west side of I-95 outside the limited access right-of-way. This main has a 12” water main feed into the 15-acre site and an 8” water main into the 10-acre site. There are multiple feeds with meters to each parcel with associated 4” and 6” service lines within both project sites. The City of North Miami Beach estimated relocation costs to be \$150 / lf of the 16” main, and \$100 / lf for the 12” mains.

4. Comcast Cable

Comcast Cable supplied an as-built of the existing facilities along NW 7th Ave. that service the Centre Lake Apartments south of the proposed site. No facilities are within the project area, but the map supplied is included in the Appendix C for information only.

5. Dade County Public Works

No Response to date from the County Public Works department, but the Water and Sewer Department did respond stating that they did not have any facilities. The remainder of potential County facilities would include storm sewer (not included in this report) and facilities for lighting and ITS (also not included in this report).

6. Florida Power & Light (Distribution)

Florida Power & Light (Distribution) supplied a map of the electric facilities in the area. There is an existing 13.2 kv overhead electric running parallel on the west side of I-95 outside the limited access right-of-way. This line crossing through the 10-acre site and is on the Florida Power & Light Transmission poles. There is also an existing 13.2 kv overhead

electric that feeds the 15-acre site at the southeast corner of the site. Cost to relocate just the distribution portion of the overhead electric was estimated at approximately \$250,000.

7. Florida Power & Light (Transmission)

Florida Power & Light (Transmission) supplied a marked aerial depicting the existing Transmission facilities in the project area. There are existing 138 kv overhead electric transmission lines running parallel on the west side of NW 7th Ave. The line continues north through the proposed 10-acre Truck Center site. There are currently 6 existing poles within the existing parking area landscape islands that are potentially impacted by the proposed improvements. Cost to relocate the poles to new landscape areas while leaving the overhead electric in the same relative position was estimated at approximately \$500,000.

8. FPL Fibernet

FPL Fibernet provided a screen shot map of the existing facilities within the project area, all of which are north of SFRC on the west side of the Turnpike. There are no facilities within the 10-acre or the 15-acre sites.

9. Miami-Dade Water and Sewer

Miami-Dade Water and Sewer provided an email response on November 19, 2015 stating that they had no facilities within the project area.

10. TECO Peoples Gas

Teco provided an email response on November 30, 2015 stating that they had no facilities within the project area.

11. Verizon

Verizon provided an email response on November 18, 2015 stating that they had no facilities within the project area.

APPENDIX A – SUNSHINE 811 INTERNET TICKET

Patricia Dickerson

From: irth_host@callsunshine.com
Sent: Tuesday, November 17, 2015 3:38 PM
To: Patricia Dickerson
Subject: SSOCOF CONFRM 2015/11/17 #00000 321510401-000 NORM DSGN NEW

CONFRM 00000 CALL SUNSHINE 11/17/15 15:38:05ET 321510401-000 DESIGN GRID GOLDEN GLADES MULTI MODAL FACILITY AND TRUCK CENTER Ticket : 321510401 Rev:000 Taken: 11/17/15 15:17ET

State: FL Cnty: DADE GeoPlace: GOLDEN GLADES
CallerPlace: GOLDEN GLADES
Subdivision:

Address :
Street : SR 9
Cross 1 : GOLDEN GLDS INTC EXT
Within 1/4 mile: Y

Locat: DESIGN TICKET FOR LIST OF UAO'S AROUND THE GOLDEN GLADES MULTI MODAL SITE AT NW 7TH AVE AND I-95/TURNPIKE AND SR 9.

:

Remarks : IN RESPONSE TO RECEIPT OF A DESIGN TICKET, SSOCOF PROVIDES THE ORIGINATOR OF THE DESIGN TICKET WITH A LIST OF SSOCOF MEMBERS IN THE VICINITY OF THE DESIGN PROJECT. SSOCOF DOES NOT NOTIFY SSOCOF MEMBERS OF THE RECEIPT BY SSOCOF OF A DESIGN TICKET. IT IS THE SOLE RESPONSIBILITY OF THE DESIGN ENGINEER TO CONTACT SSOCOF MEMBERS TO REQUEST INFORMATION ABOUT THE LOCATION OF SSOCOF MEMBERS' UNDERGROUND FACILITIES. SUBMISSION OF A DESIGN TICKET WILL NOT SATISFY THE REQUIREMENT OF CHAPTER 556, FLORIDA STATUTES, TO NOTIFY SSOCOF OF AN INTENT TO EXCAVATE OR DEMOLISH. THAT INTENT MUST BE MADE KNOWN SPECIFICALLY TO SSOCOF IN THE MANNER REQUIRED BY LAW. IN AN EFFORT TO SAVE TIME ON FUTURE CALLS, SAVE YOUR DESIGN TICKET NUMBER IF YOU INTEND TO BEGIN EXCAVATION WITHIN 90 DAYS OF YOUR DESIGN REQUEST. THE DESIGN TICKET CAN BE REFERENCED , AND THE INFORMATION ON IT CAN BE USED TO SAVE TIME WHEN YOU CALL IN THE EXCAVATION REQUEST.

*** LOOKUP BY MANUAL ***

:

Grids : 2555B8012A 2555B8012B 2555C8012A 2555C8012B 2555C8013D
Grids : 2555D8012A 2555D8012B 2555D8013D

Work date: 11/17/15 Time: 15:31ET Hrs notc: 000 Category: 6 Duration: UNKNOWN Due Date : 11/19/15 Time: 23:59ET
Exp Date : 12/17/15 Time: 23:59ET Work type: DESIGN Boring: N White-lined: N
Ug/Oh/Both: U Machinery: N Depth: UNK Permits: N N/A Done for : DESIGN

Company : BRINDLEY PIETERS & ASSOCIATES Type: CONT Co addr : 2600 MAITLAND CENTER PKWY
City : MAITLAND State: FL Zip: 32751
Caller : PATRICIA DICKERSON Phone: 386-822-9473
BestTime: 8-5
Fax : 386-822-9475

Email : PDICKERSON@BPA-ENGINEERS.COM

Submitted: 11/17/15 15:17ET Oper: PAT Chan: WEB Mbrs :
CC1280 LEONARD MAXWELL-NEWBOLD 954-447-8405
COMCAST CABLE
2601 SW 145TH AVE
MIRAMAR, FL 33027

Level 1: Member does not provide this service.
Level 2: Member does not provide this service.
Level 3: Member does not provide this service.
Level 4: Member does not provide this service.

CNM529 HASAN RIZVI 305-893-6511 Ext: 15005
CITY OF NORTH MIAMI
1815 NE 150TH ST
NORTH MIAMI , FL 33181

Level 1:
Level 2:
Level 3:
Level 4:

DCPWT OCTAVIO VIDAL 305-412-0891 Ext: 201
DADE COUNTY PUBLIC WORKS AND TRAFFIC
13284 SW 120TH ST
MIAMI, FL 33186

Level 1: SERVICES NOT PROVIDED BY MEMBER
Level 2: SERVICES NOT PROVIDED BY MEMBER
Level 3: SERVICES NOT PROVIDED BY MEMBER
Level 4: SERVICES NOT PROVIDED BY MEMBER

FDOT06 THOMAS MILLER 305-470-5757
AECOM
1001 NW 111TH AVE
MIAMI, FL 33172

Level 1: SERVICES NOT PROVIDED BY MEMBER
Level 2: SERVICES NOT PROVIDED BY MEMBER
Level 3: SERVICES NOT PROVIDED BY MEMBER
Level 4: SERVICES NOT PROVIDED BY MEMBER

FPLDAD TRACY STERN 800-868-9554
FLORIDA POWER & LIGHT
2900 CATHERINE ST
PALATKA, FL 32177

Level 1: NO FEE
Level 2: SERVICES NOT PROVIDED BY MEMBER
Level 3: SERVICES NOT PROVIDED BY MEMBER
Level 4: SERVICES NOT PROVIDED BY MEMBER

FPLFOD DANNY HASKETT** 305-552-2931
FPL FIBERNET LLC
9250 W FLAGLER ST
MIAMI, FL 33174

Level 1: NO CHARGE
Level 2: SERVICES NOT PROVIDED BY MEMBER
Level 3: SERVICES NOT PROVIDED BY MEMBER
Level 4: SERVICES NOT PROVIDED BY MEMBER

MCIU01 DEAN BOYERS 972-729-6322

MCI
2400 N GLENVILLE DR
RICHARDSON , TX 75082

Level 1: \$0

Level 2: SERVICES NOT PROVIDED BY MEMBER

Level 3: SERVICES NOT PROVIDED BY MEMBER

Level 4: SERVICES NOT PROVIDED BY MEMBER

MDWS SERGIO GARCIA 786-268-5320

MIAMI DADE WATER SEWER
3575 S LEJEUNE RD
MIAMI, FL 33146

Level 1: AS-BUILDS PROVIDED AT COST OF \$5.00 PER SHEET

Level 2: SERVICES NOT PROVIDED BY MEMBER

Level 3: SERVICES NOT PROVIDED BY MEMBER

Level 4: SERVICES NOT PROVIDED BY MEMBER

NMBPU KARIM ROSSY 305-948-2980 Ext: 7962

CITY OF NORTH MIAMI BEACH PUBLIC UTILIT
17050 NE 19TH AVENUE
NORTH MIAMI BEACH, FL 33162

Level 1: SERVICES NOT PROVIDED BY MEMBER

Level 2: SERVICES NOT PROVIDED BY MEMBER

Level 3: SERVICES NOT PROVIDED BY MEMBER

Level 4: SERVICES NOT PROVIDED BY MEMBER

PGSND YVONNE GOLDMAN 954-453-0824

TECO PEOPLES GAS- SOUTH FLORIDA
5101 NW 21ST AVE
SUITE 460
FT LAUDERDALE, FL 33309

Level 1:

Level 2:

Level 3:

Level 4:

SBF23 STEVE LOW 305-222-8745

AT & T/ DISTRIBUTION
9101 SW 24TH STREET
MIAMI, FL 33165

Level 1: FEE TO BE DETERMINED

Level 2: NOT PROVIDED BY MEMBER

Level 3: FEE TO BE DETERMINED

Level 4: NOT PROVIDED BY MEMBER

TL2051

APPENDIX B – SAMPLE CONTACT LETTER



212 East New York Avenue
DeLand, FL 32724
386.822.9473 . FAX 386.822.9475
www.bpa-engineers.com

November 18, 2015

Utility Pre-Design Contact

Project: Golden Glades Multimodal Facility and Truck Travel Center
Limits: Southwest Quadrant of the Golden Glades Interchange
Description: Multimodal Facility and Truck Center – Utility Assessment Report
FPID: 251684-4
County: Miami-Dade

The above referenced project will be advertised as a Design/Build type project. Currently, FDOT District VI is performing a PD&E Re-Evaluation for this project. As part of the PD&E Re-Evaluation, A Utility Assessment Report is being prepared. Information from your agency is necessary for inclusion in this report.

The purpose of this Utility Assessment report is to:

1. Identify utility agencies/owners within the study area.
2. Identify and describe the approximate location, type/size/material of all utility facilities within the study area.
3. Obtain order-of-magnitude cost estimate from identified utility agencies/owners within the study area.
4. Provide any potential mitigative recommendations which could be taken by the Department to minimize impacts.

The attached draft concept plan is preliminary and is not complete. The plans are subject to change as the project is developed.

Please mark up the attached draft concept plan and include your existing type, size, diameter, and voltage (if applicable) of your facilities. An order-of-magnitude cost estimate should be included for any potential adjustments of your existing facilities. At this time, we also ask that you provide any documents pertaining to the facilities you have within the project limits, related to the placement of your facilities within the right-of-way (permit, easement, etc.), as-built plans, and/or any other documentation you have available. This information can be submitted to me via email or by mail, but must be received by or before **December 11, 2015.**

We look forward to working with you in this endeavor. Please feel free to contact me with any questions you may have.

Sincerely,

Patricia Dickerson
Utilities Project Manager
Brindley Pieters & Associates, Inc.

PH: 386-822-9473
E-Mail: pdickerson@bpa-engineers.com

Enclosures

APPENDIX C – UTILITY RESPONSE INFORMATION

AT&T FLORIDA

Patricia Dickerson

From: LOW, STEVEN <sl4504@att.com>
Sent: Thursday, January 28, 2016 3:09 PM
To: Patricia Dickerson
Subject: RE: 251684-4, Golden Glades Multimodal and Truck Center - Utility Assessment Report



From: Patricia Dickerson [mailto:PDickerson@bpa-engineers.com]
Sent: Thursday, January 28, 2016 2:46 PM
To: LOW, STEVEN
Subject: RE: 251684-4, Golden Glades Multimodal and Truck Center - Utility Assessment Report
Importance: High

Steve,

The Final Utility Assessment Report is due next week, and therefore the FDOT will need some time to review before I submit. If you want your information to be included in the report, I need a map of your facilities (or even a marked up of the attached plan) and an order of magnitude cost to relocate if impacted.

Based on an old PD&E study, I believe you have a BFO cable running parallel to the I-95 Connector along the east side of the 10 acre site. Please confirm and provide any info you may have.

Thanks for your help on this.

Trish

From: Patricia Dickerson

Sent: Thursday, January 21, 2016 2:08 PM

To: 'sl4504@att.com' <sl4504@att.com>

Subject: RE: 251684-4, Golden Glades Multimodal and Truck Center - Utility Assessment Report

Importance: High

Steve,

Just following up on my request for any facilities you might have within the attached area so we can include the information in the Utility Assessment Report.

Thanks,

Trish

Patricia Dickerson

Utilities Project Manager

Brindley Pieters & Associates, Inc.

212 East New York Avenue

DeLand, FL 32724

PH: 386-822-9473

FAX: 386-822-9475

E-Mail: pdickerson@bpa-engineers.com

From: Patricia Dickerson

Sent: Wednesday, December 02, 2015 1:55 PM

To: 'leonard_maxwell-newbold@cable.comcast.com' <leonard_maxwell-newbold@cable.comcast.com>;

'ocm@miamidade.gov' <ocm@miamidade.gov>; 'angel.vargas@fpl.com' <angel.vargas@fpl.com>; 'karen.lund@fpl.com'

<karen.lund@fpl.com>; 'george.beck@fpl.com' <george.beck@fpl.com>; 'danny.haskett@fpl.com'

<danny.haskett@fpl.com>; 'pchon@miamidade.gov' <pchon@miamidade.gov>; 'sl4504@att.com' <sl4504@att.com>;

'karim.rossy@citynmb.com' <karim.rossy@citynmb.com>

Subject: RE: 251684-4, Golden Glades Multimodal and Truck Center - Utility Assessment Report

Just following up on my email previous sent on 11/18/15:

Just checking in on the status of your maps and order-or-magnitude costs for relocations based on the attached concept plans sent a couple weeks ago. As I stated below, I need all information by Dec. 11th (the sooner the better).

Thanks, and if you have any questions or need further information in order to provide the requested documents, please let me know.

Trish

From: Patricia Dickerson

Sent: Wednesday, November 18, 2015 2:17 PM

To: 'leonard_maxwell-newbold@cable.comcast.com' <leonard_maxwell-newbold@cable.comcast.com>; 'wpierre-louis@northmiamifl.gov' <wpierre-louis@northmiamifl.gov>; 'ocm@miamidade.gov' <ocm@miamidade.gov>; 'angel.vargas@fpl.com' <angel.vargas@fpl.com>; 'george.beck@fpl.com' <george.beck@fpl.com>; 'danny.haskett@fpl.com' <danny.haskett@fpl.com>; 'investigations@verizon.com' <investigations@verizon.com>; 'pchon@miamidade.gov' <pchon@miamidade.gov>; 'alquant@tecoenergy.com' <alquant@tecoenergy.com>; 'sl4504@att.com' <sl4504@att.com>

Cc: Mcneil, John B (john.mcneil@verizon.com) <john.mcneil@verizon.com>

Subject: 251684-4, Golden Glades Multimodal and Truck Center - Utility Assessment Report

To All,

We are assisting the FDOT on the PD&E Re-Evaluation for the Golden Glades Multimodal and Truck Center (FPID# 251684-4). I am contacting you all to get information for the Utility Assessment Report that will be part of the PD&E. I have attached a contact letter with more information and a set of "Conceptual Plans" to this email.

Please review the attached and provide a description or map of your facilities including any order-of-magnitude costs for necessary relocations based on the concept plans, and any other pertinent information we can include in the report. As you will see in the letter, due to the short timeframe associated with the Re-Evaluation, we need this information on or before **December 11th**.

Please forward this email on to others in your organization if you are not the correct contact.

If you have any questions or need additional information, please feel free to contact me.

Thanks,

Trish

Patricia Dickerson

Utilities Project Manager

Brindley Pieters & Associates, Inc.

212 East New York Avenue

DeLand, FL 32724

PH: 386-822-9473

FAX: 386-822-9475

E-Mail: pdickerson@bpa-engineers.com



NDADFLAC460925

16098

ARCH CREEK

NW 11TH AVE

SR-9A N

95

SR-9A S

RONALD REAGAN TPKE

41

SR-1 N

US-441 N

Greyhound-Miami North

NW 7TH AVE

SR-9 N

MIAMFLOL212905

OPA LOCKA

9

SR-9 S

9 N

CITY OF NORTH MIAMI



Public Works Division
Water & Sewer Department
Utility Operations Center
1815 N.E. 150 Street • North Miami, FL 33181 • T: (305) 895-9838 • F: (305) 787-1008

November 19, 2015

Patricia Dickerson
Utility Project Manager
Brindley Pieters & Associates, Inc.
212 East New York Avenue
Deland, Florida 32724

RE: Utility Assessment Report

Project: Golden Glades Multimodal Facility and Truck Travel Center
Limits: Southwest Quadrant of the Golden Glades Interchange
Description: Multimodal Facility and Truck Center – Utility Assessment Report
FPID: 251684-4
County: Miami-Dade

Dear Ms. Dickerson,

The City of North Miami has no facilities within the limits of the above referenced project.

If you have any question or require further information please do not hesitate to contact me at 305.895.9838, ext.15009 or e-mail: cokereke@northmiamifl.gov. Thanks.

Sincerely,

A handwritten signature in blue ink, which appears to be "Chuks U. Okereke", is written over a blue scribble. To the right of the signature, the date "11/19/15" is written in blue ink. Below the signature and date, there is a large, stylized blue flourish or scribble.

Chuks U. Okereke, P.E.
Sr. Civil Engineer
City of North Miami
Public Works Department

CITY OF NORTH MIAMI BEACH

Patricia Dickerson

From: Osborne, Aaron <Aaron.Osborne@citynmb.com>
Sent: Wednesday, December 02, 2015 4:57 PM
To: Patricia Dickerson
Cc: Rossy, Karim
Subject: RE: 251684-4, Golden Glades Multimodal and Truck Center - Utility Assessment Report
Attachments: W Atlas (Golden Glades Intermodal) - 251684-4.pdf

Follow Up Flag: Follow Up
Due By: Thursday, December 03, 2015 6:34 AM
Flag Status: Flagged

Good afternoon Ms. Patricia Dickerson,

Per your request, I am sending you a copy of our water atlas of your specified project area. In reference to the order-of-magnitude cost estimate for our utilities, the cost to relocate the 16 inch water main would be \$150 per L.F. and to relocate the 12 inch water main would be about \$100 per L.F. Please feel free to contact me if you have any questions. Thank you.

Best Regards,

Aaron Osborne, E.I.

Civil Engineer

City of North Miami Beach

17050 NE 19th Ave.

North Miami Beach, FL. 33162

Ph: 305-948-2980, ext. 7957

Fax: 305-957-3501

Email: Aaron.Osborne@citynmb.com

Engineering Lobby Hrs. Mon. - Fri. 8a.m. - 3p.m.

From: Patricia Dickerson [<mailto:PDickerson@BPA-Engineers.com>]

Sent: Wednesday, December 02, 2015 1:56 PM

To: leonard_maxwell-newbold@cable.comcast.com; ocm@miamidade.gov; angel.vargas@fpl.com; karen.lund@fpl.com; george.beck@fpl.com; 'danny.haskett@fpl.com' <danny.haskett@fpl.com>; pchon@miamidade.gov; sl4504@att.com; Rossy, Karim <Karim.Rossy@citynmb.com>

Subject: RE: 251684-4, Golden Glades Multimodal and Truck Center - Utility Assessment Report

Just following up on my email previous sent on 11/18/15:

Just checking in on the status of your maps and order-or-magnitude costs for relocations based on the attached concept plans sent a couple weeks ago. As I stated below, I need all information by Dec. 11th (the sooner the better).

Thanks, and if you have any questions or need further information in order to provide the requested documents, please let me know.

Trish

From: Patricia Dickerson

Sent: Wednesday, November 18, 2015 2:17 PM

To: 'leonard_maxwell-newbold@cable.comcast.com' <leonard_maxwell-newbold@cable.comcast.com>; 'wpierre-louis@northmiamifl.gov' <wpierre-louis@northmiamifl.gov>; 'ocm@miamidade.gov' <ocm@miamidade.gov>; 'angel.vargas@fpl.com' <angel.vargas@fpl.com>; 'george.beck@fpl.com' <george.beck@fpl.com>; 'danny.haskett@fpl.com' <danny.haskett@fpl.com>; 'investigations@verizon.com' <investigations@verizon.com>; 'pchon@miamidade.gov' <pchon@miamidade.gov>; 'alquant@tecoenergy.com' <alquant@tecoenergy.com>; 'sl4504@att.com' <sl4504@att.com>

Cc: Mcneil, John B (john.mcneil@verizon.com) <john.mcneil@verizon.com>

Subject: 251684-4, Golden Glades Multimodal and Truck Center - Utility Assessment Report

To All,

We are assisting the FDOT on the PD&E Re-Evaluation for the Golden Glades Multimodal and Truck Center (FPID# 251684-4). I am contacting you all to get information for the Utility Assessment Report that will be part of the PD&E. I have attached a contact letter with more information and a set of "Conceptual Plans" to this email.

Please review the attached and provide a description or map of your facilities including any order-of-magnitude costs for necessary relocations based on the concept plans, and any other pertinent information we can include in the report. As you will see in the letter, due to the short timeframe associated with the Re-Evaluation, we need this information on or before **December 11th**.

Please forward this email on to others in your organization if you are not the correct contact.

If you have any questions or need additional information, please feel free to contact me.

Thanks,

Trish

Patricia Dickerson

Utilities Project Manager

Brindley Pieters & Associates, Inc.

212 East New York Avenue

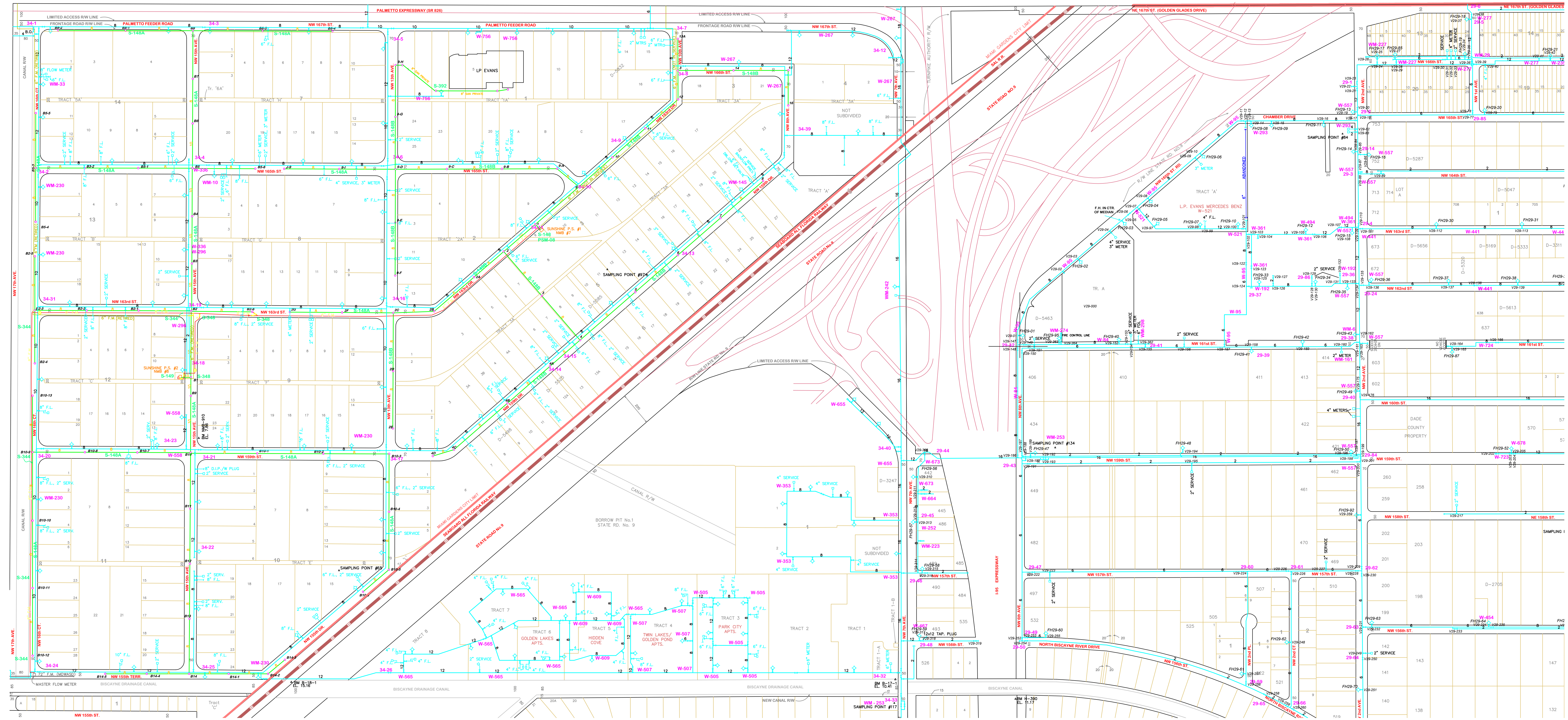
DeLand, FL 32724

PH: 386-822-9473

FAX: 386-822-9475

E-Mail: pdickerson@bpa-engineers.com

PLEASE NOTE: The City of North Miami Beach is a public entity subject to Chapter 119 of the Florida Statutes concerning public records. E-mail messages are covered under such laws and thus subject to disclosure. All e-mail sent and received is captured by our servers and kept as public record.



COMCAST

DADE COUNTY PUBLIC WORKS

(NO RESPONSE TO DATE)

FLORIDA POWER & LIGHT (DISTRIBUTION)

Patricia Dickerson

From: Vargas, Angel <Angel.Vargas@fpl.com>
Sent: Thursday, December 03, 2015 2:57 PM
To: Patricia Dickerson
Cc: Beck, George
Subject: RE: 251684-4, Golden Glades Multimodal and Truck Center - Utility Assessment Report

Hi Patricia,

This pole line going across the area labeled "10 Acres" is a Transmission pole line with Distribution underbuilt. I handle the Distribution portion only. To relocate, we need to find a location where we can install similar facilities and maintain continuity. Without an actual plan, it is hard to tell what it would cost to relocate. But, assuming that we can install a new pole line along the east side of the property (near I-95), the cost of relocating the Distribution facilities could be around \$250,000. You (or DOT) will have to coordinate with the local customers to transfer their service to the new poles; FPL would not do this work.

I have copied George Beck so he can speak for Transmission.

Please let me know if you need any additional information.

Thank you,

Angel A. Vargas
(O) 305-442-5129
(C): 305-495-9253

From: Patricia Dickerson [mailto:PDickerson@BPA-Engineers.com]
Sent: Thursday, December 03, 2015 1:48 PM
To: Vargas, Angel
Subject: RE: 251684-4, Golden Glades Multimodal and Truck Center - Utility Assessment Report

Angel,

Thanks for the marked plan. I will incorporate this information in the Utility Assessment Report.

Can you give me an order of magnitude cost estimate to relocate the OE in the area hatched and labeled as 10 acres if needed?

Thanks
Trish

From: Vargas, Angel [mailto:Angel.Vargas@fpl.com]
Sent: Thursday, December 03, 2015 10:56 AM
To: Patricia Dickerson <PDickerson@BPA-Engineers.com>
Subject: RE: 251684-4, Golden Glades Multimodal and Truck Center - Utility Assessment Report

Hi Patricia,

Here are the marked road plan showing the approximate location of FPL facilities and the record drawings of such facilities within the boundaries of this project. Please let me know if you have any question.

Thank you,

Angel A. Vargas
(O) 305-442-5129
(C): 305-495-9253

From: Patricia Dickerson [<mailto:PDickerson@BPA-Engineers.com>]

Sent: Wednesday, December 02, 2015 1:56 PM

To: leonard_maxwell-newbold@cable.comcast.com; ocm@miamidade.gov; Vargas, Angel; Lund, Karen; Beck, George; Haskett, Danny; pchon@miamidade.gov; sl4504@att.com; karim.rossy@citynmb.com

Subject: RE: 251684-4, Golden Glades Multimodal and Truck Center - Utility Assessment Report

This is an EXTERNAL email. Exercise caution. DO NOT open attachments or click links from unknown senders or unexpected email.

Just following up on my email previous sent on 11/18/15:

Just checking in on the status of your maps and order-of-magnitude costs for relocations based on the attached concept plans sent a couple weeks ago. As I stated below, I need all information by Dec. 11th (the sooner the better).

Thanks, and if you have any questions or need further information in order to provide the requested documents, please let me know.

Trish

From: Patricia Dickerson

Sent: Wednesday, November 18, 2015 2:17 PM

To: 'leonard_maxwell-newbold@cable.comcast.com' <leonard_maxwell-newbold@cable.comcast.com>; 'wpierre-louis@northmiamifl.gov' <wpierre-louis@northmiamifl.gov>; 'ocm@miamidade.gov' <ocm@miamidade.gov>; 'angel.vargas@fpl.com' <angel.vargas@fpl.com>; 'george.beck@fpl.com' <george.beck@fpl.com>; 'danny.haskett@fpl.com' <danny.haskett@fpl.com>; 'investigations@verizon.com' <investigations@verizon.com>; 'pchon@miamidade.gov' <pchon@miamidade.gov>; 'alquant@tecoenergy.com' <alquant@tecoenergy.com>; 'sl4504@att.com' <sl4504@att.com>

Cc: Mcneil, John B (john.mcneil@verizon.com) <john.mcneil@verizon.com>

Subject: 251684-4, Golden Glades Multimodal and Truck Center - Utility Assessment Report

To All,

We are assisting the FDOT on the PD&E Re-Evaluation for the Golden Glades Multimodal and Truck Center (FPID# 251684-4). I am contacting you all to get information for the Utility Assessment Report that will be part of the PD&E. I have attached a contact letter with more information and a set of "Conceptual Plans" to this email.

Please review the attached and provide a description or map of your facilities including any order-of-magnitude costs for necessary relocations based on the concept plans, and any other pertinent information we can include in the report. As you will see in the letter, due to the short timeframe associated with the Re-Evaluation, we need this information on or before **December 11th**.

Please forward this email on to others in your organization if you are not the correct contact.

If you have any questions or need additional information, please feel free to contact me.

Thanks,

Trish

Patricia Dickerson
Utilities Project Manager

Brindley Pieters & Associates, Inc.

212 East New York Avenue

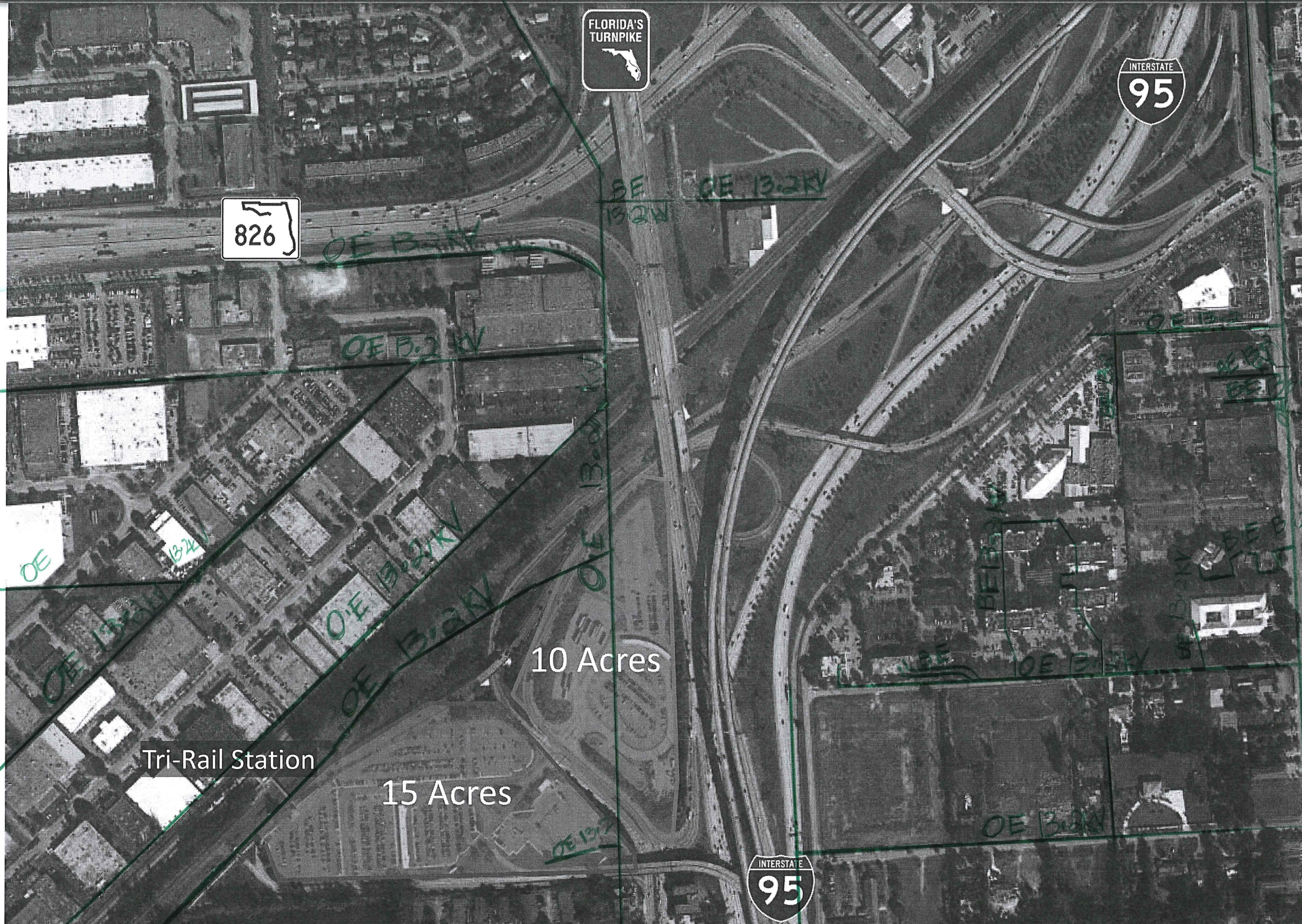
DeLand, FL 32724

PH: 386-822-9473

FAX: 386-822-9475

E-Mail: pdickerson@bpa-engineers.com

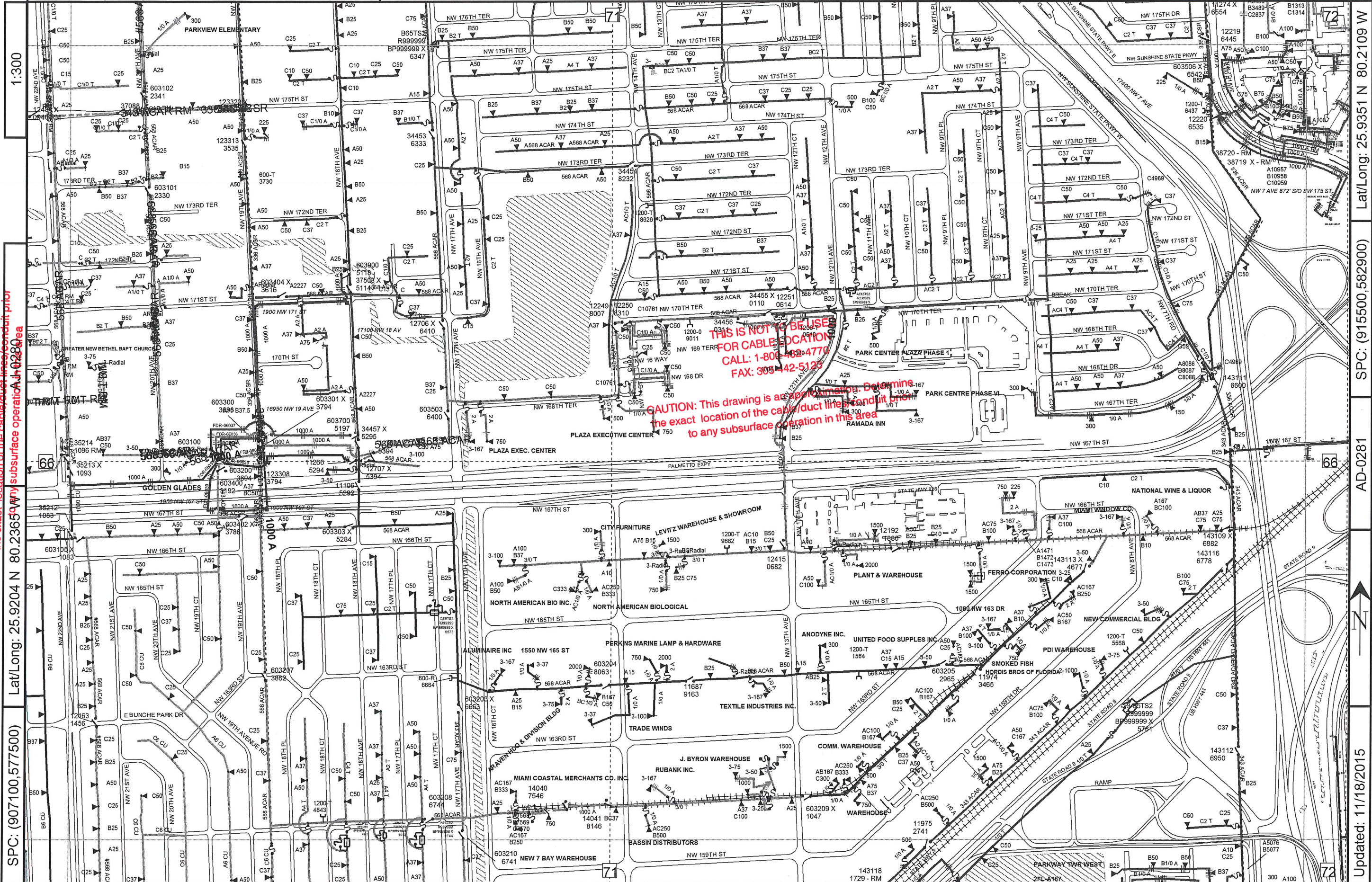
Golden Glades Interchange - Existing Conditions



Call before you dig! 1-800-432-4770

AG-0283

Confidential: For Florida Power & Light Company use only.



THIS IS NOT TO BE USED
 FOR CABLE LOCATION
 CALL: 1-800-432-4770
 FAX: 305-442-5123

CAUTION: This drawing is an approximation. Determine
 the exact location of the cable/duct lines/conditions prior
 to any subsurface operation in this area

THIS IS NOT TO BE USED
 FOR CABLE LOCATION
 CALL: 1-800-432-4770
 FAX: 305-442-5123

CAUTION: This drawing is an approximation. Determine
 the exact location of the cable/duct lines/conditions prior
 to any subsurface operation in this area

SPC: (907100,577500)

1:300

County: Dade

Mgmt Area: Northeast

Svc Ctr: Northeast

AG-0277

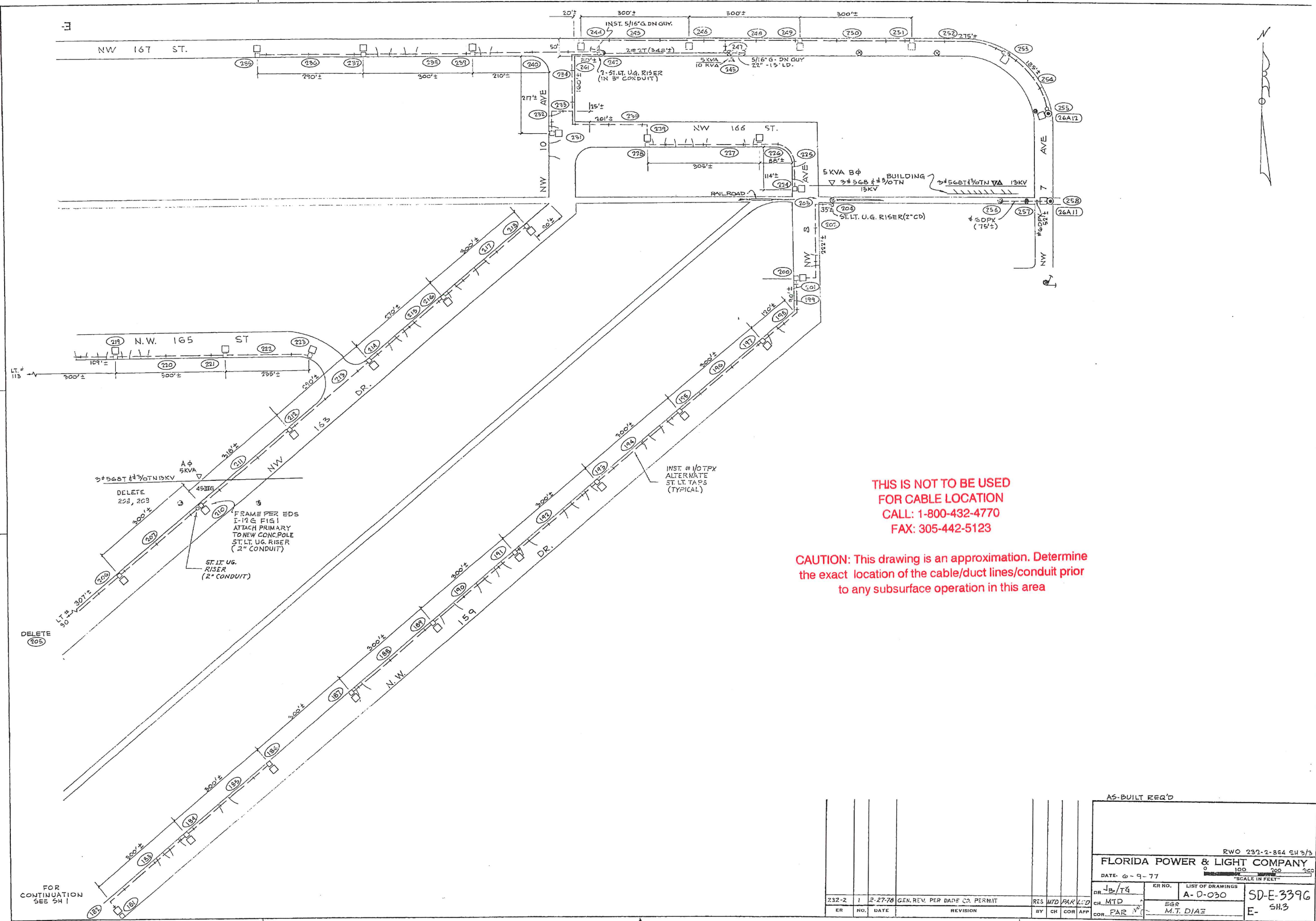
Primary Map: AG-0280

Lat/Long: 25.9351 N 80.2109 W

SPC: (915500,582900)

AD-0281

Updated: 11/18/2015

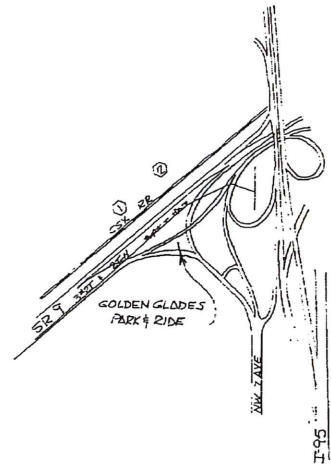


**THIS IS NOT TO BE USED
FOR CABLE LOCATION
CALL: 1-800-432-4770
FAX: 305-442-5123**

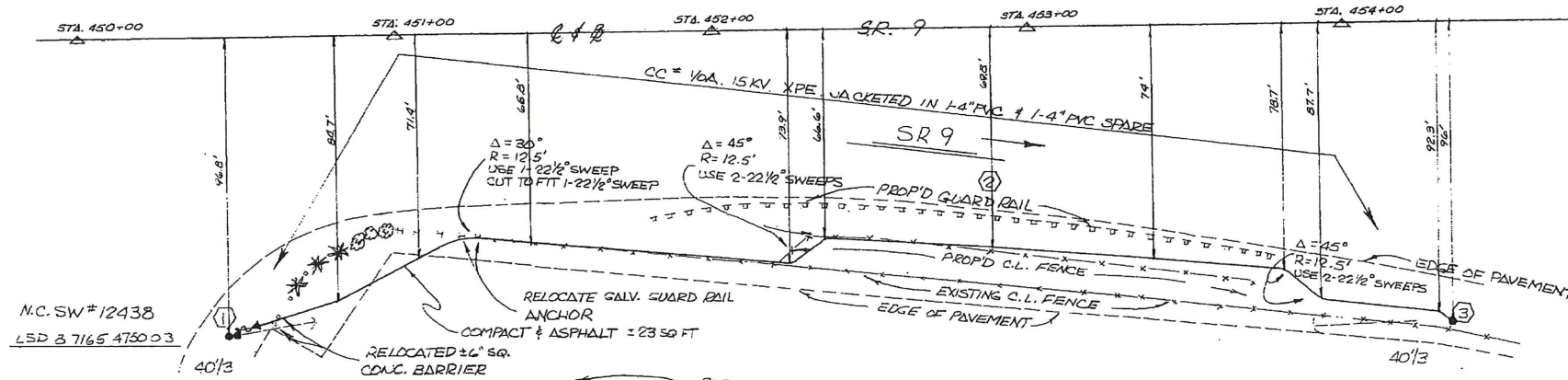
**CAUTION: This drawing is an approximation. Determine
the exact location of the cable/duct lines/conduit prior
to any subsurface operation in this area**

FOR
CONTINUATION
SEE SH 1

										AS-BUILT REQ'D	
RWO 232-2-884 SH 3/3											
FLORIDA POWER & LIGHT COMPANY											
DATE 6-9-77											
SCALE IN FEET											
DR. 1/14		ER NO. A-0-030		LIST OF DRAWINGS		SD-E-3396				E-5H3	
CH. MID		EGG		COR. FAR		M.T. DIAE					
232-2	1	2-27-78	GEN. REV. PER DADE CO. PERMIT	RES	MTD	PAR	LTD	CH	MID	COR	FAR
ER	NO.	DATE	REVISION	BY	CHK	COR	APP				



LOCATION SKETCH
N.T.S.



N.C. SW # 12438
LSD 3 7165 4750 03

INSTALL: 1-4" RISER SHIELD ON NW QUAD OF POLE.
P.H. & LA BRACKET ON S. QUAD OF POLE
3-13KV RUBBER TERM'S. & 3-10KV Z.O. LA'S SIMILAR TO UH-50, SH 2, D.C.S. JULY '87
STUB 2-4" PVC 90° ELLS 4" ABOVE GRADE & CAP SPARE.
FUSE WITH 200A SOLID BLADES.

CONSTRUCTION NOTES:

- TRENCH TO HAVE 36" MIN. COVER.
- CABLE TO BE CC # 10A, 15KV XPE, TRIPLEX JACKETED.
- P.V.C.A. INDICATES 1-4" PVC SPARE CONDUIT AND 1-4" PVC CONDUIT WITH 1/0 Δ 15KV TPX CABLE PULLED THROUGH IT IS TO BE INSTALLED.

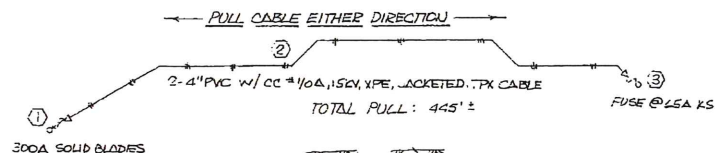
GENERAL NOTES:

- COORDINATE WITH D.H. SIC 7485-4-864
- PRIMARY SERVES 'METRO DADE COUNTY' CORRECTIONAL INSTITUTE, OUTAGE TO BE KEPT TO MINIMUM TIME NEEDED, AND WORKED DURING DAYLIGHT HOURS. 24 HRS. PRIOR TO CUT-OVER CONTACT 'SHIFT COMMANDER AT 685-5022.

SURVEY NOTE:

SEE ENGINEER BEFORE STAKING.

INSTALL: 1-4" RISER SHIELD ON N.W. QUAD OF POLE
P.H. & LA BRACKET ON N QUAD OF POLE.
3-13KV RUBBER TERM'S & 3-10KV Z.O. LA'S SIMILAR TO UH-50, SH 2 D.C.S. JULY '87
STUB 2-4" PVC 90° ELLS 4" ABOVE GRADE & CAP SPARE.
FUSE AT 65A KS



TYPICAL TRENCH DETAIL

LOC	TLM DATA
3	3 7165 5761 01
TLM UPDATE NO: EFV 02	

48 HRS. PRIOR TO START OF CONSTRUCTION, NOTIFY THE FOLLOWING UTILITIES TO FIELD MARK BURIED FACILITIES:

- CITY GAS CO.
- PEOPLES GAS CO. 1-800-432-4770
- ENRON PIPELINE (FLA. GAS TRANSM.)

THIS IS NOT TO BE USED FOR CABLE LOCATION
CALL: 1-800-432-4770
FAX: 305-442-5123

REIMBURSABLE D.O.T. PROJECT
PROJECT # 99006-3230

CAUTION: This drawing is an approximation. Determine the exact location of the cable/duct lines/conduit prior to any subsurface operation in this area

STAKES
ST. RD. (SR 9) SR 9
SURVEY IS BUILT
FOREMAN'S AS BUILT
MAP POST: D-030, D-040

NAME OF GAS CO. UNCLE
SERIAL NO. 9424
DATE OF REQUEST 2/8/88
PHONE 1-800-432-4770
NAME OF GAS REP. ANNETTE
GAS IN FIELD? X

DATE		SCALE 0.1"=1'		INSTALL: 2-4" OVERLAP PROP'D PEDESTRIAN OVERPASS FOR TR. COUNTY COMMUTER RAIL N.T.S. GOLDEN GLADES PARK & RIDE (SR 9) LOCN: 864 ENGR: LK MARSH		D-030, D-040		LATEST REVISION DATE 5-2-89	
DR. J.M.		ER NO.		APPROVED		COR		Sheet of 50-E-5447	
NO. 1		REVISION		BY CH CORAPP		NO. DATE		REV. NO.	
5-2-89		SURVEY AS-BUILT 4-15-88		BY J.D.		NO. DATE		REV. NO.	
2-8-88		SIC 7485-4-864 (MA-PB 167 PG. 1)		BY J.M.		NO. DATE		REV. NO.	
2-8-88		SIC 7486-4-864 (T. TO 3)		BY CH CORAPP		NO. DATE		REV. NO.	

FLORIDA POWER & LIGHT (TRANSMISSION)

Patricia Dickerson

From: Beck, George <GEORGE.BECK@fpl.com>
Sent: Tuesday, January 19, 2016 5:19 PM
To: Patricia Dickerson
Cc: Vargas, Angel; Borrelli, Natalie
Subject: RE: 251684-4; Golden Glades Multimodal Center; FPL Plan review and no conflict letter

Follow Up Flag: Follow Up
Due By: Tuesday, January 19, 2016 6:50 PM
Flag Status: Flagged

Hi Patricia,

Assuming five tangent pole locations, for a high level ballpark estimate, please use relocation cost of \$500,000.

Best Regards,

George J. Beck, P.E.
Florida Power and Light

“Changing the Current”

This document contains non-public transmission information and must be treated in accordance with the FERC Standards of Conduct and CEII.

From: Patricia Dickerson [mailto:PDickerson@BPA-Engineers.com]
Sent: Thursday, January 07, 2016 3:39 PM
To: Beck, George
Cc: Vargas, Angel
Subject: RE: 251684-4; Golden Glades Multimodal Center; FPL Plan review and no conflict letter

This is an EXTERNAL email. Exercise caution. DO NOT open attachments or click links from unknown senders or unexpected email.

Hey George, I have an additional question:

I know you have multiple poles within landscape areas in the current configuration, but the concept show poles in travel areas. I understand that the concept could be adjusted to avoid most possible conflicts on your existing poles, but could you provide an order of magnitude price to relocate the OE (I would assume you could stay within the approximate same air space, but may need to adjust pole locations). This price would be included in the utility assessment package to express the high cost of not avoiding your facilities.

Thanks
Trish

From: Beck, George [mailto:GEORGE.BECK@fpl.com]
Sent: Thursday, January 07, 2016 8:17 AM
To: Patricia Dickerson <PDickerson@BPA-Engineers.com>

Cc: Vargas, Angel <Angel.Vargas@fpl.com>

Subject: 251684-4; Golden Glades Multimodal Center; FPL Plan review and no conflict letter

Hi Patricia,

Let me know if you need more info.

Best Regards,

George J. Beck, PE

FPL Transmission Engineering – Relocations

700 Universe Blvd., TS4/JW

Juno Beach, FL 33408

15430 Endeavor Drive

Jupiter, FL

George.Beck@FPL.com

(561) 904-3604 tel

(561) 904-3710 fax

Power Delivery

Transforming our business

This document contains non-public transmission information and must be treated in accordance with the FERC Standards of Conduct and CEII. This message may contain confidential and/or privileged information of Florida Power & Light Company. If you are not the intended recipient please 1) do not disclose, copy, distribute or use this information, 2) advise the sender by return email, and 3) delete all copies from your computer. Your cooperation is greatly appreciated.



January 7, 2016

Patricia Dickerson
Brindley Pieters & Associates
212 E. New York Ave
Deland, FL 32724

RE: **Adjustment of Utilities**
Road: N/A
County: **Miami Dade**
Description: **Golden Glades Multimodal Facility**
Financial Project ID: **251684-4**

Dear Ms. Dickerson,

Thank you for informing us of this proposed project. If you have not already done so, please make sure to contact FPL Distribution to confirm their facilities at this location. We have reviewed the set of sketches sent to us on 11/18/15 by your firm and our records. It has been determined that Florida Power & Light has existing Transmission facilities within the project boundaries as marked per the FDOT Utility Accommodation Manual section 4.9.1 in 'Green' at approximate locations on the sheets enclosed herewith. Please show them on future revisions of the Plans at surveyed 'OE' locations. Although these facilities are not anticipated in direct conflict, please note the following while working in the vicinity of FPL's existing facilities:

1. Contractors must maintain clearances, as required by OSHA, when working in the proximity of FPL's high-voltage transmission conductors & lower voltage Distribution conductors
2. The roadway contractor must maintain access to all FPL facilities at all times during construction
3. All existing facilities must remain energized during road construction

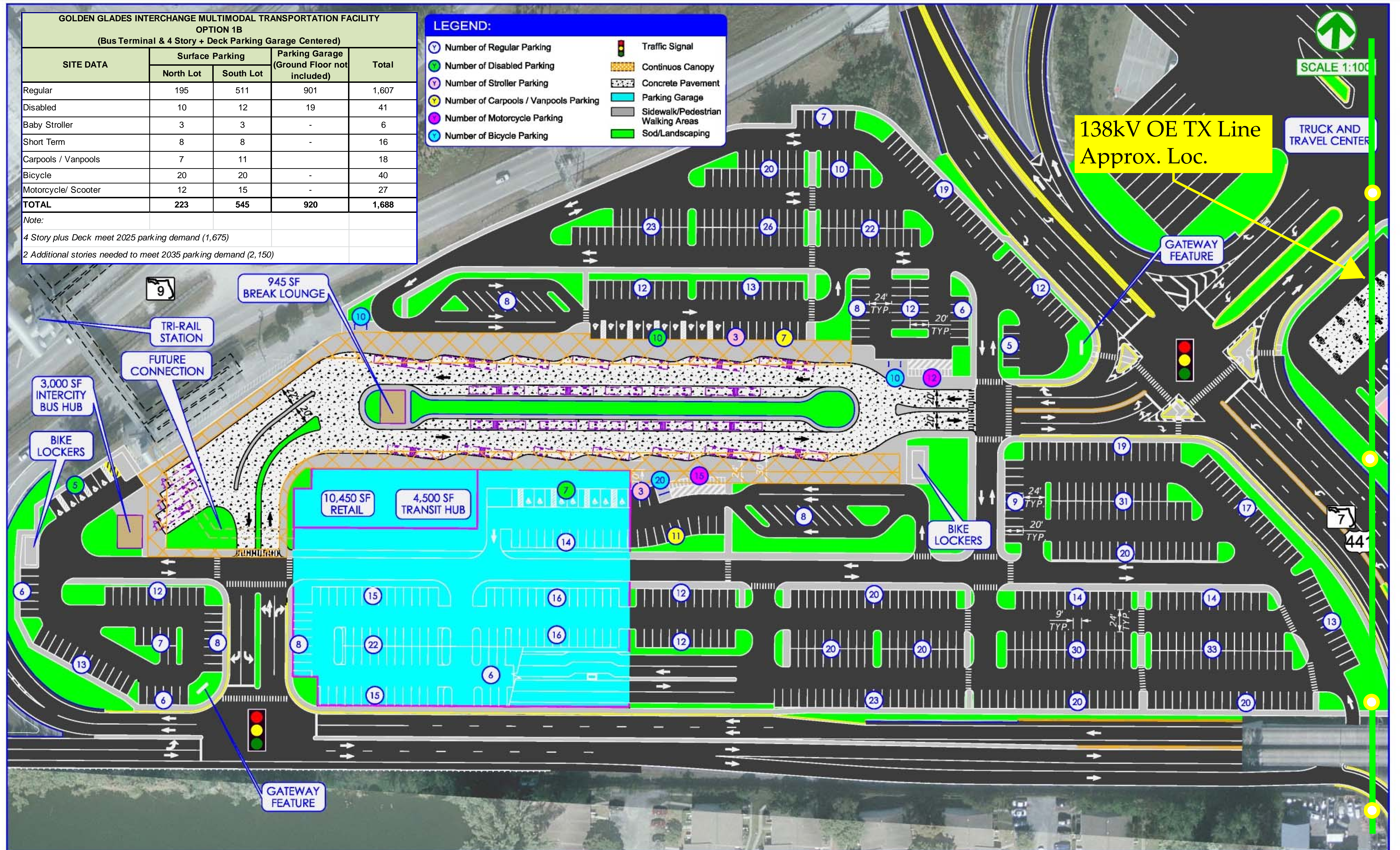
If you have additional questions, please give me a call at 561-904-3604.

Sincerely,

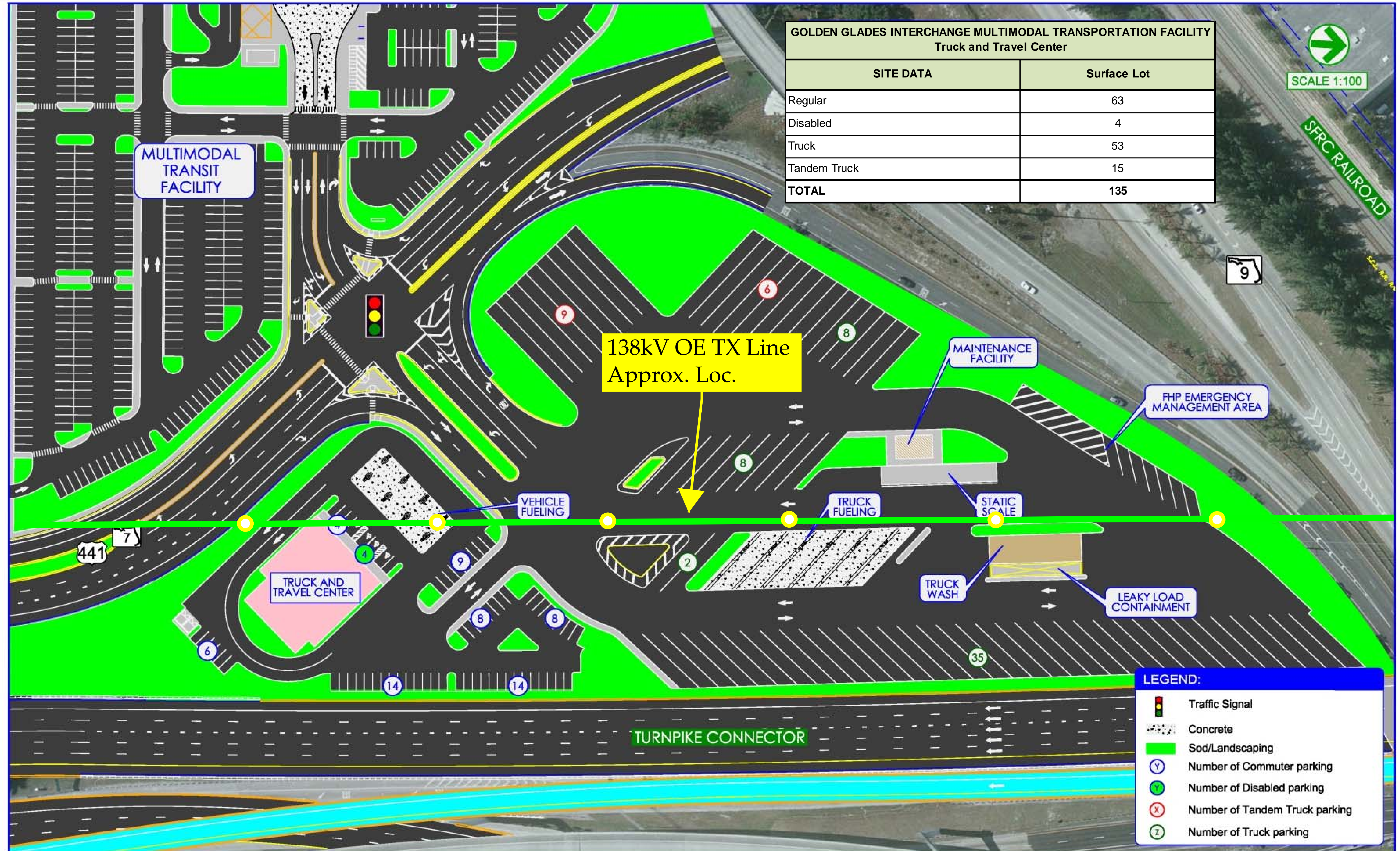
George J. Beck, P.E.
Transmission Relocation Coordinator

enclosure

Conceptual Layout – Multimodal Facility



Conceptual Layout – Truck Travel Center



FPL FIBERNET

Patricia Dickerson

From: Haskett, Danny <Danny.Haskett@FPLFiberNet.com>
Sent: Wednesday, December 02, 2015 3:34 PM
To: Patricia Dickerson
Cc: Vilas, Jesus
Subject: RE: 251684-4, Golden Glades Multimodal and Truck Center - Utility Assessment Report
Attachments: #251684-4-52-01-Golden Glades Multimodal Facility & Truck Travel Center-Miami-Location Map & Cover Letter.pdf

Follow Up Flag: Follow Up
Due By: Thursday, December 03, 2015 6:34 AM
Flag Status: Flagged

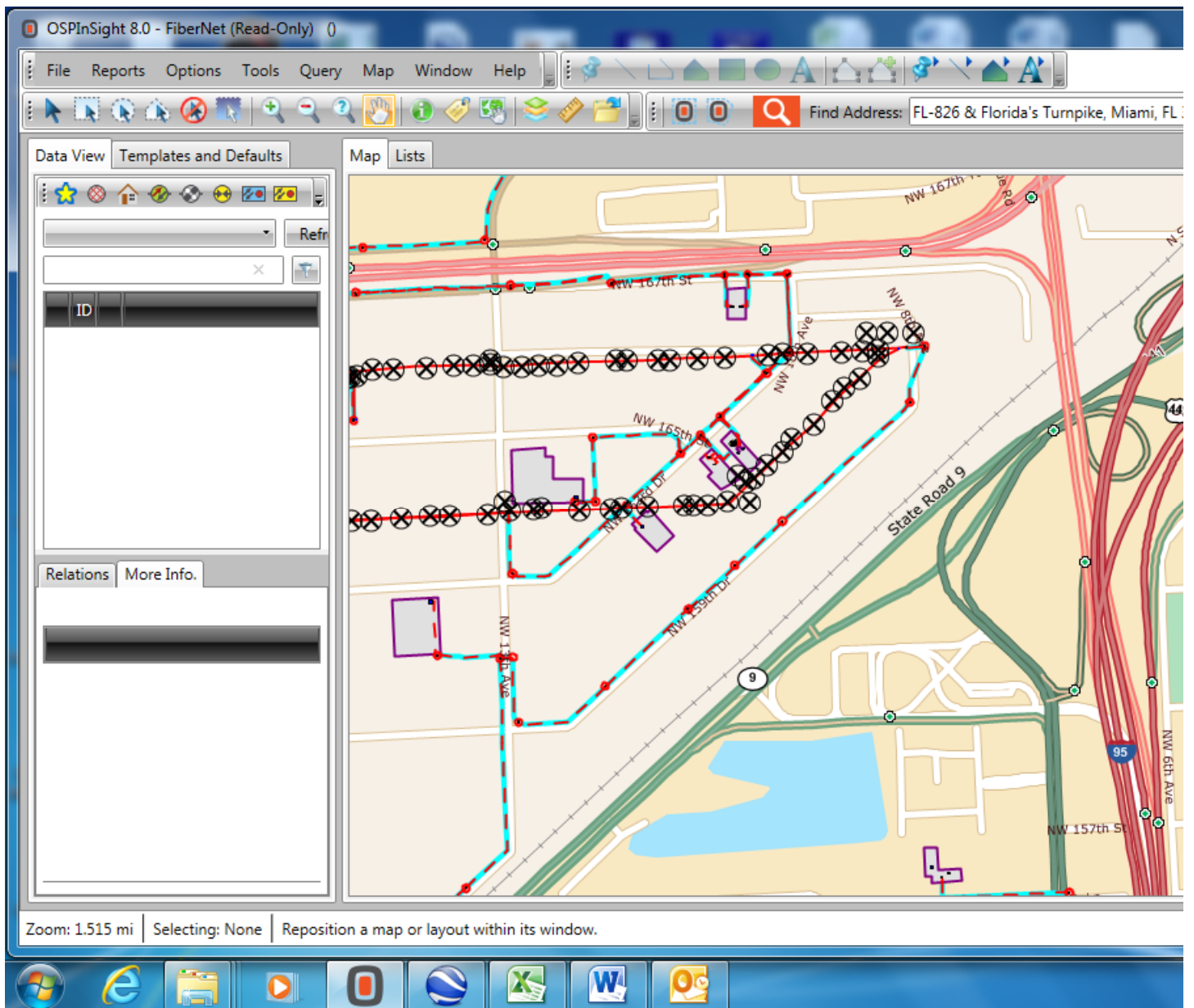
Patricia,

FPL FiberNet has no facilities within the limits of the above-referenced project in Miami. On the map below, the area of the proposed project appears clear of our facilities.

Regards, Danny



Danny Haskett | Associate Project Manager | 9250 W Flagler St Miami, FL 33174
O 305-552-2931 | C 786-246-7827 | NOC 1-866-553-4237 (option 3) | FPLFiberNet.com



From: Patricia Dickerson [mailto:PDickerson@BPA-Engineers.com]

Sent: Wednesday, November 18, 2015 2:18 PM

To: leonard_maxwell-newbold@cable.comcast.com; wpierre-louis@northmiamifl.gov; ocm@miamidade.gov; Vargas, Angel; Beck, George; Haskett, Danny; investigations@verizon.com; pchon@miamidade.gov; alquant@tecoenergy.com; sl4504@att.com

Cc: Mcneil, John B (john.mcneil@verizon.com)

Subject: 251684-4, Golden Glades Multimodal and Truck Center - Utility Assessment Report

This is an EXTERNAL email. Exercise caution. DO NOT open attachments or click links from unknown senders or unexpected email.

To All,

We are assisting the FDOT on the PD&E Re-Evaluation for the Golden Glades Multimodal and Truck Center (FPID# 251684-4). I am contacting you all to get information for the Utility Assessment Report that will be part of the PD&E. I have attached a contact letter with more information and a set of "Conceptual Plans" to this email.

Please review the attached and provide a description or map of your facilities including any order-of-magnitude costs for necessary relocations based on the concept plans, and any other pertinent information we can include in the report. As you will see in the letter, due to the short timeframe associated with the Re-Evaluation, we need this information on or before **December 11th**.

Please forward this email on to others in your organization if you are not the correct contact.

If you have any questions or need additional information, please feel free to contact me.

Thanks,

Trish

Patricia Dickerson
Utilities Project Manager
Brindley Pieters & Associates, Inc.
212 East New York Avenue
DeLand, FL 32724
PH: 386-822-9473
FAX: 386-822-9475
E-Mail: pdickerson@bpa-engineers.com

MIAMI-DADE WATER & SEWER

Patricia Dickerson

From: Chong, Patrick A. (WASD) <PCHON@miamidade.gov>
Sent: Tuesday, November 24, 2015 9:08 AM
To: Patricia Dickerson
Cc: Garcia, Sergio (WASD); Fernandez-Cuervo, Victor (WASD)
Subject: RE: 251684-4, Golden Glades Multimodal and Truck Center - Utility Assessment Report
Attachments: Golden Glades_Conceptual Site Plans.pdf; GG Multimodal Utility Contact Letter 11-18-15.pdf

Good morning Patricia,

Miami Dade Water and Sewer Department does not have utilities within the proposed Golden Glades Interchange or NW 12 St Multimodal Facility/Truck Travel Center. Please contact WASD's New Customer Division regarding water and sewer service requirements for facilities shown in attached PDF.

Regards,

Patrick Chong, Utility Coordination Supervisor
Miami-Dade Water and Sewer Department
786-268-5255
miamidade.gov/water

Connect With Us on [Twitter](#) | [Facebook](#)



From: Patricia Dickerson [mailto:PDickerson@BPA-Engineers.com]
Sent: Wednesday, November 18, 2015 2:18 PM
To: leonard_maxwell-newbold@cable.comcast.com; wpierre-louis@northmiamifl.gov; Marin, Octavio (PWWM); angel.vargas@fpl.com; george.beck@fpl.com; 'danny.haskett@fpl.com'; investigations@verizon.com; Chong, Patrick A. (WASD); alquant@tecoenergy.com; sl4504@att.com
Cc: Mcneil, John B (john.mcneil@verizon.com)
Subject: 251684-4, Golden Glades Multimodal and Truck Center - Utility Assessment Report

To All,

We are assisting the FDOT on the PD&E Re-Evaluation for the Golden Glades Multimodal and Truck Center (FPID# 251684-4). I am contacting you all to get information for the Utility Assessment Report that will be part of the PD&E. I have attached a contact letter with more information and a set of "Conceptual Plans" to this email.

Please review the attached and provide a description or map of your facilities including any order-of-magnitude costs for necessary relocations based on the concept plans, and any other pertinent information we can include in the report. As you will see in the letter, due to the short timeframe associated with the Re-Evaluation, we need this information on or before **December 11th**.

Please forward this email on to others in your organization if you are not the correct contact.

If you have any questions or need additional information, please feel free to contact me.

Thanks,
Trish

Patricia Dickerson
Utilities Project Manager
Brindley Pieters & Associates, Inc.
212 East New York Avenue
DeLand, FL 32724
PH: 386-822-9473
FAX: 386-822-9475
E-Mail: pdickerson@bpa-engineers.com

TECO PEOPLES GAS

Patricia Dickerson

From: Roche, Alex R. <arroche@tecoenergy.com>
Sent: Monday, November 30, 2015 11:57 AM
To: Patricia Dickerson
Subject: 251684-4 Golden Glades Multimodal
Attachments: Golden Glades_Conceptual Site Plans.pdf

Patricia,

TECO does not have facilities within the limits of the referenced project.

Thanks,
Alex Roche

NOTICE: This email is intended only for the individual(s) to whom it is addressed and may contain confidential information. If you have received this email by mistake, please notify the sender immediately, delete this email from your system and do not copy or disclose it to anyone else. Although we take precautions to protect against viruses, we advise you to take your own precautions to protect against viruses as we accept no liability for any which remain.

VERIZON

Patricia Dickerson

From: Mcneil, John B <john.mcneil@verizon.com>
Sent: Wednesday, November 18, 2015 3:46 PM
To: Patricia Dickerson
Subject: RE: 251684-4, Golden Glades Multimodal and Truck Center - Utility Assessment Report

I am glad to say the Verizon (MCI) does not have any facilities in the project limits of either intersection.
Please list us as No Facilities.



John McNeil
Engineer IV, Southeast Region (FL)

210 Recker Highway
Auburndale, FL 33823

O 863 965 6438 | M 904 234 6032
john.mcneil@verizon.com

From: Patricia Dickerson [mailto:PDickerson@BPA-Engineers.com]
Sent: Wednesday, November 18, 2015 2:18 PM
To: leonard_maxwell-newbold@cable.comcast.com; wpierre-louis@northmiamifl.gov; ocm@miamidade.gov; angel.vargas@fpl.com; george.beck@fpl.com; 'danny.haskett@fpl.com'; Investigations; pchon@miamidade.gov; alquant@tecoenergy.com; sl4504@att.com
Cc: Mcneil, John B
Subject: 251684-4, Golden Glades Multimodal and Truck Center - Utility Assessment Report

To All,

We are assisting the FDOT on the PD&E Re-Evaluation for the Golden Glades Multimodal and Truck Center (FPID# 251684-4). I am contacting you all to get information for the Utility Assessment Report that will be part of the PD&E. I have attached a contact letter with more information and a set of "Conceptual Plans" to this email.

Please review the attached and provide a description or map of your facilities including any order-of-magnitude costs for necessary relocations based on the concept plans, and any other pertinent information we can include in the report. As you will see in the letter, due to the short timeframe associated with the Re-Evaluation, we need this information on or before **December 11th**.

Please forward this email on to others in your organization if you are not the correct contact.

If you have any questions or need additional information, please feel free to contact me.

Thanks,
Trish

Patricia Dickerson
Utilities Project Manager
Brindley Pieters & Associates, Inc.
212 East New York Avenue
DeLand, FL 32724

PH: 386-822-9473

FAX: 386-822-9475

E-Mail: pdickerson@bpa-engineers.com