

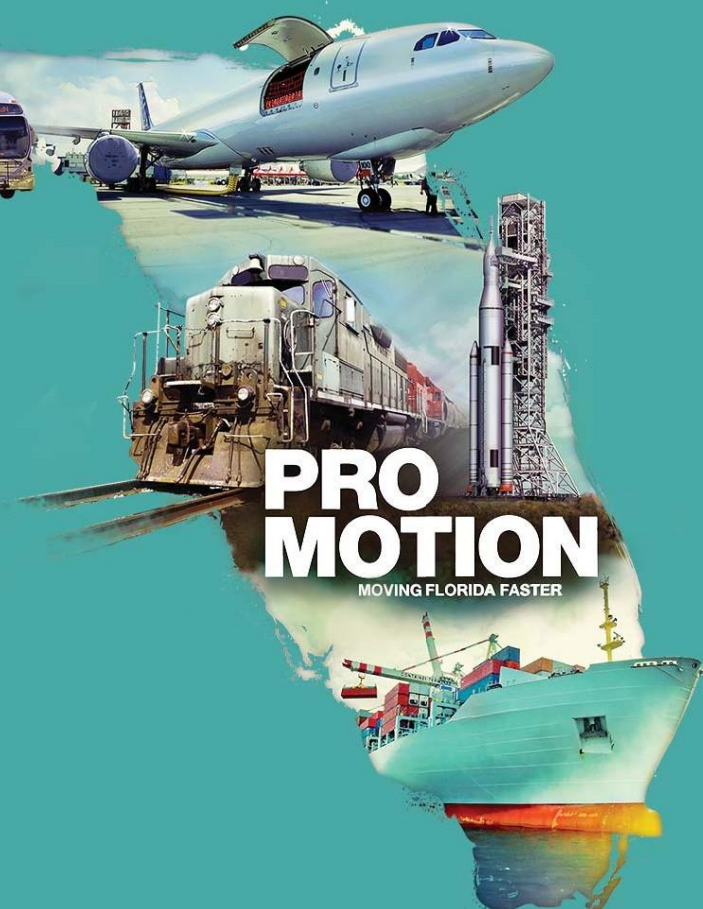
CITY OF DORAL SUBAREA FREIGHT MOBILITY IMPROVEMENT PLAN

FM# 437945-1-22-01

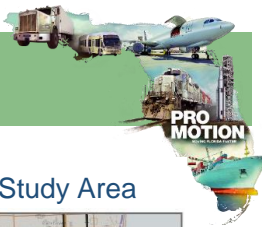
FACT SHEET

This study is part of a series of Subarea Freight Mobility Plans prepared by the Florida Department of Transportation District 6. The strategy is to advance the implementation of the regional freight and logistics system by partnering with local communities and stakeholders to identify, prioritize and program improvements from the subarea freight plans. The plan documents existing conditions, challenges and opportunities, evaluates a range of growth scenarios and provides a comprehensive list of improvements to enhance freight mobility.

Florida Department of Transportation | District 6
1000 NW 111th Avenue
Miami, FL 33172



Public participation is solicited without regard to race, color, national origin, age, sex, religion, disability, or family status.



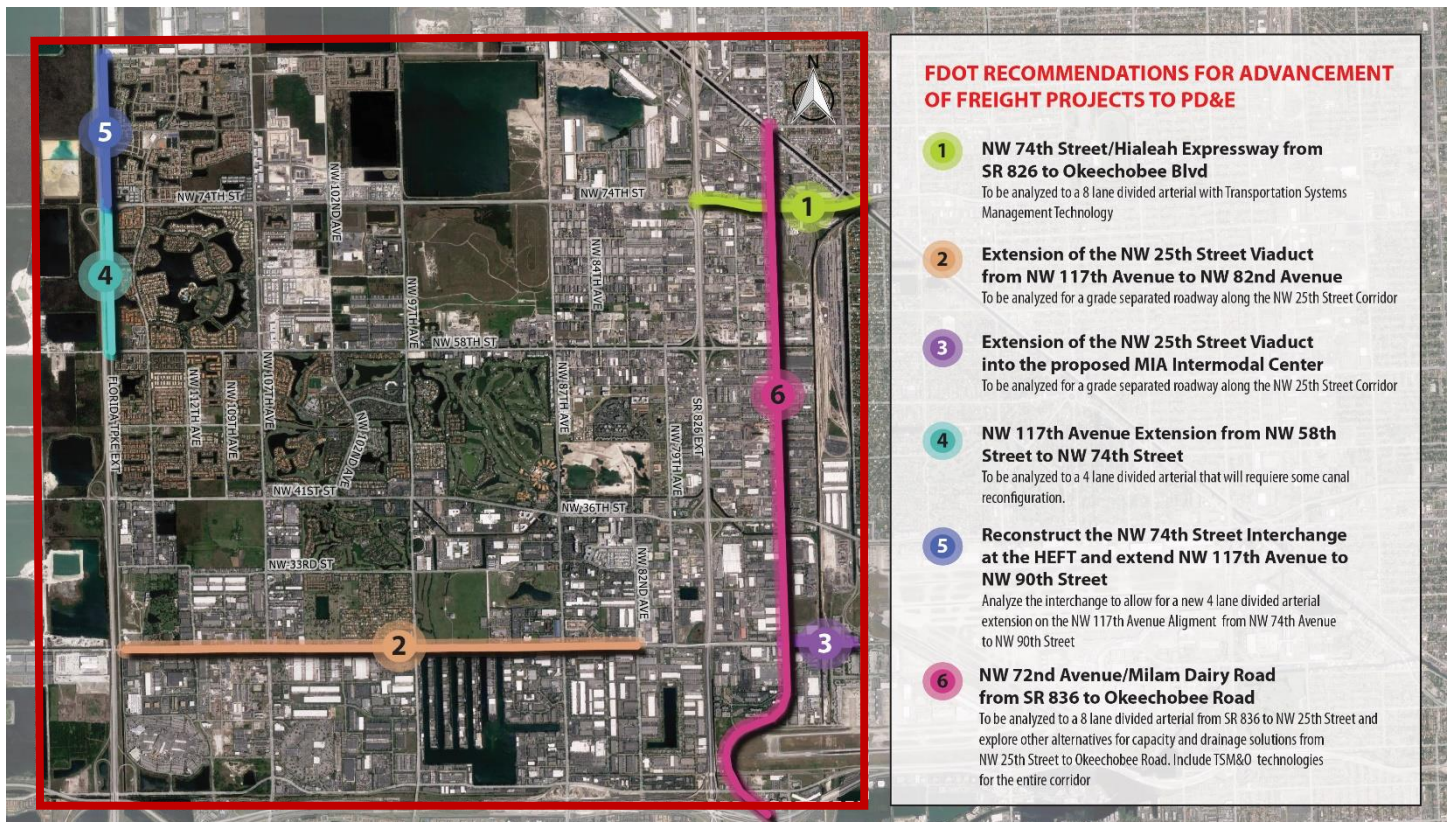
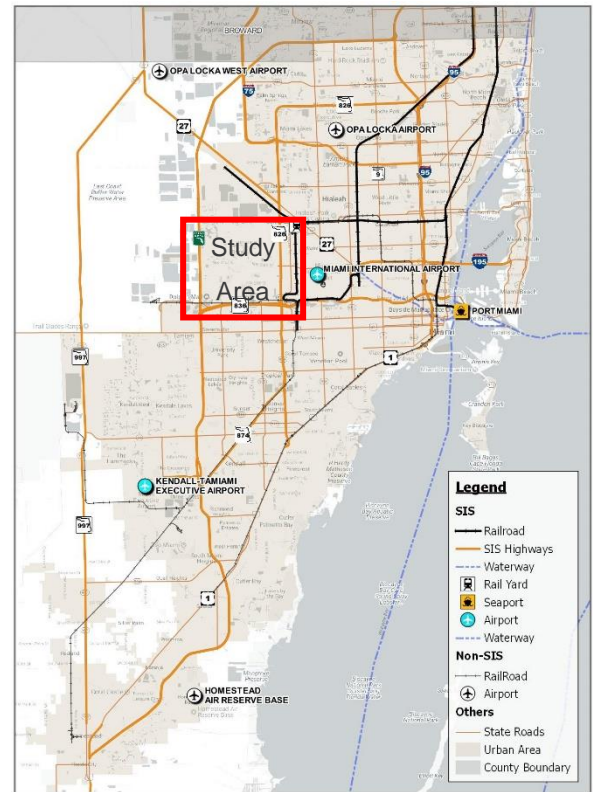
OVERVIEW

The Doral study area represents the largest concentration of industrial, warehousing and distribution center locations in the State of Florida with more than 65 million square feet of freight related uses. The area has outstanding access to regional, state and global markets as it is surrounded by FDOT Strategic Intermodal System (SIS) highways and railroads connecting to SIS Hubs including PORTMiami, Miami International Airport, the Miami River Waterway and the FEC and CSX rail yards. The area has a long history of growth and development of freight related uses and now faces growing challenges to maintain freight mobility including:

Traffic congestion in a highly congested, growing mixed use urban area. Traffic data collected for this study shows that East/West and North/South travel speeds during peak periods through the community are as slow as 10.8 and 6.1 miles per hour respectively indicating poor operating conditions.

Growth in freight and non-freight related uses. The freight industry continues to place greater demand on the transportation network due to the opening of the new locks at the Panama Canal, completion of major freight projects in the area including public and private investments at PORTMiami, the on-port FEC rail restoration, Flagler Railyard investments, SR 826/836 interchange improvements and most recently the NW 25th Street Viaduct. At the same time, the area has become increasingly attractive for residential, commercial and hotel/resort development.

Doral Subarea Freight Plan Study Area





RECOMMENDATIONS

The results of the analysis of future conditions is a list of Short- Fiscal Year (FY) 2019 to 2024, Mid- FY 2025 to 2030 and Long-Range FY 2031 to 2045 projects for implementation shown to the right. The projects are under multiple jurisdictions and implementation will require coordination with stakeholders including the private sector. This study was performed in the format of a Planning and Conceptual Engineering study with the intent of advancing projects to Project Development and Environment (PD&E) Analysis Reports. Six corridor projects were identified based on the need for a PD&E and under FDOT jurisdiction. The projects are shown on the opposing page.

INTERMODAL FREIGHT RECOMMENDATIONS

PORTMiami is studying locations for an Inland Terminal in Miami-Dade County. At the time of this study the port had identified 16 locations that are in proximity to regional roadway and rail connections. Several sites were in or near this study area and three were selected for the development of concepts based on the size of the property, appropriate land use designation and proximity to rail and highway access. It is recommended that FDOT coordinate with PORTMiami, and private stakeholders including the FEC and CSX railroads for further study.

INTERMODAL IMPROVEMENTS

Facility	Limits of Work	Total Acres	Roadway Access	Proximity to Rail
Site 1B Proposal	Intermodal Facility	975	NW 95th Ave. @ NW 95th St.	900' from FEC
Site 4 Proposal	Intermodal Facility / Transload Facility	2350	Potential Access to NW 74th St. Interchange at the HEFT and NW 106th St.	3,260' to FEC and 2.13 miles to CSX
Site 9 Proposal	Transload Facility	316	NW 114th St. and potential access to NW 106th St. HEFT Interchange	1,000' from FEC

FREIGHT CORRIDOR CANDIDATE	FROM	TO	RECOMMENDATION (Assumes Committed Projects)
Short Term FY 2019 to FY 2024			
NW 12th St	Intersection Improvements		NW 97th, 87th, 82nd Aves
NW 25th St	NW 87th Ave	MIA Cargo Area	Signal Timing Improvement (Draft*)
NW 33rd/34th St	Intersection Improvements		NW 117th, NW 112th, NW 107th Aves
NW 36th St	NW 7100 Block	NW 79th Ave	Signal Timing Improvement (Draft*)
NW 58th St	Intersection Improvements		NW 87th, NW 82nd Aves
NW 74th St	NW 74th Ave	SR 826	Signal Timing Improvement (Draft*)
US 27/Okeechobee Rd	W 8th Ave	NW 74th St	Signal Timing Improvement (Draft*)
NW 72nd Ave	Corporate Way	NW 25th St	Signal Timing Improvement (Draft*)
NW 72nd Ave	NW 74th St	NW 74th St Connector	Signal Timing Improvement (Draft*)
NW 117th Ave	NW 12th St	NW 41st St	+2 Lanes 4 Lane Divided
Mid Term FY 2025 to FY 2029			
NW 12th St	NW 127th Ave	HEFT	+2 Lanes 6 Lane Divided with TSM&O**
NW 25th St	NW 137th Ave	NW 127th Ave	New 2 Lane Divided Roadway
NW 25th St	NW 127th Ave	HEFT	+2 Lanes 6 Lane Divided with TSM&O**
NW 25th St	@NW 67th Ave		Intersection Modification (Draft)
NW 33rd St	NW 117th Ave	NW 107th Ave	+4 Lane New Construction and +2 Lanes to 4 & 6 Lane Divided
NW 36th St	Intersection Improvements		NW 79th, NW 72nd Aves, NW 7100 Block
NW 41st St	NW 127th Ave	HEFT	+2 Lanes 4 Lane Divided
NW 58th St	East of FL-826	NW 72nd Street	+1 Lane 6 Lane Divided with TSM&O**
NW 74th St	NW 87th Ave	FL-826	TSM&O**
NW 74th St	FL-826	Okeechobee Rd	+2 Lanes 8 Lane Divided with TSM&O**
NW 74th St	Intersection Improvements		NW 77th Ct, NW 72nd, NW 69th Aves
NW 90th St	NW 117th Ave	NW 87th Ave	+4 Lane New Construction and +2 Lanes to 4 Lane Divided
NW 137th Ave	NW 25th St	NW 41st St	New 2 Lane Divided
NW 127th Ave	NW 25th St	NW 41st St	New 4 Lane Divided
NW 122nd Ave	NW 12th St	NW 58th St	New 4 Lane Divided
NW 117th Ave	NW 41st St	NW 58th St	+2 Lanes 4 Lane Divided
NW 97th Ave	NW 12th St	NW 25th St	+2 Lanes 6 Lane Divided
Long Term FY 2030 to FY 2045			
SR 836	NW 137th Ave	NW 127th Ave	+2 Managed Use Lanes
SR 836	NW 127th Ave	HEFT	+2 Lanes
NW 12th St	HEFT	NW 79th Ave	+2 Lanes 6 Lane Divided with TSM&O**
NW 25th St	NW 117th Ave	NW 107th Ave	+2 Lanes or Viaduct
NW 25th St	FL-826	MIA Cargo Area	+ SB Left Intersection Study
NW 25th St	@NW 75th Ave		Intersection Modification (Draft*)
NW 25th Street Viaduct	NW 117th Ave	NW 82nd Ave	+Viaduct
NW 25th Street Viaduct	NW 72nd Ave	New Intermodal Center	+ Viaduct Ext
NW 36th St	Intersection Improvements		NW 79th Ave, 6th, 66th Aves & Perimeter Rd (Draft*)
NW 74th St	@NW 72nd Ave		Access Management (Draft*)
HEFT	SR 836	NW 106th St	AV/CV Technology***
NW 117th Ave	NW 58th St	NW 74th St	+2 Lanes 4 Lane Divided
NW 117th Ave w/Interchange Improvements at NW 74th Street	NW 74th St	NW 90th St	Interchange Reconstruction New Construction 4LD
NW 107th Ave	NW 90th St	NW 122th St	+2 Lanes 4 Lane Divided
NW 97th Ave	NW 12th St	NW 25th St	TSM&O**
NW 87th Ave	NW 12th St	NW 58th St	TSM&O**
NW 87th Ave	NW 58th St	NW 74th St	+2 Lanes 6 Lane Divided with TSM&O**
SR 826	SR 836	Okeechobee Rd	AV/CV Technology***
NW 72nd Ave	SR 836	NW 25th St	+2 Lanes 8 Lane Divided with TSM&O***
NW 72nd Ave	NW 25th St	Okeechobee Rd	TSM&O

* At the time of publishing this report the FDOT National Highway Systems (NHS) Intermodal Connectors Report a Draft
 ** Transportation Systems Management & Operations (TSM&O)
 *** Autonomous Vehicle/Connected Vehicle (AV/CV)

FDOT wishes to emphasize that this study is a planning level assessment designed to provide information on potential transportation projects to support freight related infrastructure. The intermodal analysis includes a review of properties that have been under review by Miami-Dade County that may have the potential for development as an Inland Terminal. Note that some of these properties are privately owned and all the proposals include extensions of privately operated Railroads connecting to those properties.

The proposals provided in this study are for informational purposes for the private sector, specifically land owners, railroad operators and potential developers of such facilities and to facilitate partnerships to advance the development of such facilities and services.





OUTREACH

In order to meet the challenges of this study, an extensive Public, Stakeholder and Intergovernmental Coordination effort was performed. Miami-Dade County and the Cities continue to seek out innovative methods for smart growth through multi-modal transportation and land use plans. As a result there is a significant list of projects planned for this study area by multiple stakeholders. FDOT used this study as an opportunity to reach out early in the process and coordinate with transportation planners, providers and users of the system to coordinate efforts. The Public, Stakeholders and local Governments were contacted and a Freight Summit was held at the City of Doral City Hall on June 8, 2017. The Summit brought together all interests for a day of information and discussion on how to move forward with a consensus plan to achieve freight and livability goals. The event resulted in a broader understanding of the FDOT Subarea Planning efforts and identified action items for local jurisdictions and FDOT to implement.



Doral Subarea Freight Mobility Summit June 8, 2017



NW 25th Street Viaduct provides direct access between MIA and Doral warehousing District



The first Post Panama Container ship unloads at PORTMiami in July, 2016



Both FEC and CSX rail lines service the Doral area industrial and warehousing complexes

“Freight has no borders.”

“We are a South Florida startup ... we came here because we saw huge opportunity and the perfect landscape.”

“Not just about new capacity it's about changing traffic patterns.”

“We need to support truck parking in Miami-Dade County.”

“All projects around the state need to be connected.”

“Constantly working to be out of Miami-Dade County by 3:00 PM” [to beat the traffic]

“We need to support a potential Miami-Dade Inland Terminal.”

“South Florida is the door to Latin America.”

“Success [in Miami-Dade] mirrors what happens in the State.”

“Safe and Secure Trucking is a major concern.”

Comments provided by stakeholders and the community

