

District Five Truck Parking Study



Technical Report #3:
Inventory of Existing Facilities
January 2018

Contents

Existing Truck Parking Inventory	2
Overview of Commercial Truck Parking Locations	2
Commercial Truck Parking Facility Profiles	5
Public Locations	5
Private Locations	23

Tables

Table 3-1 Truck Parking Location Summary by County, FDOT District Five	4
Table 3-2 Designated Public Truck Parking Locations, FDOT District Five	5
Table 3-3 Private Truck Parking Locations, FDOT District Five	23

Figures

Figure 3-1 Designated Truck Parking Locations, FDOT District Five	3
---	---

DRAFT

Existing Truck Parking Inventory

The following section provides an overview of commercial truck parking facility locations and an inventory of the number of public and private truck parking spaces. The study area includes Orange, Osceola, Seminole, Lake, Sumter, Marion, Flagler, Brevard, and Volusia Counties. The inventory utilized the Jason's Law Truck Parking Survey database which was developed by the Federal Highway Administration (FHWA) in 2015 with the purpose of providing adequate truck parking facilities and spaces to comply with the federal Hours of Service (HOS) Regulations. The Jason's Law Survey database served as the primary source for public and private locations while additional research was conducted to supplement the existing dataset. Online databases such as Trucker's Friends, Truck Smart Parking Services, and Diesel Boss were reviewed and cross-referenced against the Jason's Law Survey locations. This research provided additional detail and refinement relating to the previously recognized sites while also identifying locations and attributes not captured as part of the 2015 survey. In some cases, aerial maps were used to identify truck parking space capacity and private locations were contacted directly to identify and verify facility amenities.

Overview of Commercial Truck Parking Locations

The availability of adequate parking is important for commercial vehicle operators to obtain the required rest needed to operate their vehicles safely. In Florida, truck parking is supplied by public transportation agencies and privately owned/operated truck parking facilities along major interstates and off the highway system, respectively. According to the Jason's Law Survey, most of the available truck parking is provided by privately owned facilities. The survey estimates there are more than 300,000 truck parking spaces in the U.S., with more than 90 percent (272,000) of those at private truck stops.

Public Truck Parking

Commercial vehicle operators take advantage of parking legally at available publicly provided spaces. These locations typically include Rest Areas, Service Plazas and Truck Comfort Stations (WIM) operated by the Florida Department of Transportation (FDOT). Public truck parking is available to commercial vehicle operators 24 hours a day, seven days a week along major interstate roads including Florida's Turnpike, I-95, I-75 and I-4.

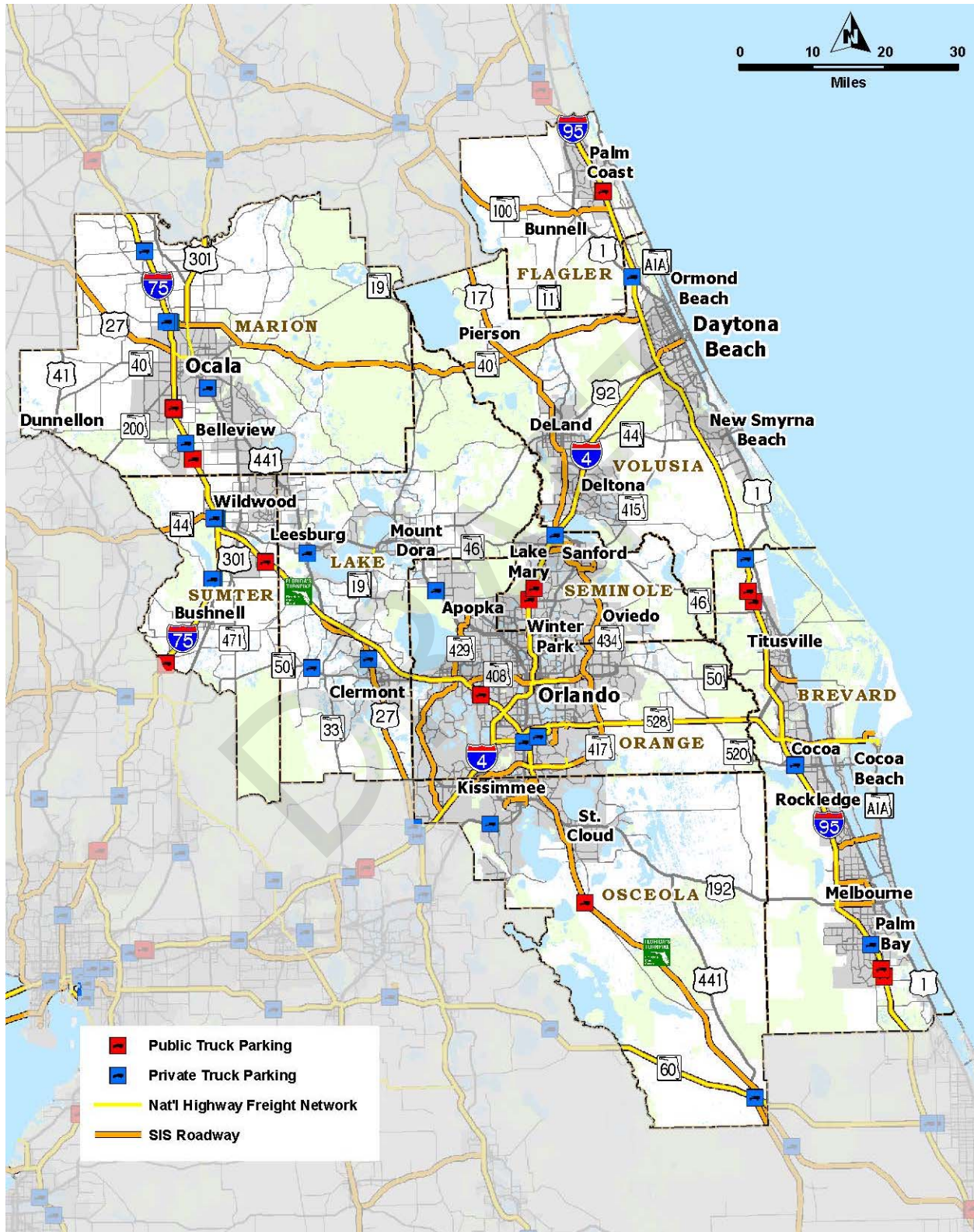
Private Truck Parking

Commercial vehicle operators park both legally and unofficially on privately owned land. Official truck parking stops in Florida include Love's, Travel Centers of America and Pilot Flying J Travel Centers. Alternative private truck stop options for commercial vehicle operators are truck fueling locations such as Citgo. These gas/fuel stations offer either a private lot for trucks to park or available empty space behind their facility which can typically accommodate two to three trucks at a time. Private truck stops are generally located off of major interstate roads near the entrance/exit ramps.

District Five Truck Parking Study

Inventory of Existing Facilities

Figure 3-1 | Designated Truck Parking Locations, FDOT District Five



Source: FDOT / FHWA, Jason's Law Survey, 2015

District Five Truck Parking Study

Inventory of Existing Facilities

Table 3-1 | Truck Parking Location Summary by County, FDOT District Five

Location Type	County	Number of Locations	Truck Parking Spaces
Privately Operated Locations	Brevard County	4	39
	Lake County	8	373
	Marion County	6	593
	Orange County	3	154
	Osceola County	2	17
	Seminole County	1	3
	Sumter County	1	2
	Volusia County	1	107
	Private Location Subtotal	26	1,288
Public Locations	Brevard County	4	196
	Flagler County	2	82
	Marion County	4	143
	Orange County	1	24
	Osceola County	1	35
	Seminole County	2	33
	Sumter County	3	139
	Public Location Subtotal	17	652

Source: FDOT / FHWA, Jason's Law Survey, 2015

District Five Truck Parking Study

Inventory of Existing Facilities

Commercial Truck Parking Facility Profiles

This subsection outlines and profiles designated public and privately operated commercial truck parking facilities throughout District Five. For each designated commercial truck parking facility, information will be presented pertaining to area location, adjacent and connecting roadway characteristics, facility capacity, and identified on-site amenities.

Public Locations

Within the nine counties of District Five there are 2,084 total public parking spaces; including **17 public truck parking locations with 652 truck parking spaces**. Amenities at these facilities range from large public restrooms to nighttime security.

Table 3-2 | Designated Public Truck Parking Locations, FDOT District Five

Location Name	Mile Marker	County	Truck Parking Spaces
I-95 Northbound Rest Area	168	Brevard	60
I-95 Southbound Rest Area	169	Brevard	67
I-95 Northbound Rest Area	225	Brevard	34
I-95 Southbound Rest Area	227	Brevard	35
I-95 Southbound Truck Comfort Station (WIM)	286	Flagler	41
I-95 Northbound Truck Comfort Station (WIM)	286	Flagler	41
I-75 Northbound Truck Comfort Station (WIM)	338	Marion	29
I-75 Southbound Truck Comfort Station (WIM)	338	Marion	28
I-75 Northbound Rest Area	346	Marion	43
I-75 Southbound Rest Area	346	Marion	43
Turkey Lake Service Plaza	263	Orange	24
Canoe Creek Service Plaza	229	Osceola	35
I-4 Westbound Rest Area	94	Seminole	16
I-4 Eastbound Rest Area	96	Seminole	17
I-75 Northbound Rest Area	307	Sumter	44
I-75 Southbound Rest Area	307	Sumter	33
Okahumpka Service Plaza	299	Sumter	62

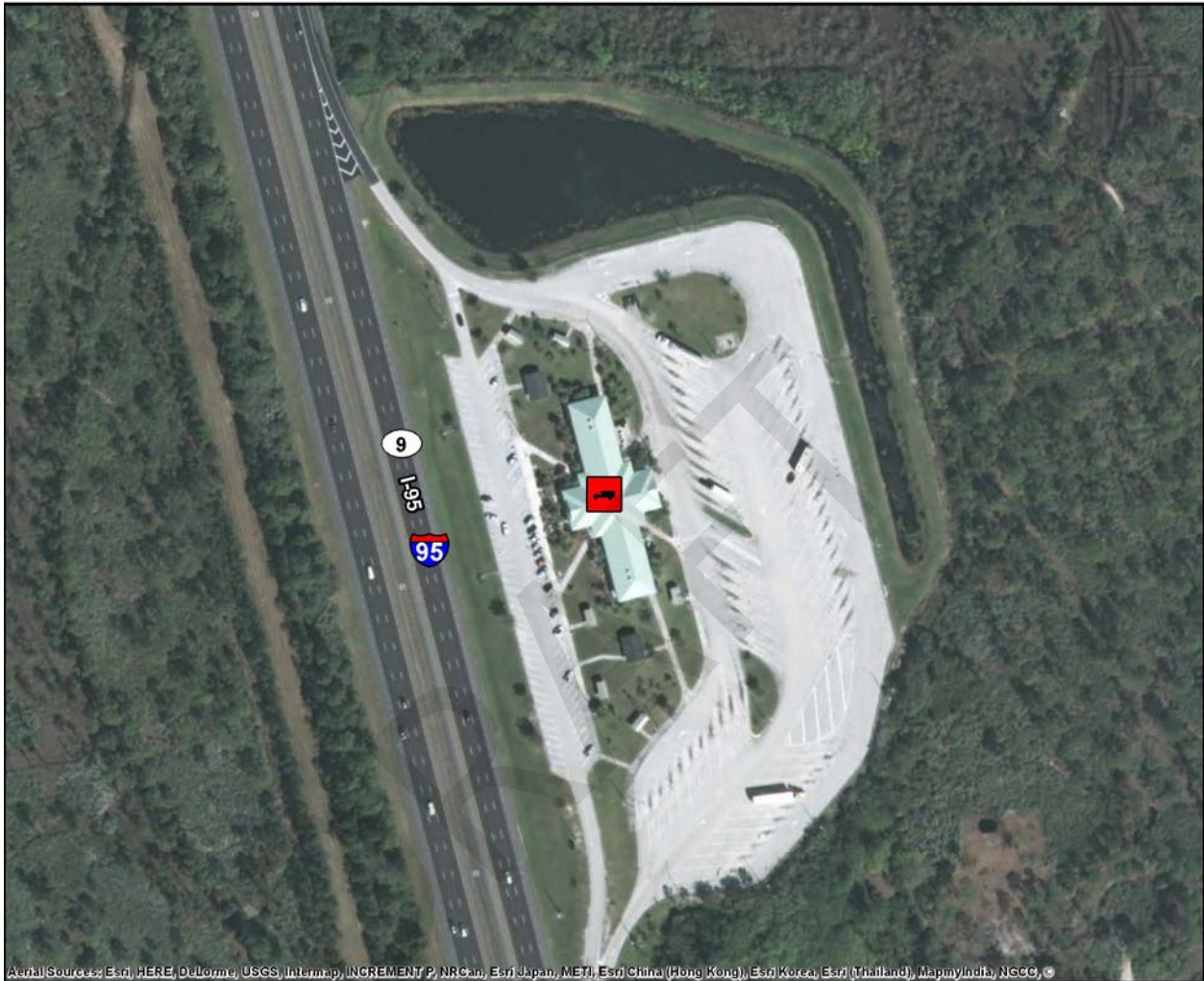
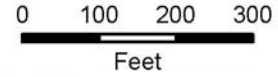
Source: FDOT / FHWA, Jason's Law Survey, 2015

District Five Truck Parking Study

Inventory of Existing Facilities

I-95 Northbound Rest Area

4.6 Miles South of SR 514



Aerial Sources: Esri, HERE, DeLorme, USGS, Intermap, INCREMENT P, NRCan, Esri Japan, METI, Esri China (Hong Kong), Esri Korea, Esri (Thailand), MapmyIndia, NGCC, ©

County	Brevard
Area	Palm Bay West
Location Type	Public
Route	I-95 NB
Facility Type	Rest Area
Hours of Operation	24 hours per day
Truck Parking Spaces	60
Amenities	Restrooms, Handicap Facilities, Nighttime Security, Pet Walk Area, Picnic Tables, Vending Machines, Overnight Parking



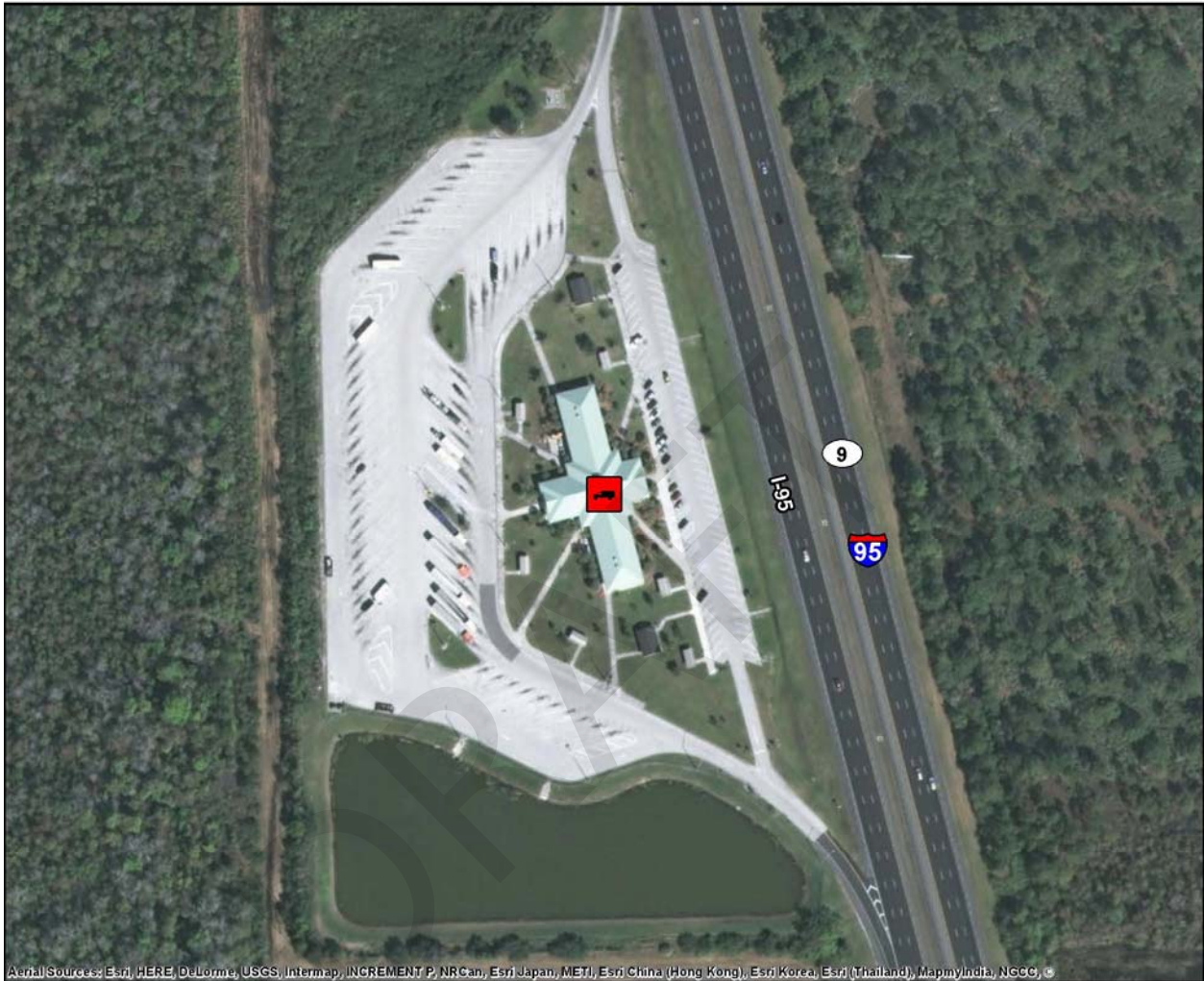
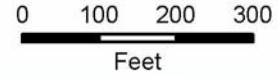
Online Map Link: <http://maps.google.com/maps?q=27.9338241259843,-80.6037057215979>

District Five Truck Parking Study

Inventory of Existing Facilities

I-95 Southbound Rest Area

3.6 Miles South of SR 514



Aerial Sources: Esri, HERE, DeLorme, USGS, Intermap, INCREMENT P, NRCan, Esri Japan, METI, Esri China (Hong Kong), Esri Korea, Esri (Thailand), MapmyIndia, NGCC, ©

County	Brevard
Area	Grant Valkaria
Location Type	Public
Route	I-95 SB
Facility Type	Rest Area
Hours of Operation	24 hours per day
Truck Parking Spaces	67
Amenities	Restrooms, Handicap Facilities, Nighttime Security, Pet Walk Area, Picnic Tables, Vending Machines, Overnight Parking



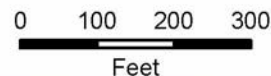
Online Map Link: <http://maps.google.com/maps?q=27.9479796448442,-80.6091822270028>

District Five Truck Parking Study

Inventory of Existing Facilities

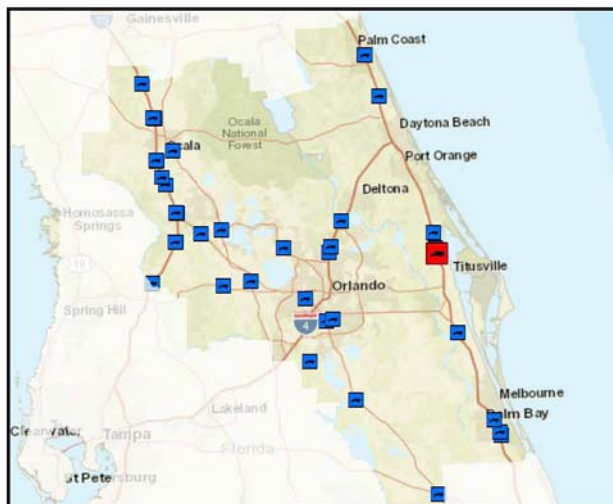
I-95 Northbound Rest Area

1.5 Miles North of SR 46



Aerial Sources: Esri, HERE, DeLorme, USGS, Intermap, INCREMENT P, NRCan, Esri Japan, METI, Esri China (Hong Kong), Esri Korea, Esri (Thailand), MapmyIndia, NGCC, ©

County	Brevard
Area	Mims
Location Type	Public
Route	I-95 NB
Facility Type	Rest Area
Hours of Operation	24 hours per day
Truck Parking Spaces	34
Amenities	Restrooms, Handicap Facilities, Nighttime Security, Pet Walk Area, Picnic Tables, Vending Machines, Overnight Parking



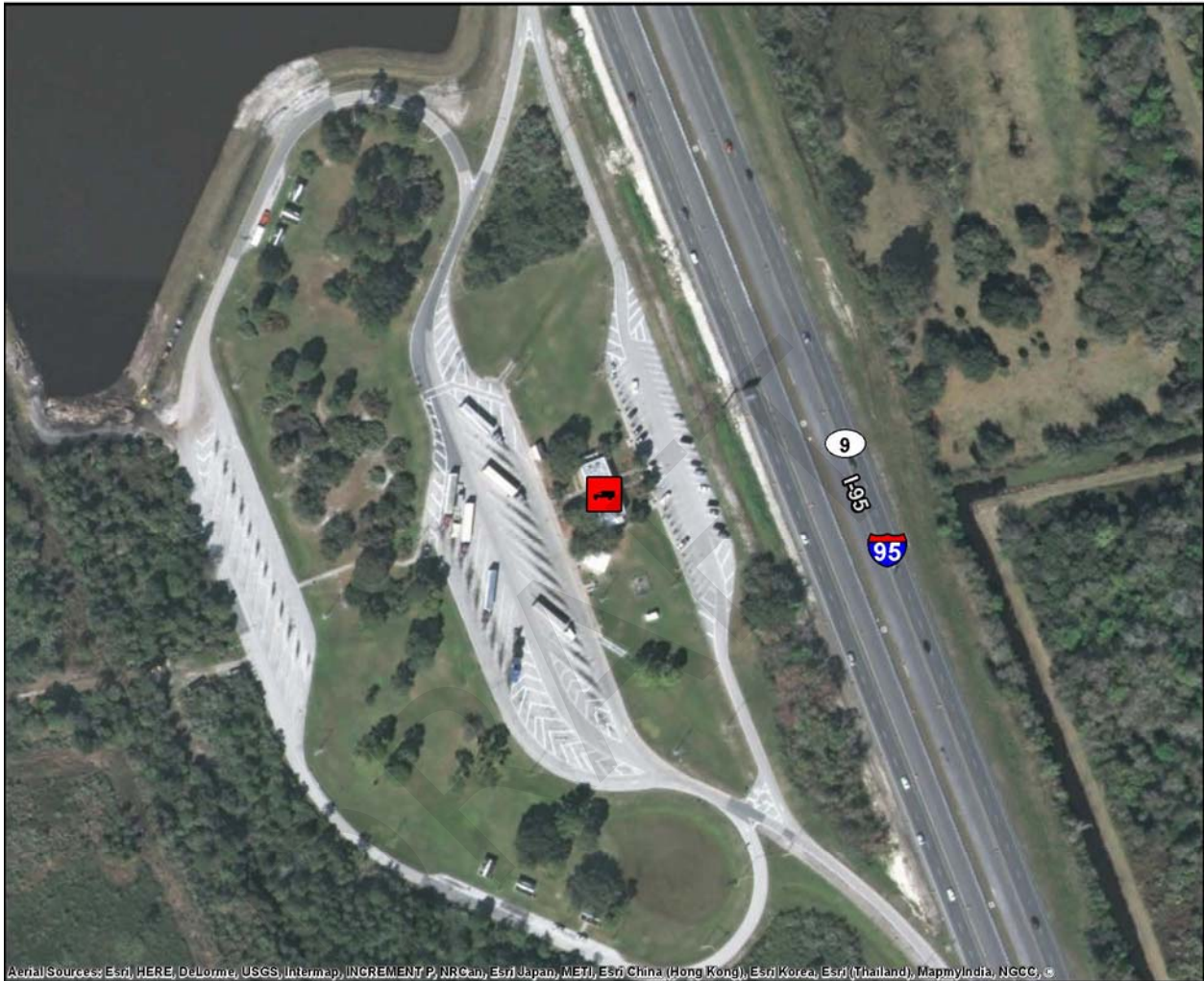
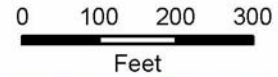
Online Map Link: <http://maps.google.com/maps?q=28.6868827703261,-80.8772647463055>

District Five Truck Parking Study

Inventory of Existing Facilities

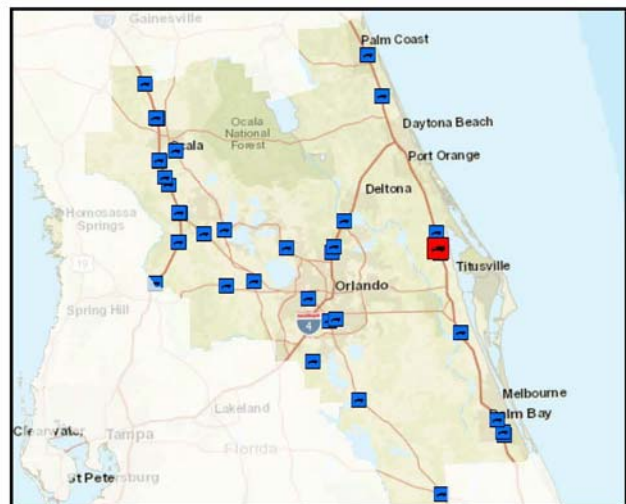
I-95 Southbound Rest Area

2.9 Miles North of SR 46



Aerial Sources: Esri, HERE, DeLorme, USGS, Intermap, INCREMENT P, NRCan, Esri Japan, METI, Esri China (Hong Kong), Esri Korea, Esri (Thailand), MapmyIndia, NGCC, ©

County	Brevard
Area	Mims
Location Type	Public
Route	I-95 SB
Facility Type	Rest Area
Hours of Operation	24 hours per day
Truck Parking Spaces	35
Amenities	Restrooms, Handicap Facilities, Nighttime Security, Pet Walk Area, Picnic Tables, Vending Machines, Overnight Parking



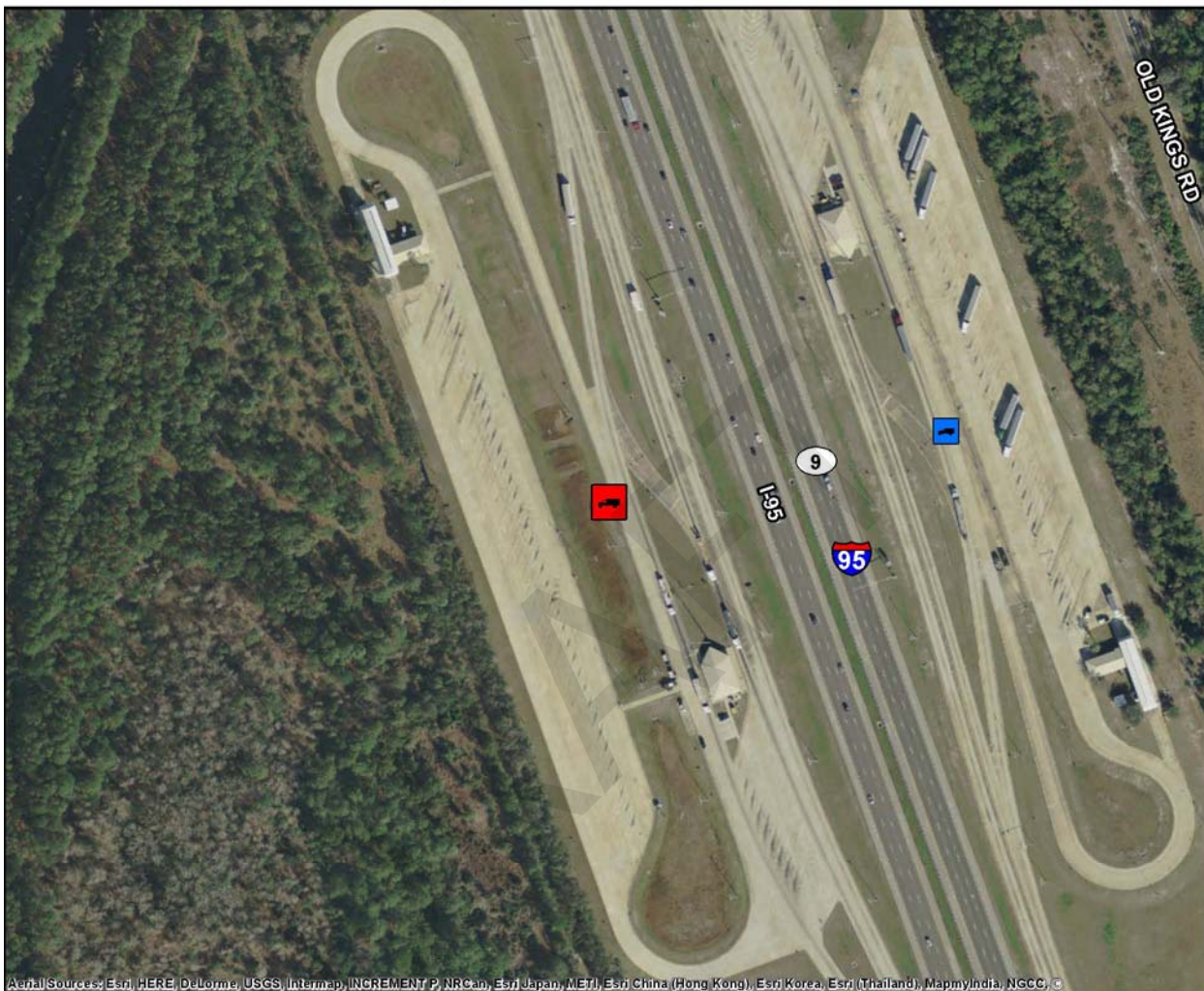
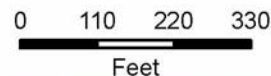
Online Map Link: <http://maps.google.com/maps?q=28.7085433269347,-80.8880522056961>

District Five Truck Parking Study

Inventory of Existing Facilities

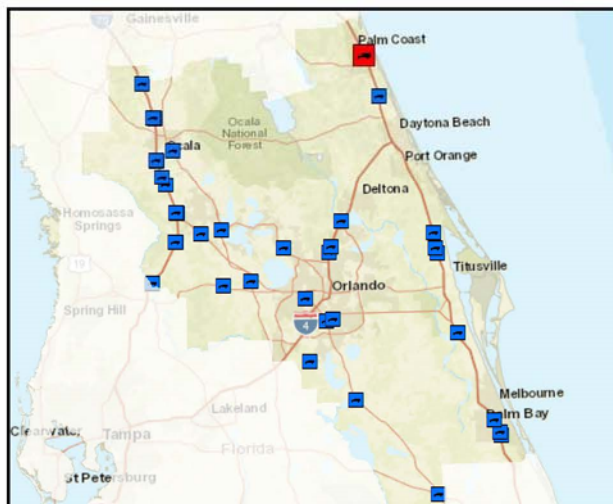
I-95 Southbound Truck Comfort Station (WIM)

3.3 Miles South of Palm Coast Parkway



Aerial Sources: Esri, HERE, DeLorme, USGS, Intermap, INCREMENT P, NRCan, Esri Japan, METI, Esri China (Hong Kong), Esri Korea, Esri (Thailand), MapmyIndia, NGCC, ©

County	Flagler
Area	Palm Coast
Location Type	Public
Route	I-95 SB
Facility Type	Truck Comfort Station (WIM)
Hours of Operation	24 hours per day
Truck Parking Spaces	41
Amenities	Parking Area, Scales, Overnight Parking



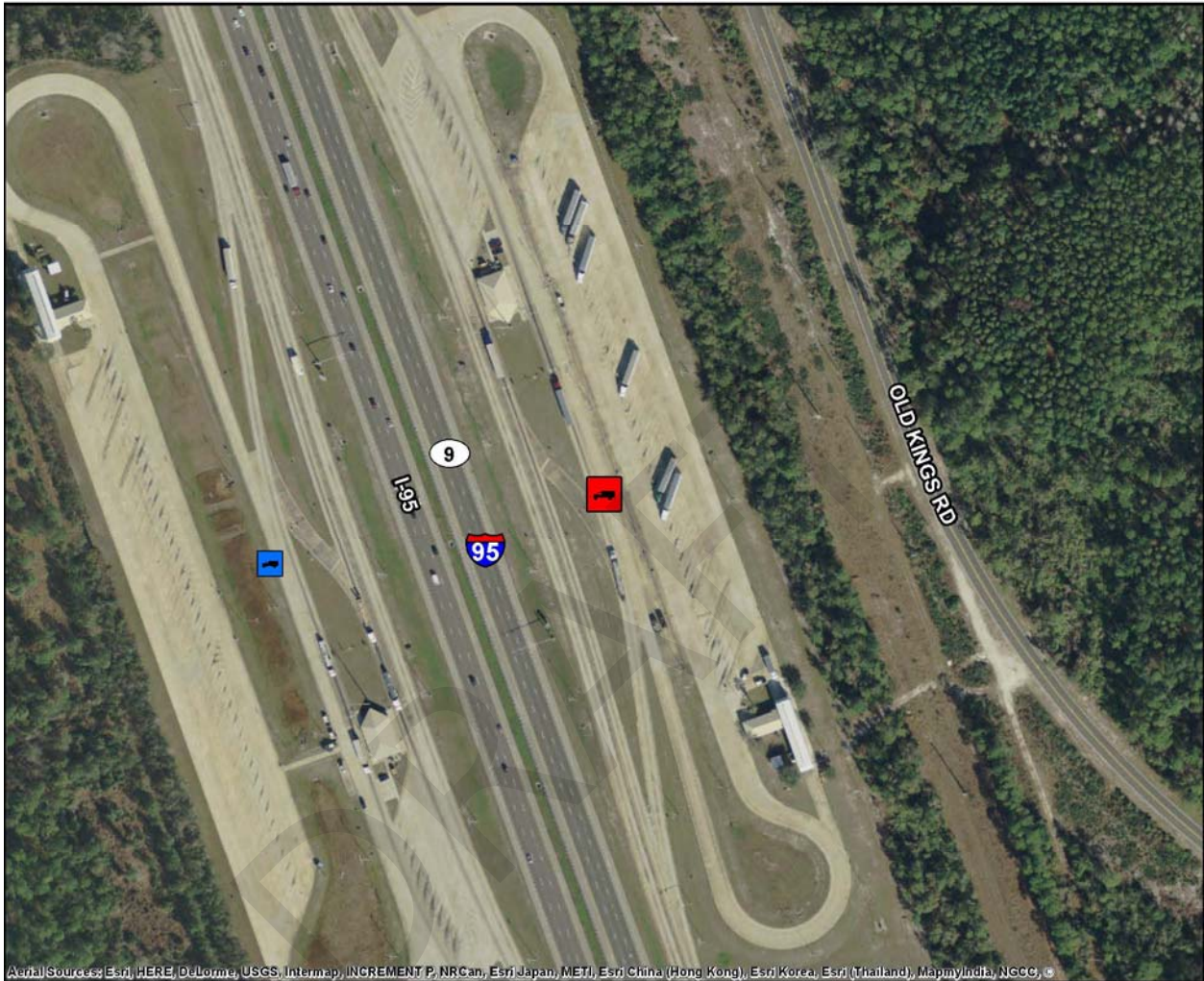
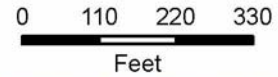
Online Map Link: <http://maps.google.com/maps?q=29.5106611070523,-81.197904627723>

District Five Truck Parking Study

Inventory of Existing Facilities

I-95 Northbound Truck Comfort Station (WIM)

2.5 Miles North of SR 100



Aerial Sources: Esri, HERE, DeLorme, USGS, Intermap, INCREMENT P, NRCan, Esri Japan, METI, Esri China (Hong Kong), Esri Korea, Esri (Thailand), MapmyIndia, NGCC, ©

County	Flagler
Area	Palm Coast
Location Type	Public
Route	I-95 NB
Facility Type	Truck Comfort Station (WIM)
Hours of Operation	24 hours per day
Truck Parking Spaces	41
Amenities	Parking Area, Scales, Overnight Parking



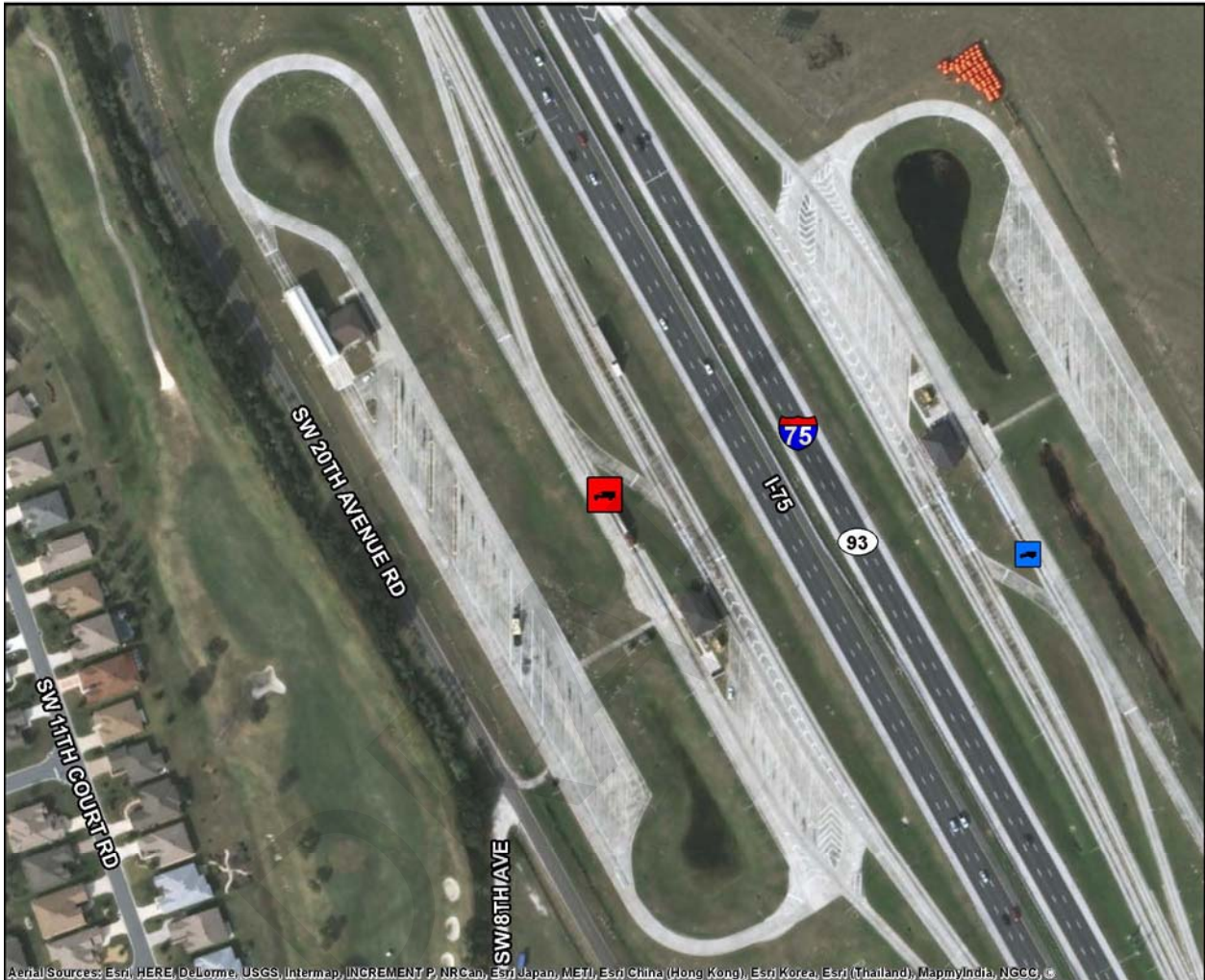
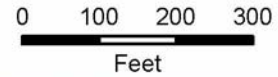
Online Map Link: <http://maps.google.com/maps?q=29.5109177199957,-81.1963303440088>

District Five Truck Parking Study

Inventory of Existing Facilities

I-75 Northbound Truck Comfort Station (WIM)

10 Miles North of SR 44



Aerial Sources: Esri, HERE, DeLorme, USGS, Intermap, INCREMENT P, NRCan, Esri Japan, METI, Esri China (Hong Kong), Esri Korea, Esri (Thailand), MapnyIndia, NGCC, C

County	Marion
Area	Wildwood
Location Type	Public
Route	I-75 NB
Facility Type	Truck Comfort Station (WIM)
Hours of Operation	24 hours per day
Truck Parking Spaces	29
Amenities	Parking Area, Scales, Overnight Parking



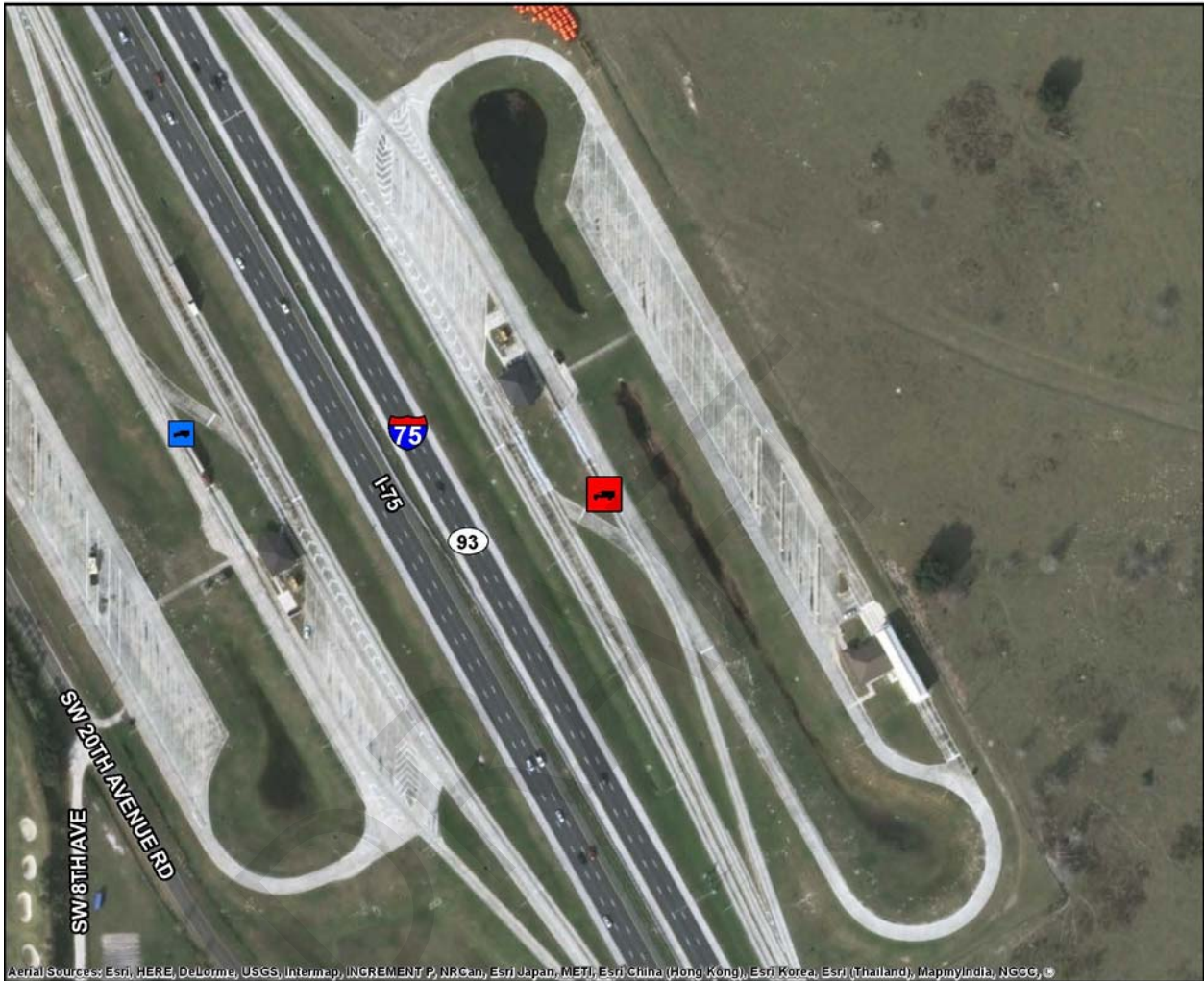
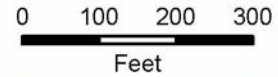
Online Map Link: <http://maps.google.com/maps?q=28.9933413792501,-82.1442955166878>

District Five Truck Parking Study

Inventory of Existing Facilities

I-75 Southbound Truck Comfort Station (WIM)

2 Miles South of CR 484



Aerial Sources: Esri, HERE, DeLorme, USGS, Intermap, INCREMENT P, NRCan, Esri Japan, METI, Esri China (Hong Kong), Esri Korea, Esri (Thailand), MapmyIndia, NGCC, ©

County	Marion
Area	Wildwood
Location Type	Public
Route	I-75 SB
Facility Type	Truck Comfort Station (WIM)
Hours of Operation	24 hours per day
Truck Parking Spaces	28
Amenities	Parking Area, Scales, Overnight Parking



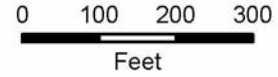
Online Map Link: <http://maps.google.com/maps?q=28.9930941356116,-82.1425050783641>

District Five Truck Parking Study

Inventory of Existing Facilities

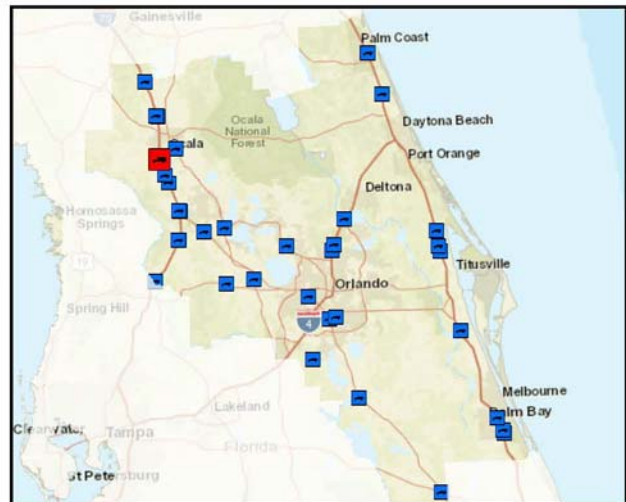
I-75 Northbound Rest Area

4 Miles North of SR 484



Aerial Sources: Esri, HERE, DeLorme, USGS, Intermap, INCREMENT P, NRCan, Esri Japan, METI, Esri China (Hong Kong), Esri Korea, Esri (Thailand), MapmyIndia, NGCC, ©

County	Marion
Area	Ocala
Location Type	Public
Route	I-75 NB
Facility Type	Rest Area
Hours of Operation	24 hours per day
Truck Parking Spaces	43
Amenities	Restrooms, Handicap Facilities, Nighttime Security, Pet Walk Area, Picnic Tables, Vending Machines, Overnight Parking



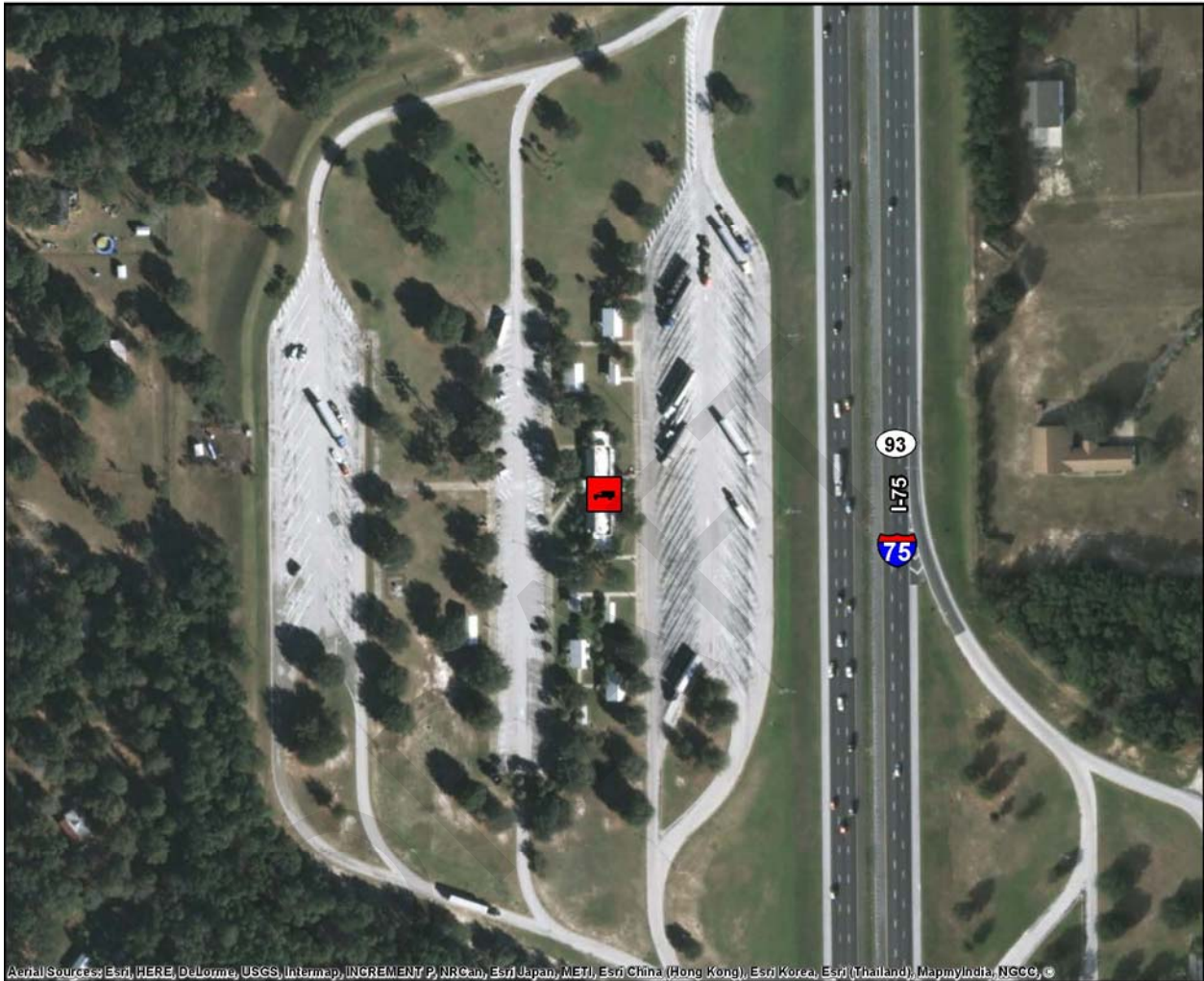
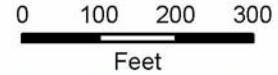
Online Map Link: <http://maps.google.com/maps?q=29.0929667557997,-82.1838002826837>

District Five Truck Parking Study

Inventory of Existing Facilities

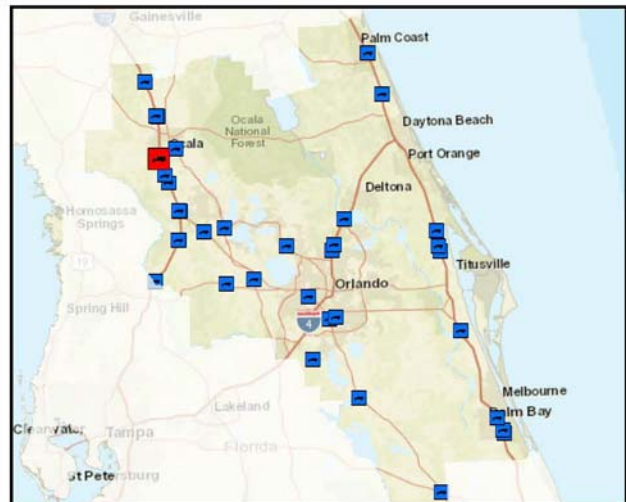
I-75 Southbound Rest Area

3 Miles South of SR 200



Aerial Sources: Esri, HERE, DeLorme, USGS, Intermap, INCREMENT P, NRCan, Esri Japan, METI, Esri China (Hong Kong), Esri Korea, Esri (Thailand), MapmyIndia, NGCC, ©

County	Marion
Area	Ocala
Location Type	Public
Route	I-75 SB
Facility Type	Rest Area
Hours of Operation	24 hours per day
Truck Parking Spaces	43
Amenities	Restrooms, Handicap Facilities, Nighttime Security, Pet Walk Area, Picnic Tables, Vending Machines, Overnight Parking



Online Map Link: <http://maps.google.com/maps?q=29.0958097899551,-82.1860940537529>

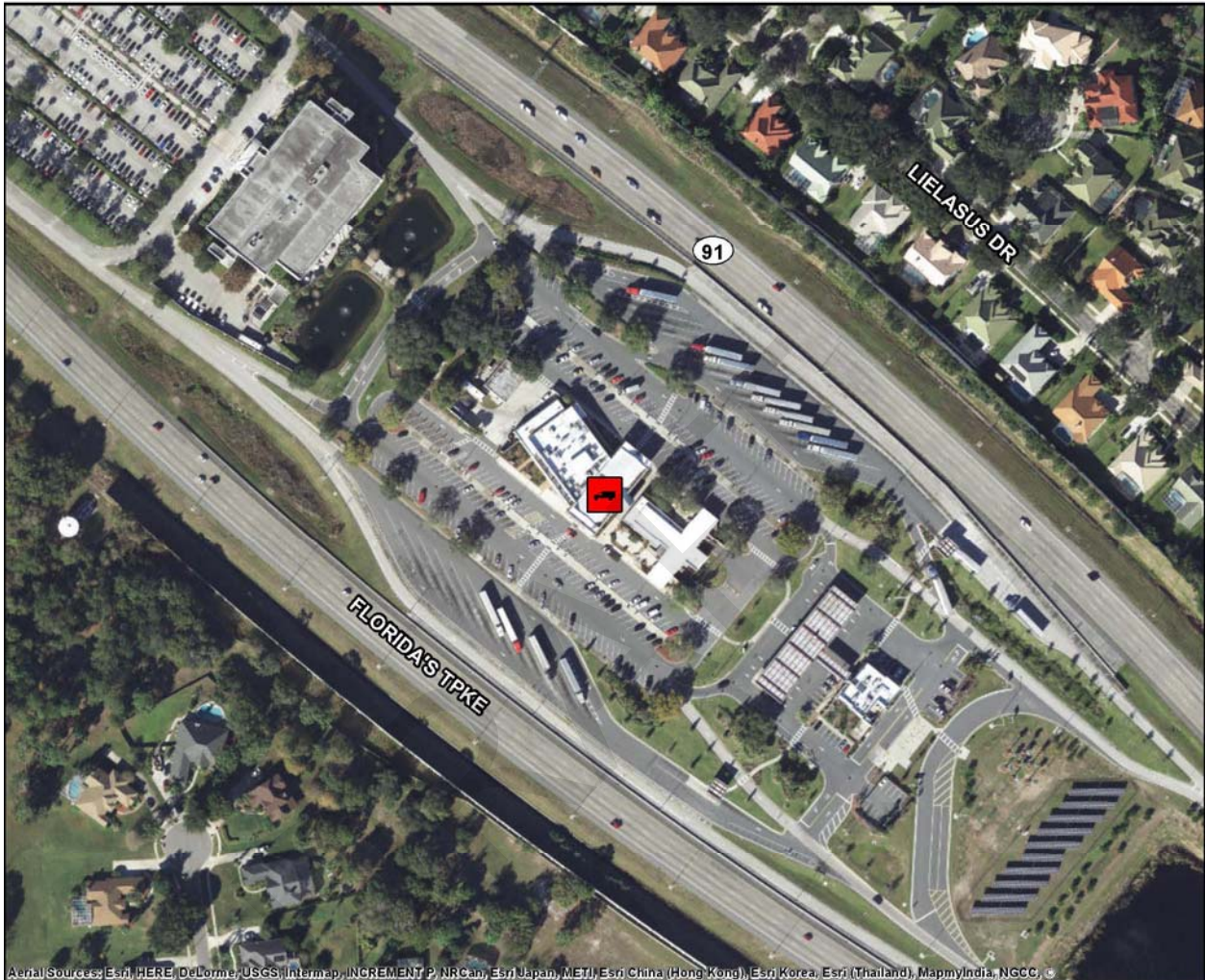
District Five Truck Parking Study

Inventory of Existing Facilities

Turkey Lake Service Plaza

263 Florida's Turnpike, Orlando, FL, 32835

0 110 220 330
Feet



Aerial Sources: Esri, HERE, DeLorme, USGS, Intermap, INCREMENT P, NRCan, Esri Japan, METI, Esri China (Hong Kong), Esri Korea, Esri (Thailand), MapmyIndia, NGCC, C

County	Orange
Area	Orlando
Location Type	Public
Route	Florida's Turnpike (SR 91)
Facility Type	Service Plaza
Hours of Operation	24 hours per day
Truck Parking Spaces	24
Amenities	Restrooms, Convenience Store, Paved Parking, Fuel Pumps, Restaurants, Nighttime Security, Overnight Parking



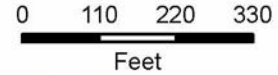
Online Map Link: <http://maps.google.com/maps?q=28.5145954193321,-81.4993760870466>

District Five Truck Parking Study

Inventory of Existing Facilities

Canoe Creek Service Plaza

Florida's Turnpike Mile Post 229, St. Cloud, FL, 34769



Aerial Sources: Esri, HERE, DeLorme, USGS, Intermap, INCREMENT P, NRCan, Esri Japan, METI, Esri China (Hong Kong), Esri Korea, Esri (Thailand), MapmyIndia, NGCC, ©

County	Osceola
Area	St. Cloud
Location Type	Public
Route	Florida's Turnpike (SR 91)
Facility Type	Service Plaza
Hours of Operation	24 hours per day
Truck Parking Spaces	35
Amenities	Restrooms, Convenience Store, Paved Parking, Fuel Pumps, Restaurants, Nighttime Security, Overnight Parking



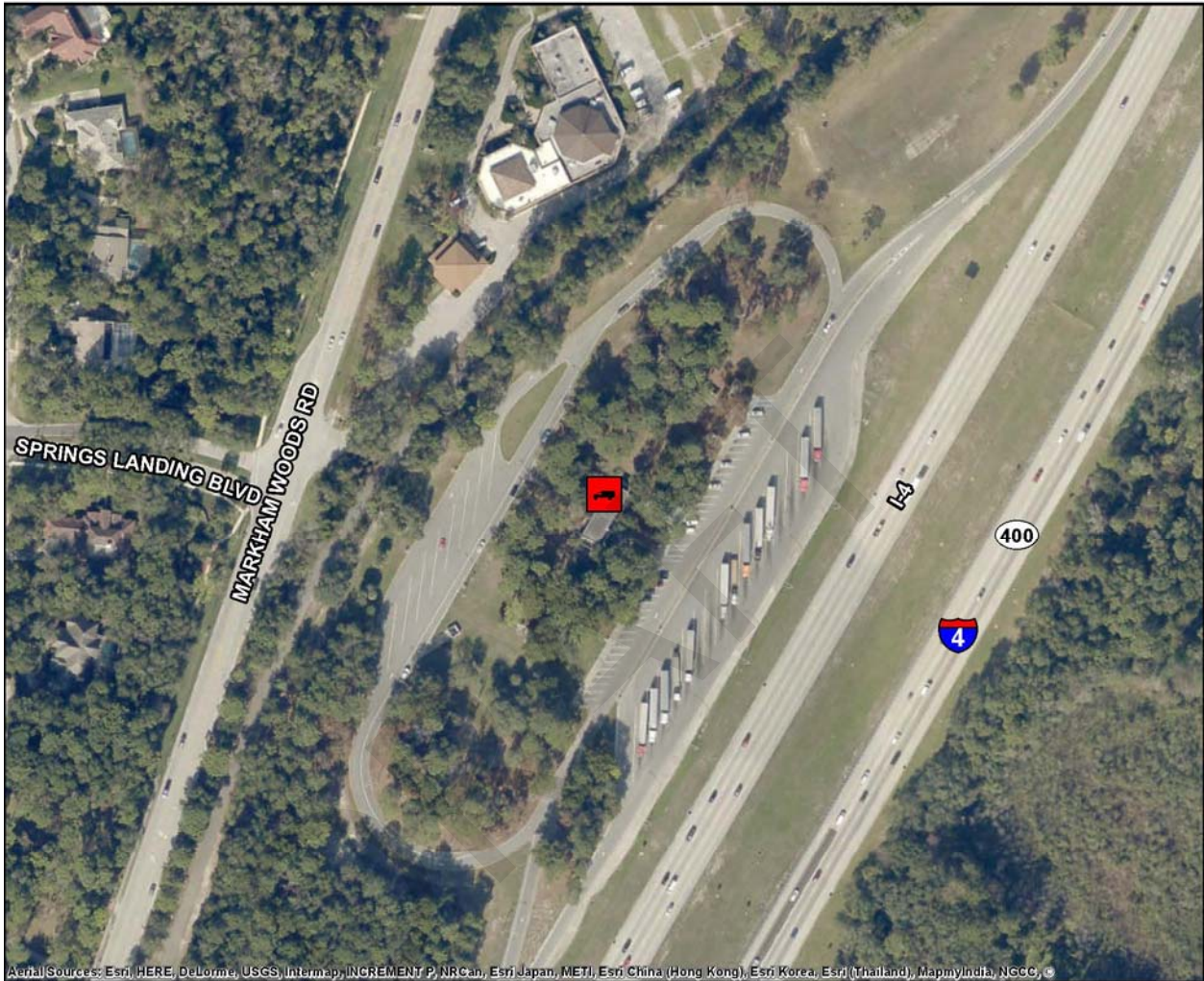
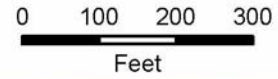
Online Map Link: <http://maps.google.com/maps?q=28.0945049190067,-81.2740377027952>

District Five Truck Parking Study

Inventory of Existing Facilities

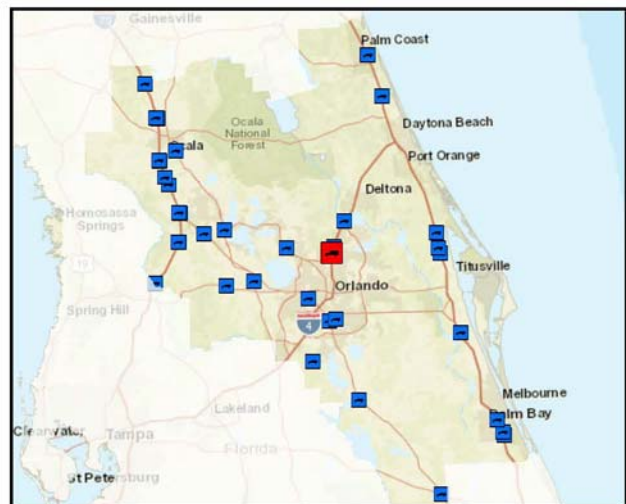
I-4 Westbound Rest Area

3.5 Miles West of Lake Mary Blvd



Aerial Sources: Esri, HERE, DeLorme, USGS, Intermap, INCREMENT P, NRCan, Esri Japan, METI, Esri China (Hong Kong), Esri Korea, Esri (Thailand), MapmyIndia, NGCC, ©

County	Seminole
Area	Wekiva Springs
Location Type	Public
Route	I-4 WB
Facility Type	Rest Area
Hours of Operation	24 hours per day
Truck Parking Spaces	16
Amenities	Restrooms, Handicap Facilities, Nighttime Security, Pet Walk Area, Picnic Tables, Vending Machines, Overnight Parking



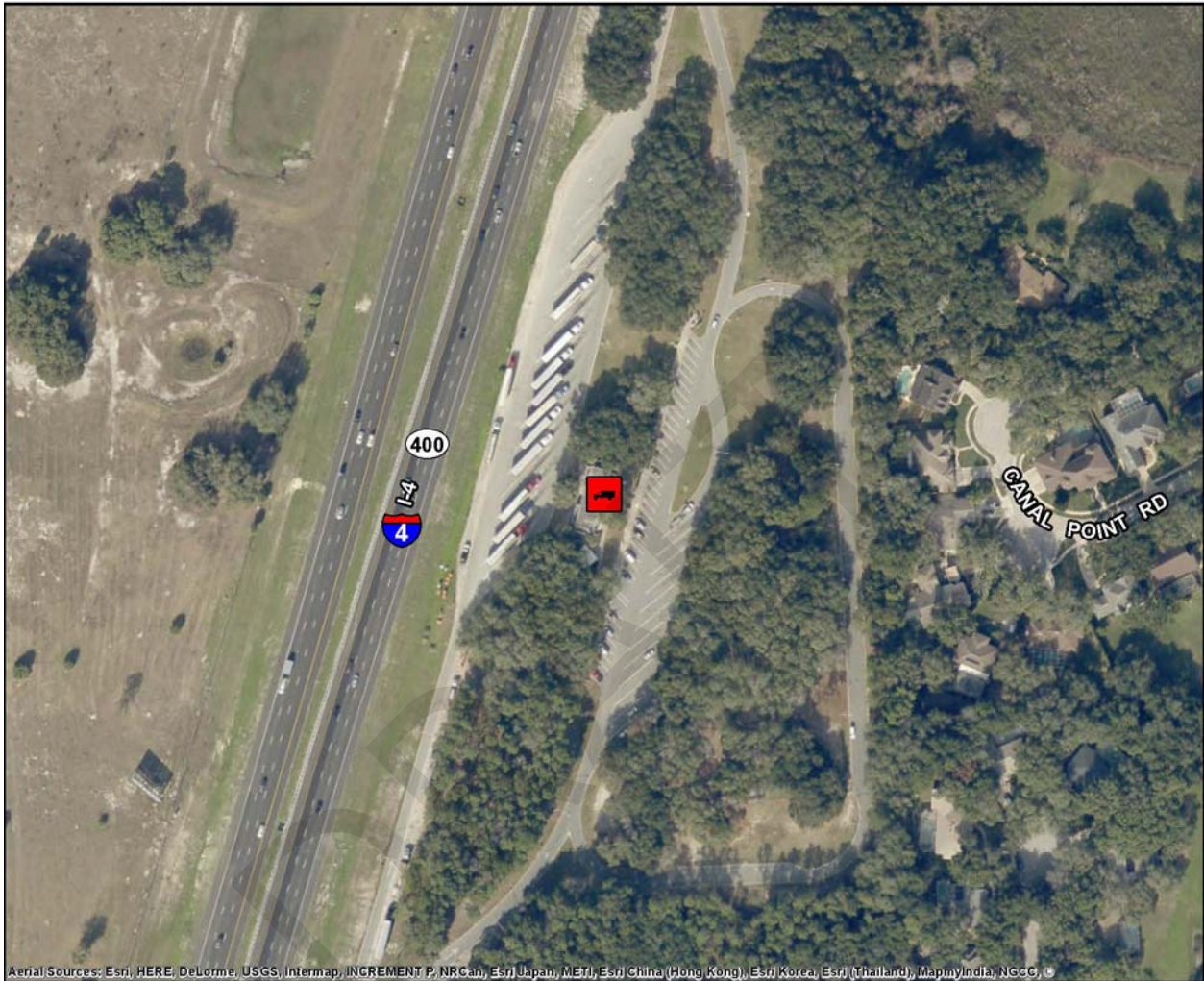
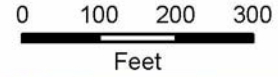
Online Map Link: <http://maps.google.com/maps?q=28.7018947064765,-81.3848971621712>

District Five Truck Parking Study

Inventory of Existing Facilities

I-4 Eastbound Rest Area

2.5 Miles East of SR 434



Aerial Sources: Esri, HERE, DeLorme, USGS, Intermap, INCREMENT P, NRCan, Esri Japan, METI, Esri China (Hong Kong), Esri Korea, Esri (Thailand), MapmyIndia, NGCC, ©

County	Seminole
Area	Sanlando Springs
Location Type	Public
Route	I-4 EB
Facility Type	Rest Area
Hours of Operation	24 hours per day
Truck Parking Spaces	17
Amenities	Restrooms, Handicap Facilities, Nighttime Security, Pet Walk Area, Picnic Tables, Vending Machines, Overnight Parking



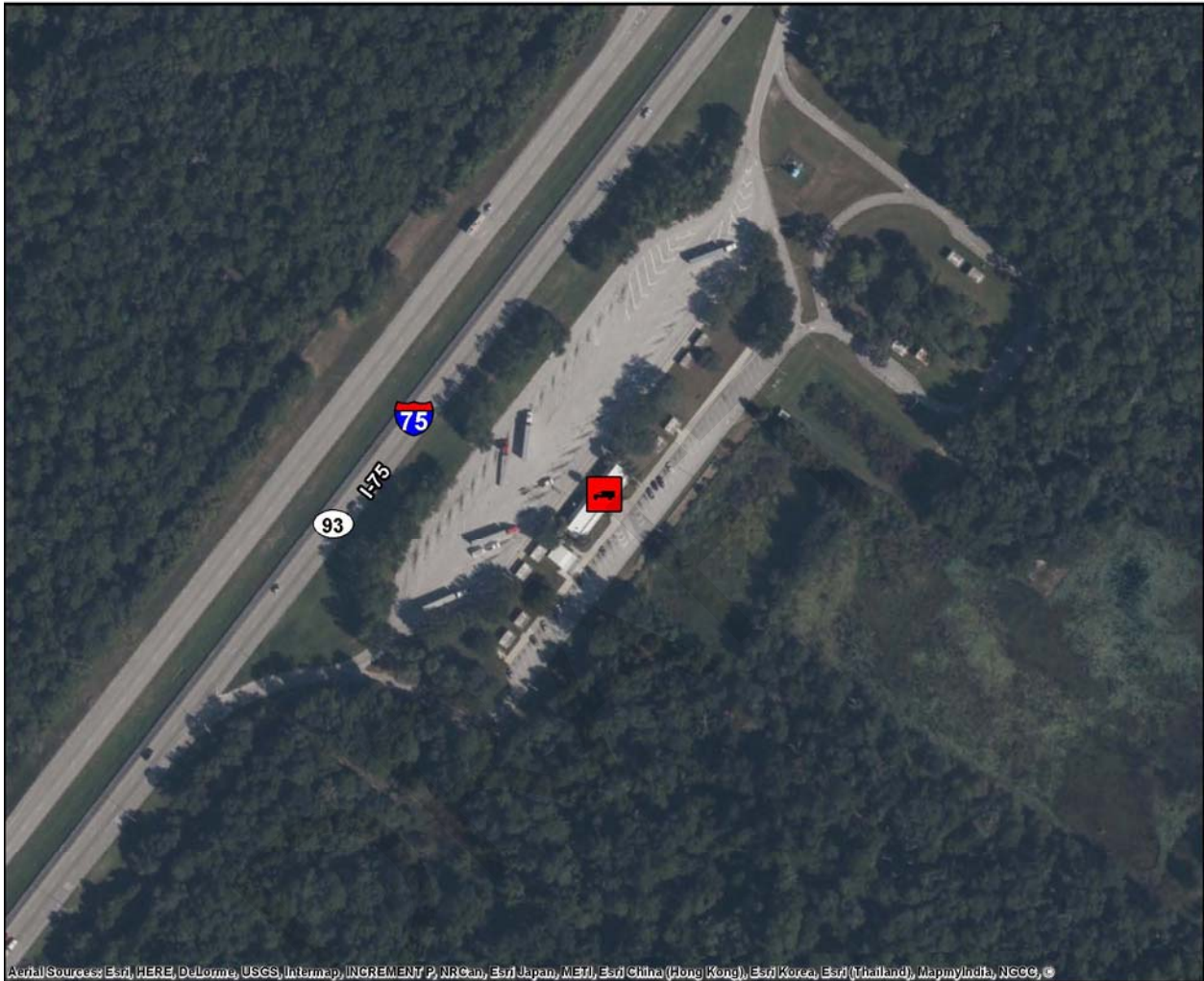
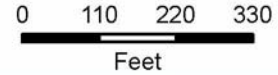
Online Map Link: <http://maps.google.com/maps?q=28.7247215363947,-81.3735280565997>

District Five Truck Parking Study

Inventory of Existing Facilities

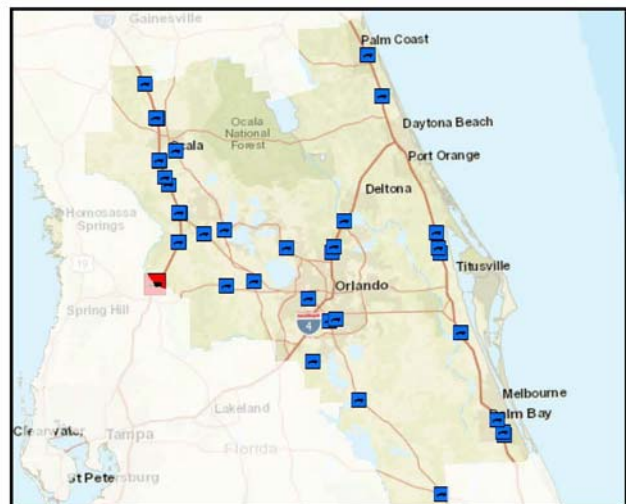
I-75 Northbound Rest Area

6 Miles North of SR 50/US 98



Aerial Sources: Esri, HERE, DeLorme, USGS, Intermap, INCREMENT P, NRCan, Esri Japan, METI, Esri China (Hong Kong), Esri Korea, Esri (Thailand), MapmyIndia, NGCC, ©

County	Sumter
Area	Ridge Manor Est
Location Type	Public
Route	I-75 NB
Facility Type	Rest Area
Hours of Operation	24 hours per day
Truck Parking Spaces	44
Amenities	Restrooms, Handicap Facilities, Nighttime Security, Pet Walk Area, Picnic Tables, Vending Machines, Overnight Parking



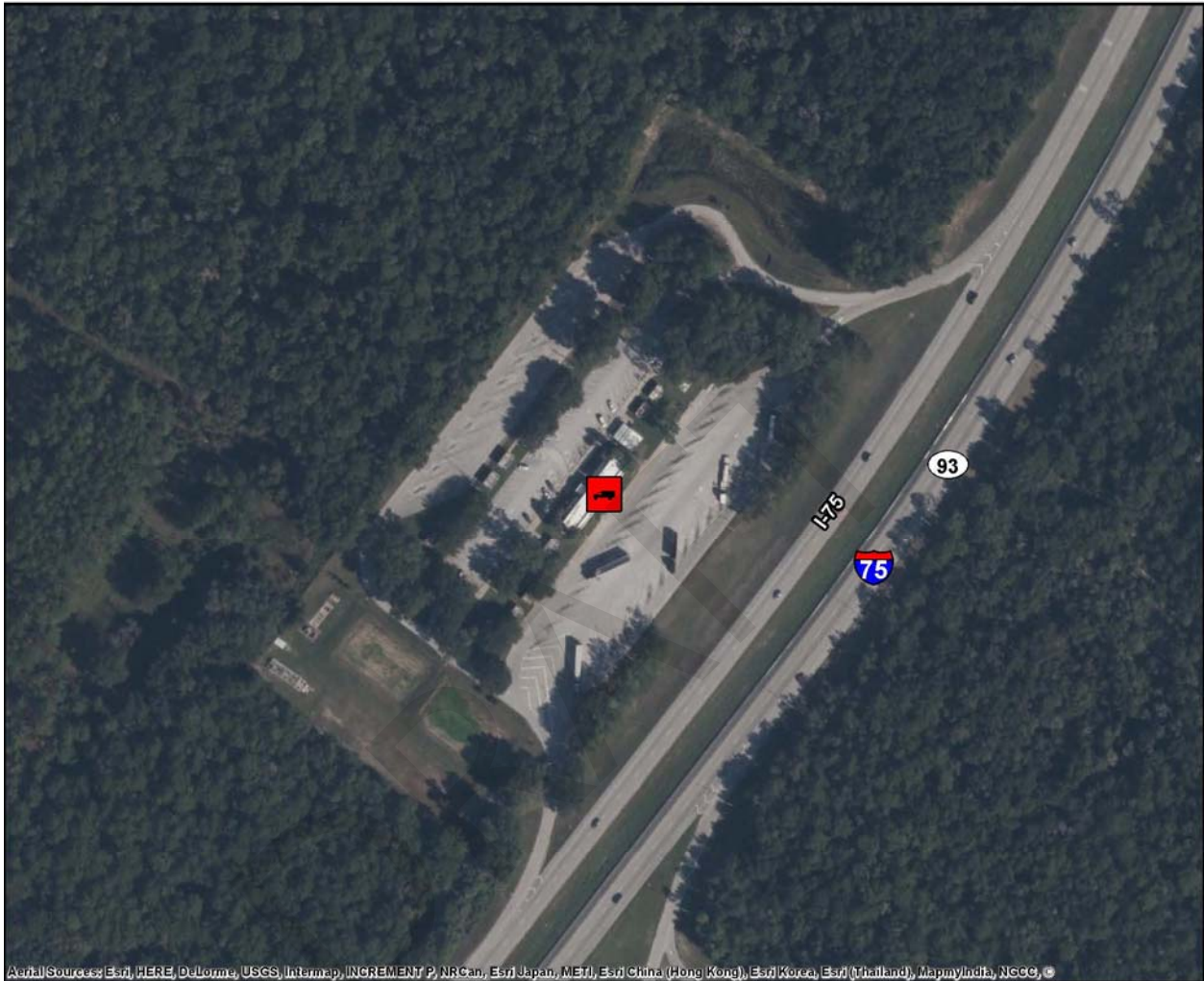
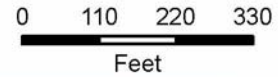
Online Map Link: <http://maps.google.com/maps?q=28.5841226573408,-82.2122758617>

District Five Truck Parking Study

Inventory of Existing Facilities

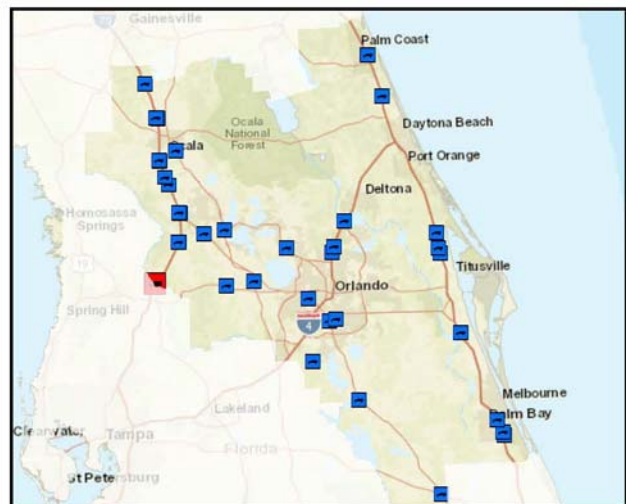
I-75 Southbound Rest Area

2 Miles South of CR 484



Aerial Sources: Esri, HERE, DeLorme, USGS, Intermap, INCREMENT P, NRCan, Esri Japan, METI, Esri China (Hong Kong), Esri Korea, Esri (Thailand), MapmyIndia, NGCC, ©

County	Sumter
Area	Croom
Location Type	Public
Route	I-75 SB
Facility Type	Rest Area
Hours of Operation	24 hours per day
Truck Parking Spaces	33
Amenities	Restrooms, Handicap Facilities, Nighttime Security, Pet Walk Area, Picnic Tables, Vending Machines, Overnight Parking



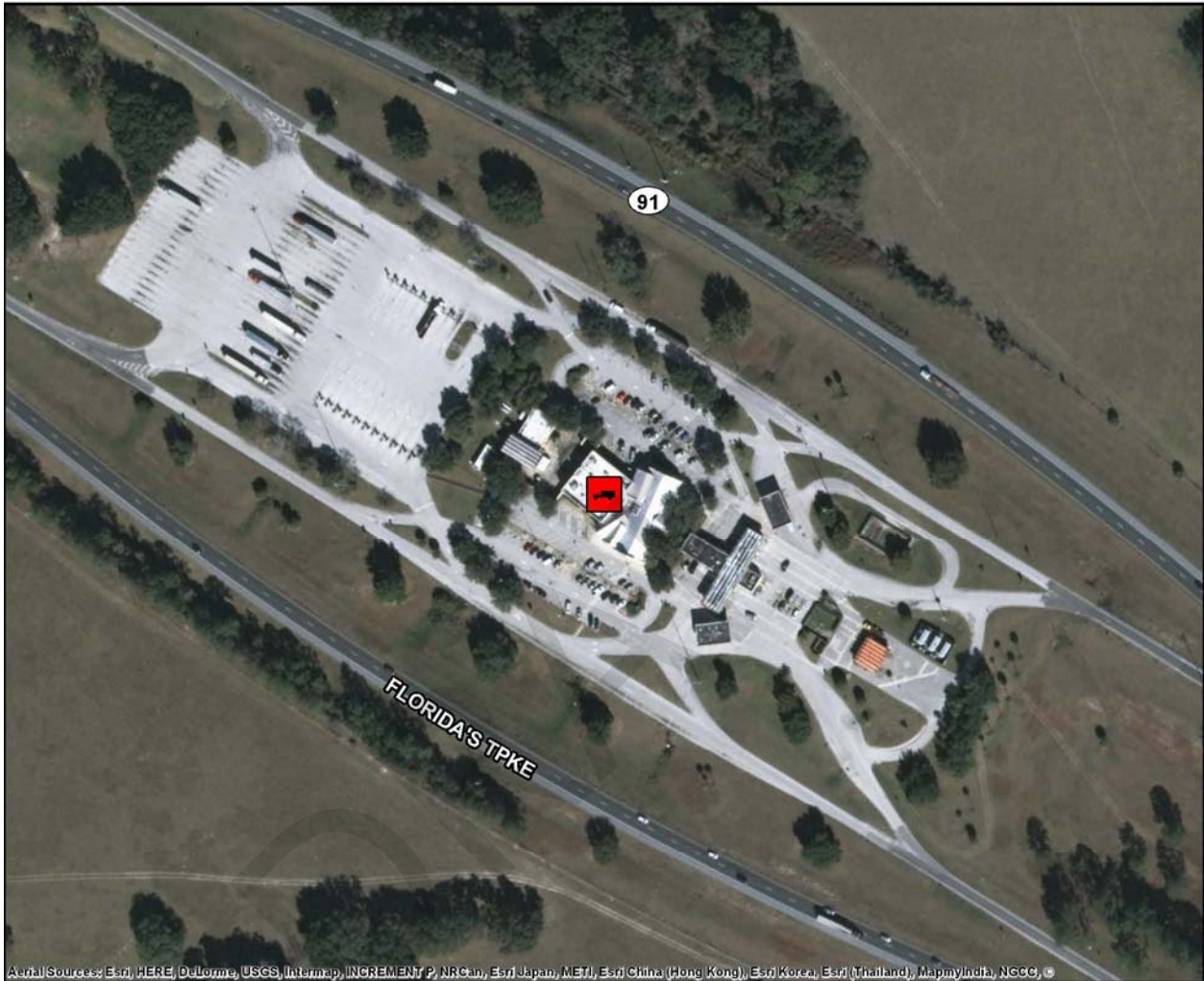
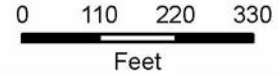
Online Map Link: <http://maps.google.com/maps?q=28.5877099573014,-82.2117063098006>

District Five Truck Parking Study

Inventory of Existing Facilities

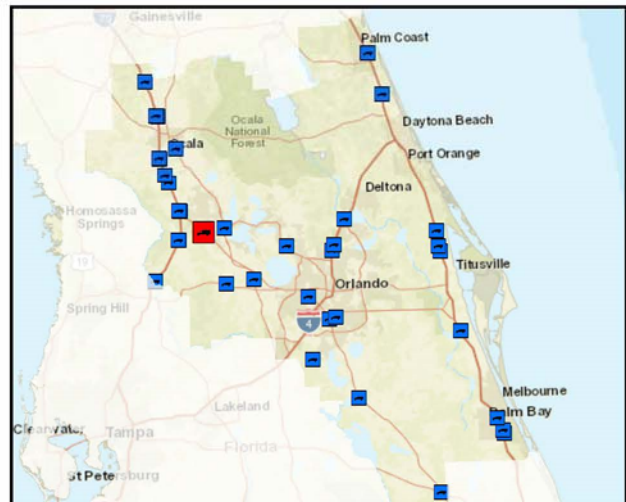
Okahumpka Service Plaza

299, FI-91, Wildwood, FL, 34785



Aerial Sources: Esri, HERE, DeLorme, USGS, Intermap, INCREMENT P, NRCan, Esri Japan, METI, Esri China (Hong Kong), Esri Korea, Esri (Thailand), MapmyIndia, NGCC, ©

County	Sumter
Area	Wildwood
Location Type	Public
Route	Florida's Turnpike (SR 91)
Facility Type	Service Plaza
Hours of Operation	24 hours per day
Truck Parking Spaces	62
Amenities	Restrooms, Convenience Store, Paved Parking, Fuel Pumps, Restaurants, Nighttime Security, Overnight Parking



Online Map Link: <http://maps.google.com/maps?q=28.7867291860873,-81.9821196906029>

District Five Truck Parking Study

Inventory of Existing Facilities

Private Locations

Within the nine counties of District Five there are 2,550 total private parking spaces; including **26 private truck parking locations** with **1,288 designated truck parking spaces**. These facilities offer an alternative option to the publicly available locations along the major interstates and state roads in Florida. Private facilities offer a plethora of amenities including private lounge areas, laundry, private showers, weigh scales and maintenance services.

Table 3-3 | Private Truck Parking Locations, FDOT District Five

Location Name	Route	County	Truck Parking Spaces
Sunoco Gas Station	I-95	Brevard	2
Pilot Travel Center	SR 520	Brevard	9
BP Gas Station	SR 520	Brevard	25
Stuckey's Gas Station	CR 5A	Brevard	3
Kangaroo Express Gas Station	SR 50	Lake	2
Circle K Gas Station	US 27	Lake	2
Circle K/Shell Gas Station	US 27	Lake	2
Pilot Travel Center	FL 484	Marion	50
Marathon Gas Station	US 27	Marion	8
Pilot Travel Center	FL 326	Marion	105
Pilot Travel Center	FL 326	Marion	105
Love's Travel Center	FL 326	Marion	75
TA-Petro Stopping Center	CR 318	Marion	250
Acme Truck Stop	US 441	Orange	120
Acme Truck Stop	SR 527	Orange	10
Zellwood Truck Stop	US 441	Orange	24
Pilot Travel Center	FL 60	Osceola	15
Wawa Gas Station	US 17	Osceola	2
Circle K Gas Station	Monroe Road	Seminole	3
Spirit Truck Stop	CR 470	Lake	20
Pilot Travel Center	FL-44	Lake	60
Pilot Travel Center	FL-44	Lake	112
TA Wildwood Truck Stop	FL-44	Lake	155

District Five Truck Parking Study

Inventory of Existing Facilities

Location Name	Route	County	Truck Parking Spaces
Citgo Gas Station	FL-44	Lake	20
Mobil Gas Station	C470	Sumter	2
Love's Travel Center	US 1	Volusia	107

Note: Individual stops and gas stations were contacted to confirm the number of available truck parking spaces.
Source: FDOT / FHWA, Jason's Law Survey, 2015

It is important to note many private truck parking locations do not have striped parking spaces; in these cases, the number of spaces varies based on the size and how vehicles are positioned and/or parked in the area available for commercial vehicle parking.

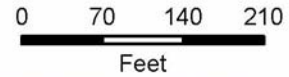
DRAFT

District Five Truck Parking Study

Inventory of Existing Facilities

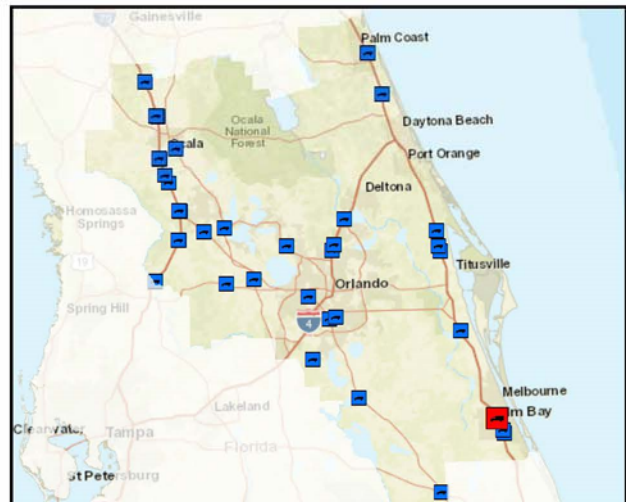
Sunoco Gas Station

1180 Malabar Road Southeast, Palm Bay, FL, 32907



Aerial Sources: Esri, HERE, DeLorme, USGS, Intermap, INCREMENT P, NRCan, Esri Japan, METI, Esri China (Hong Kong), Esri Korea, Esri (Thailand), MapmyIndia, NGCC, ©

County	Brevard
Area	Palm Bay
Location Type	Private
Route	I-95
Facility Type	Gas Station
Hours of Operation	24 hours per day
Truck Parking Spaces	2
Amenities	Restrooms, Convenience Store, Paved Parking, Fuel Pumps, Showers



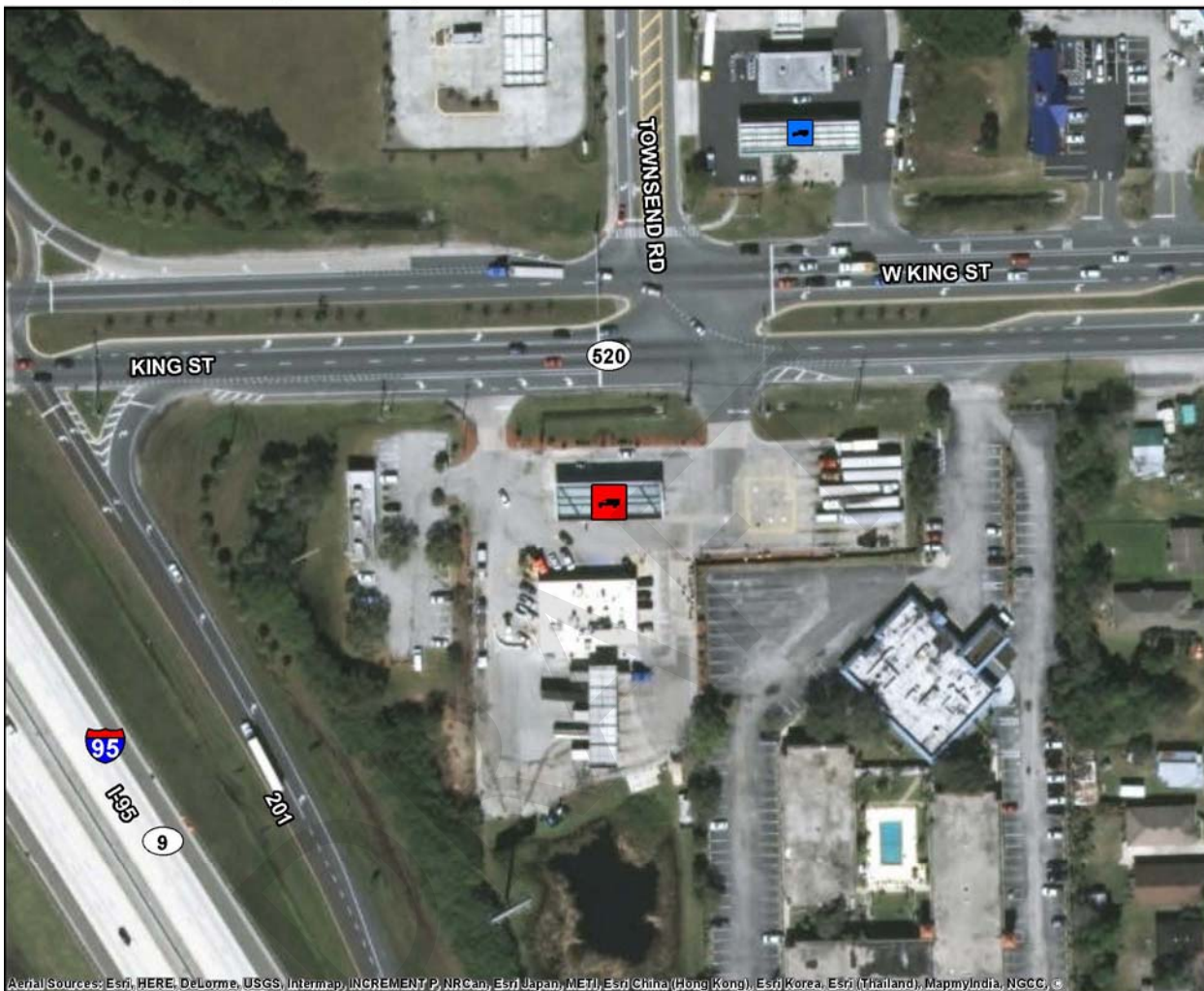
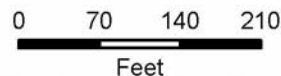
Online Map Link: <http://maps.google.com/maps?q=27.9980195933574,-80.6322344658787>

District Five Truck Parking Study

Inventory of Existing Facilities

Pilot Travel Center

4455 West Kings Street, Cocoa, FL, 32929



Aerial Sources: Esri, HERE, DeLorme, USGS, Intermap, INCREMENT P, NRCan, Esri Japan, METI, Esri China (Hong Kong), Esri Korea, Esri (Thailand), MapmyIndia, NGCC, ©

County	Brevard
Area	Cocoa
Location Type	Private
Route	SR 520
Facility Type	Truck Stop
Hours of Operation	24 hours per day
Truck Parking Spaces	9
Amenities	Restrooms, Convenience/Travel/Trucker Store, Laundry, Paved Parking, Fuel Pumps, Showers, Overnight Parking



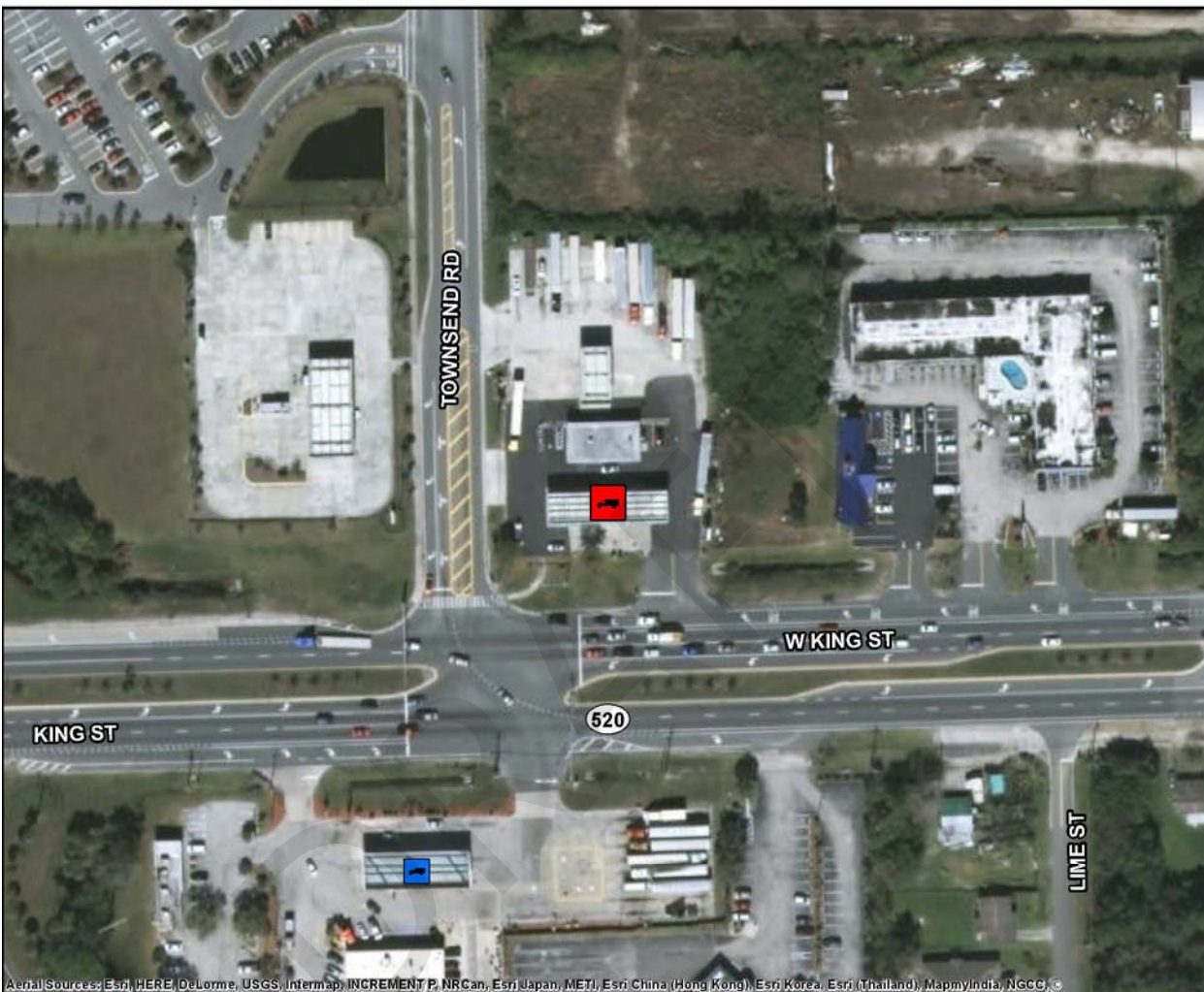
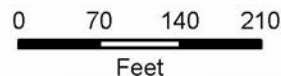
Online Map Link: <http://maps.google.com/maps?q=28.3593804968324,-80.7924137550816>

District Five Truck Parking Study

Inventory of Existing Facilities

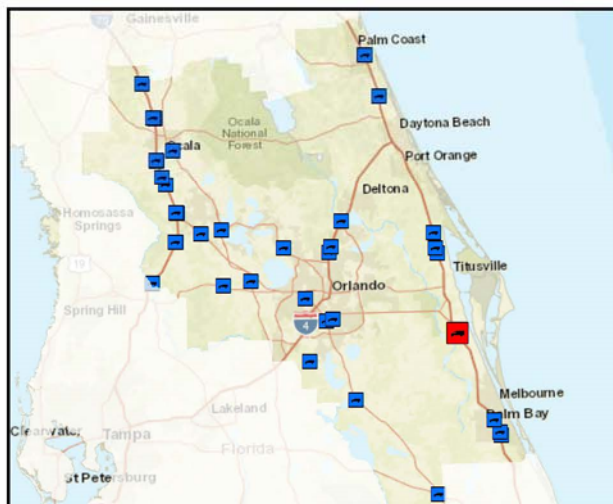
BP Gas Station

4220 West Kings Street, Cocoa, FL, 32926



Aerial Sources: Esri, HERE, DeLorme, USGS, Intermap, INCREMENT P, NRCan, Esri Japan, METI, Esri China (Hong Kong), Esri Korea, Esri (Thailand), MapmyIndia, NGCC, ©

County	Brevard
Area	Cocoa
Location Type	Private
Route	SR 520
Facility Type	Gas Station
Hours of Operation	24 hours per day
Truck Parking Spaces	25
Amenities	Restrooms, Convenience Store, Fuel Pumps



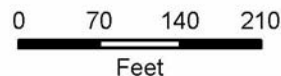
Online Map Link: <http://maps.google.com/maps?q=28.3602750961982,-80.7918540730804>

District Five Truck Parking Study

Inventory of Existing Facilities

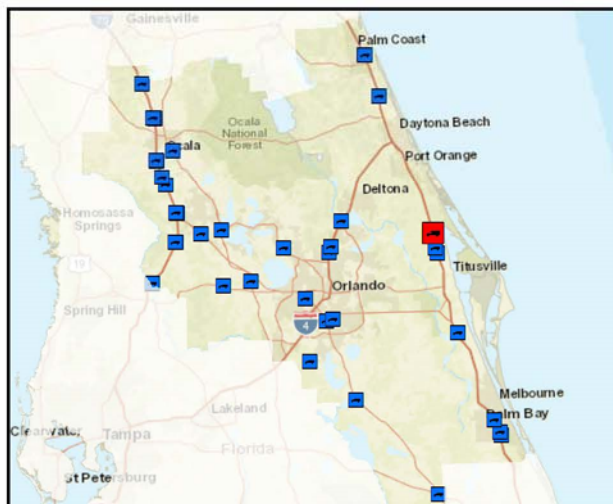
Stuckey's Gas Station

4250 Stuckey Way Road, Scottsmoor, FL, 32775



Aerial Sources: Esri, HERE, DeLorme, USGS, Intermap, INCREMENT P, NRCan, Esri Japan, METI, Esri China (Hong Kong), Esri Korea, Esri (Thailand), MapmyIndia, NGCC, ©

County	Brevard
Area	Scottsmoor
Location Type	Private
Route	CR 5A
Facility Type	Gas Station
Hours of Operation	7am-11pm
Truck Parking Spaces	3
Amenities	Restrooms, Convenience Store, Paved Parking, Fuel Pumps, Restaurants



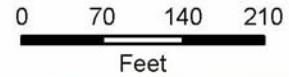
Online Map Link: <http://maps.google.com/maps?q=28.7731945808497,-80.8928488605857>

District Five Truck Parking Study

Inventory of Existing Facilities

Kangaroo Express Gas Station

451 West Myers, Mascotte, FL, 34753



Aerial Sources: Esri, HERE, DeLorme, USGS, Intermap, INCREMENT P, NRCan, Esri Japan, METI, Esri China (Hong Kong), Esri Korea, Esri (Thailand), MapmyIndia, NGCC, ©

County	Lake
Area	Mascotte
Location Type	Private
Route	SR 50
Facility Type	Gas Station
Hours of Operation	24 hours per day
Truck Parking Spaces	2
Amenities	Restrooms, Convenience Store, Laundry, Paved Parking, Fuel Pumps



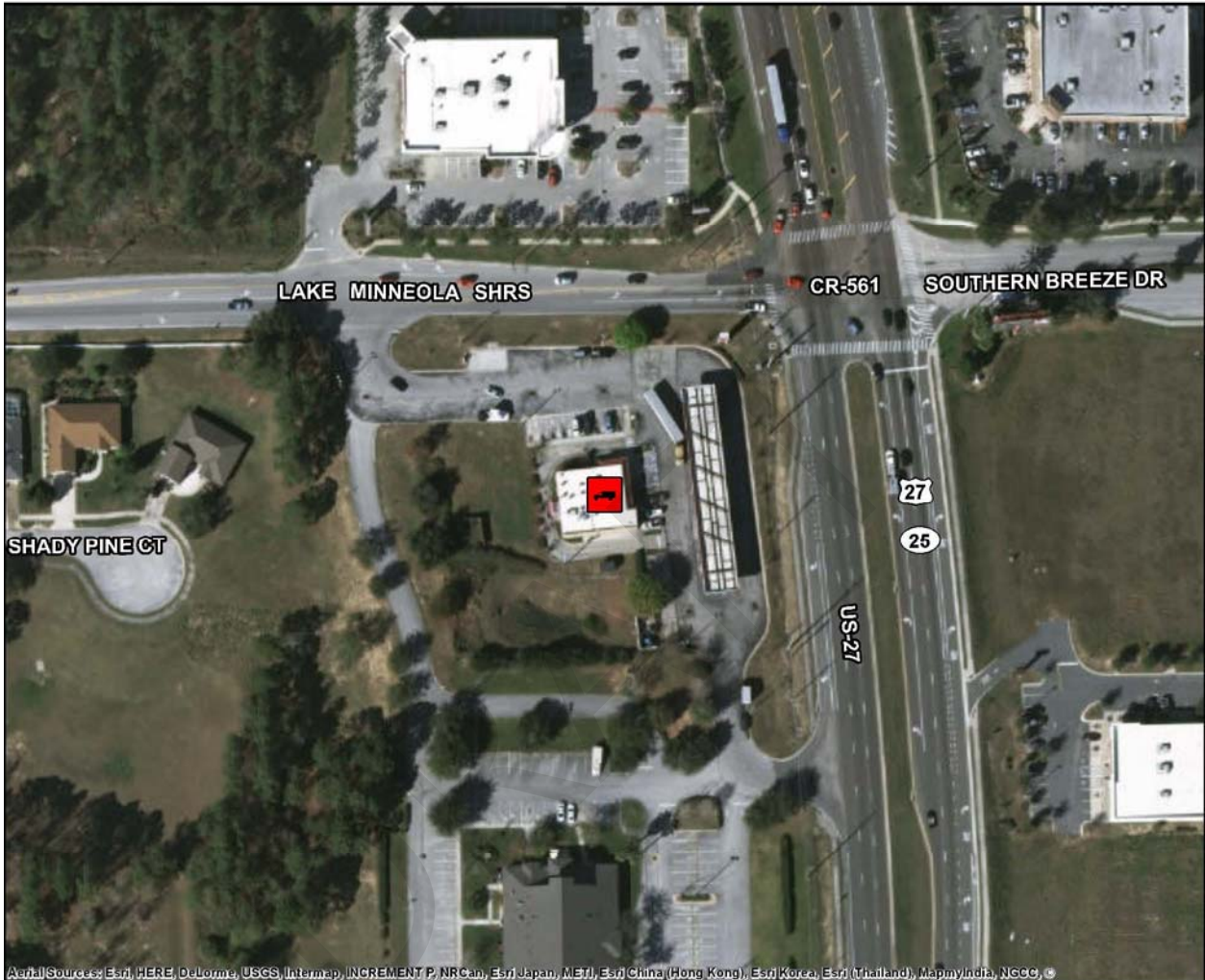
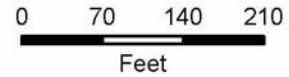
Online Map Link: <http://maps.google.com/maps?q=28.5739602126025,-81.8814598744691>

District Five Truck Parking Study

Inventory of Existing Facilities

Circle K Gas Station

810 US Highway 27, Minneola, FL, 34715



Aerial Sources: Esri, HERE, DeLorme, USGS, Intermap, INCREMENT P, NRCan, Esri Japan, METI, Esri China (Hong Kong), Esri Korea, Esri (Thailand), MapmyIndia, NGCC, ©

County	Lake
Area	Minneola
Location Type	Private
Route	US 27
Facility Type	Gas Station
Hours of Operation	24 hours per day
Truck Parking Spaces	2
Amenities	Restrooms, Convenience Store, Paved Parking, Fuel Pumps



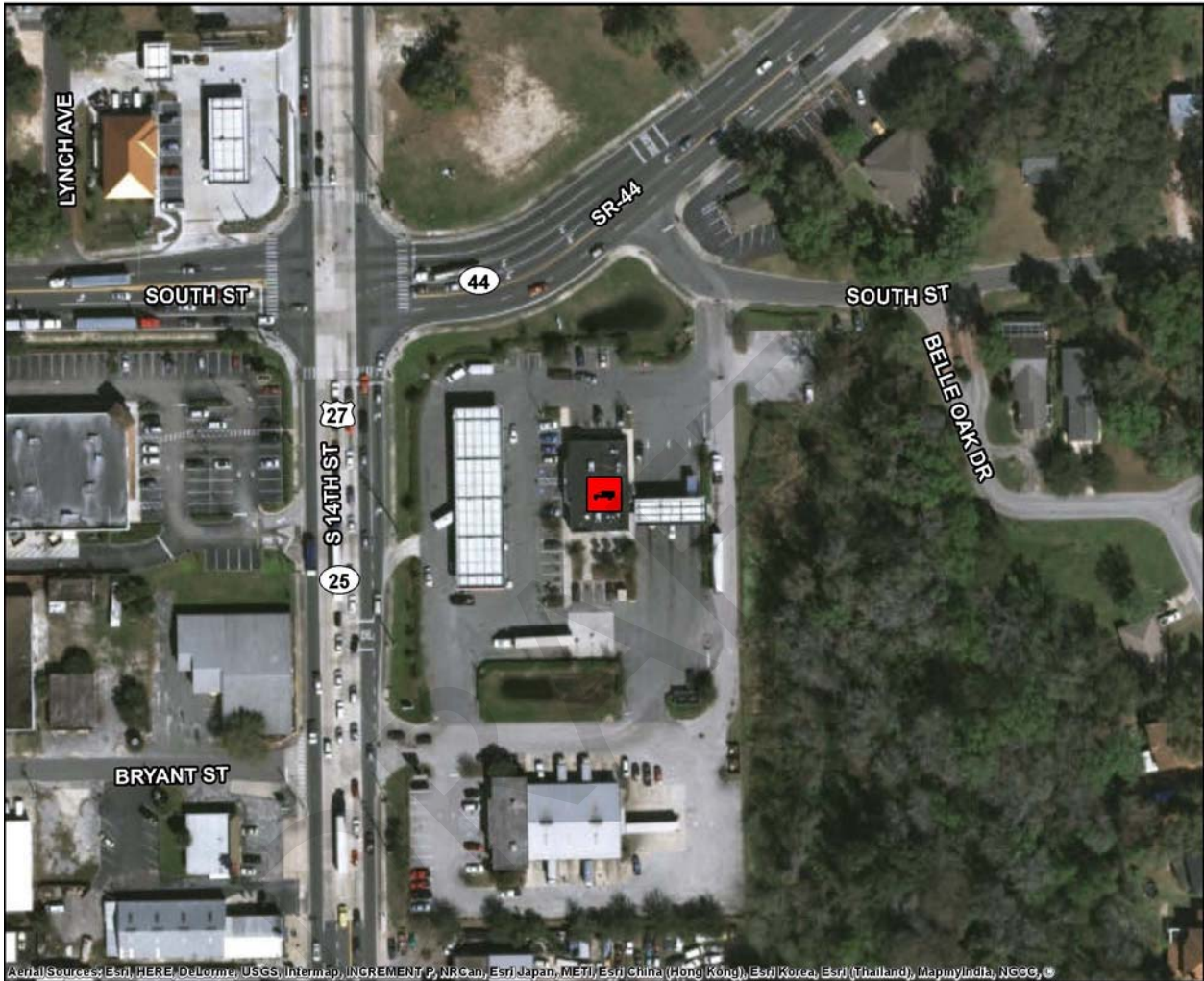
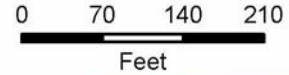
Online Map Link: <http://maps.google.com/maps?q=28.5898864224756,-81.7527384883281>

District Five Truck Parking Study

Inventory of Existing Facilities

Circle K/Shell Gas Station

900 South 14th Street, Leesburg, FL, 34748



Aerial Sources: Esri, HERE, DeLorme, USGS, Intermap, INCREMENT P, NRCan, Esri Japan, METI, Esri China (Hong Kong), Esri Korea, Esri (Thailand), MapmyIndia, NGCC, ©

County	Lake
Area	Leesburg
Location Type	Private
Route	US 27
Facility Type	Gas Station
Hours of Operation	24 hours per day
Truck Parking Spaces	2
Amenities	Restrooms, Convenience Store, Paved Parking, Fuel Pumps



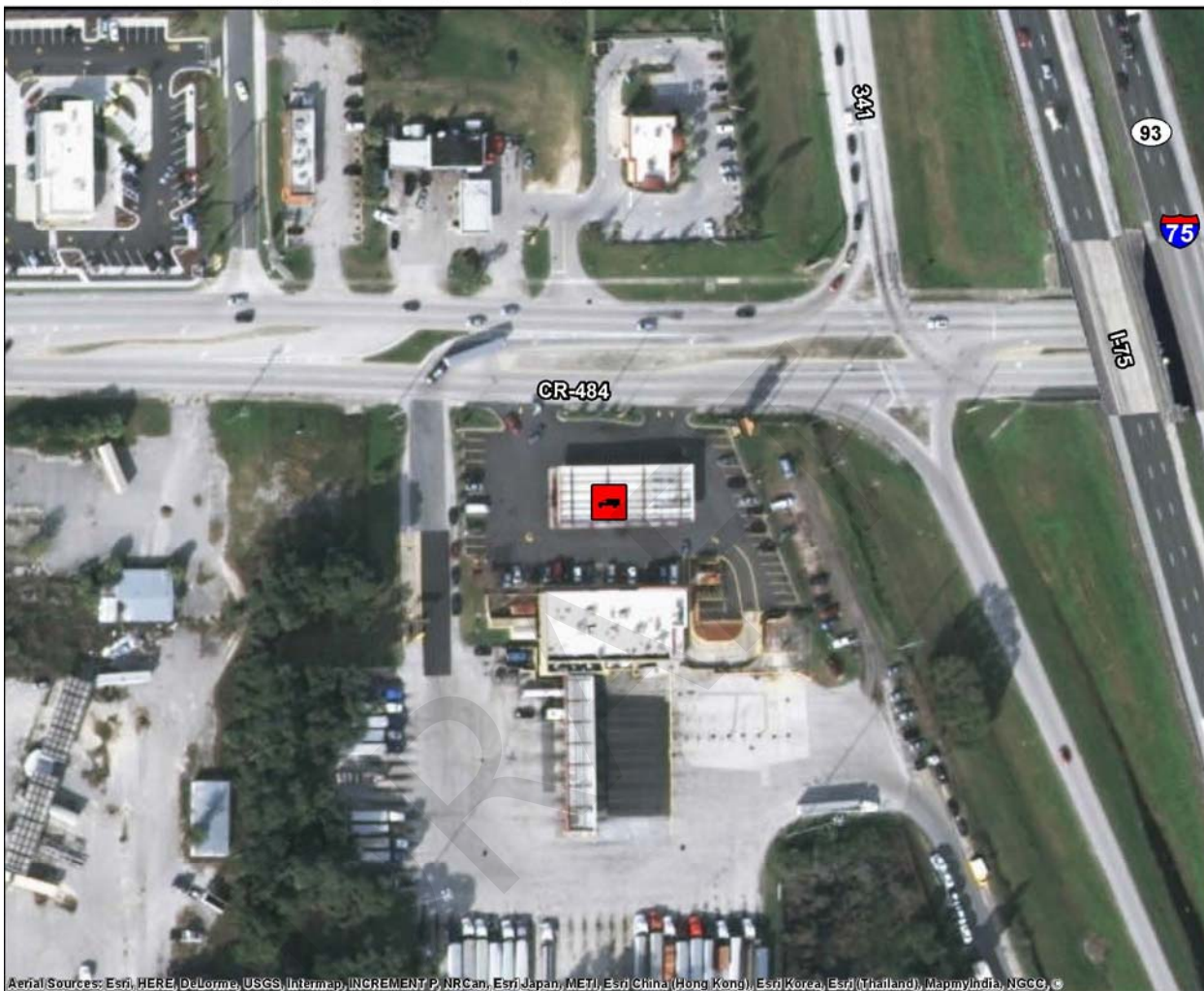
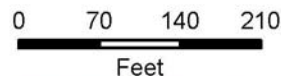
Online Map Link: <http://maps.google.com/maps?q=28.8025367878963,-81.88687118911>

District Five Truck Parking Study

Inventory of Existing Facilities

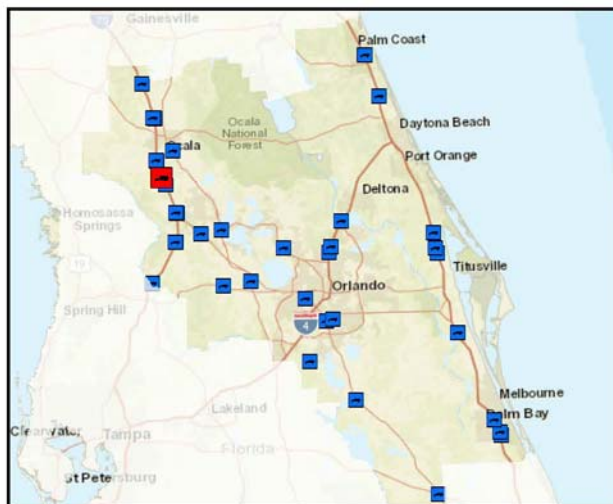
Pilot Travel Center

2020 Southwest County Highway 484, Ocala, FL, 34473



Aerial Sources: Esri, HERE, DeLorme, USGS, Intermap, INCREMENT P, NRCan, Esri Japan, METI, Esri China (Hong Kong), Esri Korea, Esri (Thailand), MapmyIndia, NGCC, ©

County	Marion
Area	Ocala
Location Type	Private
Route	FL 484
Facility Type	Truck Stop
Hours of Operation	24 hours per day
Truck Parking Spaces	50
Amenities	Restrooms, CAT/Certified/Weigh Scales, Convenience/Travel/Trucker Store, Paved Parking, Fuel Pumps, Showers, Restaurants, Overnight Parking



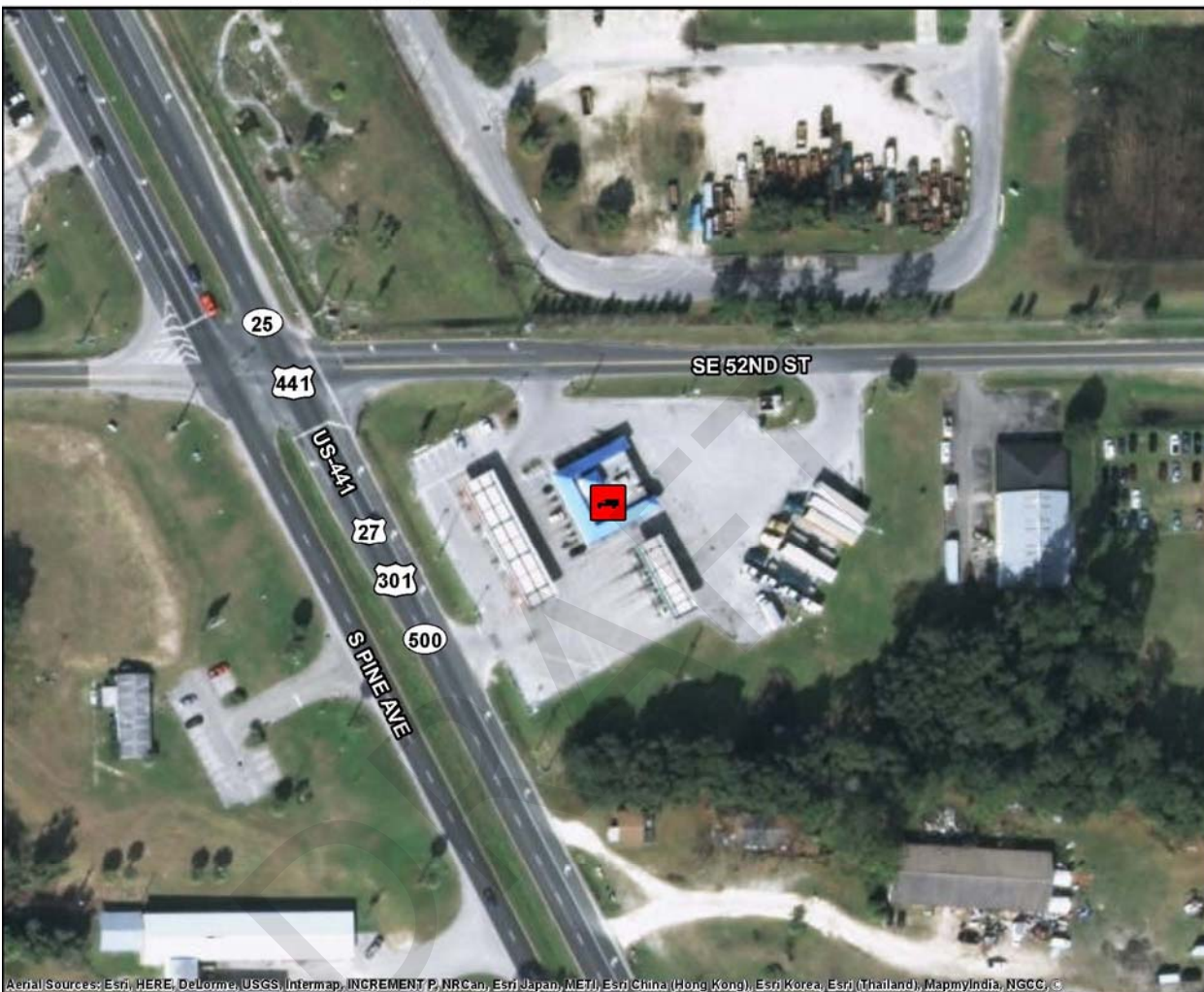
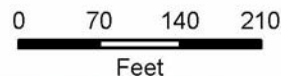
Online Map Link: <http://maps.google.com/maps?q=29.0251418189408,-82.1590952863287>

District Five Truck Parking Study

Inventory of Existing Facilities

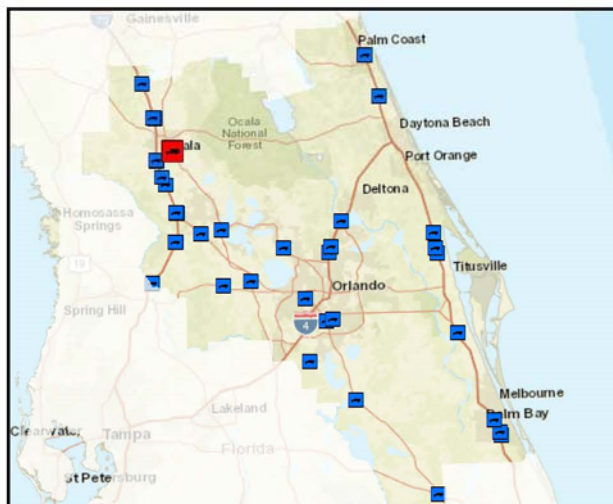
Marathon Gas Station

5201 South Pine Avenue, Ocala, FL, 34480



Aerial Sources: Esri, HERE, DeLorme, USGS, Intermap, INCREMENT P, NRCan, Esri Japan, METI, Esri China (Hong Kong), Esri Korea, Esri (Thailand), MapmyIndia, NGCC, C

County	Marion
Area	Ocala
Location Type	Private
Route	US 27
Facility Type	Gas Station
Hours of Operation	24 hours per day
Truck Parking Spaces	8
Amenities	Restrooms, Convenience Store, Paved Parking, Fuel Pumps



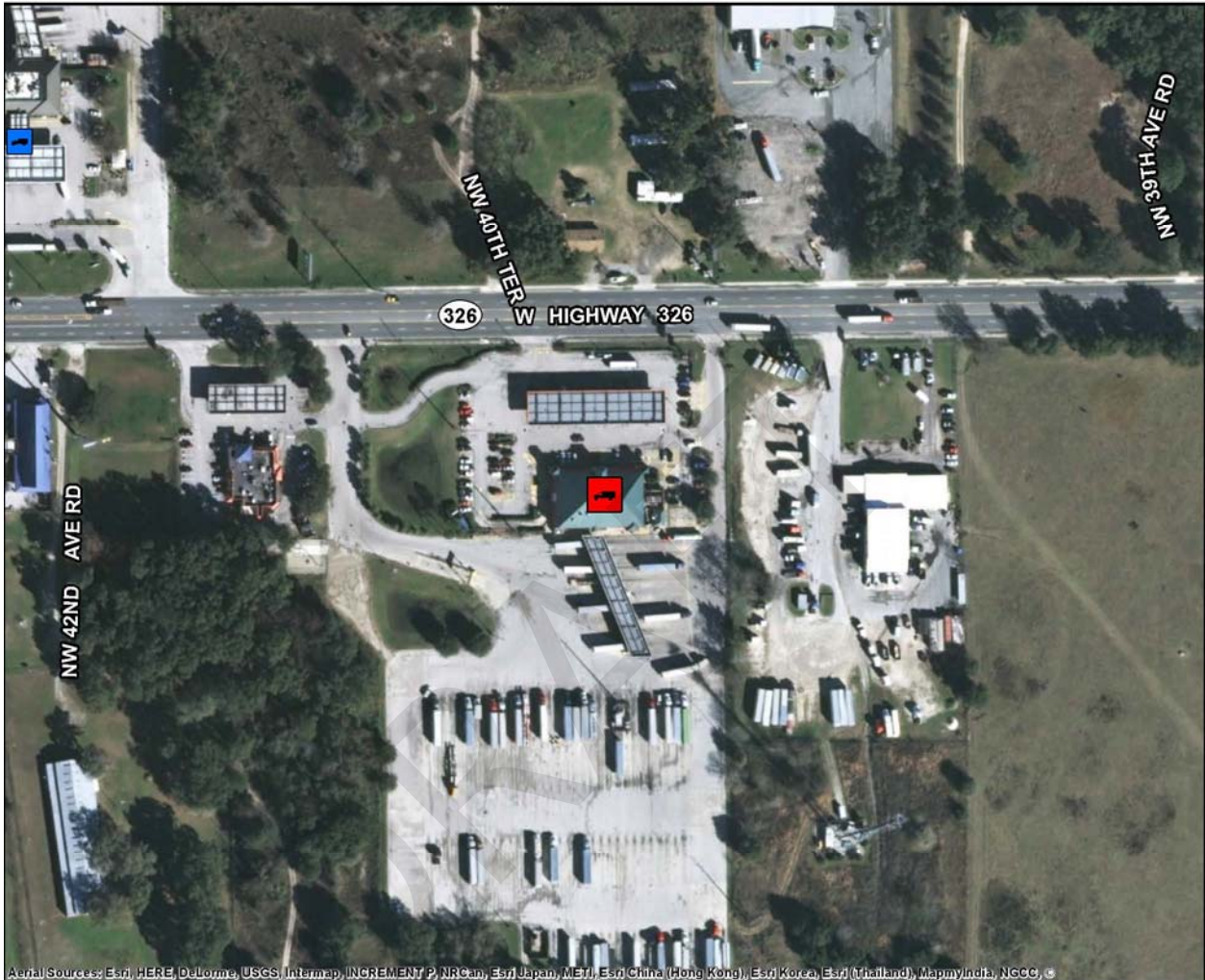
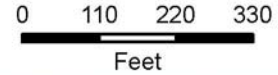
Online Map Link: <http://maps.google.com/maps?q=29.1349806392823,-82.106879952979>

District Five Truck Parking Study

Inventory of Existing Facilities

Pilot Travel Center

4032 West Highway 326, Ocala, FL, 34482



Aerial Sources: Esri, HERE, DeLorme, USGS, Intermap, INCREMENT P, NRCan, Esri Japan, METI, Esri China (Hong Kong), Esri Korea, Esri (Thailand), MapmyIndia, NGCC, ©

County	Marion
Area	Ocala
Location Type	Private
Route	FL 326
Facility Type	Truck Stop
Hours of Operation	24 hours per day
Truck Parking Spaces	105
Amenities	Restrooms, CAT/Certified/Weigh Scales, Convenience/Travel/Trucker Store, Paved Parking, Fuel Pumps, Showers, Restaurants, Overnight Parking



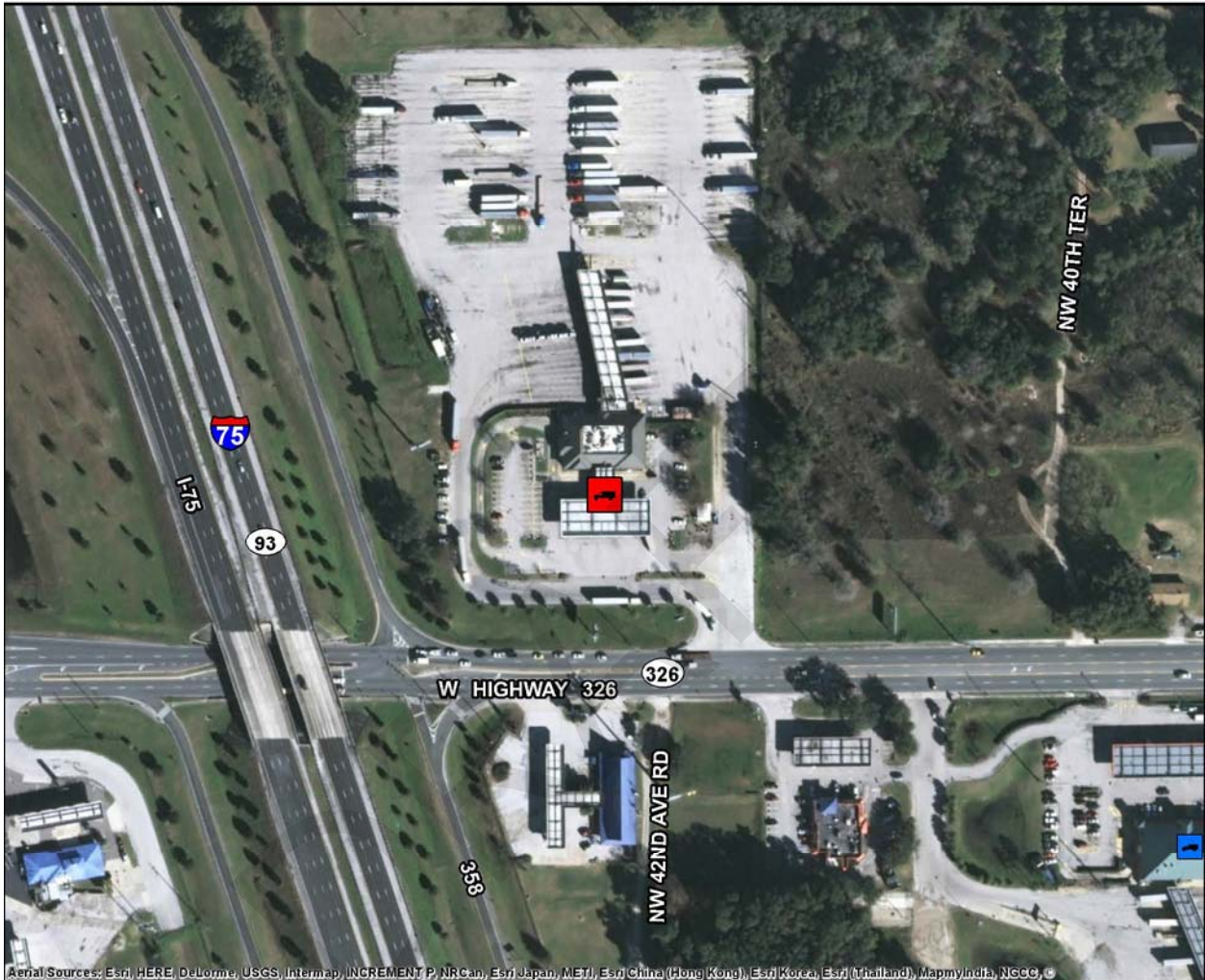
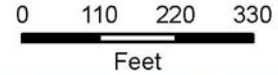
Online Map Link: <http://maps.google.com/maps?q=29.2662158996879,-82.1888937598585>

District Five Truck Parking Study

Inventory of Existing Facilities

Pilot Travel Center

4255 FL-326, Ocala, FL, 34482



Aerial Sources: Esri, HERE, DeLorme, USGS, Intermap, INCREMENT P, NRCan, Esri Japan, METI, Esri China (Hong Kong), Esri Korea, Esri (Thailand), MapmyIndia, NGCC, C

County	Marion
Area	Ocala
Location Type	Private
Route	FL 326
Facility Type	Truck Stop
Hours of Operation	24 hours per day
Truck Parking Spaces	105
Amenities	Restrooms, CAT/Certified/Weigh Scales, Convenience/Travel/Trucker Store, Laundry, Paved Parking, Fuel Pumps, Shower, Restaurants, Overnight Parking



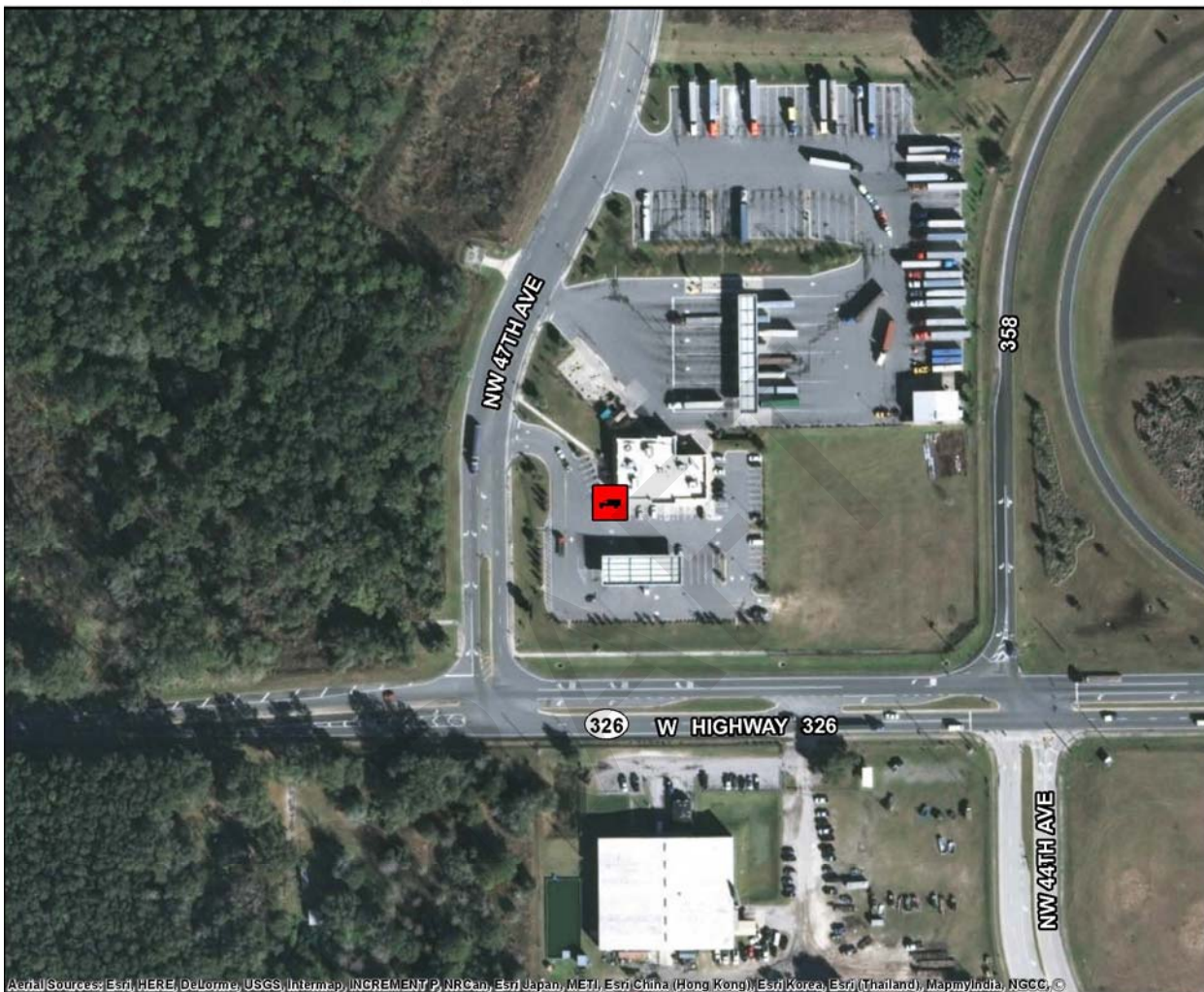
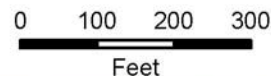
Online Map Link: <http://maps.google.com/maps?q=29.2676937941968,-82.1916056012996>

District Five Truck Parking Study

Inventory of Existing Facilities

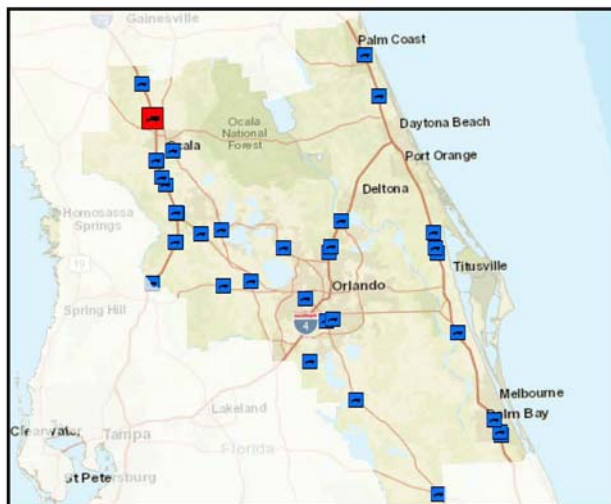
Love's Travel Center

7791 Northwest 47th Avenue, Ocala, FL, 34482



Aerial Sources: Esri, HERE, DeLorme, USGS, Intermap, INCREMENT P, NRCan, Esri Japan, METI, Esri China (Hong Kong), Esri Korea, Esri (Thailand), MapmyIndia, NGCC, ©

County	Marion
Area	Ocala
Location Type	Private
Route	FL 326
Facility Type	Truck Stop
Hours of Operation	24 hours per day
Truck Parking Spaces	75
Amenities	Restrooms, CAT/Certified/Weigh Scales, Convenience Store, Lighting, Lounge Area, Paved Parking, Fuel Pumps, Showers, Restaurants, Overnight Parking



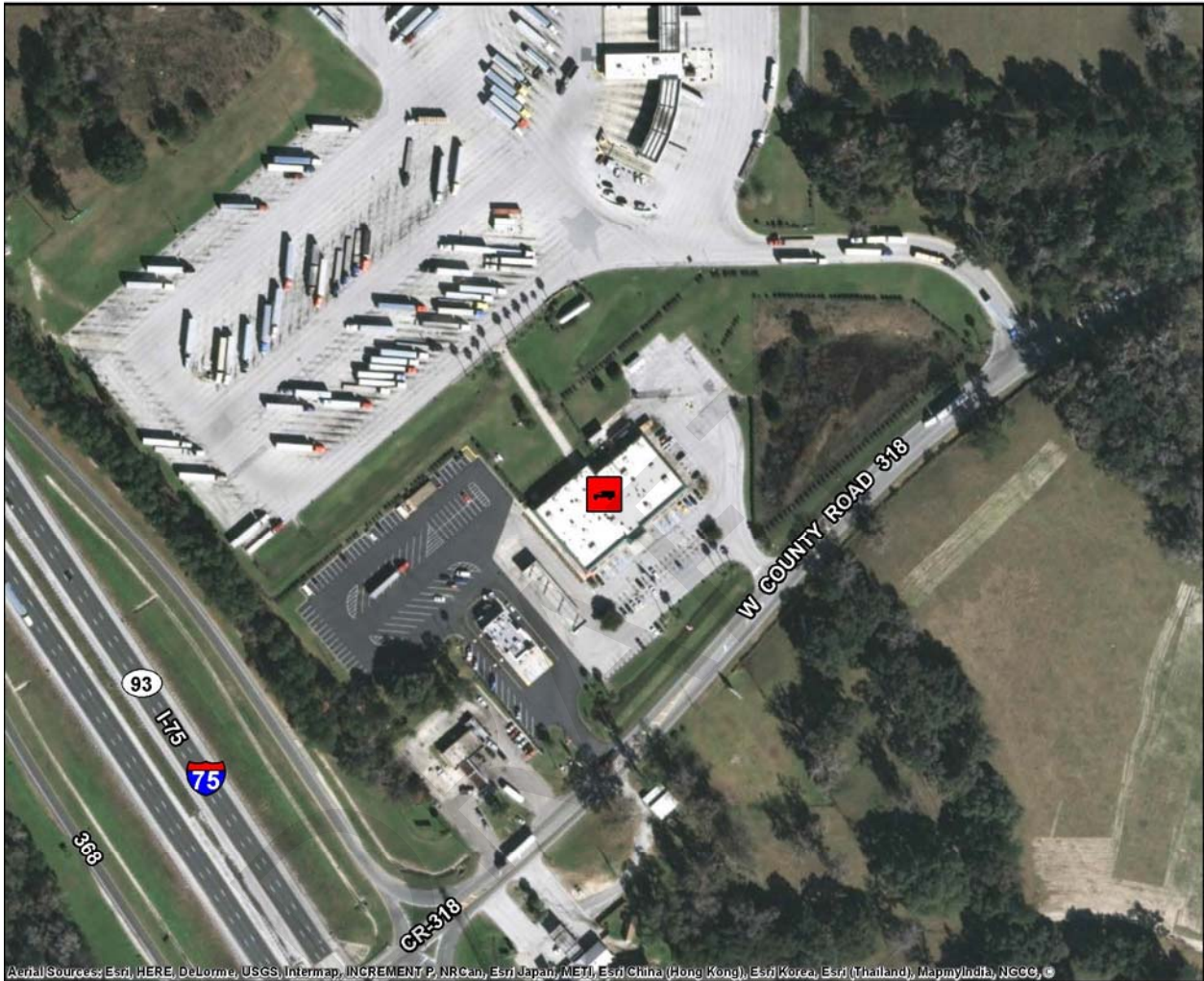
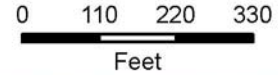
Online Map Link: <http://maps.google.com/maps?q=29.2677694148126,-82.1985596501054>

District Five Truck Parking Study

Inventory of Existing Facilities

TA-Petro Stopping Center

7401 County Road 318, Reddick, FL, 32686



Aerial Sources: Esri, HERE, DeLorme, USGS, Intermap, INCREMENT P, NRCan, Esri Japan, METI, Esri China (Hong Kong), Esri Korea, Esri (Thailand), MapmyIndia, NGCC, ©

County	Marion
Area	Reddick
Location Type	Private
Route	CR 318
Facility Type	Truck Stop
Hours of Operation	24 hours per day
Truck Parking Spaces	250
Amenities	Restrooms, CAT/Certified/Weigh Scales, Convenience/Travel/Trucker Store, Laundry, Lounge Area, Fuel Pumps, Paved Parking, Showers, Restaurants, Overnight Parking



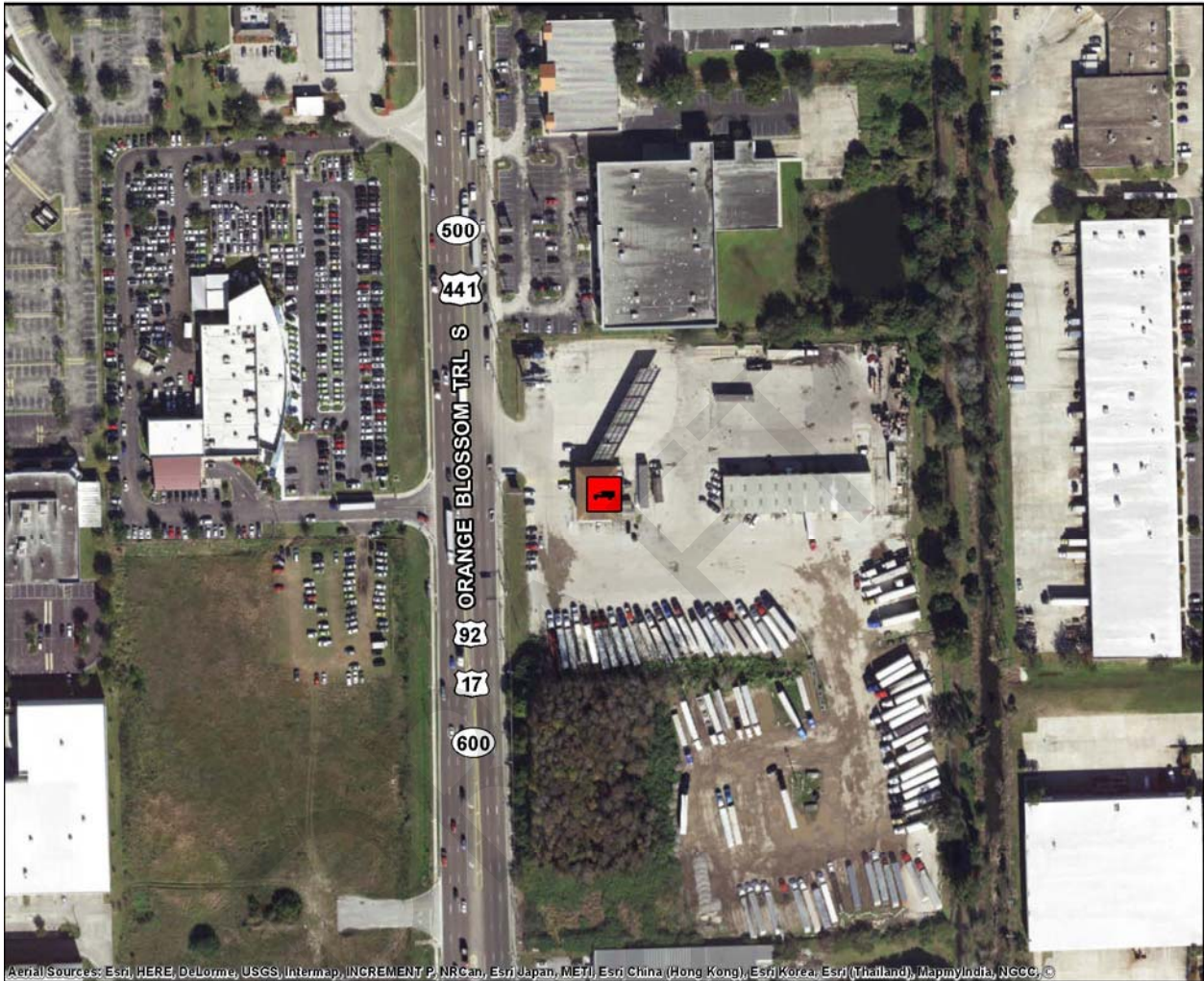
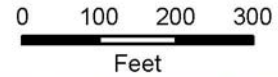
Online Map Link: <http://maps.google.com/maps?q=29.4089895507405,-82.2462820661719>

District Five Truck Parking Study

Inventory of Existing Facilities

Acme Truck Stop

9565 South Orange Blossom Trail, Orlando, FL, 32837



Aerial Sources: Esri, HERE, DeLorme, USGS, Intermap, INCREMENT P, NRCan, Esri Japan, METI, Esri China (Hong Kong), Esri Korea, Esri (Thailand), MapmyIndia, NGCC, ©

County	Orange
Area	Orlando
Location Type	Private
Route	US 441
Facility Type	Truck Stop
Hours of Operation	6am-11pm
Truck Parking Spaces	120
Amenities	Restrooms, CAT/Certified/Weigh Scales, Convenience/Travel/Trucker Store, Laundry, Lighting, Paved Parking, Lounge Area, Fuel Pumps, Showers, Overnight Parking



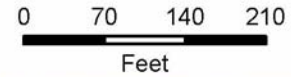
Online Map Link: <http://maps.google.com/maps?q=28.4189713018409,-81.4041055332757>

District Five Truck Parking Study

Inventory of Existing Facilities

Acme Truck Stop

304 4th Street, Orlando, FL, 32824



Aerial Sources: Esri, HERE, DeLorme, USGS, Intermap, INCREMENT P, NRCan, Esri Japan, METI, Esri China (Hong Kong), Esri Korea, Esri (Thailand), MapmyIndia, NGCC, ©

County	Orange
Area	Orlando
Location Type	Private
Route	SR 527
Facility Type	Truck Stop
Hours of Operation	5am-10pm
Truck Parking Spaces	10
Amenities	Restrooms, Convenience Store, Laundry, Paved Parking, Fuel Pumps, Restaurants, Overnight Parking



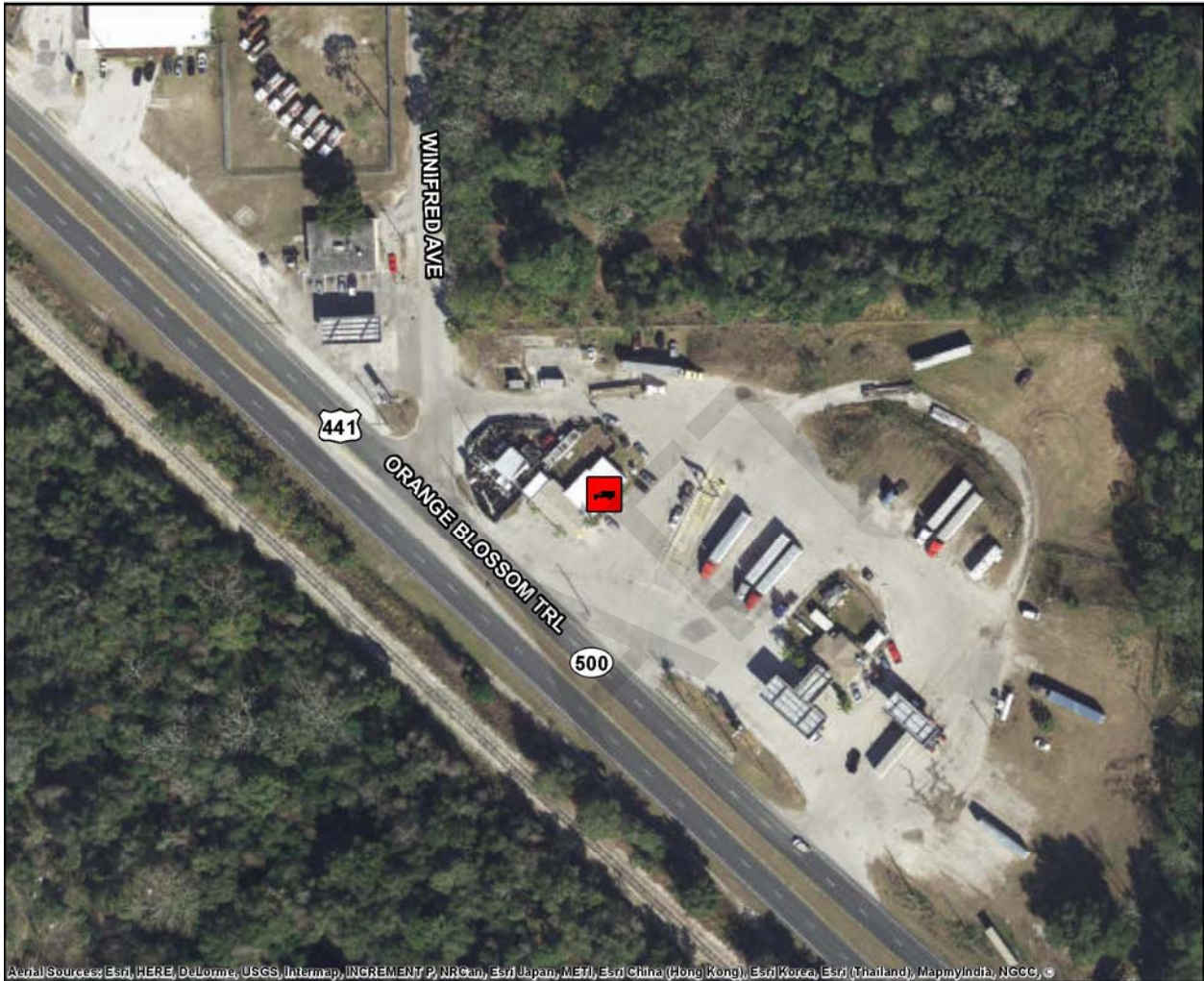
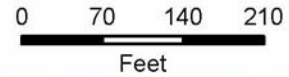
Online Map Link: <http://maps.google.com/maps?q=28.428367773042,-81.3721051732088>

District Five Truck Parking Study

Inventory of Existing Facilities

Zellwood Truck Stop

2607 West Orange Blossom Trail, Zellwood, FL, 32798



Aerial Sources: Esri, HERE, DeLorme, USGS, Intermap, INCREMENT P, NRCan, Esri Japan, METI, Esri China (Hong Kong), Esri Korea, Esri (Thailand), MapmyIndia, NGCC, ©

County	Orange
Area	Zellwood
Location Type	Private
Route	US 441
Facility Type	Truck Stop
Hours of Operation	6am-8pm
Truck Parking Spaces	24
Amenities	Restrooms, CAT/Certified/Weigh Scales, Convenience/Travel/Trucker Store, Paved Parking, Fuel Pumps, Showers, Overnight Parking



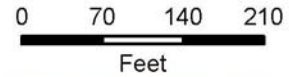
Online Map Link: <http://maps.google.com/maps?q=28.7232260656048,-81.5965814772871>

District Five Truck Parking Study

Inventory of Existing Facilities

Pilot Travel Center

3051 FL-60, Okeechobee, FL, 34972



Aerial Sources: Esri, HERE, DeLorme, USGS, Intermap, INCREMENT P, NRCan, Esri Japan, METI, Esri China (Hong Kong), Esri Korea, Esri (Thailand), MapmyIndia, NGCC, ©

County	Osceola
Area	Okeechobee
Location Type	Private
Route	FL 60
Facility Type	Truck Stop
Hours of Operation	24 hours per day
Truck Parking Spaces	15
Amenities	Restrooms, CAT/Certified/Weigh Scales, Convenience/Travel/Trucker Store, Paved Parking, Fuel Pumps, Showers, Restaurants, Overnight Parking



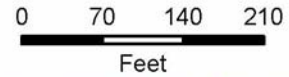
Online Map Link: <http://maps.google.com/maps?q=27.699039943538,-80.9015093319119>

District Five Truck Parking Study

Inventory of Existing Facilities

Wawa Gas Station

5035 South Orange Blossom Trail, Kissimmee, FL, 34758



Aerial Sources: Esri, HERE, DeLorme, USGS, Intermap, INCREMENT P, NRCan, Esri Japan, METI, Esri China (Hong Kong), Esri Korea, Esri (Thailand), MapmyIndia, NGCC, ©

County	Osceola
Area	Kissimmee
Location Type	Private
Route	US 17
Facility Type	Gas Station
Hours of Operation	24 hours per day
Truck Parking Spaces	2
Amenities	Restrooms, Convenience Store, Paved Parking, Fuel Pumps



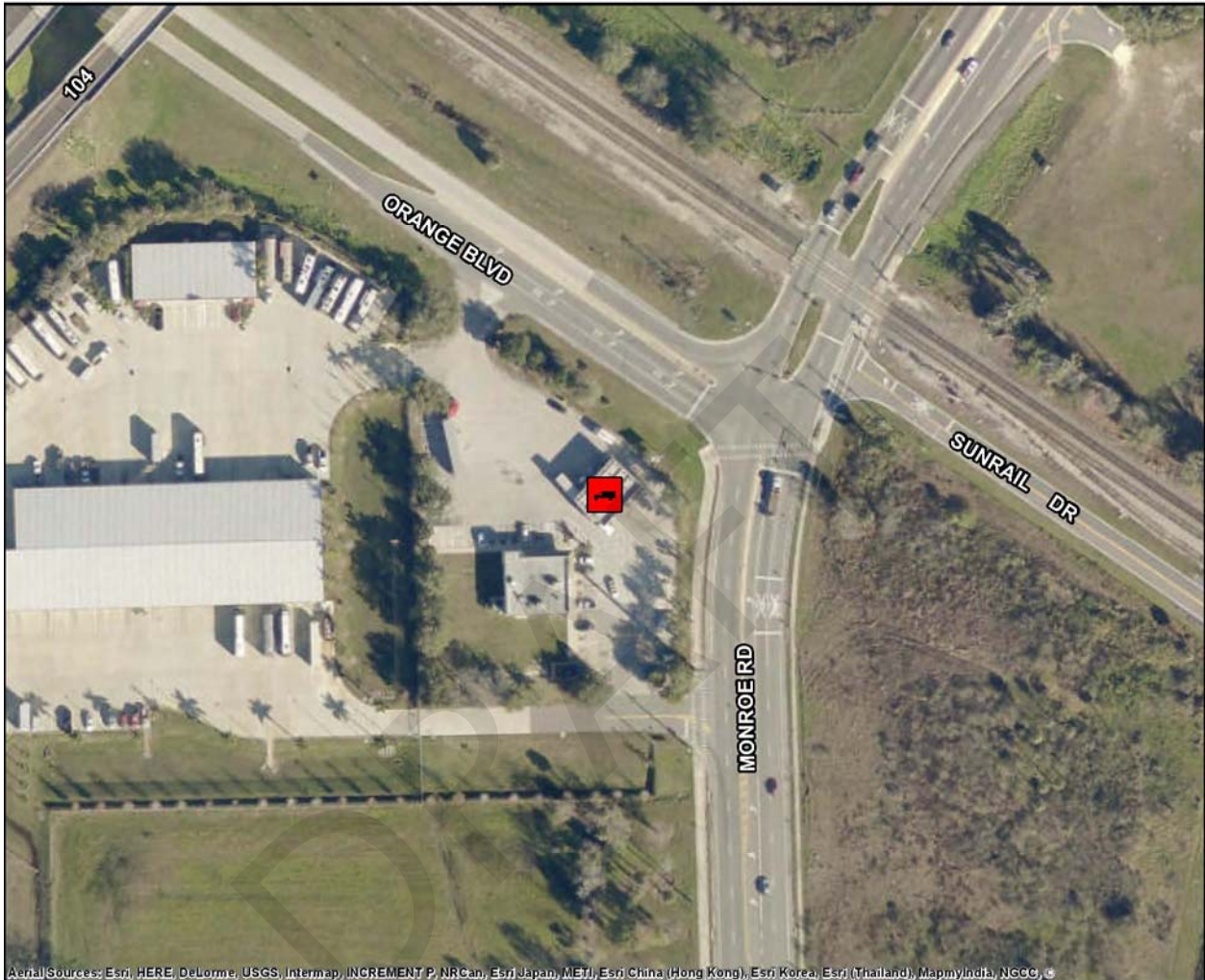
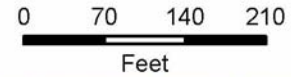
Online Map Link: <http://maps.google.com/maps?q=28.2563238182195,-81.4854651448473>

District Five Truck Parking Study

Inventory of Existing Facilities

Circle K Gas Station

4181 Orange Boulevard, Sanford, FL, 32771



Aerial Sources: Esri, HERE, DeLorme, USGS, Intermap, INCREMENT P, NRCan, Esri Japan, METI, Esri China (Hong Kong), Esri Korea, Esri (Thailand), MapmyIndia, NGCC, ©

County	Seminole
Area	Sanford
Location Type	Private
Route	Monroe Road
Facility Type	Gas Station
Hours of Operation	24 hours per day
Truck Parking Spaces	3
Amenities	Restrooms, Convenience Store, Paved Parking, Fuel Pumps



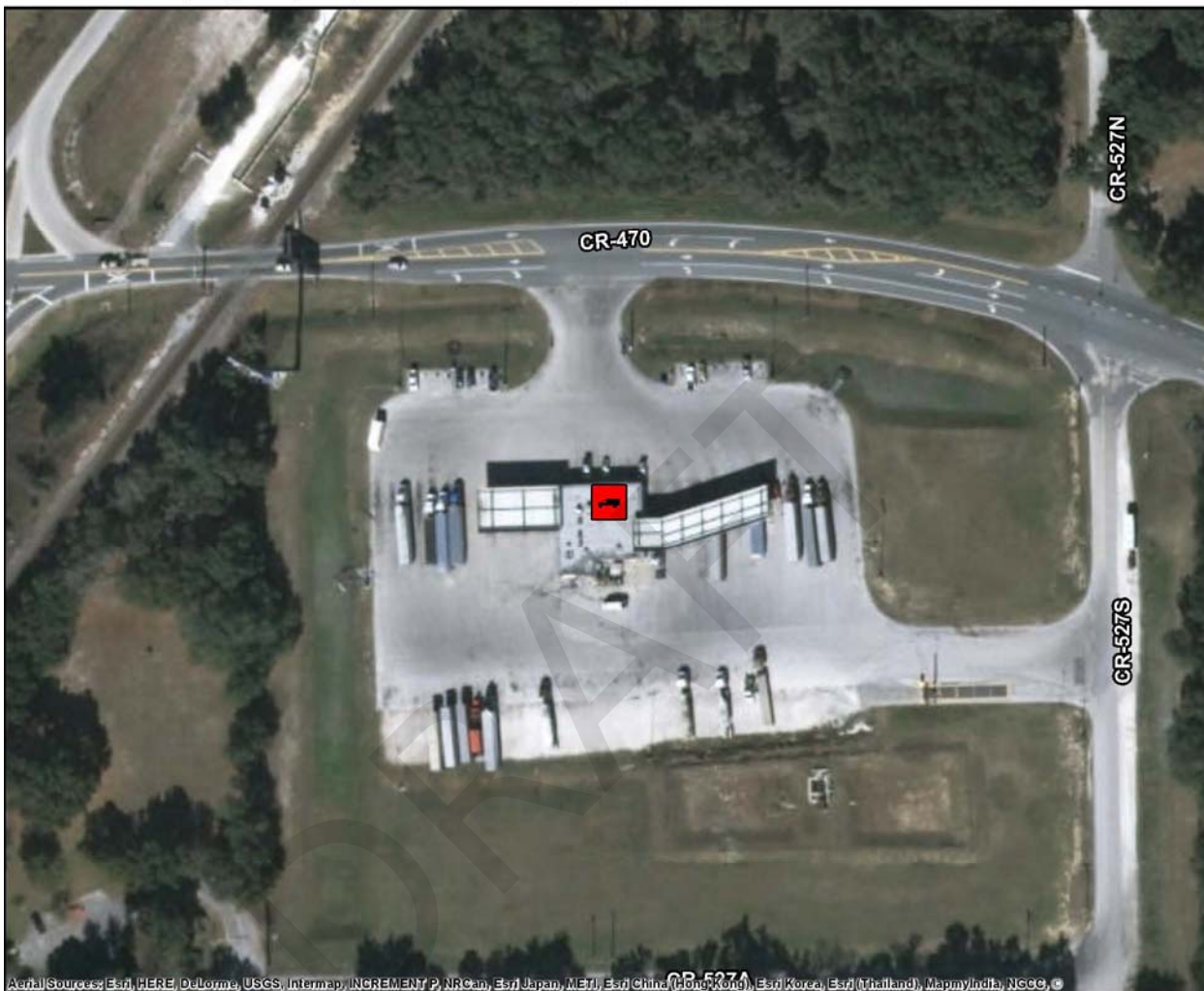
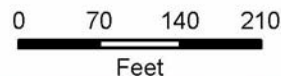
Online Map Link: <http://maps.google.com/maps?q=28.8281545004857,-81.3233235734134>

District Five Truck Parking Study

Inventory of Existing Facilities

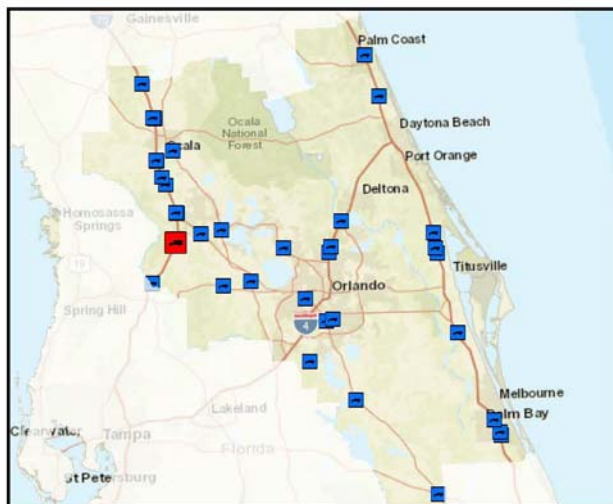
Spirit Truck Stop

293 East County Highway 470, Lake Panasoffkee, FL, 33538



Aerial Sources: Esri, HERE, DeLorme, USGS, Intermap, INCREMENT P, NRCan, Esri Japan, METI, Esri China (Hong Kong), Esri Korea, Esri (Thailand), MapmyIndia, NGCC, ©

County	Sumter
Area	Lake Panasoffkee
Location Type	Private
Route	County Road 470
Facility Type	Truck Stop
Hours of Operation	24 hours per day
Truck Parking Spaces	20
Amenities	Restrooms, CAT/Certified/Weigh Scales, Convenience/Travel/Trucker Store, Paved Parking, Fuel Pumps, Showers, Overnight Parking



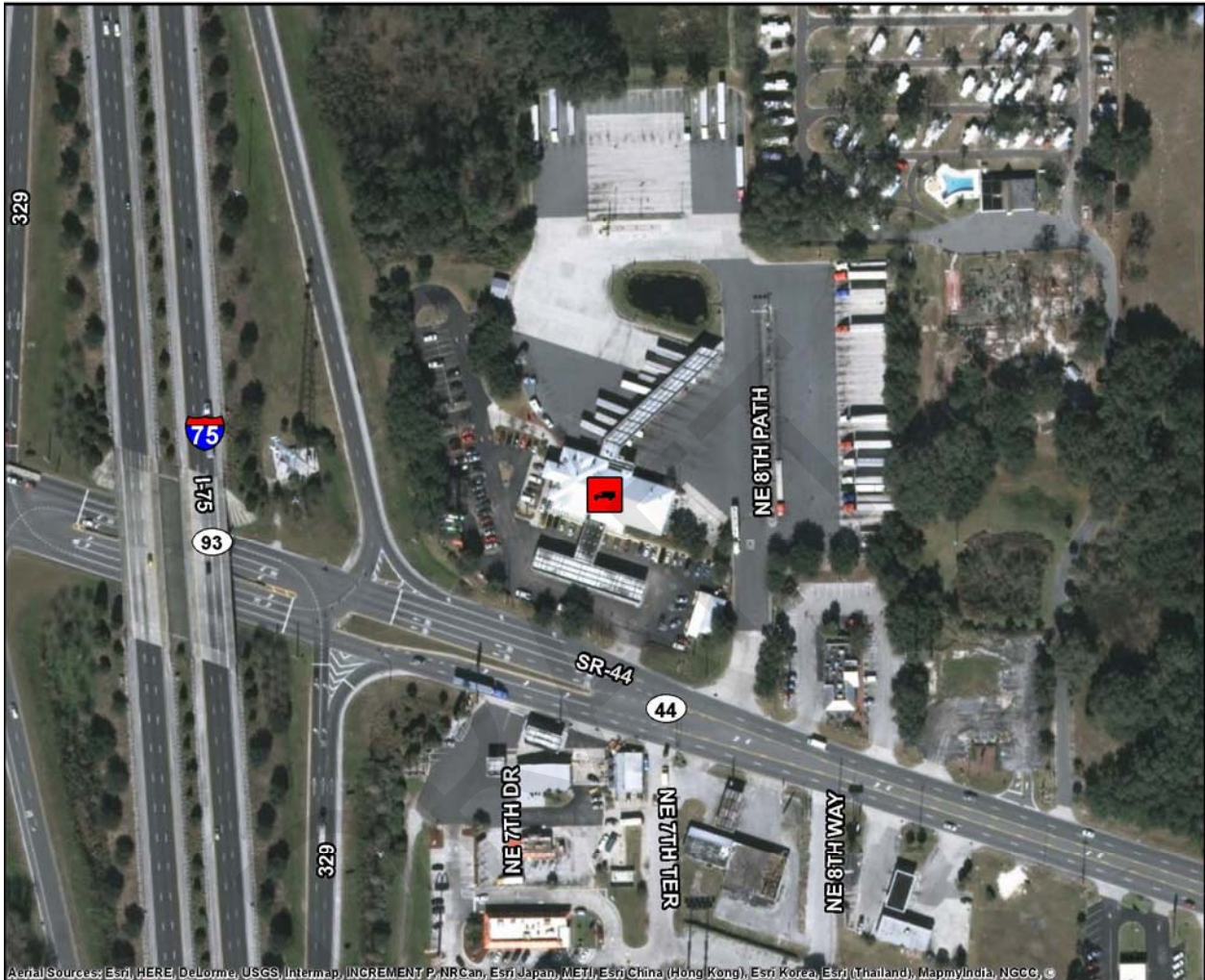
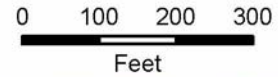
Online Map Link: <http://maps.google.com/maps?q=28.7537440285758,-82.0989754520472>

District Five Truck Parking Study

Inventory of Existing Facilities

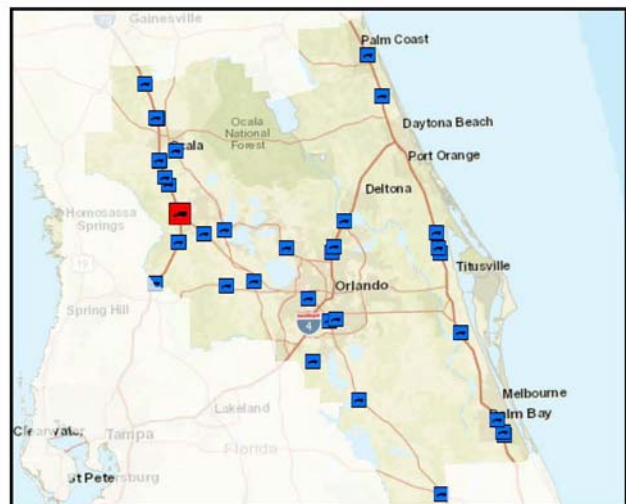
Pilot Travel Center

744 FL-44, Wildwood, FL, 34785



Aerial Sources: Esri, HERE, DeLorme, USGS, Intermap, INCREMENT P, NRCan, Esri Japan, METI, Esri China (Hong Kong), Esri Korea, Esri (Thailand), MapmyIndia, NGCC, ©

County	Sumter
Area	Wildwood
Location Type	Private
Route	FL-44
Facility Type	Truck Stop
Hours of Operation	24 hours per day
Truck Parking Spaces	60
Amenities	Restrooms, CAT/Certified/Weigh Scales, Fuel Pumps, Laundry, Lounge Area, Paved Parking, Showers, Overnight Parking



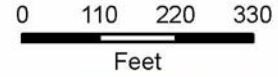
Online Map Link: <http://maps.google.com/maps?q=28.8737790599878,-82.0905807710935>

District Five Truck Parking Study

Inventory of Existing Facilities

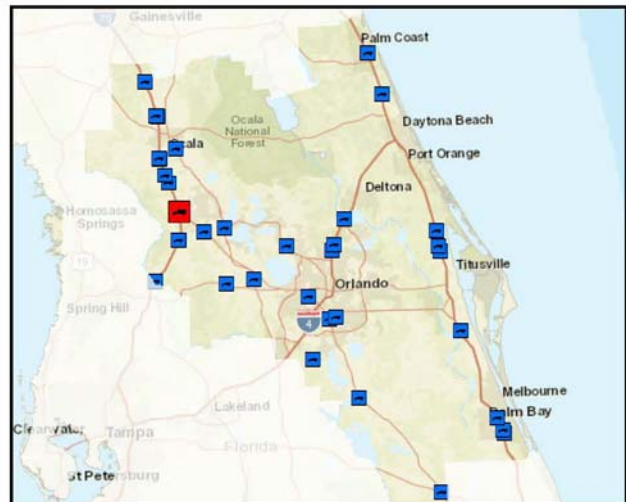
Pilot Travel Center

493 FL-44, Wildwood, FL, 34785



Aerial Sources: Esri, HERE, DeLorme, USGS, Intermap, INCREMENT P, NRCan, Esri Japan, METI, Esri China (Hong Kong), Esri Korea, Esri (Thailand), MapmyIndia, NGCC, ©

County	Sumter
Area	Wildwood
Location Type	Private
Route	FL-44
Facility Type	Truck Stop
Hours of Operation	24 hours per day
Truck Parking Spaces	112
Amenities	Restrooms, CAT/Certified/Weigh Scales, Convenience/Travel/Trucker Store, Laundry, Fuel Pumps, Showers, Restaurants, Overnight Parking



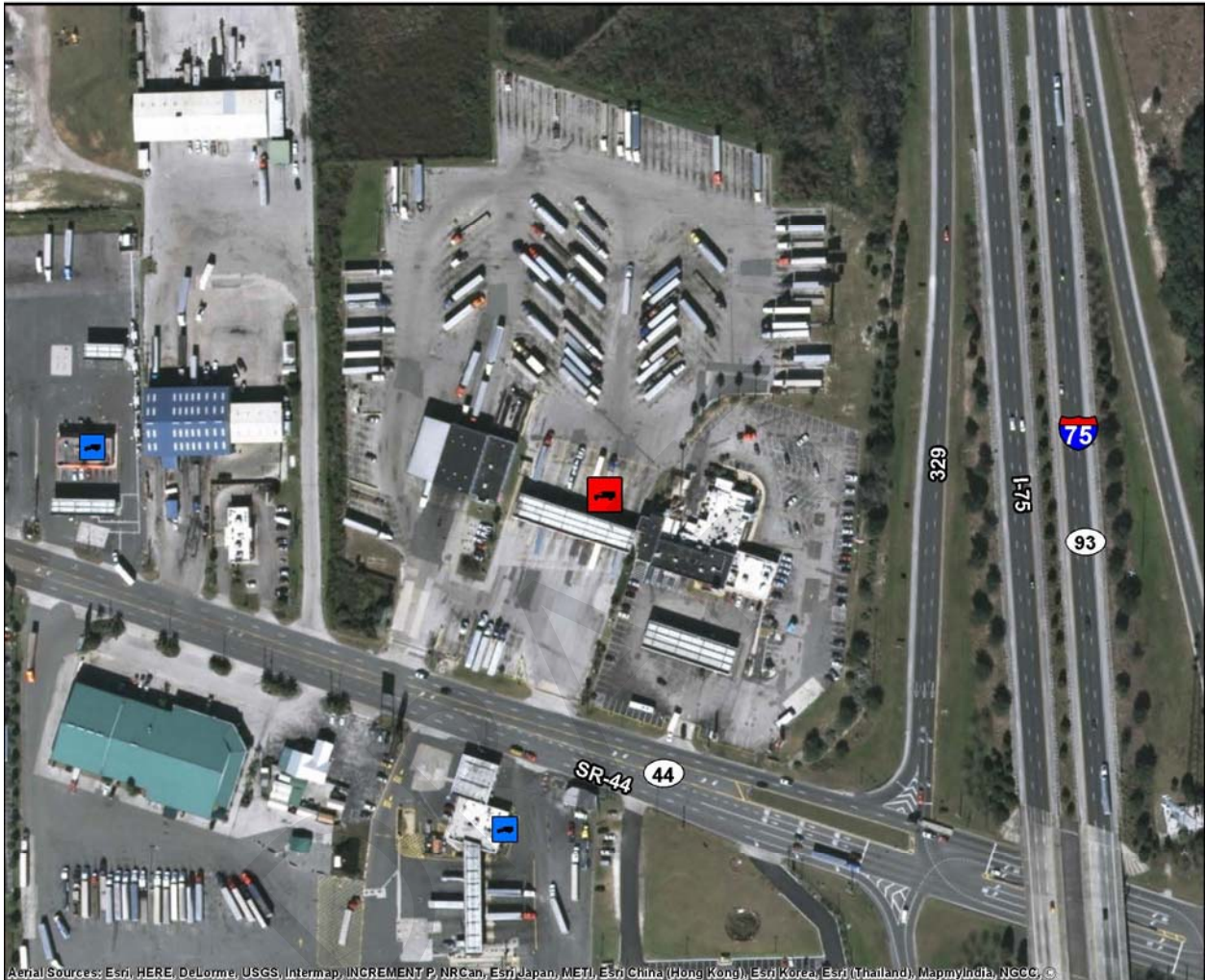
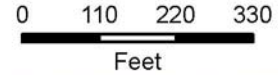
Online Map Link: <http://maps.google.com/maps?q=28.8739163388027,-82.0950558986548>

District Five Truck Parking Study

Inventory of Existing Facilities

TA Wildwood Truck Stop

566 FL-44, Wildwood, FL, 34785



Aerial Sources: Esri, HERE, DeLorme, USGS, Intermap, INCREMENT P, NRCan, Esri Japan, METI, Esri China (Hong Kong), Esri Korea, Esri (Thailand), MapmyIndia, NGCC, ©

County	Sumter
Area	Wildwood
Location Type	Private
Route	FL-44
Facility Type	Truck Stop
Hours of Operation	24 hours per day
Truck Parking Spaces	155
Amenities	Restrooms, CAT/Certified/Weigh Scales, Convenience/Travel/Trucker Store, Laundry, Paved Parking, Lounge Area, Fuel Pumps, Showers, Overnight Parking



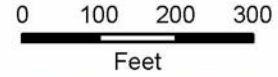
Online Map Link: <http://maps.google.com/maps?q=28.8752775207351,-82.0945657563854>

District Five Truck Parking Study

Inventory of Existing Facilities

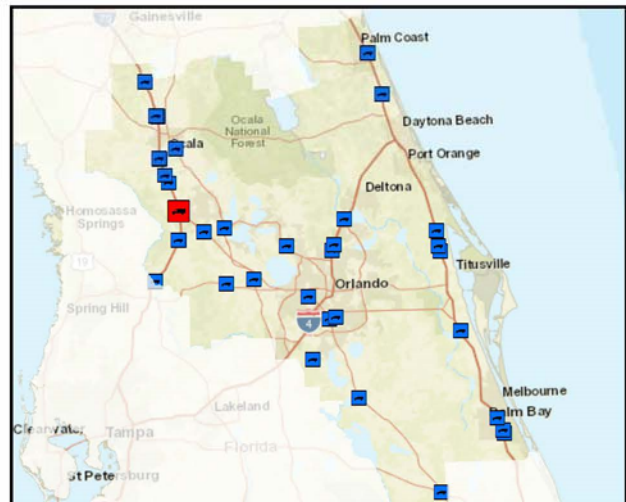
Citgo Gas Station

391 FL-44, Wildwood, FL, 34785



Aerial Sources: Esri, HERE, DeLorme, USGS, Intermap, INCREMENT P, NRCan, Esri Japan, METI, Esri China (Hong Kong), Esri Korea, Esri (Thailand), MapmyIndia, NGCC, C

County	Sumter
Area	Wildwood
Location Type	Private
Route	FL-44
Facility Type	Gas Station
Hours of Operation	24 hours per day
Truck Parking Spaces	20
Amenities	Restrooms, Convenience/Travel/Trucker Store, Fuel Pumps, Restaurants



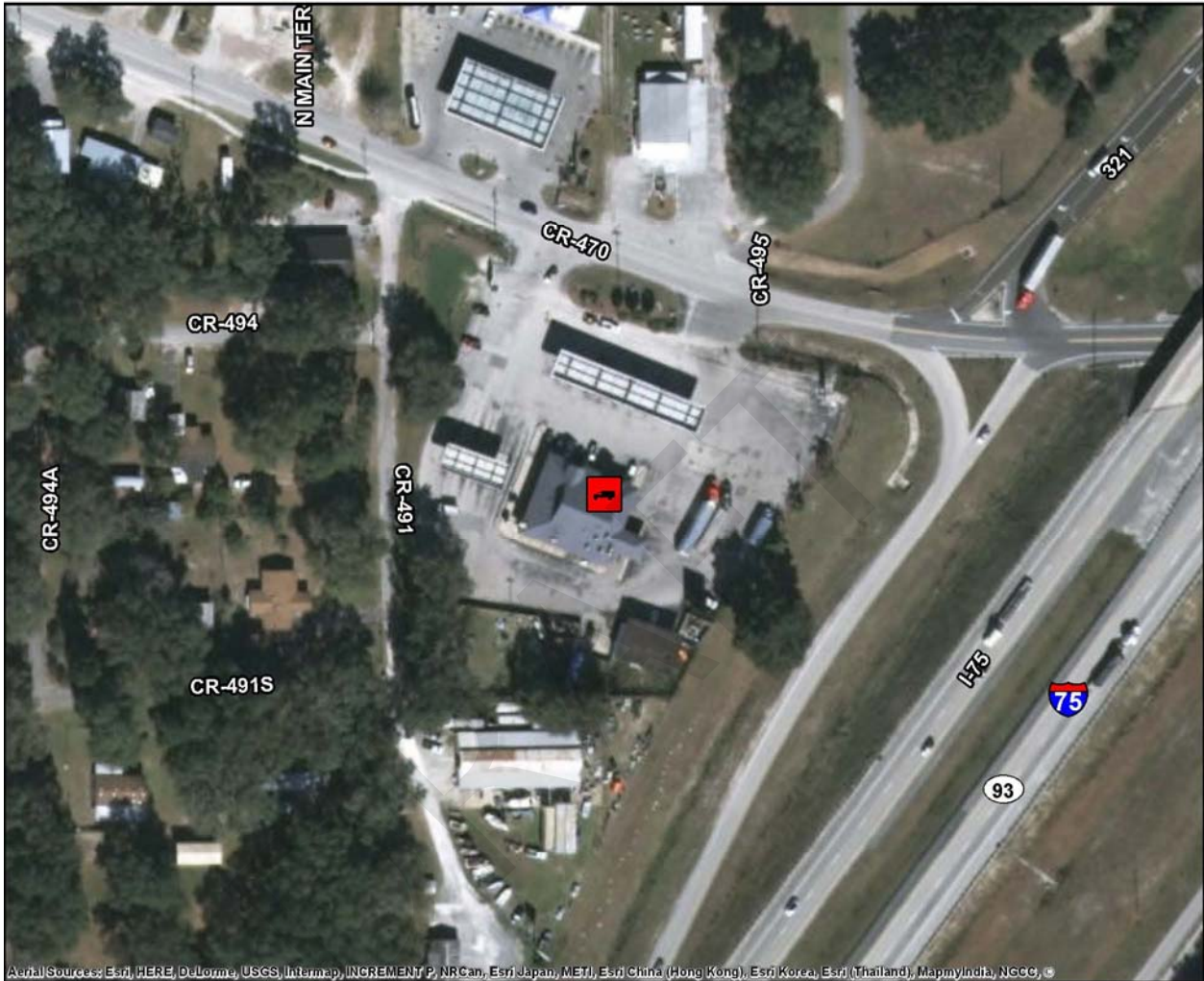
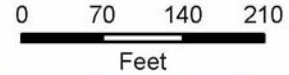
Online Map Link: <http://maps.google.com/maps?q=28.875502421245,-82.0969497821709>

District Five Truck Parking Study

Inventory of Existing Facilities

Mobil Gas Station

43 North County Road 470, Lake Panasoffkee, FL, 33538



Aerial Sources: Esri, HERE, DeLorme, USGS, Intermap, INCREMENT P, NRCan, Esri Japan, METI, Esri China (Hong Kong), Esri Korea, Esri (Thailand), MapmyIndia, NGCC, ©

County	Sumter
Area	Lake Panasoffkee
Location Type	Private
Route	C470
Facility Type	Gas Station
Hours of Operation	5am-11pm
Truck Parking Spaces	2
Amenities	Restrooms, Convenience/Travel/Trucker Store, Fuel Pumps, Restaurants



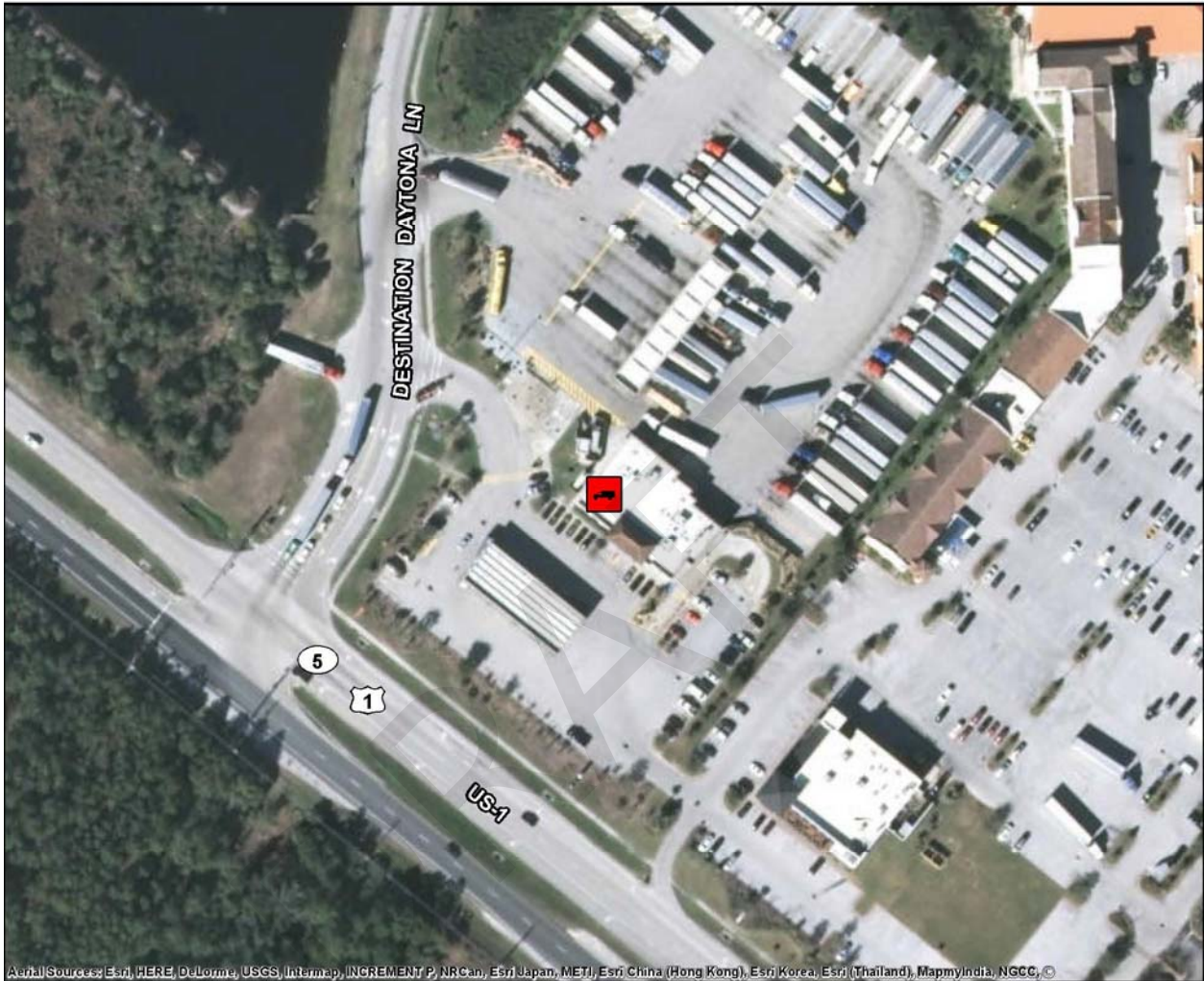
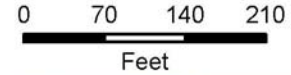
Online Map Link: <http://maps.google.com/maps?q=28.7539323373963,-82.1034718577859>

District Five Truck Parking Study

Inventory of Existing Facilities

Love's Travel Center

1657 US-1, Ormond Beach, FL, 32174



Aerial Sources: Esri, HERE, DeLorme, USGS, Intermap, INCREMENT P, NRCan, Esri Japan, METI, Esri China (Hong Kong), Esri Korea, Esri (Thailand), MapmyIndia, NGCC, ©

County	Volusia
Area	Ormond Beach
Location Type	Private
Route	US 1
Facility Type	Truck Stop
Hours of Operation	24 hours per day
Truck Parking Spaces	107
Amenities	Restrooms, CAT/Certified/Weigh Scales, Convenience/Travel/Trucker Store, Lighting, Laundry, Fuel Pumps, Lounge Area, Showers, Restaurants, Overnight Parking



Online Map Link: <http://maps.google.com/maps?q=29.3396876213065,-81.1347076458212>