

**FDOT**



## Rail and Transit



Regional Listening Sessions

**STRATEGIC  
DEVELOPMENT**



# PURPOSE



Gather input on how rail and transit should function as part of an integrated, statewide and regional transportation system



Gather input on the roles and responsibilities of FDOT and other partners



Strengthen collaboration to advance rail and transit priorities





# AGENDA

- 01** Overview Presentation
- 02** Rail & Transit System Engagement Stations
- 03** Roles, Responsibilities & Priorities Discussion
- 04** Next Steps



## DISCUSSION GUIDELINES



**Your feedback  
is important  
to us**

**Use  
Mentimeter  
platform to  
respond to  
poll questions**

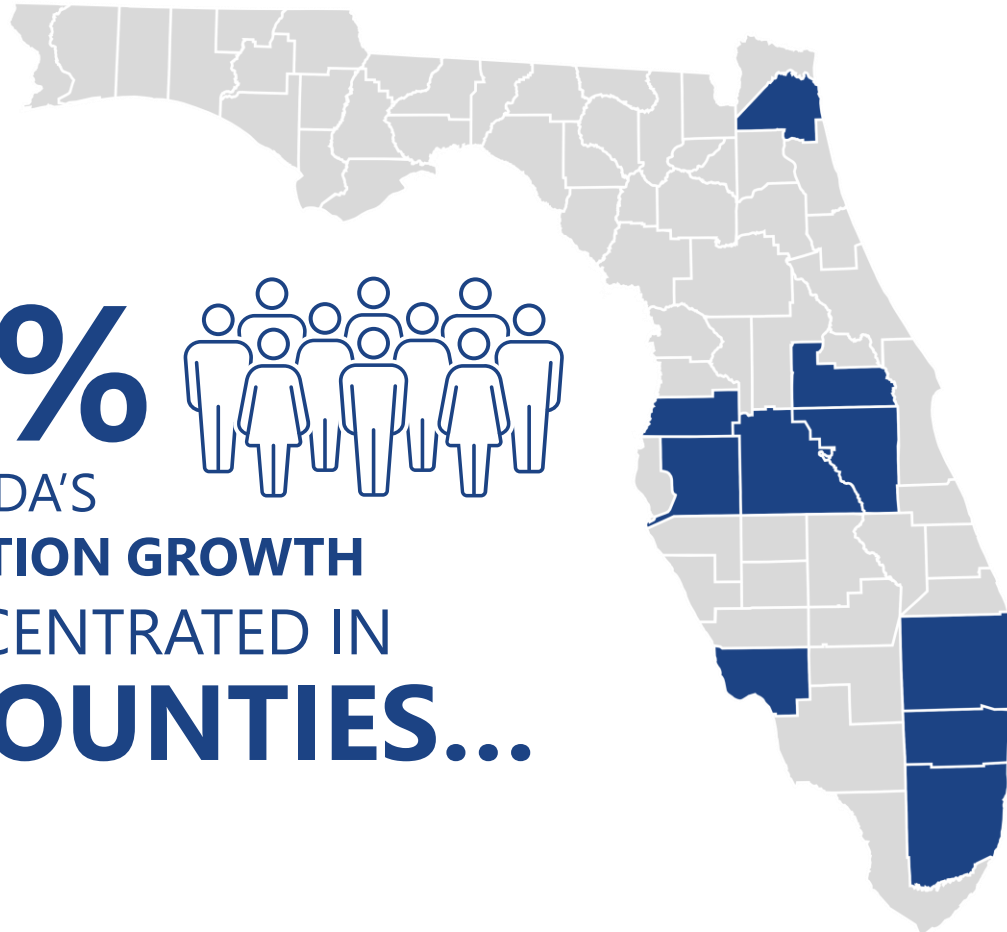
**Fill out  
comment  
forms for  
additional  
feedback**

**We are  
taking notes**

# POPULATION

## FLORIDA'S FASTEST GROWING COUNTIES

**59%**  
OF FLORIDA'S  
**POPULATION GROWTH**  
IS CONCENTRATED IN  
**10 COUNTIES...**

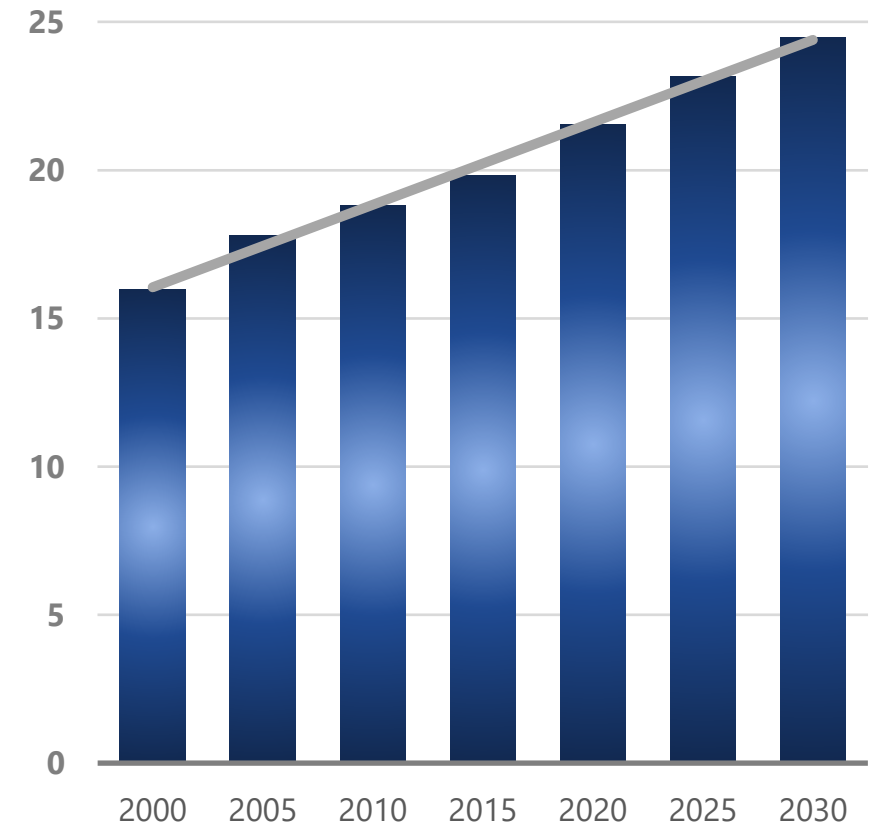


Source: Bureau of Economic and Business Research.

Powered by Bing  
© GeoNames, Microsoft, TomTom

## FLORIDA POPULATION GROWTH

MILLIONS

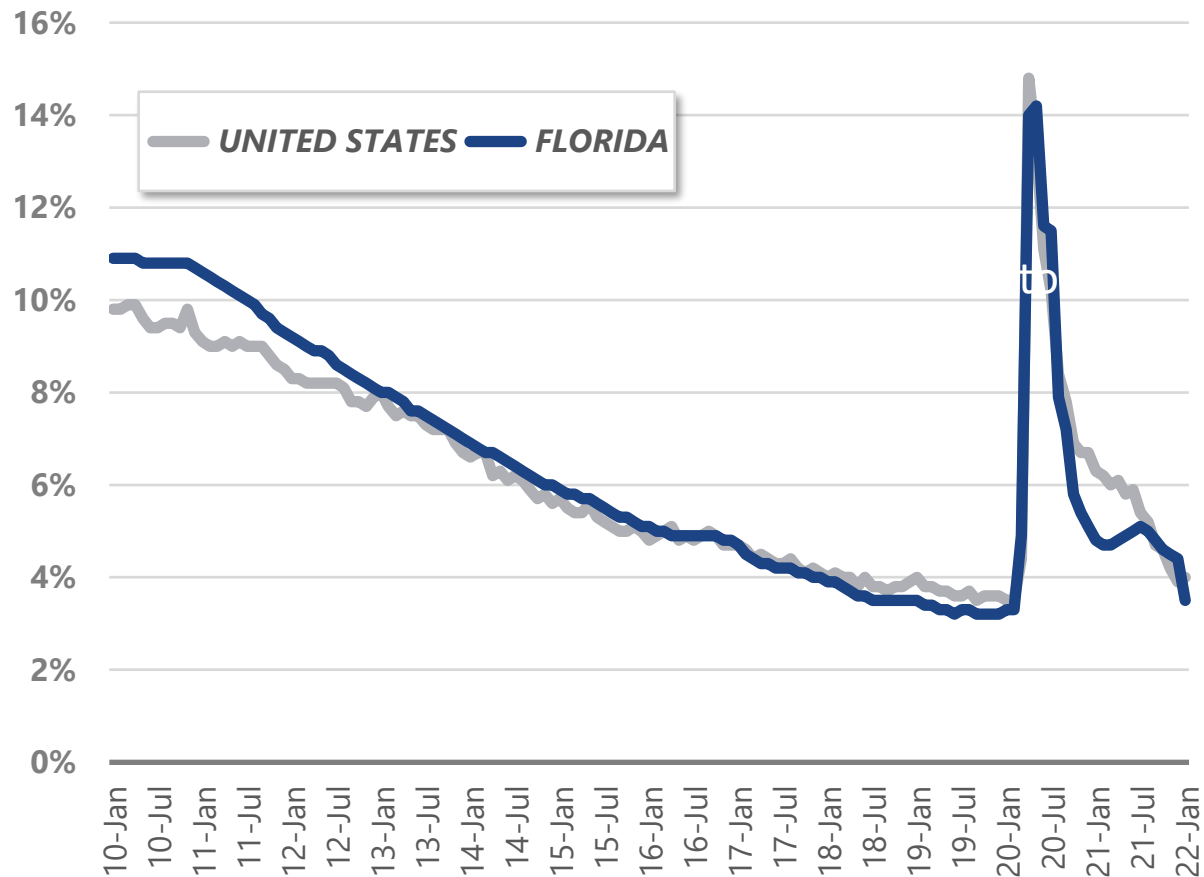


Source: Bureau of Economic and Business Research.

# ECONOMY

## UNEMPLOYMENT RATES – FLORIDA AND U.S.

January 2010 through August 2021



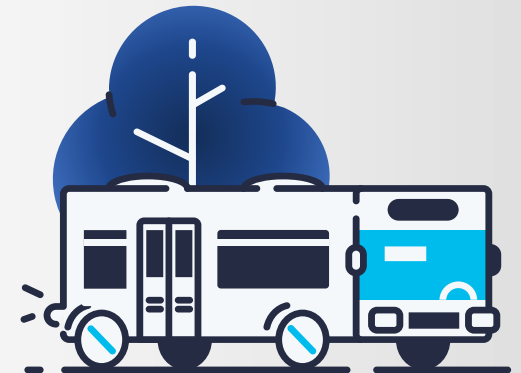
Source: U.S. Department of Labor.



**383,000  
JOBS**

WITHIN A  
**30-MINUTE  
AUTOMOBILE TRIP**

**7,400  
JOBS**  
WITHIN A  
**30-MINUTE  
TRANSIT TRIP**



Source: FDOT Sourcebook.

# MOBILITY



**TRUCK ACTIVITY**  
WAS  
**7%**  
**HIGHER**  
**IN OCTOBER 2021**

*Source: Florida Department of Transportation*



**TRANSIT RIDERSHIP**  
IS  
**40%**  
**LOWER**  
**THAN 2019**

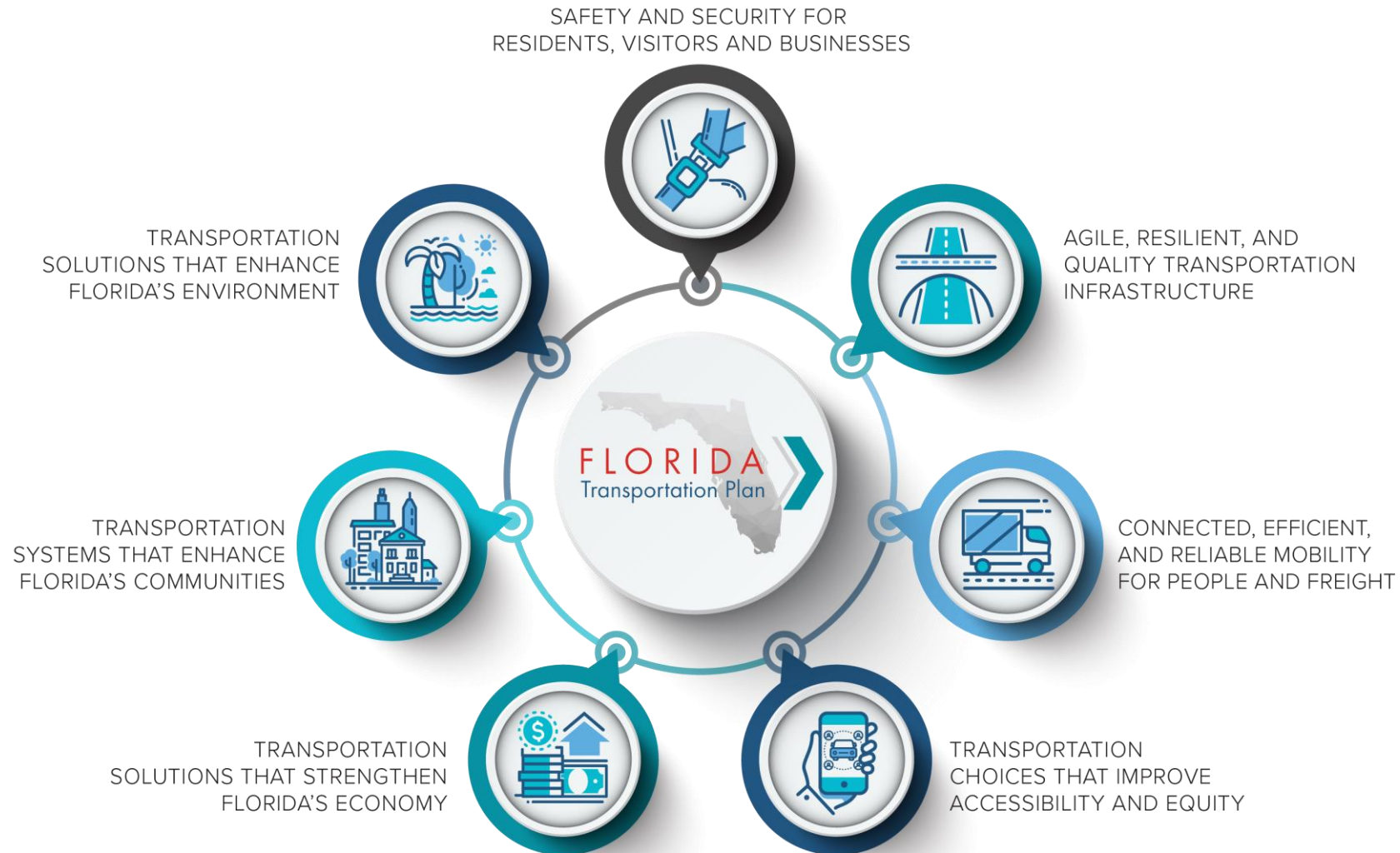
*Source: Florida Department of Transportation*



**AIR TRAVEL**  
HAS  
**REMAINED**  
**FLAT**

*Source: Florida Department of Transportation*

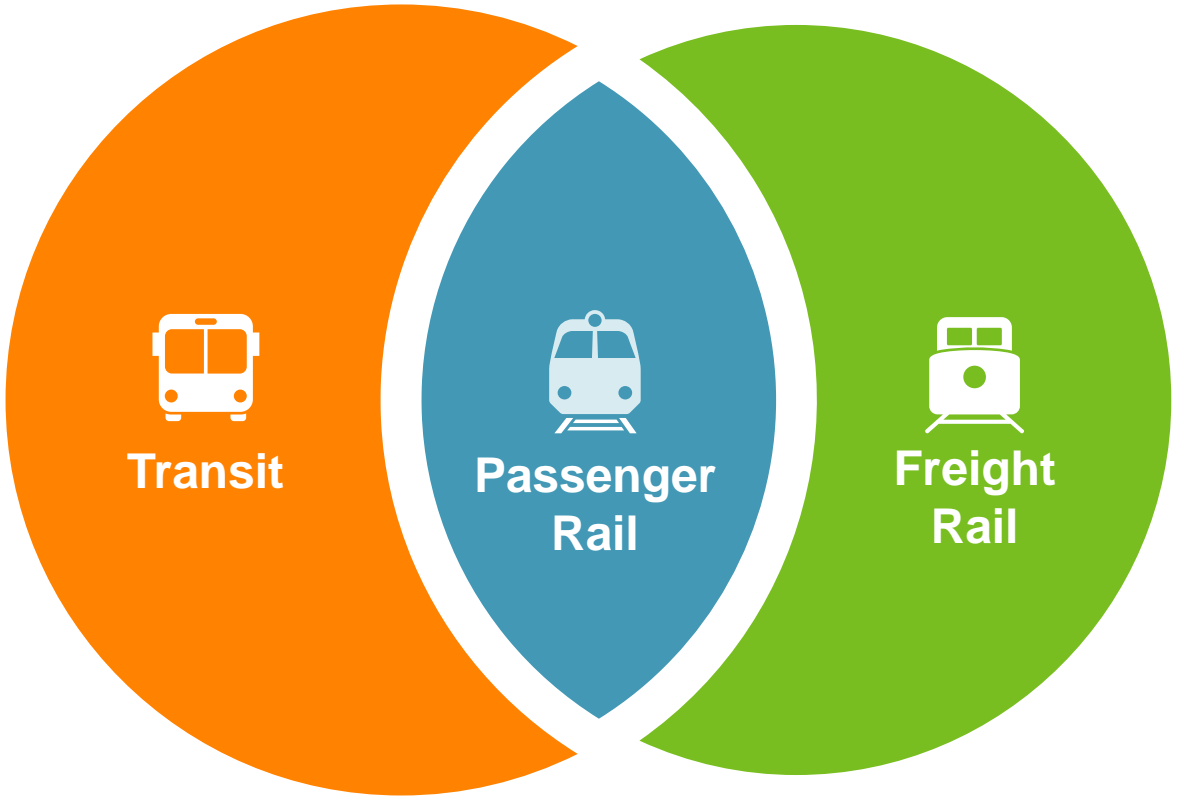
# FLORIDA'S TRANSPORTATION VISION







# MULTIMODAL CONNECTIVITY



# TRANSIT



Urban



Rural



Intercity

217.6 Million passenger trips (2019)

# INDUSTRY TRENDS



Declining Ridership



New Mobility



Mobility as a Service and  
Advancing Technologies 11

# POTENTIAL TRANSIT STRATEGIES



Include High-Capacity Premium Transit in Integrated Mobility Corridors



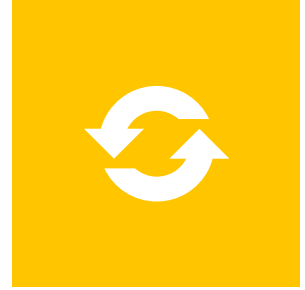
Integrate Technology and Emerging Mobility



Encourage Regionalism



Enhance Access to Activity Centers, Facilities and Services



Encourage Co-location with Other Modes



# PASSENGER RAIL



Intercity



Regional

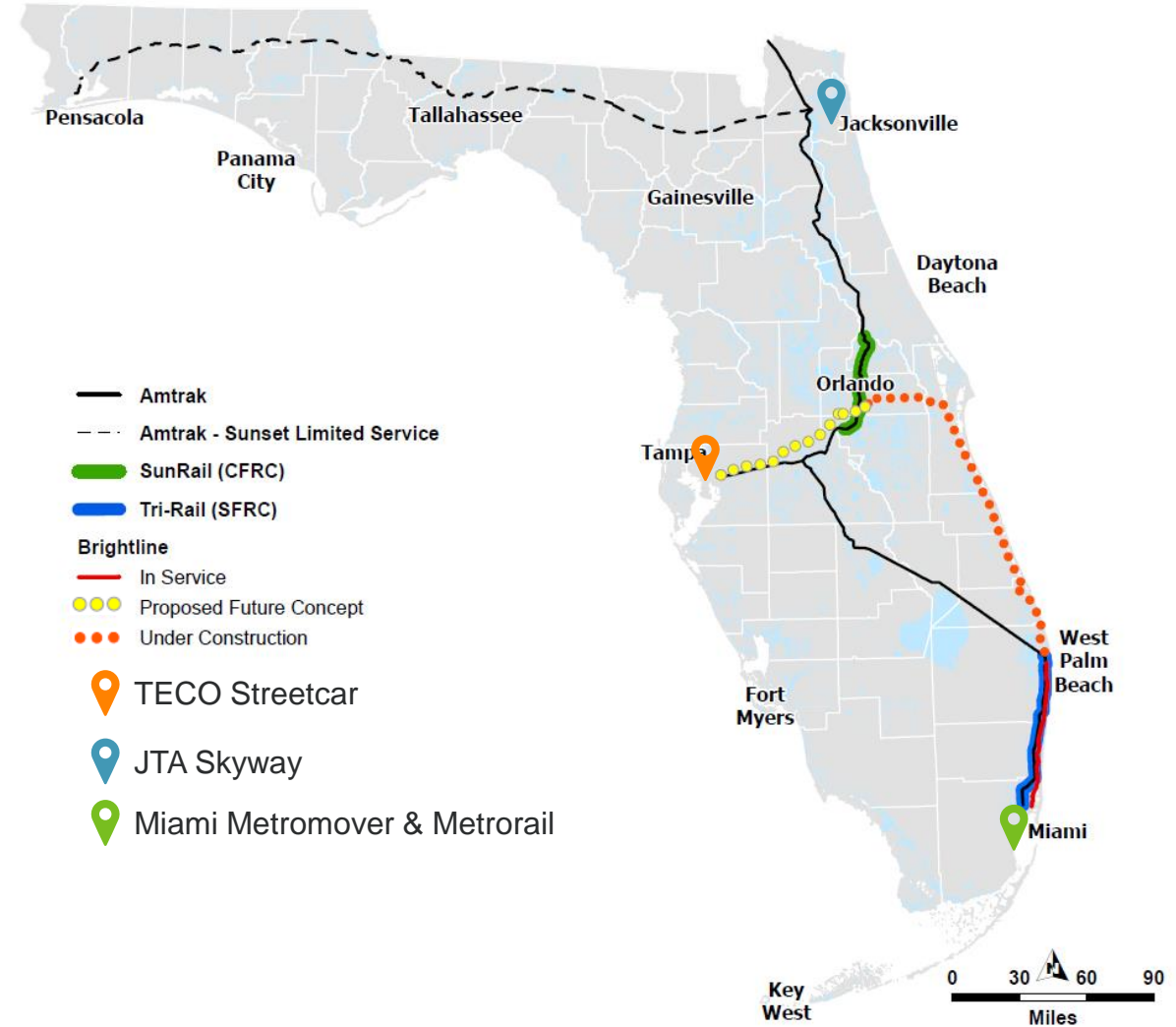


Urban

## Providers



brightline



7.8 Million Rail Passengers (2019)

## • FDOT

- Managing the PD&E Study
- Environmental analysis of Commuter Rail on FEC Railroad
- Operational analysis of Commuter Rail on FEC Railroad
- Aventura to Deerfield Beach(27 miles)
- **Technical Recommendations for Station Locations**
- **Alternatives Analysis for the New River Crossing**
- East/west traffic analysis for crossings and stations
- Incorporate the necessary rail, signaling, safety, communication as well as passenger stations and amenities
- Maintain eligibility for federal funding
- Public engagement & stakeholder coordination

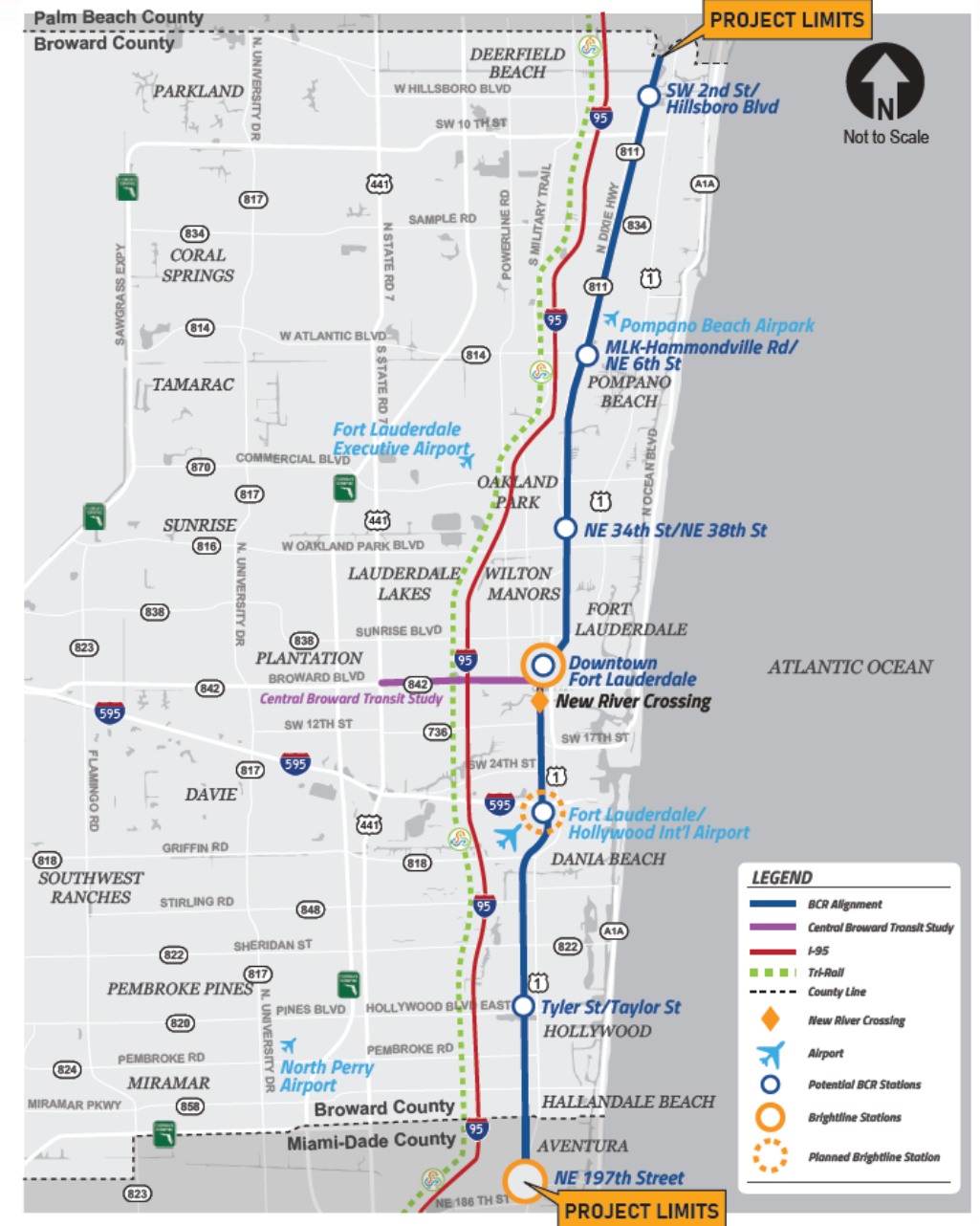
## • Broward County

- Stakeholder outreach and consensus building
- Track access, design/construction and O&M agreements
- Identify local share of capital costs and annual O&M funds
- **Draft financial plan**



# Project Limits and Study Area

- ❑ From Aventura in Miami-Dade County to Deerfield Beach in Broward County
- ❑ 27 Miles along the FEC Railroad
- ❑ Technical recommendations have been made for six station locations in Broward County
  - Deerfield Beach (south of Hillsboro Blvd.)
  - Pompano Beach (north of Atlantic Blvd.)
  - Oakland Park (north of Oakland Park Blvd.)
  - Ft. Lauderdale (Downtown Brightline Station)
  - Airport Station (joint station with Brightline)
  - Hollywood (north of Hollywood Blvd.)
- ❑ 4 Alternatives under consideration to cross the New River
- ❑ BCR will continue commuter rail connecting Miami Dade County's Northeast Corridor Project (SMART PLAN) – Starting at Aventura
- ❑ Palm Beach County is expected to conduct a study in the future to extend service to Jupiter. The three potential projects stemmed from the Coastal Link Study.



## ECONOMIC & RESIDENTIAL GROWTH



- ❑ Transit Oriented Development (TOD)
  - Increased business investment
  - Affordable housing incentives
- ❑ Mixed land uses to support the increase in residential and business development

## ENHANCE QUALITY OF LIFE



- ❑ Increased mobility and transportation choices
- ❑ Greater access to employment, education, and essential services

## TRANSIT INCENTIVES TO THE PUBLIC



- ❑ Reduce travel times and automobile dependence
- ❑ Save money on gas, parking, and car maintenance/repairs

## ENVIRONMENTAL



- ❑ Cleaner air by reducing traffic congestion (reduced vehicle emissions)

## COMMUTER RAIL BENEFITS EMPLOYERS



- ❑ Access to a wider pool of talent
- ❑ Dependable and reliable transit service may boost and enhance productivity



- ❑ Shared-use corridor with FEC freight trains and intercity passenger trains
- ❑ Florida East Coast Railway, L.L.C. owns the FECR right of way and operates freight service
- ❑ Brightline operates inter-city passenger rail trains via a passenger easement in the corridor



# Typical Commuter Rail Platform



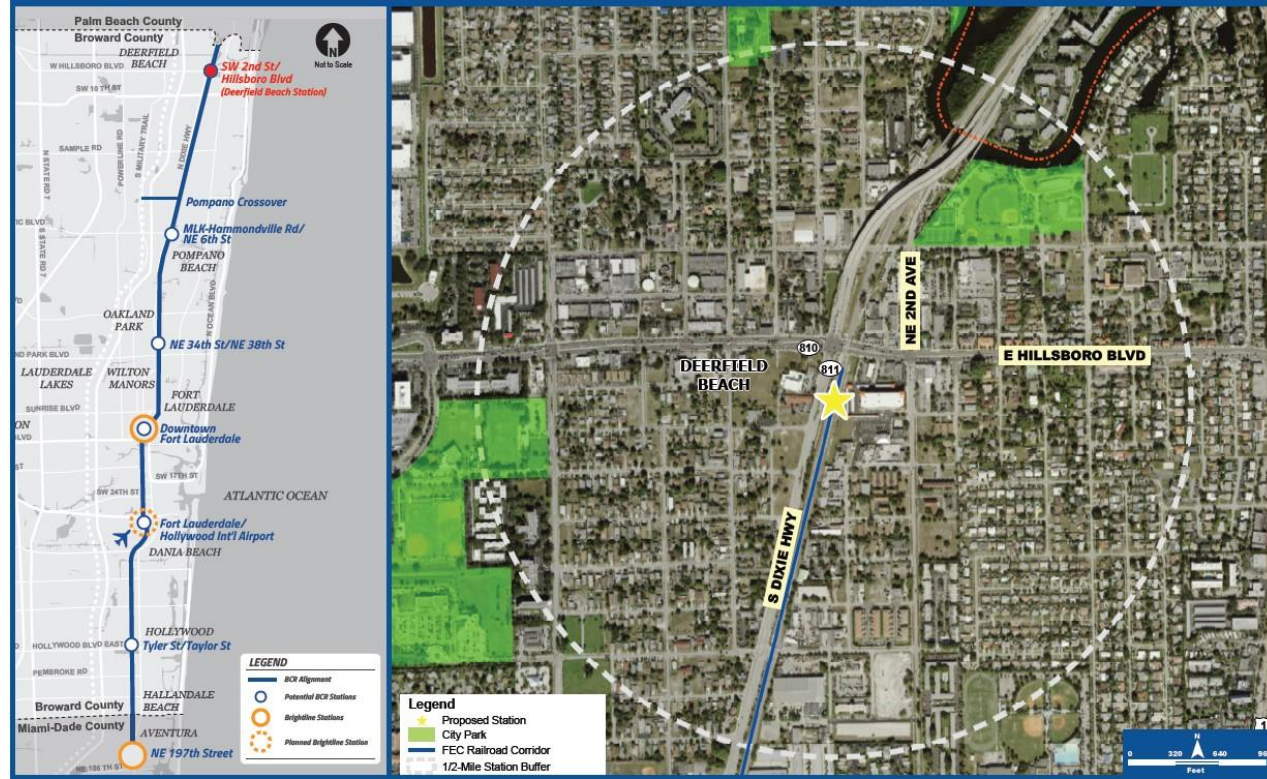
Commuter Type Station (note platform adjacent to mainline track)  
BCR will most likely have sidings

- Approx. 17-foot width
- Approx. 500-foot length to accommodate train sets of 3-4 cars
- Additional tracks/sidings required per FECR to avoid freight running adjacent to platforms
- Pedestrian bridges are not anticipated but would be evaluated

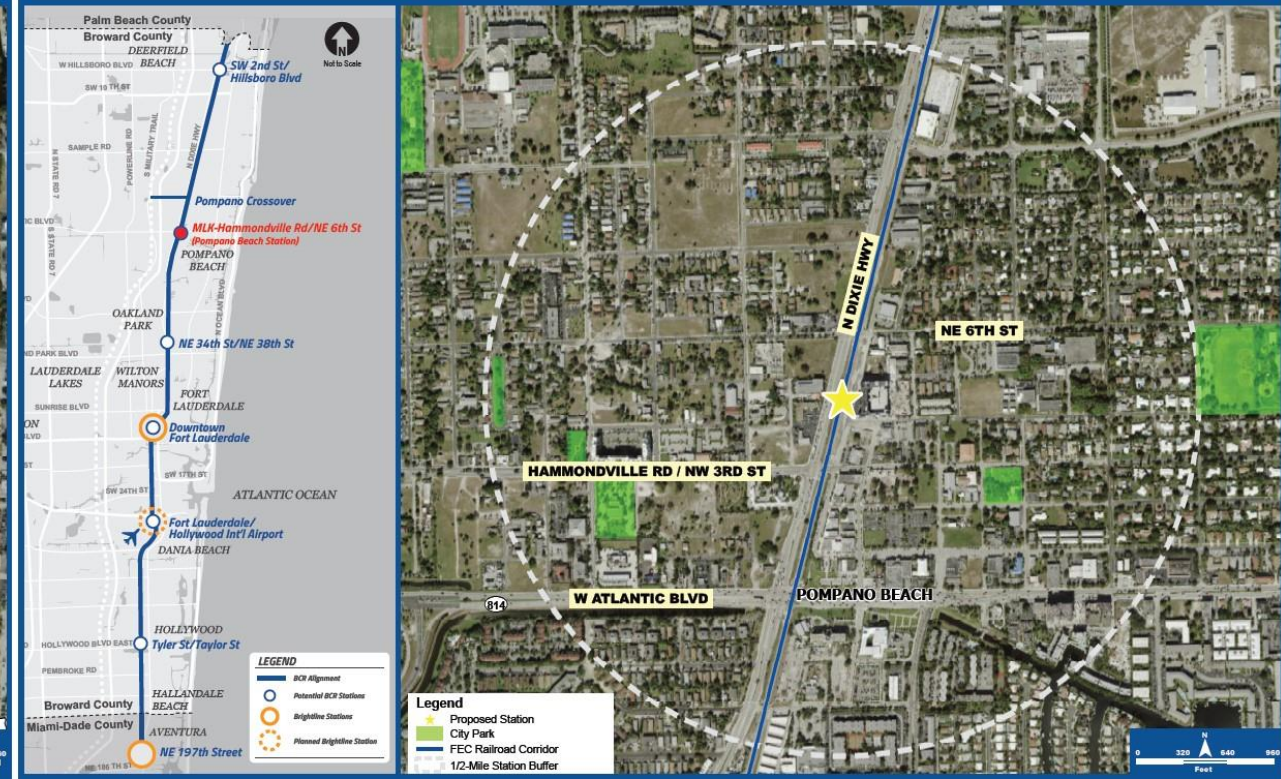


Brightline Station includes security and lobby areas

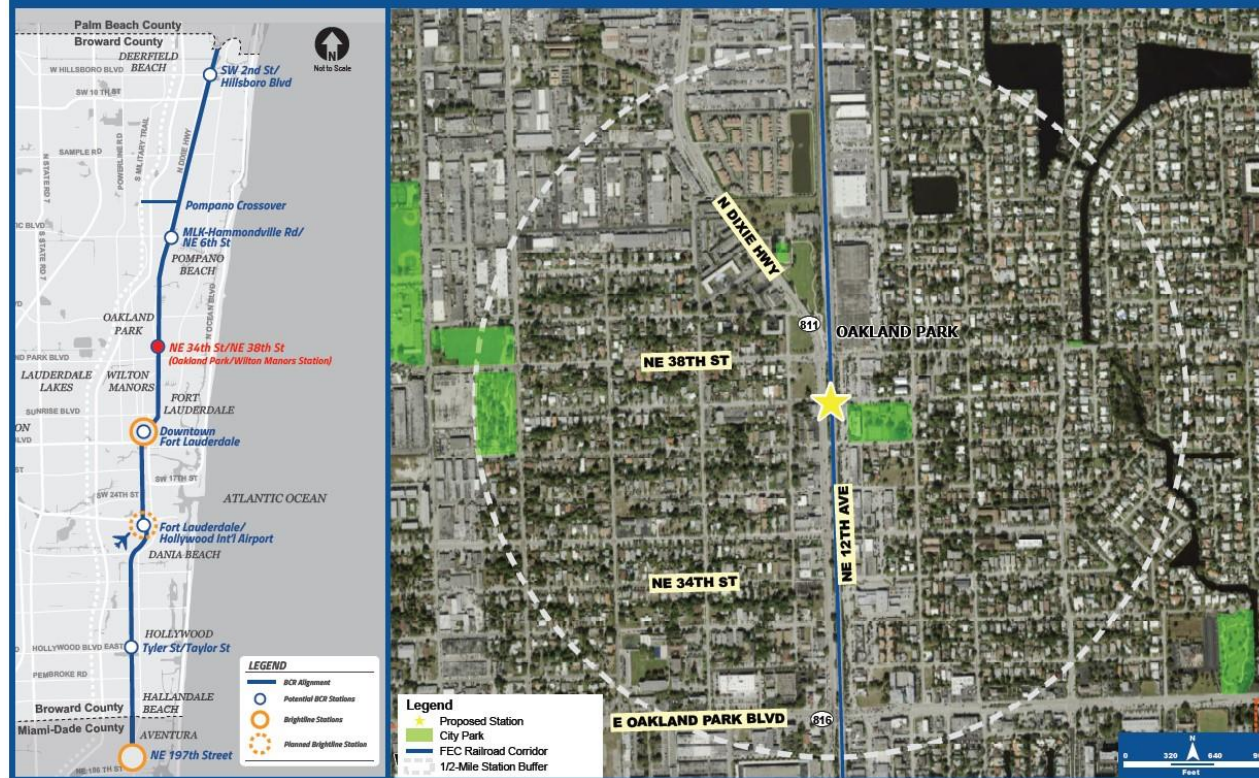
### DEERFIELD BEACH STATION



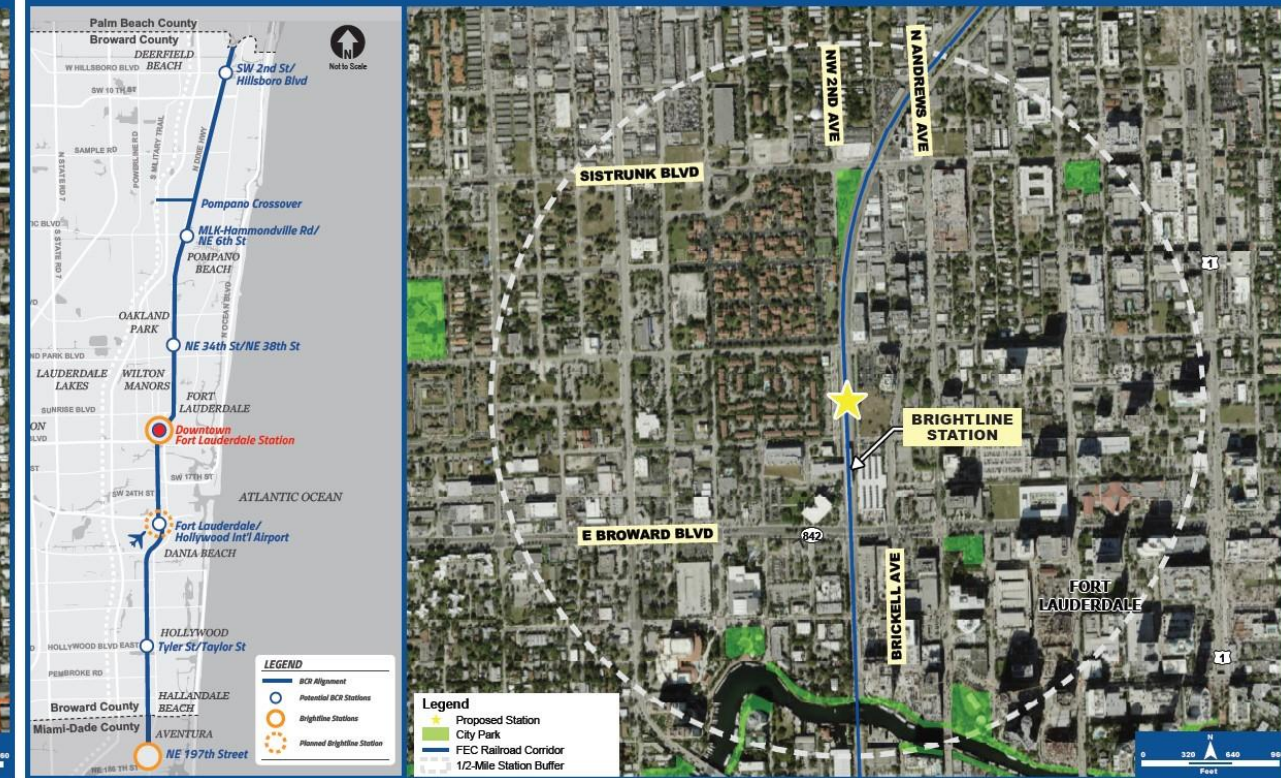
### POMPANO BEACH STATION



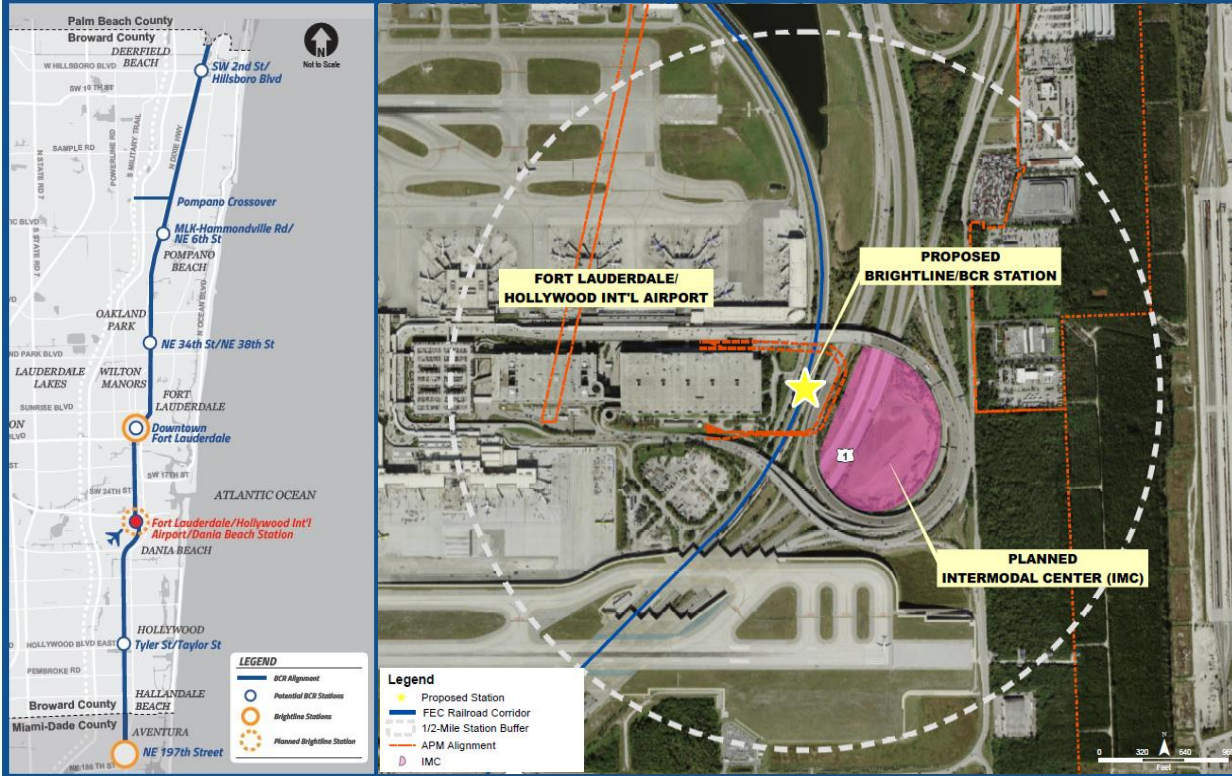
## OAKLAND PARK/WILTON MANORS STATION



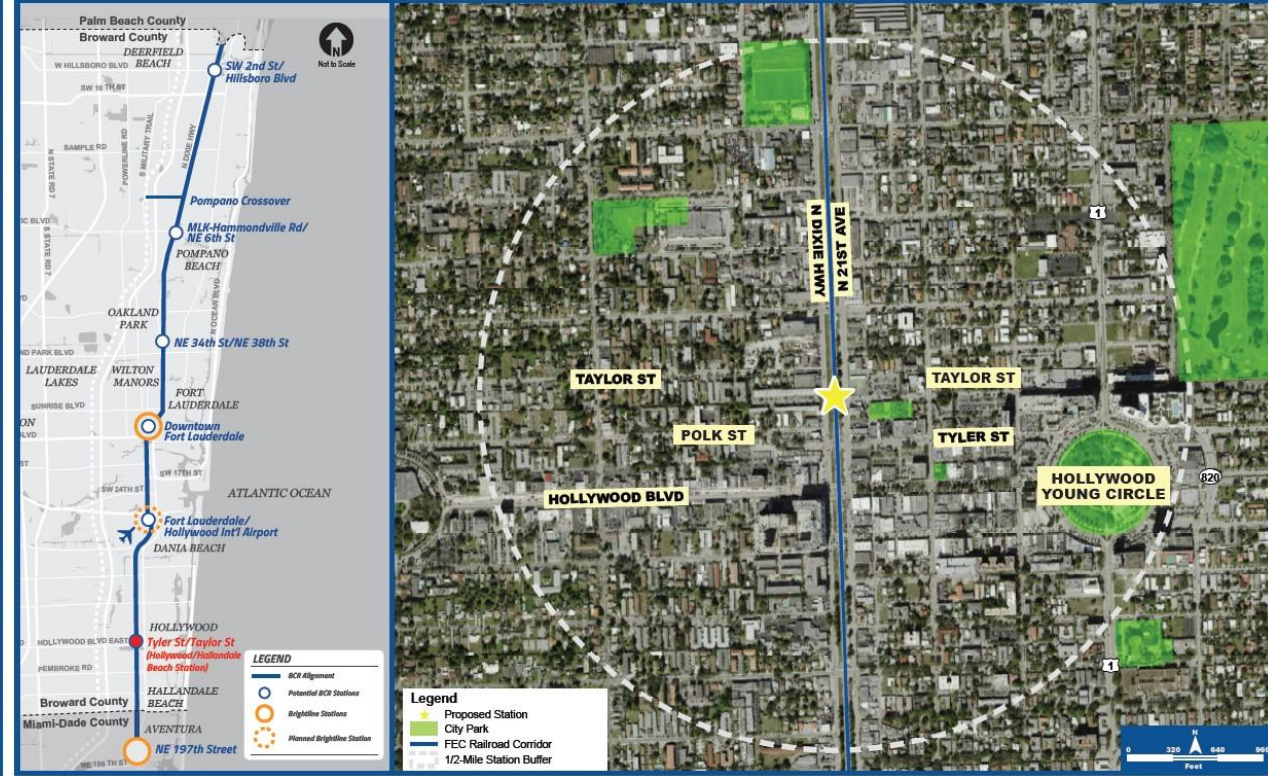
## DOWNTOWN FORT LAUDERDALE STATION



## FORT LAUDERDALE/HOLLYWOOD INT'L AIRPORT/DANIA BEACH STATION



## HOLLYWOOD/HALLANDALE BEACH STATION





## UPCOMING EVENTS

- Extended outreach to interested parties (Spring 2022)
- Broward County Commission Decision/Direction for an LPA (May/June 2022)
- Entry to FTA Project Development (Summer/Fall 2022)
- Public Hearing – Spring 2023
- Broward Metropolitan Planning Organization Adopts LPA – Spring 2023
- Location and Design Concept Acceptance (PD&E Study Approval) Summer 2023

- Preliminary Engineering
  - Alternative's evaluation to enhance, avoid, minimize, or mitigate potential environmental impacts
  - Coordination with stakeholders, federal, state, and local agencies
  - Engage the public in the alternative's evaluation process
  - Recommendation of a Locally Preferred Alternative that satisfies the Federal Transit Administration NEPA\* process with evaluation of the following:
    - ⇒Cost Feasibility
    - ⇒Engineering
    - ⇒Environmental/Social
    - ⇒Public Involvement
- \*NEPA: National Environmental Policy Act



MIAMI-DADE  
**SMART  
PLAN**

**TPO**  
Miami-Dade Transportation  
Planning Organization

**MIAMI-DADE  
COUNTY**

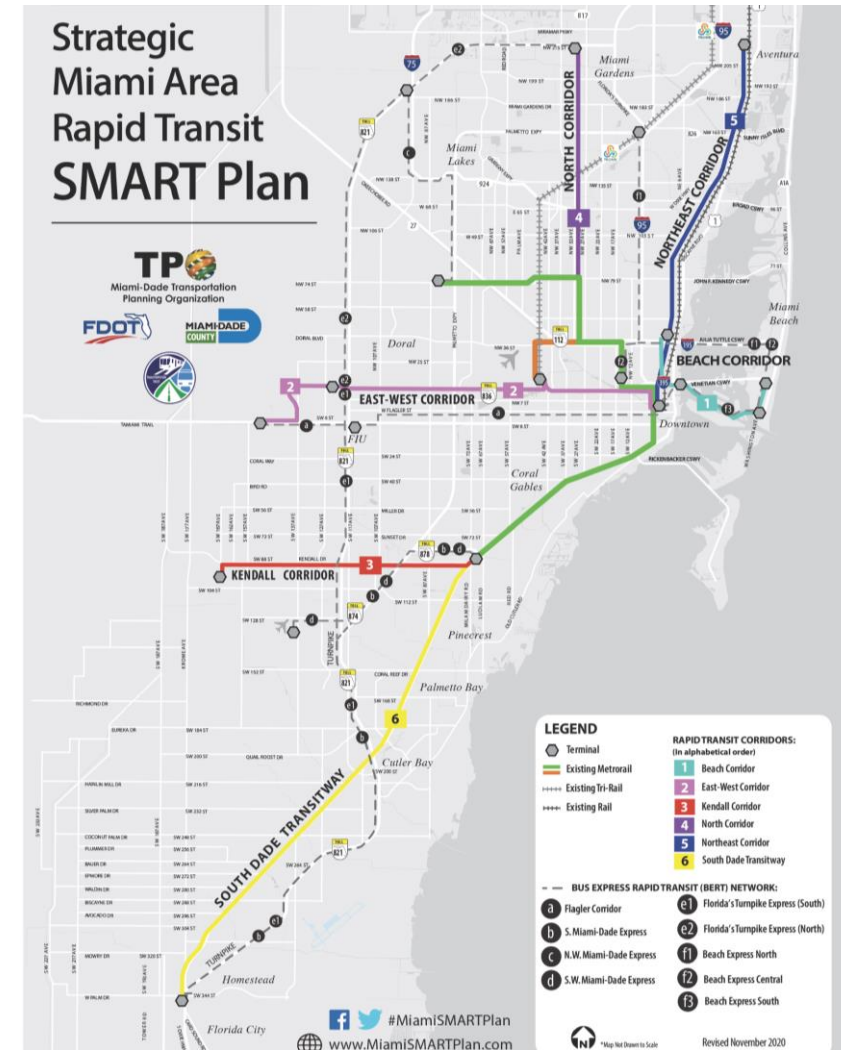


## Overview of Project

The Northeast Corridor (NE Corridor) study is being led by Miami-Dade County Department of Transportation and Public Works, extending from Downtown Miami to the City of Aventura along the existing Florida East Coast (FEC) railway for an approximate length of 14.5 miles.

- PD&E by Miami-Dade Department of Transportation & Public Works (DTPW)
- Land Use & Visioning by the Miami-Dade TPO

For more information on this project, please go to [www.miamidadetpo.org/smartplan.asp](http://www.miamidadetpo.org/smartplan.asp) and click on the Northeast Corridor updates/links.



# INDUSTRY TRENDS



New Federal Funding



Sustainability Focus



Safe and Reliable Mobility



# POTENTIAL PASSENGER RAIL STRATEGIES



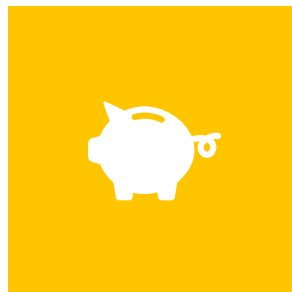
Create Intercity Hybrid Model



Preserve Corridors



Lead Regional Efforts



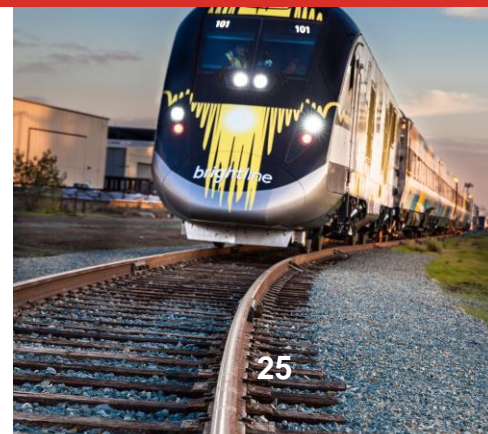
Ensure Regional/ Local Funding Mechanisms



Assistance to Local Partners



Balance Needs of All Users



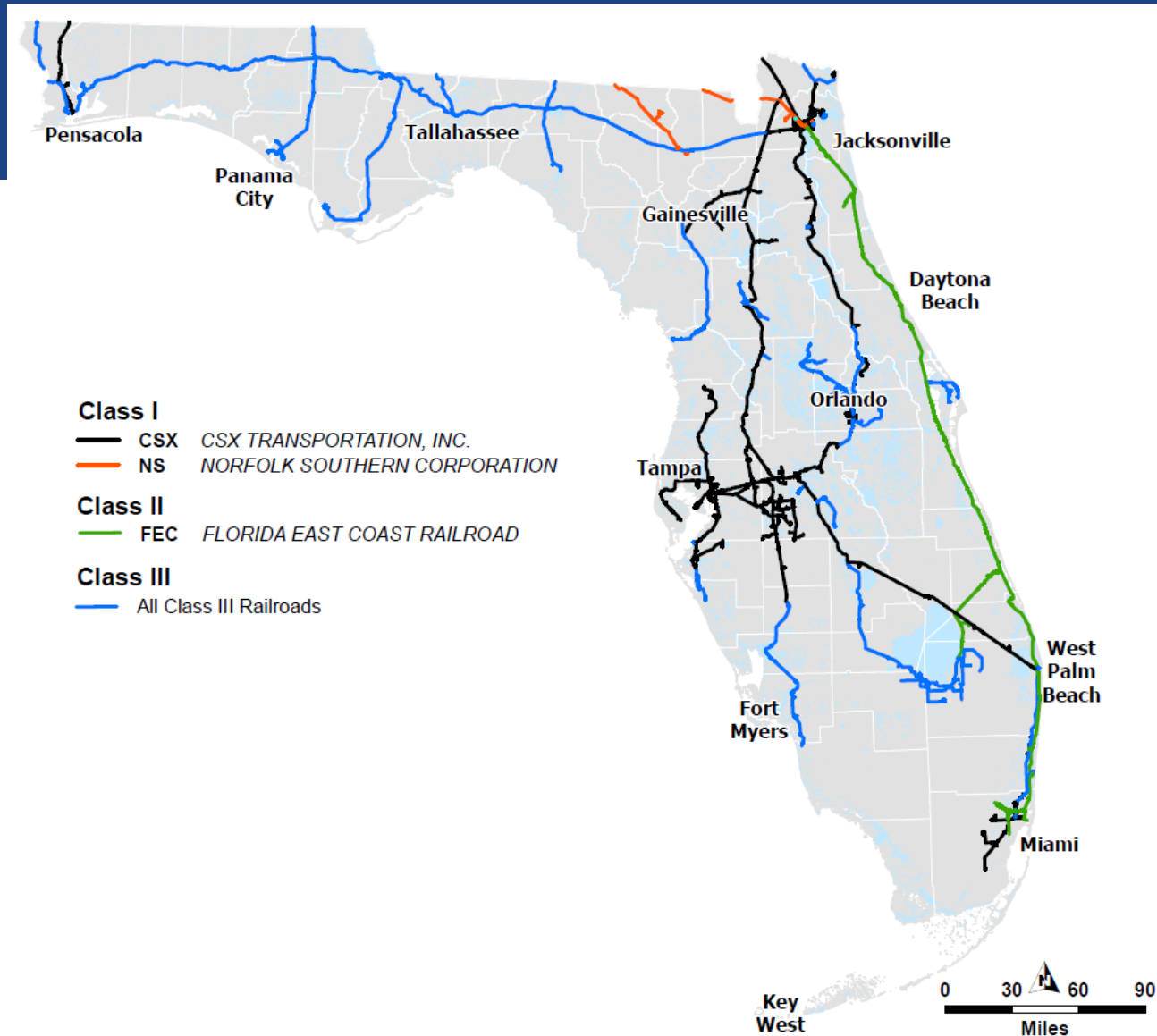
# FREIGHT RAIL

Class I

Class II

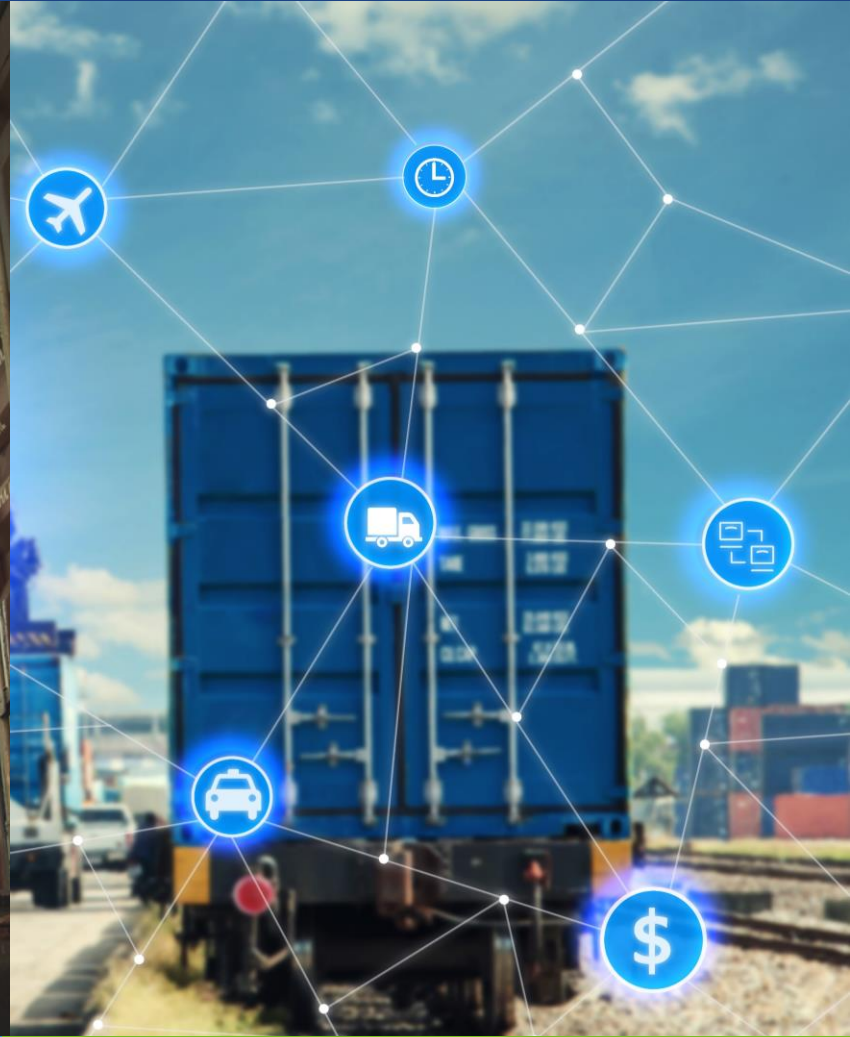
Class III

Partners



78 Million tons (2019)

# INDUSTRY TRENDS



Partnership with Passenger Rail

Industry Consolidation

Technology / Decarbonization

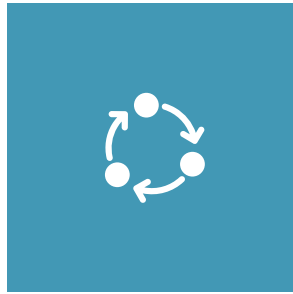
# POTENTIAL FREIGHT RAIL STRATEGIES



Safety



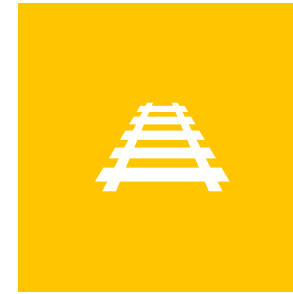
Liability



Capacity



Funding



New Rail  
Access



Economic  
Development



An aerial photograph of a vast freight rail yard. The yard is filled with hundreds of freight cars of various colors, including green, blue, orange, and white, arranged in long, parallel rows across multiple tracks. The perspective is from a high angle, looking down on the tracks as they recede into the distance. The lighting suggests late afternoon or early morning, with long shadows and a warm glow. In the background, there are some utility poles and a few buildings, indicating an industrial or urban setting.

# **RAIL & TRANSIT STATION ACTIVITIES**



# National Electric Vehicle Infrastructure (NEVI) Formula Program

A close-up photograph of a person's hand, likely an older individual, interacting with a control panel in a vehicle's cab. The hand is positioned over a series of buttons and a joystick-like control. In the background, a steering wheel and a navigation screen are visible. The scene is set inside a vehicle, with a blurred view of a street and buildings outside the window. A semi-transparent dark grey banner is overlaid across the middle of the image, containing the title text.

# **ROLES & RESPONSIBILITIES EXERCISE**

# EXISTING ROLES AND RESPONSIBILITIES

## Passenger Rail

	Role	Responsibilities			
		Planning/Visioning	System Implementation	Funding/Financing	Operations/Maintenance
Intercity	FDOT	●			
	Amtrak / Brightline	●	●	●	●
	Local Government	●			
	MPO/RPC	●			
Regional	FDOT	●	●	●	●
	SunRail/SFRTA	●	●	●	●
	Local Government	●		●	
	MPO/RPC	●		●	
Urban	FDOT	●		●	
	Local Government	●	●	●	●
	MPO/RPC	●			



# EXISTING ROLES AND RESPONSIBILITIES

## *Freight Rail*

Role	Responsibilities			
	<i>Planning/Visioning</i>	<i>System Implementation</i>	<i>Funding/Financing</i>	<i>Operations/Maintenance</i>
<b>FDOT</b>	●	●	●	
<b>Railroads</b>	●	●	●	●
<b>Local Government</b>	●	●	●	
<b>MPO/RPC</b>	●			

# EXISTING ROLES AND RESPONSIBILITIES

## *Transit*

	Role	Responsibilities			
		<i>Planning/Visioning</i>	<i>System Implementation</i>	<i>Funding/Financing</i>	<i>Operations/Maintenance</i>
Urban/Rural	FDOT	●		●	
	Local Government	●	●	●	●
	MPO/RPC	●		●	
Intercity	FDOT	●		●	
	Providers	●	●	●	●
	Local Government	●			
	MPO/RPC	●			

A photograph of a person's hand resting on the dashboard of a vehicle, likely a truck or bus. The dashboard features a steering wheel, a navigation screen, and various control buttons. A semi-transparent dark grey horizontal band is overlaid across the center of the image, containing the text 'ROLES & RESPONSIBILITIES DISCUSSION' in white, bold, uppercase letters. The background shows a blurred street scene with buildings and trees.

# **ROLES & RESPONSIBILITIES DISCUSSION**

A blurred high-speed train in motion on tracks, with a dark horizontal band across the center containing white text.

# **STATION ACTIVITIES DEBRIEF**

# LISTENING SESSIONS



MAR 29TH	APR 6TH	APR 7TH	APR 12TH	APR 13TH	APR 26TH	TBA
<b>Jacksonville</b> FDOT District Two Headquarters <i>Training Room</i> 1:00- 4:00 PM	<b>Lakeland</b> Magnolia Building 9:00 AM – 12:00 PM	<b>Longwood</b> Longwood Community Building 9:00 AM – 12:00 PM	<b>Ft. Myers</b> Riverside Community Center 9:00 AM – 12:00 PM	<b>Aventura Miami</b> Aventura Branch Library 1:00- 4:00 PM	<b>Marianna</b> Jackson County Agriculture Center 9:00 AM – 12:00 PM	<b>Statewide Closing</b> Virtual <i>GoToWebinar</i> TBA

For more information and to register: [FDOT.gov/rail-transit-listening](https://www.flhwy.com/rail-transit-listening)

# NEXT STEPS



**Send Additional  
Comments to**

*RAIL @dot.state.fl.us*  
*fdot.transit@dot.state.fl.us*



**Continue the  
Conversation**



# CLEARING THE PATH FOR A SAFER JOURNEY.

Dynamic Envelopes are pavement markings used to decrease unsafe stopping behavior for motorists, bicyclists, and pedestrians near railroad crossings. These white markings, coated with reflective glass powder, indicate the clearance needed for trains to safely pass.

**Dynamic Envelopes reduce vehicles stopped on or too close to the tracks by at least 15%.\***

\*According to FDOT Pilot Program



Statewide Traffic and Railroad Initiative Using Dynamic Envelopes



## **Brad Thoburn**

*Assistant Secretary, Strategic Development*

605 Suwannee Street, MS 57

Tallahassee, FL 32399

Phone: 850-414-5211

Email: [Brad.Thoburn@dot.state.fl.us](mailto:Brad.Thoburn@dot.state.fl.us)